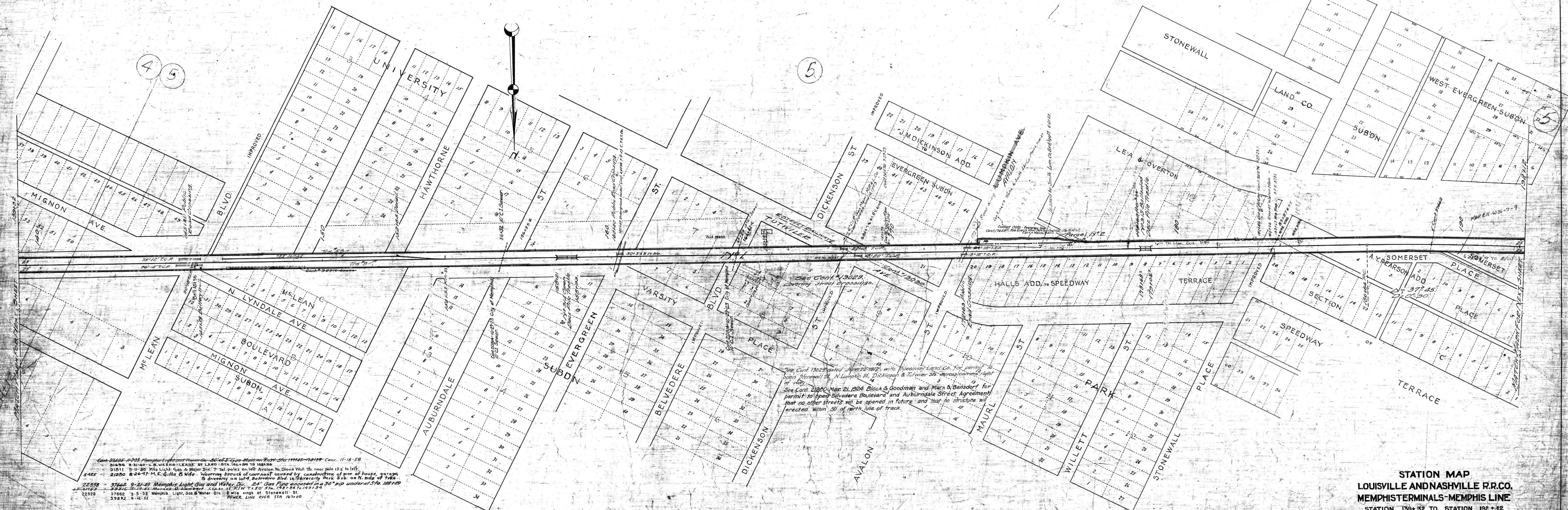


Ass. No.	Date Comp.	Description of Change
5791	1-30-25	Inst. of the top sig. of Stonewall St.
18834	6-30-31	Flashing Lights at McLean, Auburndale, Evergreen, Belvedere, Tutwiler Avenue & Stonewall St.
12737	9-1-31	Improving sign at Belvedere St.
15606	5-26-31	Evergreen St.
16307	7-20-48	Install rail crossing at Tutwiler Ave. Sta. 68+57
51174	1-20-53	Ret. Tr. #54



Cont. 21462 11-23-33 Memphis Terminal Home Co. - 36' x 58' Gas Main on Row - Sta. 1145-1212 - Cont. 11-18-58
 31816 8-31-40 - B.W. WICKS - LEASE OF LAND - STA. 143+00 TO 148+00
 5485 5-11-20 Mfg Light Gas & Water Div. 7' Tall poles on left Avalon to Stone Wall St. near pole 152' to left.
 21200 8-26-47 M.E. Gillis & Wife - Waiving breach of covenant caused by construction of por. of house, garage & driveway on lot 4, Belvedere Blvd. in University Park Sub. on N. side of Trk.
 22558 37662 9-21-40 Memphis Light Gas and Water Div. 24" Gas Pipe encased in 30" dip under Sta. 188+00
 22528 37662 3-5-52 Memphis Light Gas & Water Div. 2 wire rings of Stonewall St.
 35892 5-12-52 POWER LINE OVER STA. 147+00

STATION MAP
LOUISVILLE AND NASHVILLE R.R. CO.
MEMPHIS TERMINALS - MEMPHIS LINE
STATION 139+52 TO STATION 192+12

SCALE 1 INCH = 100 FEET
 JUNE 30 1917

OFFICE OF ENGINEER
 LOUISVILLE, KY.