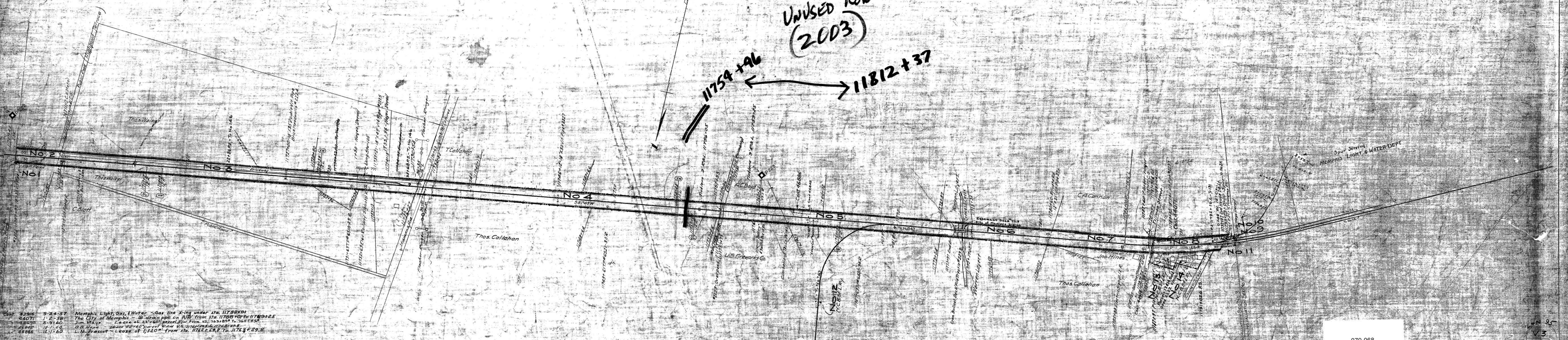


UNUSED ROW  
(2003)

11759+96

11812+37



Cont. 4396 9-24-57 Memphis Light, Gas, & Water - Gas line X-ing under sta. 11788+01  
 4401 1-2-58 The City of Memphis - 18" drain pipe on R/W from sta. 11788+01 to 11789+25  
 4405 2-9-60 Jim May - Lease of 28' x 60' parcel E/W from U.S. 762+80 to 764+50  
 4406 12-1-60 O.B. Hoop - Lease of 28' x 60' parcel E/W from U.S. 764+50 to 766+00  
 4408 12-1-60 L.M. Presson - Lease of 1,320' from sta. 11762+59.2 to 11763+29.8

079-068

3  
88