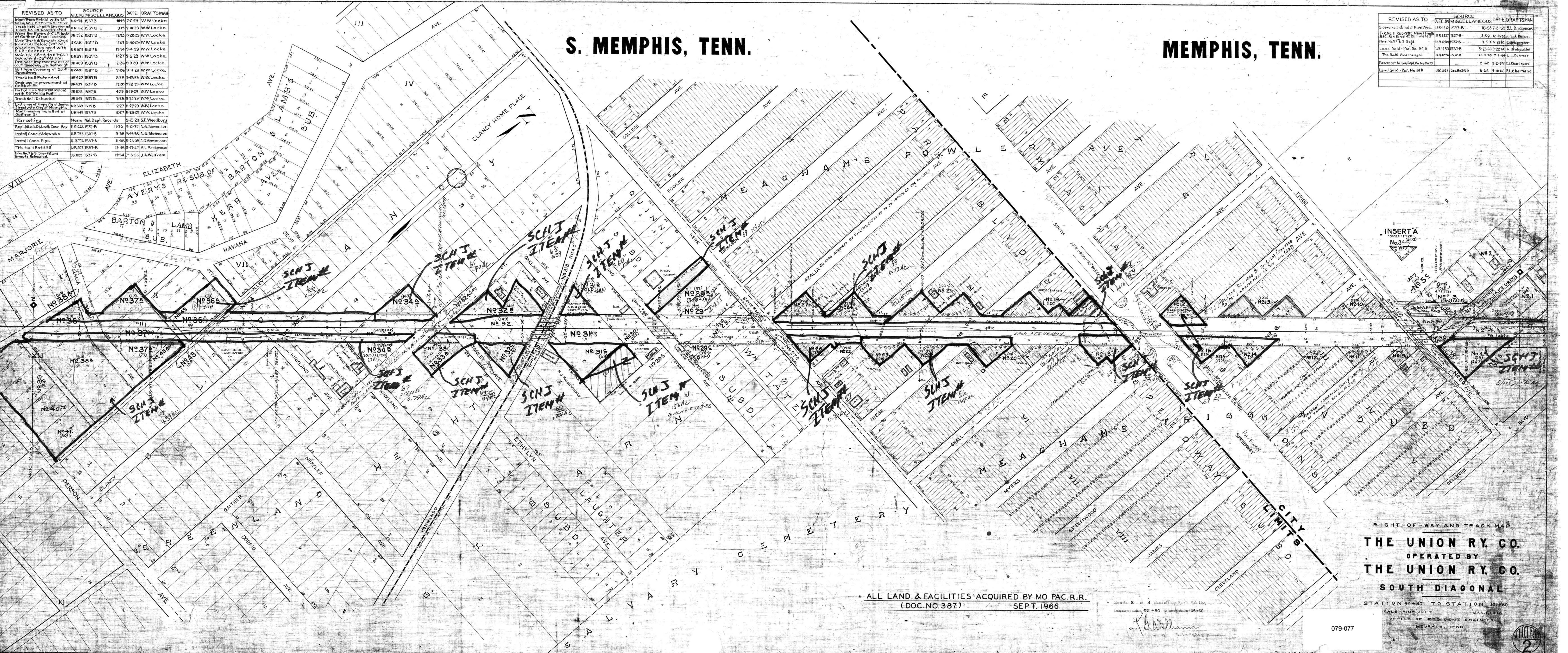


REVISED AS TO	SOURCE	DATE	DRAFTSMAN
Main track Relaid with 75' Right of Way	UR 74	10-19-57	W.W. Locke
Track No. 10A Completed	UR 62	7-10-57	W.W. Locke
Work on Track No. 10A	UR 292	8-28-57	W.W. Locke
Main Track Relaid with 75' Right of Way	UR 310	8-30-57	W.W. Locke
Work on Track No. 10A	UR 324	9-4-57	W.W. Locke
Main Track Relaid with 75' Right of Way	UR 371	9-5-57	W.W. Locke
Drainage Improvements of South Side	UR 409	9-29-57	W.W. Locke
Ball Signs Crossing at South Side	UR 401	9-11-57	W.W. Locke
Track No. 9 Extended	UR 462	9-13-57	W.W. Locke
Drainage Improvement at Gathers St	UR 497	9-18-57	W.W. Locke
Part of this No. 10A Relaid with 75' Right of Way	UR 525	9-19-57	W.W. Locke
Track No. 11 Extended	UR 549	9-23-57	W.W. Locke
Exchange of Property of James Street with City of Memphis	UR 639	11-27-57	W.W. Locke
Ball Signs Installed at Gathers St	UR 643	12-27-57	W.W. Locke
Parcelling	None	Val. Dept. Records	9-15-29 S.E. Woodbury
Rep. B.R. No. 114 with Conc. Box	UR 644	11-36	2-12-57 A.G. Stevenson
Install Conc. Sidewalks	UR 785	3-36	5-19-58 A.G. Stevenson
Install Conc. Pipe	UR 774	11-36	5-15-58 A.G. Stevenson
Trk. No. 11 Ext'd 95'	UR 972	12-46	9-11-47 B.L. Bridgeman
Trk. No. 7 & 8 Short and Points Relaid	UR 138	12-54	7-15-55 J.A. Weifram

REVISED AS TO	SOURCE	DATE	DRAFTSMAN
Sidewalks Installed at Kerr Ave.	UR 1217	10-58	7-2-59 B.L. Bridgeman
Trk. No. 11 Relaid New Form	UR 1217	10-58	7-2-59 B.L. Bridgeman
Trk. No. 11 Relaid New Form	UR 1217	10-58	7-2-59 B.L. Bridgeman
Land Sold - Par. No. 34 B	UR 1250	10-58	7-2-59 B.L. Bridgeman
Trk. No. 10 Rearranged	UR 1274	12-2-63	7-1-64 L.L. Corner
Easement to New Dept. Parcel	UR 1355	2-62	9-2-64 E.L. Chartrand
Land Sold - Par. No. 31 B	UR 1355	Dec. 3-63	3-66 9-10-66 E.L. Chartrand

# S. MEMPHIS, TENN.

# MEMPHIS, TENN.



**INSERT A**  
 304 (10-20)  
 No. 34 (45-2)  
 1/2" = 100'

RIGHT-OF-WAY AND TRACK MAP  
**THE UNION RY. CO.**  
 OPERATED BY  
**THE UNION RY. CO.**  
**SOUTH DIAGONAL**  
 STATION 52+80 TO STATION 105+60  
 SALEM IN 1907. JAN. 1918  
 OFFICE OF RESIDENT ENGINEER  
 MEMPHIS, TENN.

ALL LAND & FACILITIES ACQUIRED BY MO PAC. R.R.  
 (DOC. NO. 387) SEPT. 1966

Scale No. 2 of 4 sheets of Union Ry. Co. Map Line.  
 (Measurements 52+80 to 105+60.)  
*K.B. Williams*  
 Resident Engineer

079-077

