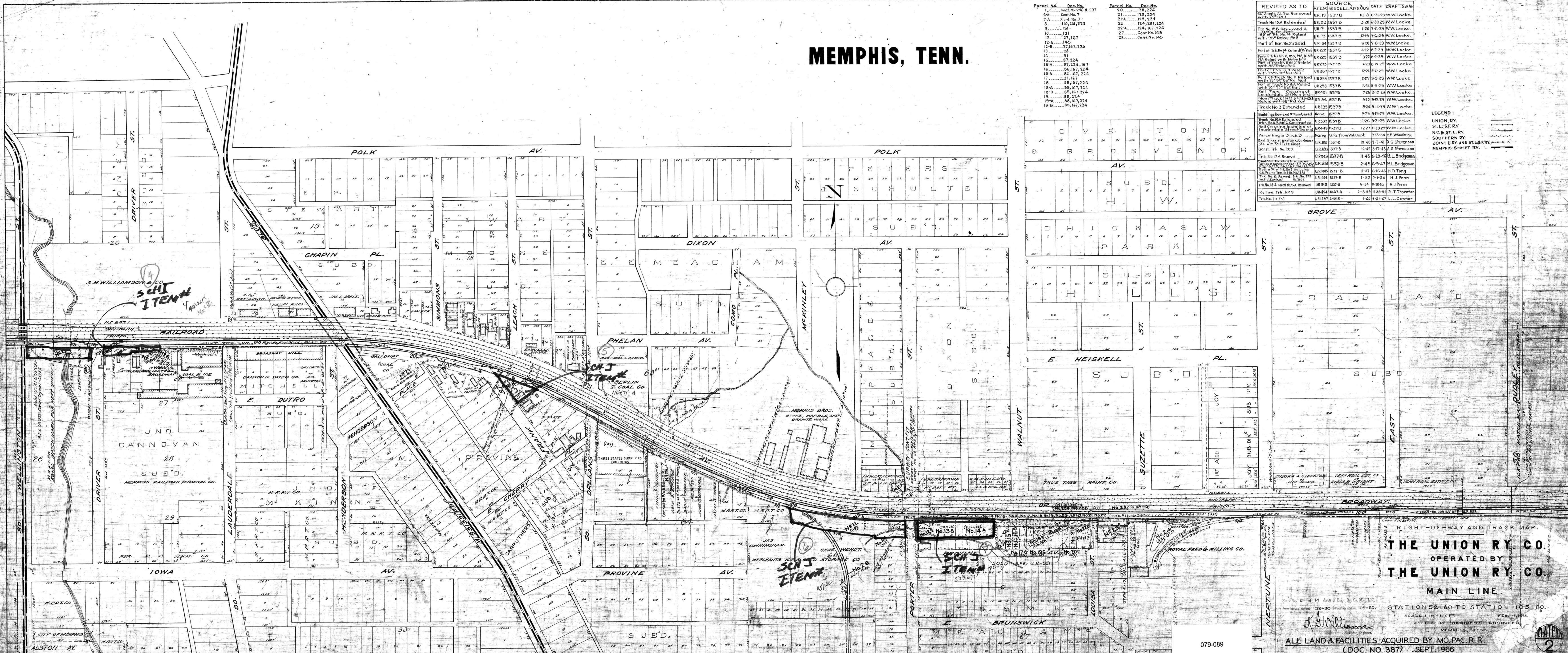


# MEMPHIS, TENN.

Parcel No.	Doc. No.	Parcel No.	Doc. No.
1	129, 224	21	129, 224
2	129, 224	22	129, 224
3	110, 201, 224	23	124, 201, 224
4	131	24	124, 167, 224
5	131	25	124, 167, 224
6	131	26	124, 167, 224
7	131	27	124, 167, 224
8	131	28	124, 167, 224
9	131	29	124, 167, 224
10	131	30	124, 167, 224
11	131	31	124, 167, 224
12	131	32	124, 167, 224
13	131	33	124, 167, 224
14	131	34	124, 167, 224
15	131	35	124, 167, 224
16	131	36	124, 167, 224
17	131	37	124, 167, 224
18	131	38	124, 167, 224
19	131	39	124, 167, 224
20	131	40	124, 167, 224

REVISED AS TO	SOURCE	DATE	DRAFTSMAN
60' Single 21 Sw. Renewed with 75' Rail	UR 19	1537 B	10-16-62 W.W. Locke
Track No. 10A Extended	UR 33	1537 B	3-20-62 W.W. Locke
Trk. No. 15B Removed & replaced with 75' Rail	UR 71	1537 B	1-20-74 W.W. Locke
Part of Trk. No. 15 Replaced with 75' Rail	UR 75	1537 B	1-20-74 W.W. Locke
Part of Trk. No. 23 Solid	UR 84	1537 B	3-20-62 W.W. Locke
Part of Trk. No. 14 Replaced with 75' Rail	UR 228	1537 B	4-22-62 W.W. Locke
Part of Trk. No. 11, 12, 13, 14, 15, 16, 17, 18, 19, 20, 21, 22, 23, 24, 25, 26, 27, 28, 29, 30, 31, 32, 33, 34, 35, 36, 37, 38, 39, 40, 41, 42, 43, 44, 45, 46, 47, 48, 49, 50, 51, 52, 53, 54, 55, 56, 57, 58, 59, 60, 61, 62, 63, 64, 65, 66, 67, 68, 69, 70, 71, 72, 73, 74, 75, 76, 77, 78, 79, 80, 81, 82, 83, 84, 85, 86, 87, 88, 89, 90, 91, 92, 93, 94, 95, 96, 97, 98, 99, 100	UR 228	1537 B	3-27-62 W.W. Locke
Part of Trk. No. 11 Replaced with 75' Rail	UR 275	1537 B	6-23-62 W.W. Locke
Part of Trk. No. 11 Replaced with 75' Rail	UR 307	1537 B	1-26-74 W.W. Locke
Part of Trk. No. 11 Replaced with 75' Rail	UR 330	1537 B	2-27-74 W.W. Locke
Part of Trk. No. 11 Replaced with 75' Rail	UR 338	1537 B	5-24-74 W.W. Locke
Part of Trk. No. 11 Replaced with 75' Rail	UR 401	1537 B	7-26-74 W.W. Locke
Part of Trk. No. 11 Replaced with 75' Rail	UR 46	1537 B	3-22-62 W.W. Locke
Track No. 3 Extended	UR 233	1537 B	8-24-62 W.W. Locke
Buildings Revised & Numbered	None	1537 B	7-23-62 W.W. Locke
Track No. 10A Extended	UR 339	1537 B	1-26-74 W.W. Locke
Part of Trk. No. 11 Replaced with 75' Rail	UR 449	1537 B	1-27-74 W.W. Locke
Parcelling in Block D	None	1537 B	9-13-34 E. Woodbury
Part of Trk. No. 11 Replaced with 75' Rail	UR 831	1537 B	10-40-74 A.G. Stevenson
Part of Trk. No. 11 Replaced with 75' Rail	UR 833	1537 B	11-14-74 A.G. Stevenson
Part of Trk. No. 11 Replaced with 75' Rail	UR 849	1537 B	11-45-74 B.L. Bridgeman
Part of Trk. No. 11 Replaced with 75' Rail	UR 951	1537 B	12-45-74 B.L. Bridgeman
Part of Trk. No. 11 Replaced with 75' Rail	UR 1009	1537 B	11-41-66 H.D. Tong
Part of Trk. No. 11 Replaced with 75' Rail	UR 1074	1537 B	1-5-74 H.J. Penn
Part of Trk. No. 11 Replaced with 75' Rail	UR 1140	1537 B	6-54-74 H.J. Penn
Part of Trk. No. 11 Replaced with 75' Rail	UR 1547	1537 B	2-18-59 R.T. Thornton
Part of Trk. No. 7 & 7-A	UR 1297	124018	1-24-42 L.L. Conner

LEGEND:  
 UNION RY. ————  
 S.T. & S.F. RY. ————  
 N.C. & S.T. RY. ————  
 SOUTHERN RY. ————  
 JOINT U.R. AND S.T. & S.F. RY. ————  
 MEMPHIS STREET RY. ————



RIGHT-OF-WAY AND TRACK MAP.

**THE UNION RY. CO.**  
 OPERATED BY  
**THE UNION RY. CO.**  
 MAIN LINE.

STATION 52+80 TO STATION 105+60.  
 SCALE: 1" = 100 FT.  
 OFFICE OF RESIDENT ENGINEER,  
 MEMPHIS, TENN.

ALL LAND & FACILITIES ACQUIRED BY MO. PAC. R.R.  
 (DOC. NO. 387) - SEPT. 1966

079-089