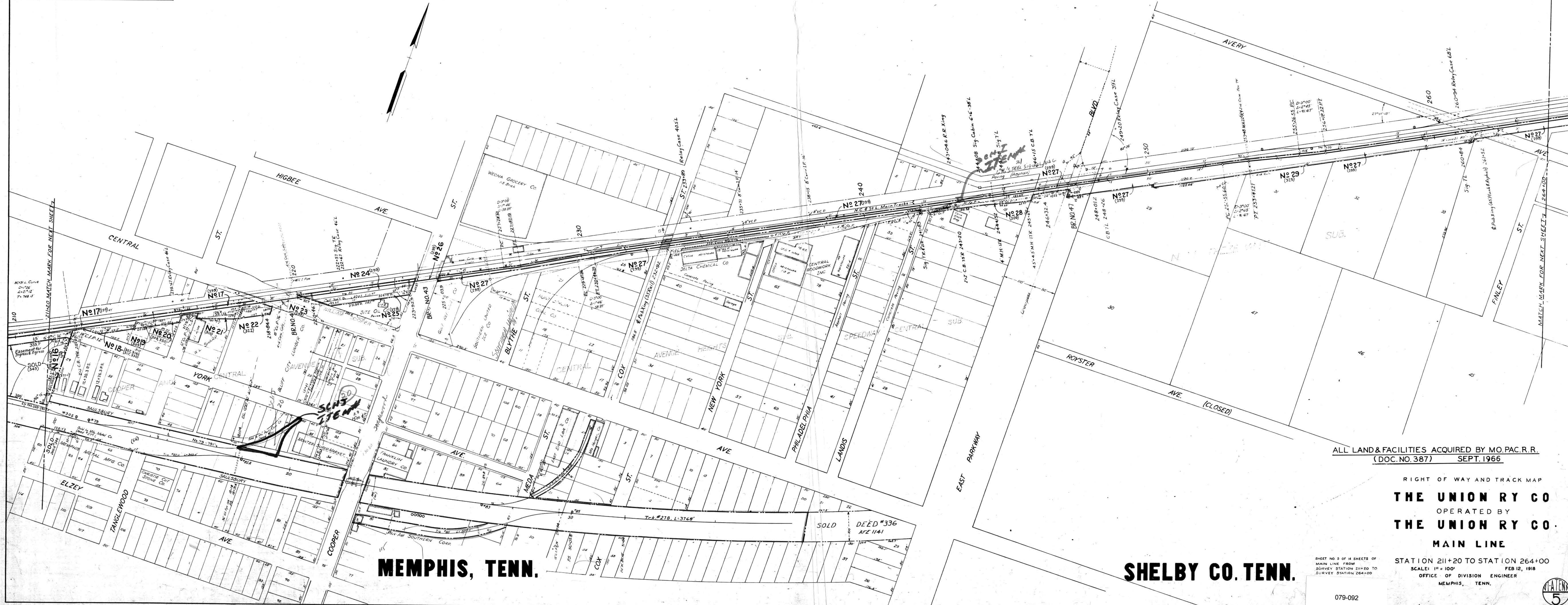
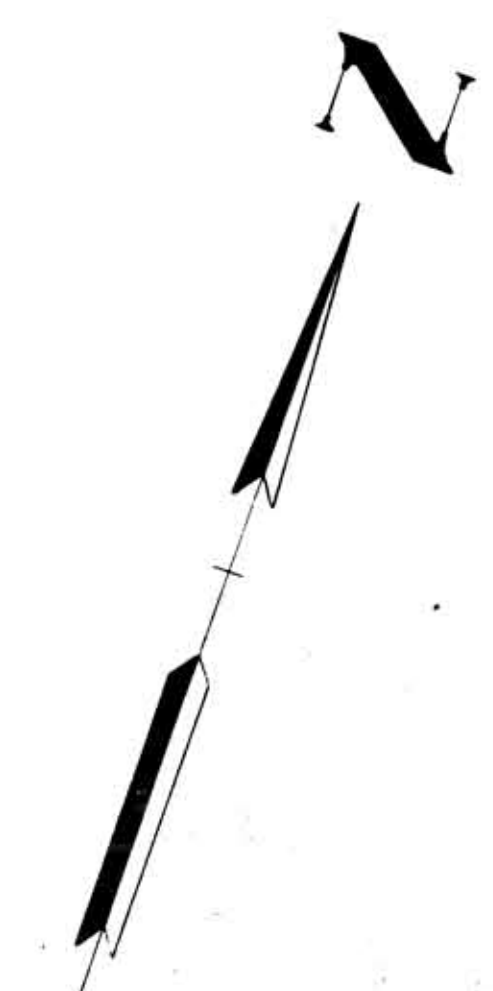


REVISED AS TO	SOURCE	DATE	DRAFTSMAN
Main Line Change Anon to South Bar-Kadein Street	UR.1070	7-19-55	J.A. Wolfgram
Land Acquired Purs. to 1933 Act	UR.1070	5-50	4-25-56 B.L. Bridgeman
Land Sold - Part of Par. 16	UR.1029	5-58	4-28-59 B.L. Bridgeman
Trk. No. 79 Shortened	UR.1028	10-58	6-30-59 B.L. Bridgeman
Land Sold - Part of Par. 16	UR.1278	1937 (Dec. 68)	6-63 9-9-64 E.L. Chartrand



MEMPHIS, TENN.

SHELBY CO. TENN.

ALL LAND & FACILITIES ACQUIRED BY MO. PAC. R.R.
(DOC. NO. 387) SEPT. 1966

RIGHT OF WAY AND TRACK MAP
THE UNION RY CO
OPERATED BY
THE UNION RY CO.
MAIN LINE

STATION 211+20 TO STATION 264+00
SCALE: 1" = 100' FEB 12, 1918
OFFICE OF DIVISION ENGINEER
MEMPHIS, TENN.

SHEET NO. 3 OF 4 SHEETS OF
MAIN LINE FROM
SURVEY STATION 211+20 TO
SURVEY STATION 264+00

