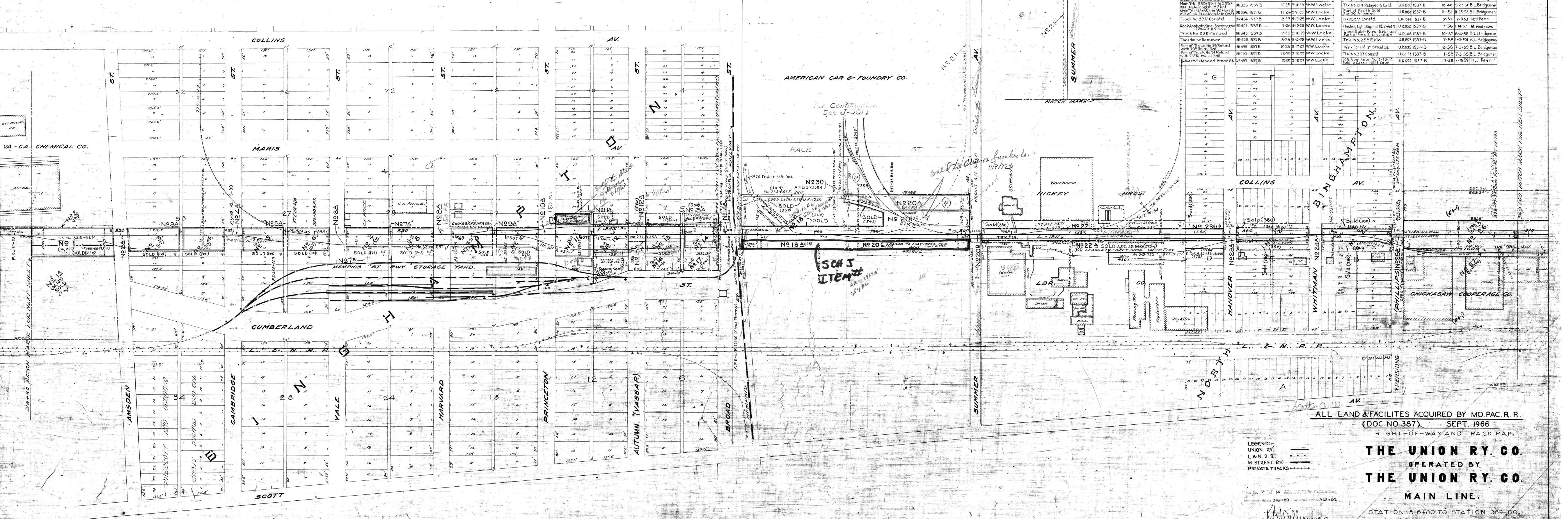


REVISED AS TO	SOURCE	DATE	DRAFTSMAN
Flashing Light Signals Installed at Phillips Ave.	UR1071 1537-B	4-58	B.L. Bridgeman
Land Sold Parts of Parcels 18, 20, 21, 22, 23, 24, 25, 26, 27, 28, 29, 30, 31, 32, 33, 34, 35, 36, 37, 38, 39, 40, 41, 42, 43, 44, 45, 46, 47, 48, 49, 50, 51, 52, 53, 54, 55, 56, 57, 58, 59, 60, 61, 62, 63, 64, 65, 66, 67, 68, 69, 70, 71, 72, 73, 74, 75, 76, 77, 78, 79, 80, 81, 82, 83, 84, 85, 86, 87, 88, 89, 90, 91, 92, 93, 94, 95, 96, 97, 98, 99, 100	UR1260 1537-B	2-61	J. Schomburg
Trk. No. 86 Reinv'd.	UR184 1537-B	3-61	E.L. Chartland
Construct 1051' Track No. 321	UR285 1537-B	5-61	W.C. Jones
Trk. No. 325 Const'd	UR274 1537-B	5-62	L.L. Conner
Land Sold Parts of Parcels 1, 2, 3, 4, 5, 6, 7, 8, 9, 10, 11, 12, 13, 14, 15, 16, 17, 18, 19, 20, 21, 22, 23, 24, 25, 26, 27, 28, 29, 30, 31, 32, 33, 34, 35, 36, 37, 38, 39, 40, 41, 42, 43, 44, 45, 46, 47, 48, 49, 50, 51, 52, 53, 54, 55, 56, 57, 58, 59, 60, 61, 62, 63, 64, 65, 66, 67, 68, 69, 70, 71, 72, 73, 74, 75, 76, 77, 78, 79, 80, 81, 82, 83, 84, 85, 86, 87, 88, 89, 90, 91, 92, 93, 94, 95, 96, 97, 98, 99, 100	UR1273 1537-B (Dec 34)	2-62	E.L. Chartland
Land Sold Parts of Parcels 1, 2, 3, 4, 5, 6, 7, 8, 9, 10, 11, 12, 13, 14, 15, 16, 17, 18, 19, 20, 21, 22, 23, 24, 25, 26, 27, 28, 29, 30, 31, 32, 33, 34, 35, 36, 37, 38, 39, 40, 41, 42, 43, 44, 45, 46, 47, 48, 49, 50, 51, 52, 53, 54, 55, 56, 57, 58, 59, 60, 61, 62, 63, 64, 65, 66, 67, 68, 69, 70, 71, 72, 73, 74, 75, 76, 77, 78, 79, 80, 81, 82, 83, 84, 85, 86, 87, 88, 89, 90, 91, 92, 93, 94, 95, 96, 97, 98, 99, 100	UR1265 1537-B	2-61	E.L. Chartland
Trk. No. 335 Const'd.	UR1282 1537-B	4-63	L.L. Conner
Land Sold Parts of Parcels 1, 2, 3, 4, 5, 6, 7, 8, 9, 10, 11, 12, 13, 14, 15, 16, 17, 18, 19, 20, 21, 22, 23, 24, 25, 26, 27, 28, 29, 30, 31, 32, 33, 34, 35, 36, 37, 38, 39, 40, 41, 42, 43, 44, 45, 46, 47, 48, 49, 50, 51, 52, 53, 54, 55, 56, 57, 58, 59, 60, 61, 62, 63, 64, 65, 66, 67, 68, 69, 70, 71, 72, 73, 74, 75, 76, 77, 78, 79, 80, 81, 82, 83, 84, 85, 86, 87, 88, 89, 90, 91, 92, 93, 94, 95, 96, 97, 98, 99, 100	Dec 350	5-65	G.A.B.

REVISED AS TO	SOURCE	DATE	DRAFTSMAN
Track No. 277 Long Const'd	UR21 1537-B	11-10	W.W. Locke
Track No. 31A Extended	UR28 1537-B	12-19	W.W. Locke
Trk. No. 31A Replaced & Truss & Chatham Const'd	UR134 1537-B	1-21	W.W. Locke
Tool House Constructed	UR135 1537-B	10-20	W.W. Locke
V.P. Pipe Replaced & Gate Installed	UR200 1537-B	12-21	W.W. Locke
Track No. 88 Shortened	UR220 1537-B	2-22	W.W. Locke
Track No. 31E Const'd	UR271 1537-B	5-25	W.W. Locke
Track No. 89 Const'd	UR274 1537-B	6-25	W.W. Locke
Culvert Changes Phillips Ave. Under Trk. No. 31	UR292 1537-B	12-23	W.W. Locke
Water Columns Installed	UR307 1537-B	11-24	W.W. Locke
Main Trk. 305-318 to 345-365 Replaced with No. 305 to 325-345	UR312 1537-B	10-29	W.W. Locke
Main Trk. 345-375 to 325-345 Replaced with No. 345-375	UR325 1537-B	10-25	W.W. Locke
Main Trk. 375-415 to 325-375 Replaced with No. 375-415	UR336 1537-B	11-24	W.W. Locke
Track No. 28A Const'd	UR424 1537-B	8-27	W.W. Locke
Track App'ly Xing Summer Ave. Under Trk. No. 31	UR401 1537-B	7-26	W.W. Locke
Track No. 89 Extended	UR343 1537-B	7-25	W.W. Locke
Tool House Removed	UR468 1537-B	3-28	W.W. Locke
Part of Trk. No. 35 Reloc'd with No. 35 Const'd	UR479 1537-B	10-29	W.W. Locke
Part of Trk. No. 31 Reloc'd with No. 31 Const'd	UR432 1537-B	12-29	W.W. Locke
Culverts Extended - Broad St.	UR497 1537-B	12-28	W.W. Locke

REVISED AS TO	SOURCE	DATE	DRAFTSMAN	
Buildings Revised & Numbered	None	Val. Dept. Survey	7-23	W.W. Locke
Track No. 32 Shortened etc.	UR111 1537-B	6-23	W.W. Locke	
Rail Crossing Installed at Phillips St.	UR449 1537-B	12-27	W.W. Locke	
Parcel Nos. 1222-2382	None	Val. Dept. Records	9-13-34	E. Woodbury
Track No. 90 Removed	UR105 1537-B	4-36	A.G. Stevenson	
Const. Summer Ave. Viaduct	UR107 1537-B	4-32	A.G. Stevenson	
Trk. No. 21A Const'd	UR106 1537-B	8-43	B.L. Bridgeman	
Land Sold - Parcels 18, 19, 20, 21, 22, 23, 24, 25, 26, 27, 28, 29, 30, 31, 32, 33, 34, 35, 36, 37, 38, 39, 40, 41, 42, 43, 44, 45, 46, 47, 48, 49, 50, 51, 52, 53, 54, 55, 56, 57, 58, 59, 60, 61, 62, 63, 64, 65, 66, 67, 68, 69, 70, 71, 72, 73, 74, 75, 76, 77, 78, 79, 80, 81, 82, 83, 84, 85, 86, 87, 88, 89, 90, 91, 92, 93, 94, 95, 96, 97, 98, 99, 100	UR106 1537-B	8-46	B.L. Bridgeman	
Water Col. (Bldg No. 7) Rm'd	UR104 1537-B	1-48	H.D. Tong	
Install 36" Conc. P-12'	UR993 1537-B	9-48	H.D. Tong	
St. by Xing at Broad St. Rem'd	UR103 1537-B	7-47	B.L. Bridgeman	
Trk. No. 314 Reloc'd & Ex'd.	UR109 1537-B	12-48	B.L. Bridgeman	
Part of Par. 18 Sold	UR104 1537-B	11-51	B.L. Bridgeman	
Par. 30 Acquired	UR104 1537-B	7-52	H.J. Penn	
Trk. No. 277 Const'd	UR106 1537-B	7-52	H.J. Penn	
Flashing Light Sign Install Broad St.	UR102 1537-B	7-56	M. Andrews	
Land Sold - Parcels 15, 16, 17, 18, 19, 20, 21, 22, 23, 24, 25, 26, 27, 28, 29, 30, 31, 32, 33, 34, 35, 36, 37, 38, 39, 40, 41, 42, 43, 44, 45, 46, 47, 48, 49, 50, 51, 52, 53, 54, 55, 56, 57, 58, 59, 60, 61, 62, 63, 64, 65, 66, 67, 68, 69, 70, 71, 72, 73, 74, 75, 76, 77, 78, 79, 80, 81, 82, 83, 84, 85, 86, 87, 88, 89, 90, 91, 92, 93, 94, 95, 96, 97, 98, 99, 100	UR105 1537-B	10-57	B.L. Bridgeman	
Part of Par. 15, 16, 17, 18, 19, 20, 21, 22, 23, 24, 25, 26, 27, 28, 29, 30, 31, 32, 33, 34, 35, 36, 37, 38, 39, 40, 41, 42, 43, 44, 45, 46, 47, 48, 49, 50, 51, 52, 53, 54, 55, 56, 57, 58, 59, 60, 61, 62, 63, 64, 65, 66, 67, 68, 69, 70, 71, 72, 73, 74, 75, 76, 77, 78, 79, 80, 81, 82, 83, 84, 85, 86, 87, 88, 89, 90, 91, 92, 93, 94, 95, 96, 97, 98, 99, 100	UR105 1537-B	10-57	B.L. Bridgeman	
Trk. No. 258 Ex'd.	UR103 1537-B	7-58	B.L. Bridgeman	
Walk Const'd at Broad St.	UR105 1537-B	12-58	B.L. Bridgeman	
Trk. No. 307 Const'd	UR103 1537-B	1-59	B.L. Bridgeman	
Sold From Parcel No. 18 - 13-14 Sold to Car. 1145-1588	UR124 1537-B	12-58	H.J. Penn	



SHELBY CO. TENN.

ALL LAND & FACILITIES ACQUIRED BY MO. PAC. R. R. (DOC. NO. 387) SEPT. 1966
RIGHT-OF-WAY AND TRACK MAP.

LEGEND:
UNION RY.
L.&N.R.R.
M. STREET RY.
PRIVATE TRACKS

THE UNION RY. CO.
OPERATED BY
THE UNION RY. CO.
MAIN LINE.

STATION 316+80 TO STATION 360+50.
SCALE: 1"=100 FT.
OFFICE OF RESIDENT ENGINEER
MEMPHIS, TENN.

H. Williams
Resident Engineer

