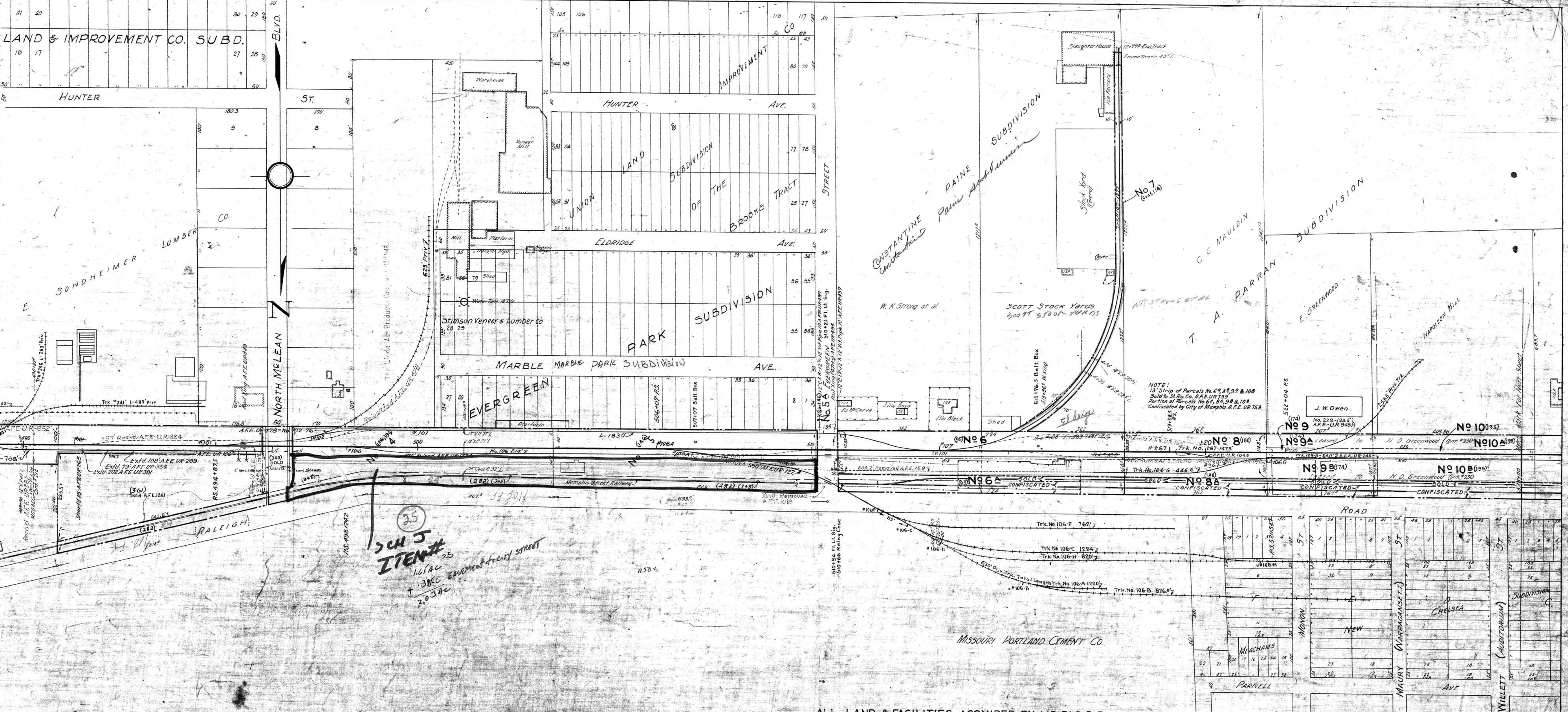


REVISED AS TO	SOURCE	DATE	DRAFTSMAN
Trk. No. 100A Constructed	UR106 1537-B	6-20	W.W. Locke
Trk. No. 100B Constructed	UR122 1537-B	12-20	W.W. Locke
Trk. No. 100C Shortened	UR140 1537-B	9-20	W.W. Locke
Trk. No. 100D Removed	UR153 1537-B	10-21	W.W. Locke
Trk. No. 100E Constructed	UR224 1537-B	5-22	W.W. Locke
Cast Iron Pipes Installed at Elkhorn	UR234 1537-B	8-23	W.W. Locke
Trk. No. 99 Shortened	UR235 1537-B	5-22	W.W. Locke
Trk. No. 106G Extended	UR237 1537-B	8-22	W.W. Locke
Trk. No. 109 Removed, No. 105A Const'd	UR240 1537-B	11-22	W.W. Locke
C.I.P. Installed (Under Trk. 99)	UR256 1537-B	11-22	W.W. Locke
Trk. No. 101 Shortened	UR265 1537-B	2-22	W.W. Locke
Trk. No. 39A Const'd	UR266 1537-B	4-23	W.W. Locke
Trk. No. 39B Constructed	UR272 1537-B	8-17	W.W. Locke
Trk. No. 100A Extended	UR289 1537-B	10-23	W.W. Locke
Culvert Changes May St.	UR292 1537-B	12-23	W.W. Locke
Part of Trk. No. 100 Relaid with 75' Rolling Ball	UR326 1537-B	12-25	W.W. Locke
Trk. No. 100A Extended	UR354 1537-B	11-25	W.W. Locke
Trk. No. 100B Relaid with 75' Rolling Ball	UR360 1537-B	12-25	W.W. Locke
Trk. No. 100C Relaid with 75' Rolling Ball	UR379 1537-B	12-27	W.W. Locke
Trk. No. 100D Shortened	UR301 1537-B	8-26	W.W. Locke
Trk. No. 100 Extended	UR433 1537-B	11-27	W.W. Locke
Trk. No. 100 Relocated	UR478 1537-B	10-28	W.W. Locke
Trk. No. 102 Shortened	UR482 1537-B	11-28	W.W. Locke
Part of Trk. No. 101 Relaid with 75' Rolling Ball	UR494 1537-B	12-28	W.W. Locke
Culverts Installed "W" 101	UR497 1537-B	12-28	W.W. Locke
Part of Trk. No. 101 Relaid with 75' Rolling Ball	UR498 1537-B	12-28	W.W. Locke
Rel. W.B. with C.I.P. 402-24	UR453 1537-B	12-27	W.W. Locke
Rel. W.B. with C.I.P. 402-24	UR449 1537-B	12-27	W.W. Locke
None	Val Dept. Records	3-4-34	E.E. Woodbury
None	Val Dept. Records	1-37	J.A. Wolfgram
12" C.I.P. Installed	UR 615 1537-B	12-41	B.L. Bridgeman
Trk. No. 101 Shortened	UR 684 1537-B	7-42	B.L. Bridgeman
Trk. No. 100 Lined over & Extd.	UR 902 1537-B	7-41	A.G. Stevenson

REVISED AS TO	SOURCE	DATE	DRAFTSMAN
Priv. Part of Trk. 228 Const'd	UR 948 1537-B	12-45	B.L. Bridgeman
Trk. No. 229 Const'd	UR 945 1537-B	1-46	B.L. Bridgeman
Trk. No. 98A Removed	UR 643 1537-B	8-38	B.L. Bridgeman
Trk. No. 239 & 369 Priv. Trk. Const'd	UR 973 1537-B	3-47	B.L. Bridgeman
Trk. No. 99A Removed	UR 652 1537-B	8-34	B.L. Bridgeman
Trk. No. 241 Const'd	UR 985 1537-B	3-47	B.L. Bridgeman
S. Railway Xing Removed	1012	7-47	L.F. Fabry
Trk. No. 267 Const'd	UR 1045 1537-B	8-50	B.L. Bridgeman
Trk. No. 285 Const'd, Trk. No. 337 Relocated	UR 1151 1537-B	5-55	H.J. Penn
Flt. Sig. installed - Evergreen	UR 1153 1537-B	11-55	M. Andrews
Flt. Sig. Relocated - North Melean Blvd.	UR 1167 1537-B	10-56	H.J. Penn
Trk. No. 306 Const'd	UR 1207 1537-B	10-58	B.L. Bridgeman
Part of Para. No. 4 Sold	UR 1173 1537-B	2-57	G. Bridgewater
Part of Para. No. 4 Sold	UR 1264 1537-B	1-61	V.J. Strumph
Trk. 100-A, Reloc. & Extd.	UR 1249 1537-B	4-60	J. Schomburg
Trk. No. 334 Inst'd.	UR 1277 1537-B	10-62	L.L. Conner



SCH 5  
ITEM#  
165AC  
+ 380C  
2.0382

ALL LAND & FACILITIES ACQUIRED BY MO. PAC. R.R.  
(DOC. NO. 387) SEPT. 1966

RIGHT-OF-WAY AND TRACK MAP.  
**THE UNION RY. CO.**  
OPERATED BY  
**THE UNION RY. CO.**  
MAIN LINE.  
STATION 475+20 TO STATION 528+00.

**SHELBY CO. TENN.**

079-098

