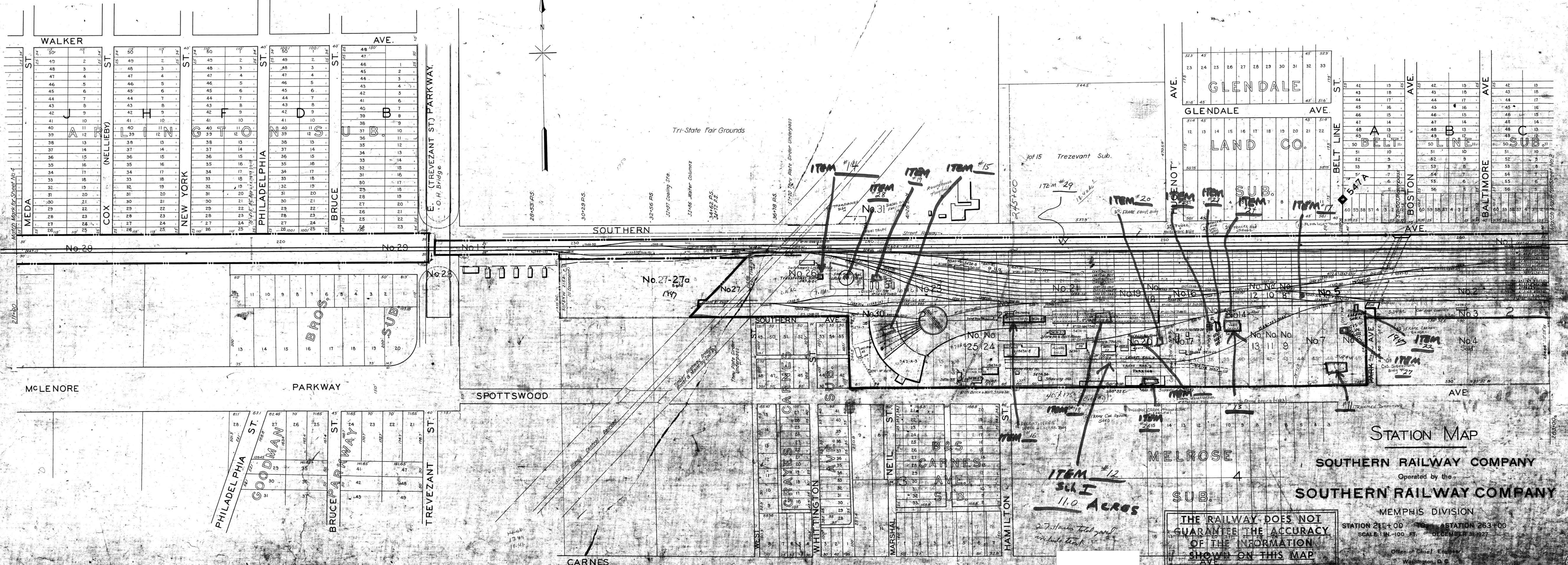


MEMPHIS, TENN.



THE RAILWAY DOES NOT
 GUARANTEE THE ACCURACY
 OF THE INFORMATION
 SHOWN ON THIS MAP

STATION MAP
 SOUTHERN RAILWAY COMPANY
 Operated by the
 SOUTHERN RAILWAY COMPANY
 MEMPHIS DIVISION
 STATION 211+00 TO STATION 263+00
 SCALE: 1 IN. = 100 FT. DECEMBER 31, 1927

Office of Chief Engineer
 Washington, D. C.