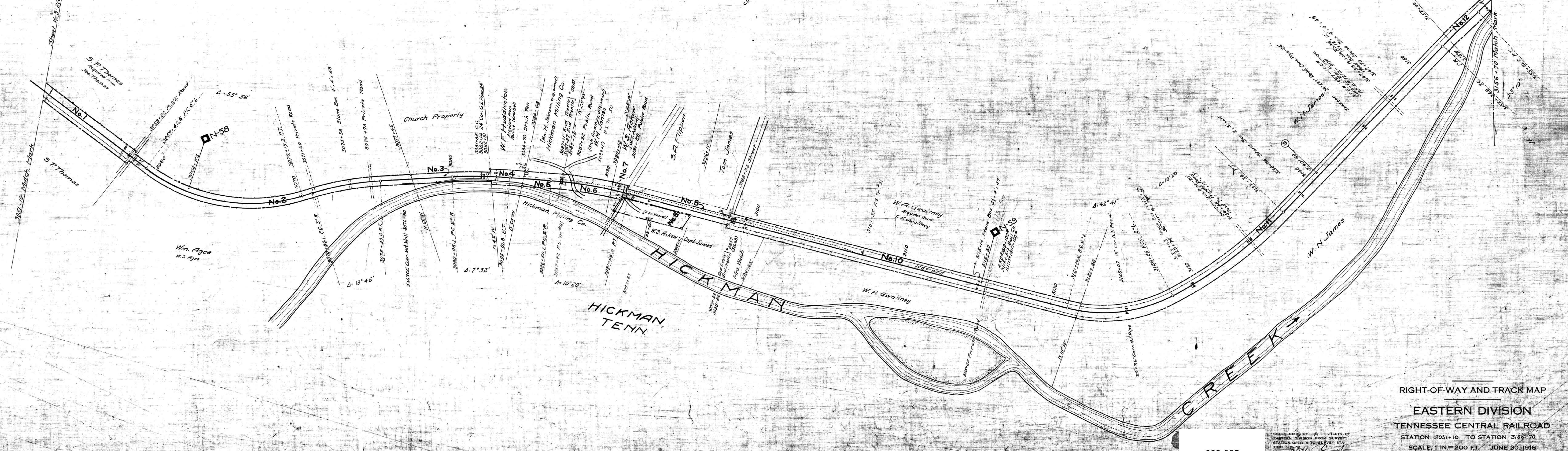


A.F.E.No.	DATE	DESCRIPTION
540	6-5-20	Install electric lights in Depot at Hickman.
623	12-30-21	Replace stone retaining wall 2'x10'x60' with concrete retaining wall 3'x6'x66', sta. 3076+80.
701	1-31-22	Retire all roadway property by sale to T.C. Ry. Co.
53	2-1-22	Addition of all roadway property by purchase from T.C. R.R. Co.
22	6-22-23	Install 872 add. 7"x8 1/2" tie plates to Main Track - Mile 60.
1424	12-31-23	Retire R/W Fence, N. side, sta. 3051+10 to 3062+53.
321	3-7-24	Apply fourth chords to Br. #58.47.
345	11-20-24	Retire 1020-5 1/2"x8" tie plates from Main Track - Mile 60.
1020	12-31-24	Apply 113 cu. yd. slag ballast and convert 113 cu. yd. cinder ballast to embankment - Mile 59.
		Apply 102 cu. yd. slag ballast and convert 102 cu. yd. cinder ballast to embankment - Mile 60.
		Retire cross ties from Main Track, Mile 59 = 124. Mile 60 = 179.
1366	12-31-25	Apply 200 cu. yd. slag ballast and convert 102 cu. yd. cinder ballast to embankment - Mile 60.
339	2-10-26	Apply add. 7"x9" tie plates, Mile 59 = 330. Mile 60 = 645. Trk. #51 = 430. Trk. #52 = 168.
562	10-20-26	Apply add. 7"x9" tie plates, Mile 59 = 2488. Mile 60 = 1190.
1020	12-31-26	Apply 842 cu. yd. Stone ballast and convert 339 cu. yd. Cinder and 443 cu. yd. Gravel ballast to embankment - Mile 60.
1429	12-31-26	Retire and replace R/W Fence, N. side, sta. 3098+70 to 3100+00.
1020	12-31-27	Apply 140 cu. yd. Stone ballast and convert 24 cu. yd. Cinder ballast to embankment - Mile 59.
		Apply 17 cu. yd. Stone ballast and convert 17 cu. yd. Gravel ballast to embankment - Mile 60.
634	7-24-28	Apply add. 7"x9" tie plates, Mile 59 = 240. Mile 60 = 140.
867	9-13-28	Install 36" Cor. G.I. Pipe culvert 20' long, & sta. 3129+74.
889	9-20-28	Replace 18" Cor. Iron Pipe 14' long with 36" Cor. G.I. Pipe 20' long, & sta. 3125+07.
968	12-31-28	Place treated cross ties in Main Track, Mile 59 = 292. Mile 60 = 538.
1020	12-31-28	Apply 325 cu. yd. Stone ballast and convert 16 cu. yd. Cinder ballast to embankment - Mile 59.
908	1-10-29	Install 24" 12" Massey reinf. concrete pipe culvert 24' long, & sta. 3145+00.
909	Feb. 1929	Replace 12"x10" wood box culvert 12' long with 24" Cor. Iron Pipe 20' long, & sta. 3134+48.
933	2-10-29	Apply 35 add. 7"x9" tie plates to Main Track - Mile 60.
808	5-10-29	Apply add. 7"x9" tie plates, Mile 59 = 360. Mile 60 = 802. Retire 688-5 1/2"x8" tie plates - Mile 59.
1000	6-10-29	Retire 514' Hickman Mill Spur Track #50.
1101	12-6-29	Lay 70# rail in Passing Trk. #51, opp. sta. 3088+41 to opp. sta. 3106+36.
1170	12-12-29	Replace 2 sets unt. switch ties with treated switch ties in Trk. #51.
992	12-31-29	Apply 193 cu. yd. add. ballast - Mile 59.
1576	Dec. 1930	Retire and replace R/W Fence, N. side, sta. 3121+86 to sta. 3141+66.

A.F.E.No.	DATE	DESCRIPTION
1474	12-31-31	Replace untreated cross ties with treated cross ties in Main Track, Mile 60 = 347.
1331	1931	Construct R/W Fence, S. side, sta. 3121+86 to 3124+86. Retire R/W Fence, S. side, sta. 3121+86 to 3156+70.
1300	6-24-32	Apply 694 add. 7"x9" tie plates to Main Track - Mile 60.
1445	8-25-32	Construct R/W Fence, N. & S. sides, sta. 3051+10 to 3058+12. Retire R/W Fence, S. side, sta. 3051+10 to 3053+07.
1467	12-31-33	Construct R/W Fence, N. side, sta. 3058+57 to sta. 3065+17.
1449	2-28-34	Apply 52 add. 7"x10" tie plates to Main Track - Mile 60.
1212	Feb. 1935	Lay 90# rail, Main Track - sta. 3146+20 to 3156+70.
1819	10-12-36	Lay 100# relay rail in M.T. Sta. 3051+10 to Sta. 3116+54, 505' of Tr. #52 & retire 1925' Trk. #51. Shorten Tr. #52 - 17 feet.
1736	12- -36	Place 169 C.Y. Stone ballast in M.T. Mile 59.
1838	12- -36	Place 100# rail anchors, Miles 58, 59 & 60.
1737	12-31-36	Place tie plates in M.T. Miles 58, 59 & 60.
1870 F	12-31-37	Place 101 C.Y. Stone ballast in M.T. Mile 59.



080-005

RIGHT-OF-WAY AND TRACK MAP  
 EASTERN DIVISION  
 TENNESSEE CENTRAL RAILROAD  
 STATION 3051+10 TO STATION 3156+70  
 SCALE 1 IN = 200 FT. JUNE 30, 1918  
 VALUATION DEPARTMENT  
 NASHVILLE, TENN.

SMITH COUNTY, TENN.

15 A  
 23