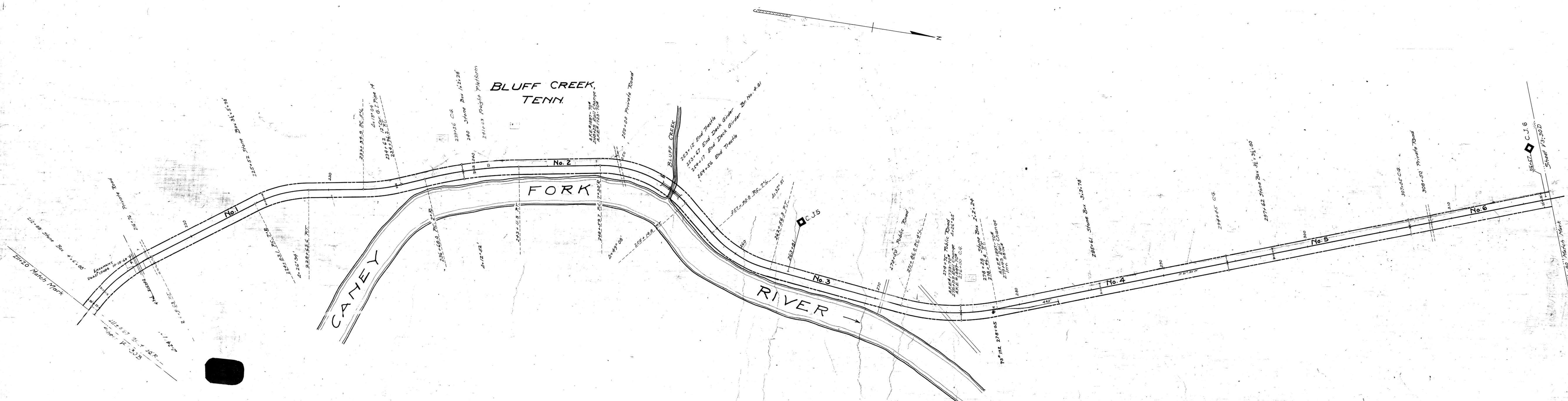


PROPERTY CHANGES SINCE JUNE 30, 1918.

AFE NO.	DATE	DESCRIPTION
504	4-19-20	Retire pit cattle guards at Stas. 239+26, 276+00 & 294+45.
242	12-31-23	Place tie plates in MT. Mile E-5.
1466	2-5	Place additional cross ties in MT. Miles E-5 & E-6.
399	2-10-26	Place tie plates in MT. Mile E-5.
847	11-15-28	Replace Bridge E-4.81
683	2-10-29	Place tie plates in MT. Mile E-6.
1002	4-23-30	Place tie plates in MT. Mile E-6.
1519	9-1-33	Retire Passenger Shelter at Bluff Creek.
1723	2-1-36	Lay 10# relay rail in MT. Sta. 248+25 to Sta. 275+59.
1897	3-1-37	Lay 10# relay rail in MT. Sta. 211+20 to Sta. 248+25 & Sta. 275+59 to Sta. 279+43.



SMITH COUNTY, TENN.

080-009

RIGHT-OF-WAY AND TRACK MAP
CARTILAGE BRANCH
 TENNESSEE CENTRAL RAILROAD
 STATION 211+20 TO STATION 316+80
 SCALE 1 IN = 200 FT. JUNE 30, 1918

SHEET NO. 300P OF 37 SHEETS OF
 CARTILAGE BRANCH FROM SURVEY
 STATION 211+20 TO SURVEY STA-
 TION 316+80
 VALUATION DEPARTMENT
 NASHVILLE, TENN.

