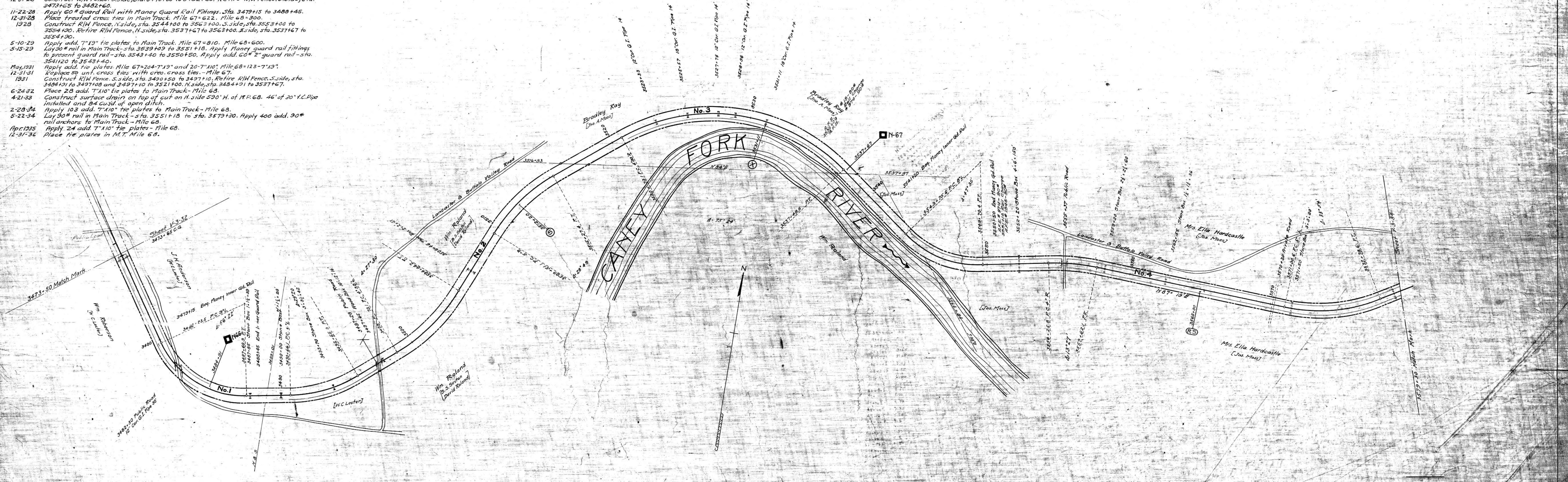


A.F.No.	DATE	PROPERTY CHANGES SINCE JUNE 30, 1918.	DESCRIPTION
369	4-25-19	Apply 395 add. 7" x 1 1/2" tie plates to Main Track - Mile 67.	
371	4-30-19	Replace 60" angle bars with 60" x 24" Cont. Joints. Mile 67-351. Mile 68-352.	
604	4-22-20	Apply 635 add. tie plates to Main Track - Mile 67.	
701	1-31-22	Retire all roadway property by sale to T.C. Ry. Co.	
58	2-1-22	Addition of all roadway property by purchase from T.C. Ry. Co.	
22	6-22-23	Apply add. 7" x 1 1/2" tie plates to Main Track. Mile 67-3342. Mile 68-1256.	
15	12-31-23	Lay new 90" rail in Main Track. Sta. 3473+50 to sta. 3579+30.	
242	12-31-23	Retire 395-7" x 1 1/2" tie plates from Main Track - Mile 67.	
345	11-20-24	Retire 1280-5 1/2" x 1 1/2" tie plates from Main Track - Mile 67.	
1020	12-31-25	Apply 135 Cu. Yd. slag ballast and convert 135 Cu. Yd. Stone ballast to emb. - Mile 68.	
1366	1925	Retire cross ties from Main Track. Mile 67-84. Mile 68-222.	
562	10-20-26	Apply add. 7" x 1 1/2" tie plates to Main Track. Mile 67-1013. Mile 68-1233.	
1429	12-31-26	Construct R/W Fence. S. side, sta. 3473+50 to 3482+60. Retire R/W Fence. S. side, sta. 3473+65 to 3482+60.	
801	11-22-28	Apply 60" Guard Rail with Money Guard Coil Fittings. Sta. 3479+15 to 3488+45.	
968	12-31-28	Place treated cross ties in Main Track. Mile 67-622. Mile 68-300.	
1605	1928	Construct R/W Fence. N. side, sta. 3544+00 to 3563+00. S. side, sta. 3553+00 to 3554+00. Retire R/W Fence. N. side, sta. 3537+67 to 3563+00. S. side, sta. 3537+67 to 3554+00.	
808	5-10-29	Apply add. 7" x 1 1/2" tie plates to Main Track. Mile 67-810. Mile 68-600.	
974	5-15-29	Lay 90" rail in Main Track - sta. 3539+09 to 3551+18. Apply Money guard rail fittings to present guard rail - sta. 3543+40 to 3550+50. Apply add. 60" x 2" guard rail - sta. 3541+20 to 3543+40.	
1190	May, 1931	Apply add. tie plates. Mile 67-204-7" x 1 1/2" and 20-7" x 1 1/2". Mile 68-123-7" x 1 1/2".	
1474	12-31-31	Replace 60" guard rail with cross ties with cross ties. - Mile 67.	
1606	1931	Construct R/W Fence. S. side, sta. 3490+50 to 3497+10. Retire R/W Fence. S. side, sta. 3484+91 to 3497+10 and 3497+10 to 3521+00. N. side, sta. 3484+91 to 3527+67.	
1300	6-24-32	Place 28 add. 7" x 1 1/2" tie plates to Main Track - Mile 68.	
1412	4-21-33	Construct surface drain on top of cut on N. side 530' N. of M.R. 68. 46' of 30" x 6" Pipe installed and 84 Cu. Yd. of open ditch.	
1449	2-28-34	Apply 103 add. 7" x 1 1/2" tie plates to Main Track - Mile 68.	
1546	5-22-34	Lay 90" rail in Main Track - sta. 3551+18 to sta. 3579+30. Apply 400 add. 90" rail anchors to Main Track - Mile 68.	
1563	Apr 1935	Apply 24 add. 7" x 1 1/2" tie plates - Mile 68.	
1737	12-31-36	Place tie plates in M.T. Mile 68.	



RIGHT-OF-WAY AND TRACK MAP
 EASTERN DIVISION
 TENNESSEE CENTRAL RAILROAD
 STATION 3473+50 TO STATION 3579+30
 SCALE 1 IN = 200 FT. JUNE 30, 1918

080-013

