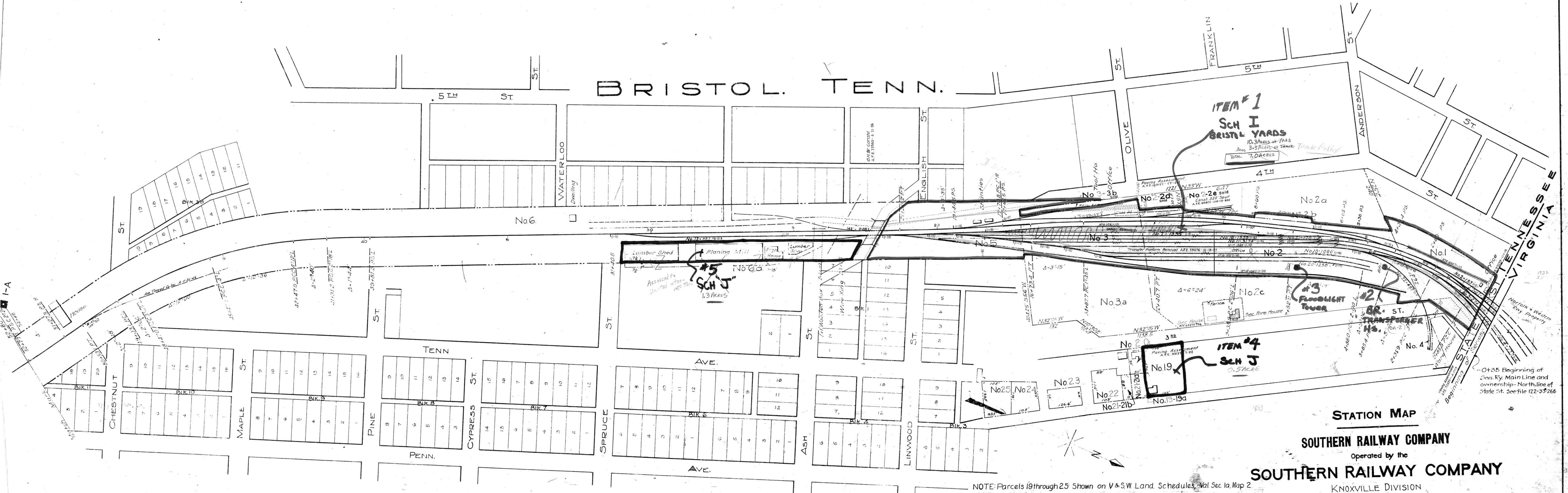


SULLIVAN COUNTY, TENN.

BRISTOL, TENN.



STATION MAP
SOUTHERN RAILWAY COMPANY
 Operated by the
SOUTHERN RAILWAY COMPANY
 KNOXVILLE DIVISION
 STATION 0+00 TO STATION 52+80
 SCALE 1"=100 FT. DEC. 31, 1927

THIS MAP WAS NOT PREPARED OR INTENDED FOR USE, AS A REAL ESTATE TITLE MAP. THE RAILWAY COMPANY DOES NOT REPRESENT OR SUGGEST THAT THE PROPERTY LINES AND RIGHT-OF-WAY LINES SHOWN ON THE MAP ARE ACCURATE, OR THAT ANY OTHER INFORMATION ON THE MAP IS CORRECT. THE COMPANY DOES NOT REPRESENT THAT IT HAS CHECKED THIS MAP FOR ACCURACY.

