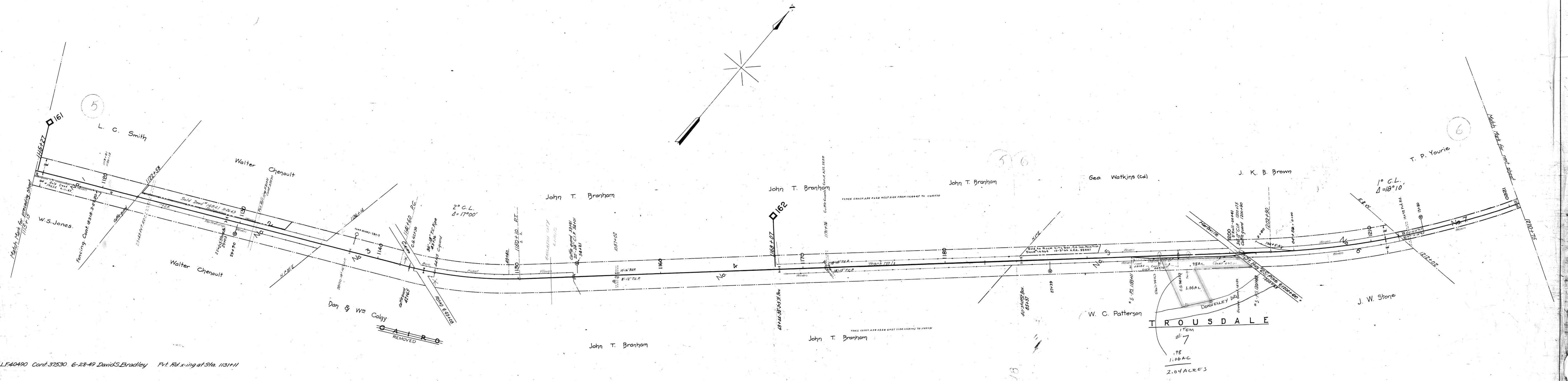


A.F.E. No. 5228
 Date Comp. 10-18-50
 Description of Change Const. of fence & moving C.G. of Const. Tr. S.A. #3 1204+59, 280'
 50162
 50174



LF40490 Cont. 37530 6-28-49 David S. Bradley Pnt. Rd. x'ing at Sta. 1131+11

- LF 6274 Cont. 28687 4-1-52 Detroit Parking Co. Lease of pt. of rwy of rwy. (Canc. 5-9-52)
- LF 39475 38535 9-1-50 Triopane Gas Inc. Const. of Tr. S.A. 282' 1204+56 - 0100
- 41925 39910 4-9-50 Gus Langford - water-line x'ing sta. 1204+55 - Canc. 4-7-54
- 42453 43780 9-9-57 Tenn. Dept. of Hwy. agreement for Const. of Hwy. No. 25 sta. 1200+60
- 6273 44476 8-1-60 ESCAMBIA TRIMMING CO. - LEASE OF 4,750 SQ. FT. RWY TO TRK #51 - Memo Form. 3-11-62 American Cresosote Works, Inc.
- 29531 8-1-63 T. S. S. Co., Inc. - Lease 50' x 70' x 5' - Memo 6-10-67 lease an additional 90' of track N.E.S.

Sheet 192 of 19 of Scottsville Branch from survey station 1115+15 to survey station 1220+75
 Valuation Engineer

RIGHT OF WAY AND TRACK MAP
 LOUISVILLE AND NASHVILLE R. R. CO.
 SCOTTSVILLE BRANCH
 STATION 1115-15 TO STATION 1220-75
 SCALE: 1 INCH = 200 FT. JUNE 30, 1917.