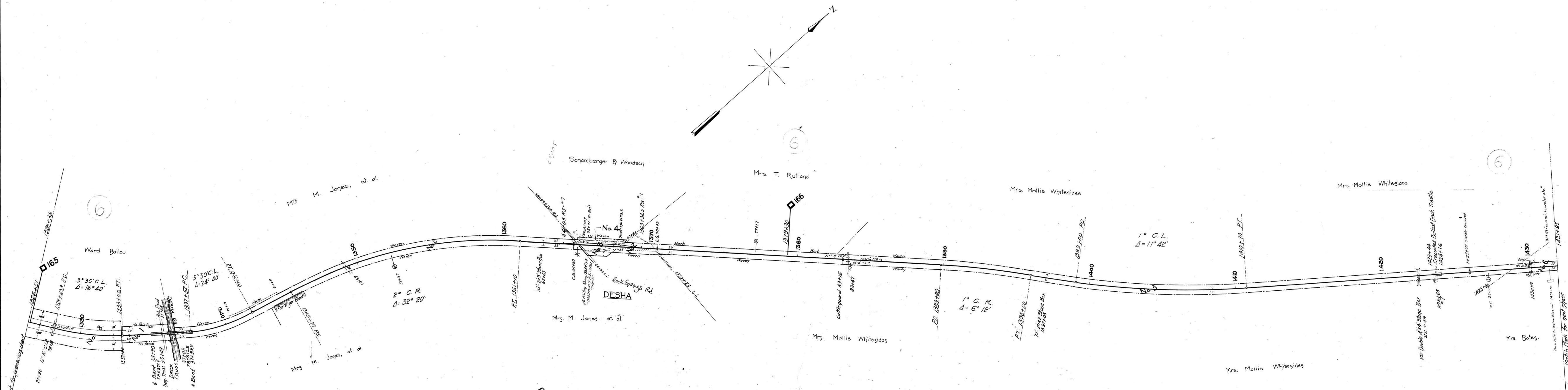


A.F.E. No. Date Comp. Description of change  
 14337 1-11-31 Driving Additional Piles Br. No. 5  
 38605 5-31-50 Rebuilt Br. #4 & 6 each with 6 Creo. Pile Bents  
 48639 3-25-58 Rebuilt Br. #7



Sheet No. 4 of 13 of Scottsville Branch from Survey Station  
 1326+35 to Survey Station 1431+95  
 Valuation Engineer

**RIGHT OF WAY AND TRACK MAP**  
**LOUISVILLE AND NASHVILLE R. R. CO.**  
**SCOTTVILLE BRANCH**  
 STATION 1326+35 TO STATION 1431+95  
 SCALE-1 INCH = 200 FT. JUNE 30, 1917.  
 OFFICE OF CHIEF ENGINEER  
 LOUISVILLE, KY.