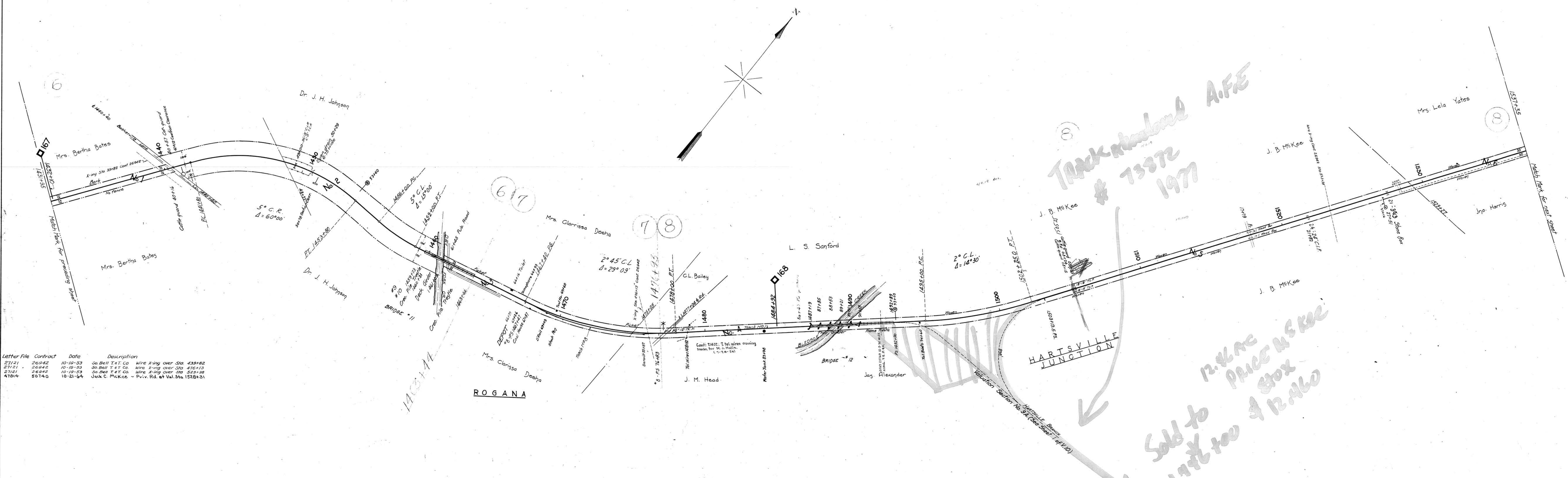


AFE 21537 6-9-37 Ret. of train order signal  
 " 22733 6-30-37 " Stock pens  
 " 23115 " 36 Ret. of 1st Derrick  
 " 23144 12-16-37 Ret. of frame combination station - Sold  
 " 31098 3-20-43 Ret. of Pump house  
 " 31221 3-19-43 "One mile to waterata" sign rem.  
 " 39731 4-24-50 Ref. water supply facilities Sta 1483+98 to 86+40 P.M.



Letter File	Contract	Date	Description
27121	26942	10-19-53	So Bell T & T Co Wire X-ing over Sta 439+82
27121	26942	10-19-53	So Bell T & T Co Wire X-ing over Sta 476+13
27121	26942	10-19-53	So Bell T & T Co Wire X-ing over Sta 523+36
47814	50140	10-21-64	Jack C. McKee - Priv. Rd. at Val. Sta 1528+31

Sheet No 5 of 13 of Scottsville Branch from survey station  
 1431+95 to survey station 1537+35  
 Valuation Engineer

RIGHT OF WAY AND TRACK MAP  
 LOUISVILLE AND NASHVILLE R. R. CO.  
 SCOTTSVILLE BRANCH  
 STATION 1431+95 TO STATION 1537+35  
 SCALE-1 INCH=200 FT. JUNE 30, 1917.  
 OFFICE OF CHIEF ENGINEER,  
 LOUISVILLE, KY.