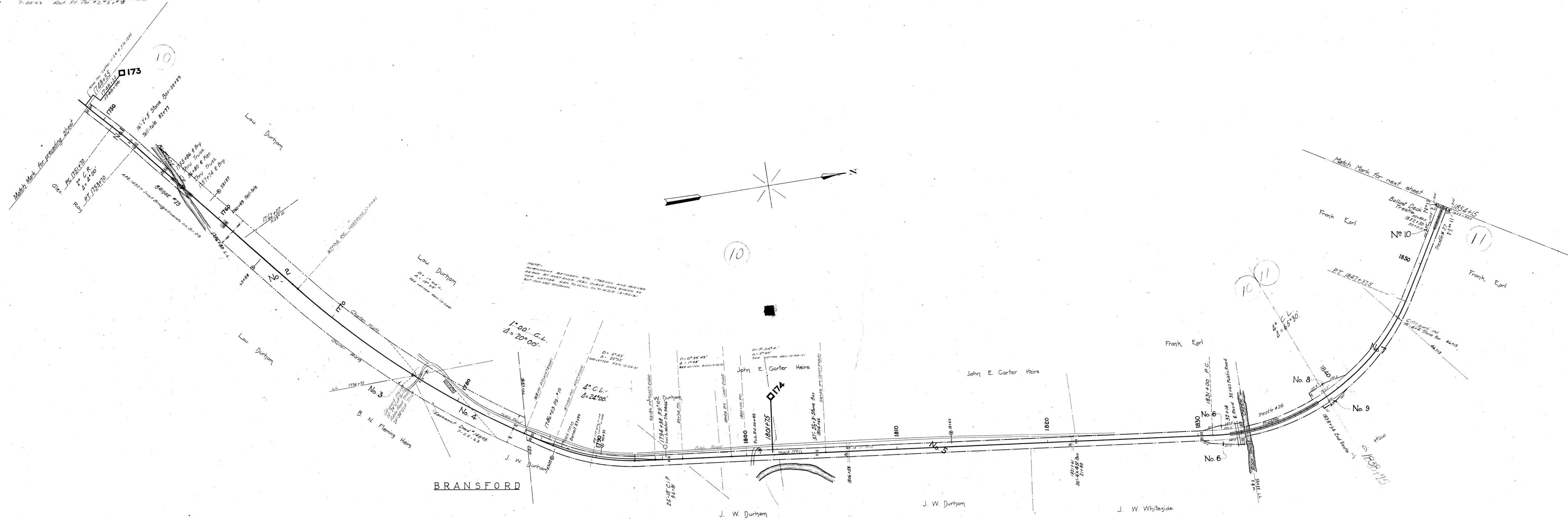


AFE No.	Date Comp.	Description of Change
14327	1-23-35	Inst Bridge spans across S. No. 23
14452	4-27-31	Bracing both sides, B-26 (no additional pike work)
21334	12-23-36	Sold - frame combination station
81221	3-12-35	One mile regulation of S. No. 23
55869	7-26-23	Rel. of S. No. 23, S. No. 24



Cont. 1/258 2-23-55 North Central Tel. Corp. Wire 1-109 Sta 89177

Sheet 198 of 13 of Scottsville Branch from survey station 1748+55 to survey station 1854+15
 Valuation Engineer

RIGHT OF WAY AND TRACK MAP
 LOUISVILLE AND NASHVILLE R. R. CO.
 SCOTTSVILLE BRANCH
 STATION 1748+55 TO STATION 1854+15
 SCALE-1 INCH=200 FT. JUNE 30, 1917.