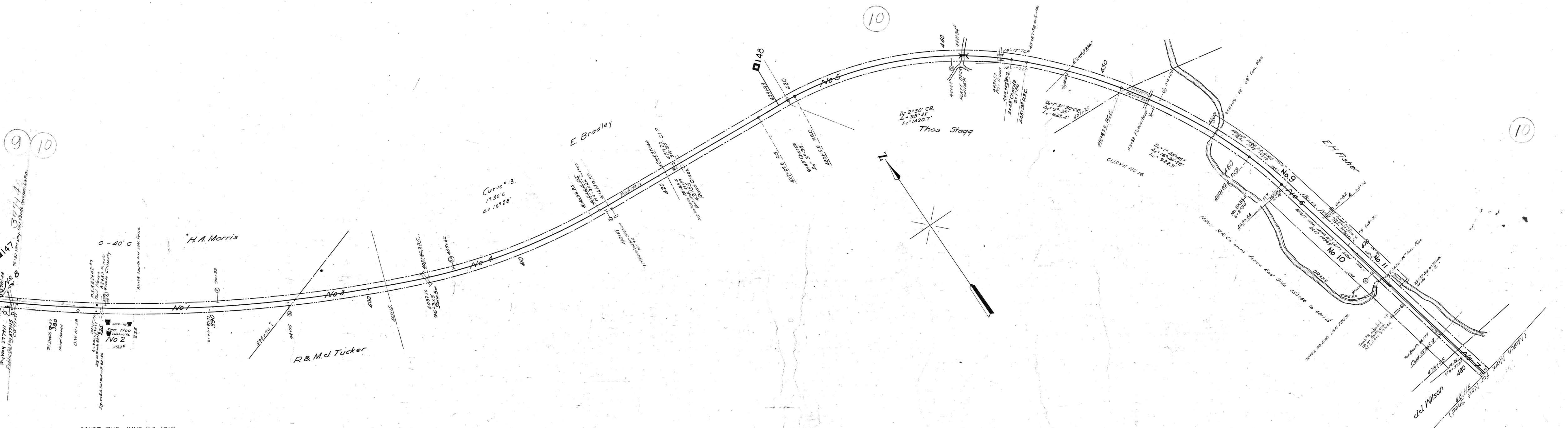


A.F.E. No.	Date Comp.	Desc. of Change
3551	7-3-25	Wg Mags 7741, 7742, 7743
3575	6-22-25	Wg Mags 7741, 7742, 7743
3583	1-15-25	Wg Mags 7741, 7742, 7743
3588	1-17-27	Install of cistern of sec. houses
16262	4-10-27	Sold part of
21512	12-31-25	Water to sec. 1, Res. Ret. fired at Buck Lodge
24977	2-16-39	One mile to water sta. from sec. 1
31123	3-15-19	Ret. of Tr. 1
34854	1-18-25	Ret. of Tr. 1
47576	7-24-26	Extend Cont. Pps to Sta. 421+20, 12" on West Side, 10" on East Side
48096	2-27-27	Extend Cont. Pps to Sta. 421+20, 12" on West Side, 10" on East Side
46149	9-27-57	Ret. Br. & 28 Replace with Cont. Pipe
46150	9-27-57	" " " " "

Par. No.	Grantor	Grantee	Inst.	Date	Record	Cust. No.	Remarks
1	J. B. DAVIS	L. A. H. D. Co.	"	"	"	1367	"
2	J. B. DAVIS	"	"	"	"	1368	"
3	J. B. DAVIS	"	"	"	"	1369	"



CONST. SUB. JUNE 30, 1917.  
Fence from sta. 399+06 to sta. 425+13, on west side, A.F.E. 5789 Comp. 1-18-25

CURVE 13 Letter 12-22-33 C. Engrs. File 97  
14 Sketch Aug 1931 File 101-3 Vol. 6

L.F. 35167	Cont. 37366	6-7-49	Cumberland Electric Membership Corp.	Wire x-ing over at Sta. 420+51
"	Cont. 37367	6-7-49	"	"
"	Cont. 37368	6-7-49	"	"
"	Deed 143183	10-6-55	R.H. & Hazel Combs	Tree cutting permit. West side. Sta. 401+15 to 432+00
"	143183	10-31-55	Floyd & Willie Hunter	"

Sheet 1105 of 23 of Main Stem Second Division from survey station 375+55 to survey station 481+15

RIGHT OF WAY AND TRACK MAP  
LOUISVILLE AND NASHVILLE R. R. CO.  
MAIN STEM SECOND DIVISION  
STATION 375+55 TO STATION 481+15  
SCALE-1 INCH = 200 FT. JUNE 30, 1917.  
OFFICE OF CHIEF ENGINEER  
LOUISVILLE, KY.