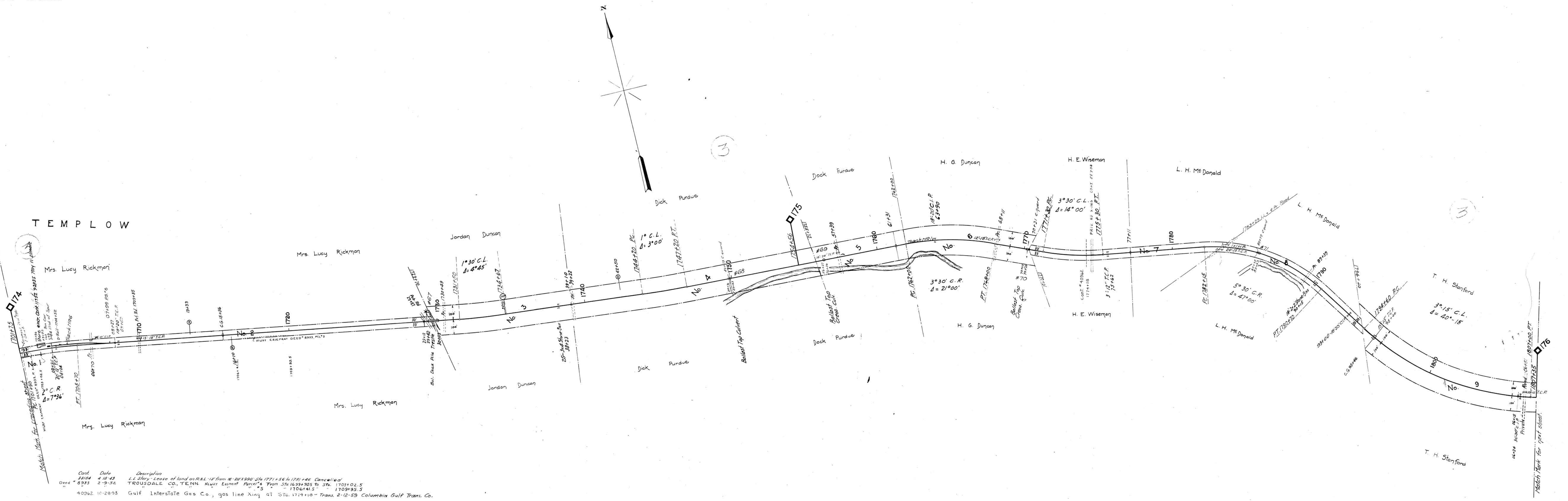


3

3

TEMPLOW



Cont.	Date	Description
32104	4-18-43	1/2 Story Lease of land on R.R.L. 12' from M-20+190 to 177+56 to 179+46 Cancelled
Deed 6293	2-9-32	TROUSDALE CO, TENN. Hwy. Easmt. Parcels From Sta. 1629+505 to Sta. 1703+02.5
40962	10-28-53	Gulf Interstate Gas Co., gas line Xing at Sta. 1714+18 Trans. 2-12-59 Columbia Gulf Trans. Co.

Sheet 19A of 6 of Hartsville Branch from survey station 1701+75 to survey station 1807+35
W. H. ...
 Valuation Engineer

RIGHT OF WAY AND TRACK MAP
 LOUISVILLE AND NASHVILLE R. R. CO.
 HARTSVILLE BRANCH
 STATION 1701+75 TO STATION 1807+35
 SCALE-1 INCH = 200 FT. JUNE 30, 1917.
 OFFICE OF CHIEF ENGINEER,
 LOUISVILLE, KY.