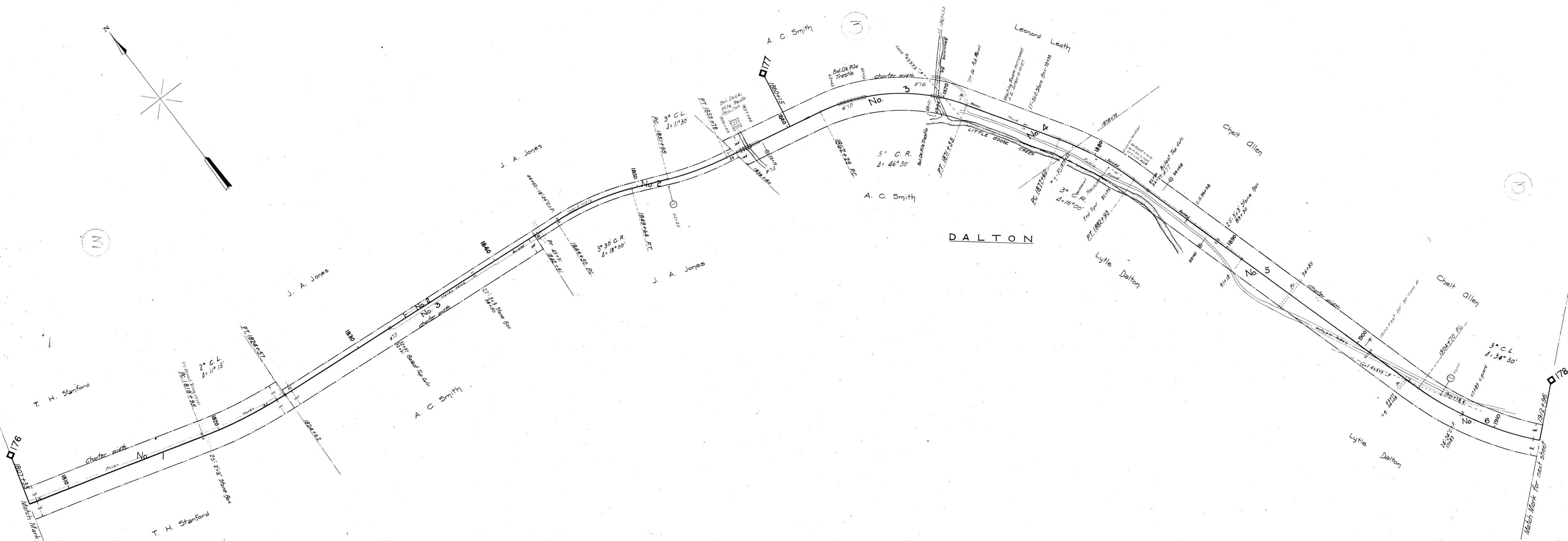
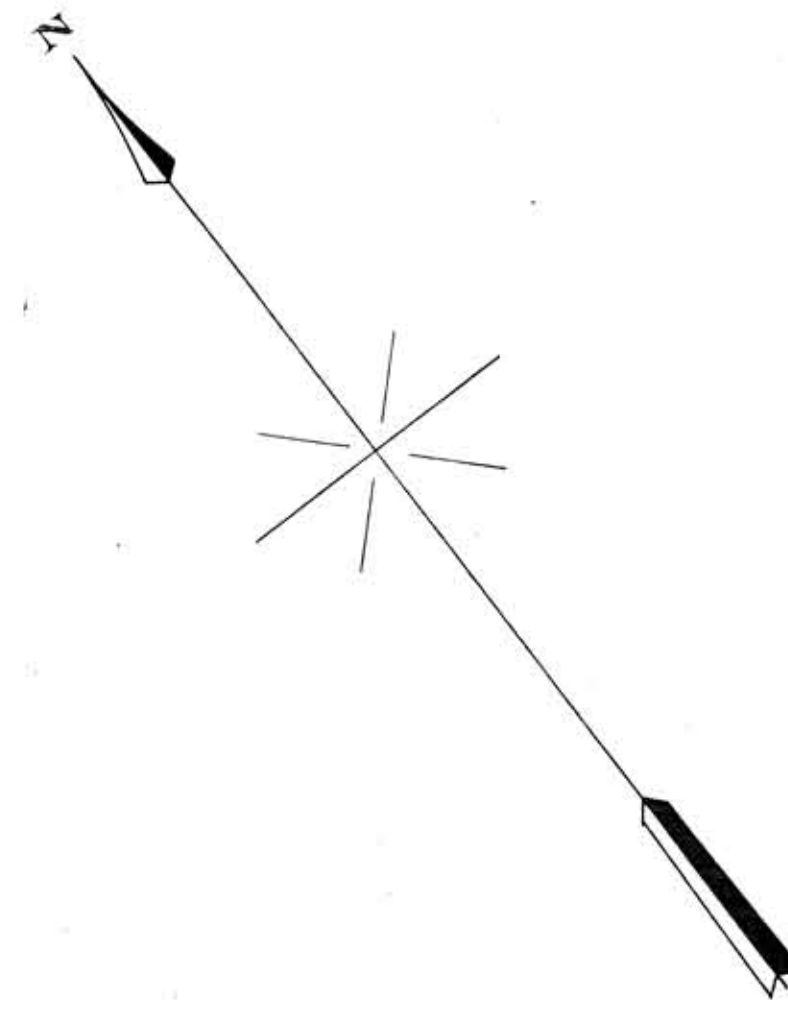


AFE No. Date Comp. Description of change  
 4226 1-2-23 Trk No. 7 Est. 66'  
 21405 12-15-26 " " 7 Ret.  
 4477 1-15-28 Dept. Trk " 78 with 20' 30" Curve R. Sta. 1900+23.7



Cont # 43373 Gulf Interstate Gas Co. ~ 2" 2 1/2" Gas Line X-rings Under Sta. 1870+00 & Sta 1904+06 ~ Trans. 2-12-59 Columbia Gulf Trans. Co.

Sheet 175 of 6 of Hartsville Branch from survey station  
 1807+35 to survey station 1912+96  
*W. H. Williams*  
 Valuation Engineer

**RIGHT OF WAY AND TRACK MAP**  
**LOUISVILLE AND NASHVILLE R. R. CO.**  
**HARTSVILLE BRANCH**  
 STATION 1807+35 TO STATION 1912+96  
 SCALE-1 INCH=200 FT. JUNE 30, 1917.