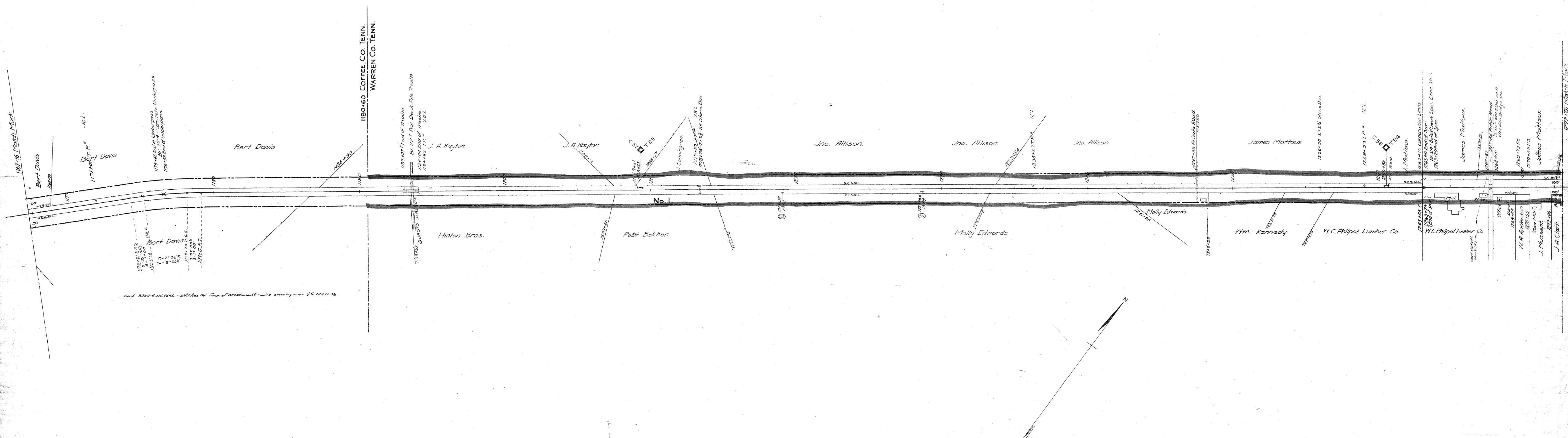


No.	GRANTOR	GRANTEE	INSTRUMENT	DATE	RECORDED	CUST. NO.	REMARKS
1			None				See Note 1

Note 1- Charter with claimed under decisions of Tennessee Courts.
 The road from Tullahoma to McMinnville, a distance of 35 miles, was constructed by the McMinnville and Manchester R.R.Co., about the year 1856. Under a Chancery decree dated July 10, 1875 this road was sold to the Memphis and Charleston R.R.Co. On July 28, 1877 the Memphis and Charleston R.R.Co. sold the road to the Nashville, Chattanooga & St. Louis Railway.



Cont. 3209-9-11-1916. - Within the Town of McMinnville - wire crossing over V.S. 1227136.

RIGHT-OF-WAY AND TRACK MAP
 NASHVILLE, CHATTANOOGA AND ST. LOUIS RY.
 SPARTA BRANCH
 STATION 1167+16 TO STATION 1272+76
 SCALE, 1 IN. = 200 FT. JUNE 30, 1916

Sheet No. 12 of 44. Sheets of Sparta Branch, from survey station 1167+16 to survey station 1272+76.
 Valuation Engineer

M.P. 222 to 242

COFFEE & WARREN COS. TENN.

089-001

707-A-12