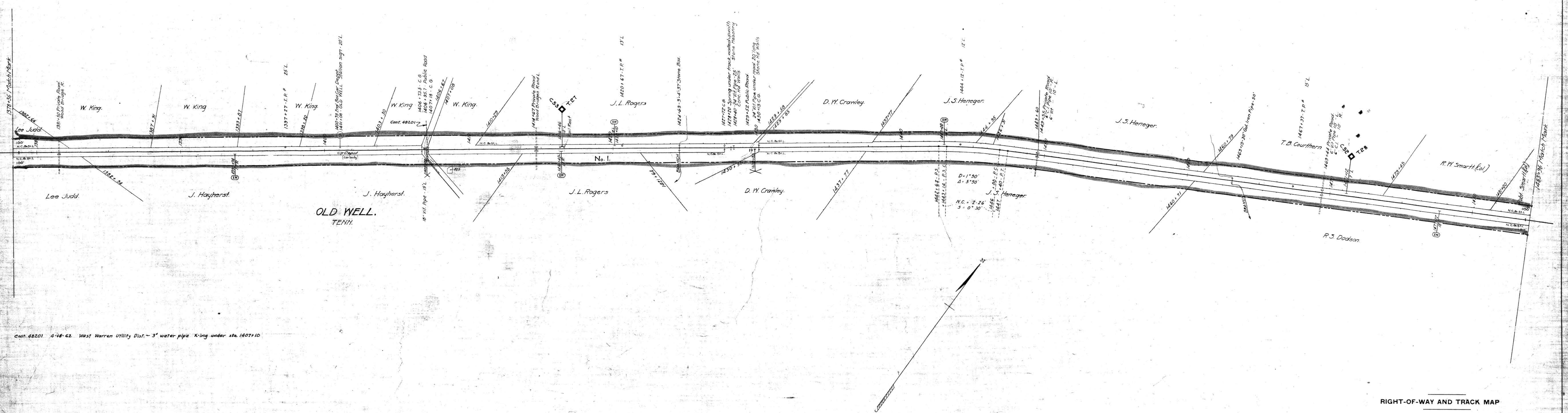


Note 1- Charter with claimed under decisions of Tennessee Courts.
 The road from Tullahoma to McMinnville, a distance of 35 miles, was constructed by the McMinnville and Manchester R.R. Co. about the year 1856. Under a Chancery decree dated July 10, 1875 this road was sold to the Memphis and Charleston R.R. Co. On July 26, 1877 the Memphis and Charleston R.R. Co. sold the road to the Nashville, Chattanooga & St. Louis Railway.



Cont. 88201 4-18-62 West Warren Utility Dist. - 3" water pipe X-ing under sta. 1407+10

RIGHT-OF-WAY AND TRACK MAP
 NASHVILLE, CHATTANOOGA AND ST. LOUIS RY.
 SPARTA BRANCH

STATION 1378+36 TO STATION 1483+96
 SCALE, 1 IN. = 200 FT. JUNE 30, 1916

Sheet No. 14 of 44 Sheets of
 Sparta Branch from survey
 station 1378+36 to survey station
 1483+96
 Division Engineer

M.P. 26.2 to 28.2