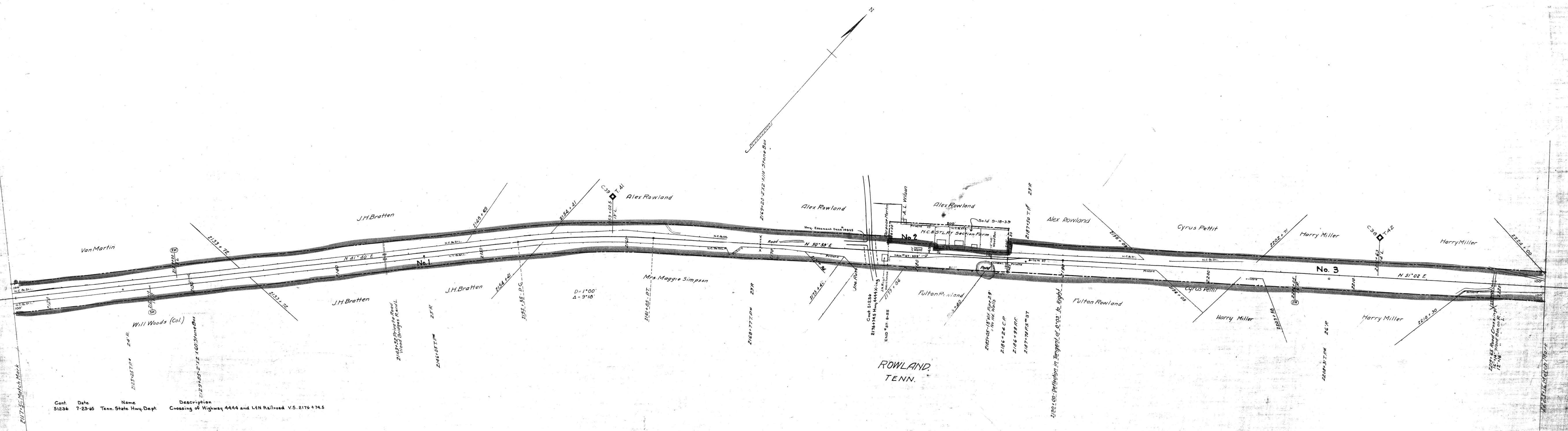


AFE Date Description  
 58556 12-29-65 Ret. 202' of 1-rk. No. 37 at Rowland Tenn.  
 60479 120683 6-12-67 Ret. pass. Shafter

NO.	GRANTOR	GRANTEE	INSTRUMENT	DATE	RECORD	CUST. NO.	REMARKS
1	A.W. Rowland	N. & C. R.R. Co.	None	Dec. 6, 1880	DB 11-321-Mch. 2, 1882	3006	See Note 1
2			None				See Note 1
3			None				See Note 1

Note 1- Charter with claimed under decisions of Tennessee Courts.  
 The road from McMinnville to Sparta was partly graded by the Southwestern R.R. Co.; it was chartered in the year 1852, was sold to the Nashville, Chattanooga & St. Louis Railway which Company completed the road.



Cont. Date Name Description  
 51236 7-23-65 Tenn. State Hwy. Dept. Crossing of Highway 4444 and L&N Railroad V.S. 2176 + 74.5

RIGHT-OF-WAY AND TRACK MAP  
 NASHVILLE, CHATTANOOGA AND ST. LOUIS RY.  
 SPARTA BRANCH

STATION 2117+56 TO STATION 2223+16  
 SCALE, 1 IN. = 200 FT. JUNE 30, 1916

Sheet No. 21 of 44 Sheets of  
 Sparta Branch, from survey  
 station 2117+56 to survey station  
 2223+16  
 Valuation Engineer

M.P. 40.2 to 42.2