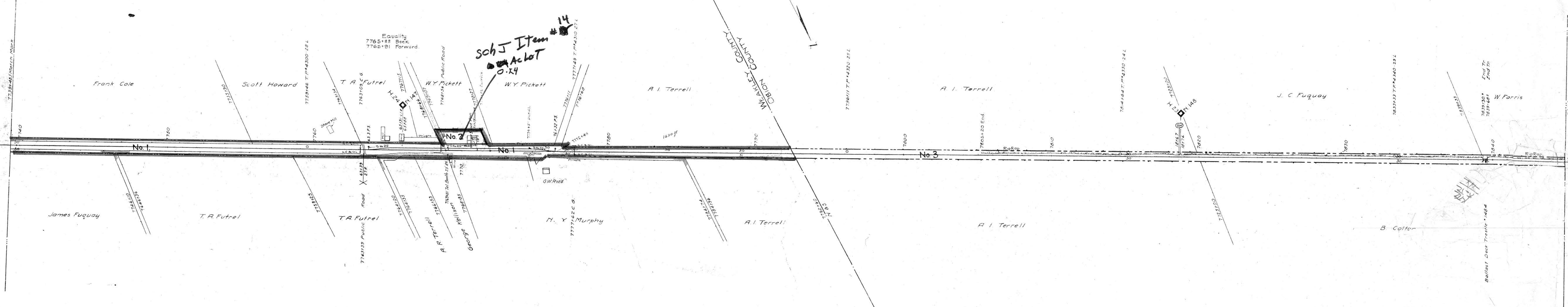


TERRELL,
TERRI.

Sch J Item #14
Ac Lot 0.24

WEAKLEY COUNTY, TENN. N.O.B.C.



Sheet - 18 of 18
RIGHT-OF-WAY AND TRACK MAP
NASHVILLE, CHATTANOOGA AND ST. LOUIS RY.
NASHVILLE DIVISION - Sch J 14
STATION 7739+48.5 TO STATION 7945+11.5
SCALE, 1 IN. = 200 FT. JUNE 30, 1916
OFFICE OF CHIEF ENGINEER
NASHVILLE, TENN.
M.P. 146.5 to 148.
Valuation Engineer

16
73