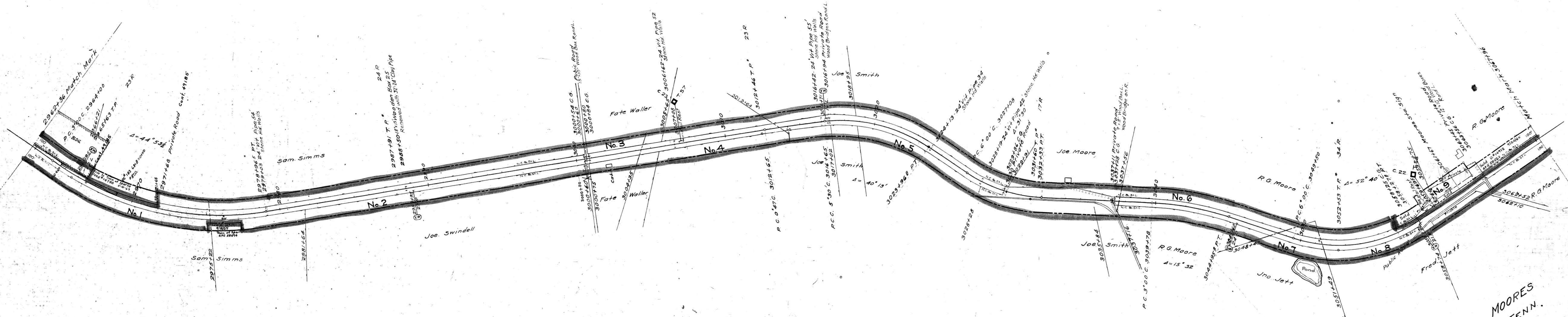


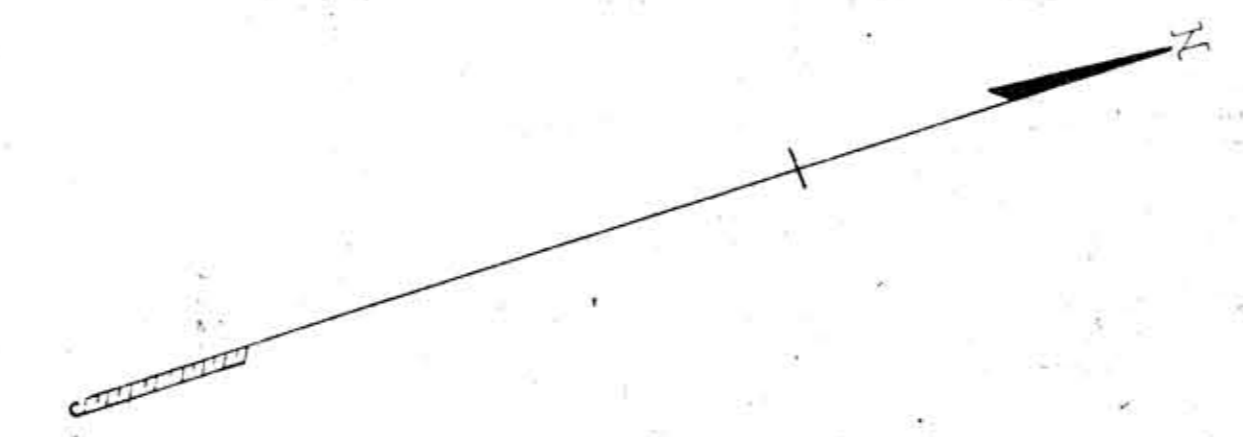
A.F.E. DATE COMPLETED DESCRIPTION
 55710 5-10-63 Sale of Pt. of Par. 1; and Pt. of Par. 16 on Map 28
 58552 4-22-65 Sale of Pt. of par. 7a and 2d of par. 2
 58703 5-19-63 Cont. of Tr. 17/23 57a 48-48

NO.	GRANTOR	GRANTEE	INSTRUMENT	DATE	RECORD	REF. NO.	REMARKS
1	F.L. Brogden	N.C. & St. L. Ry.	None				See Note 1
2	Frank Arnold	N.C. & St. L. Ry.	None				See Note 1
3	Canon Smith	N.C. & St. L. Ry.	None				See Note 1
4	Joe Smith	N.C. & St. L. Ry.	None				See Note 1
5	Ad Smith	N.C. & St. L. Ry.	None				See Note 1
6	R.G. Moore	N.C. & St. L. Ry.	None				See Note 1
7	A.O. Jett	N.C. & St. L. Ry.	None				See Note 1
8	R.G. Moore	N.C. & St. L. Ry.	None				See Note 1
9	R.G. Moore	N.C. & St. L. Ry.	Deed	Oct. 10, 1884	DB 27-489-Oct. 10, 1884	3026	

Note 1- Charter width claimed under decisions of Tennessee Courts.
 The road from McMinnville to Sparta was partly graded by the Southwestern R.R. Co.; it was chartered in the year 1852, was sold to the Nashville, Chattanooga & St. L. Ry. which Company completed the road.



Cont. 49185 5-10-63 Industrial Development Bd Town of Sparta 40' Ed King 7/1/68
 6-13-63 Trk 182 A 183



RIGHT-OF-WAY AND TRACK MAP
 NASHVILLE, CHATTANOOGA AND ST. LOUIS RY.
 SPARTA BRANCH

STATION 2962+36 TO STATION 3067+96
 SCALE, 1 IN. = 200 FT. JUNE 30, 1916

Sheet No. 29 of 44 Sheets of
 Sparta Branch from survey
 station 2962+36 to Survey station
 3067+96

OFFICE OF CHIEF ENGINEER
 NASHVILLE, TENN.
 E. J. [Signature]
 Station Engineer

M.P. 562 to 582
 MOORES