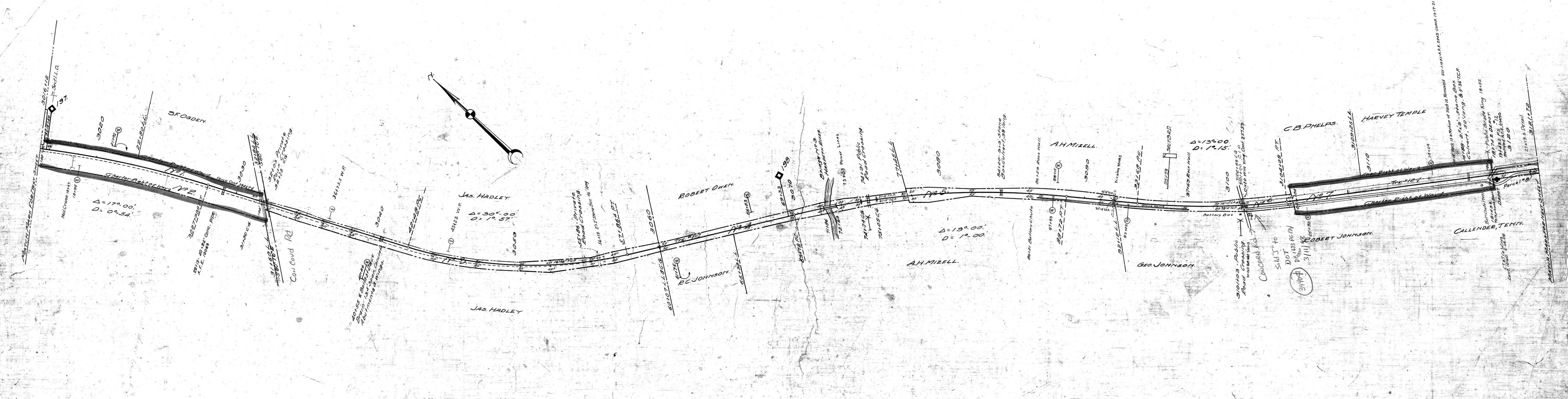


A. E. No. Date Comp. Description of Change  
 2063 Feb 15, 1928 Repl. 5x3 at box with 2 1/2" conc. pipe  
 2243 Dec. 17, 1921 Det. of all or taking up a part of No. 2  
 3107 Feb. 3, 1923 Det. of all or taking up a part of No. 2  
 37490 Dec. 1945 Repl. Track with 60" dia. pipe  
 37516 6-16-48 Install Signal No. 74 5' 400' SE of 1946

NOTE: See list of revisions C-832 101-3



Cont. 28375 2-13-35 Jas. F. Eggleston Fence on Tr. 45' out of 1110 to 1190 to 45' out of 312010  
 28910 7-3-36 Tenn. Imp. Orphans Home Water line X-ing 485' North of M.P. 199  
 Cont. 31175 11-9-36 City of Nashville, Tenn. Water X-ing at 3095+10  
 32715 3-5-42 2 Wires (162) over at Stas. 3035+72, 3092+21, 3122+18  
 38023 1-2-51 Sta. 73+53  
 39427 9-19-51 J.M. Houghtland Fence on East Side of R.W. Sta. 016+22 to 032+03

SHEET NO. 5 OF 22 OF NASHVILLE AND DECATUR DIVISION FROM SURVEY  
 STATION 3016+12 TO SURVEY STATION 3121+72

RIGHT OF WAY AND TRACK MAP  
 NASHVILLE AND DECATUR R. R. CO.  
 OPERATED BY  
 LOUISVILLE AND NASHVILLE R. R. CO.  
 STATION 3016+12 TO STATION 3121+72  
 SCALE: 1 INCH = 200 FT. JUNE 30 1917.

094-002

