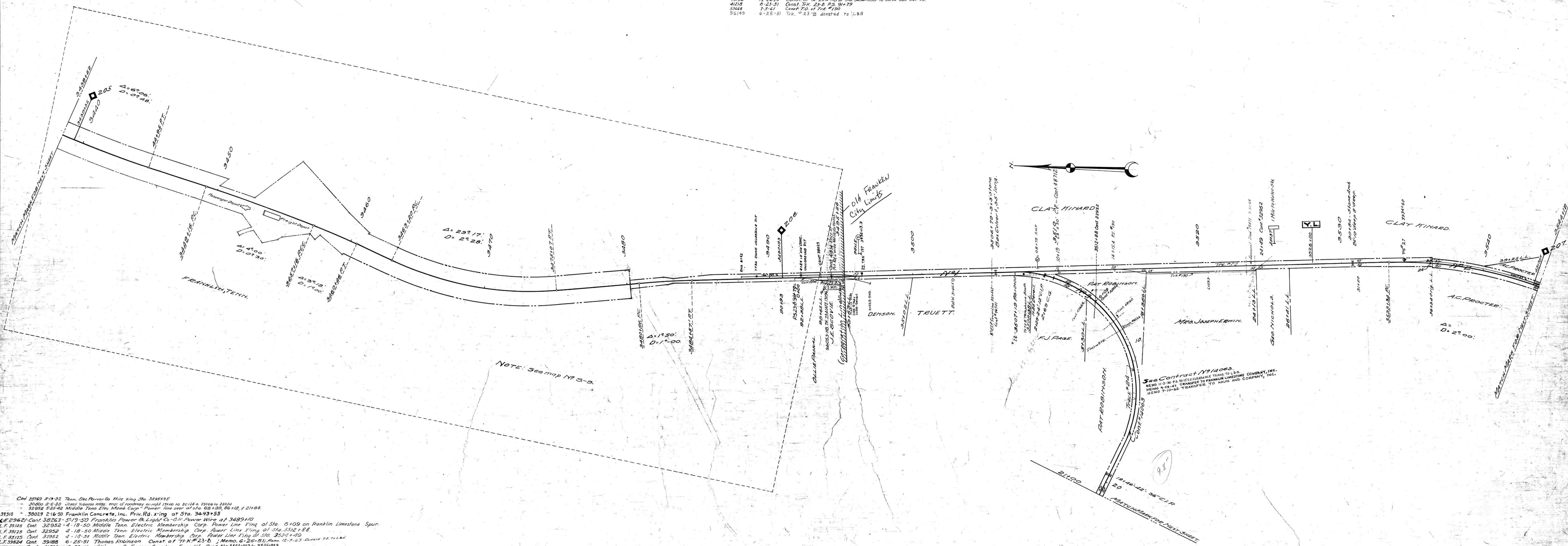


AFE No.	Date Comp.	Description of Change
13106	12-26-29	Const of Tr. 234+12 at Sta. 3434+05.3 to serve Gulf Ref. Co.
41218	6-23-51	Const. Trk. 23-B, P.S. 91+79
53668	7-3-61	Const. T.O. of Trk. #190
56149	6-25-51	Trk. #23-B donated to L.B.N.



- Cont. 28769 5-19-32 Tenn. Elec. Power Co. Wire X'ing Sta. 3485+75
- " 30200 12-6-38 "Shell Tobacco Miss. ener. of roadway on right 17140 to 20158 & 25100 to 35150
- " 32852 5-26-42 Middle Tenn. Elec. Membr. Corp. Power line over at sta. 60+30, 86+12, & 21+84
- 39310 " 39029 2-16-50 Franklin Concrete, Inc. Priv. Rd. X'ing at Sta. 3493+55
- 29621 Cont. 38263 5-19-50 Franklin Power & Light Co. O.H. Power Wire at 3489+10
- L.F. 35125 Cont. 32952 4-18-50 Middle Tenn. Electric Membership Corp. Power Line X'ing at Sta. 3512+88
- L.F. 35125 Cont. 32952 4-18-50 Middle Tenn. Electric Membership Corp. Power Line X'ing at Sta. 3512+88
- L.F. 35524 Cont. 39188 6-25-51 Thomas Robinson Const. of Trk. #23-B; Memo. 6-25-51, Memo. 12-2-63 Quire to Trk. #23-B
- Cont. 41834 12-28-54 Williamson Co. Farmers Coop. Inc. - Ener. 6' for Road Sta. 3444+05.3 to 3445+05.3
- 44321 12-21-60 City of Franklin, Tenn. - 8" C.I.P. Sewer Line X'ing V.S. 3505+67
- 47561 7-3-61 Lasko Metal Products, Inc. Const. Trk. #190
- 47565 11-1-61 City of Franklin - 8" sewer line X'ing V.S. 28 of 24, 249
- 48160 6-30-62 Franklin Power & Light Co. - Wire X'ing over Trk. #24 at Sta. 3+86
- L.F. 38469 Cont. 48249 6-4-63 City of Franklin, Tenn. - 2" Gas Line X'ing under Trk. #24 at Sta. 8+81
- 48712 11-26-62 Lasko Metal Products, Inc. - 24" Conic pipe X'ing under Sta. 3510+15
- 57255 10-7-61 Breaks, Inc. - Const. track No. 197 and install 10'x10' concrete unloading pit underneath at V.S. 3491+89

See Contract No. 14003
 MEMO 11-5-30 P.S. TO CLEARANCE TRANS. TO L.B.N.
 MEMO 4-28-41 TRANSFER TO FRANKLIN LIMESTONE COMPANY, INC.
 MEMO 7-10-62 TRANSFER TO HAUN AND COMPANY, INC.

RIGHT OF WAY AND TRACK MAP
 NASHVILLE AND DECATUR R. R. CO.
 OPERATED BY
 LOUISVILLE AND NASHVILLE R. R. CO.
 STATION 3438+52 TO STATION 3544+12
 SCALE: 1 INCH = 200 FT. JUNE 30, 1917

094-006



WILLIAMSON COUNTY, TENN.