



# Hawaii Aeronautics Commission

HONOLULU, HAWAII, U.S.A.

*Annual Report - June 30, 1954*

## *Commissioners*



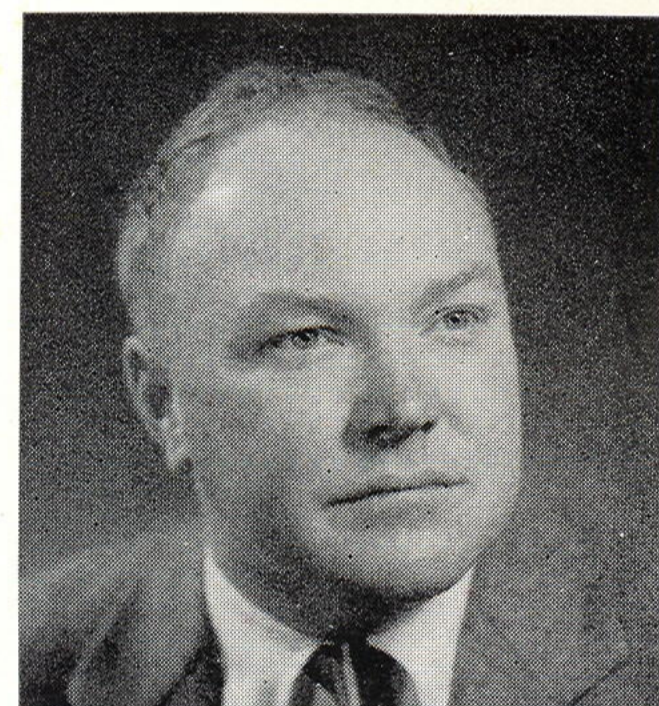
O. J. Burnett



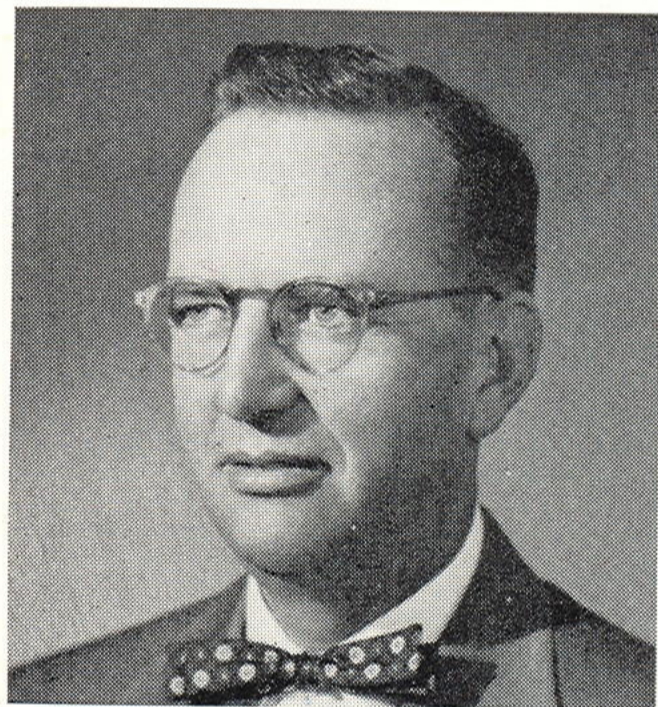
Ralph C. Honda



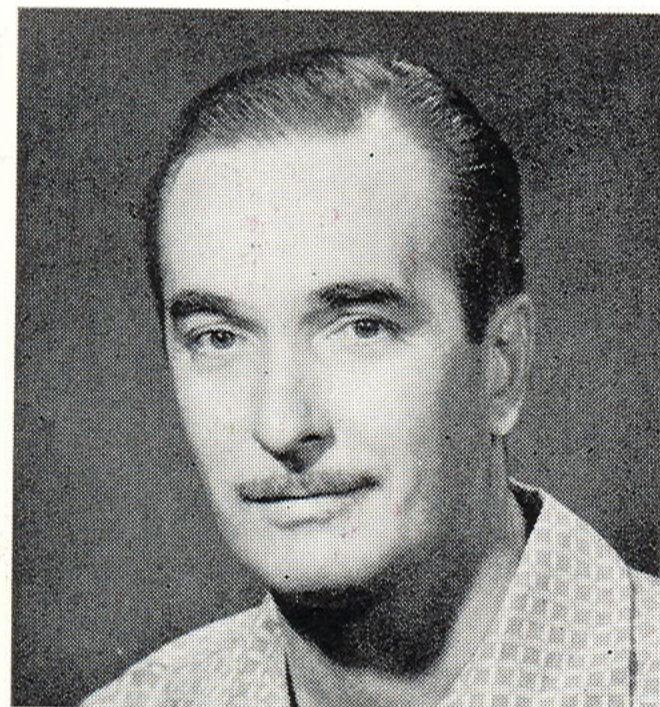
Harold W. Rice



Charles J. Pietsch, Jr.



Dorsey W. Edwards



David Furtado



Richard H. Wheeler

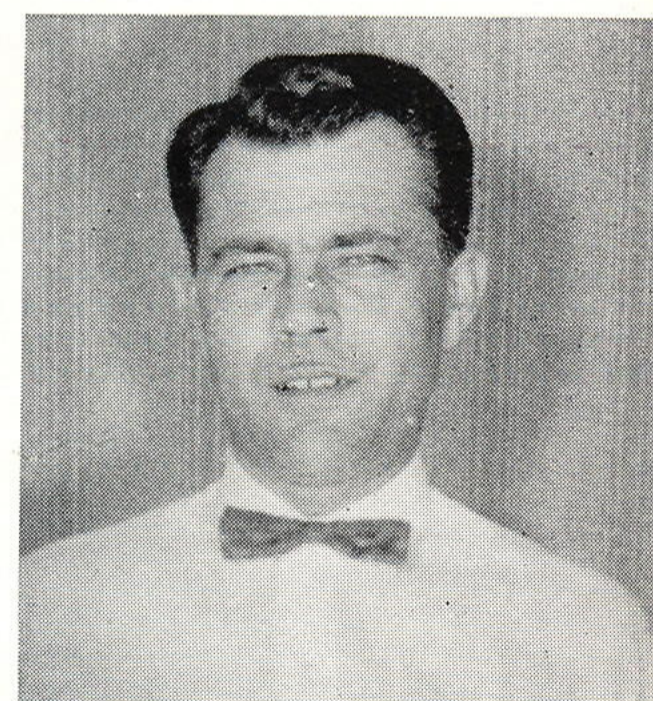


Roy A. Vitousek, Jr.

## *Executive Officers*



Randolph M. Lee



John E. Batchelder

# HAWAII AERONAUTICS COMMISSION



2nd Floor  
OVERSEAS TERMINAL  
BUILDING  
HONOLULU  
INTERNATIONAL AIRPORT

## *Commissioners*

Francis K. Sylva . . . . .	<i>Chairman</i>
Charles J. Pietsch, Jr. . . . .	<i>Vice Chairman</i>
Ralph C. Honda . . . . .	<i>Secretary</i>
O. J. Burnett . . . . .	<i>Member—Oahu</i>
Roy A. Vitousek, Jr. . . . .	<i>Member—Oahu</i>
Richard H. Wheeler . . . . .	<i>Member—Oahu</i>
Harold W. Rice . . . . .	<i>Member—Maui</i>
David Furtado . . . . .	<i>Member—Hawaii</i>
Dorsey W. Edwards . . . . .	<i>Member—Kauai</i>

## *Executive Officers*

Randolph M. Lee . . . . .	<i>Director of Aeronautics</i>
John E. Batchelder . . . . .	<i>Asst. Director of Aeronautics</i>

## *Airport Managers*

Mark E. Martin . . . . .	<i>Honolulu</i>
Henry C. Peters . . . . .	<i>Asst. Manager, Honolulu</i>
Charles W. Dahlberg . . . . .	<i>Hawaii</i>
Coin E. Perin . . . . .	<i>Kauai</i>
William Neilson . . . . .	<i>Maui</i>
Bo Tong Wat . . . . .	<i>Finance Executive</i>

\* Cover drawing is an artist's rendering of proposed new Honolulu passenger terminal buildings.



Honorable Samuel Wilder King  
Governor of Hawaii

# *Excerpts*

## from report to Governor

Honolulu International Airport accommodated 255,385 aircraft operations as compared to 194,129 the previous year. Contributing heavily to the increase was the movement of military aircraft. On a national scale, Honolulu Airport handled the largest number of military aircraft movements of any civilian facility.

Due, for the most part, to the general acceptance of tourist class travel, overseas passenger traffic increased 12.7% to 205,840 passengers—a new all-time high.

Inter-island traffic also achieved a record high of 570,263 passengers, or an increase of 2.8 per cent.

These outstanding increases all combined to make Honolulu International Airport the 4th busiest in the nation.

Plans to extend the Kona Airport runway, Kona, Hawaii, to a length of 4,900 feet were suspended during the past year as the result of two injunction suits filed in the first circuit court, followed by an order of the court temporarily restraining the Hawaii Aeronautics Commission from proceeding with its plans. The suits allege that extension of the existing runway at both ends would deprive the plaintiffs, both nearby property owners, of full use of their properties by limiting the heights of buildings to be constructed in the area. At present, the litigation awaits a court hearing.

Preliminary plans for a new passenger terminal at Honolulu International Airport were approved by the Commission in March of this year. Immediately following approval of the preliminary plans, authorization was granted to proceed with construction plans and specifications. According to the timetable set by the Superintendent of Public Works, actual construction is to start on this project not later than mid-1955.

Events of interest during the year include the inauguration in February of trans-Pacific service between Tokyo and San Francisco via Honolulu by Japan Air Lines. Qantas Empire Airways, an Australian air line, now provides the air services formerly furnished by BCPA between the Antipodes and the Pacific Coast.

---

While on a visit to Hawaii in May, Mr. Robert B. Murray, Jr., Under Secretary for Transportation, U. S. Department of Commerce, met with members of the Commission to discuss federal-territorial airport problems. Following discussions, Mr. Murray offered the assistance of his office whenever needed to help resolve aeronautical problems confronting the territory.

---

---

In support of its policy favoring competitive airline services, the Commission during the past year filed statements with the Civil Aeronautics Board unanimously endorsing the recertification of Trans-Pacific Airlines, Ltd., as one of two scheduled inter-island air carriers, and in support of Northwest Airlines' recertification as a carrier to operate direct service between the Pacific Northwest co-terminals and Honolulu.

---

---

Despite gains in the volume of air passenger traffic, there was a substantial decrease in revenues from fuel tax collections—the major source of operating income for the Commission. Fuel tax receipts for the past year totaled \$993,906. This represents a decrease of 28.6 per cent, as compared with the previous year's total of \$1,392,851.

---

---

The decrease was anticipated, however, and was primarily the result of the "phasing out" of the Korean Air-lift, which officially terminated on March 31, 1954. Reduction of the aviation fuel tax rate from 4 to 3½ cents per gallon, a law which became effective July 1, 1953 contributed to the drop in fuel tax income.

---

---

Revenue from other airport fees and charges amounted to \$596,700. In addition, \$172,099 was received from Federal Grants and \$86,345 from other sources. Operating expenditures totaled \$951,658. The sum of \$981,193 was expended for new construction and equipment, and \$32,988 for bond redemption.

---



Respectfully yours,

A handwritten signature in cursive script that reads "Francis K. Sylva". The signature is written in dark ink and is positioned above the printed name.

FRANCIS K. SYLVA,  
Chairman, Hawaii Aeronautics Commission

# The Year's Notable Events

1953

- July
- New law (Act 213, SL 1953), reducing territorial aviation gasoline tax from four cents to three and a half cents a gallon, takes effect.
  - HAC endorses United Air Lines' certificate of public convenience and necessity for continued service between Los Angeles and Honolulu.
- Aug.
- Dedication of Kamuela's \$1,000,000 airport on Hawaii Island, built entirely with territorial funds.
- Sept.
- Medium intensity lighting system for runway 4L-22R, Honolulu International Airport, completed.
  - Molokai Airport drainage system project completed.
- Nov.
- Hangar for private planes at Hilo Airport completed.
  - Peyton Harrison resigns as Director of Aeronautics, effective November 30.
  - Northwest Orient Airlines starts tourist fare service between Hawaii, Portland and Seattle-Tacoma.
- Dec.
- Randolph M. Lee, formerly assistant director of aeronautics, takes office as new director of aeronautics by Commission appointment.
  - Huge crowd from Hilo and vicinity witness dedication of new \$600,000 administration and terminal building at Hilo Airport. Dedication program features talks by government and airlines officials, public inspection of new terminal facilities, aircraft exhibit and free airplane rides in private aircraft.
  - John E. Batchelder, Jr., named new assistant director of aeronautics.
  - Canadian Pacific Airlines begins tourist fare service between Vancouver, B. C. and Hawaii.
  - J. M. Tanaka submits low bid of \$163,247 for Kona Airport runway extension project. Commission awards contract to Mr. Tanaka.

1954

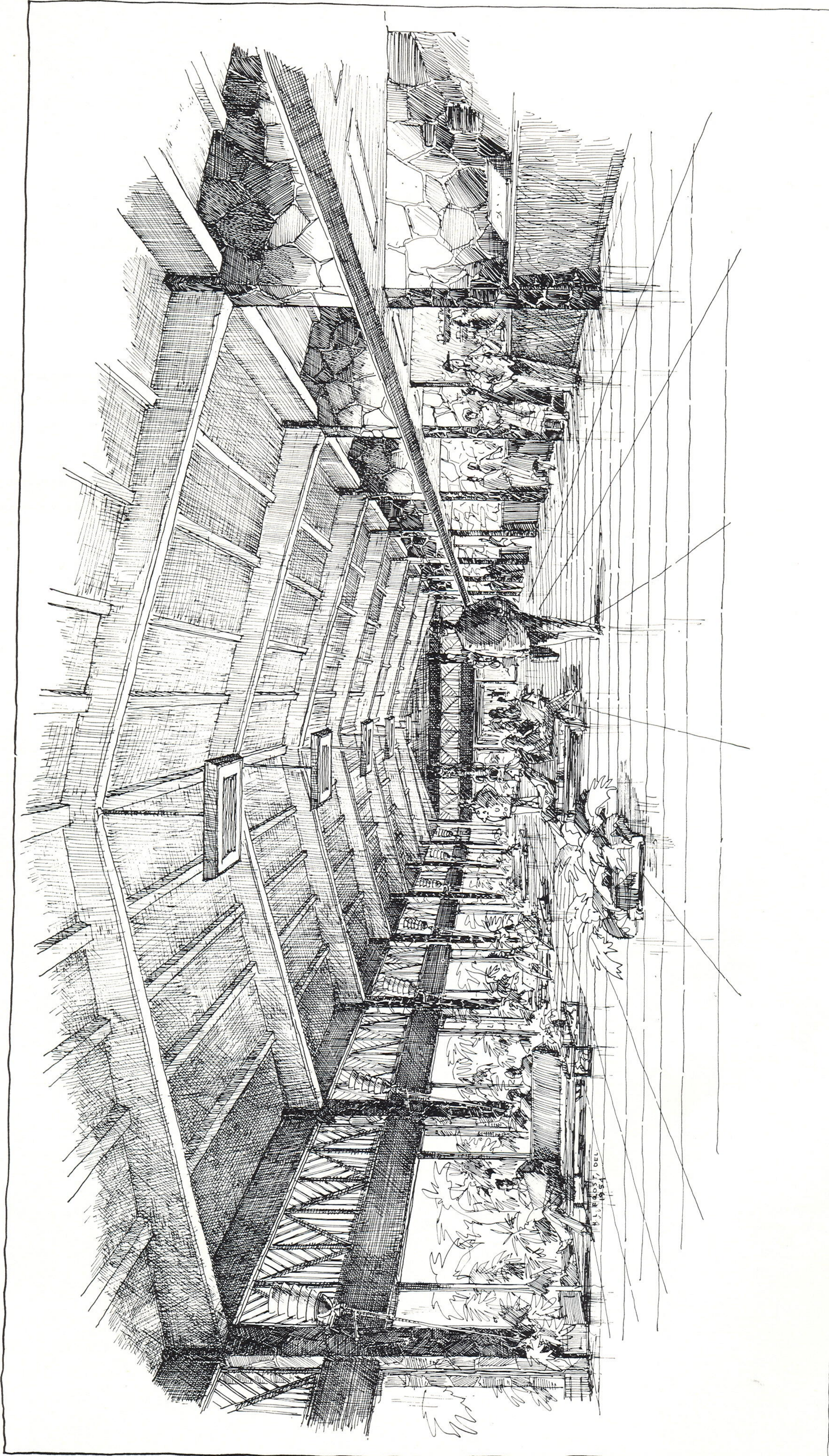
- Jan.
- Commission appropriates \$65,000 for construction of paved areas and service road to Freight Terminal and Small Plane Hangar Area at Hilo Airport.
  - Circuit Court Judge Calvin C. McGregor issues temporary order restraining Hawaii Aeronautics Commission from proceeding with construction of Kona Airport runway extension. Restraining order issued following injunction suits filed by Lorrin P. Thurston and David Twigg-Smith, Kona property owners. Both owners contend property damages would result should Commission proceed with its runway extension project.
  - Kalaupapa runway pavement project completed.
- Feb.
- Japan Air Lines, new international air carrier, inaugurates regular trans-Pacific flights between Tokyo and San Francisco via Honolulu with DC-6B planes.
  - Pan American World Airways establishes new Tokyo-Hawaii flight time of 9 hours and 18 minutes with Stratoclipper in "jet stream" across Pacific.
  - Installation of high intensity lighting system for runway 8-26 and a standby power generator at Hilo Airport, completed.
- Mar.
- Preliminary plans for new administration and terminal buildings for Honolulu International Airport receive Commission approval. The new improvements, to replace existing over-taxed facilities, are estimated to cost \$4,500,000. Plans include new overseas terminal, new inter-island terminal, a foreign arrivals unit, restaurant area plus fencing, ramps, roadways and auto parking areas.
  - Commission grants approval for participation at Civil Aeronautics Board hearing concerning application of Trans-Pacific Airlines for recertification as scheduled inter-island air carrier.

- Philippine Air Lines suspends operations between Manila and San Francisco via Honolulu.
  - Military terminates Korean airlift. Sharp decline in revenue from landing fees and fuel tax collections.
- Apr.
- Japan Air Lines inaugurates tourist fare accommodations between Tokyo and San Francisco via Honolulu.
  - Sum of \$22,000 appropriated for rehabilitation of runway and taxiway at Molokai Airport. Contract awarded for extension of Hawaiian Airlines terminal facilities at Honolulu Airport.
- May
- Qantas Empire Airways, Australian airline, establishes air service between Australia and Canada via Hawaii, replacing service formerly provided by BCPA.
  - Robert B. Murray, Jr., Under Secretary of Commerce for Transportation, arrives for seven-day visit in Hawaii. Mr. Murray visits territorial airports and discusses airport problems with HAC officials.
  - United Air Lines' newest passenger aircraft, the DC-7, arrives from New York via San Francisco in pre-certification flight.
  - Commission goes on record supporting recertification of Northwest Orient Airlines' Pacific-Northwest route to Hawaii.
- June
- Airport zoning regulations, developed to prevent creation of airport hazards, take effect.
  - Expansion work on passenger lobby and ticket counter facilities at Hawaiian Airlines terminal, Honolulu Airport, completed.
  - New \$120,000 freight terminal building at Hilo Airport completed.



**Arrival of Special Flight from Honolulu for the dedication of new Passenger Terminal Building, General Lyman Field, Hilo.**

**Dignitaries are greeted in Hawaiian tradition with showers of orchid blossoms and leis as they pass under the colorful vanda arch.**

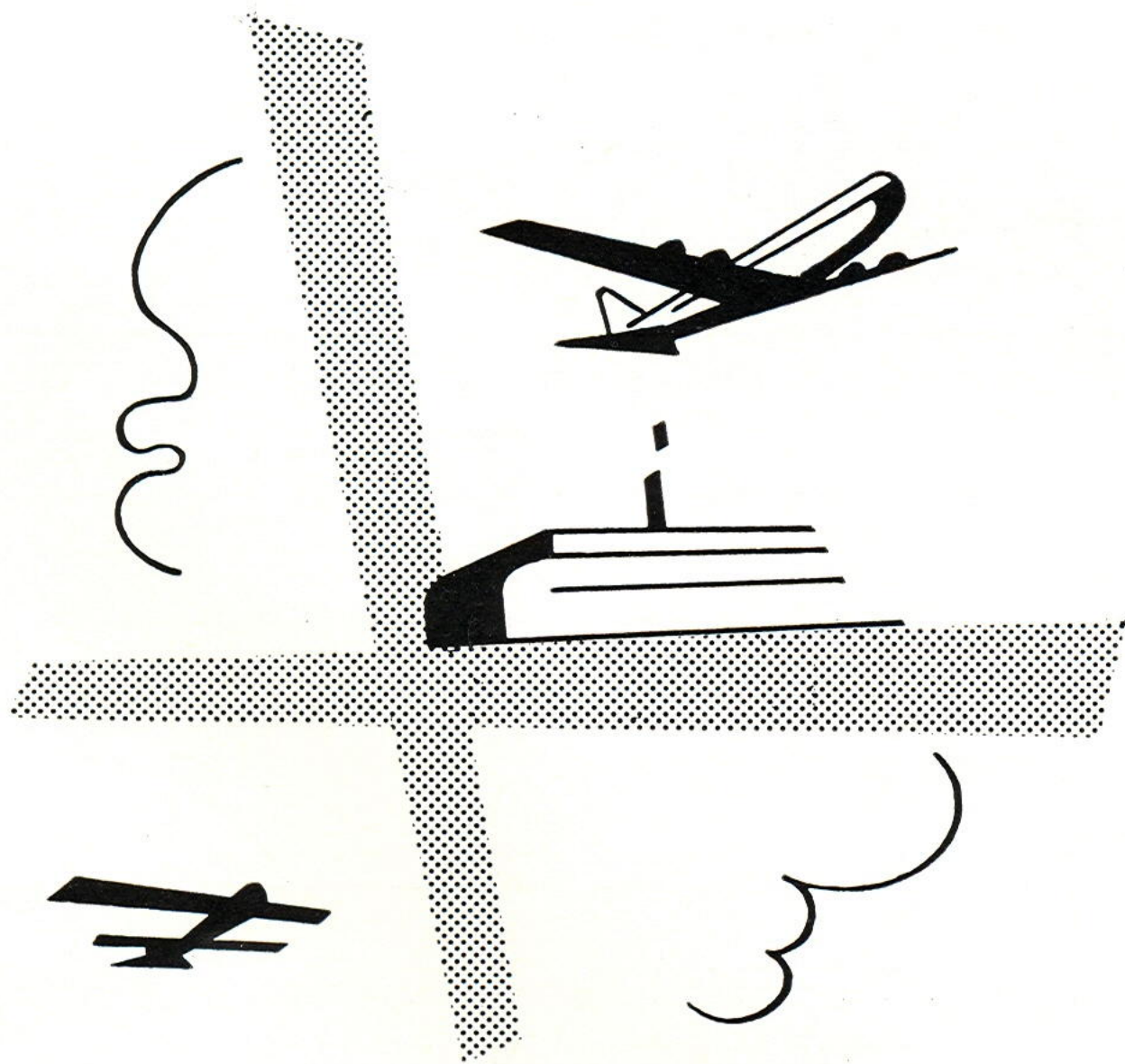


THEODORE A. VIERRA, Architect

Architectural rendering of the waiting lobby of the proposed new passenger terminal building for Honolulu Airport.



# PROGRESS STORY



**.... progress through the years.**

1925 — \$65,000 in government and private funds raised for building an airport on Oahu near Honolulu.

1927 — Honolulu Airport completed and named in honor of Cmdr. John Rodgers who made first attempted trans-Pacific flight in Navy seaplane.

Territorial Aeronautical Commission created.

1928 — Hilo Airport dedicated.

1929 — Inter-Island Airways starts first commercial air service in the Hawaiian Islands with Sikorsky amphibians.

1935 — Pan American Airways begins first commercial flight across Pacific Ocean, from San Francisco to Honolulu, Midway, Wake, Guam and Manila.

1938 — Maui Airport opened and replaces Maalaea Airfield as the major airport on the Island of Maui.

1939 — \$9,000,000 federal grant for design and construction of Keehi Lagoon seadrome and other territorial airports.



**Aerial view of John Rodgers Airport (now Honolulu International Airport) as it looked in 1937. At that time, there were only a few buildings, a lone runway and no seadrome.**

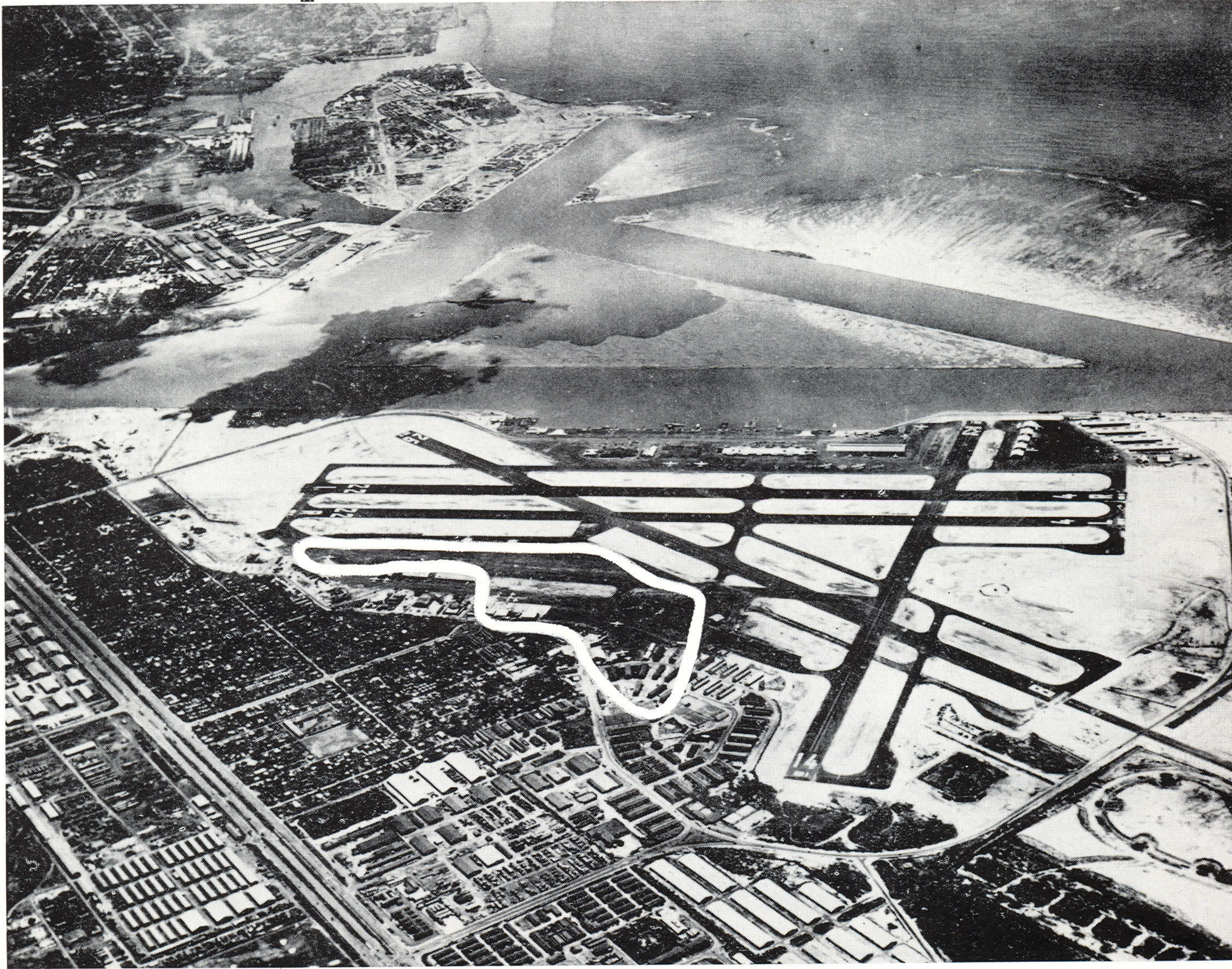
1940 — Special appropriation of \$3,300,000 authorized by U. S. Congress for dredging of Keehi Lagoon.

1941 — Additional \$1,900,000 authorized for development of John Rodgers airport in conjunction with Keehi Lagoon seaplane project. Hawaiian Airlines (formerly Inter-Island Airways) changes over from amphibians to DC-3 landplanes. Outbreak of World War II on December 7. Military authorities take over and begin intensive development of territorial airports.

1943 — John Rodgers Airport enlarged with fill from Keehi Lagoon dredging. Three runways completed. Hilo Airport name changed to General Lyman Field by legislative act.

1946 — John Rodgers Airport returned to Territory following end of World War II.

1947 — Hawaii Aeronautics Commission created by legislative act for operation and maintenance of all territorial airports. United Air Lines begins regular trans-Pacific service between San Francisco and Honolulu.



This is the Honolulu International Airport as it looks today from the air. White outline shows the approximate area of the airport in 1937 as shown on page 9. In the background may be seen Keahi Lagoon which was dredged to form the three seaplane runways. This airport today is one of the largest in the nation and comprises a total area of 4,019.476 acres, including the seadrome.

1948 — Lanai Airport completed and opened as first airport to be constructed with Territorial funds and matching federal air funds. Northwest Airlines begins scheduled operations between Portland-Seattle and Honolulu.

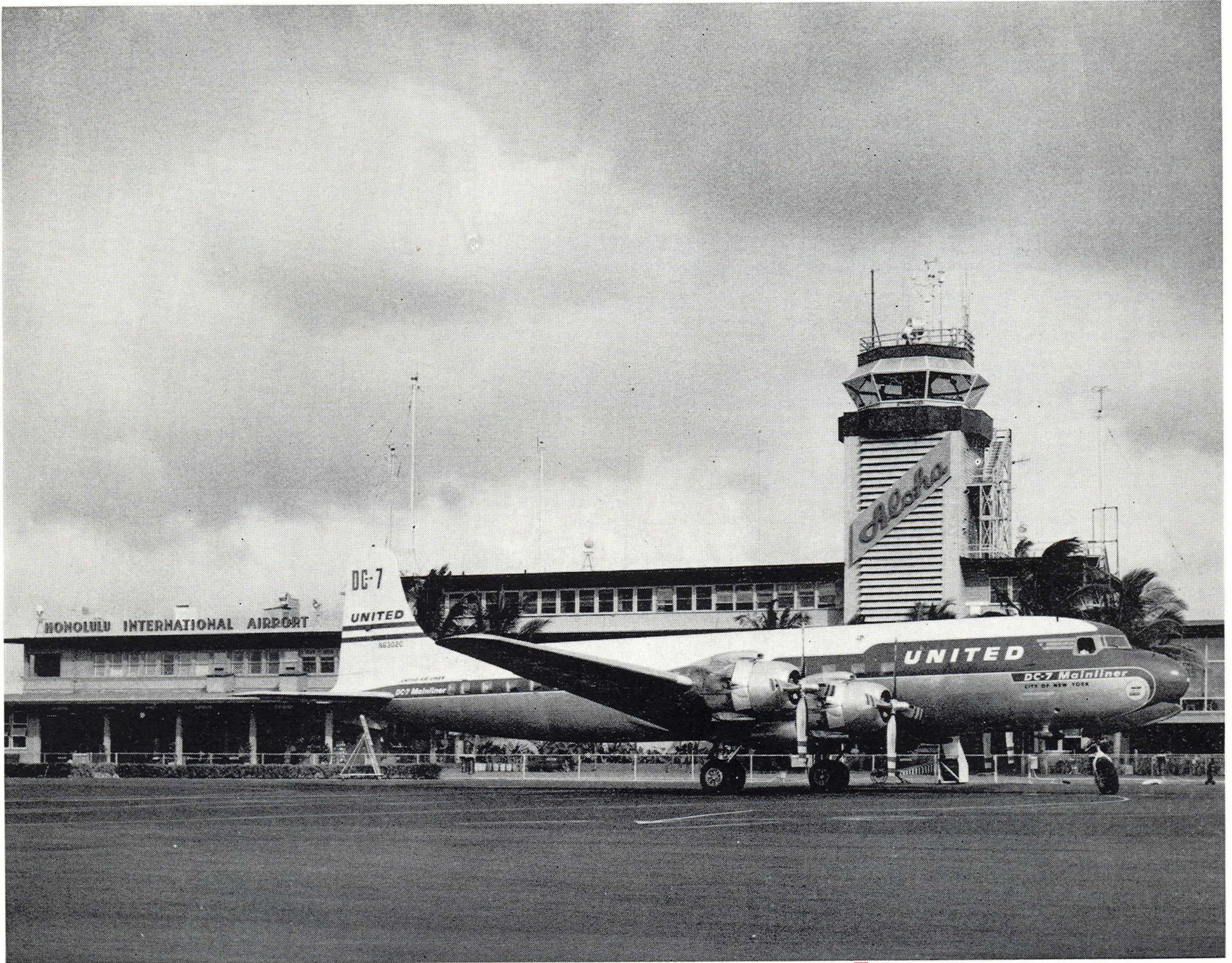
1949 — British Commonwealth Pacific Airlines and Canadian Pacific Airlines begin service between Australia and Canada by way of Hawaii. Trans-Pacific Airlines begins regular inter-island passenger and freight service. Kona Airport opened.

1950 — Lihue and Hana Airports opened.

1951 — Honolulu Airport name changed by legislative act to Honolulu International Airport. Runway 8 lengthened to 13,104 feet, making it the longest commercial airport runway.

1952 — Kahului Airport, constructed by U. S. Navy, becomes principal airport on Maui. All operations transferred to Kahului from Maui Airport.

1953 — Hawaiian Airlines begins Convair 340 flights for inter-island passenger service.



The newest and fastest passenger aircraft serving Hawaii—the DC-7—arrives on its inaugural “dawn-to-dusk” flight from New York via San Francisco on May 24, 1954.

# Trends

Per cent increase

1954

1953

1952

1951

1950

1949

1948



## AIR CARRIER LANDINGS

50,769

59,736

57,942

50,657

45,521

40,101

43,525

16.6



## PASSENGERS

776,103

737,156

672,965

573,613

535,120

505,398

497,536

56.0



## AIR MAIL

4,853,907

4,100,327

3,717,195

3,970,300

4,429,129

4,045,633

2,623,515

85.0



## AIR CARGO

26,945,973

28,115,717

28,661,311

28,731,146

24,000,014

25,118,935

26,797,934

0.6

## AIR CARRIER LANDINGS

## AIR MAIL

## AIR CARGO

## PASSENGERS

POSTWAR PERIOD	PASSENGERS		AIR CARGO			AIR MAIL			AIR CARRIER LANDINGS			
	Inter-Island	Over-seas	Total	Inter-Island (Pounds)	Overseas (Pounds)	Total (Pounds)	Inter-Island (Pounds)	Overseas (Pounds)	Total (Pounds)	Inter-Island	Over-seas	Total
7/1/47-6/30/48	392,038	105,498	497,536	23,468,706	3,329,228	26,797,934	513,048	2,110,467	2,623,515	40,175	3,350	43,525
7/1/48-6/30/49	385,190	120,208	505,398	20,769,833	4,349,102	25,118,935	662,707	3,382,926	4,045,633	36,478	3,623	40,101
7/1/49-6/30/50	420,182	114,938	535,120	19,532,290	4,467,724	24,000,014	863,444	3,565,685	4,429,129	42,583	2,938	45,521
7/1/50-6/30/51	448,374	125,239	573,613	24,421,460	4,309,686	28,731,146	709,215	3,261,085	3,970,300	43,203	7,454	50,657
7/1/51-6/30/52	519,367	153,598	672,965	24,923,811	3,737,500	28,661,311	681,969	3,035,226	3,717,195	50,175	7,767	57,942
7/1/52-6/30/53	554,561	182,595	737,156	24,526,295	3,589,422	28,115,717	718,964	3,381,363	4,100,327	51,615	8,121	59,736
7/1/53-6/30/54	570,263	205,840	776,103	23,261,642	3,684,331	26,945,973	736,075	4,117,832	4,853,907	45,058	5,711	50,769

Increase or Decrease

7/1/47-6/30/48

to

7/1/53-6/30/54

Per cent

Increase or

Decrease

45.5

95.1

56.0

-0.9

10.7

0.6

43.5

95.1

85.0

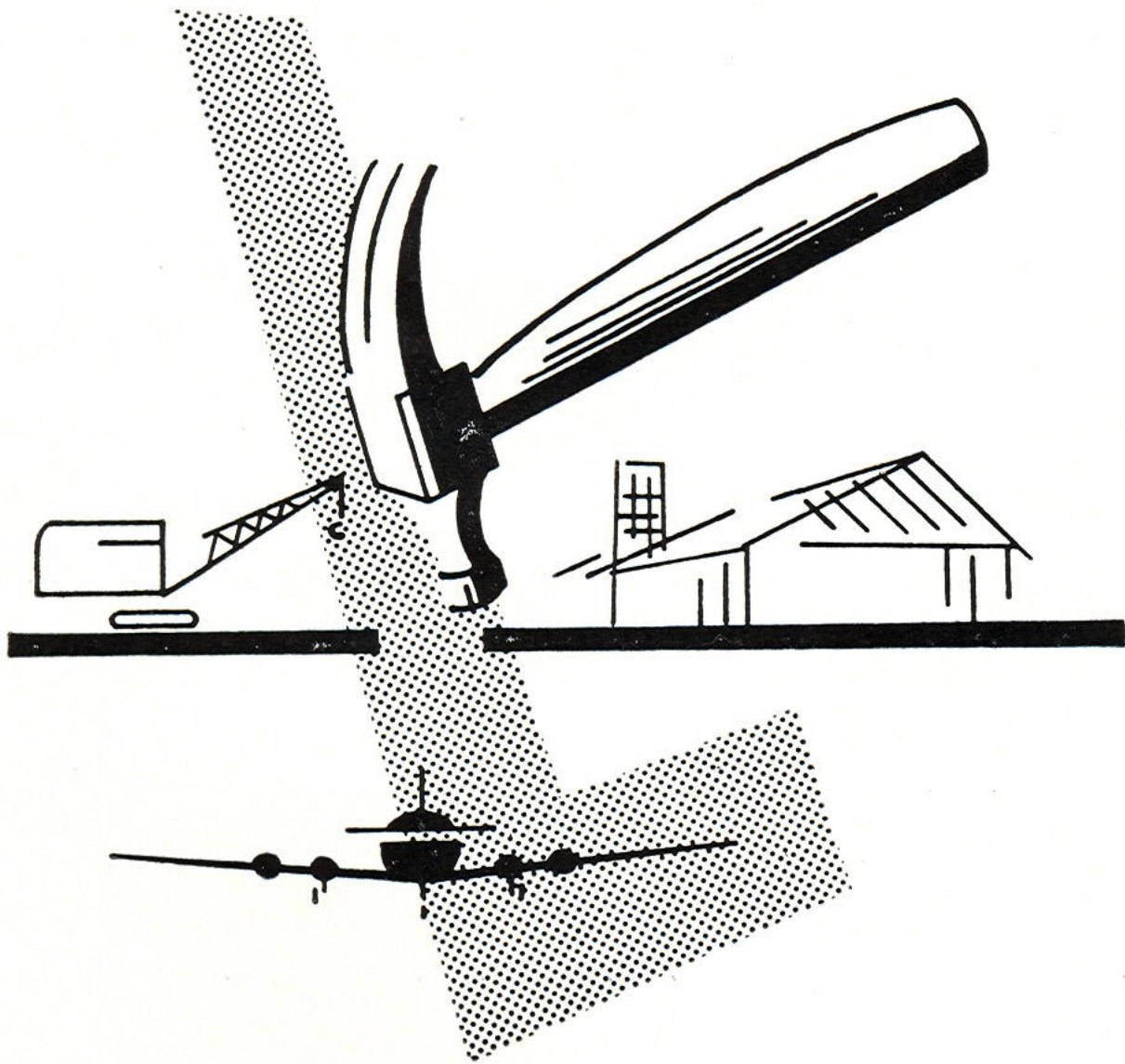
12.2

70.5

16.6



# CONSTRUCTION STORY





Street entrance of Overseas Terminal at Honolulu International Airport.

# Honolulu International Airport

LAND AREA:	4,020 acres
RUNWAYS:	
4R-22L	200' x 7,004'
4L-22R	200' x 6,950'
14-32	200' x 6,150'
8-26	200' x 13,104'
AIRCRAFT OPERATIONS:	255,385
PASSENGER TRAFFIC:	720,033
AIR CARGO:	25,380,281 lbs.
AIR MAIL:	4,851,650 lbs.

## THE CONSTRUCTION STORY

### Initial Land Acquisition

### Territorial Land

#### Completed Projects

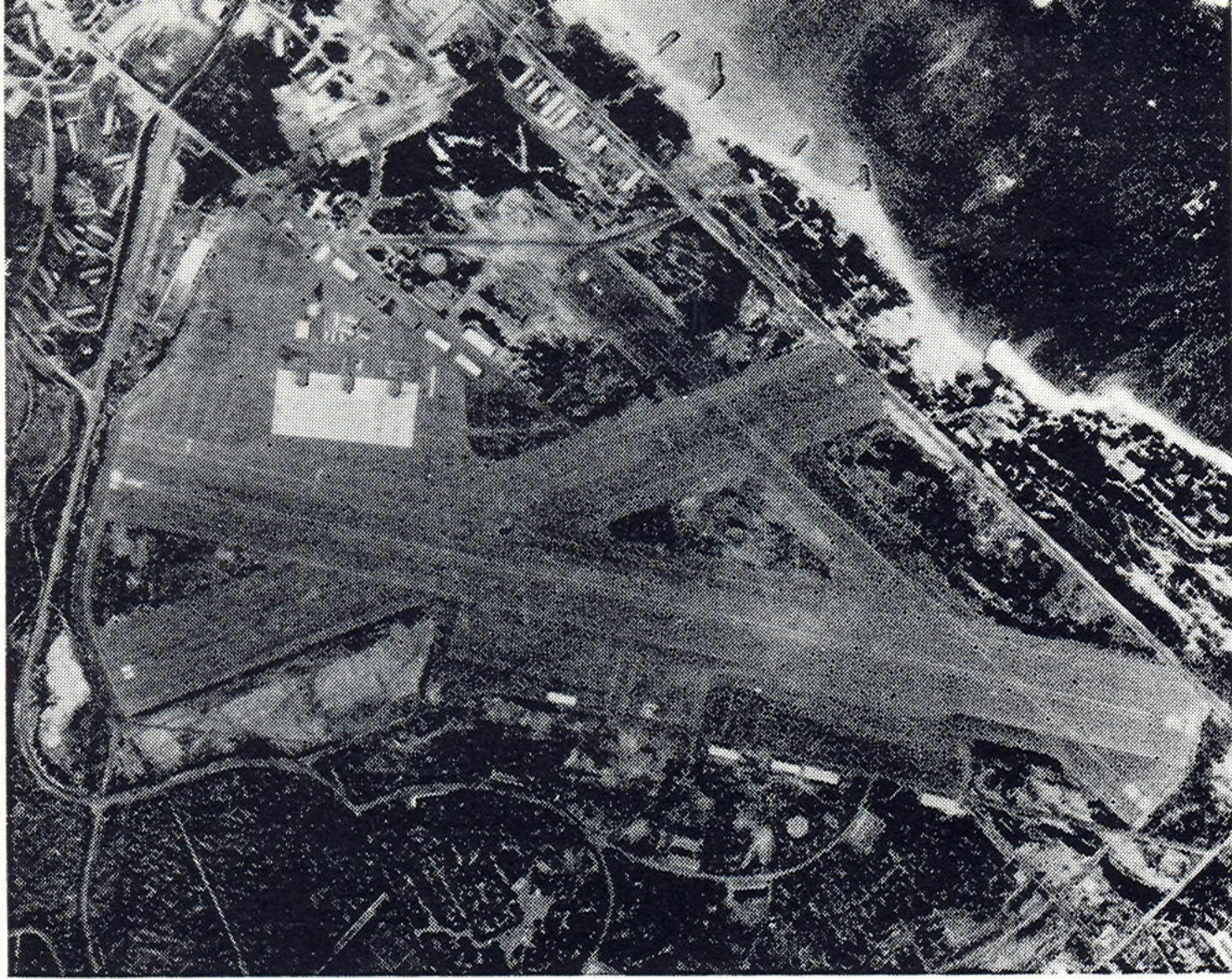
Acquisition of Additional Land	\$ 69,660
Acquisition and Improvements to Hangars	124,356
Auxiliary Power System	15,144
Fencing and Drainage	33,137
Improvements to Overseas Terminal Building	111,812
High Intensity Lighting System, Runway 8-26	151,799
Lei Vending Stands	31,710
Extension of Runway 8-26 to H.A.F.B.	95,097
Rehabilitation of Runways	135,181
Medium Intensity Lighting, Runway 4L-22R	149,553
Miscellaneous Improvements	131,737
Expansion of Hawaiian Airlines Terminal	12,000

#### Projects under Construction

Landscaping of Airport Roads	19,000
------------------------------	--------

#### Projects in the Planning Stage

New Terminal Buildings	4,800,000
Private Plane Hangars	60,000
Maintenance Buildings and Base Yard	105,000
Aircraft Maintenance Hangars	315,000
In-Flight Kitchen Building	75,000



Aerial photo of Kahului Airport.

# Kahului Airport

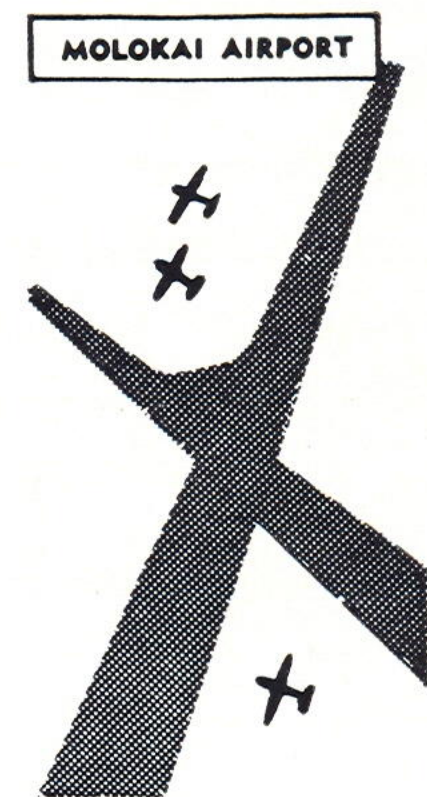
LAND AREA:	1,341 acres
RUNWAYS:	
2-20	200' x 7,000'
5-23	300' x 5,000'
17-35	200' x 5,000'
AIRCRAFT OPERATIONS:	29,909
PASSENGER TRAFFIC:	183,511
AIR CARGO:	6,505,995 lbs.
AIR MAIL:	148,311 lbs.

## THE CONSTRUCTION STORY

Initial Land Acquisition	U. S. Navy
Completed Projects	
Passenger Terminal Building and Facilities	\$ 93,421
Freight Terminal Building and Facilities	19,075
Temporary Control Tower	12,100
Private Plane Hangars	7,050
Miscellaneous Projects	25,930
Projects in the Planning Stage	
Medium Intensity Runway Lighting System	105,000
Permanent Control Tower	110,000

# Molokai Airport

LAND AREA:	288 acres
RUNWAYS:	
5-23	200' x 4,500'
17-35	200' x 3,100'
PASSENGER TRAFFIC:	48,069
AIR CARGO:	1,189,288 lbs.
AIR MAIL:	23,893 lbs.

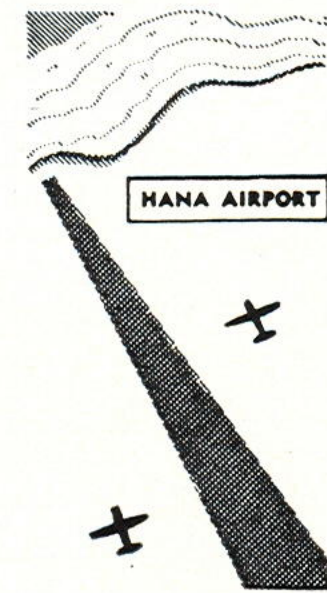


## THE CONSTRUCTION STORY

Initial Land Acquisition	Territorial Land
Projects Completed	
Drainage System	\$29,460
Miscellaneous Projects	5,021
Projects under Construction	
Resurfacing of Runway 5-23 and Taxiway and Parking Aprons	22,000
Projects in the Planning Stage	
Medium Intensity Lighting System Runway 5-23	88,000
Passenger Terminal Building	80,000

# Hana Airport

LAND AREA:	125 acres
RUNWAY:	8-26 100' x 3,600'
PASSENGER TRAFFIC:	8,141
AIR CARGO:	180,628 lbs.
AIR MAIL:	5,232 lbs.



## THE CONSTRUCTION STORY

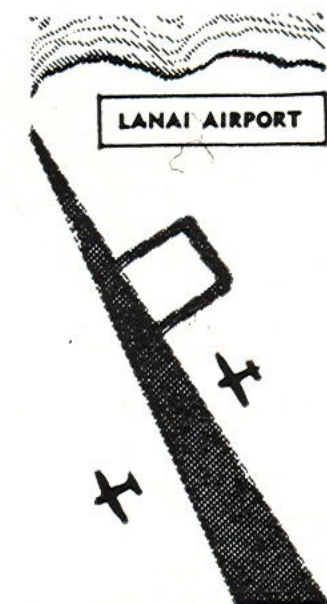
### Initial Land Acquisition Projects Completed

Construction of New Airstrip	\$242,718
Paving of Runways and Aprons	176,442
Passenger Terminal and Freight Buildings	21,730

### Territorial Lands and Private Donation

# Lanai Airport

LAND AREA:	59 acres
RUNWAY:	3-21 80' x 3,700'
PASSENGER TRAFFIC:	16,930
AIR CARGO:	1,474,302 lbs.
AIR MAIL:	11,328 lbs.



## THE CONSTRUCTION STORY

### Initial Land Acquisition Projects Completed

Initial Construction of Airstrip by Department of Public Works in 1946	\$ 48,556
Paving of Runway and Construction of Taxiway and Apron	271,950
Construction of Run-up Strip	28,419
Freight Terminal Building	15,000

### Private Donation

# Kalaupapa Airport

LAND AREA:	17 acres
RUNWAY:	5-23 100' x 2,650'
PASSENGER TRAFFIC:	2,342
AIR CARGO:	455,562 lbs.
AIR MAIL:	37,094 lbs.

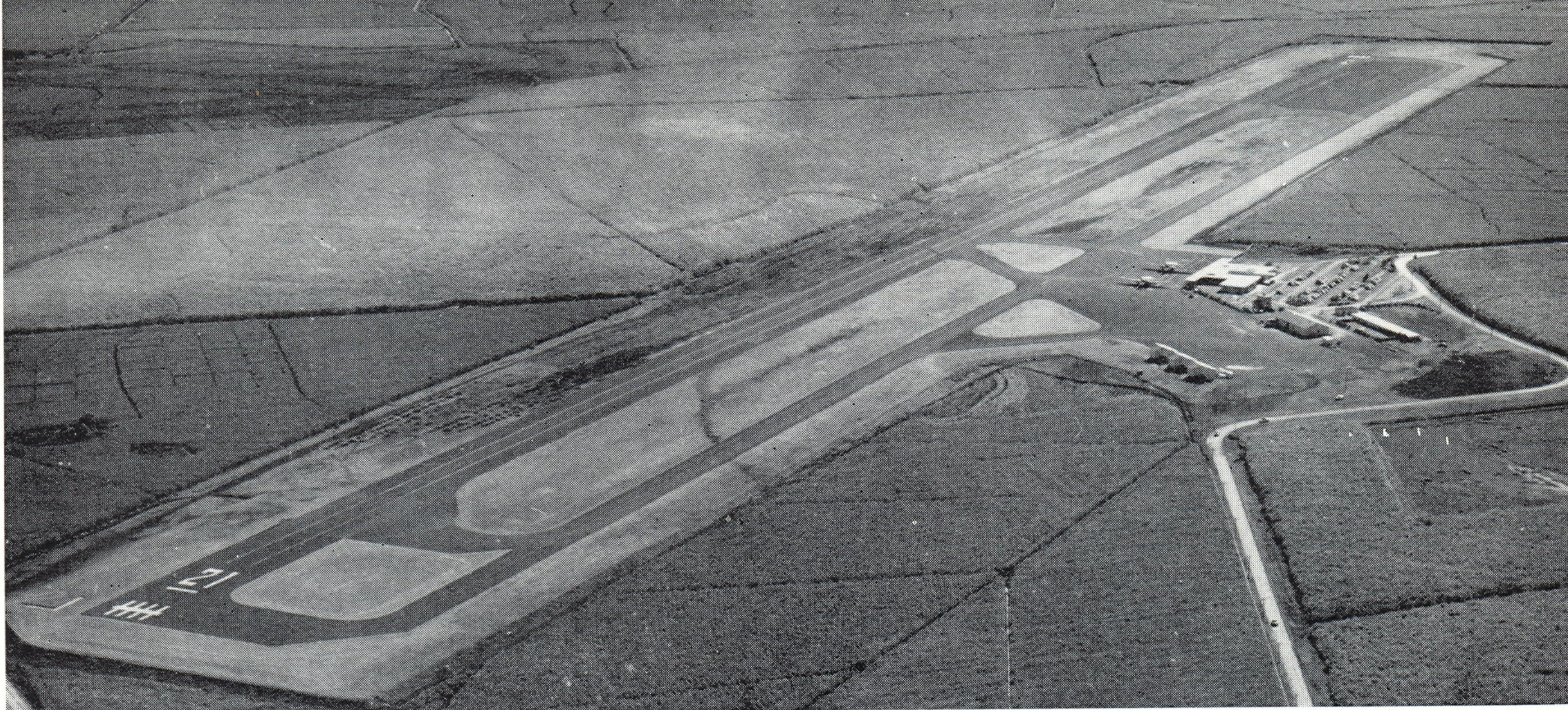


## THE CONSTRUCTION STORY

### Initial Land Acquisition Completed Projects

Construction of runway, paved areas	\$65,162
Passenger Terminal Building	4,772

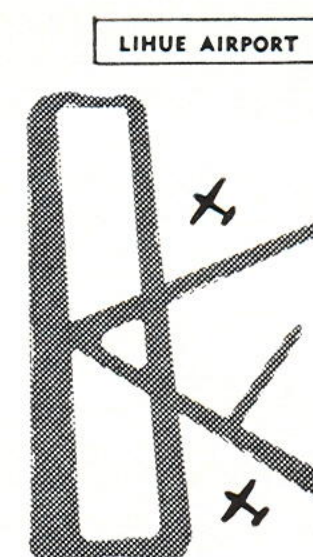
### Territorial Land



Aerial photo of Lihue Airport.

## Lihue Airport

LAND AREA:	160 acres
RUNWAY:	3-21 100' x 5,100'
AIRCRAFT OPERATIONS:	12,902
PASSENGER TRAFFIC:	150,824
AIR CARGO:	3,484,515 lbs.
AIR MAIL:	112,629 lbs.

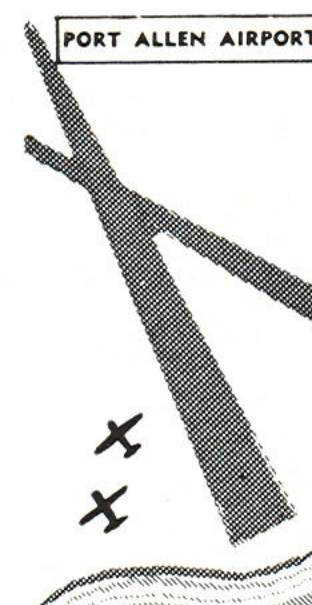


### THE CONSTRUCTION STORY

Initial Land Acquisition Cost	\$100,017
Additional Land Purchased	6,382
Completed Projects	
Construction of Airstrip and Paved Runway	426,233
Additional Taxiways and Parking Aprons	252,621
Extension of Runway to 5,100 ft.	178,697
Water System	55,564
Medium Intensity Runway Lighting System	68,059
Passenger Terminal Building	97,223
Alteration and Extension to Passenger Terminal	110,122
Freight Terminal Building	23,662
T-Hangars	15,767
Miscellaneous	6,500
Projects under Construction	
Alteration to Entrance Roadways	7,500

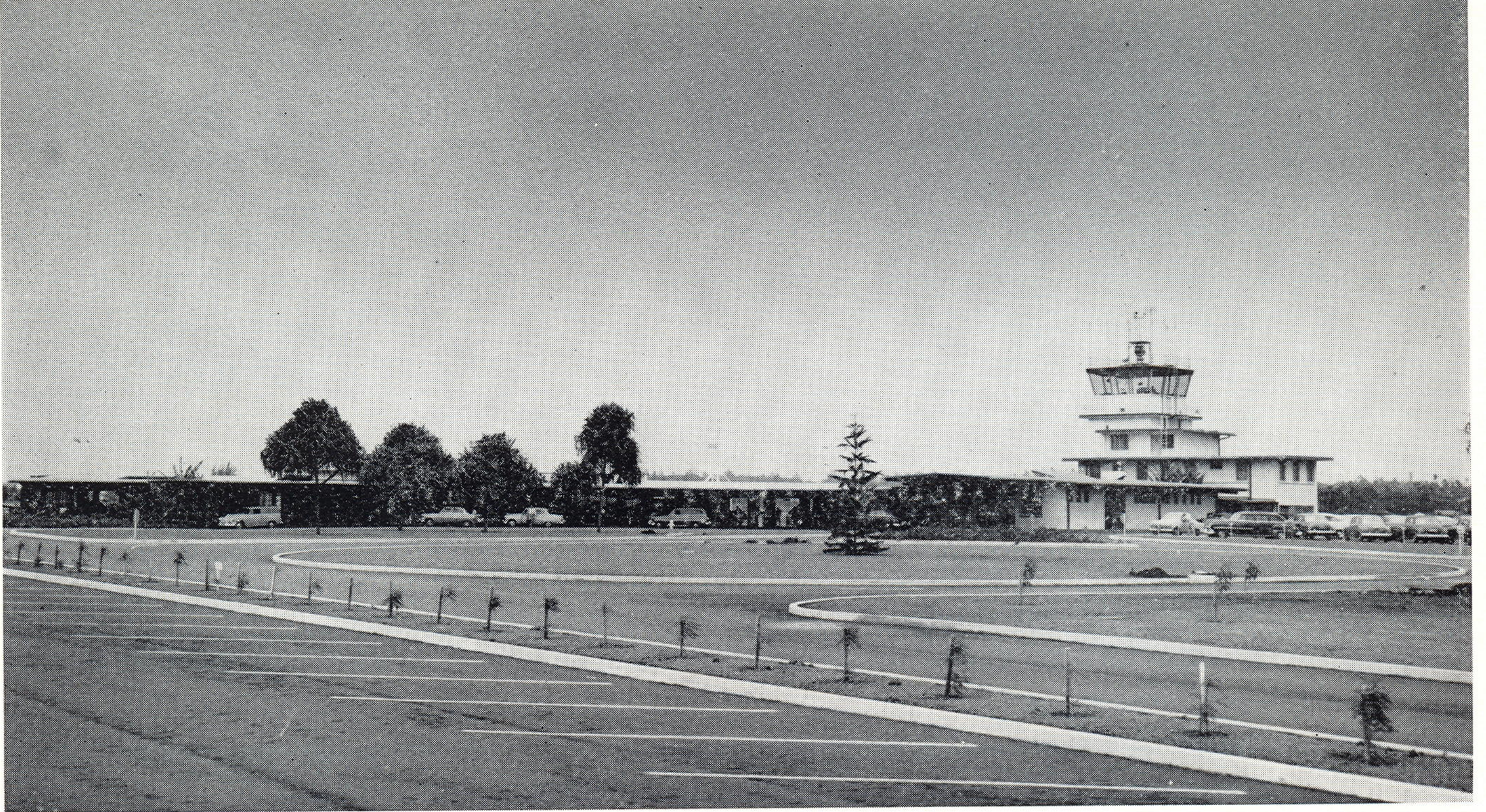
## Port Allen Airport

LAND AREA:	175 acres
RUNWAYS:	
9-27	60' x 2,500'
5-23	100' x 2,600'
PASSENGER TRAFFIC:	568
AIR CARGO:	327,642 lbs.
AIR MAIL:	None



### THE CONSTRUCTION STORY

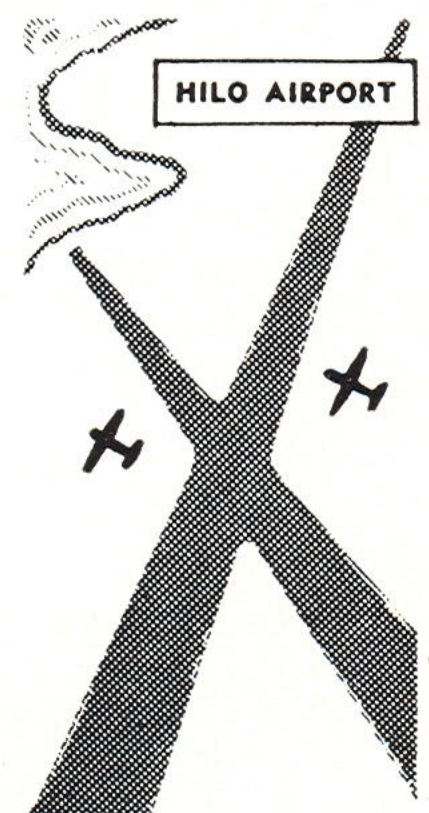
Initial Land Acquisition	Territorial Land
Completed Projects	
Rehabilitation of Runways	\$33,457



Street entrance of new passenger terminal building at General Lyman Field.

## General Lyman Field

LAND AREA: . . . . .	650 acres
RUNWAYS:	
3-21 . . . . .	200' x 6,000'
8-26 . . . . .	200' x 6,500'
AIRCRAFT OPERATIONS: . . . . .	40,022
PASSENGER TRAFFIC: . . . . .	153,831
AIR CARGO: . . . . .	7,631,438 lbs.
AIR MAIL: . . . . .	363,959 lbs.

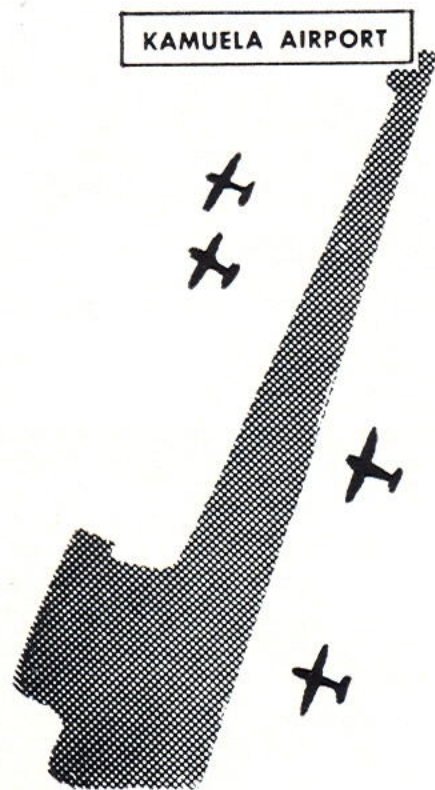


### THE CONSTRUCTION STORY

Initial Land Acquisition	Territorial Land
<b>Completed Projects</b>	
Rehabilitation of Roads and Runways . . . . .	\$ 30,500
Protective Fencing . . . . .	26,282
New Terminal and Administration Building . . . . .	381,008
Parking Aprons, Access Roads, Ramps and Auto Park . . . . .	281,129
High Intensity Lighting System, Runway 8-26 . . . . .	176,637
Freight Terminal Building . . . . .	109,396
"Private" Plane Hangars . . . . .	20,119
Miscellaneous Projects . . . . .	75,564
<b>Projects in the Planning Stage</b>	
Medium Intensity Lighting System, Runway 3-21 . . . . .	123,000
Reconstruction of Pavement Runway 3-21 and Field Drainage System . . . . .	148,000



New air cargo terminal building at General Lyman Field.



## *Kamuela Airport*

LAND AREA:	. . . . .	90 acres
RUNWAY:	. . 4-22 . . . . .	100' x 5,200'
PASSENGER TRAFFIC:	. . . . .	6,891
AIR CARGO:	. . . . .	1,715,769 lbs.
AIR MAIL:	. . . . .	5,253 lbs.

### THE CONSTRUCTION STORY

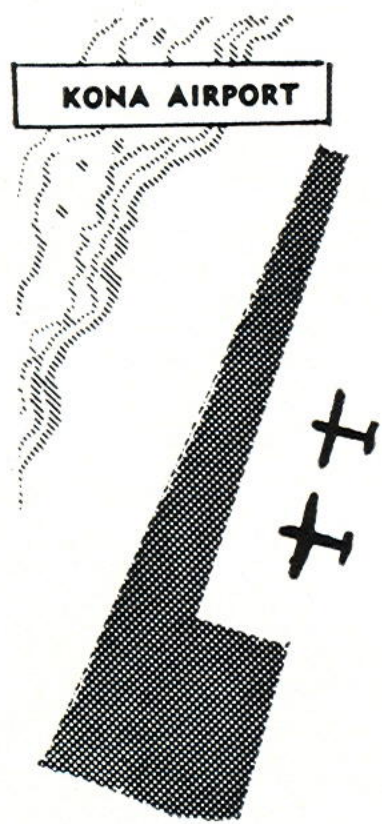
Initial Land Acquisition . . . . . \$ 7,000

#### Completed Projects

Construction of New Airstrip and Runway . . . . .	864,441
Passenger and Freight Terminal Building . . . . .	79,749
Miscellaneous Projects . . . . .	3,459

#### Projects in the Planning Stage

Refrigeration Facilities, Terminal Building . . . . .	20,000
Medium Intensity Lighting, Runway 4-22 . . . . .	93,000



# Kona Airport

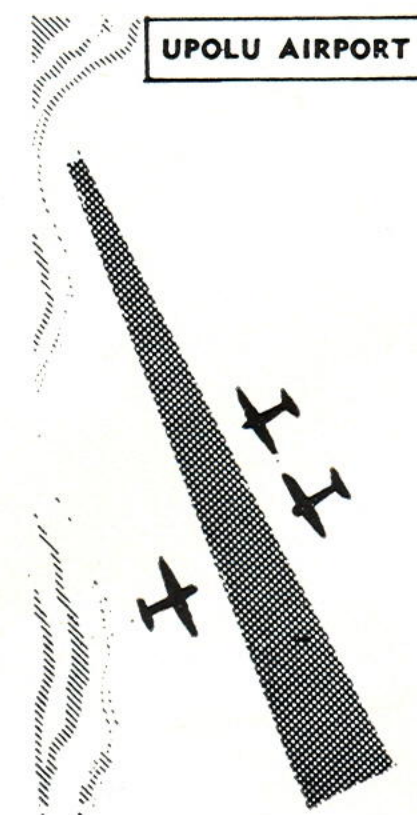
LAND AREA:	120 acres
RUNWAY:	11-29 100' x 3,800'
PASSENGER TRAFFIC:	46,570
AIR CARGO:	1,278,449 lbs.
AIR MAIL:	22,010 lbs.

## THE CONSTRUCTION STORY

Initial Land Acquisition	\$ 11,860
Acquisition of Additional Land	8,601
<b>Completed Projects</b>	
Construction of New Airstrip and Runway	309,150
Additional Taxiways, Parking Aprons and Other Paved Areas	166,411
Water System	12,000
Passenger Terminal Building	32,694
Freight Terminal Building	20,137
"Private" Plane Hangars	26,243
<b>Projects under Construction (Plans Completed)</b>	
Extension of Runway to 5,100 ft.	310,000
<b>Projects in the Planning Stage</b>	
Medium Intensity Lighting System, Runway 11-29	111,000

# Upolu Airport

LAND AREA:	95 acres
RUNWAY:	7-25 150' x 4,000'
PASSENGER TRAFFIC:	8,656
AIR CARGO:	583,746 lbs.
AIR MAIL:	8,623 lbs.

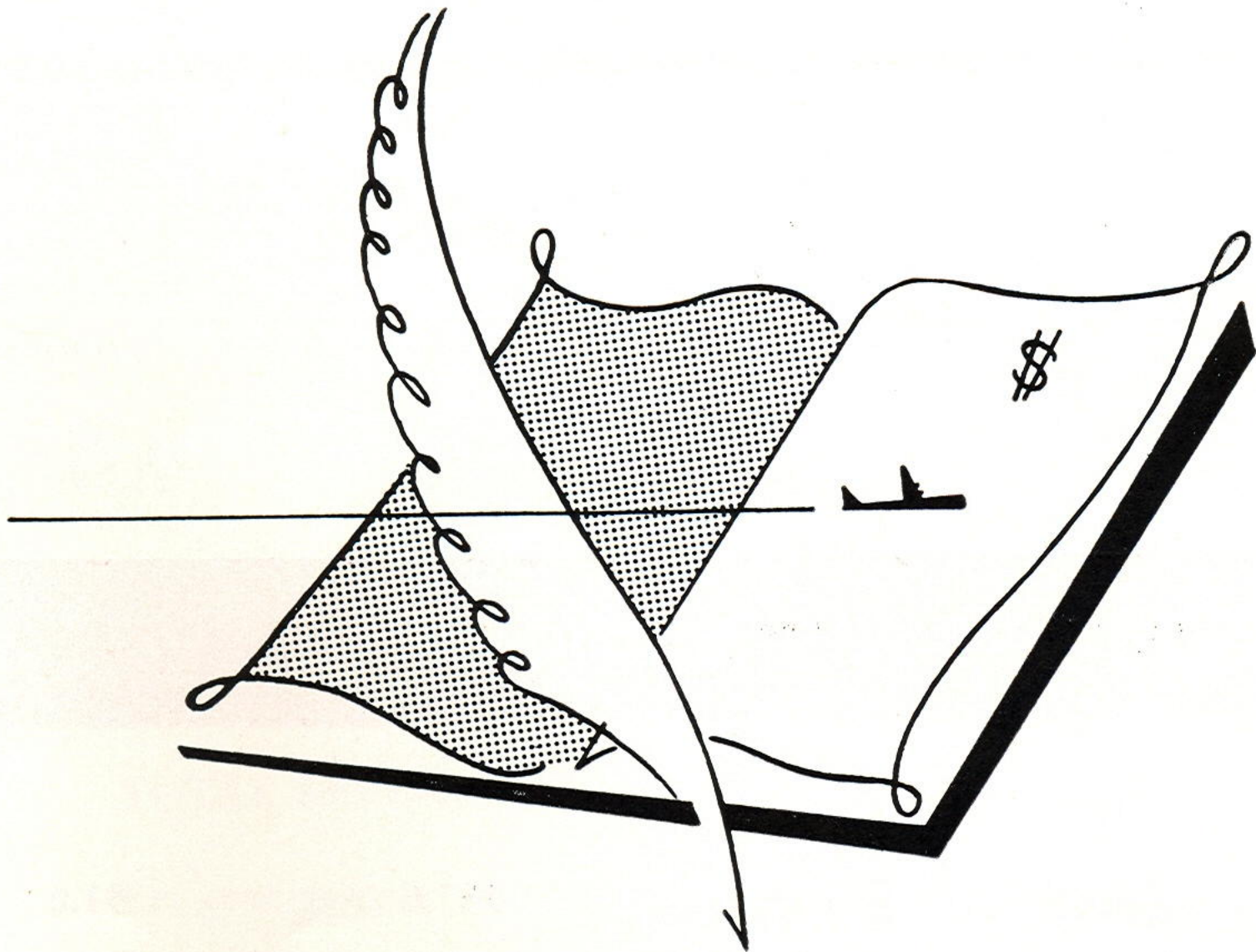


## THE CONSTRUCTION STORY

Initial Land Acquisition	Territorial Land
<b>Completed Projects</b>	
Passenger Terminal	\$27,433
Repaving and Resurfacing of Runway and Apron	54,581



# FINANCIAL STORY





## HONOLULU INTERNATIONAL AIRPORT MONTHLY LANDING TOTALS

Fiscal Year July 1, 1953 to June 30, 1954

		Scheduled Carriers	Non- Scheduled Carriers	Civilian Aircraft	Military Aircraft	Totals
1953	July . . . .	1,849	1,167	2,435	2,312	7,763
	August . . . .	1,884	999	2,113	2,108	7,104
	September . . .	1,598	1,082	1,418	2,376	6,474
	October . . . .	1,524	1,101	1,343	5,775	9,743
	November . . .	1,422	1,088	1,374	6,312	10,196
	December . . .	1,588	1,103	1,527	9,051	13,269
1954	January . . . .	1,438	1,431	1,375	7,151	11,395
	February . . . .	1,246	1,256	1,581	8,400	12,483
	March . . . . .	1,388	1,204	1,304	8,637	12,533
	April . . . . .	1,524	1,070	1,174	8,902	12,670
	May . . . . .	1,580	1,156	1,059	8,675	12,470
	June . . . . .	1,798	947	1,197	7,648	11,590
	<b>TOTALS . . . .</b>	<b>18,839</b>	<b>13,604</b>	<b>17,900</b>	<b>77,347</b>	<b>127,690</b>
	Per cent gain or loss from preceding fiscal year . . . . .	-13.8	-6.6	-46.9	187.6	31.6

## HONOLULU INTERNATIONAL AIRPORT

### REVENUE PASSENGER, CARGO AND AIR MAIL SUMMARY

Fiscal Year July 1, 1953 to June 30, 1954

#### PASSENGERS

	Outgoing	Incoming	Through
<b>Inter-Island</b> . . . . .	255,862	258,331	—
<b>Overseas</b> . . . . .	87,138	82,263	36,439
<b>TOTAL REVENUE PASSENGERS</b> . . . . .	343,000	340,594	36,439
Per cent gain or loss from preceding fiscal year . . . . .	5.9	4.4	5.6

#### CARGO

	Outgoing Pounds	Incoming Pounds	Through Pounds
<b>Inter-Island</b> . . . . .	13,009,569	8,686,381	—
<b>Overseas</b> . . . . .	808,470	907,954	1,967,907
<b>TOTAL REVENUE CARGO</b> . . . . .	13,818,039	9,594,335	1,967,907
Per cent gain or loss from preceding fiscal year . . . . .	3.7	—15.7	7.3

#### AIR MAIL

	Outgoing Pounds	Incoming Pounds	Through Pounds
<b>Inter-Island</b> . . . . .	339,626	394,192	—
<b>Overseas</b> . . . . .	1,242,593	1,189,927	1,685,312
<b>TOTAL REVENUE AIR MAIL</b> . . . . .	1,582,219	1,584,119	1,685,312
Per cent gain or loss from preceding fiscal year . . . . .	2.1	9.9	52.5

# INTER-ISLAND REVENUE PASSENGER SUMMARY

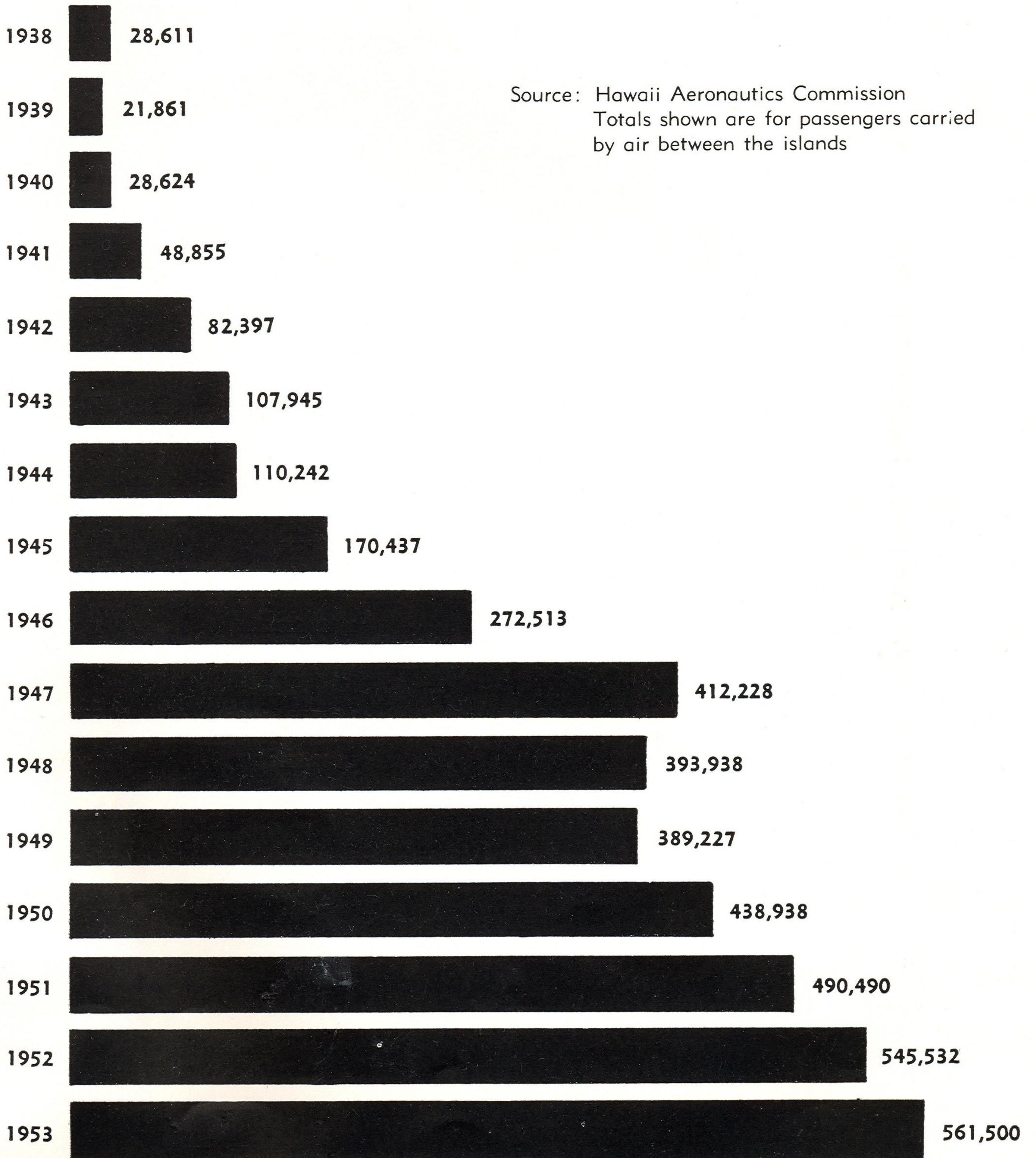
Fiscal Year July 1, 1953 to June 30, 1954

From:	To: Honolulu	Hilo	Upolu	Kamuela	Kona	Kahului	Hana	Molokai	Kalaupapa	Lanai	Lihue	Port Allen
HONOLULU . . . . .	255,862	63,105	3,894	3,366	15,707	68,605	3,272	17,177	979	5,213	74,259	285
HILO . . . . .	71,408	---	---	---	---	10,724	22	81	---	---	196	---
UPOLU . . . . .	4,525	---	---	---	9	381	---	16	---	---	---	---
KAMUELA . . . . .	3,414	---	---	---	---	351	---	28	---	23	---	---
KONA . . . . .	29,152	---	---	---	---	898	49	23	---	---	170	---
KAHULUI . . . . .	92,093	18,807	234	72	1,077	---	694	5,878	9	3,089	347	---
HANA . . . . .	4,050	3,226	---	4	50	626	---	52	---	---	---	---
MOLOKAI . . . . .	24,209	17,051	---	6	77	6,310	54	---	162	199	181	---
KALAUPAPA . . . . .	1,191	899	---	---	---	18	---	273	---	1	---	---
LANAI . . . . .	8,405	32	3	29	3	3,064	---	164	1	---	---	---
LIHUE . . . . .	75,671	74,349	---	---	495	441	---	168	---	---	---	---
PORT ALLEN . . . . .	283	---	---	---	---	---	---	---	---	---	---	---
<b>TOTALS . . . . .</b>	<b>570,263</b>	<b>258,331</b>	<b>4,131</b>	<b>3,477</b>	<b>17,418</b>	<b>91,418</b>	<b>4,091</b>	<b>23,860</b>	<b>1,151</b>	<b>8,525</b>	<b>75,153</b>	<b>285</b>

Total Inter-Island Revenue Passengers, July 1, 1953 to June 30, 1954—570,263

*Inter-Island Passenger Traffic*

**CALENDAR YEAR TOTALS**



Source: Hawaii Aeronautics Commission  
Totals shown are for passengers carried  
by air between the islands

TERRITORIAL AIRPORTS

**INTER-ISLAND REVENUE PASSENGER,  
CARGO AND AIR MAIL SUMMARY**

By Months

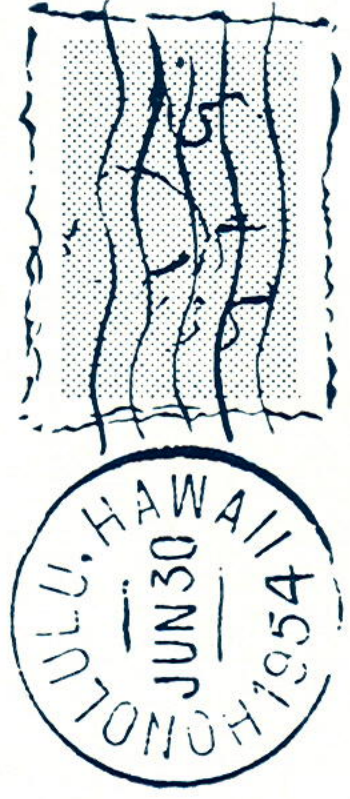
Fiscal Year July 1, 1953 to June 30, 1954

	PASSENGERS	CARGO Pounds	AIR MAIL Pounds
1953 July . . . . .	59,665	2,318,140	57,485
August . . . . .	70,237	2,069,241	51,536
September . . . . .	46,766	1,764,331	52,542
October . . . . .	43,250	1,890,416	56,022
November . . . . .	39,440	1,680,483	54,257
December . . . . .	46,669	2,111,571	111,327
1954 January . . . . .	42,174	1,587,994	50,874
February . . . . .	36,967	1,648,600	53,367
March . . . . .	37,434	1,849,750	57,846
April . . . . .	47,865	1,953,710	66,754
May . . . . .	43,131	1,944,611	67,596
June . . . . .	56,665	2,442,795	56,469
<b>TOTALS . . . . .</b>	<b>570,263</b>	<b>23,261,642</b>	<b>736,075</b>
Per cent gain or loss from preceding fiscal year . . . . .	2.8	—5.2	2.4

# INTER-ISLAND REVENUE AIR MAIL SUMMARY

Pounds Carried

Fiscal Year July 1, 1953 to June 30, 1954



	To:											
	Honolulu	Hilo	Upolu	Kamuela	Kona	Kahului	Hana	Molokai	Kalau-papa	Lanai	Lihue	
From:												
HONOLULU	339,626	-----	120,528	3,922	3,105	11,738	83,435	2,069	13,130	29,362	6,484	65,853
HILO . . .	242,873	-----	-----	-----	-----	778	-----	-----	-----	-----	-----	-----
UPOLU . . .	4,701	-----	-----	-----	-----	24	-----	-----	-----	-----	-----	-----
KAMUELA . . .	2,146	-----	-----	-----	-----	19	-----	-----	-----	-----	-----	-----
KONA . . .	10,272	-----	-----	-----	-----	-----	-----	-----	-----	-----	-----	-----
KAHULUI . . .	63,971	558	-----	2	-----	-----	577	215	-----	-----	-----	-----
HANA . . .	2,586	-----	-----	-----	-----	9	-----	-----	-----	-----	-----	-----
MOLOKAI . . .	10,548	-----	-----	-----	-----	-----	-----	-----	-----	-----	-----	-----
KALAU-PAPA . . .	7,732	-----	-----	-----	-----	-----	-----	-----	-----	-----	-----	-----
LANAI . . .	4,844	-----	-----	-----	-----	75	-----	-----	-----	-----	-----	-----
LIHUE . . .	46,776	-----	-----	-----	-----	-----	-----	-----	-----	-----	-----	-----
<b>TOTALS</b>	<b>736,075</b>	<b>394,192</b>	<b>121,086</b>	<b>3,922</b>	<b>3,107</b>	<b>11,738</b>	<b>84,340</b>	<b>2,646</b>	<b>13,345</b>	<b>29,362</b>	<b>6,484</b>	<b>65,853</b>

Total Inter-Island Revenue Air Mail, July 1, 1953 to June 30, 1954—736,075 pounds

# INTER-ISLAND REVENUE AIR CARGO SUMMARY

Pounds Carried

Fiscal Year July 1, 1953 to June 30, 1954

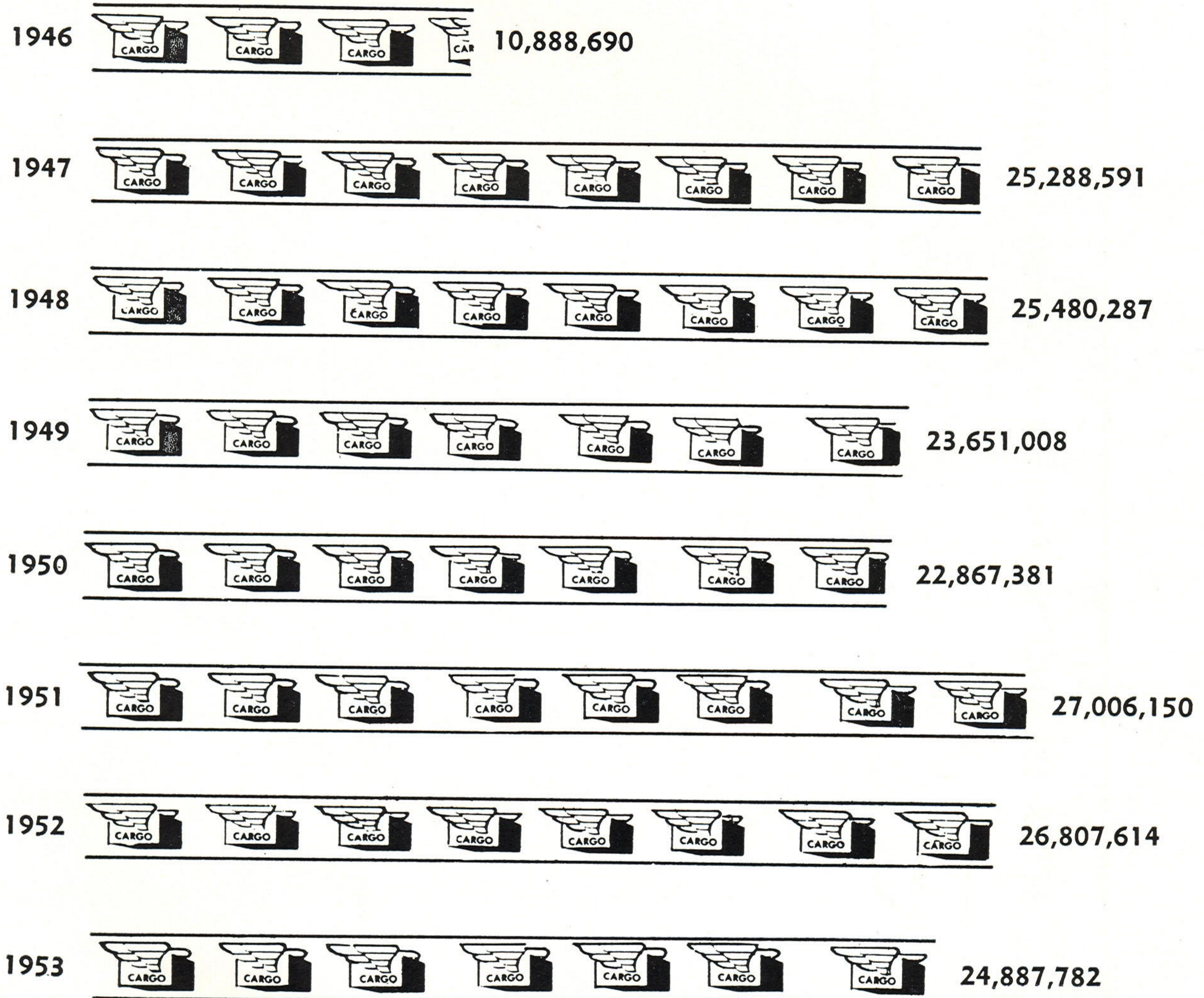
	To:										Port Allen	
	Honolulu	Hilo	Upolu	Kamuela	Kona	Kahului	Hana	Molokai	Kalau- papa	Lanai	Lihue	
From:												
HONOLULU	13,009,569	3,533,319	213,929	204,812	673,313	3,423,668	132,488	680,130	329,678	829,334	2,666,718	322,180
HILO	3,800,432	3,297,491	649	495	326,702	585	24,057	121,757	28,696	1,931	795	
UPOLU	343,561	310,885			25,792	1,430	2,728	565	400	1,711	2,287	
KAMUELA	1,508,297	1,476,311			30,242	32	747			317,122	22,857	
KONA	576,397	557,866			12,127	260	2,146					
KAHULUI	2,566,993	1,847,581	22,867	1,835	18,362	5,934	91,461	4,000				
HANA	39,127	36,139			428		840					
MOLOKAI	377,501	231,008	1,463	625	3,407	50,141	772	46,850		2,258	2,331	
KALAU-PAPA	75,034	73,034					2,000					
LANAI	199,540	123,296	1,175	200	5,811	51,731		4,921			702	
LIHUE	759,729	727,308	102		664							
PORT ALLEN	5,462	5,462				18,171		2,757		84		
<b>TOTALS</b>	<b>23,261,642</b>	<b>8,686,381</b>	<b>240,185</b>	<b>207,472</b>	<b>702,052</b>	<b>3,939,002</b>	<b>141,501</b>	<b>811,787</b>	<b>380,528</b>	<b>1,274,762</b>	<b>2,724,786</b>	<b>322,180</b>

Total Inter-Island Revenue Air Cargo, July 1, 1953 to June 30, 1954—23,261,642 pounds



*Honolulu International Airport*  
*Air Cargo Volume*  
**CALENDAR YEAR TOTALS**

—POUNDS—

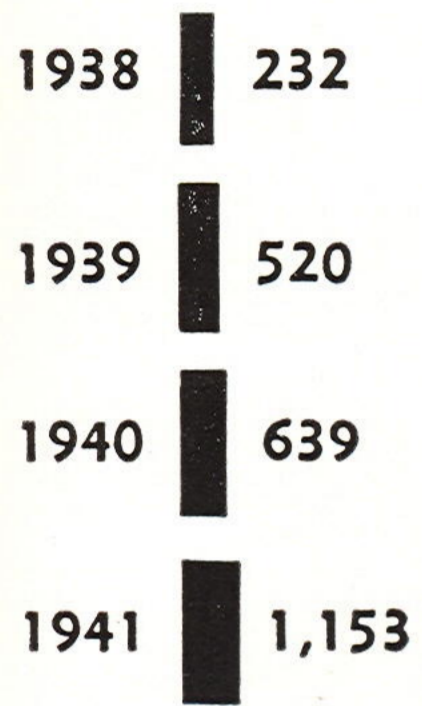


Source: Hawaii Aeronautics Commission  
 Above totals represent both Overseas and Inter-  
 Island Air Cargo, Incoming and Outgoing.

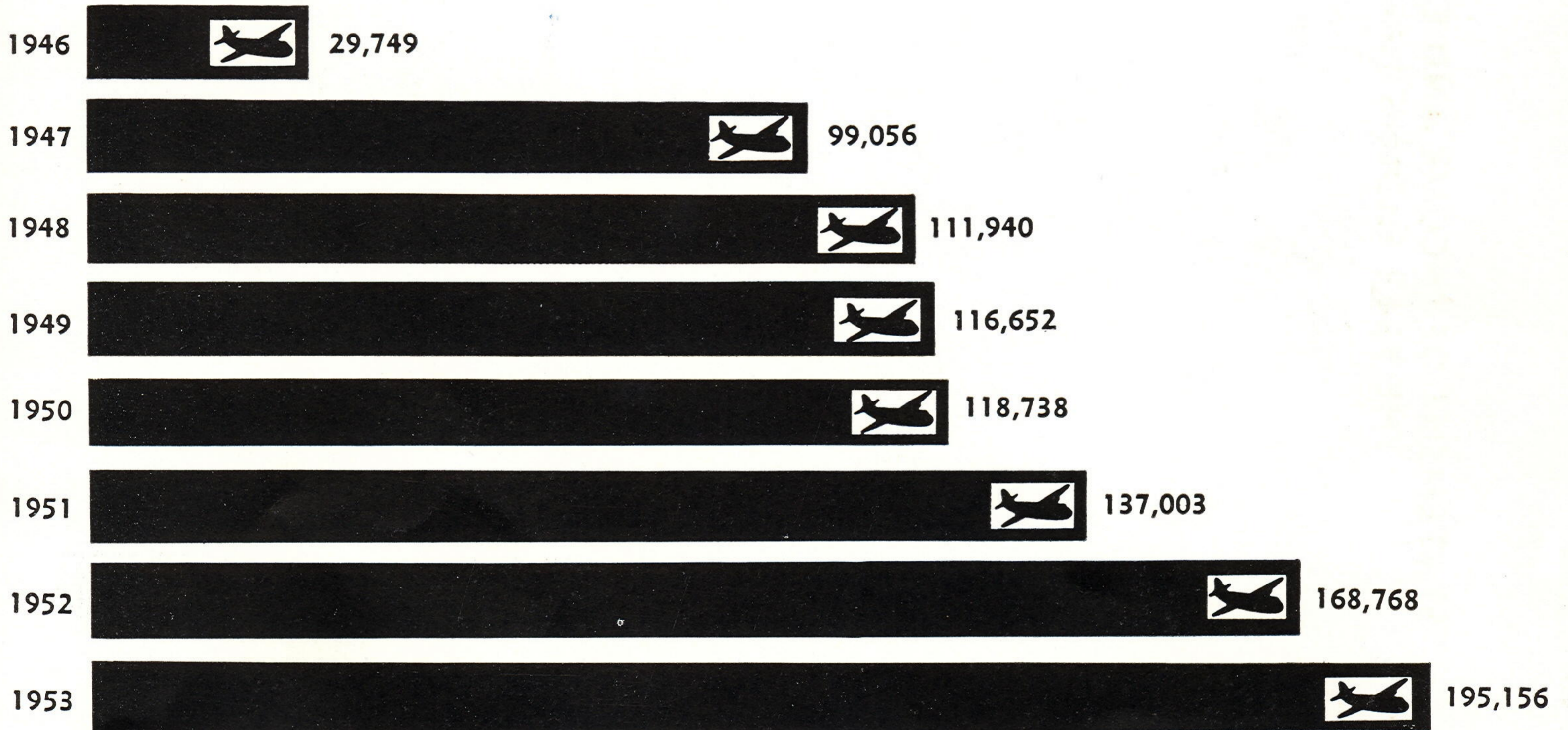
# STATEMENT OF INCOME AND EXPENDITURES FOR THE YEAR ENDING JUNE 30, 1954

	Total All Funds	Fuel Tax Fund S-7161	Revenue Fund S-7169	Federal Grants	General & Loan Funds Appropriation
Opening Balances, July 1, 1953 .....	\$2,423,247	\$1,722,606	\$ 16,526	\$ 74,570	\$609,545
<b>INCOME</b>					
<b>OPERATING INCOME</b>					
Aeronautical Revenues					
Fuel Tax Collections .....	993,906	993,906	-----	-----	-----
Landing Fees .....	60,284	-----	60,284	-----	-----
Rentals of Land .....	19,314	-----	19,314	-----	-----
Rentals of Buildings & Hangars .....	96,323	-----	96,323	-----	-----
Sale of Aviation Fuel .....	2,807	-----	2,807	-----	-----
Non-Aeronautical Revenues					
Concession Fees .....	127,354	-----	127,354	-----	-----
Rentals of Land & Buildings .....	230,033	-----	230,033	-----	-----
Other Fees and Income .....	60,585	-----	60,585	-----	-----
<b>NON-OPERATING INCOME</b>					
Federal Grants Received .....	172,099	-----	-----	172,099	-----
Refunds, Transfers, etc. ....	86,345	74,107	128	-----	12,110
<b>TOTAL INCOME</b> .....	<b>1,849,050</b>	<b>1,068,013</b>	<b>596,828</b>	<b>172,099</b>	<b>12,110</b>
<b>EXPENDITURES</b>					
Current Expenditures					
Salaries & Wages .....	620,530	434,587	185,943	-----	-----
Other Current Expenses .....	326,519	16,796	309,723	-----	-----
Aviation Fuel Purchased For Resale .....	2,510	-----	2,510	-----	-----
Inventories & Other Prepaid Expenses .....	2,099	-----	2,099	-----	-----
Capital Expenditures					
Equipment .....	49,457	24,308	25,149	-----	-----
Land, Buildings & Construction Projects .....	931,736	682,588	1,890	246,669	589
Bond Payments .....	32,988	-----	32,988	-----	-----
<b>TOTAL EXPENDITURES</b> .....	<b>1,965,839</b>	<b>1,158,279</b>	<b>560,302</b>	<b>246,669</b>	<b>589</b>
<b>CLOSING BALANCES AT JUNE 30, 1954</b> .....	<b>2,306,458</b>	<b>1,632,340</b>	<b>53,052</b>	-----	<b>621,066</b>
<b>ENCUMBRANCES</b>					
Unliquidated Contract Encumbrances .....	17,271	17,271	-----	-----	-----
Other Construction Work-In-Progress .....	1,849,174	1,385,580	-----	-----	463,594
<b>TOTAL ENCUMBRANCES</b> .....	<b>1,866,445</b>	<b>1,402,851</b>	-----	-----	<b>463,594</b>
<b>NET UNENCUMBERED BALANCES</b> .....	<b>440,013</b>	<b>229,489</b>	<b>53,052</b>	-----	<b>157,472</b>

*Honolulu International Airport*  
*Overseas Air Passenger Traffic*  
CALENDAR YEAR TOTALS



1942 to 1945 War Years (Information Restricted)



Source: Hawaii Aeronautics Commission  
Totals are for Incoming and Outgoing pas-  
sengers between mainland U.S., Hawaii and  
other countries



June 1954  
Hawaii Aeronautics Commission  
Honolulu, Hawaii