

# Annual Report



1955

## Commissioners

Francis K. Sylva ..... Chairman - Oahu  
 Dorsey W. Edwards ..... Vice Chairman - Kauai  
 Ralph C. Honda ..... Secretary - Oahu  
 Richard H. Wheeler ..... Member - Oahu  
 Charles J. Pietsch, Jr. .... Member - Oahu  
 David Furtado ..... Member - Hawaii  
 Cable A. Wirtz (From Sept. 1954) .... Member - Maui  
 George Y. Kobayashi (From June 1955) Member - Oahu  
 O. J. Burnett (Until May 1955) ..... Member - Oahu  
 Roy A. Vitousek, Jr. (Until May 1955) Member - Oahu  
 Harold W. Rice (Until Aug. 1954) ..... Member - Maui

## Executive Officers

Randolph M. Lee ..... Director of Aeronautics  
 John E. Batchelder ..... Asst. Director of Aeronautics

## Administrative Staff

Mark E. Martin ..... Airport Manager - Honolulu  
 Henry C. Peters ..... Asst. Manager - Honolulu  
 Bo Tong Wat ..... Finance Executive  
 Charles W. Dahlberg ..... Airport Manager - Hawaii  
 William Neilson ..... Airport Manager - Maui  
 Coin E. Perin ..... Airport Manager - Kauai

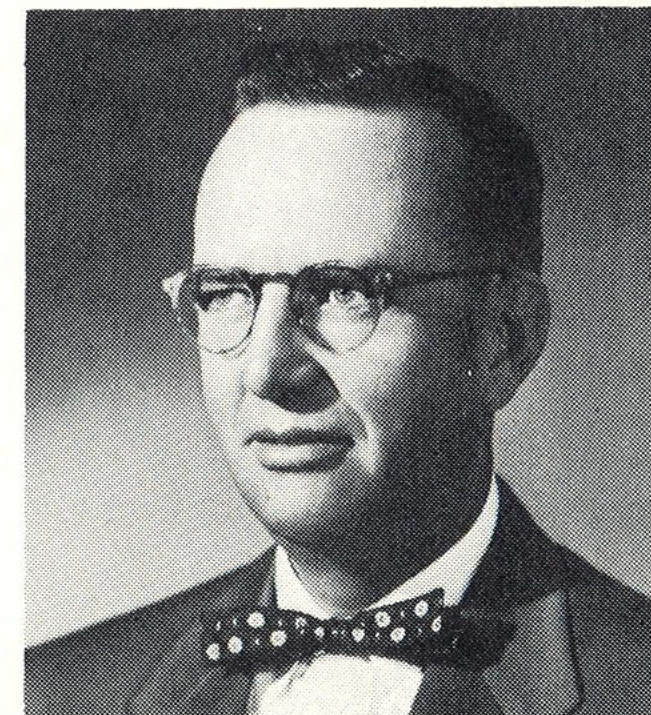
**2nd Floor  
 OVERSEAS TERMINAL  
 BUILDING  
 HONOLULU  
 INTERNATIONAL AIRPORT**



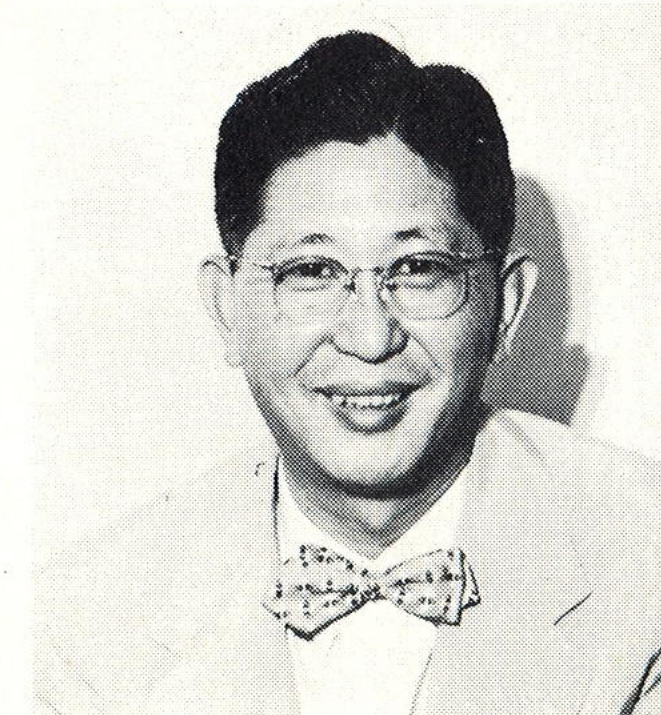
**HAWAII AERONAUTICS**



Francis K. Sylva



Dorsey W. Edwards



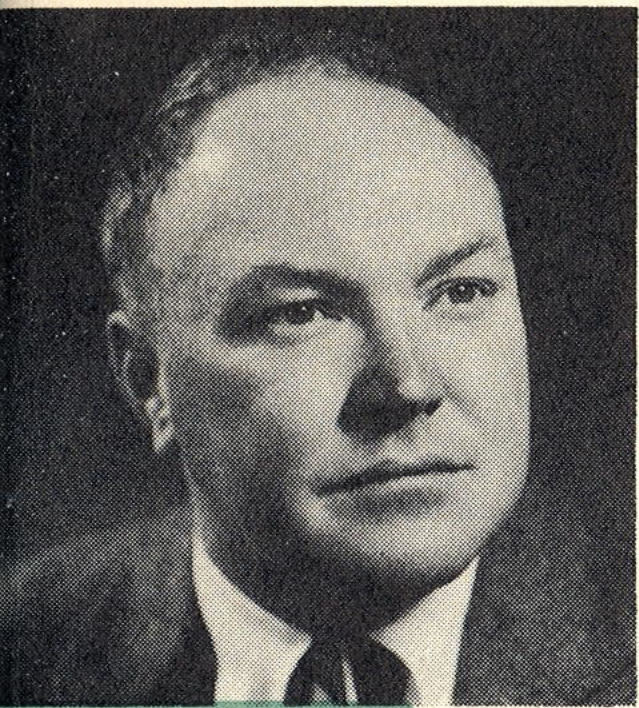
Ralph C. Honda



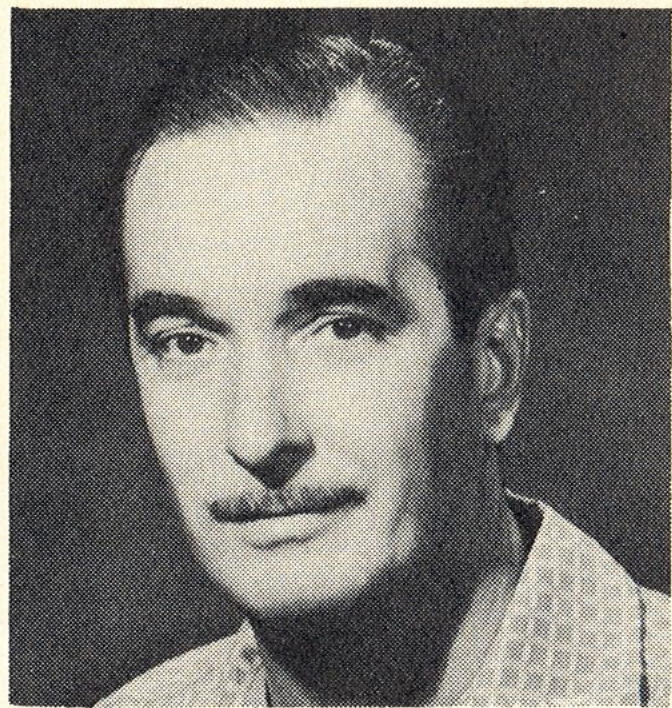
Richard H. Wheeler

# COMMISSION

## Commissioners



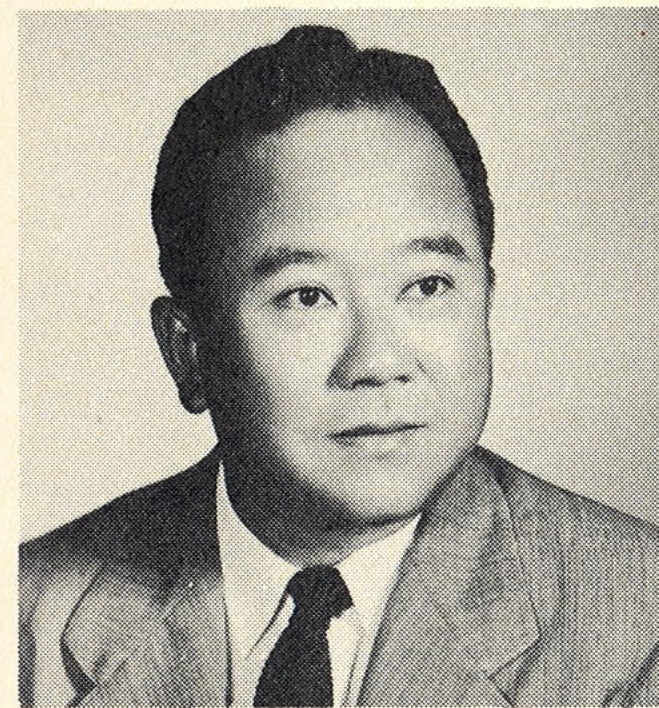
Charles J. Pietsch, Jr.



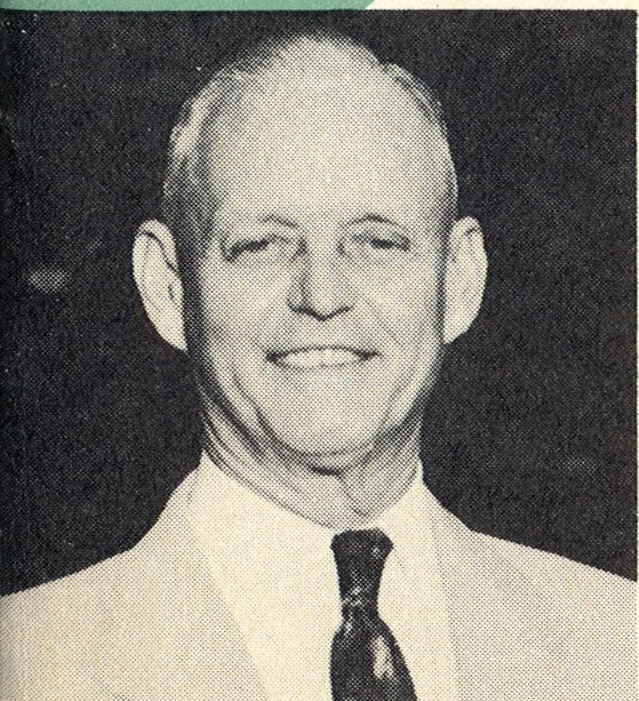
David Furtado



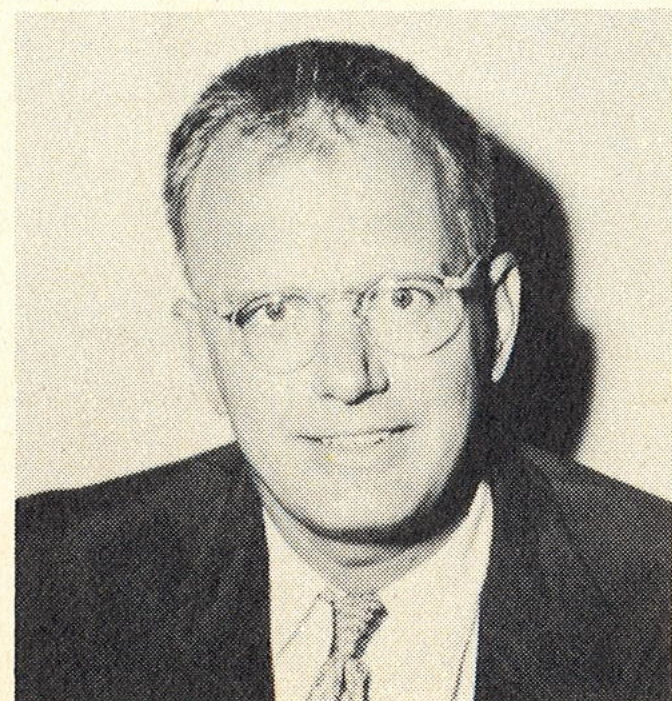
Cable A. Wirtz



George Y. Kobayashi



O. J. Burnett



Roy A. Vitousek, Jr.



Harold W. Rice



Randolph M. Lee



John E. Batchelder

## CONTENTS

### Introduction

Report to the Governor ..... page 2  
 Through the Years ..... page 4

### Honolulu International Airport

The Construction Story ..... page 8  
 Monthly Aircraft Operations ..... page 9  
 Summary of Passenger, Cargo, and  
 Air Mail Volume ..... page 10  
 Overseas Air Passenger  
 Traffic Totals ..... page 11

### Territorial Airports: Kauai, Maui, and Hawaii Counties

The Construction Story ..... page 14  
 General Lyman Field      Kamuela Airport  
 Kona Airport              Upolu Airport  
 Lihue Airport              Port Allen Airport  
 Molokai Airport          Kalaupapa Airport  
 Lanai Airport              Hana Airport  
                                     Kahului Airport  
 Summary of Inter-Island Passenger Traffic,  
 Air Cargo, and Air Mail ..... page 20  
 Inter-Island Passenger Traffic ..... page 22

### Statement of Income and Expenditures

### Trends

## Executive Officers



**The Honorable Samuel Wilder King, Governor of Hawaii, and Dr. Francis K. Sylva, chairman Hawaii Aeronautics Commission, review this year's accomplishments.**

## REPORT TO THE GOVERNOR

Honolulu International Airport handled 213,659 aircraft operations during the fiscal year, representing a decrease of 16.3 percent from the previous fiscal year. However, Honolulu International Airport maintains its *fourth ranking position* in the nation's high density airports.

Although aircraft operations showed a decrease, *overseas passenger traffic* totalled 255,421—an *increase of 24.1 percent*, which is attributed to the continued popularity of air tourist service and to acceleration of the tourist promotional program conducted by the airlines, the travel industry and the Hawaii Visitors Bureau. According to the 1954 statistical report of the Hawaii Visitors Bureau, 76 percent of the mainland-U.S. visitors arrived by air.

On January 1, 1955 United Air Lines inaugurated the first DC-7 passenger service to Hawaii. The new service replaces United's Boeing Stratocruiser flights and reduces flight time between California and Hawaii by 1¼ hours.

On April 27, 1955 Northwest Airlines inaugurated its turbo-compound Super Constellation service, as an addition to DC-6B air tourist flights between the Pacific Northwest and Hawaii.

For the territory-wide airport system, *inter-island passenger traffic* rose to 587,016—a *gain of 2.9 percent*, resulting from increased travel to the neighbor islands by visitors.

A conference was held between the Commission and Mr. F. Merritt Ruhlen, Civil Aeronautics Board Examiner, for the purpose of discussing the planning and programming of airport facilities related to requirements of two local carriers. Mr. Ruhlen rendered invaluable advice to the Commission.

In an effort to assist in relieving the critical unemployment situation in the territory, the Hawaii Aeronautics Commission participated in the Governor's Emergency Work Program, expending \$36,174 from airport funds for services of 35 contract laborers, on projects at the various airports.

A matter of especial interest was a briefing by Mr. Don Martin, member of the Airport Use Panel, on the functions of the Use Panel. As a result of discussions with Mr. Martin, the Commission adopted a Resolution requesting the assistance of the Use Panel in reviewing problems

surrounding the development of facilities and joint military-civil use of Honolulu International Airport. Subsequently, however, *the Hawaii Aeronautics Commission, in cooperation with the military services, has held in abeyance work on new terminal facilities and the Master Plan for Honolulu International Airport, pending completion of a joint Master Plan of the composite area* comprised of Honolulu International Airport, Hickam Air Force Base and Keehi Lagoon. This action deferred the filing of the Resolution with the Airport Use Panel by the Commission.

Plans for the extension of Kona Airport runway were cancelled and funds previously set aside for that purpose were transferred to the General Lyman Field rehabilitation project.

Transfer of ownership title of Kahului Airport, as authorized by Public Law 377, has not as yet been effected, with the result that the HAC is still unable to initiate vitally needed improvements to the airport. Meanwhile, the HAC continues to provide funds for the operation and maintenance of the interim control tower, at an annual cost of approximately \$41,452.

The problem arising from the removal of certain pipe at Maui Airport in 1952, was settled to the satisfaction of the military, HAC and Civil Aeronautics Administration.

A milestone in the history of aviation in the territory was the commemoration, on November 11, 1954, of *the 25th Anniversary of Hawaiian Airlines' founding*. In its quarter-century of operation, HAL maintained a perfect record of safety, becoming the first American airline to achieve this distinction.



Airport improvement projects which were completed during the fiscal year include resurfacing of runway 8-26, and improvement of roadway and car parking facilities at the Hawaiian Airlines terminal area, Honolulu International Airport; improvement of the roadway to Lihue Airport terminal, and rehabilitation of Molokai Airport runway.

Projects now underway include the construction of small plane hangars at Honolulu International Airport and General Lyman Field.

Projects *approved for the immediate future* include the construction of a joint *passenger-freight terminal at Molokai Airport*, installation of a medium intensity runway lighting system for Kamuela Airport, terminal building alteration and roadway improvement at Hana Airport, runway rehabilitation for Lihue and Lanai airports, improvement and expansion of Lihue Airport terminal, runway lighting for Molokai Airport and General Lyman Field, construction of a new maintenance base yard building at Honolulu International Airport, and reconstruction of runway 3-21 at General Lyman Field.

Revenue from the 3½-cent per gallon *tax on aviation fuel* amounted to \$827,921—a *decrease of 16.7 percent* from the previous fiscal year.

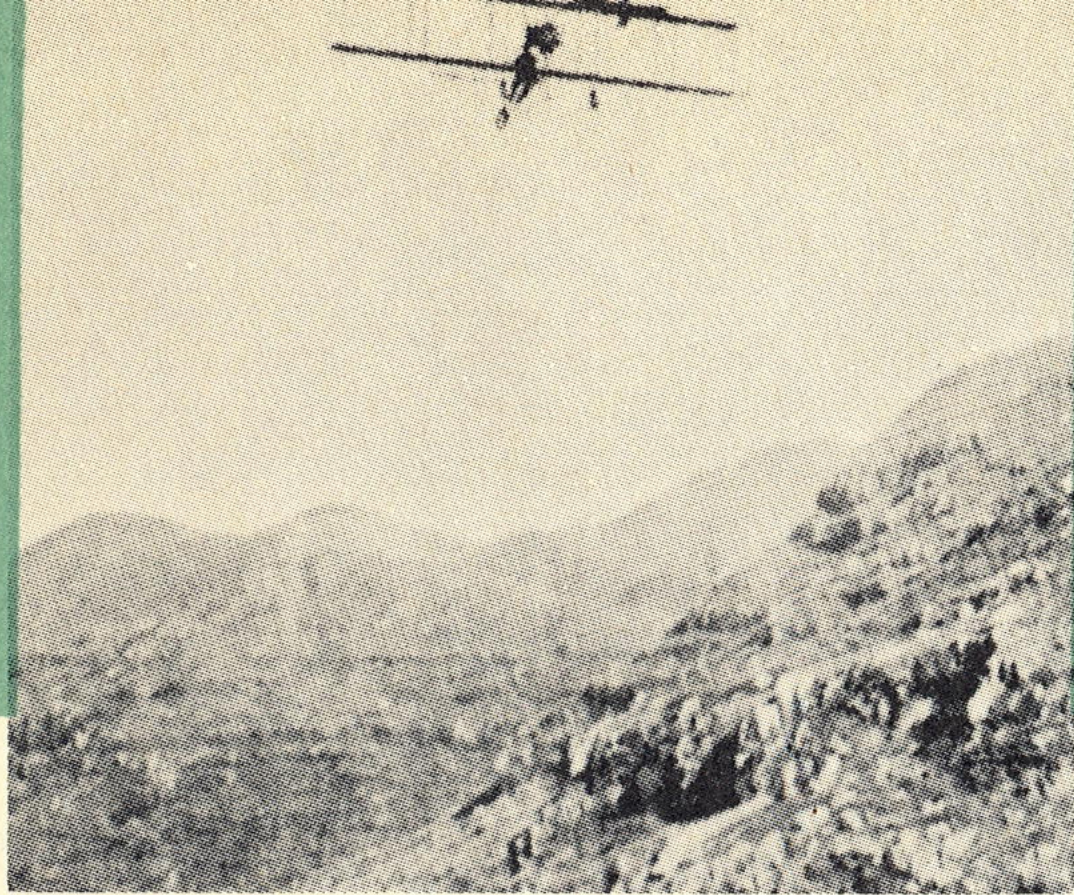
Revenue from airport use fees and charges amounted to \$648,552. In addition, \$83,362 was received in Federal grants, and \$24 from other sources.

Operating expenditures totalled \$949,324, improvements and construction projects \$384,369, and bond redemption \$32,989.

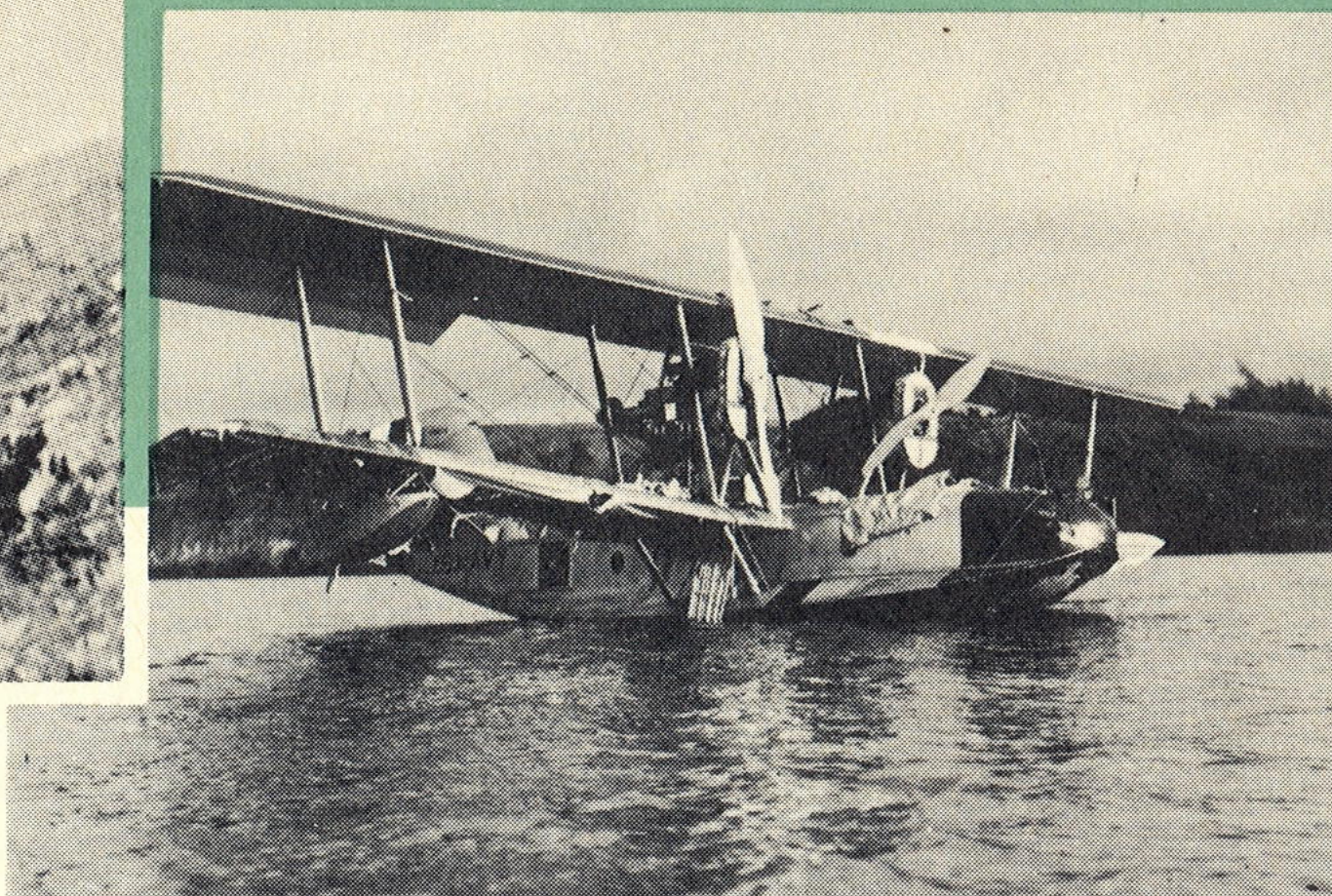
Respectfully submitted,

A handwritten signature in cursive script, reading "Francis K. Sylva". The signature is written in black ink and is positioned above the printed name.

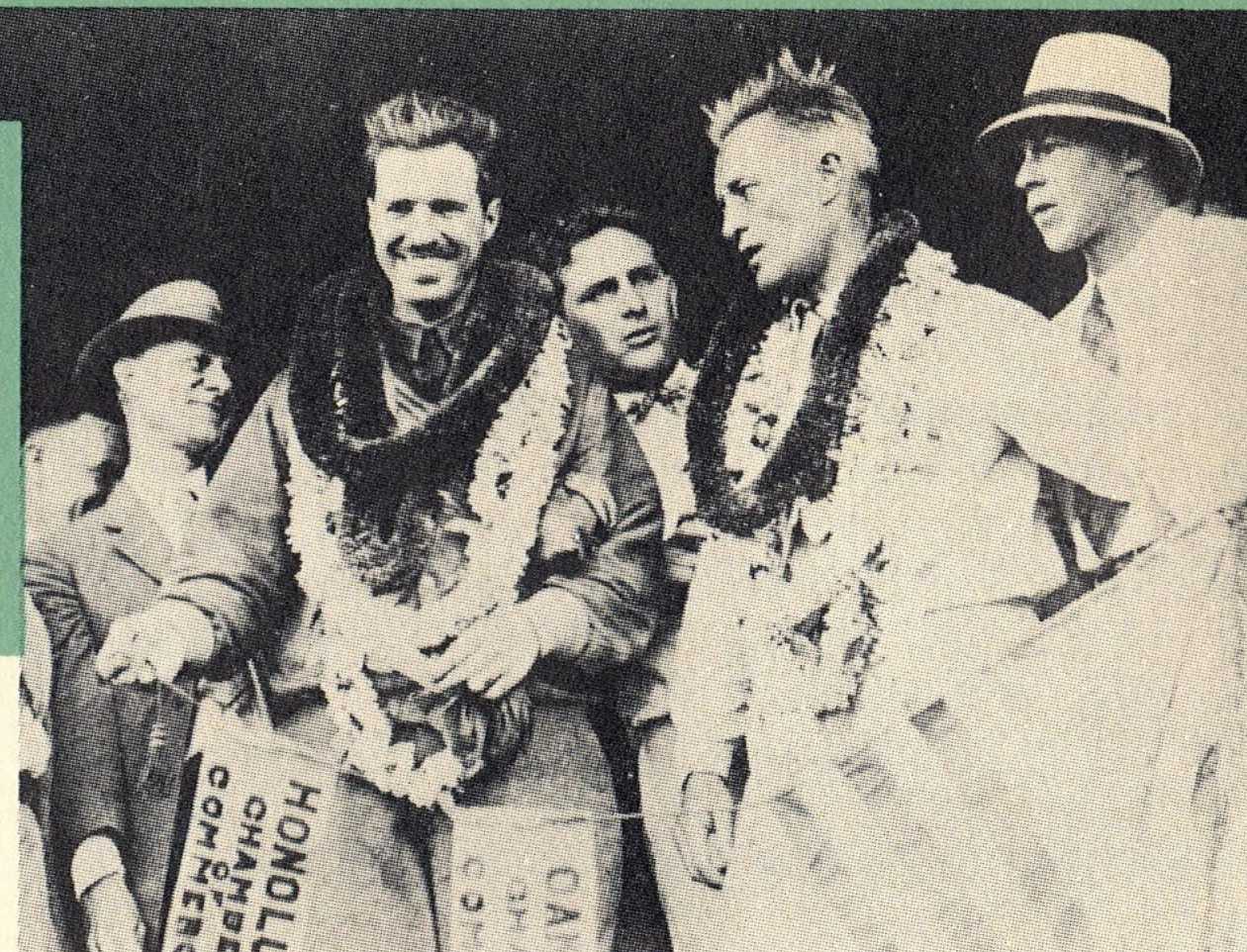
Francis K. Sylva,  
Chairman



1911—First flight in Hawaii by Bud Mars in the “Hawaiian Skylark” over Kapiolani Park.



1925—First to cross the Pacific from the mainland to Hawaii was the PN9 No. 1, flown by Commander John Rodgers.



1927 — Ernest Smith and Emory Bronte, first civilians to fly the Pacific.

## THROUGH THE YEARS

**1911** - First aircraft flight in Territory of Hawaii by Bud Mars in the “Hawaiian Skylark” from Polo Field, Kapiolani Park. First flight at Hilo by pilot named Walker.

**1917** - First Army planes brought to Hawaii.

**1919** - An Army plane made first inter-island flight (Oahu to Hawaii).

**1925** - Commander John Rodgers departed from San Pablo Bay, California, for Hawaiian Islands. Fuel shortage caused landing at sea only few miles from destination—crew and plane picked up on 11th day.

100 acres of land and \$10,000 made available by Legislature for first Hilo Airport.

\$45,000 appropriated by Legislature, contingent upon \$20,000 subscription by private citizens, for John Rodgers Airport at Honolulu.

**1927** - Ernest L. Smith and Emory Bronte attempted first land plane flight to Hawaii from Oakland, California, in a Travelair monoplane “City of Oakland”. Shortage of fuel caused forced landing on Molokai. Lts. Maitland and Hegenberger, flying U. S. Army tri-motor Fokker “Bird of Paradise” from Oakland,

California, landed at Wheeler Field, Oahu, after 25 hours and 50 minutes in the air. This was the forerunner of other flights soon to be made.

Five airplanes took off from Oakland Airport for Wheeler Field, Oahu, in the historic “Dole Derby”. Won by Art Goebel, pilot, with Lt. Davis as navigator, in a Travelair monoplane “Woolaroc”; time for the flight was 26 hours and 8 minutes. Martin Jensen, pilot, with Capt. Schluter as navigator, came in second. The other three airplanes in the race were never heard from. The tragic results of this flight put an end to further attempts at the 2400-mile over-water flight by single engine land planes until 1934.

Honolulu Airport completed and named in honor of Cmdr. John Rodgers who made first attempted trans-Pacific flight in Navy sea-plane.

Land set aside for Molokai Airport by Governor’s Executive Order.

**1928** - Capt. Kingsford-Smith landed at Wheeler Field in tri-motor Fokker “Southern Cross” en route to Brisbane, Australia, via Honolulu and Fiji. The flight from Oakland to Honolulu took 27 hours, 30 minutes.

Upolu Airfield on Hawaii first licensed.  
Hilo Airport dedicated.

**1929** - First commercial air service in Territory started by Inter-Island Airways, using Sikorsky amphibians.  
First commercial air service to Molokai Airport.  
First commercial air service to Maui.  
First commercial air service to Port Allen, Kauai.

**1930** - First commercial air service to Lanai.

**1931** - Legislature appropriated \$35,000 for airstrip at Wailua, Kauai.

**1934** - Mass Navy flight with six Consolidated seaplanes from San Francisco to Pearl Harbor. Flight was commanded by Lt. Commander McGinnis and all planes completed the trip without incident.

Kalaupapa Airport opened and served by commercial service. Kingsford-Smith made first east-bound flight from Hawaii to Mainland as last leg of eastward crossing of Pacific from Australia, in single-engine Lockheed. 15 hours time—Honolulu to Oakland.

**1935** - Amelia Earhart made first solo flight from Hawaii to mainland in a Lockheed-Vega. Time—18 hours and 17 minutes.  
First commercial flight across Pacific, San Francisco to Honolulu, Midway, Wake, Guam and Manila.  
First commercial service to Hana Airport (Hamoia) on Maui.

**1938** - Maui Airport (Puunene) opened, replacing Maalaea Airfield as the major airport on Maui.

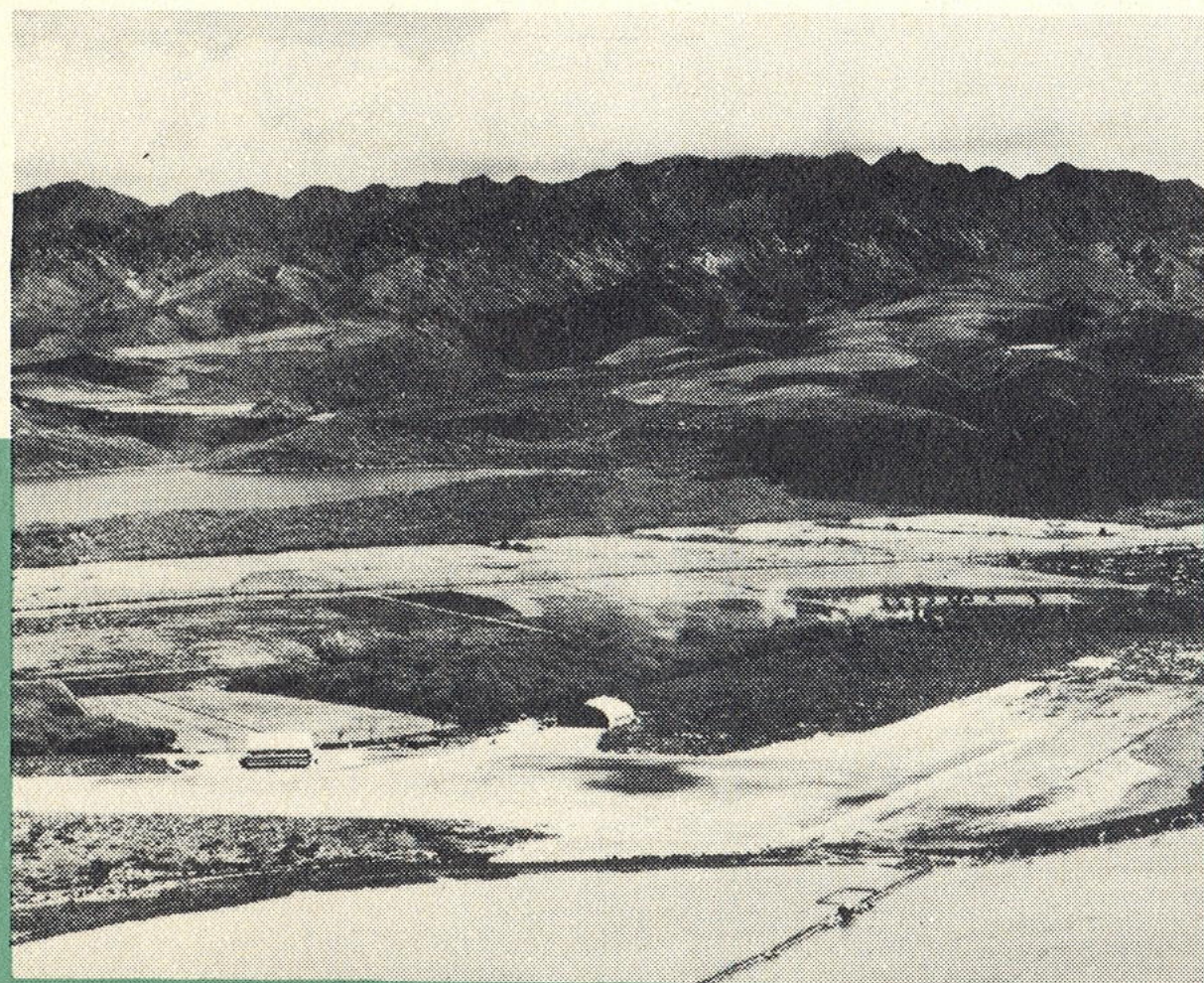
**1939** - \$9,000,000 federal grant for design and construction of Keehi Lagoon seadrome and other Territorial airports.

**1940** - Special appropriation of \$3,300,000 authorized by U.S. Congress for dredging of Keehi Lagoon.

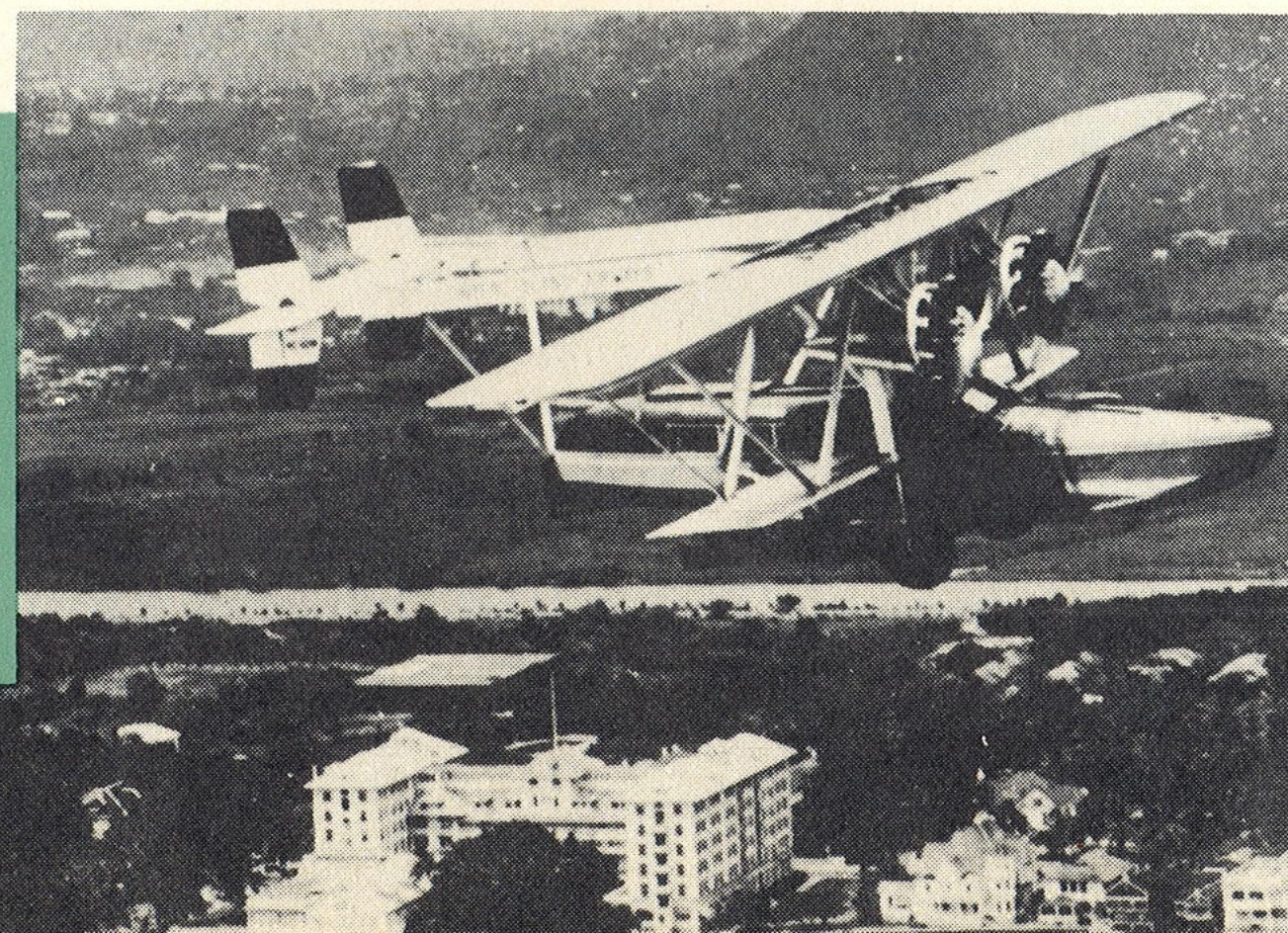
**1941** - Additional \$1,900,000 authorized for development of John Rodgers Airport in conjunction with seaplane project. Outbreak of World War II on December 7. Army began intensive development of John Rodgers Airport.

**1943** - Landplane area at John Rodgers Airport filled with spoil from seaplane dredging. Three runways completed. Navy began joint use of John Rodgers Airport with Army and started extensive construction program.

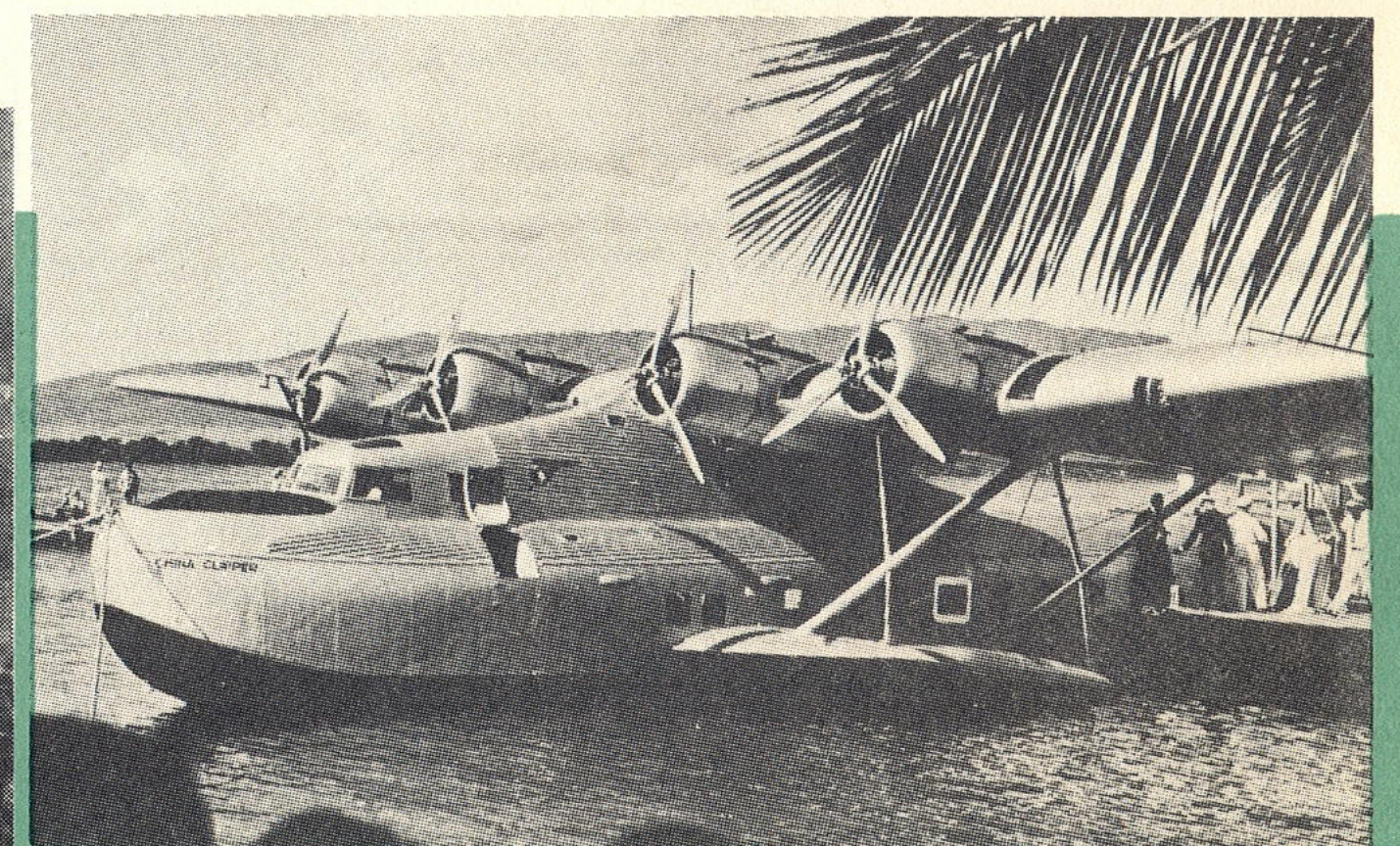
**1927—John Rodgers Airport (Honolulu Airport) viewed from the air.**

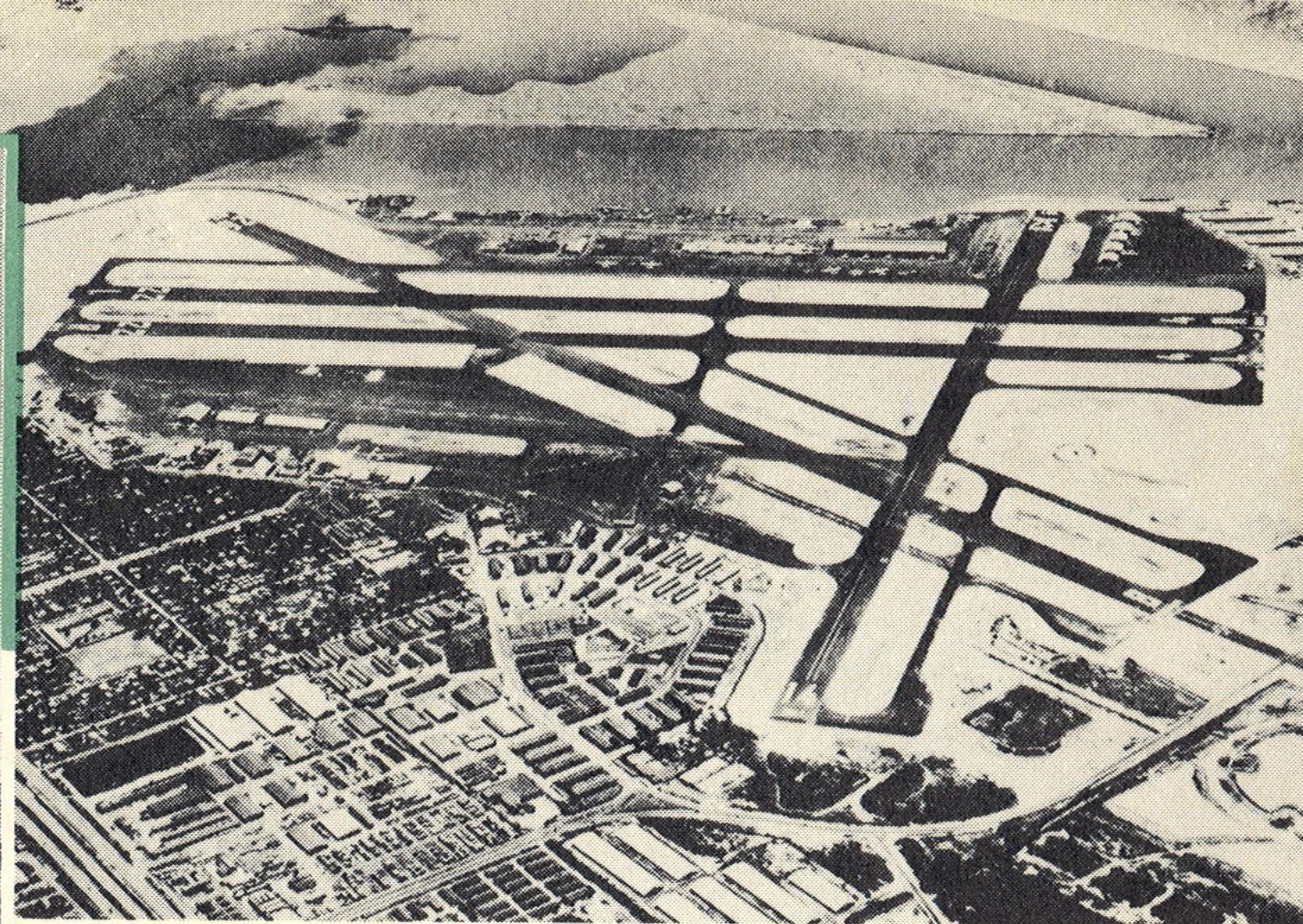


**1929—One of early Sikorsky S-38 amphibians of Inter-Island Airways, now Hawaiian Airlines, pictured flying past Waikiki.**



**1935—Pan Americans' "China Clipper", first commercial aircraft on a trans-Pacific route.**





1946—Honolulu Airport as it appeared from the air at the time it was returned to the territory.

TODAY—Hawaiian Airlines modern Convair servicing inter-island flights.

TODAY — A DC-7 Mainliner of UNITED AIR LINES preparing for it's trans-Pacific flight to the Mainland.

**1946** - John Rodgers Airport returned to Territory by Navy following end of World War II. Name changed to Honolulu Airport.

**1947** - Hawaii Aeronautics Commission created by Legislature.

**1948** - New Lanai Airport officially accepted by Hawaii Aeronautics Commission and Civil Aeronautics Administration. It was the first airport in the Territory to be completed under the Federal Airport Act of 1946.

Kipapa Airstrip leased for use by private and student fliers. Territory of Hawaii and War Assets Administration executed quitclaim deeds returning Maui Airport to the Territory of Hawaii.

**1949** - Kona Airport officially opened.

Hawaii Aeronautics Commission accepted Kahului Airport lease from U.S. Navy on a revocable permit basis.

**1950** - Lihue Airport officially opened.

New Hana Airport officially opened.

Old Hamoa Airfield, Maui, turned back to Commissioner of Public Lands.

**1951** - By Legislative act, name of Honolulu Airport changed to Honolulu International Airport. Runway 8 lengthened to 13,104 feet, making it one of world's longest. Decision made by HAC to move operations from Puunene to Kahului.

**1952** - Kahului became primary airport on Maui.


**1953** - New Kamuela Airport officially opened. First Inter-Island Convair type service.

**1954** - A milestone in the history of aviation in the territory was the commemorating, on November 11, of the *25th Anniversary of Hawaiian Airlines'* founding. In its quarter-century of operation, HAL maintained a perfect record of safety, becoming the first American airline to achieve this distinction.

**1955** - On January 1, United Air Lines inaugurated the first DC-7 passenger service to Hawaii. The new service replaces United's Boeing Stratocruiser flights and reduces flight time between California and Hawaii by 1¼ hours.

On April 27, Northwest Airlines inaugurated its turbo-compound Super Constellation service, as an addition to DC-6B air tourist flights between the Pacific Northwest and Hawaii.





# HONOLULU INTERNATIONAL AIRPORT

- **The Construction Story**
- **Aircraft Operations**
- **Summary of Passengers, Cargo, and Air Mail Volume**
- **Overseas Air Passenger Traffic Totals**
- **Inter-Island Air Passenger Traffic Totals**





**“Nerve center of the Airport”— The airport traffic control tower at Honolulu airport.**

## Honolulu International Airport

LAND AREA .....	4,053 acres
RUNWAYS	
4R-22L .....	200' x 7,004'
4L-22R .....	200' x 6,950'
14-32 .....	200' x 6,150'
8-26 .....	200' x 13,104'
AIRCRAFT OPERATIONS .....	213,659
PASSENGER TRAFFIC .....	775,441
AIR CARGO .....	28,129,549 lb.
AIR MAIL .....	8,065,970 lb.

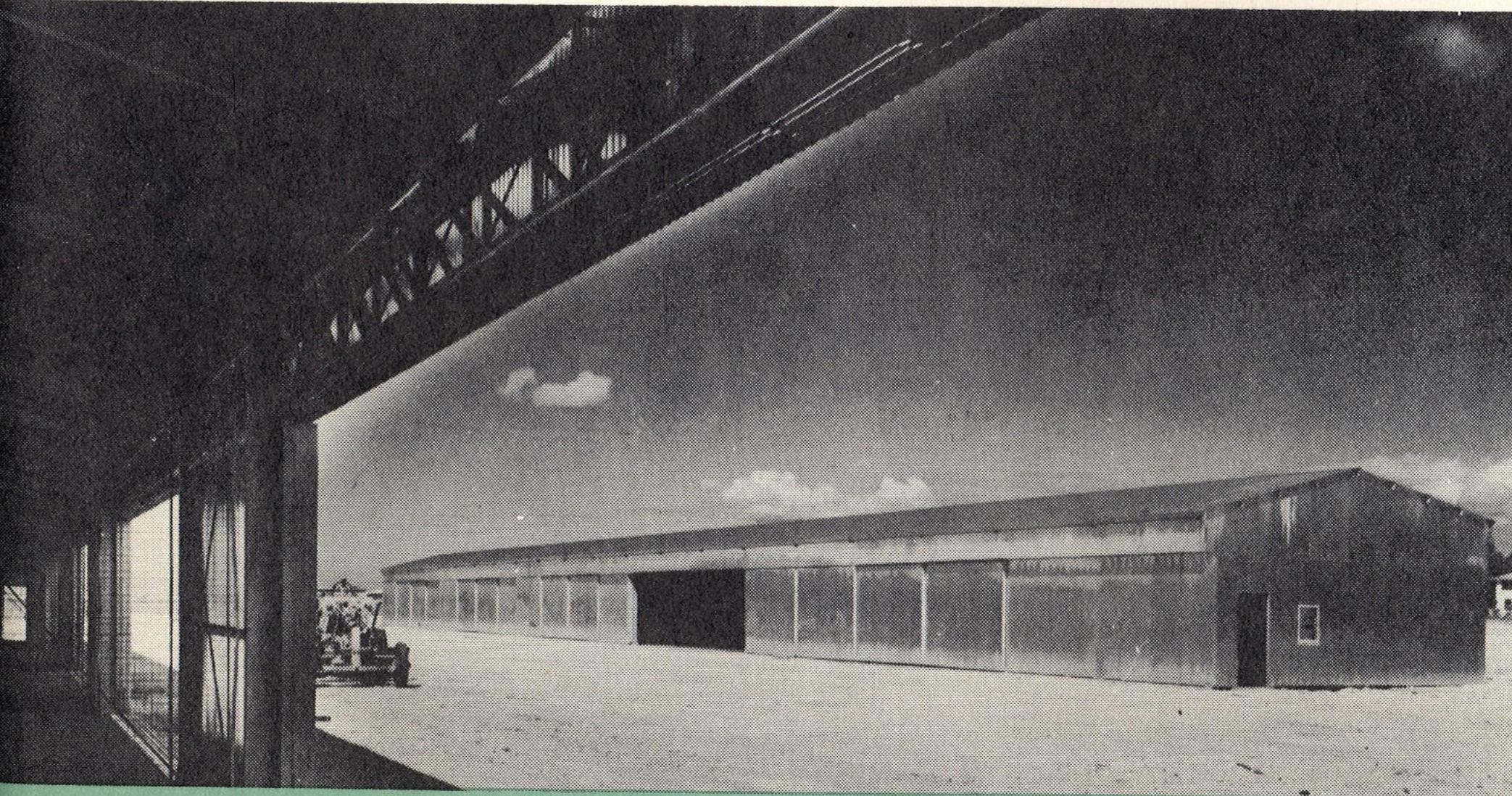
## The Construction Story

Initial Land Acquisition .....	Territorial Land
Additional Land Purchased .....	\$ 69,660
Completed Projects	
Acquisition and Improvements to Hangars .....	124,346
Auxiliary Power System .....	15,144
Fencing & Drainage .....	33,137
Improvements to Overseas Terminal Building .....	121,636
High Intensity Lighting System, Runway 8-26 .....	151,799
Lei Vending Stands .....	31,710
Extension of Runway 8-26 to Hickam Air Force Base .....	70,781
Rehabilitation of Runways .....	135,181
Medium Intensity Lighting, Runway 4L-22R .....	149,553
Expansion of HAL Terminal .....	11,687
Landscaping of Airport Roads .....	17,664
Rehabilitation of Temporary Buildings .....	52,489
Miscellaneous Improvements .....	94,613
Projects Under Construction	
Private Plane Hangars Including Taxiways .....	103,043
New Maintenance Baseyard .....	115,000
Projects in the Planning Stage	
Painting Overseas Terminal Building .....	9,000
Painting TPA Hangar .....	4,785
Security Fencing .....	35,000

# AIRCRAFT OPERATIONS

Fiscal Year July 1, 1954 to June 30, 1955

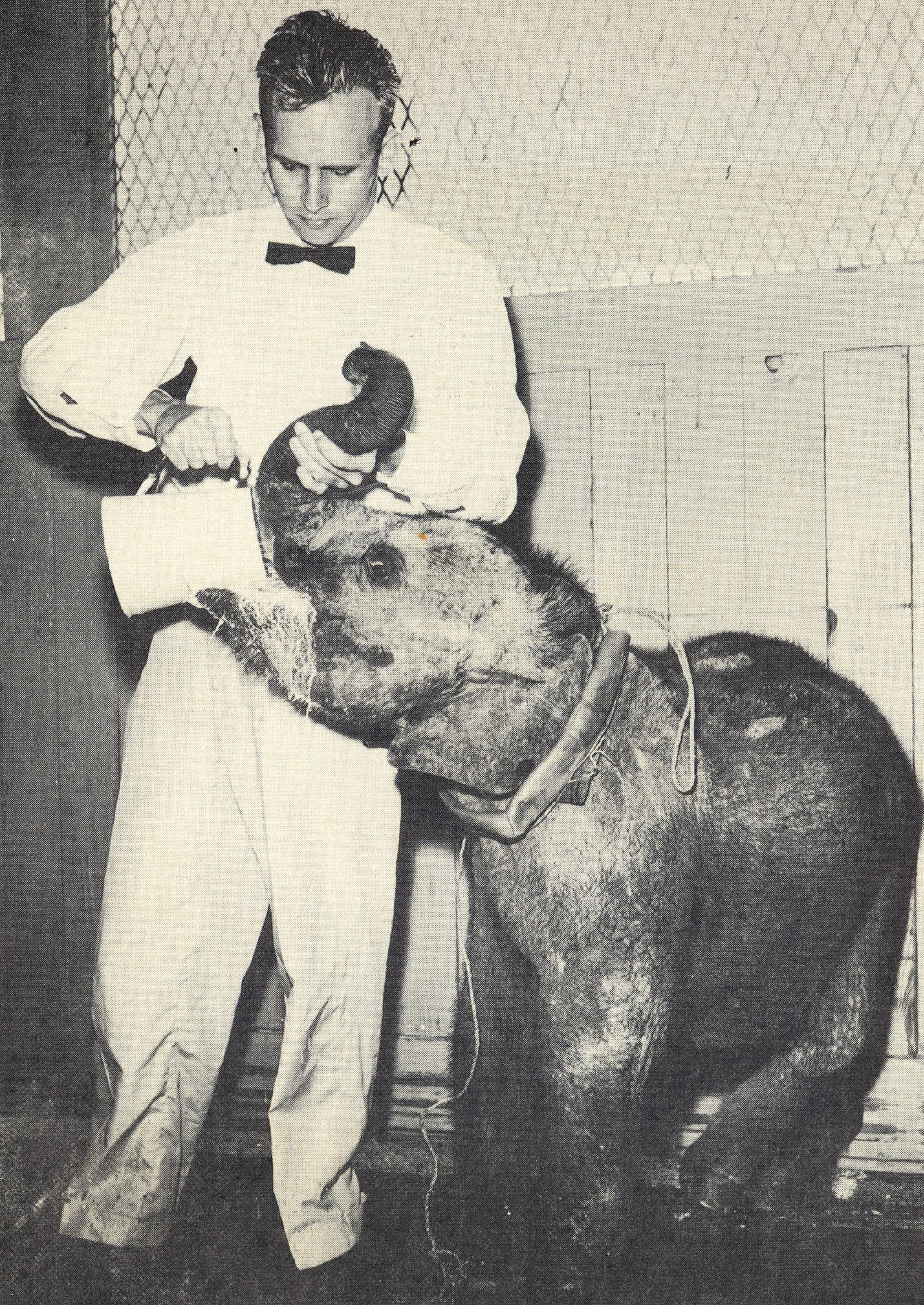
		Scheduled Carriers	Non-Scheduled Carriers	Other Civil Aircraft	Military Aircraft	Totals
1954	July	4,134	216	4,083	17,083	25,516
	Aug.	4,014	182	4,199	16,370	24,765
	Sept.	3,298	110	4,859	13,155	21,422
	Oct.	3,030	172	3,673	12,450	19,325
	Nov.	2,820	114	2,796	9,751	15,481
	Dec.	3,170	138	2,314	8,168	13,790
1955	Jan.	3,088	132	2,949	8,467	14,636
	Feb.	2,606	138	2,684	8,124	13,552
	Mar.	3,118	112	3,146	10,395	16,771
	Apr.	3,214	142	3,343	10,193	16,892
	May	3,120	126	3,187	9,078	15,511
	June	3,378	116	2,330	10,174	15,998
<b>TOTALS</b>		<b>38,990</b>	<b>1,698</b>	<b>39,563</b>	<b>133,408</b>	<b>213,659</b>
1953-54 Fiscal Year Totals		37,678	3,156	59,850	154,701	255,385
Percent gain or (loss)		3.5	(-46.2)	(-33.9)	(-13.8)	(-16.3)



Grading the taxiway as construction of the small plane hangars nears completion.



"Flower lei for you" — Lei stands at the entrance to Honolulu Airport.



“Cargo by air”—A baby elephant is fed during its brief stop-over at Honolulu en-route from the Orient to the mainland.

# SUMMARY OF PASSENGER, CARGO, AND AIR MAIL VOLUMES

Fiscal Year July 1, 1954 to June 30, 1955

## PASSENGERS

Inter-Island .....	
Overseas .....	
<b>TOTAL PASSENGERS</b> .....	
1953-54 Fiscal Year Total .....	
Percent Increase .....	

OUTGOING	INCOMING	THROUGH
259,063	260,957	—
103,425	100,246	51,750
362,488	361,203	51,750
343,000	340,594	36,439
5.7	6.1	42.0

## CARGO

Inter-Island .....	
Overseas .....	
<b>TOTAL CARGO</b> .....	
1953-54 Fiscal Year Total .....	
Percent Increase .....	

OUTGOING POUNDS	INCOMING POUNDS	THROUGH POUNDS
14,125,258	8,551,849	—
856,777	1,417,469	3,178,196
14,982,035	9,969,318	3,178,196
13,818,039	9,594,335	1,967,907
8.4	3.9	61.5

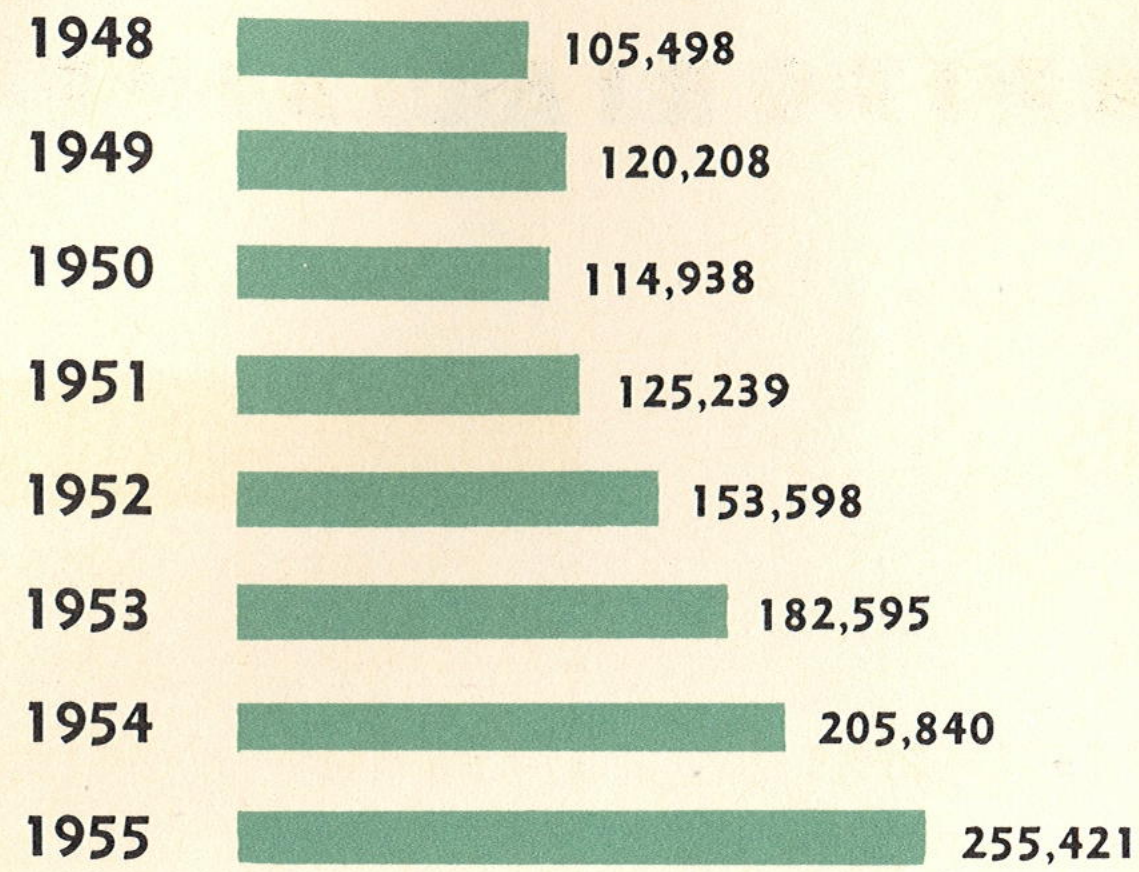
## AIR MAIL

Inter-Island .....	
Overseas .....	
<b>TOTAL AIR MAIL</b> .....	
1953-54 Fiscal Year Total .....	
Percent Increase .....	

OUTGOING POUNDS	INCOMING POUNDS	THROUGH POUNDS
345,674	385,230	—
1,602,619	1,589,577	4,142,870
1,948,293	1,974,807	4,142,870
1,582,219	1,584,119	1,685,312
23.1	24.7	145.8

# Overseas Air Passenger Traffic

## Fiscal Year Totals



Above totals represent incoming, outgoing and through passenger traffic.

# Inter-Island Air Passenger Traffic

## Fiscal Year Totals



Above totals represent incoming and outgoing passenger traffic.

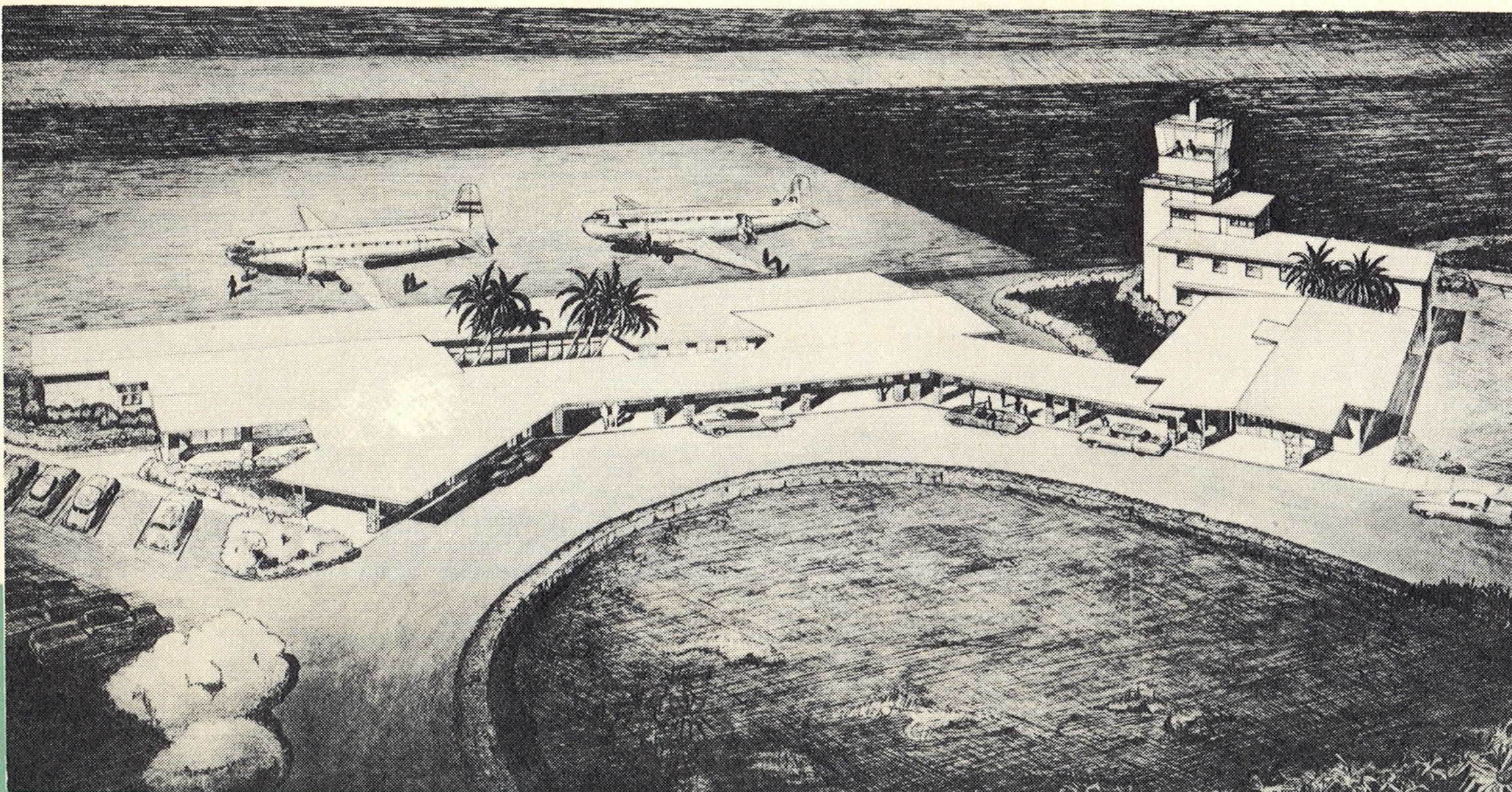


"Aloha" — Mainland visitors are greeted with leis and by hula dancers upon arrival in the islands.

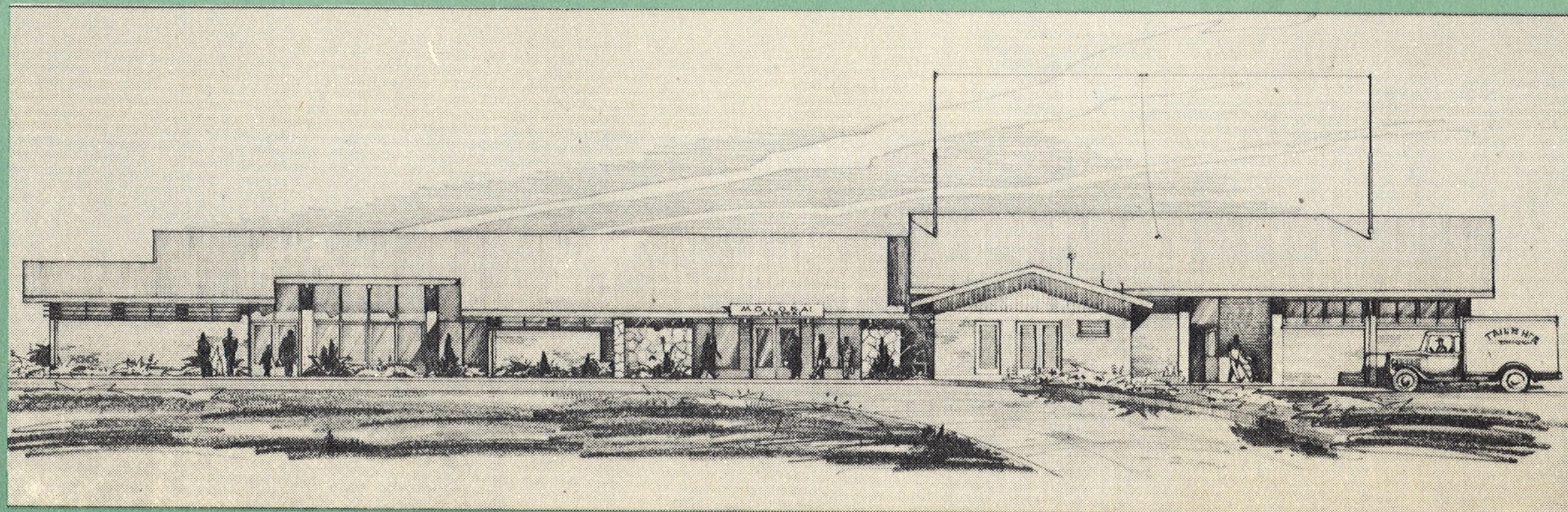


2311 KUO 3

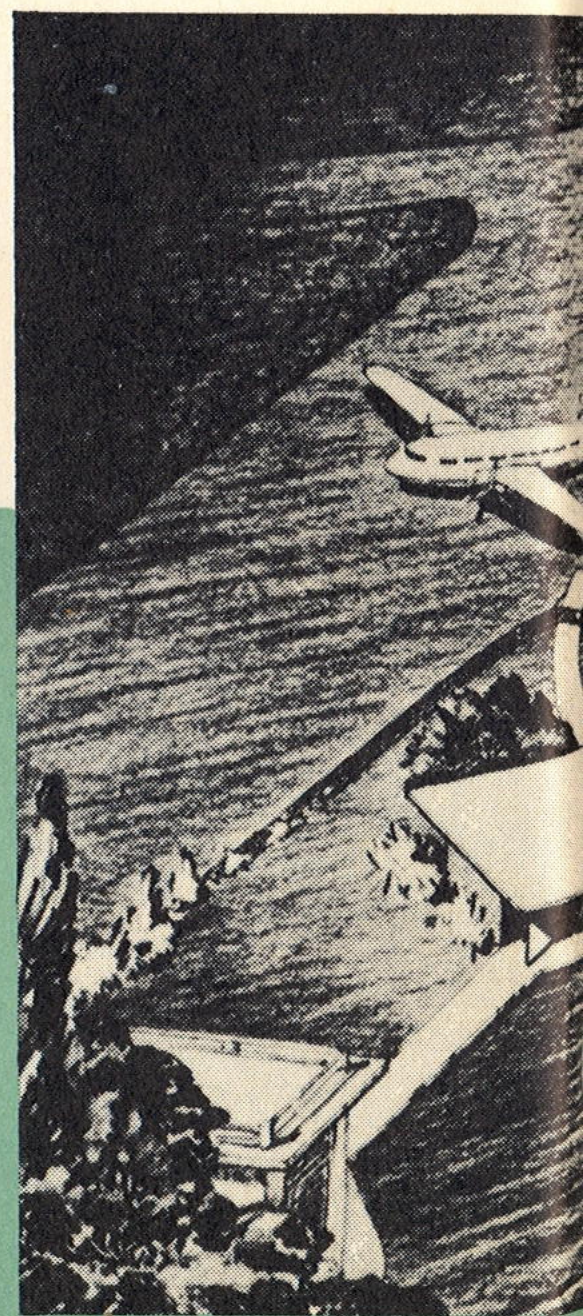
# TERRITORIAL AIRPORTS:



Terminal building, General Lyman Field, Hilo, Hawaii.



Proposed Molokai Airport, terminal building.



Lihue Airport terminal  
(As it will appear following)

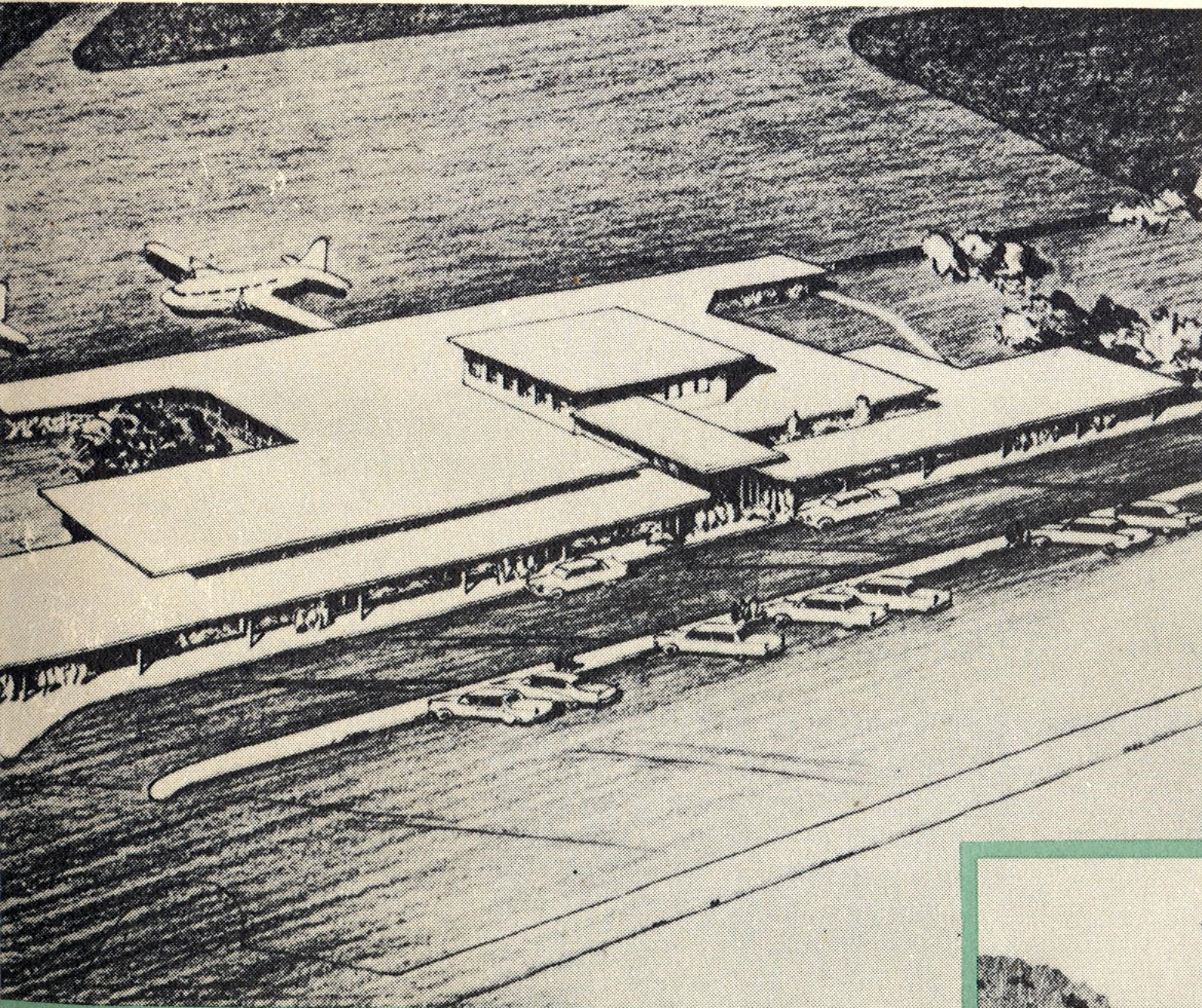
# KAUAI, MAUI, AND HAWAII COUNTIES

- **The Construction Story**

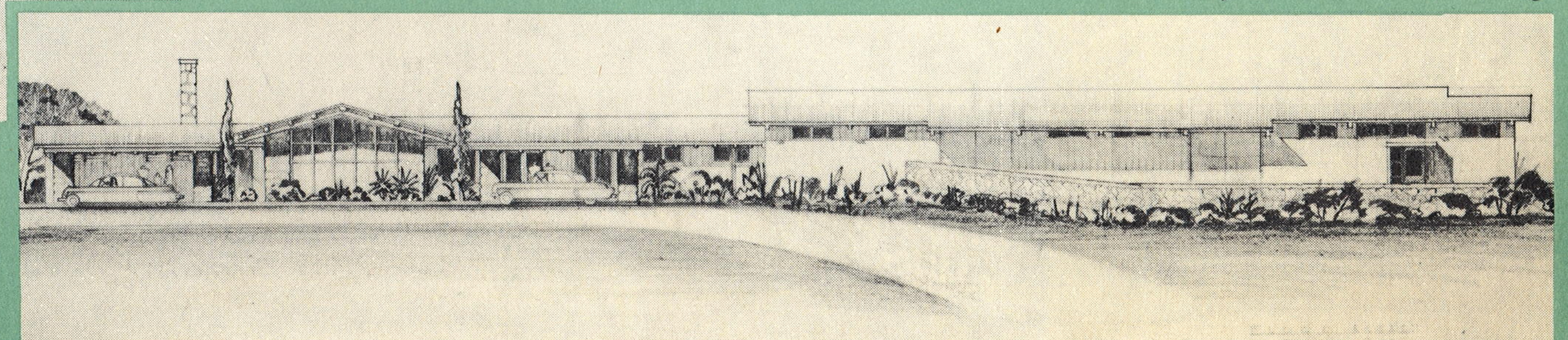
General Lyman Field	Kamuela Airport
Kona Airport	Upolu Airport
Lihue Airport	Port Allen Airport
Molokai Airport	Kalaupapa Airport
Lanai Airport	Hana Airport
	Kahului Airport

- **Summary of Inter-Island Passenger Traffic, Air Cargo, and Air Mail**

- **Inter-Island Passenger Traffic**



building.  
(planned alterations.)



Kamuela Airport terminal building.



## General Lyman Field

LAND AREA .....	650 acres
RUNWAYS	
3-21 .....	200' x 5,600'
8-26 .....	200' x 6,500'
AIRCRAFT OPERATIONS .....	46,667
PASSENGER TRAFFIC .....	177,834
AIR CARGO .....	7,696,960 lb.
AIR MAIL .....	357,217 lb.

### The Construction Story

Initial Land Acquisition .....	Territorial Land
Completed Projects	
Rehabilitation of Roads and Runways .....	\$ 30,500
Protective Fencing .....	26,282
New Terminal & Administration Building .....	381,856
Parking Aprons, Access Roads, Ramps and Auto Parking .....	293,244
High Intensity Lighting System, Runway 8-26 .....	176,677
Freight Terminal Building .....	110,957
Private Plane Hangars (Unit #1) .....	20,119
Landscaping .....	9,492
Taxiway Entrance Lights .....	5,393
Miscellaneous Projects .....	78,453
Projects Under Construction	
Private Plane Hangar (Unit #2) .....	20,000
Projects in the Planning Stage	
Medium Intensity Lighting System, Reconstruction of Runway 3-21, additional taxiways and Drainage System .....	600,000

## Kamuela Airport

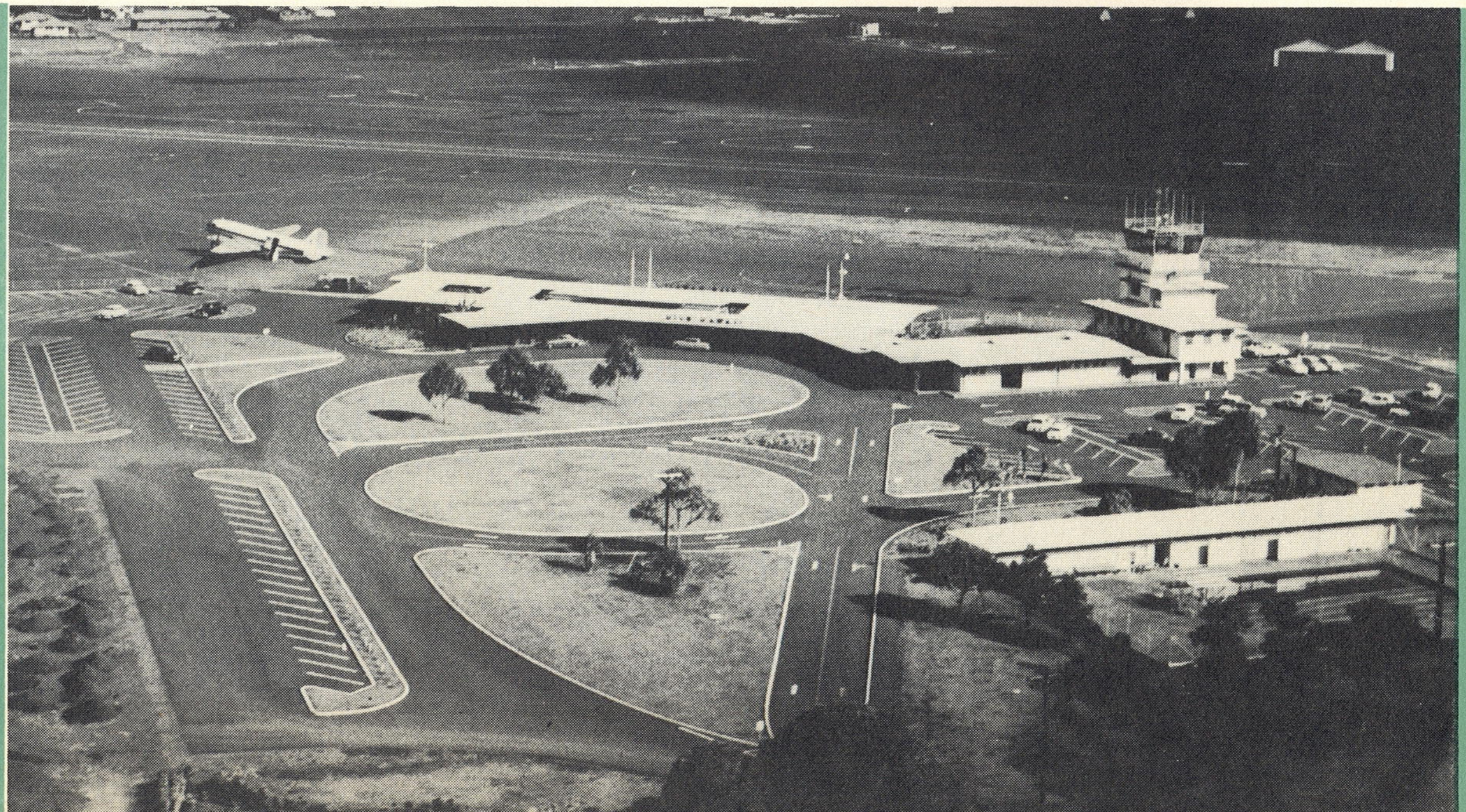
LAND AREA .....	90 acres
RUNWAY	
4-22 .....	100' x 5,200'
PASSENGER TRAFFIC .....	7,676
AIR CARGO .....	1,800,389 lb.
AIR MAIL .....	2,498 lb.



### The Construction Story

Initial Land Acquisition .....	\$ 7,000
Completed Projects	
Construction of New Airstrip and Runway .....	839,301
Passenger and Freight Terminal Building .....	102,813
Miscellaneous Projects .....	3,459
Projects in the Planning Stage	
Medium Intensity Lighting—Runway 4-22 .....	60,000

**Hilo Airport terminal building  
seen from the air.**







## Kona Airport

LAND AREA .....	120 acres
RUNWAY	
11-29 .....	100' x 3,800'
PASSENGER TRAFFIC .....	51,237
AIR CARGO .....	1,446,210 lb.
AIR MAIL .....	24,336 lb.

### The Construction Story

Initial Land Acquisition .....	\$ 11,860
Additional Land Purchased .....	8,601
Completed Projects	
Construction of New Airstrip and Runway .....	309,150
Additional Taxiways, Parking Aprons and Other Paved Areas .....	166,411
Water System .....	12,000
Passenger Terminal Building .....	33,529
Freight Terminal Building .....	20,137
Private Plane Hangars .....	26,243

## Upolu Airport

LAND AREA .....	95 acres
RUNWAY	
7-25 .....	150' x 4,000'
PASSENGER TRAFFIC .....	8,272
AIR CARGO .....	531,760 lb.
AIR MAIL .....	5,987 lb.



### The Construction Story

Initial Land Acquisition .....	Territorial Land
Completed Projects	
Passenger Terminal .....	\$ 27,433
Repaving and Resurfacing of Runway & Apron .....	54,581



Terminal building, Kona Airport.



Upolu Airport Building.

LIHUE AIRPORT

## Lihue Airport



LAND AREA .....	153 acres
RUNWAY	
3-21 .....	100' x 5,100'
AIRCRAFT OPERATIONS .....	13,548
PASSENGER TRAFFIC .....	153,542
AIR CARGO .....	4,146,238 lb.
AIR MAIL .....	119,694 lb.

### The Construction Story

Initial Land Acquisition .....	\$ 100,017
Additional Land Purchased .....	6,382
Completed Projects	
Construction of Airstrip and Paved Runway .....	426,233
Additional Taxiways and Parking Aprons .....	252,621
Extension of Runway to 5,100 ft. ....	183,420
Water System .....	55,564
Passenger Terminal Building .....	97,223
Alteration and Extension to Passenger Terminal .....	110,122
Freight Terminal Building .....	23,662
T-Hangars .....	15,767
Medium Intensity Runway Lighting System .....	68,059
Landscaping .....	2,541
Miscellaneous Projects .....	6,510
Projects Under Construction	
New Covered Walkway, Baggage Counter and Drainage .....	45,748
Resurfacing Runway and Other Paved Surface .....	8,200

## Port Allen Airport

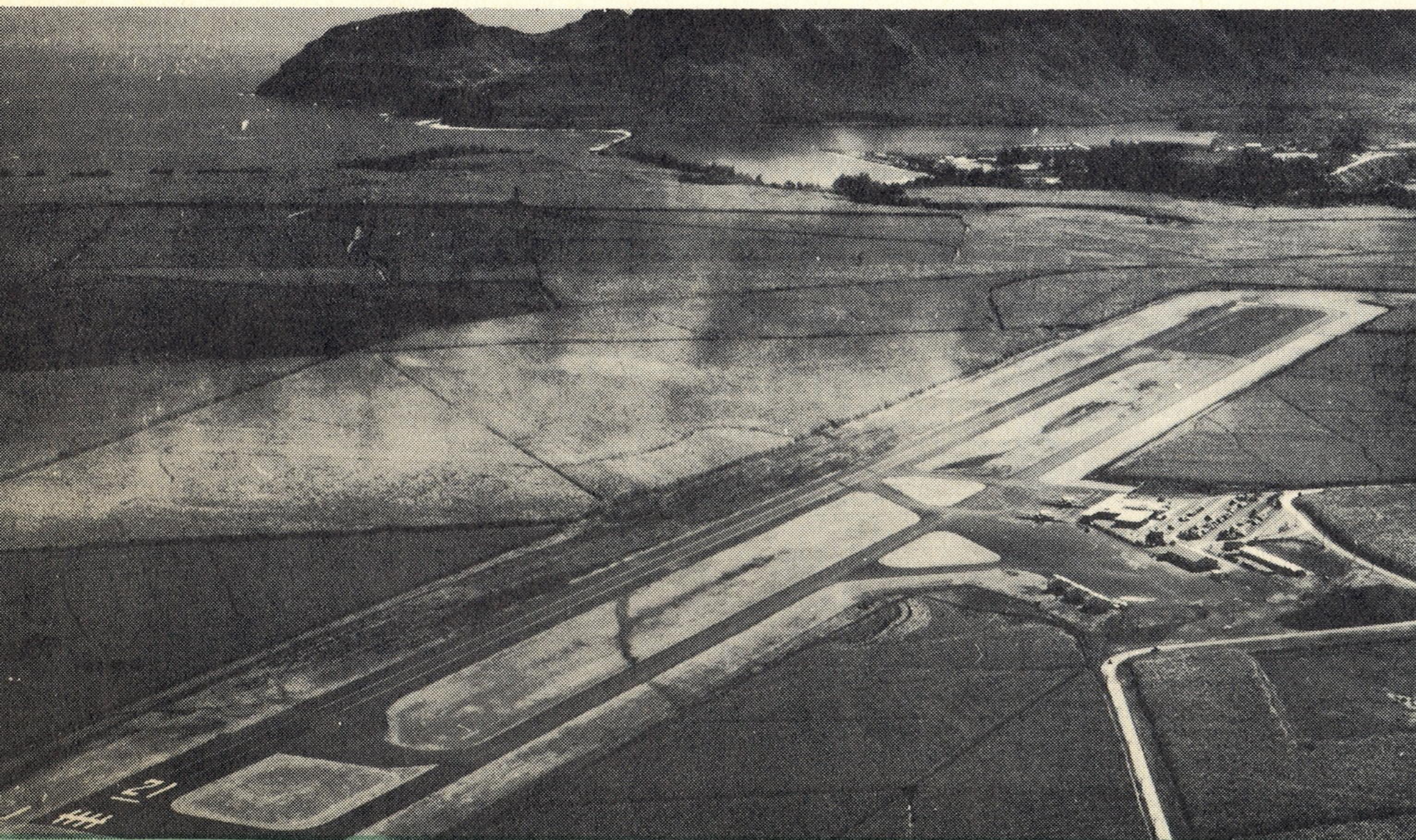
PORT ALLEN AIRPORT



LAND AREA .....	180 acres
RUNWAYS	
9-27 .....	60' x 2,500'
5-23 .....	100' x 2,600'
PASSENGER TRAFFIC	
AIR MAIL	
AIR CARGO	
ACTIVITY .....	Private flying

### The Construction Story

Initial Land Acquisition .....	Territorial Land
Completed Projects	
Rehabilitation of Runways .....	\$ 33,457



Aerial view of Lihue Airport



Lobby, Lihue terminal building.

MOLOKAI AIRPORT

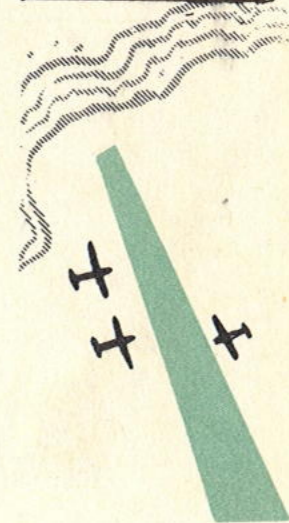


## Molokai Airport

LAND AREA .....	288 acres
RUNWAYS	
5-23 .....	100' x 4,500'
17-35 .....	100' x 3,100'
PASSENGER TRAFFIC .....	45,936
AIR CARGO .....	1,091,516 lb.
AIR MAIL .....	44,367 lb.

## Kalaupapa Airport

KALAUPAPA AIRPORT



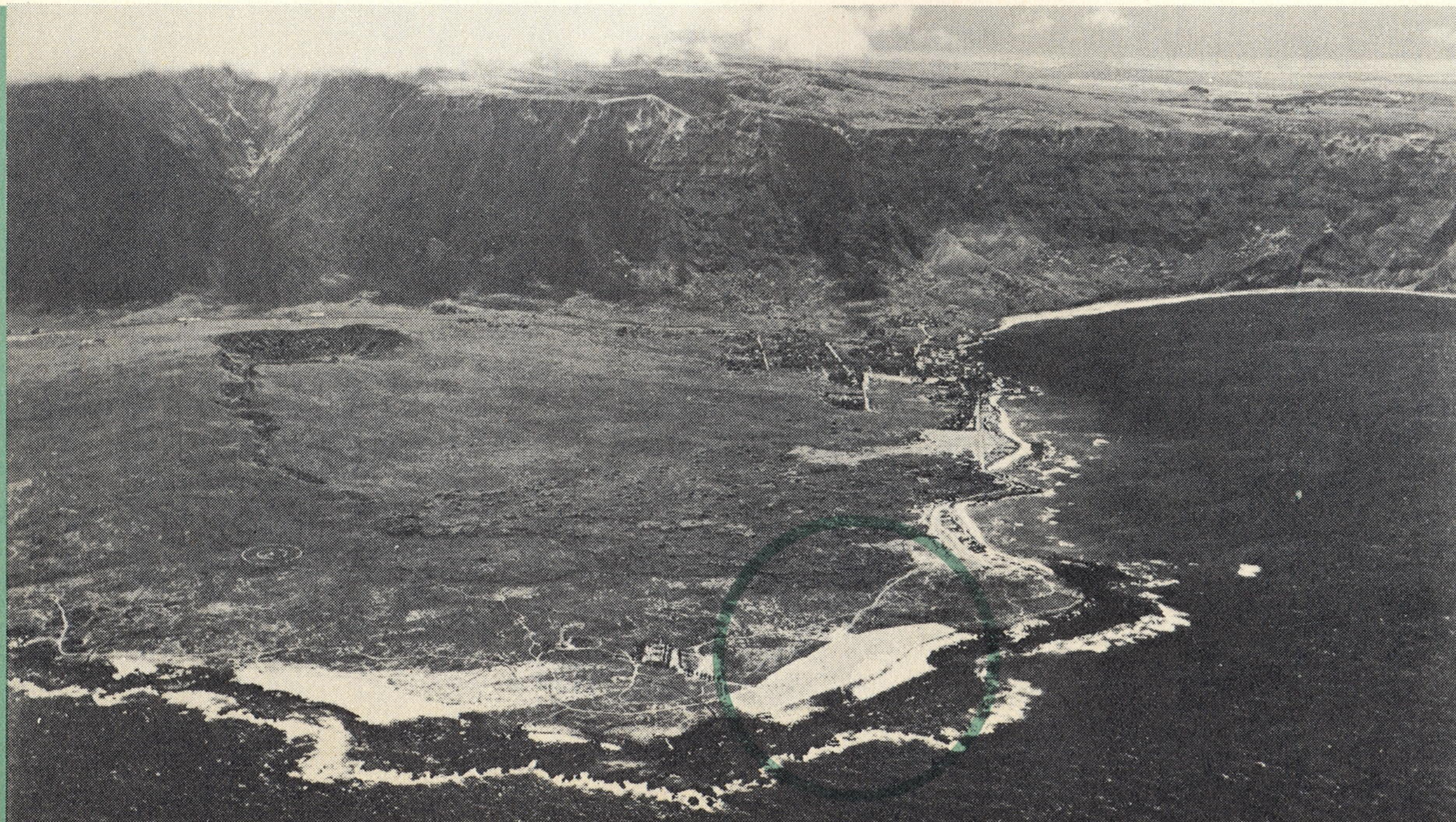
LAND AREA .....	17 acres
STRIP	
5-23 .....	100' x 2,650'
PASSENGER TRAFFIC .....	2,267
AIR CARGO .....	479,348 lb.
AIR MAIL .....	34,734 lb.

### The Construction Story

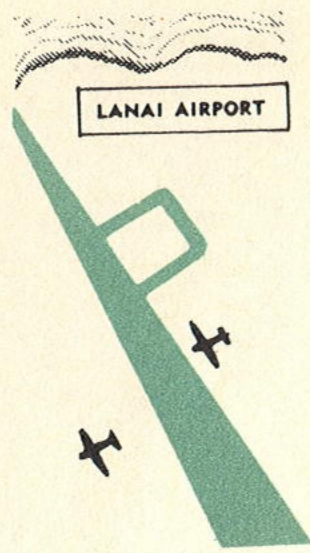
Initial Land Acquisition .....	Territorial Land
Completed Projects	
Drainage System .....	\$ 29,460
Resurfacing Runways and Taxiways .....	25,309
Miscellaneous Projects .....	5,465
Projects in the Planning Stage	
Passenger and Freight Terminal Building .....	90,000
Medium Intensity Runway Lighting .....	72,000
Parking Apron, Roadways and Auto Parking Area .....	85,000

### The Construction Story

Initial Land Acquisition .....	Territorial Land
Completed Projects	
Construction of Paved Runway and Apron .....	\$ 65,162
Passenger Terminal Building .....	4,772



**Kalaupapa Airport from the air—  
Cliffs in the background cut the  
peninsula off so that air is the  
only mode of travel.**



## Lanai Airport

LAND AREA .....	59 acres
RUNWAY	
3-21 .....	80' x 3,700'
PASSENGER TRAFFIC .....	17,599
AIR CARGO .....	1,492,720 lb.
AIR MAIL .....	11,924 lb.

## Hana Airport

LAND AREA .....	125 acres
RUNWAY	
8-26 .....	100' x 3,600'
PASSENGER TRAFFIC .....	8,446
AIR CARGO .....	207,719 lb.
AIR MAIL .....	5,548 lb.



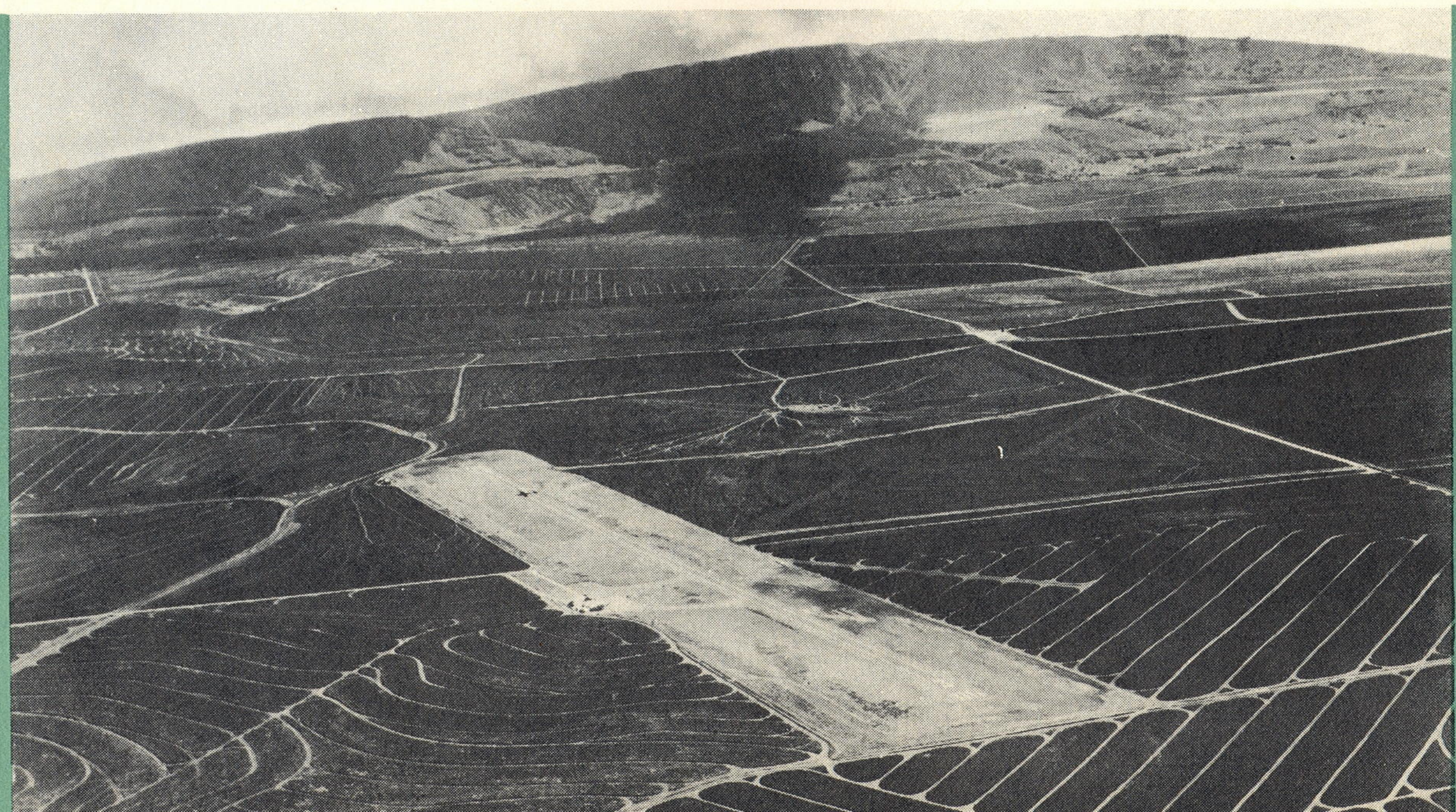
### The Construction Story

Initial Land Acquisition .....	Private Donation
Completed Projects	
Initial Construction of Airstrip by DPW in 1946 .....	\$ 48,556
Paving of Runway and Construction of Taxiway and Apron .....	271,950
Construction of Run-up Strip .....	28,419
Freight Terminal Building .....	13,909
Projects Under Construction	
Water Line .....	2,000
Resurfacing Runway and Other Paved Areas .....	17,000

### The Construction Story

Initial Land Acquisition .....	Territorial Lands and Private Donation
Completed Projects	
Construction of New Airstrip .....	\$ 242,718
Paving of Runways and Aprons .....	176,442
Passenger Terminal and Freight Buildings .....	21,730
Projects in the Planning Stage	
Remodeling of Passenger Terminal .....	3,500
Drainage and Flood Control, Entrance Road .....	1,300

**Lanai Airport, surrounded by pineapple fields.**





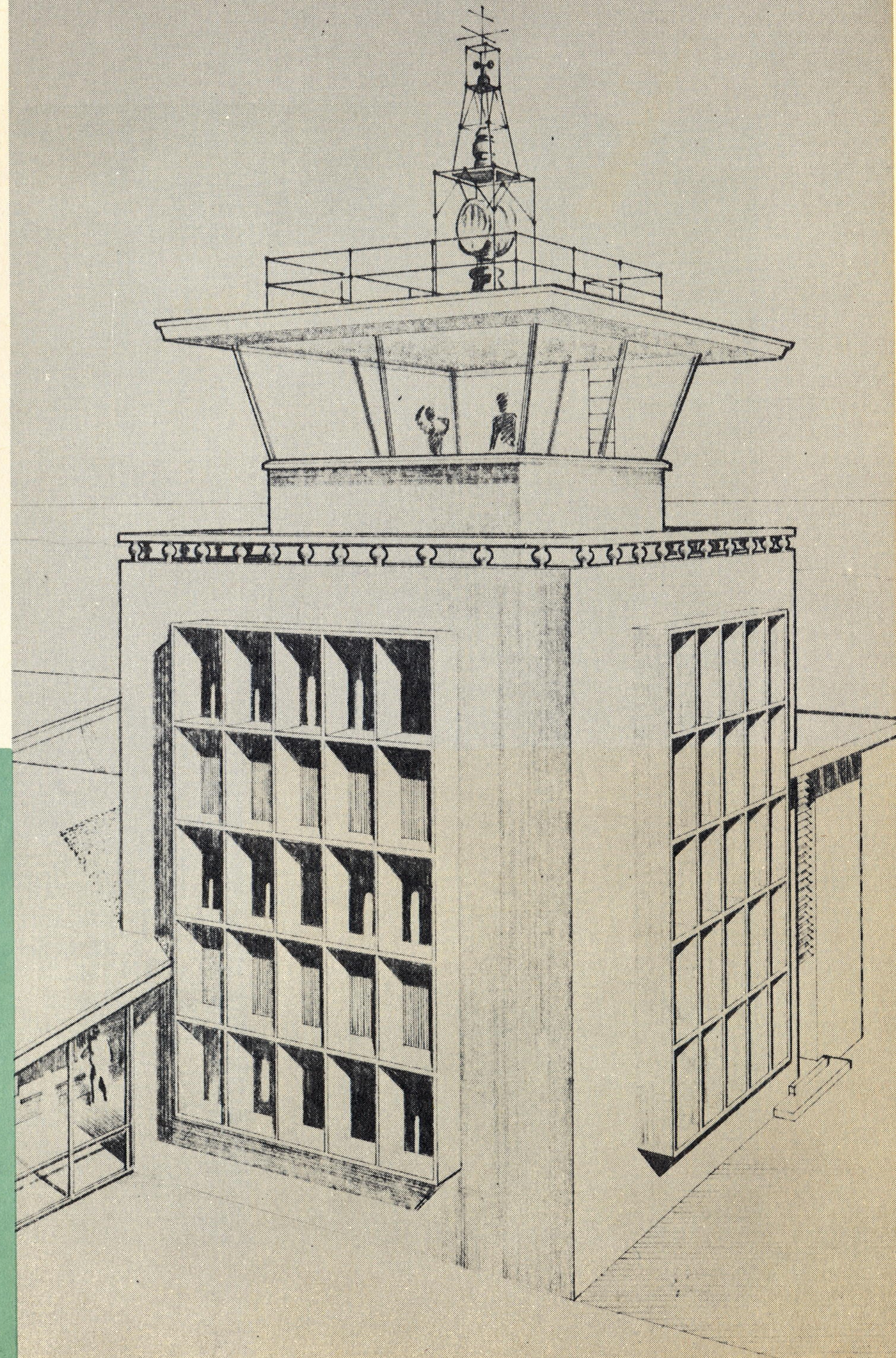
## Kahului Airport

LAND AREA .....	1,341 acres
RUNWAYS	
2-20 .....	200' x 7,000'
5-23 .....	300' x 5,000'
17-35 .....	200' x 5,000'
AIRCRAFT OPERATIONS .....	28,622
PASSENGER TRAFFIC .....	181,203
AIR CARGO .....	6,716,789 lb.
AIR MAIL .....	158,915 lb.

### The Construction Story

Initial Land Acquisition .....	U. S. Navy
Completed Projects	
Temporary Passenger Terminal Building and Facilities ..	\$ 93,421
Temporary Freight Terminal Building and Facilities ....	19,075
Temporary Control Tower .....	12,100
Private Plane Hangars .....	7,050
Landscaping .....	6,477
Miscellaneous Projects .....	25,930

**Architectural rendering of proposed control tower, Kahului Airport.**



# SUMMARY OF INTER-ISLAND PASSENGER

Fiscal Year July 1, 1954

From:	To:											
	Honolulu	Hilo	Upolu	Kamuela	Kona	Kahului	Hana	Molokai	Kalau-papa	Lanai	Lihue	
<b>HONOLULU</b>												
Passengers	259,063	—	66,091	3,873	3,539	16,967	66,922	3,520	16,504	876	5,274	75,497
Air Cargo (lbs.)	14,125,258	—	3,790,557	220,593	200,309	721,410	3,717,664	168,325	660,004	346,394	909,230	3,390,772
Air Mail (lbs.)	345,674	—	130,667	2,094	472	12,298	78,780	2,208	17,033	26,879	6,704	68,539
<b>HILO</b>												
Passengers	83,868	64,333	8,412*	21	—	2	10,536	60	173	—	18	313
Air Cargo (lbs.)	3,615,267	3,171,962	—	336	—	567	259,016	799	19,433	—	135,201	27,953
Air Mail (lbs.)	225,957	225,831	—	—	—	—	126	—	—	—	—	—
<b>UPOLU</b>												
Passengers	4,244	3,921	9	—	—	2	297	—	10	5	—	—
Air Cargo (lbs.)	301,274	270,169	320	—	—	—	26,822	—	1,055	—	853	2,055
Air Mail (lbs.)	3,893	3,868	—	—	—	—	25	—	—	—	—	—
<b>KAMUELA</b>												
Passengers	4,041	3,700	6	—	—	—	332	—	3	—	—	—
Air Cargo (lbs.)	1,596,302	1,583,179	2	—	—	—	11,086	—	1,491	—	493	51
Air Mail (lbs.)	2,026	2,026	—	—	—	—	—	—	—	—	—	—
<b>KONA</b>												
Passengers	30,764	28,322	—	—	1	—	2,090	2	2	—	—	347
Air Cargo (lbs.)	695,661	674,991	241	—	—	—	9,204	9	7,664	—	672	2,880
Air Mail (lbs.)	11,489	10,961	—	—	—	—	509	—	—	—	19	—
<b>KAHULUI</b>												
Passengers	91,016	59,384	18,637	121	92	3,264	—	674	5,420	15	3,076	333
Air Cargo (lbs.)	2,569,420	1,877,057	230,730	8,984	2,903	21,897	—	5,152	76,506	8,600	290,785	46,806
Air Mail (lbs.)	67,484	62,996	593	—	—	549	—	626	2,720	—	—	—

# TRAFFIC, AIR CARGO AND AIR MAIL

to June 30, 1955

To:

From:		Honolulu	Hilo	Upolu	Kamuela	Kona	Kahului	Hana	Molokai	Kalau- papa	Lanai	Lihue
<b>HANA</b>												
Passengers	4,149	3,200	98	—	—	71	736	—	44	—	—	—
Air Cargo (lbs.)	33,040	27,942	2,492	90	—	—	1,146	—	1,370	—	—	—
Air Mail (lbs.)	2,714	2,631	—	—	—	—	83	—	—	—	—	—
<b>MOLOKAI</b>												
Passengers	22,936	16,148	295	8	3	—	5,725	41	—	194	484	38
Air Cargo (lbs.)	316,561	166,878	38,936	205	777	3,534	41,575	324	—	50,643	10,557	3,132
Air Mail (lbs.)	24,614	12,764	—	—	—	—	11,850	—	—	—	—	—
<b>KALAU-PAPA</b>												
Passengers	1,177	846	—	5	—	—	20	—	306	—	—	—
Air Cargo (lbs.)	73,711	73,561	—	—	—	—	—	—	150	—	—	—
Air Mail (lbs.)	7,855	7,855	—	—	—	—	—	—	—	—	—	—
<b>LANAI</b>												
Passengers	8,747	5,140	92	—	—	1	3,014	—	497	—	—	3
Air Cargo (lbs.)	144,837	100,016	4,635	144	52	2,268	32,764	27	4,389	—	—	542
Air Mail (lbs.)	5,201	5,143	—	—	—	—	58	—	—	—	—	—
<b>LIHUE</b>												
Passengers	77,011	75,963	326	—	—	166	515	—	41	—	—	—
Air Cargo (lbs.)	672,047	606,094	13,780	134	46	873	48,092	43	2,893	—	92	—
Air Mail (lbs.)	51,155	51,155	—	—	—	—	—	—	—	—	—	—
<b>TOTALS</b>												
Passengers	587,016	260,957	93,966	4,028	3,635	20,473	90,187	4,297	23,000	1,090	8,852	76,531
Air Cargo (lbs.)	24,143,378	8,551,849	4,081,693	230,486	204,087	750,549	4,147,369	174,679	774,955	405,637	1,347,883	3,474,191
Air Mail (lbs.)	748,062	385,230	131,260	2,094	472	12,847	91,431	2,834	19,753	26,879	6,723	68,539



Above — Children's group returning from an "around the island" excursion.

Below — Tour party departing Honolulu for a trip to the neighbor islands.



## Summary of Inter-Island Passenger Traffic, Cargo, and Air Mail All Airports

Fiscal Year July 1, 1954 to June 30, 1955

		Passengers	Cargo Pounds	Air Mail Pounds
1954	July	61,441	2,672,539	51,162
	August	68,240	2,213,205	52,403
	September	45,428	1,883,985	52,209
	October	41,810	1,879,832	53,498
	November	38,958	1,840,366	55,413
	December	45,353	2,206,770	117,731
1955	January	44,201	1,825,956	51,088
	February	38,367	1,679,999	53,712
	March	52,343	1,914,432	61,434
	April	50,605	1,959,595	74,531
	May	44,262	2,051,229	66,104
	June	56,008	2,015,470	58,777
<b>TOTALS</b>		<b>587,016</b>	<b>24,143,378</b>	<b>748,062</b>
1953-54 Fiscal Year Totals		570,263	23,261,642	736,075
Percent gain		2.9	3.8	1.6





# STATEMENT OF INCOME AND EXPENDITURES

FISCAL YEAR ENDING JUNE 30, 1955

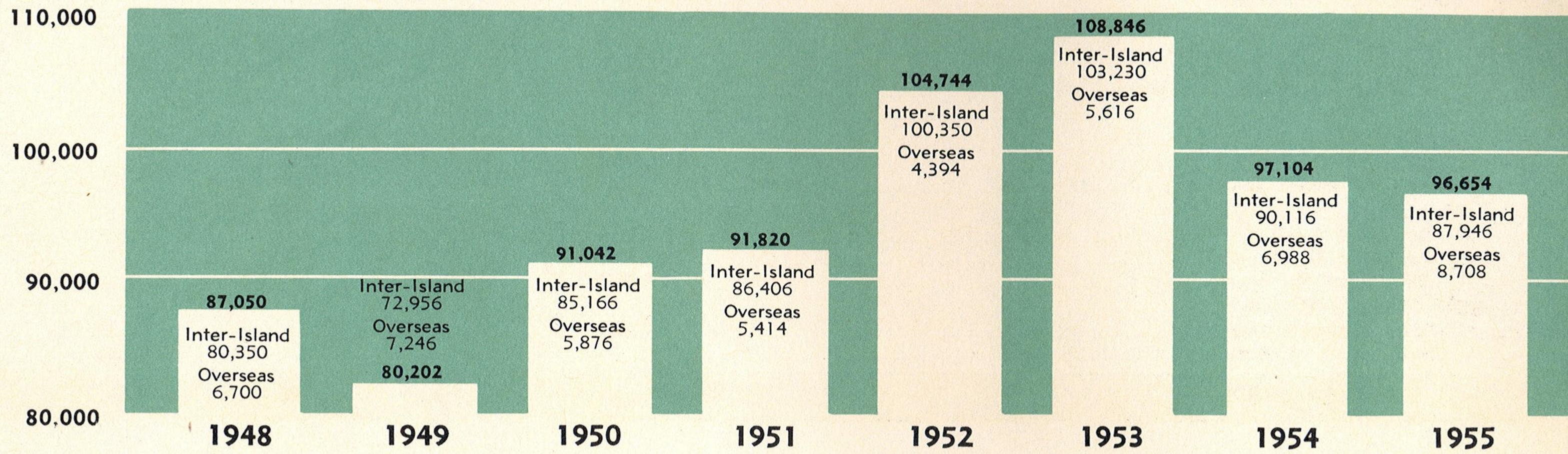
	Total All Funds	Fuel Tax Fund S-7161	Revenue Fund S-7169	Federal Grants	Loan Fund Appr'n.	General Fund Appr'n.
OPENING BALANCE, July 1, 1954	\$2,306,458	\$1,632,340	\$ 53,052	\$ -----	\$599,873	\$21,193
<b>INCOME</b>						
<b>OPERATING INCOME</b>						
<b>Aeronautical Revenues</b>						
Fuel Tax Collections	827,921	827,921	-----	-----	-----	-----
Landing Fees	66,089	-----	66,089	-----	-----	-----
Rental of Land	22,523	-----	22,523	-----	-----	-----
Rental of Buildings & Hangars	131,680	-----	131,680	-----	-----	-----
Sale of Aviation Fuel	2,851	-----	2,851	-----	-----	-----
<b>Ancillary Revenues</b>						
Concession Fees	128,430	-----	128,430	-----	-----	-----
Parking Meter Collections	13,475	-----	13,475	-----	-----	-----
<b>Non-Aeronautical Revenues</b>						
Rental of Land	32,102	-----	32,102	-----	-----	-----
Rental of Buildings	196,473	-----	196,473	-----	-----	-----
Other Fees & Income	54,929	-----	54,929	-----	-----	-----
<b>NON-OPERATING INCOME</b>						
Federal Grants Received	83,362	-----	-----	83,362	-----	-----
Refunds, Transfers, etc.	24	22	2	-----	-----	-----
<b>TOTAL INCOME</b>	<b>1,559,859</b>	<b>827,943</b>	<b>648,554</b>	<b>83,362</b>	-----	-----
<b>EXPENDITURES</b>						
<b>CURRENT EXPENDITURES</b>						
Salaries & Wages	551,897	320,946	230,951	-----	-----	-----
Other Current Expenses	332,718	10	332,708	-----	-----	-----
Aviation Fuel Purchased for Resale	2,230	-----	2,230	-----	-----	-----
Inventories & Other Prepaid Expenses	19,639	-----	19,639	-----	-----	-----
Equipment	42,840	-----	42,840	-----	-----	-----
<b>CAPITAL EXPENDITURES</b>						
Land, Buildings, & Construction Projects	384,369	294,685	898	83,362	5,424	-----
<b>BOND REDEMPTION PAYMENTS</b>						
	32,989	-----	32,989	-----	-----	-----
<b>TOTAL EXPENDITURES</b>	<b>1,366,682</b>	<b>615,641</b>	<b>662,255</b>	<b>83,362</b>	<b>5,424</b>	-----
LAPSED TO TERRITORIAL GENERAL FUND	21,193	-----	-----	-----	-----	21,193
CLOSING BALANCES AT JUNE 30, 1955	2,478,442	1,844,642	39,351	—0—	594,449	—0—
<b>ENCUMBRANCES</b>						
Unliquidated Contract Encumbrances	210,442	206,042	-----	-----	4,400	-----
Other Construction Work-In-Progress	2,034,219	1,525,872	33,822	-----	474,525	-----
<b>TOTAL ENCUMBRANCES</b>	<b>2,244,661</b>	<b>1,731,914</b>	<b>33,822</b>	-----	<b>478,925</b>	-----
<b>NET UNENCUMBERED BALANCES</b>	<b>233,781</b>	<b>112,728</b>	<b>5,529</b>	<b>—0—</b>	<b>115,524</b>	<b>—0—</b>



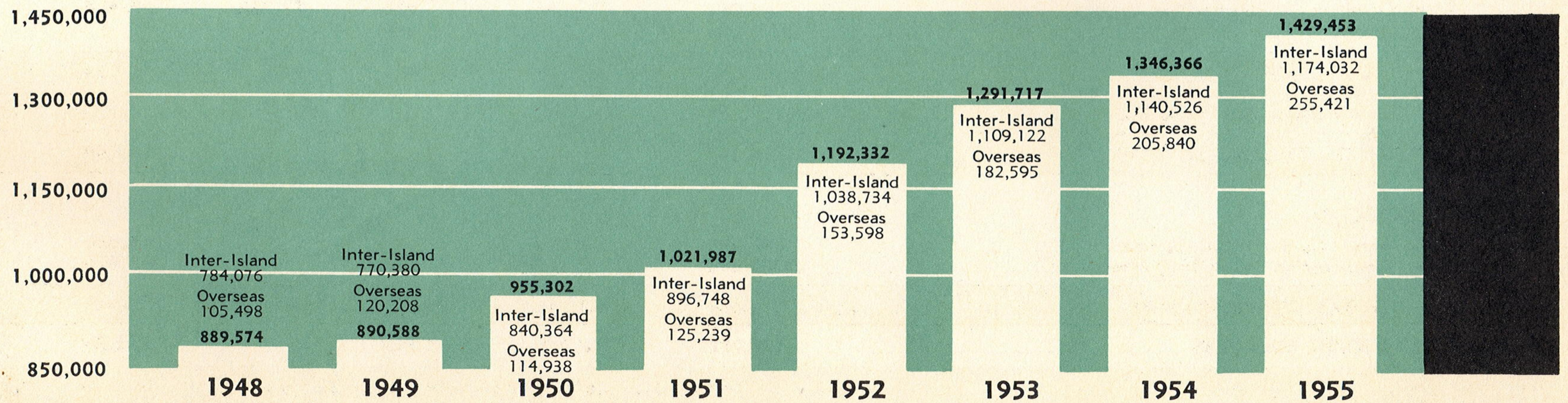
# TRENDS, COMPARATIVE TRAFFIC



## AIR CARRIER OPERATIONS



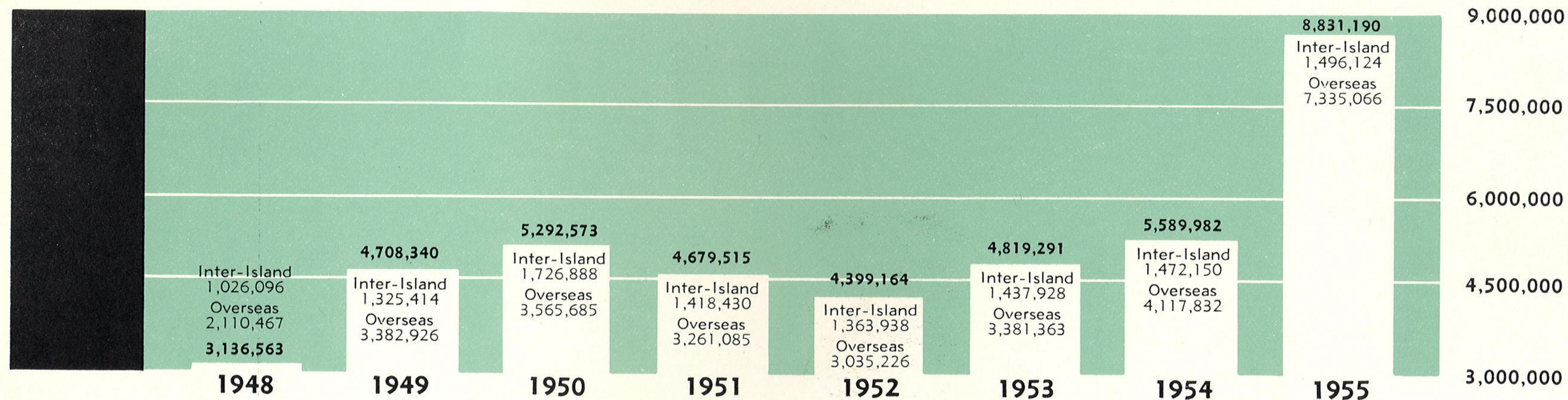
## PASSENGERS



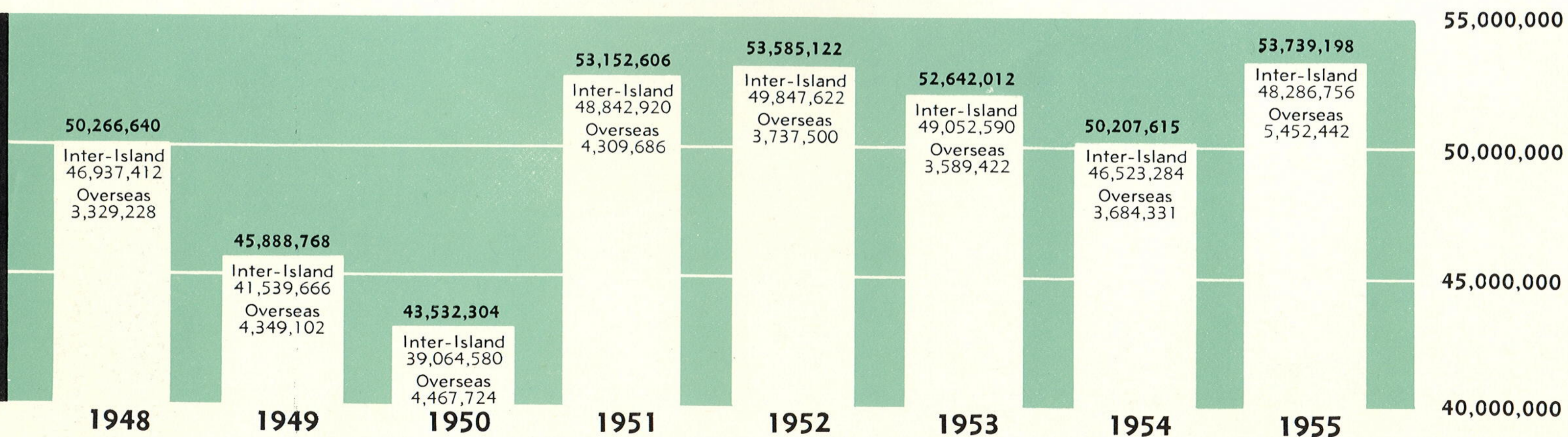
# VOLUME HANDLED BY ALL AIRPORTS



## AIR MAIL (pounds)



## AIR CARGO (pounds)



Above figures represent outgoing and incoming totals for inter-island traffic, and outgoing, incoming and through totals for overseas traffic. Air carrier operations include take-offs and landings.



HAWAII AERONAUTICS COMMISSION