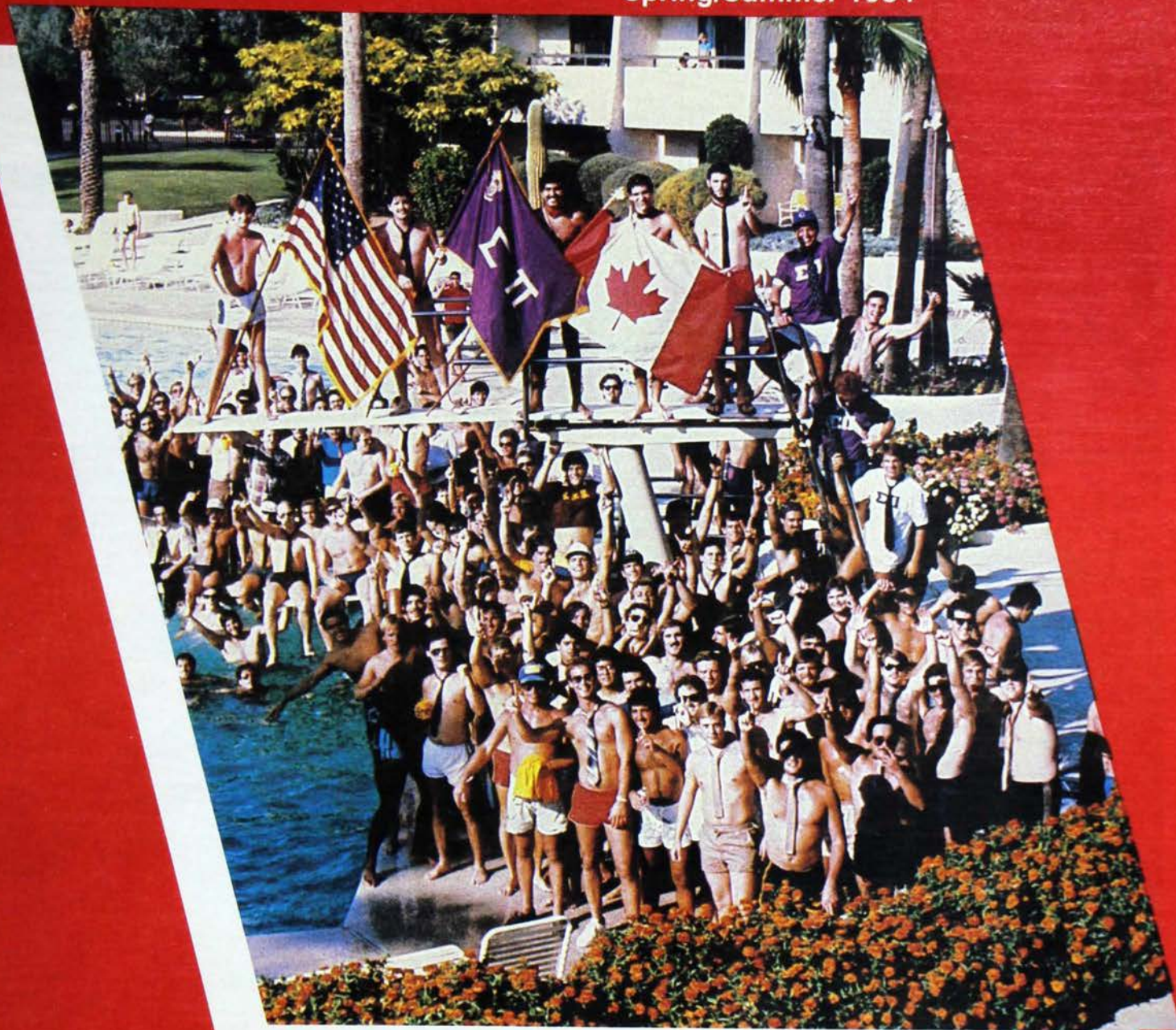


# THE EMERALD

OF SIGMA PI FRATERNITY

Spring/Summer 1984



*Sigma Pi Goes International*

# CONVOCATION '84



## SIGMA PI FRATERNITY CONVOCATION '84 SCOTTSDALE, ARIZONA



Conquering New Frontiers—Brothers from around the United States and Canada united in Scottsdale, Arizona Aug. 8-12 to officially proclaim Sigma Pi an international fraternity. The Convocation proved to be one of the biggest and best Convocations in the history of the Fraternity.



# THE EMERALD

OF SIGMA PI FRATERNITY

## Contents

---

Spring/Summer 1984

- 4 **Sigma Pi Goes International**
- 16 **Sigma Pi Sports**
- 18 **Loyalty Fund Contributors**
- 23 **Alumni Club News**
- 24 **The Empty Chair**
- 31 **Sigma Pi Wish List**

## Departments

---

- 6 **Chapter News**
- 30 **Etc . . .**

**Editor**  
George Sansoucy

**Assistant Editor**  
E. Andrew Morris

**Editor Emeritus**  
Louis Foley

*The Emerald* of Sigma Pi is the official publication of Sigma Pi Fraternity. *The Emerald* is published four times yearly: fall, winter, spring and summer.

Unless specially identified as such, statements made or opinions expressed in this publication are those of the writer and do not necessarily represent the opinions or policies of Sigma Pi Fraternity or its members.



Sigma Pi is a member of the College Fraternity Editors Association

C

onvocation '84, held in beautiful Scottsdale, Arizona Aug. 8-12, proved to be one of the biggest and best convocations in the history of the Fraternity. Brothers from around the United States and Canada united in record numbers to officially proclaim Sigma Pi an international fraternity, thus underscoring the Convocation's theme of "Conquering New Frontiers."

A lot of lumped throats and misty eyes accompanied Sigma Pi's history-making move at Convocation to become an international fraternity. Congratulations and best wishes are in order for our flag-carrying Canadian Colony President Dave Spence, who helped make it

possible to extend the brotherhood across borders.

Three men were initiated at Convocation: **Alan Taliaferro** (University of Florida), **Clayton Thomson** and **Jeff Biondi** (both of University of Nevada, Reno). These brothers were the first to be initiated under Sigma Pi INTERNATIONAL.

By extending the brotherhood over national borders, Sigma Pi Fraternity

It's official—Past Grand Sage **Gary B. Tash** congratulates Canadian Colony President **Dave Spence** after the brotherhood officially proclaimed Sigma Pi an international fraternity.



## SIGMA PI FRATERNITY CONVOCATION '84 SCOTTSDALE, ARIZONA





joins a small, but prestigious group of other international fraternities. Other changes made at Convocation that should be noted include:

- A \$5 increase for both the Sigma Pi pledge (now \$45) and initiate (now \$85) fees. The increase covers the cost of the Sigma Pi membership badge, which will automatically be presented to properly reported initiates upon initiation.
- Undergraduate dues increase to \$15 per man ONLY for chapters delinquent on paying the dues (deadlines: Oct. 31 and March 31). Chapters which meet the deadlines will continue to pay the regular dues of \$12.50 per man.
- Area Directors of Sigma Pi Fraternity will once again be known as Province Archons of the Fraternity. Province Archon assignments will be made by new Grand Sage Eli Sidwell.

#### NEW GRAND COUNCIL

Sigma Pi Fraternity can look forward to another biennium of growth and prosperity as our great Fraternity continues its tradition of strong leadership with its new Grand Council:

- Grand Sage **Eli R. Sidwell, Jr.** Beta-Gamma, Eastern Illinois University
- Grand Second Counselor **John J. Merino, Jr.** Beta-Omicron, California State - Long Beach
- Grand Third Counselor **Gregory J. Evans** Beta-Phi, Rochester Institute of Technology

#### THE SIGMA PI FOUNDATION BOARD OF DIRECTORS

- Chairman **Howard L. Vierra** Beta-Eta, San Jose State University, Calif.
- Vice-Chairman **Robert A. Prichard** Rho, North Carolina State University, Raleigh
- Secretary **E. Andrew Morris** Gamma-Upsilon, Murray State University, Ky.
- Treasurer **David L. Walsh** Beta-Phi, Rochester Institute of Technology, N.Y.
- Howard H. Beyer** Alpha-Mu, New Jersey Institute of Technology
- Charles S. Bickler** Theta, Pennsylvania State University
- Jack C. Fields** Epsilon-Gamma, Illinois Wesleyan University
- Robert L.C. Merriman** Alpha-Rho, Southwest Missouri State University
- James W. Reid** Beta-Pi, University of Virginia

#### THE BYRON R. LEWIS EDUCATIONAL FUND BOARD OF DIRECTORS

- President **Harold Jacobsen** Lambda, Kenyon College, Ohio
- Vice President **Darrell L. Spriggs** Alpha-Sigma, University of Arkansas
- Secretary **Ed R. McClane** Beta-Gamma, Eastern Illinois University
- Assistant Secretary **E. Andrew Morris** Gamma-Upsilon, Murray State University, Ky.
- Treasurer **D. Dean Crook** Beta-Gamma, Eastern Illinois University

---

# Sigma Pi Goes International

---

- Grand Fourth Counselor **Lyndell R. Cummins** Alpha-Iota, University of Missouri—Rolla
- Grand First Counselor **Dennis V. Day** Alpha-Rho, Southwest Missouri State University
- Grand Herald **Mark A. Metz** Epsilon-Zeta, Western Illinois University
- Past Grand Sage **Gary B. Tash** Beta-Pi, University of Virginia

- Ward Ashman** Gamma, Ohio State University
- Richard Barnard** Delta-Gamma, Milton College
- Bruce L. Peterson** Upsilon, University of California, Los Angeles
- Alexander E. Wilson, Jr.** Psi, Emory University

(Continued on page 28)

# Chapter News

## VINCENNES UNIVERSITY

**A** February 26, 1897

Vincennes, Ind.—For the second consecutive year Sigma Pi is intramural basketball and softball champs at Vincennes University. Thanks to **Dean Eldred**, intramural director, for a great effort in organizing the teams and keeping Sigma Pi tops in intramural sports.

Sigma Pi and McDonalds of Vincennes raised money in a new frisbee-athon for Multiple Sclerosis. The event was enjoyed by all.

Alpha is in the process of obtaining a new house located at the corner of Second and Locust streets in Vincennes. The property was formerly owned by Judge **Curtis Shake**, one of Sigma Pi's greatest alums. Brother **Shake** was the presiding judge at the Nazi war trials.

### UNDERGRADUATES:

Thanks to Brother **Mark Fischer** for organizing **Arnold's Last Supper** (hog roast). It was a great success! Thanks **Delta-Nu** and **Beta-Tau** for attending.

### ALUMNI:

Thanks to all alumni who contributed during a recent telethon to raise money for new furniture. Thanks also alumni for a fantastic turnout at **Founders' Day '84**. **Alpha Grams** will start again in the fall.

## OHIO STATE UNIVERSITY

**Γ** June 6, 1908

Columbus, Ohio—This has been a busy year for Gamma. The chapter initiated 13 pledges, the house has been improved and another phenomenal formal was held. Philanthropically Sigma Pi had its second annual **Lot Party for Multiple Sclerosis**. The basketball team went undefeated, winning Gamma its second consecutive trophy and championship.

### UNDERGRADUATES:

Congratulations to Brother **Scott Provost** for receiving a ROTC scholarship. Congrats also to **Rob Wright** for being elected philanthropy chairman of Ohio State's IFC.

### ALUMNI:

Newsletters have been sent out, if you have not received one please send your name and address to Sigma Pi, 48 East 15th Street, Columbus, Ohio, 43201.

## PURDUE UNIVERSITY

**H** June 8, 1912

West Lafayette, Ind.—Eta has been working hard this semester. The most noteworthy events have been the **Sigma Pi 50-Hour Pole Sit for Multiple Sclerosis** and the **Purdue Annual Grand Prix**.

**Pole Sit** was very successful. Money for **MS** has not yet been determined, because donations are still coming in.

Purdue's annual **Grand Prix** was held the last weekend in April. Unfortunately **Sigma Pi's** cart was sabotaged and unable to compete in the race. Eta thanks Brother **Andy Blacker** for putting enormous amounts of time, money and effort into the cart.

### UNDERGRADUATES:

Congratulations to Eta's recently graduated seniors: **Francis Innis III, Randy Jones, Thomas Taivalkoski, Thomas Shaw, Timothy Torrance, Christopher Landers, Charles Smith and Louis Maillott**. Brother **Louis** was seriously injured/paralyzed last spring, but is now walking. No hope was given for him to ever walk again. Other outstanding undergrads include **Bill Bush** and **Andy Wallace** who competed at **NRA** nationals at **Colorado Springs** in April.

### ALUMNI:

Promotions: **Dennis Dewey '68**, director of pharmacy, **Midwest** division for **Peoples Drug Stores, Inc.**; **H. Ray Ege '60**, president of **Underwriters Safety Device Co.**, division of **Allied Corp.** in **Chicago, Illinois**; **Larry E. Manship '74**, staff engineer for **Amoco Oil** in **New Orleans, Louisiana**, retired; **George Saboff '40** from **Inland Steel**. All of our alumni are outstanding and we thank all alumni who have contributed to the scholarship and new house funds.

## TEMPLE UNIVERSITY

**K** March 13, 1909

Philadelphia, Pa.—Thanks to all the brothers who have made spring '84 a great semester! Congratulations to new Brothers **Bruce Yoshida, Scott Kassman, Ken Acker, Louis Schmuckler and Tim Wentling**. This spring has seen some great renovations take place, most notable the new party room floor.

Kappa Chapter ended its intramural drought by winning this year's softball tournament. Special mention goes to "Marvelous" **Mike Sweeney** for some great defence at shortstop, "Shmoli" **Rector** for some timely hitting and **Ray N. Howt**, a future brother, who played great in the outfield.

Thanks to all alumni and brothers for making **Kappa's 75th anniversary Founders' Day** a great success! Everyone who attended had a great time. Awards presented included: **Sigma Pi Sage's Service Award** Fall '83, **John Rector**; Spring '84, **Dave Madden**; **Scholarship Award**, **Jeff Krulik**; **House Sweetheart**, **Ellen Henry**, **Derelict**, **Steve Manfield**; **Athlete of the Year**, **Mike Sweeney**; **Pledge of the Year**, **John Rector**. **Cheryl Culbertson** received a special award for being selected as **Temple University's** homecoming queen.

**Joe Lamonica** received the **Kappa Key Award** for outstanding service by a graduating senior.

### ALUMNI:

Special thanks to alums **Mike Chelednik** and **Rick Alexander** who recently organized

**Kappa's** new alumni foundation. For information on this call (215) 787-9682.

## UNIVERSITY OF WASHINGTON

**ΑΓ** January 9, 1926

Seattle, Wash.—Alpha-Gamma Chapter was rechartered April 14, 1984 on the University of Washington campus with 52 men, after starting as a colony on Feb. 1, 1983 with 12 men. Presently the chapter is leasing a 27-man house, but hopes are to be in a larger facility soon. Latest **Sigma Pi** accomplishments include a ninth place finish out of 29 in **Greek Week**. The first annual **Sigma Pi** auction for **Multiple Sclerosis** was held on **May 11, 1984**. More than \$1,000 was raised.

### ALUMNI:

**Ivar Haglund** was recently elected port commissioner for **Seattle**.

## AUBURN UNIVERSITY

**ΑΔ** February 26, 1926

Auburn, Ala.—1984 started with a bang as **Alpha-Delta** celebrated **Auburn University's** **Sugar Bowl** win in **New Orleans**. The spirit of **New Orleans** continued as the chapter held its annual fund-raiser "A Night in New Orleans." The event was a tremendous success raising needed money for charity. The past few quarters have provided outstanding pledges and new brothers.

**Alpha-Delta** is now more involved and influential at **Auburn** than ever before. Brothers are involved in leadership positions of all types. Brother **David Shaffer** won by a landslide, student body president of **Auburn University**. **Alpha-Delta's** social calendar has been eventful with socials, lawn parties and the annual "Luau" party. Fall quarter promises to be another action packed football season with alumni reunions, home game band parties, and another fund-raiser in addition to the annual "A Night in New Orleans."

### UNDERGRADUATES:

**Jay Jacobs**, offensive tackle, **Auburn**—third in nation 1983; **Mark Kantor**, **David Shaffer** and **Danny Smith** were selected for international **Who's Who** in **Fraternities and Sororities**. **Mark Kantor** elected business school senator, **Auburn's** **SGA**.

### ALUMNI:

**Cleveland Adams '32**, re-elected president of **Auburn United Way**, re-elected president of **Alpha-Delta's** **Alumni Association**. Brother **Adams** currently serves on many community and city government committees and planning groups.

## UNIVERSITY OF MISSOURI, ROLLA

**ΑΙ** April 29, 1933

The EMERALD of Sigma Pi

Rolla, Mo.—Alpha-Iota had a very eventful spring semester. The chapter's tradition of community service continued with three service projects this semester. Early in the semester thermal mugs were sold with the proceeds going to the Local Organization for Various Emergencies (LOVE). On April 13-14, the chapter collected more than \$3,600 during the Multiple Sclerosis "Miracle Mile." Alpha-Iota's pledge class also did renovation and maintenance work on the home of a local elderly resident.

Socially, there was a great turnout for the annual St. Pat's celebration. More than 40 alumni attended. Greek Week was another good time. Alpha-Iota kept up the good name of Sigma Pi by placing third in overall Greek Week standings. Congratulations go to Sigma Pi's first-place Tug team of **Marty Drebes, Dan Arthur, Jeff Massengil, Jeff Hunninghake** and **Doug Hauk**. Alpha-Iota looks forward to a renewed house in the fall, full of spirit from Convocation. The chapter is currently planning its first-ever retreat for the fall.

#### UNDERGRADUATES:

**Jerry Curless**, St. Pat's Student Knight, was initiated into Theta Tau Omega Service Fraternity. **Tom Burns** and pledge **Tom Buelter** were initiated into Alpha Chi Sigma Honorary. **Dave Scrivens** was initiated into Chi Epsilon Honorary. **Mark Drewes** had a starring role in UMR's spring play and was also initiated into the Theatre Guild. Brother **Larry Tipton** was elected managing editor of UMR's student newspaper. **Dan Ponder** was elected corresponding secretary of Theta Tau Omega. **Keith Mueller** was elected secretary of the Intramural Manager's Association.

**Steve Homoky** won a first-place award in the Rocky Mountain Regional student paper contest. **Fred Baganoff** took second in the UMR Undergraduate Research Competition, he also took second place for his presentation of the research paper. **Keith Mueller** and **Scott Jarus** were initiated into Tau Beta Pi Honorary. **Dave Kleikamp** was initiated into the St. Pat's Board. **John Woytus** and **Keith Mueller** were initiated into Alpha Phi Omega Service Fraternity. Finally, **Brent Babyak, Steve Bunten, Matry Drebes, Jim Hays** and **Scott Jarus** are graduating this semester. Congratulations!

#### ALUMNI:

**Mike Schmidt** was elected to the Rolla City Council. **Matt Baebler** was married to **Kathleen Spruce**. **Dennis Gottman** married **Lolly Doyle**. **Dick** and **Chris Stabo** had a baby boy, **Benjamin Lucas**. **Jerry Smith** and his wife had a boy, **Adam Christopher**. **Tom Briscoe** is now studying for the ministry after completing his MBA and law degrees at Harvard. **Blayne Mayfield** is Alpha-Iota's new chapter director. **Charles R. Schaffer** recently started his own firm, Construction Management Services, Inc. **Tim Adrian** and **Wendy Young** announced their wedding. **Tom** and **Karen Brownnett** had a son, **Andrew Patton**. Congratulations to **W. A. "Andy" Cox**, who was nominated for the Michael P. Carey Award!

## NEW JERSEY INSTITUTE OF TECHNOLOGY

AM November 26, 1938

Newark, N.J.—Once again Alpha-Mu has been active in the Newark community, putting in more than 1,500 service hours over the last two semesters. In the interfraternity leagues, Sigma Pi as always, dominated the football competition, going unscored upon for the entire season and capturing the IFC crown for a seemingly endless number of consecutive seasons. Things are also looking up for Alpha-Mu's softball season. A softball championship is Alpha-Mu's goal.

Storm windows, a new boiler, new rugs and furniture, a new vacuum, and possibly new eaves for the roof are among the latest advances made in keeping Sigma Pi's historical landmark house looking its best.

#### UNDERGRADUATES:

Congratulations to graduating seniors **Pete Bugg, Rich Dibernardo, Dave Jansson, Tom Myrick, Dan Bonadeo, Tony Pezzano, Jeff Smith Bill Condon** and **Neil Tremaine**. Brother **Pete Burke** has been elected industrial engineering representative in the student senate. **Kelly Pollard** was elected civil engineering representative in the senate.

#### ALUMNI:

Thanks to the reinstatement of Alpha-Mu's alumni newsletter, "The B.A.T.," the chapter has been able to maintain communication with alumni. A big thanks to the alumni who have faithfully helped maintain the house. A special note of appreciation to **Tony Truzdale '81**, who donated a great deal of time and effort in installing the new boiler and getting the heat and hot water running smoothly.

## WAKE FOREST UNIVERSITY

AN May 12, 1940

Winston-Salem, N.C.—Sigma Pi led all fraternities at Wake Forest for the fall semes-

ter with a 2.78 GPA. Alpha-Nu's college bowl team of **Brothers Billy Apicelli, George Ehrardt, Steve Margosian** and **Sage John Reichle** handily won five matches en route to the final four, where they placed third. Thanks to Scholarship Chairman **Albert Hammill**.

On the sports scene, Alpha-Nu's basketball team made the playoffs for the second consecutive year. Ranked 17th going into the tournament, athlete **Steve Margosian** (sportsman of the year), **John Reichle** and **Pat Noud** fought a hard battle in the opening round game, but lost by one point in the final seconds. The team finished the year at 8-4. In wrestling **Dave Dollar** captured second in the 123-pound weight class.

The spring semester was a busy one for Alpha-Nu. The brothers had a full rush calendar, partying with three Wake Forest sororities and two Greensboro sororities. Rushees were treated to a minor league hockey game, and were also entertained with films at the house. Nine fine men pledged. They were welcomed into the fold at the little sisters valentine party. The new pledge class also visited the brothers of Epsilon-Alpha (Southern Tech, Georgia) and also travelled to Rho (North Carolina State) and Epsilon-Theta (Elon College, North Carolina). To recuperate from all the fun several brothers migrated to Ft. Lauderdale for spring break.

Orchid Ball weekend culminated the spring semester in fine fashion. A cocktail party was held on Thursday for incoming alumni, and Friday there was a barbecue dinner and party at the house. The Saturday dinner/dance at Tanglewood Country Club was a gala affair. More than 20 alumni attended. Special thanks to Grand Sage **Gary Tash** for attending. **Dwayne Burgess '82**, received the Gary B. Tash Alumnus of the Year Award for his support of the chapter, and **Bernard Brophy '82**, received the Alumni Contribution Award for financial support. Senior



Beta Chapter (Indiana University) Brother **Dave Tarr** takes an unexpected flight at IU's Little 500. Luckily, Dave escaped uninjured.

George Ehrhardt received the Folk-Dimmick Man of the Year Award for his fine work.

In community service, Alpha-Nu once again helped collect funds for the American Cancer Society. Several brothers also aided local authorities in the apprehension of several criminals operating on campus.

#### UNDERGRADUATES:

John Burgess will attend Bowman Gray Medical School. George Ehrhardt has been selected for inclusion in the 1984 International Who's Who in Fraternities and Sororities and will attend graduate school at Duke University. Steve Lingerfelt is preparing for a career in law enforcement. Pat Noud was elected to Phi Beta Kappa and will attend medical school. Daniel Mynatt was elected to Phi Beta Kappa and will attend Southeastern Theological Seminary. William Pollock will attend the University of South Carolina Law School. Steve Robinson has accepted employment with IBM. Roger Tart will be attending Bowman Gray Medical School. Tripp Porterfield has completed a successful season with the Wake Forest tennis team. Russ Meyer is helping to carry on Wake Forest's tradition of fine golfers.

#### ALUMNI:

Ken Reckenbeil '75, donated a needlepoint crest he made as an undergraduate. Drew Wyatt '82, is spending the summer working at the Alabama Shakespeare Festival. Scott Fitzgerald '83, is engaged to Pam Pounds. Dave Geb '83, is engaged to Hays Birkhead. Mark Lafave '83, will attend Bowman Gray Medical School.

## ARKANSAS STATE UNIVERSITY

ΑΠ March 7, 1948

Jonesboro, Ark.—A Sigma Pi man is the only kind of man at Arkansas State. Alpha-Pi is moving and moving fast. Alpha-Pi's outstanding academic growth has sparked further commitment to scholastic excellence.

The chapter's move to the new Sigma Pi complex in January accented the change with flourish. The work of the executive council has propelled Sigma Pi to the forefront of Greek life at ASU.

Alpha-Pi led ASU campus organizations at midterm with the highest overall GPA. Two recent drop-ins with the Chi Omega's and Phi Mu's have reestablished the "ladies man" image for Alpha-Pi. The word must have gotten around because many of the brothers were dates for the ladies of Zeta Tau Alpha at their "last blast." Orchid Ball crescendoed as Sage Gary Schirmacher led the festivities with date "Zen."

Finally spring picnic weekend is now over and Alpha-Pi can hang their mugs on the wall in preparation for finals. Watch out ASU . . . Sigma Pi is taking over!

#### UNDERGRADUATES:

Brad Ahrens, Bryan Earll and Charlie Uhlig were nominated to the National Deans List. Anthony Edwards was elected president of Phi Eta Sigma. Bryan Earll was elected alumni and professional director of Alpha Epsilon Rho. Randy Cooper was elected president of Delta Nu Alpha. Bryan Earll was elected chairman of ASU's financial aid committee and Dillon Watkins was elected SGA senator lower level arts and sciences.

Jay Ellis was elected treasurer of IFC.

#### ALUMNI:

Dr. Robert Ferrelasco was selected to chair the \$100,000 Terry Gwin Scholarship Fund. Jerry Orr was appointed to the metropolitan area planning commission. Charlie Schaaf was selected to serve on the Jonesboro City Council. Dan Trevathan was named vice president of Commonwealth Savings & Loan, Osceola. Herb Sanderson was appointed by Governor Bill Clinton to head Arkansas' Agency on Aging.

Special thanks to Jerry Ore and Roger Moore for the fine Sigma Pi complex.

Alumni get in touch with Alpha-Pi so that you can receive your monthly newsletter The Alpha-Pi Piper.

## SOUTHWEST MISSOURI STATE UNIVERSITY

ΑΡ April 1, 1948

Springfield, Mo.—The men of Alpha-Rho have had an excellent year in all aspects of college and fraternity activities. Alpha-Rho has participated in all major Greek athletics and many community service projects. This spring Sigma Pi recruited the largest pledge class on campus, 27 men.

Scholastically, Alpha-Rho was honored last year by maintaining the top GPA among fraternities, finishing number one last fall and number two in the spring.

In athletics, Alpha-Rho was awarded last year's Greek Supremacy trophy, a traveling trophy for the best overall fraternity in athletics. This year, Alpha-Rho finished first for the second consecutive year in all-school softball. Alpha-Rho also took first in all-school volleyball, co-rec water polo and all-Greek weightlifting. Alpha-Rho took third in all-school water polo, golf and wrestling, as well as all-Greek bowling and indoor soccer. Alpha-Rho has an excellent chance to retain the highly coveted Greek trophy.

Sigma Pi also participated in many community service projects like the annual Steak-Out for Muscular Dystrophy, the Branching Out project (Sigma Pi, Sigma Sigma Sigma, Alpha Delta Pi and Sigma Chi plant trees to beautify the community), the annual Christmas party for underprivileged children, and the Tug-of-Way for the Lung Association.

Alpha-Rho looks forward to the upcoming year.

#### UNDERGRADUATES:

This year's Orchid Ball award winners include: Athlete of the Year, Mike Nevels; Ideal Active, Billy Stephenson; Ideal Pledge, Tim Arnold; Service Award, Mike Haggerty and Scholarship Award, Darrel Hopkins. Congratulations also to Nancy Holt. Alpha-Rho congratulates graduates Tim Arnold, Lenny Clark, Fred Davidson, Joe Hulser, Ron Maring, Matt Meyer, Mike Nevels, Sean O'Brien, Tom Schill, Pat Spencer, Billy Stephenson and Todd Talkington.

#### ALUMNI:

Best wishes to the following alums and their wives-to-be: Jeff Howren and Leann Spiva, Dave Leach and Shari Walde, Wendell Stephenson and Laurie Oetting. Congrats also to: Chris Cressler, Mark Cado, Bruce Chevalier and Curtis Walker.

## UNIVERSITY OF RHODE ISLAND

ΑΥ September 25, 1948

Kingston, R.I.—In the two years since rechartering Alpha-Upsilon has quickly established Sigma Pi as one of the leading organizations at URI. With current membership at 100, Sigma Pi is the largest fraternity on campus.

Sigma Pi's presence was felt at this year's Greek Week. Strong wins in tug-o-war and cross country put Sigma Pi in the lead with one event to go, the keg toss. Favored in this event and having only to place to hold first, Sigma Pi was sure to win. It was hard to believe, but Sigma Pi dropped into second on two questionable "judgment" calls. Alpha-Upsilon graciously accepted second place, overall.

Alpha-Upsilon was very fortunate to have Rhode Island Governor Garrahy and URI President Eddy attend a formal dinner. Chef Chris Moddy prepared a delicious dinner. Afterwards there was a very informative question and answer period. The event was a great success and was a big step towards improving the Greek image.

Fund-raising this semester included a miracle mile for St. Jude's Hospital, and a raffle to win a semester's worth of books.

The fall semester looks to be very promising as 17 new brothers and 15 spring pledges fill the house with new enthusiasm and fresh ideas to make Sigma Pi even better.

## SAN DIEGO STATE UNIVERSITY

ΑΩ May 18, 1949

San Diego, Calif.—Alpha-Omega continues to flourish. The chapter has a long-standing tradition of campus leadership. Many brothers are involved in student government and community service. Brother Bill Earley was recently elected Associated Students vice president of finance. Also highly visible is Jim Corridan, IFC president and chairman of the University Center Board. Brothers Brian Billotte, Steve Karney and Steve Garnett are also on the University Center Board. Peter Green and Mike Gannon serve as A.S. council representatives. Mike Karney is the University's student affairs officer. Scott Mahler is a student representative on the Residence Halls Association Council and Howard Stone is the outgoing chairman of the Housing Advisory Board. Jim Corridan, Bill Earley, Joe Ferrero and Mike Karney were recently elected to the Order of Omega.

Sigma Pi will be working with Kappa Delta Sorority to treat the children of the University's Child Care Center to a day at Sea World.

## EASTERN ILLINOIS UNIVERSITY

ΒΓ June 10, 1949

Charleston, Ill.—Once again the tradition of involved dedicated Sigma Pi's continues at Beta-Gamma.

Brother Eric Laffey was chosen for the varsity tennis team and finished with a strong winning record. Brother Jim Lail, who



had an outstanding year in 1983 for the track team at EIU in the shot put and discus, was recently sidelined with a knee injury. Another blow came to standout basketball player and 1983 recipient of Sigma Pi Basketball Player of the Year **Doug Crook**. Doug was red shirted with the Panthers as he had a broken wrist. After much time of healing and therapy "Crooker's" back at full strength and ready to help the Panther attack next winter. Another player who helped the Panther "hoopsters" was Brother **Drew Beck**. The coming of spring weather brought the EIU Linksters back to the course. Returning to the team were standouts **Brent Herrin** and **Brant Richardson**. Also it was a good year for **Jim Jessen**.

**Glenn Good** made a successful bid for student body president. Good was a student senator and former speaker of the senate. Former Sage **Scott Martis** also constructed a successful campaign for student senate and **Marty Morgan** was appointed to the student supreme court.

The Founders' Day banquet was a great success. An open house was held at the chapter house. Many alumni and parents of actives attended. Winners of various awards include: **Jimmy Clark** and **Glenn Good** both received scholarship checks; Sage **Scott Martis** received a gavel plaque for outstanding performance as sage.

Brother **Jeff Phillips** worked hard to ensure a great **Orchid Ball**, and the efforts were not in vain. Seventy-five active brothers attended. It was a great time! The athlete of the year award was presented to **TC Mike Willoughby** for his outstanding performance in intramural sports. Repeating his performance as junior of the year, Sage **Scott Martis** received the senior of the year award. This year's winner of the junior of the year award is Pledge Trainer **Jim Reynolds**. Outstanding pledge of the year honors went to Fall '83 pledge **Glenn Good**.

Brothers **Mike Anderson**, **Scott Martis** and **John Uptmore** were commissioned as second lieutenants in the U.S. Army. They leave officers basic course in January for active duty. Brother **Steve Weigers** joined ROTC this spring.

Once again athletics, leadership and high achievements were the examples of the men of Sigma Pi at 956 Sixth St. With fall comes the promise of new rushees and members to ensure the continuation of this great Sigma Pi tradition.

## DREXEL UNIVERSITY

ΒΘ November 18, 1950

Philadelphia, Pa.—For the 13th time out of 15 years Beta-Theta Chapter has won the IFA cup. The cup is awarded to the fraternity that accumulates the most points in a year by competing in various interfraternity sporting events. Beta-Theta started out strong by winning the volleyball championship and then took second place in softball. The chapter also took the football championship for the ninth consecutive year, and then clinched the cup with a strong showing in basketball.

Beta-Theta also had a fine rush. The chapter initiated three men in the fall and nine in the winter. Fifteen pledged in the spring term.

The brotherhood also held a benefit band party. The proceeds went to the American Cancer Society. Beta-Theta also participated in a very successful town clean-up day.

All in all Beta-Theta Chapter continues to excel and dominate on the Drexel campus.

### UNDERGRADUATES:

**Nick Memmo**, second in graduating class of chemical engineers; **John Martignetti**, IFA vice president; **Dave Piede**, Drexel University wrestling team captain; Scholar Athlete of the Year **Chris Beck**, Drexel University hockey team goalie.

## NORTHERN ARIZONA UNIVERSITY

BI April 28, 1951

Flagstaff, Ariz.—Sigma Pi's Beta-Iota Chapter won the football, softball and basketball tournaments at NAU and placed second in water polo. The chapter's organized rush will be in the fall of '84.

Beta-Iota Chapter's rebirth was first looked upon as a joke by other NAU Greeks. However, now that Sigma Pi has been established as a firm, successful organization the chapter is a well-respected fraternity.

### UNDERGRADUATES:

Varsity football members: **John Anglemyer**, **Randy Cook**, **Joe Dandog**, **Thomas Gibson**, **John Mascola**, **Pat Meech**, **Mike Mendoza**, **Dan Moran**, **Greg Roskopf** and **Steve Trainotti**; varsity hockey members: **Dave Coburn**, **Scott Rupp**; varsity wrestling members: **Kevin Glynn** (All Big Sky Conference Champ), **Scott Auterieth**, **Paul Dumas**, **Kevin Woolridge**; varsity track team members: **Kirk Fiehler**, **Mike Jones**, **Albert Kelly**; varsity tennis: **Mark Smith**; **Ken Moffat**, All-Tournament team for National Hockey Club; **Mat Williams**, ASNAU Supreme Court Justice; **Ben Sommerville**, AIAA representative at Stanford University.

### ALUMNI:

Thanks to all alumni who were helpful in the reestablishing Beta-Iota. Outstanding Alumnus **Fred Fultz** has begun his own, successful sales promotion business. Outstand-

ing Alumnus **Aaron Holck** was the "big toe" for the reestablishment of Beta-Iota.

## UNIVERSITY OF MISSISSIPPI

BM September 27, 1953

University, Miss.—Beta-Mu has had a busy and eventful spring. Since returning to a water damaged house after Christmas break, the brothers have managed to get things back in order. The house is being repaired and it should look good for fall rush. Beta-Mu's goal is to double its size with the next pledge class.

**Orchid Ball** was a success. The Generics, a Memphis area band, performed for the brothers and their dates at Wall Doxey State Park. **Marc Palmer '81**, was presented with the Alumnus of the Year Award.

An alumni newsletter was sent out recently and it was well received. Alumni, expect more letters in the future.

The brothers participated in the restoration of an Oxford, Mississippi house for the annual tour of historic homes. Everyone had fun at this worthwhile civic project. Beta-Mu also contributed to The International Melting Pot, Friends of the University of Mississippi Library and the Richard Smith Liver Fund, a fund to pay for surgery expenses for a local patient.

Founders' Day was celebrated with a barbecue cookout at the house. Several alumni attended. More get-togethers with alums are being planned.

Congratulations to Beta-Mu's Sweetheart **Julia Trainum**, and also **Allison Davis** who was recently selected as a Rebel Recruiter.

Congratulations to **Joe Beckner** and **John Little**, both graduated last fall.

### UNDERGRADUATES:

Sage **Don Simmons**, delegate/alternate to the Democratic National Convention; FoC **Ken Weightman**, senior staff writer on the student newspaper the Daily Mississippian; **Bruce Reed**, Ole Miss Circle K president; **TC Galen Smith** presented alcohol awareness talks to campus groups.

### ALUMNI:

**Gary Champion '76**, recently became T-37



The 1982-84 Grand Sage Award Winners—Alpha-Delta Chapter (Auburn University, Alabama).

instructor at Randolph Airforce Base, Texas. Gary is a captain.

## NEW MEXICO STATE UNIVERSITY

**BE** February 5, 1955

Las Cruces, N.M.—Beta-Xi added ten new brothers through spring rush. Total actives now stands at 38. Sage **Make Koebke** and **FoC Brian Bassford** are serving out their terms on the IFC. This is the first time two Sigma Pi's have ever served on the IFC at the same time. Brother **Kevin Irvine's** bid toward the presidency (ASNMSU) was almost successful. It took a run-off vote to overthrow Kevin. Beta-Xi participated in several community service projects, such as painting the Munson Senior Citizen Center. Sigma Pi didn't fair too well in fall sports (basketball, football) but did make the playoffs in softball. The newly published Beta-Xi Cry, brainstormed by Brother **James Croto** (alumni correspondent), has been completed and sent out to alumni.

Little Sisters **Mitzi Wyatt** and **Lisa Nelson** received two spots on the varsity cheerleading squad.

Spring Final '84 was held in the mountains surrounding beautiful Ruidoso, New Mexico. The chapter lodged at the Carizzo Lodge. The facility included a weight room and nautical equipment, two huge jacuzzis and a steam and tanning room. The awards banquet went well, and dinner was great!!

Thanks to International for all the help.

### UNDERGRADUATES:

Brother **Anil Bhalla** received the prestigious Harry S. Truman Award for outstanding accomplishments in engineering. Brother **Frank Paul** was voted business college senator. **Alex Mendoza** was accepted to Notre Dame Law School. **Bill Clever** was accepted to the University of Kansas Law School. Varsity football members are **Rick Clopton**, **Ron Clopton**, **Donnie Miller** and **Ken Rose**. Brothers **Mike O'Keefe** and **Rusty Ratliff** are two of the youngest student football assistants to receive coaching spots. Both are sophomores. **Rick Zubiate** is fullback on the varsity rugby squad. Brother **Mark Haugo**, quarterback, co-captain will lead the varsity squad in the fall.

### ALUMNI:

**Jerry Leyeddecker '58**, is now working for the city of Las Cruces as a chief civil engineer with planning.

## CALIFORNIA STATE UNIVERSITY LONG BEACH

**BO** March 12, 1955

Long Beach, Calif.—Beta-Omicron's dry rush was highly successful. Seven men were pledged and initiated. The average number of pledges per house this semester was 4.5. Being the only house on campus to have dry rush gave Sigma Pi lots of positive publicity and proved that the Pi's are leaders at Cal State Long Beach. Dry rush worked so well that all 11 fraternities at Long Beach will participate in dry rush from now on. Beta-Omicron raised over \$500 for the chapter's

local philanthropy Cedar House, a home for battered children. The brothers also took second in IFC sports. This year's Orchid Ball was the biggest ever with a total of 58 couples in attendance at the beautiful downtown Victorville. The luau in Huntington Beach was a great way to end the semester.

It has been a semester full of change—all for the better! Things are still on the upswing for Beta-Omicron!

### UNDERGRADUATES:

**David Myers**, Associated Student Body vice president; **Mike Negri**, Long Beach State crew team captain.

### ALUMNI:

**Ray Chavez** has been promoted to senior sales rep at Lacerte Microcomputers. **Dave Benson** has landed a new position as an assistant controller in a new firm.

## UNIVERSITY OF VIRGINIA

**BII** April 4, 1959

Charlottesville, Va.—Spring semester was quite a showcase for Sigma Pi of Virginia. Recent elections of Brothers **Jamie Fenner** and **Rob Hull** to student government positions helped continue the already established tradition of Sigma Pi leadership.

Community Service Officer **Doug Dominick** coordinated the second annual softball tournament, benefiting the American Cancer Society. Eight hundred dollars was raised.

For the second consecutive year Sigma Pi has won the Billy Hill Memorial relay race; and, in the process, raised the most funds among all fraternities for the Heart Association. For this accomplishment Sigma Pi received a congratulatory letter from the Seven Society, a secret organization dedicated to the advancement of the University.

Beta-Pi is in the race for the intramural highpoint trophy. A good push toward the end of the year has given the chapter an excellent shot at a second title in three years.

### UNDERGRADUATES:

**Steve Theirbach**, honor committee; **Mike Kemether**, engineering student advisor; **Steve Karriker**, varsity football team; **Robert Ballou**, vice president of the honor committee.

### ALUMNI:

**Steve Theirbach** and **Scott Macleod** are to attend Harvard Law School. **Woody Fowler** to attend the University of Virginia Law School. **Joe Roberts** to attend the University of Virginia Medical School. **Scott Taylor** to attend Georgia Tech.

## NORTHERN ILLINOIS UNIVERSITY

**BΣ** May 23, 1959

DeKalb, Ill.—Beta-Sigma had a very successful and eventful spring '84 semester. The brotherhood began the semester by taking one of the largest pledge classes in the country with 22 men.

In sports, the chapter took first place in both A and B basketball leagues. In Greek Week, Sigma Pi took second place in tugs after a tremendous battle.

In philanthropy news, the chapter was

very busy. The brothers held a "Spring Backyard Bash," which 3,000 people attended. Eight hundred dollars was raised for SPEC. The chapter's "Fall Backyard Bash" raised \$1,500 for a kidney transplant for **Jorie Van Ohlen Hill**.

### UNDERGRADUATES:

**Paul Gorman**, 1983 IFC president; **Tom Madden**, 1983 homecoming king.

### ALUMNI:

Thanks alumni for helping the house acquire new windows, doors, carpets and tile.

## SHIPPENSBURG UNIVERSITY

**BT** April 23, 1960

Shippensburg, Pa.—Beta-Upsilon is proud to have added 13 new brothers. Spring formal was held March 31 at Hershey Lodge. **Frank Silady** did a fine job of coordinating the event. Beta-Upsilon sponsored a concert on campus featuring the band "The Hooters." The chapter also participated in a blood drive as a community project.

In the past two years Beta-Upsilon has grown from 18 brothers to over 30 thanks to the efforts of Rush Chairmen **Dave Whitehead** and **Robert Myers**. Last September Beta-Upsilon regained its charter from the University after being on a year's probation.

The 1982-83 academic year was climaxed with a concert in the University's field house, featuring the band "Kix." The concert drew over 4,500 fans.

The chapter has recently incorporated. Alumni signing corporation papers were **Ian Sykes**, **Mike Gardner** and **Roy Baldassari**.

In the future, Beta-Upsilon hopes to become even larger and improve relations with the administration and the community through service projects and sponsoring more on-campus events.

### UNDERGRADUATES:

**Dean Dimmig** did well in track this season. Congratulations to **Michael Jogle** for winning the David C. See Award, and to **Frank Silady** for winning the J. W. Yarose Award.

## UNIVERSITY OF DETROIT

**ΓA** May 5, 1962

Detroit, Mich.—Gamma-Alpha welcomes its newest member, "Lone Ranger" **Edward Stack**. Gamma-Alpha is proud to have served as the host chapter to the University of Windsor Colony. Expansion into Canada is a landmark both for Gamma-Alpha and for the whole of Sigma Pi Fraternity.

For the second consecutive year Gamma-Alpha reigns as Greek Week champions. A variety of events marked the contest, including pizza eating, car stuffing and an amoeba race.

Orchid Ball was held on April 6. This event—the highlight of the year—was a great success. Thanks to Orchid Ball Chairman **Kevin Ruppelt**.

During February Gamma-Alpha opened the house doors to former astronaut **Jack Lousma** following his talk on campus. Mr. Lousma is running for the GOP nomination for Michigan, in the U.S. Senate.

### UNDERGRADUATES:

Brothers **Jeff Hiris**, **Greg Nowak**, and **Greg Mallison** received scholarship key awards from the College of Engineering and Science. **Greg Mallison** was also elected president of the A.I.Ch.E. for 1984-85. Congratulations to graduating senior **Kevin Ruppelt** who was honored as the S.M.E. Student of the Year at U-D. Congrats also to varsity letter winners **Mark Kratter**, rifle team, and **Mike Stone**, indoor track.

#### ALUMNI:

Alumnus **George Hakim** was named "Alumnus of the Year" at Gamma-Alpha's Orchid Ball. Hakim serves as chapter director. Congratulations **George!**

### CENTRAL MISSOURI STATE UNIVERSITY

**ΓΓ** May 13, 1962

Warrensburg, Mo.—New officers for the 1984-85 are Sage **Bryan Bailey**, First Counselor **Kevin Thomas**, Second Counselor **John Coulter**, Third Counselor **Bryan Ivy**, Fourth Counselor **Matt Coleman** and Herald **Phil Hull**.

Formal was a great success. Thanks to all the alumni who attended!

The brothers held an Easter party for the children at Kiddie Day Care Center. Greek Week was enjoyed by all. The brothers of Gamma-Gamma won a plaque for most improved chapter at CMSU. Gamma-Gamma is excited about this and the brothers are looking forward to the upcoming year.

### SLIPPERY ROCK UNIVERSITY

**ΓΔ** December 2, 1962

Slippery Rock, Pa.—Gamma-Delta is in dire need of strong alumni support to formally establish an alumni corporation. A very important meeting is scheduled for Homecoming '84. Please make plans to attend. Your help is greatly needed!!!

Six new members were recently initiated. Sigma Pi, for an unprecedented second year, won the SRU Outstanding Chapter Award.

Sigma Pi raised nearly \$1,000 for the American Cancer Society by selling daffodils across campus. For community service the spring pledge class spent a day cleaning up the streets of Slippery Rock.

This year's second annual Sigma Pi Parents Day was a smash. More than 100 parents and friends attended.

Alumni not receiving the alumni newsletters should contact the chapter. Alumni, anyone who deals in insurance, real estate or banking, please contact Sage Randy at (412) 794-4573. Put your knowledge to use for Sigma Pi.

#### UNDERGRADUATES:

Congratulations to **Dave Martin** for recently being re-elected editor-in-chief of the **Rock-et**. Congrats also to **Mark Rambus** who was appointed president of the Union Programming Board.

Three brothers were recently selected to be charter members of the Order of Omega, a Greek honorary. They are **Jeff Keefer**, **Randy Mastrangelo** and **Bryan Carr**.

**Jim Vaglia** and **Randy Mastrangelo** were

recently commissioned second lieutenants in the U.S. Army. Congratulations to **Jeff Keefer** who was elected vice president of IFC.

#### ALUMNI:

Best wishes to graduates/new alumni: **Bryan Roschi**, **Bryan Carr**, **Mike Toth**, **Jim Vaglia**, **Jeff Whitaker**, **Brian Hutchison**, and **Dave Diffuccia**. Many thanks to **Bill Bayer**, **Tim Burns** and **Jeff Wrangler** for their contributions to Gamma-Delta's housing fund.

### FAIRMONT STATE COLLEGE

**ΓΕ** November 12, 1963

Fairmont, W.V.—Gamma-Epsilon has been very active in community service this year by taking a group of foster children to bowling and basketball games, contributing to Easter Seals, the Red Cross, the American Cancer Society, helping sponsor numerous trips for retarded children and being the major force in a campus-wide clean-up project.

Gamma-Epsilon has again proved itself to be number one at FSC. The chapter won the fraternity intramurals division championship for the second consecutive year and also won the scholarship cup for the highest GPA among fraternities.

This year has also been busy with social events, including a spring formal in Pittsburgh and a fall homecoming dance. **Tom Walker** once again directed a fine basketball tournament. Chapters from Slippery Rock, Salem, James Madison, Akron and Fairmont State College participated. Next year's tournament is scheduled for mid-March.

Gamma-Epsilon won the college bowl tournament at Fairmont.

#### UNDERGRADUATES:

Congratulations to **Rick Brooks** and **Rocco Fucillo**, both were recognized as Who's Who students. Congrats also to **Fred Matzke** and **Tim Watson**, newly elected president and vice president of the FSC student govern-

ment. Other Pi's in student government are **Clint Lemasters**, **Dan Calvert**, **Mike Russow** and **Allen Talley**. **Rocco Fucillo**, **Eric Kyanko** and **Dave Kaufman** are members of the Fairmont State debate team and have won numerous awards.

#### ALUMNI:

**Mike Hill '83**, is now a successful business man in the Washington D.C. area; **John Maple '83**, is now a salesman for an insurance company in Pennsylvania; former Sage **Bill Suan '84**, is beginning work on a local alumni club; **Rocco Fucillo '84**, will begin Law School in the fall.

### WORCESTER POLYTECHNIC INSTITUTE

**ΓΙ** May 1, 1965

Worcester, Mass.—Gamma-Iota recently added 15 new brothers. Gamma-Iota is making a name for itself. The chapter is in the running for overall intramural sports trophy. This is quite a change from previous years. Gamma-Iota won the intramural hockey trophy. The chapter also collected three trophies during Spring Weekend chariot race, including the best overall chariot trophy.

Gamma-Iota is presently making plans for the annual Sigma Pi jog-a-thon. This event raises money for the Massachusetts Lung Association.

#### UNDERGRADUATES:

**Kevin Szerey** is president of the freshman class. **TC Henry Skinner** is Student Activities Board president and is also ranked 17th in the nation for pistol competition. **Mark Dillon** and **Ed Kochling** are varsity soccer team members.

#### ALUMNI:

**Joel Patenaude**, '82 Sage, is presently working with the Peace Corps in Africa. Congratulations to **Edward McNamara**, an active member of Sigma Pi for 20 years. He is presently treasurer of the Gamma-Iota Alumni Corporation.



Proud to be a Pi—The University of Windsor Colony (Windsor, Ontario-Canada) are all smiles after their Sigma Pi Colonization.

## CENTRAL MICHIGAN UNIVERSITY

**ΔA** February 16, 1969

Mt. Pleasant, Mich.—Delta-Alpha recently purchased a second house to accommodate the ever-expanding brotherhood at CMU. Sigma Pi is the only fraternity at CMU that owns its housing.

Recent Delta-Alpha accomplishments/activities and honors include winners of the Greek Week spirit award, also second place in the swim meet and first in track. In intramurals Delta-Alpha took first in hockey, second in volleyball, first in racquetball and second in all-sports competition.

Delta-Alpha recently initiated 24 men. Twelve brothers recently graduated. Congratulations brothers!

In community service Sigma Pi was involved the local Neighborhood Watch Program, Home Energy Conservation Program and the brothers were also volunteers for a nature orientation for children.

Delta-Alpha roadtrips for this year included visits to Sigma Pi chapters at Indiana University and Georgia Southern. Orchid Ball at Farmington Hills, Michigan this year was extremely enjoyable and successful!!!

### UNDERGRADUATES:

**Al Kent**, Greek Man of the Year; **Pete Brown**, IFC president; **Tom Clare**, IFC treasurer; **Dave Cacki**, Alpha Academic Award; **Jim Kunts**, Alpha Academic Award. **Roger Best** is a member of the popular local band "Essentials." **T.J. Peter** recently broke the Greek record for the one-mile run.

### ALUMNI:

Thanks to Alumnus **Mark Bailey** for efforts in expansion, and also to **Curt Carson** for aiding in the colonization of groups at Michigan Tech University, Michigan State University and the University of Michigan. Thanks **Gary Strauss** for the tremendous concern for the chapter and its new house.

## LOUISIANA TECH UNIVERSITY

**ΔA** April 24, 1970

Ruston, La.—Spring started off with Delta-Lambda having Orchid Ball at the Restaurant Sclafani in New Orleans. All who attended had a great time. The actives were especially happy to see alumni in attendance. After the formal, the party continued at the world-renowned Pat O'Brien's, in the French Quarter. Awards presented at Orchid Ball include: Outstanding Alumnus, **Brian Kilian**, once again; Outstanding Active, **John Boucvalt** and **John Hill**; Outstanding Pledge, **Parameswar Sivaramkrishnan** and **Sweetheart, Renee Miller**. Delta-Lambda recently acquired a house to replace the one that burned down on October 28, 1983. It is a two-story house with an area of 4,150 square on 1.5 acres. It has five bedrooms upstairs with room enough to accommodate 11 to 12 people. The living room will be used as the chapter room. Thanks to Mr. Billy Lewis, President of Twin Cities Savings and Loan for his aid in getting us the house. Delta-Lambda's new address is: Sigma Pi International Fraternity, Delta-Lambda Chapter, 1704 West California, Ruston, La. 71270.

The purchase of this house shows great incentive on the part of Delta-Lambda. After only six months following the fire the chapter bought a house. This shows the unity and brotherhood of the chapter. The house is just one step in the growth and expansion of Sigma Pi at Louisiana Tech University.

### UNDERGRADUATES:

Congratulations to graduates **Stuart Roberts**, **James Cannetella** and **Brian Ferguson**.

## BALL STATE UNIVERSITY

**ΔN** November 14, 1970

Muncie, Ind.—On January 25, 1984 the Delta-Nu Colony of Sigma Pi was formed at Ball State University, Indiana. Officers and committee chairmen were then elected.

On March 17, Delta-Nu Colony had an open function to announce that a new fraternity was starting on campus. In April, colony members began selling tickets for a fund-raising project. The project was successful, bringing in more than \$100.

On April 12, the men of Sigma Pi and the women of Alpha Sigma Alpha gathered to enjoy an evening of fun and activities. The evening was a total success. The two groups will now pair up for Homecoming '84.

Finally, on May 4, Delta-Nu Chapter was formed with 36 founding fathers, and the future of Sigma Pi at Ball State looks bright!!

## MOREHEAD STATE UNIVERSITY

**ΔP** April 17, 1971

Morehead, Ky.—Delta-Rho clinched the overall intramural championship at Morehead State for 1983-84. This is only the second time the chapter has achieved this in its 13-year history. The brothers worked very hard for this honor. Three brothers placed in the top five individual standings.

In philanthropy news, Delta-Rho collected aluminum cans for Multiple Sclerosis.

### UNDERGRADUATES:

Former Delta-Rho Sage and TC **Blane Scarberry** has been the individual intramural champion of Morehead State for the past two years. Blane graduated cum laude in May. Congratulations and good luck Blane!

### ALUMNI:

**Dave Schuerman** of Rose Exterminating Company has been promoted to director of advertising and marketing. **Phil Coates** has become a manager trainee for Wendy's. **Wayne Muse** has gotten his special education endorsement and will begin teaching in the fall.

## INDIANA UNIVERSITY SOUTH BEND

**ΔT** May 16, 1971

South Bend, Ind.—Good news, the final payment on Delta-Tau's house was made April 21. A massive celebration was held in honor of the event.

Despite finishing in last place in intramural basketball, Delta-Tau's team made a great showing this year. The team improved greatly. Sigma Pi will have a basketball dy-

nasty in the near future.

### UNDERGRADUATES:

**Roger Gingerich**, past TC and newly elected Sage, has been elected vice president of the Student Association. Also, **Ken Andrezejewski** has been elected as a Student Association senator.

### ALUMNI:

The Michiana Sigma Pi Alumni Association has been officially incorporated with the state of Indiana.

## SOUTHERN TECHNICAL INSTITUTE

**EA** October 28, 1972

Marietta, Ga.—Epsilon-Alpha recently had a visit from the pledge class of Alpha-Nu Chapter (Wake Forest University, North Carolina). Congratulations to Wake Forest on a very fine pledge class.

Epsilon-Alpha continued a good rush this spring. The barbecue, bowling party, smoker and "Little Texas Night" were all successes. A mixer with Gamma Phi Beta was also a success. The chapter has been busy with fund-raisers and philanthropy projects like blood drives and a rock-a-thon with Delta Chi Gamma at Kennesaw College.

Epsilon-Alpha's softball team won the intramural softball tournament!

A successful Orchid Ball was held on May 12.

### UNDERGRADUATES:

Congratulations to **Dirk Arp**, **Tim West**, **Kelly Riley** and **Clark Goff** for making the dean's list. Congratulations also to **Jerry Wingate**, brother of the year; **Paul Lund**, pledge of the year; **Clark Goff**, scholarship award winner and Sigma Pi Sweetheart **Angi Bay**.

### ALUMNI:

Congratulations to **Dave Brannen**, outstanding alumnus and **Richard Burn**, die-hard Sigma Pi!

## UNIVERSITY OF KENTUCKY

**EB** October 20, 1973

Lexington, Ky.—The brothers of Epsilon-Beta have once again had a great semester. One major accomplishment was recruiting the highest pledge class on campus, 16, in the second semester of dry rush. Fourteen of these men will return in the fall. Brother **John Cain**, with the backing of the entire chapter, easily won the position of UK Student Government executive vice president, once again keeping Sigma Pi at the top of the student body, where it has been the past five years.

Some of this year's philanthropy projects included: an Epsilon-Beta sponsored blood drive held at the house. Also, the brothers worked with the Big Brother/Big Sister program and took 20 orphans to a Cincinnati Reds baseball game.

Epsilon-Beta's athletics had a successful year. The softball team closed out an undefeated season with an exciting come-from-behind win over Sigma Alpha Epsilon. In the recent Little Kentucky Derby Epsilon-Beta's bicycle team took second place in the relays

and third place overall.

This was indeed a successful semester here at Kentucky. We celebrated it by having a successful Spring Orchid Ball at the Lexington Sheraton. More than 50 couples attended.

Epsilon-Beta extends an invitation to all brothers to visit the chapter.

#### UNDERGRADUATES:

John Horne was named to the Greek Activities Steering Committee. Joe Smith has been accepted into Pharmacy School for fall term. Doug Woodward will serve another semester as IFC president. Bill Dehlinger will serve as IFC vice president. Bill also received the Chapter Service Award at a recent Greek awards banquet.

#### ALUMNI:

Epsilon-Beta wishes Kyle Reid '83, a speedy recovery. Chapter Director Tom Corcoran has been transferred to Ft. Bragg Army Base. The brotherhood will miss him. Steve Forsythe '83, recently wed former chapter sweetheart Mary Slaman. Congratulations to him and Epsilon-Beta's newest alumni: Greg Bandy, Jeff Buccannon, Scott Hisle, Jeff Osborne and Ken Osborne.

## ILLINOIS WESLEYAN UNIVERSITY

EF January 25, 1975

Bloomington, Ill.—Spring '84 was very enjoyable for Sigma Pi at Illinois Wesleyan. Epsilon-Gamma's formal, held in Peoria, was a huge success. In addition, the spring informal, "A Roll in the Hog," was one of the best ever.

Spring rush was also a success with the addition of three new pledges to fill the house past capacity. Epsilon-Gamma also did well scholastically finishing second in GPA among fraternities. The spring philanthropy, benefiting Multiple Sclerosis, was a fund drive by the brothers. It was very successful. September 14 the chapter celebrates its 10th anniversary with an open house and a party.

#### UNDERGRADUATES:

Brent Smith and John Groll have been accepted to medical school. Sam Porritt was accepted to graduate school at the University of Chicago. Doug Ghidina and Dave Garner were accepted to law school. Bob Zanotti spent a semester studying at the University of Paris-Sorbonne. Brad McMillan spent a semester serving an internship at the Capitol. John Corker is presently studying in New York City.

The brothers also excelled in athletics. Tom Newton broke the school high jump record. Bill Metzgenis a track team member. Doug Ghidina is an Illinois Wesleyan golf team member. Bod Zanotti and Brad McMillan are members of the tennis team.

Brothers have also been recognized on campus. Doug Ghidina was nominated as "Ideal Greek." Andrew Kreiss has a good role in the play "A Servant of Two Masters." Max Harmon was elected vice president of student senate. Steve Barge was elected president of the freshman honor society, Phi Eta Sigma. Mark Astle will be married in June. Congratulations Mark!

#### ALUMNI:

Matt Yeomans was accepted to medical school. John Porter passed his CPA examina-

tion and is currently going to graduate school at DePaul.

## WESTERN ILLINOIS UNIVERSITY

EZ May 1, 1976

Macomb, Ill.—Epsilon-Zeta's Dad's Day was a big success! Dads were treated to a Western-Northern Iowa basketball game, which Western won handily. A party at the house after the game capped a weekend of fun for all.

Orchid Ball was held April 14 at the Galesburg Holiday Inn. A great time was had by all. Epsilon-Zeta's fund-raiser was the second annual Rich Schafer fund drive. This year it was a bike for the memories, with proceeds going to the Rich Schafer Memorial Fund and Multiple Sclerosis.

On May 4, fourteen Pi's took turns riding bikes from Macomb to Terre Haute, Indiana. It was followed by a wild party with the Sigma Pi brothers at Indiana State.

Founders' Day took place on April 28. Some of the brothers who took honors were: David Nanninga, outstanding Sigma Pi; Tony Hamilton, outstanding senior; Rob Murray, outstanding alumnus; Gary Harrigan, outstanding pledge; and the Steven L. Vanne Award was awarded to Bill Dorn. Western President Leslie Malpass gave an inspiring speech to top off the evening.

Epsilon-Zeta experimented with dry rush recently and found many advantages to it. Being the first fraternity at Western Illinois to try dry rush, the chapter ended up with 12 excellent men.

Epsilon-Zeta congratulates not only its graduating seniors but all graduating Sigma Pi's! Goodbye and good luck!

#### UNDERGRADUATES:

Bob Burdi, IFC vice president and SGA senator at large; Kent Radovich, SGA attorney general. Good job Craig Roberts and Bill Dorn, both recently finished their terms as SGA president and vice president, respectively.

#### ALUMNI:

Jim Dunning ranked 10th in the nation in

judo while pursuing his MBA at Arizona State University. Dennis Nixon was once again elected captain of the Leathernecks track team and had an excellent season with a personal record in the 400m intermediate hurdles. Bill Buxton, employee at Pioneer Hi-Bred International, was named employee of the month for the southwest division. Finally, Earl Zivney is finishing his first semester teaching at Western.

## ILLINOIS STATE UNIVERSITY

EH March 19, 1977

Normal, Ill.—Epsilon-Eta's rush brought in 31 solid men. Intramurally, the chapter had the following championships: light-weight football, heavy-weight football, bowling (twice) and floor hockey. Epsilon-Eta took second place in scholarship and third place in the Greek-wide variety show.

In community projects Epsilon-Eta participated in campus clean-up, collected donations on street corners for the Ronald McDonald House and the snow softball philanthropy, which netted more than \$300 for the Peoria Children's Home.

#### UNDERGRADUATES:

Bart Fickes, Stefan McGhee and Terry O'Connor created a house history book, jackets and logo, and developed a Sigma Pi Brother board; Bart Fickes was responsible for three pledge classes averaging 17.

#### ALUMNI:

J. L. Winn is Epsilon-Eta's newest alum. He has contributed much of his time and also more than \$300.

## ELON COLLEGE

EO April 23, 1977

Elon College, N.C.—Epsilon-Theta has continued to build upon its reputation as the most prestigious and well-respected fraternity at Elon. Spring rush was a great success. It was highlighted by parties with Phi Mu and Tri Sigma sororities. Each party was attended by more than 100 rushees. Rush yielded 14 excellent pledges.



Zeta-Epsilon Chapter (Michigan Tech University) takes a break to enjoy one of the U P's many snowfalls.

Epsilon-Theta stepped up its efforts to improve fraternal relations by establishing a Brotherhood Relations Committee, which plans activities for brothers.

Seven brothers were recently elected to hold SGA offices. Sigma Pi has also done its part in making the average GPA for Greeks on campus higher than those of non-Greeks. **Bob Moser, Darrell Lea, Charlie Diehl, Greg Farina, Doug Bramley** and **Aaron Chatkin** all hold better than 3.3 GPA's. The major community service project was a Muscular Dystrophy superdance. More than \$400 was raised for MDA.

During Greek Week Epsilon-Theta won the chariot looks, long jump, 220 dash and frisbee competitions. Orchid Ball, held at Myrtle Beach, South Carolina was a great success. It capped one of the most successful and busy springs ever for Epsilon-Theta!

#### UNDERGRADUATES:

**Bob Moser**, 1984-85 SGA president, 1984 IFC vice president, 1984 Who's Who in American Universities and Colleges; **Michael Nutt**, 1984-85 SGA vice president; **Charlie Diehl**, SGA senator, IFC secretary; **Richard Young**, SGA senator; **Charlie Ganim, Darrell Lea, Chris Beebe**, SGA senators; **Darrell Lea**, Pi Gamma Mu Society.

### CALIFORNIA STATE UNIVERSITY NORTHRIDGE

**EI** November 19, 1977

Northridge, N.C.—After an uneventful rush, which brought one pledge, Epsilon-Iota gained six more pledges during the 10th week of school. Epsilon-Iota had a great time at this year's Greek Week. The chapter won two out of five events and took third place overall.

Northridge's new director of operations, **Richard Scott**, is a Sigma Pi alumnus. He is a tremendous help.

Thanks to outgoing Sage **Mike F. Cerrutti** for his efforts in the past year!

### SOUTHERN ARKANSAS UNIVERSITY

**EK** December 3, 1977

Magnolia, Ark.—Epsilon-Kappa enjoyed a very good spring. Spring rush went very well thanks to hard work by **Mark Edwards** and his committee. Eighteen men pledged boosting membership to 64.

Orchid Ball was held in Texarkana, Arkansas at the Holiday Inn. More than 150 members, alumni and their guests attended the ball. This year's award recipients are: **Spirit Award, Richard Johnson and Kelly Jordan**; Senior Award, **Vic Bishop**; Alumni Award, **Max McMahan**; Scholarship Award, **Mason Cozart**; Joseph White Scholarship, **Darwin Turner**; Orchid Award, **Jimmy Penney** and **Rianne Cardell**; Brother of the Year, **Shelby Nottingham**.

The annual Sigma Pi softball tournament went very smooth, thanks to some hard working members. This year's first place trophy went to Shoe Box out of Magnolia, Arkansas, which happens to be former Sage **Max McMahan's** team. Extra food left over from the concession stand was donated to

the Magnolia Children's Center.

#### UNDERGRADUATES:

**Rodney LaGrone**, *Bray* editor (school newspaper); **Steve Penney, Jimmy Penney, Mark Castleman, Bobby Newton** are Talley Hall Council members; **Dan Galway**, resident assistant; **Myron Leggett**, Inter-Greek Council president; **Britt Volker, Mark Edwards, Darwin Turner**, members of Alpha Chi.

#### ALUMNI:

**Terry Roberts**, Proctor & Gamble; **Doug Greenwood**, Digital Computer; **Gregg Parrish**, University of Arkansas Law School; **Russell Leggett, Brian Hooper**, General Dynamics.

### EASTERN KENTUCKY UNIVERSITY

**EA** April 22, 1978

Richmond, Ky.—Chapter Advisor **Ron Wolf** is resigning after seven years of service to Sigma Pi. He has been instrumental in Sigma Pi's success at Eastern. The brothers will miss him.

Epsilon-Lambda won volleyball and soccer championships and are currently leading in all sports. Epsilon-Lambda also went to the finals in softball.

In philanthropy news, the brothers went to Shriners Children's Hospital in Lexington, Kentucky and gave out gifts and candy that were donated by merchants.

#### UNDERGRADUATES:

**Greg Chrzczon** has maintained a 4.0 cumulative GPA in two majors. He is currently in two honor societies and received an academic award in Spanish.

#### ALUMNI:

**Kirk Randolph '83**, was promoted to lieutenant in the U.S. Army. **Doug Pavlovic '82**, was promoted to Colgate/Palmolive regional salesman for central Kentucky.

### FAIRLEIGH DICKINSON UNIVERSITY

**EZ** May 6, 1979

Rutherford, N.J.—Spring rush brought Epsilon-Xi seven new brothers. Epsilon-Xi also rated high among organizations at FDU in community and faculty relations. The chapter's Multiple Sclerosis project this semester was a 12-hour volleyball marathon that netted about \$1,000. During Halloween Epsilon-Xi had a Halloween party for orphaned children. The kids had a great time. In February Epsilon-Xi had its first faculty-brother wine and cheese party. Several faculty members attended and showed great interest in the Fraternity.

Epsilon-Xi and Alpha-Mu chapters held a spring break party together followed by a New Year's Eve party in late March. A clam-bake blowout on April 6 also got everyone primed for Greek Day on the 7th.

Epsilon-Xi's fared well in intramurals this semester, placing **Brothers Arthur Hayden and Kerwin Yamanaka** on the all-campus bowling team. The chapter also finished in first place among fraternities in football.

The sixth annual parent-brother cocktail party was held in April. The event brought

brothers and parents, as well as many alumni, together. Epsilon-Xi wishes the best to all brothers!

#### UNDERGRADUATES:

**Bob Vankirk, Joe Siebert**, awarded positions at Arthur Andersen accounting firm; **Mike Caffrey, Dave Hakula**, accepted to Honors Society; **Vic Almeida** past president of the Honors Society, will be graduating magna cum lauda; **Mike Caffrey**, accepted to graduate school at FIT; **Patrick Blank**, student representative to the University's board of trustees; **Guy Madson**, Inter-Club Council president; **Nadim Saad, Joel Skoletsky**, hold positions on the Biology Society executive board; congratulations **Dave Cohen, Billy Kelly** for being accepted to FDU's St. Croix campus.

#### ALUMNI:

**Kevin Johnson**, promoted to assistant beverage manager at the Grand Hyatt in New York City; **Andrew Griffo, Vincent Angelo**, promoted and transferred to the Chicago Hyatt; **Dave Keys** promoted to convention sales manager at the Waldorf-Astoria Hotel in New York City.

### DRURY COLLEGE

**EP** April 17, 1982

Springfield, Mo.—Epsilon-Rho has had a very successful spring semester, some accomplishments include: most money raised during alumni phon-a-thon; second place in Greek Sing; highest pledge, active and overall GPA; Easter party at Cerebral Palsy Center; spring formal held at Table Rock Lake in April; **Jody Hopkins** chosen as 1984-85 sweetheart; **Don Weber** chosen as 1984-85 outstanding educator; **Modred**, the Sigma Pi rat, won first place in the annual Sigma Phi Epsilon Rat Race; three new pledges were taken; \$100 donation given to Multiple Sclerosis; Epsilon-Rho ready for a great 1984-85!!!

#### UNDERGRADUATES:

**Paul Kastendieck**, outstanding Greek man, Breech Business School Outstanding Achievement Award; **Steve Adams**, Student Union Board president, outstanding sophomore man; **David Cox**, outstanding junior chemistry student; **Ron Carrier, Arts & Lectures chairman, Kappa Delta Sorority man; Mark Milne**, outstanding freshman chemistry student, outstanding freshman writing student; **Randy Barnes**, Ambassadors coordinator; **Steve Seibert and Steve Wilson**, SUB public relations.

#### ALUMNI:

**Randy Souden '81, Brad Ziegler '82**, both received law clerkships for the summer with firms in St. Louis and Kansas City, respectively; **Steve Sewel '82**, starts graduate study in business at Northwestern University this fall. **Russ Detten '82, Bob Strauss '82**, both recently married.

### LOYOLA MARYMOUNT UNIVERSITY

**EΣ** April 17, 1982

Los Angeles, Calif.—Epsilon-Sigma has been very active this semester. Spring rush was successful. The Fraternity added 18 men, remaining the largest fraternity at

The EMERALD of Sigma Pi

## LMU.

Philanthropic goals were met when Epsilon-Sigma raised over \$1,000 raffling off round trip tickets to Hawaii. The proceeds were donated to the university sponsored special games, an olympic-style competition for handicapped athletes.

With the graduation of its founding fathers, an alumni club is among the Fraternity's plans for the fall.

### UNDERGRADUATES:

Gene Keller, all-star rugby for Southern California; Dave Fox, homecoming king of Loyola.

## UNIVERSITY OF TENNESSEE MARTIN

### ET May 1, 1982

Martin, Tenn.—Epsilon-Tau participated in a pizza eating contest for special olympics, and also a fund-raiser to benefit the Senior Citizen Center.

### UNDERGRADUATES:

Mark Minor, awarded ROTC scholarship; Jimmy Williams, starred in a local production of Camelot; Wade Glascock, awarded pledge of the year by IFC.

### ALUMNI:

Capt. Ben Morris '82, returned from Grenade; Tom Hammond, taken a job with Crop Production Services as a crop consultant.

## UNIVERSITY OF SAN DIEGO

### EX April 16, 1983

San Diego, Calif.—In intramural action Epsilon-Chi was a huge success! Sigma Pi won intramural championships in floor hockey and water polo and were runnersup in football and softball.

Epsilon-Chi also walked away with the GPA award. The chapter also raised over \$4,000 for the National Sudden Infant Death Syndrome (S.I.D.S.). Brother Bruce Lyle organized the drive. Rush was a huge success, 16 new brothers initiated, bringing the chapter total to 87.

### UNDERGRADUATES:

Jim McNamee, John Foster, varsity tennis members; Jim McNamee received an invitation to the U.S. Olympic Trials. Mike Davis, elected A.S.B. vice president; Dante Sorianello, elected secretary of justice, A.S.B. and plays varsity football; Treak Tasker, Frank Callahan, varsity crew team members; Mike Licosati, Tony Samaniego, Charlie Hanson and Whitly Collins, varsity rugby members; Shawn O'Hearn, Joe Holmes, J.V. crew team; Murry Deline, junior class senator; Bill Hogen, A.S.B. social chairman; Tim Huckaby, selected for the Reno-Business Policy Games for his computer science skills; Joe Bartel, number two team member on varsity cross country.

### ALUMNI:

Charlie Abdi '83, Sigma Pi area director. Congratulations to all graduating brothers, especially past Sages Mike McGuire and Steve Gauvin.

## WIDENER UNIVERSITY

### EΨ April 23, 1983

Wilmington, Del.—Epsilon-Psi had an aluminum can drive in the Wilmington area. In April, Epsilon-Psi had its first Orchid Ball. The chapter also recently elected new officers.

### UNDERGRADUATES:

Greg Sykora, outstanding brother award; Mike Tanner, Greg Blizzard, Ken Wood, Alan Dasantis, Who's Who; Scott Brown, Lester Jorn, John Fajnor, Bob Wagner, Dave Kendig, Mark Taylor and Todd Holtsherry, graduating brothers.

### ALUMNI:

Brian Fleming '83, beverage manager, Chi Chi's, Media, Pa.

## POTSDAM STATE COLLEGE

### EΩ November 5, 1983

Potsdam, N.Y.—Since its conception in the fall of 1981 to its chartering on November 5, 1983, Epsilon-Omega has established itself as a leader among Greeks at Potsdam. Potsdam State shares the community with Clarkson University and therefore competes with 18 other fraternities. It is gratifying to hear, in such a short time, that Sigma Pi has become the quality standard by which others are judged.

The annual Ice Carnival, equivalent to other campuses Greek Week, was a great success for Sigma Pi. The chapter took seven out of 10 trophies in the men's division.

Sigma Pi also has the largest single function fund-raiser of any organization, "The St. Valentine's Day Massacre." It's an annual blow out that the college communities look forward to.

Epsilon-Omega is also pleased with its little brother colony's success (S.U.N.Y. Plattsburgh). Epsilon-Omega has already made contacts with several colleges in the state of Vermont, which appear promising for colonization this fall. Sigma Pi also has the opportunity to expand into Canada at Ottawa and Montreal.

The brothers at Epsilon-Omega challenge those chapters who have not made the effort to expand the ideals of Sigma Pi Fraternity, to do so. Let's make Sigma Pi the number one fraternity, not just in numbers, but in the full breadth of our ideals. Let's push Sigma Pi over the 300 active chapters mark before our centennial in 1997.

## WEST CHESTER UNIVERSITY

### ZA February 4, 1984

West Chester, Pa.—On February 6, 1984, 18 men were initiated into the newly chartered Zeta-Alpha Chapter. That day will be remembered by all who attended. Thanks to the chapters who participated in the chartering, especially those from Temple University. The day ended with a party that was the "social event" of the year. Later that year Zeta-Alpha initiated eight more men.

Highlights of the year included a road trip and tailgate party before the University of Delaware game. Once again Zeta-Alpha led

all others in most donors in the campus annual Red Cross blood drive.

After a disappointing basketball season, Zeta-Alpha looked forward to a promising softball season. Being the chapter's first year in the league, other fraternities learned Sigma Pi was a force to be reckoned. Many fraternities found themselves victims of upsets. Zeta-Alpha's highpoint came during Greek Week. The other long established fraternities were stunned when Sigma Pi placed third overall and scored a first place in the opening night's competition. Led by Sage Greg Coffin and Captain Lew Fowler in quarters and darts, Zeta-Alpha walked away with the blue ribbon in the Barroom Olympics.

### UNDERGRADUATES:

Greg Coffin, Ed Monroe, Who's Who in Fraternities and Sororities; Greg Coffin, Leroy Risell, nominated for the Sigma Pi Michael P. Carey Award; Mike Danilla, most valuable brother; Adam Beck, Freshman Honors Fraternity president; Ed Monroe, IFC vice president; Matt Chalawsky, Adam Beck, Darell Smith, Ed Monroe, Greg Coffin, dean's list; Zeta-Alpha Chapter, highest campus GPA.

## MICHIGAN TECHNOLOGICAL UNIVERSITY

### ZE April 28, 1984

Houghton, Mich.—Huskie Colony has been chartered and is now Zeta-Epsilon Chapter. The chartering ceremony was held on April 28. Thirty-eight men were initiated. The week prior to the ceremony was spent in Greek Week activities. Huskie Colony was in charge of the Greek games by the end of the week.

Zeta-Epsilon recently acquired a house. The house will hold 15 brothers and will be the home of Sigma Pi until a better house can be found and purchased. The address of the new house is: 101 W. Montezuma, Houghton, Mich. 49931.

## UNIVERSITY OF NEVADA RENO

Reno, Nev.—Reno Colony is growing. This semester two new men joined, Thomas Kaness and Donald Nutting. The brothers went on their first retreat at a house in Truckee, California. It was a well-deserved break.

Reno Colony placed a strong third in Winter Carnival. The follow-up to our immensely successful bake sale last semester, was again a success. All proceeds went toward brothers' expenses to Convocation.

### UNDERGRADUATES:

TC John Caselli, \$400 art scholarship; Sage Clay Thomson received a nomination to be in the Who's Who on College Campuses.

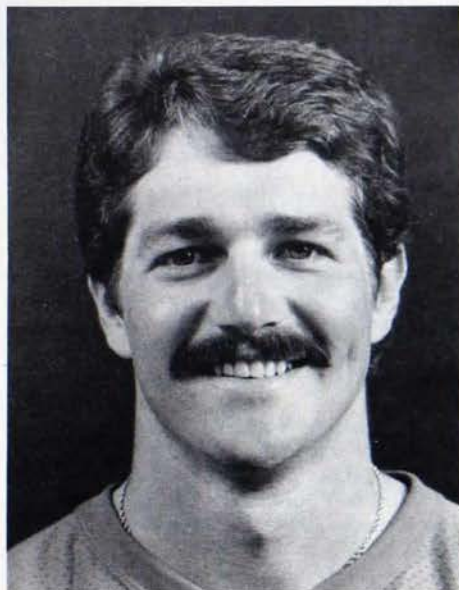
## STATE UNIVERSITY OF NEW YORK PLATTSBURGH

Plattsburgh, N.Y.—From all of the founding fathers of the Sigma Pi Colony at Platts-

\*(Continued on page 26)



Elvin C. "Ducky" Drake



Jeff Gossett



Rudy Feldman



# Sigma

by Jay

## OLYMPICS

Several Sigma Pi alumni made good contributions to the successful Olympic effort in Los Angeles this summer. **Bob Seaman**, UCLA '54, served as manager of the U.S. women's track and field team. When not involved in amateur track, he is a sales rep for Johnson Wax in the Los Angeles area. **Bill Meyer**, UCLA '47, was assistant Venue Protocol manager for the Olympic aquatic events, which included swimming, diving and synchronized swimming. He currently serves as vice president, Administration for United States Diving, the national governing body for the sport.

**Elvin "Ducky" Drake**, UCLA '24, was honorary chairman of the Sports Federation citizens advisory commission, one of 23 such groups charged with making the best use of facilities and talent. It's not surprising that Ducky was involved with the Olympics since he has been a part of the Los Angeles sports scene for 60 years. He served as UCLA's track coach for 17 years, winning the 1956 NCAA title, and was pleased to see his former pupil, Rafer Johnson, light the Olympic flame in the opening ceremonies. Ducky has also served his alma mater as athletic trainer for more than 30 years and the track stadium is named in his honor.

Serving as an official starter at the rowing competition at Lake Casitas, California was **Bob Hillen**, UCLA '36, crew coach at the University of Southern California for the past 36 years. A coxswain on the UCLA crew for three years, he later was an assistant coach for the school before moving across town to establish the USC program. Today, the Trojan crew program rivals the school's football team in numbers with close to 100 rowers under Bob's tutelage. The crew's training regimen includes running up to 20 miles a week, weight lifting and running up and down the Coliseum steps. Bob says "It's important for a crew to be in good physical shape, but the mental aspect is very important. They have to practice in complete isolation and when they perform in a race, there are no crowds. They get very little media attention

but, for the most part, the athletes in crew are quiet types who have less need for attention."

## BASEBALL

**Mark Cresse**, Long Beach State '71, is in his eighth season as a coach with the Los Angeles Dodgers and 11th year in the organization. He has been involved in four World Series and was a member of the National League All-Star team coaching staffs in 1975, 1978, 1979 and 1982.

Several other Sigma Pi's have been involved with major league baseball over the years. The most successful player was pitcher **Tom Timmerman**, Southern Illinois '59, who was with the Detroit Tigers (1969-73) and Cleveland Indians (1973-74). As a Tiger rookie in 1969 he had a 4-3 record and 2.75 earned run average. The following season, he was one of the American League's top relief pitchers, posting a 6-7 record and 27 saves in 61 games. In 1973 with both teams, he was 9-8 in 46 contests. Tom's career record was 35-55 with a 3.78 earned run average for 228 games.





# Sports

nmr

Another Beta-Nu big leaguer was **Jim Panther**, Southern Illinois '65, who pitched for three clubs, beginning with the Oakland A's in 1971. He appeared in 58 games for the Texas Rangers in 1972 then concluded his career by pitching in 23 contests for the Atlanta Braves in 1973. Infielder **Glenn Redmon**, Michigan '68, spent several seasons in the Cleveland Indians farm system before seeing his only big league action (seven games) with the San Francisco Giants in 1974. If there are other Sigma Pi members who have played big league baseball, please send us their names so we can cite them in a future issue.

## PRO FOOTBALL

Two Sigma Pi alumni are coaching in the National Football League once again. **Rudy Feldman**, UCLA '50, is in his seventh year with the St. Louis Cardinals. He coached the defensive line the first four years then became linebackers coach in 1982. Before joining the Cardinals, Rudy was both offensive and defensive line coach of the San Diego Chargers for four seasons. Captain of

the 1953 UCLA team, he also coached at the college level and was head coach at New Mexico from 1968 to 1973.

One of the Fraternity's greatest players of the past, **Ralph Baker**, Penn State '64, is in his fifth season as linebackers coach for the New York Jets. An All-American in 1963, he played 11 seasons at linebacker for the Jets, retiring after the 1974 season.

**J. W. Sanders**, Southern Illinois '57, is once again serving as a back judge for the National Football League. A physical education professor at Eastern Illinois University, he is in his fifth year as a pro official.

One of pro ball's leading punters, **Jeff Gossett**, Eastern Illinois '75, is taking it easy this fall after performing in two pro leagues over the last 12 months. He handled the punting chores for the Cleveland Browns of the NFL in 1983, booting 70 punts for a 40.8 average and a long punt of 60 yards. A free agent following the season, he signed with the Chicago Blitz of the United States Football League and had his best year, leading the USFL with a 42.3 average on 85 kicks.

## COLLEGE FOOTBALL

In his third year as an assistant coach at the University of Virginia is **Frank Spaziani**, Penn State '67, who handles the Cavaliers' defensive secondary. A versatile athlete who played six positions on the Penn State varsity, Frank spent one year as a graduate assistant under Joe Paterno then was a high school coach for five years. He joined the Navy coaching staff in the spring of 1975 and was at the Academy for seven seasons.

Last year's top Sigma Pi college player, **Jay Jacobs** of Auburn University, decided to pass up his final year of eligibility this fall. An offensive tackle for the Tigers, he was named to the Los Angeles Times "walk-on" All-American team for 1983.

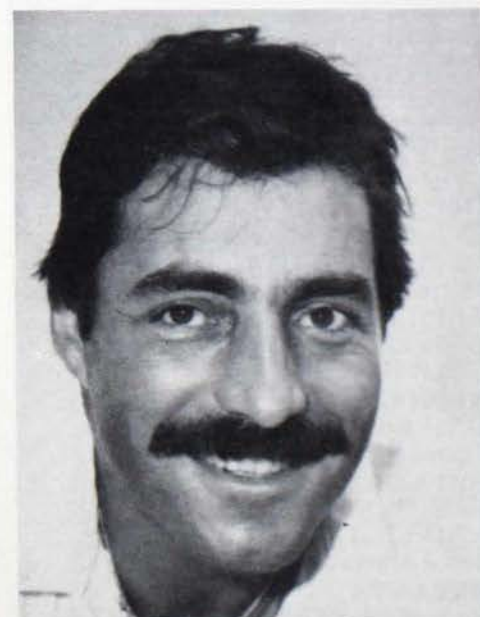
Look for Sigma Pi players this fall at Rhode Island, St. Lawrence, Southern Arkansas, Ohio Northern and other schools. Chapters, be sure to send us the names of your football players so that we can select the Sigma Pi All-Star football team in a forthcoming issue.



Ralph Baker



Bob Hillen



Frank Spaziani



# Loyalty Fund Contributors

From July 1, 1984  
through  
June 30, 1984

## **TRIAD CLUB (\$100 or more)**

**ALPHA**  
VINCENNES UNIVERSITY  
Michael J. Gough

**ETA**  
PURDUE UNIVERSITY  
Gerald J. Cassidy

**KAPPA**  
TEMPLE UNIVERSITY  
Russell Wilhour

**MU**  
CORNELL UNIVERSITY  
Robert J. Lansdowne

**NU**  
FRANKLIN & MARSHALL  
COLLEGE  
Thomas Hughes

**PI**  
UTAH  
Richard V. Aamobt

**SIGMA**  
IOWA STATE UNIVERSITY  
Ralph E. Henderson  
James L. Watson

**ALPHA-BETA**  
UNIVERSITY OF MICHIGAN  
Robert C. Straub

**ALPHA-DELTA**  
AUBURN UNIVERSITY  
Daniel F. Breeden  
Max L. Rosenberg

**ALPHA-EPSILON**  
MERCER UNIVERSITY  
John E. Minter

**ALPHA-THETA**  
BELOIT COLLEGE  
John C. Florin

**ALPHA-MU**  
NEW JERSEY INSTITUTE OF  
TECHNOLOGY  
Robert P. Bergdoll  
H. Gail Clarke

**ALPHA-RHO**  
SOUTHWEST MISSOURI STATE  
UNIVERSITY  
Dennis V. Day

**ALPHA-SIGMA**  
UNIVERSITY OF ARKANSAS  
Darrell L. Spriggs

**ALPHA-PHI**  
UNIVERSITY OF GEORGIA  
Stuart H. Caplan

**ALPHA-CHI**  
UNIVERSITY OF MARYLAND  
James E. Booth

**BETA-GAMMA**  
EASTERN ILLINOIS  
UNIVERSITY  
Jeff J. Oberschelp

**BETA-ETA**  
SAN JOSE STATE UNIVERSITY  
Howard L. Vierra

**BETA-THETA**  
DREXEL UNIVERSITY  
Brent D. Metrow

**BETA-OMICRON**  
CALIFORNIA STATE  
UNIVERSITY—LONG BEACH  
Donald J. Bocok  
John J. Merino, Jr.

**BETA-PI**  
UNIVERSITY OF VIRGINIA  
Gary B. Tash

**GAMMA-SIGMA**  
UNIVERSITY OF MISSOURI—  
COLUMBIA  
Gregory L. Barnhill

**GAMMA-UPSILON**  
MURRAY STATE UNIVERSITY  
Scott P. Ashley

**DELTA-ZETA**  
UNIVERSITY OF MISSOURI—  
ST. LOUIS  
Lawrence M. Kennedy

## **TAU PHI DELTA CLUB (\$50 to \$99)**

**BETA**  
INDIANA UNIVERSITY  
Harold J. Anderson  
Arthur E. Mengon  
Gene Newcombe

**GAMMA**  
OHIO STATE UNIVERSITY  
Edmund L. Fochtman  
Stephen G. Hamilton  
John L. Marshall  
Frank H. Milliken  
John T. Richards, Jr.  
Lester E. Webb

**DELTA**  
UNIVERSITY OF  
PENNSYLVANIA  
Walter D. Kephart  
Frank J. Strassner

**EPSILON**  
OHIO UNIVERSITY  
George L. Haller  
Dean F. Houser

**ETA**  
PURDUE UNIVERSITY  
Cletus A. Broecker  
Irvin W. Carpenter  
Joseph E. Solan  
Paul G. Willen

**THETA**  
PENNSYLVANIA STATE  
UNIVERSITY  
Brent M. Curtis

**IOTA**  
UNIVERSITY OF CALIFORNIA,  
BERKELEY  
John H. Moskowitz  
Alexander Simontacchi

**KAPPA**  
TEMPLE UNIVERSITY  
Raymond S. Witkowski

**MU**  
CORNELL UNIVERSITY  
Albert L. Batchelder  
Richard G. Clark  
James H. Keene

**NU**  
FRANKLIN & MARSHALL  
COLLEGE  
Richard E. Samuels

**RHO**  
NORTH CAROLINA STATE  
UNIVERSITY—RALEIGH  
John E. Eaton

Jon T. Hockenberry  
Louis B. Hoffman  
Samuel A. Monroe

**SIGMA**  
IOWA STATE UNIVERSITY  
Dominick J. Leo

**TAU**  
UNIVERSITY OF WISCONSIN—  
MADISON  
Ronald C. Jones

**UPSILON**  
UNIVERSITY OF CALIFORNIA—  
LOS ANGELES  
Lee A. Davis  
Walter W. Keusder  
William D. Meyer  
James M. Seely

**PHI**  
UNIVERSITY OF ILLINOIS  
Donald L. Bunnell  
Roger F. Dickinson  
Hugh E. Van Voorst  
John H. Waldo

**CHI**  
PITTSBURGH  
Thomas A. Burkhart  
William W. Widdowson

**PSI**  
EMORY UNIVERSITY  
John G. Kernan  
Alfred W. Walker, Jr.  
William L. Wall

**OMEGA**  
OREGON STATE UNIVERSITY  
Eric M. Jochim  
John L. Michels

**ALPHA-DELTA**  
AUBURN UNIVERSITY  
David M. Henig  
Roger I. Martin, Jr.  
Stewart D. McKnight

**ALPHA-ZETA**  
ST. LAWRENCE UNIVERSITY  
Herbert W. Hallman  
Douglas K. Mickle

Anthony C. Passaretti  
**ALPHA-THETA**  
BELOIT COLLEGE  
Fred Johnson

**ALPHA-IOTA  
UNIVERSITY OF MISSOURI—  
ROLLA**

Lyndell R. Cummins  
Franklin B.W. Woodbury

**ALPHA-KAPPA  
LOUISIANA STATE  
UNIVERSITY**

Alva E. Edwards

**ALPHA-MU  
NEW JERSEY INSTITUTE OF  
TECHNOLOGY**

Walter A. Braun  
George W. Rafferty

**ALPHA-NU  
WAKE FOREST UNIVERSITY**

Edgar C. Voress

**ALPHA-PI  
ARKANSAS STATE  
UNIVERSITY**

Clarence A. Crowder  
Robert C. Davidson

**ALPHA-RHO  
SOUTHWEST MISSOURI STATE  
UNIVERSITY**

Basil J. Boritzki  
William I. Moon

**ALPHA-SIGMA  
UNIVERSITY OF ARKANSAS**

Edward V. Ash  
John T. Hall, Jr.  
Clair S. Smith

**ALPHA-UPSILON  
UNIVERSITY OF RHODE  
ISLAND**

Robert F. Poyton

**ALPHA-PHI  
UNIVERSITY OF GEORGIA**

William M. Reed, II  
David Wells

**BETA-GAMMA  
EASTERN ILLINOIS  
UNIVERSITY**

Eugene E. Aikman  
Thomas P. Christy  
Roger C. Claar  
D. Dean Crook  
Don Fuller

Gaylord L. Garner  
J. W. Oglesby  
Eli R. Sidwell, Jr.

**BETA-THETA  
DREXEL UNIVERSITY**

David Beyel  
Raymond A. Cassetta

**BETA-IOTA  
NORTHERN ARIZONA  
UNIVERSITY**

Russell P. Chick  
John W. Penney  
Dale Prochnow

**BETA-KAPPA  
ARIZONA STATE UNIVERSITY**

Robert J. Harrington  
Charles R. Wade

**BETA-LAMBDA  
LYCOMING COLLEGE**

Gilbert K. Glenn

**BETA-XI  
NEW MEXICO STATE  
UNIVERSITY**

Juan A.N. Juarez

**BETA-OMICRON  
CALIFORNIA STATE  
UNIVERSITY—LONG BEACH**

Steven S. Dohara

Lloyd N. Farris

Kevin L. Jones

Frank L. Massick

Andrew Salas

**BETA-PI  
UNIVERSITY OF VIRGINIA**

Philip R. Zink

**BETA-RHO  
ATLANTIC CHRISTIAN  
COLLEGE**

Allan C. Richeson

**BETA-PHI  
ROCHESTER INSTITUTE OF  
TECHNOLOGY**

Edward Boettner

**BETA-CHI  
LOYOLA UNIVERSITY—  
CHICAGO**

Frank G. Slocumb

**GAMMA-ZETA  
PARSONS COLLEGE**

Howard W. Hall

**GAMMA-KAPPA  
INDIANA INSTITUTE OF  
TECHNOLOGY**

Thomas A. Sommerfield

**GAMMA-PI  
INDIANA STATE UNIVERSITY**

Emerson B. Kendall

John A. Stachura

**GAMMA-SIGMA  
UNIVERSITY OF MISSOURI—  
COLUMBIA**

Lawrence A. Judy

**GAMMA-TAU  
GEORGIA SOUTHERN COLLEGE**

Dennis H. Ingley

**GAMMA-UPSILON  
MURRAY STATE UNIVERSITY**

E. Andrew Morris

**GAMMA-OMEGA  
WAYNE STATE UNIVERSITY**

Kurt J. Lauer

**DELTA-GAMMA  
MILTON COLLEGE**

James T. Holden

**DELTA-PHI  
UNIVERSITY OF WISCONSIN—  
LA CROSSE**

Robert L. Burns

**DELTA-OMEGA  
SOUTHERN ILLINOIS  
UNIVERSITY—EDWARDSVILLE**

Steve Madson

**EPSILON-ALPHA  
SOUTHERN TECHNOLOGICAL  
INSTITUTE**

Harry R. Burns

**EPSILON-GAMMA  
ILLINOIS WESLEYAN  
UNIVERSITY**

Todd L. Rust

**EPSILON-ZETA  
WESTERN ILLINOIS  
UNIVERSITY**

Roger W. Coffman

**EPSILON-ETA  
ILLINOIS STATE UNIVERSITY**

Phillip Gutmann

**EPSILON-LAMBDA  
EASTERN KENTUCKY  
UNIVERSITY**

Larry A. Holtzapple

**EPSILON-NU  
CALIFORNIA STATE  
UNIVERSITY—FULLERTON**  
Christopher S. Scott  
Russell E. Frieson  
**EPSILON-UPSILON  
UNIVERSITY OF CALIFORNIA—  
DAVIS**  
David A. Aguilar

**TOP TEN CHAPTERS  
(Average Contribution)**

1. ALPHA-BETA  
Michigan
2. DELTA-PHI  
University of Wisconsin—  
La Crosse
3. EPSILON-UPSILON  
University of California—  
Davis
4. EPSILON-ETA  
Illinois State University
5. ALPHA-SIGMA  
Arkansas
6. GAMMA-SIGMA  
University of Missouri—  
Columbia
7. EPSILON-ALPHA  
Southern Technological  
Institute
8. BETA-SIGMA  
Northern Illinois  
University
9. BETA-KAPPA  
Arizona State University
10. ALPHA-EPSILON  
Mercer University

**TOP TEN CHAPTERS  
(Number of Contributors vs  
Number Living Members)**

1. EPSILON-UPSILON  
University of California—  
Davis
2. EPSILON-NU  
California State  
University—Fullerton
3. TAU  
University of Wisconsin—  
Madison
4. CHI  
Pittsburgh
5. PSI  
Emory University
6. ALPHA-EPSILON  
Mercer University
7. DELTA  
University of  
Pennsylvania
8. BETA-KAPPA  
Arizona State University
9. EPSILON-KAPPA  
Southern Arkansas  
University—Magnolia
10. GAMMA  
Ohio State University

# BROTHERHOOD CLUB

## ALPHA:

*Vincennes University*  
James R. Armstrong  
Isaac K. Beckes  
Robert F. Burnos  
Robert W. Columbe  
Alan L. Cummings  
John Davis  
Ralph A. Deetz  
Michael R. Gocker  
James R. Hester  
Lawrence D. Hickman  
David L. Holmes  
William LaDow  
William L. Lane  
John M. Mitchell  
David A. Nation  
Terrence J. Rogan  
Lee K. Seidel  
Hugh A. Stephenson  
Ronald H. Zeller

## BETA:

*Indiana University*  
John A. Banka  
William M. Brattain  
Robert J. Brough  
Charles G. Castor  
Edward M. Cockerill  
Michael L. Craig  
Henry J. Decker  
Thomas C. English  
Alfred Goffinet  
James R. Grossman  
Maurice D. Hawbaker  
Donald D. Hendry  
Rudolph G. Huber  
Byron E. Jackson  
James E. Johnson  
Kenneth A. Kesler  
Vivian F. Lanman  
Gilbert E. Mascher  
R. Earl McCaslin  
Robert N. Meiser  
S. Douglas Middleton  
Edward J. Mitchell  
Floyd B. Mitman, Jr.  
Lee A. Newell  
Thomas A. Perry  
James R. Phillippe  
William M. Pontz  
Wilber N. Roberts  
A. William Rolf  
Edward C. Rosenwinkel  
Edward A. Rucinski  
Charles A. Schreiber  
Franklin H. Smith  
Eldred W. Stout  
Don Willsey

## GAMMA:

*Ohio State University*  
Loring R. Alstadt  
Richard H. Anderson  
James F. Bailey  
Henry A. Bell  
Richard A. Bobb  
William E. Bohlender  
August J. Breitenstein  
Herbert Brownlee  
James B. Burrows  
Robert L. Caldwell  
Michael G. Di'Domenico  
Robert R. Elsasser  
James W. Gahman  
Frederick W. Gilchrist  
C. Audley Gray  
James F. Gregory  
Wallace W. Hall  
Thomas A. Hamilton  
Harry S. Hanna  
James C. Hart  
Charles F. Hill

Scott A. Hoke  
Philip Houston  
Howard I. Jones  
William S. Kjellstrand  
Arthur J. Leisk  
Sherwyn G. Long  
David M. Lum  
John A. Milford  
Edwin T. Monroe  
Jan C. Mosser  
Robert W. Obenour  
James E. Parr  
Niels M. Perkins  
Norman O. Pierce  
John C. Redman  
Roy R. Reed  
Robert H. Ruhl  
Joseph N. Salemi  
R. Thomas Sawyer  
Frank J. Schmidt  
David Schnoerr  
E. Eugene Snyder  
Joseph F. Sower  
Ralph K. Spencer  
Charles F. Tate  
Robert R. Wieland  
Paul R. Wright  
Samuel M. Yanen

## DELTA:

*University of Pennsylvania*  
Robert N. Cron  
John L. Rush

## EPSILON:

*Ohio University*  
A. Parker Beach  
J. Woods Brown  
Paul R. Caraway  
Carl F. Carsten  
Melvin S. Frank  
Leavitt N. Gard  
Robert F. Pancoast  
Eric L. Richardson  
George T. Smies  
Edmund A. Williams

## ZETA:

*Ohio Northern University*  
Richard A. Armstrong  
Russell L. Bunger  
Robert E. Coleman  
Howard R. Craig  
Robert Dieckmann  
Michael A. Grandillo  
Robert Koger  
Frederick A. Kusta  
Steven Ray Liles  
Randy Maltbie  
Karl E. May  
Robert B. Mertz  
Neil Joe Niedhardt  
Paul H. Reid  
Charles H. Runser  
William E. Ruse  
Laverne R. Scranton  
William D. Smitlle  
Charles F. Snyder  
Clare A. Stump  
R. L. Trauger  
Gary L. Weakes  
James B. Wolfe  
Randy L. Young

## ETA:

*Purdue University*  
Seth Aldridge  
Dale E. Amstutz  
Galen E. Baker  
Galen K. Baker  
Glen M. Bernichon  
Robert D. Bremer  
Edward A. Brink  
Mark S. Browning

George D. Budwash  
Kenneth P. Coan  
Joseph S. Columbe  
David S. Demarest  
Dennis L. Dewey  
Steven W. Duncan  
W. G. Eckman  
George M. Etnyre  
John W. Gramelspacher  
Edgar P. Gregory  
Christian B. Hamilton  
Edward C. Harnach  
Kenneth R. Hielscher  
Francis B. Innis  
C. E. Jackman  
John R. Koons  
Scott L. Lasley  
Larry E. Manship  
John P. Mulford  
Donald E. Neal  
Mark R. Nelson  
Frederick W. Nessler  
Ralph E. Nolte  
R. J. Novoryta  
Hubert D. Oldham  
Donald C. Pippel  
Dennis C. Rankin  
Ralph Reath  
Clay M. Rhodes  
J. Lyell Sanders  
Charles A. Schreiber  
Ronald S. Smith  
H. Loy Thompson  
William C. Thornbury  
H. F. Winchell

## THETA:

*Penn State University*  
Ray Alhed  
Edwin J. Andrews  
Frederick H. Bauer  
Wilford B. Beisel  
M. D. Beyer  
Charles S. Bicksler  
William R. Boben  
Thomas J. Bordlemay  
George A. Borsque  
Robert T. Brandt  
W. Capitsky  
C. L. Coldren  
Richard L. Dennis  
John W. Dorrance  
David W. Herr  
Edwin H. Holt  
Edward H. Kennerdell  
Charles B. Koval  
John W. Lado  
John P. Landis  
Howard Marick  
William A. Marks  
Mark May  
David W. McClung  
Robert Nell  
Robert F. Newcomer  
Victor H. Noll  
Michael S. Olsen  
Albert B. Oppermann  
Charles G. Overberger  
Alan I. Renkis  
George H. Rentschler  
James W. Reynolds  
Bradley A. Sell  
Arthur C. Simmons  
Thomas W. Strattan  
William L. Struble  
John P. Williams  
Norman D. Wolff  
Carl E. Zeigler  
John T. Zerbe

## IOTA:

*University of California—Berkeley*  
Victor C. Amerio  
David Scott Brode

Dion M. Cairns  
Michael F. Doan  
Herbert S. Howard  
Bert Howard, III  
Jack E. Hursh  
Whitney Jones  
Ross S. Shade  
Robert A. Stettler  
Burton E. Stitt  
Willard E. Stone  
G. E. Towne  
**KAPPA:**  
*Temple University*  
Robert C. Capello  
LeRoy M. Carl  
G. Kurt Davidyan  
Vincent T. Donnelly  
Richard E. Dunham  
Michael H. Frey  
Wayne M. Hancoch  
Merton H. Houk  
Robert B. Kaplan  
Matthew W. Kinnaird  
Michael A. Koals  
C. R. Lipman  
Clarence E. Long  
David Martin  
Robert D. Mason  
Thomas F. McNeill  
William J. Medve  
Michael F. Messersmith  
James R. Miller  
Michael E. Murphy  
Charles F. Neuhaus  
Joseph J. Sands  
James C. Smith  
John M. Snyder  
Sherman P. Uhler  
Carroll D. Van De Boe

## LAMBDA:

*Kenyon College*  
William L. Culbert  
Harold E. Hyde  
Robert C. Hyde  
Harold Jacobsen  
Mrs. George F. Miller  
Charles Stires

## MU:

*Cornell University*  
Stowell W. Armstrong  
Burnett Bear  
William A. Beddoe  
Craig F. Binetti  
P. Louis Callan  
C. Russell Carr  
Winthrop S. Cody  
Louis J. Conti  
Howard T. Critchlow  
Robert Delaney  
Earle R. Elmer  
Jack A. Feick  
Gregory W. Fisher  
Francis R. Fowler  
Samuel F. Herrick  
John Holden  
James M. Horn  
Bayard Horter  
W. A. Ingersoll  
John W. Lloyd  
Joseph L. Marotta  
Kingsley D. Maynard  
Edward W. Melchen  
Karl F. Miller  
Richard H. Mollenberg  
Walter P. Naquin  
Anton G. Nosek  
John C. Perrollaz  
Gordon Pugh  
Nicholas Reitenbach  
Peter P. Romeo

Michael R. Sfat  
Robert W. Stevens  
Kenneth K. Story  
Jan H. Suwinski  
Elmer J. Tolle  
Benjamin Watson  
Charles E. Wille  
Joseph A. Witzel  
Edward J. Woodhouse

## NU:

*Franklin & Marshall College*  
George D. Bieber  
Donald G. Birrell  
W. James Drennen  
Granville M. Fisher  
John Graybill  
George F. Long  
Robert K. Mattern  
George H. Menzel  
Frank W. Murphy  
William J. Myers  
Peter Pellegrino  
Joseph H. Penrose  
Robert E. Ranck  
Bruce P. Ryder  
William S. Schmidt  
P. Harold Schollenberg  
Richard L. Spangler  
Peter Sprecher  
Kermit L. Summers  
Joseph H. Thatcher  
C. Wayne Troxell  
Simon H. Waugaman  
Herman D. Weeks  
Richard J. Welsh

## XI:

*University of Iowa*  
Hans R. Boehm  
Richard K. Georges  
Tom Grimes  
Jay W. Hamilton  
John W. Heddens  
Glenn F. Hoefing  
Howard L. Kading  
Orion E. Landmark  
Stephen C. Lawler  
Kevin D. Miller  
M. Wayne Oltrogge  
Volney A. Pinkerton  
Karl R. Schafer  
Richard A. Stief  
Steven Jay Tonsfeldt  
Burton W. Wilcke  
William Wilmeth  
Larry V. Wright

## OMICRON:

*Tulane University*  
Arthur A. Calix  
David L. Clary  
William M. Haile  
John Humber  
Thomas J. Lupo  
Richard A. Piske  
Mallory J. Read  
Wesley J. Schroeder  
W. Shewen Slaughter

## PI:

*Utah*  
Ralph V. Backman  
Blayne J. Barton  
James J. Bean  
Stanley M. Bess  
Richard W. Birkinshaw  
John J. Bleymaier  
T. W. Fotheringham  
Ray D. Free  
Benjamin J. Mansfield  
David L. McKay

W. Dennis Merback  
Lorenzo T. Mozley  
Donald C. Pauley  
Jack Salmon  
Dale G. Schulthines

## RHO:

*North Carolina State University—Raleigh*  
Keith H. Baker  
William C. Campbell  
Charles N. Gross  
Thomas E. Hay  
John C. Holbrook  
Jeffrey W. Mincy  
Frederick H. Schmidt  
John Springthorpe  
Lewis E. Tolan  
Hugh A. Williams

## SIGMA:

*Iowa State University*  
Orland D. Branson  
Ellis B. Clough  
Phillip D. Ellingson  
Paul V. Healy  
Clyde C. Hoover  
Edmond H. Luetje  
Sidney S. Mathisen  
Richard McConnell  
Joel E. Nystrom  
John A. Piccolo  
Darrell D. Staley  
Conrad T. Timpe  
Steven A. Tripmacker

## TAU:

*University of Wisconsin—Madison*  
John T. Atwood  
Sam J. Davies  
Alfred Korbel  
Florian G. Schmidt

## UPSILON:

*University of California—Los Angeles*  
Charles W. Bader  
Douglas W. Bastyr  
Rainer Beck  
Dave J. Benson  
C. C. Blakemore  
Donald W. Bullock  
Allan G. Cooley  
Donald O. Cox  
Noah S. Curti  
David S. DeLuca  
Robert M. Doumakes  
Elvin C. Drake  
Fred Faeth  
Robert L. Gifford  
John E. Goodlad  
Willard I. Harriss  
Charles P. Hart  
James C. Hutchison  
Derek J. Jakovich  
Burdell G. Maurer  
Richard E. May  
Peter D. Mysing  
Anthony Orfila  
Bradford F. Parkinson  
Daniel T. Pence  
Bruce L. Peterson  
Louis R. Ravetti  
James R. Ross  
Ralph E. Scott  
Robert A. Seaman  
Andrew D. Shaw  
John W. Thayer  
Frederick T. Thornley  
Clark Wingert  
Donald H. Woodford

## PHI:

*University of Illinois*

Jack Barnett  
 J. William Cameron  
 Brian E. Carey  
 Robert R. Cultra  
 Robert Dannehl  
 B. Haddon Davenport  
 John O. Denson  
 Vincent T. D'Orazio  
 William A. Duch  
 Stanley R. Felderman  
 Charles E. Finn  
 Everett Fitzjarrald  
 Robert L. Gallo  
 John L. Gregg  
 Norbert E. Gygan  
 John T. Hague  
 Thomas A. Hannagan  
 Ralph E. Hedgcock  
 Gary Heise  
 Stanley H. Holmes  
 Wayne M. Johnson  
 Peter W. Kirch  
 Clarence M.  
 Kretchmer  
 Robert W. Leonard  
 Robert E. Luetje  
 Peter J. March  
 Edward C. Maxwell  
 John W. Meyer  
 Frank T. Nickels  
 Robert J. Oie  
 Frank C. Pfister  
 Earl G. Ruesch  
 John L. Schmidt  
 James W. Schrodt  
 Gerald E. Schultz  
 Louis W. Schumm  
 Harry Siebold  
 F. A. Singleton  
 Albert W. Statkus  
 David M. Terwell  
 J. N. Valbert  
 Ray Wales  
 Elwyn F. Wightman  
 Lewis B. Wilson  
 Mark A. Wisthuff  
 Gregory M. Witt  
 Lawrence S. Wolfson

**CHI:**  
*Pittsburgh*  
 Byron A. Baur  
 Daniel H. Bee  
 Michael Bilirakis  
 Charles M. Booher  
 Robert L. Davis  
 C. Lloyd Deffenbaugh  
 Samuel G. Fisher  
 Theodore K. Heess  
 Spero E. Moutsos  
 Samuel E. Neely

**PSI:**  
*Emory University*  
 Ernest M. Allen  
 Thomas J. Amason  
 H. (Jack) Barker  
 Richard F. Beckman  
 Earl U. Brinson  
 Earl R. Canfield  
 M. Rodney Culler  
 James R. Flournoy  
 Thomas L. Gresham  
 Russell S. Grove  
 Murl M. Hagood  
 William R.  
 Hutchinson, Jr.  
 Duval M. Meier  
 H. Prentice Miller  
 Clifford Oxford  
 Harold W. Peavy  
 Charles L. Pickell  
 James B. Pruitt, Jr.  
 Randolph A.  
 Richardson  
 George M. Ricketson  
 Waldo F. Roescher  
 John Rooney, Jr.  
 Charles H. Smith

Frank Vinson  
 W. E. Vinson  
 S. James Von Hollen  
 L. Harden Webb  
 Greenville D. Wood  
 James D. Yeager

**OMEGA:**  
*Oregon State University*  
 Gordon A. Bigelow  
 Stanley J. Gilmore  
 John R. Godman  
 Dennis Heikes  
 Richard W. Henzel  
 Douglas E. Huff  
 Parker Hurlburt  
 Matthew K. Larsen  
 John L. Sanderson  
 Edgar A. Weis

**ALPHA-BETA:**  
*Michigan*  
 Leigh H. Jackson

**ALPHA-GAMMA:**  
*University of Washington*  
 Theodore R. Anderson  
 George W. Cloud  
 Stanley P. Seddon  
 P. Don Smith  
 Richard M. Thatcher  
 Elbert C. Turner  
 J. Knox Woodruff

**ALPHA-DELTA:**  
*Auburn University*  
 Jeffrey Angermann  
 John H. Beville  
 James R. Bullington  
 Laurence H. Burger  
 Jack L. Capell  
 Richard L. Childs  
 James J. Cook  
 Michael R. Crain  
 Thomas F. Davidson  
 John C. Donehoo  
 George R. Goodwin  
 Clint W. Hall  
 Ludlow B. Hallman  
 Henry B. Hene  
 Paul C. Hene  
 Clarence H. Hornsby  
 James B. Leslie  
 Richard A. Little  
 John L. Mullins  
 Rolf W. Neubert  
 John E. Payne  
 Bobby E. Pierce  
 William P. Shealy  
 Milton S.  
 Umbenhauer  
 John A. Ward  
 Martin R. Wells

**ALPHA-EPSILON:**  
*Mercer University*  
 Charles Anderson  
 Howard J. Bivins  
 George W. Hulme  
 Samuel J. Welsch

**ALPHA-ZETA:**  
*St. Lawrence University*  
 William Andes  
 Robert C. Armbruster  
 Robert P. Baird  
 William D. Barnard  
 Bruce Boss  
 Arthur B. Canfield  
 Robert J. Daly  
 W. Davison  
 Norville M. Downie  
 J. A. Finch  
 Thomas R. Foster  
 Stephen J. Graham  
 John M. Heffner  
 Andrew W. Kaye  
 Bryce Lockwood

Lawrence C. Macrow  
 Brian R. McMurray  
 James E. Pillars  
 Curtis C. Reinhold  
 Francis C. Seely  
 Raymond (Mac)  
 Shimmon  
 James W. Smithers  
 David M. Stabins  
 Stephen K. Wallender  
 Lawrence M. Witte

**ALPHA-ETA:**  
*College of William & Mary*  
 S. Othello Batten  
 Emil L. Cekada  
 Arthur D. Chambliss  
 Walter D. Hoffman  
 Jamie Kendrick  
 James M. Lyle  
 Edward F. Pool  
 C. Forrest Sinclair  
 Lorimer G. Walker  
 Arthur J. Winder  
 Robert L. Fraysse  
 Micahel J. Havrilla  
 John R. Heydt  
 Dewey Hobbs  
 John T. Humphrey  
 William J. Jeffress  
 John E. Maxwell  
 Michael S.  
 McTammany  
 Louis J. Pegram  
 L. Julius Pinkston  
 John A. Ratliff  
 Ted G. Stone  
 Carroll D. Swenson  
 John L. Thompson  
 Bruce Warrington  
 John D. Young, Jr.

**ALPHA-OMICRON:**  
*University of California—Santa Barbara*  
 Richard I. Church  
 Arthur E. Engel  
 Donald N.  
 Fredericksen  
 Robert D. Houlsby  
 Raymond R.  
 Piantanida  
 Kenneth E. Trevey

**ALPHA-PI:**  
*Arkansas State University*  
 G. Robert Blanchard  
 Mark S. Briscoe  
 Dennis R. Fletcher  
 Robert B. Gray  
 Donald J. Houchin  
 Pat Lea  
 Richard McHaney  
 L. Jerry Sallee  
 George R. Sansoucy  
 Gordon Simpson  
 Dallas C. Wood

**ALPHA-RHO:**  
*Southwest Missouri State University*  
 William D. Baker  
 Jerry R. Black  
 Mark Bogucki  
 Kenneth M. Burk  
 Harold D. Ezell  
 Ellis L. Hefner  
 David L. Hilton  
 Marshall P. Jennings  
 Glen D. Lupardus  
 Bart D. Mix

**ALPHA-SIGMA:**  
*Arkansas*  
 Hermann Ivester  
 Don M. Little  
 R. L. Martin

Byron D. Neal  
 Donald C. Pullen  
 Dennis R. Young

**ALPHA-TAU:**  
*University of Southwestern Louisiana*  
 Wilton L. Bergeron

**ALPHA-UPSILON:**  
*University of Rhode Island*  
 Paul S. Boorujy  
 Arthur W. Gruhn  
 David W. Jacobs  
 Eugene P. Kachele  
 Donald W. Kennedy

**ALPHA-PHI:**  
*University of Georgia*  
 Harold G. Barfield  
 Michael E. Brown  
 Michael C. Bushaw  
 Jimmy Camp  
 Edward E. Gregory  
 George H. Kreeger  
 Richard A. Lillie  
 Stephen F. Lorys  
 Norvel M. McClung  
 Thomas M.  
 McConnell  
 David A. McCoy  
 Robert W.  
 Montgomery  
 Holy B. Puckett  
 Forest L. Raven  
 George M. Riley  
 Hal Scott  
 Jerry L. Stepp  
 Claude E. Terry  
 Frank Van Haltern  
 Arthur M. Wallace  
 Claude C. Wills

**ALPHA-THETA:**  
*Beloit College*  
 Roy J. Cibulk  
 James E. Edwards  
 Kenneth W. Lawver  
 Robert B. Millard  
 Edwill H. Pritchard  
 Thomas P. Wildman

**ALPHA-IOTA:**  
*University of Missouri—Rolla*  
 W. A. Baker  
 John R. Becker  
 Lawrence M. Becker  
 John M. Berger  
 John E. Hummel  
 Raymond J. Kopsky  
 Greg Little  
 Randall J. Lubbert  
 Blayne E. Mayfield  
 Dale Murry  
 Walter E. Mussell  
 Robert L. Niehaus  
 Jeff R. Ramberg  
 John P. Soult  
 Richrd M. Taylor  
 Billy J. Thompson  
 Lauren P. Tuttle  
 B. E. Weidle  
 Donald J. Zeitinger

**ALPHA-KAPPA:**  
*Louisiana State University*  
 John H. Dore  
 Robert A. Fontenot

**ALPHA-MU:**  
*New Jersey Institute of Technology*  
 Richrd Alford  
 John C. Alpaugh  
 Robert E. Anderson  
 Anthony Azzizzo  
 George M. Baskinger

## TOP TEN CHAPTERS (Total Number Contributors)

1. GAMMA  
Ohio State University
2. ALPHA-MU  
New Jersey Institute of Technology
3. PHI  
University of Illinois
4. ETA  
Purdue University
5. MU  
Cornell University
6. BETA-OMICRON  
California State University—Long Beach
7. THETA  
Pennsylvania State University
8. UPSILON  
University of California—Los Angeles
9. BETA  
Indiana University
10. EPSILON-NU  
California State University—Fullerton

# THANKS

## TOP TEN CHAPTERS (Total Dollars Contributed)

1. GAMMA  
Ohio State University
2. ALPHA-MU  
New Jersey Institute of Technology
3. ETA  
Purdue University
4. PHI  
University of Illinois
5. BETA-OMICRON  
California State University—Long Beach
6. BETA-GAMMA  
Eastern Illinois University
7. MU  
Cornell University
8. THETA  
Pennsylvania State University
9. UPSILON  
University of California—Los Angeles
10. ALPHA-DELTA  
Auburn University

Dennis Berman  
Arthur R. Bird  
Donald D. Burtis  
Edwin R. Campbell  
Robert L. Criswell  
James V. DeTitta  
Vincent F. Difiini  
Joseph C. Durie  
Robert C. Eisele  
Steve Fronapfel  
Richard W. Garratt  
Glenn R. Geardino  
Frank K. Harwood  
William Hazell  
Anthony John  
Headman  
Robert G. Kinzler  
Jan K. Knapik  
Curt R. Koepfen  
Richard J. Kubicka  
Bennett J. Leichter  
Arthur L. Lewis  
Harry F. Loeser  
Clyde H. MacFarlane  
David H. Mangnall  
James B. McGrath  
Godfrey J. Moll  
Leo J. Pflug  
Mark J. Piotrowski  
Martin J. Rissland  
Arthur J. Rittweger  
Edward W. Rogers  
Steven G. Schaeber  
Edward Schnepel  
Brian Searls  
Ellis W. Sharadin  
Frederick Stober  
Alvin J. Stoeckert  
Lawrence Swartz  
Robert W. Van  
Houten  
Joseph B. Vautier  
Frank Vigh  
Paul R. Vom Eigen  
Thomas Woodruff

**ALPHA-NU:**  
*Wake Forest  
University*  
Charles Abell  
Thomas M. Aquino  
Bernard G. Brophy  
Cornelius E. Bullock  
George P. Coghill  
W. Preston Cole  
Dean W. Coulopoulos  
Robert L. Davis  
John F. Dimmick

**ALPHA-CHI:**  
*University of  
Maryland*  
W. J. Blaha  
Michael K. Fitzgerald  
Thomas G. Harris  
Bruce S. Hoffberger  
Charles L. Johnson  
Mark Levin  
Bruce F. Macrae  
Stephen H. Majors  
John L. Pensinger  
Paul N. Singer

**ALPHA-PSI:**  
*Utah State University*  
Fred Brown  
Weldon M. Hyer

**ALPHA-OMEGA:**  
*San Diego State  
University*  
Curtis Ensign  
David W. Giannotti  
John Manobianco  
George B. McGrady  
James P. Robertson,  
Jr.

**BETA-KAPPA:**  
*Arizona State  
University*

**BETA-GAMMA:**

*Eastern Illinois  
University*  
Roger K. Baker  
Thomas J. Beissel  
Robert W. Detrich  
James L. Dillier  
Philip R. Doster  
John R. Duncan  
Mark A. Fleshner  
Jerry L. Gilbert  
Garrett R. Graham  
Rob Hassels  
Gerald W. Huot  
Stephen Kelly  
Jeffrey P. Knezovich  
Thomas L. Lawrence  
Timothy J. Loftus  
William J. MacMinn  
Thomas W. McDaniel  
Clark Nelson  
J. Craig Nelson  
Randolph R. Pingree  
James P. Poneta  
David R. Reeves  
Thomas J. Rymarz  
Ronald D. Tredennick  
John K. Walsh  
David D. Winters  
Donald J. Wisthuff  
Thomas A. Zelasko  
Brian Zilinskas

**BETA-ZETA:**  
*Miami University,  
Florida*  
Henry F. Sawicki  
Frank R. Slivocka

**BETA-ETA:**  
*San Jose State  
University*  
Charles M. Barrena  
Charles C. Butler  
Stephen Caplan  
Craig Hutchings  
Robert E. Kircher  
Bobby D. McKee  
Fredric M. Schmitka

**BETA-THETA:**  
*Drexel University*  
Albert B. Baikauskas  
Chester E. Balut  
Gregory Bentz  
Philip R. Brinkheide  
Gordon C. Callaway  
P. J. Charlton  
Dennis D. Cirucci  
Roy H. Cornely  
Ellison L. Davison  
Anthony J. Gallagher  
Kevin D. Gazzara  
Dale R. Glatfelter  
Gregory E. Kist  
Edmund A.  
Markowski  
John C. Nurney  
John T. Poprik  
Peter Senholzi  
Stanley S. Senius  
Peter L. Shaffer  
Robert C. Steinman  
Ralph W. Stowell  
James O. Stutz  
Richard C. Westhofen

**BETA-IOTA:**  
*Northern Arizona  
University*  
Bradley W. Carlyon  
Curtis Ensign  
David W. Giannotti  
John Manobianco  
George B. McGrady  
James P. Robertson,  
Jr.

**BETA-KAPPA:**  
*Arizona State  
University*

Donald E. Morris  
Ray L. Stephan  
**BETA-LAMBDA:**  
*Lycoming College*  
Carl W. Heide  
John W. Snyder  
Richard D. Wilson  
**BETA-MU:**  
*University of  
Mississippi*  
Patrick J. Cavanaugh  
Allen D. Lantz  
Marc Palmer  
Carl V. Tanner  
James S. Verplanck

**BETA-NU:**  
*Southern Illinois  
University—  
Carbondale*  
David L. Fabian  
Robert E. Hall  
Richard I. Kean  
Robert B. Lahlein  
Dan Lanno  
H. Terry Monroe  
Ronald A. Niemann  
Thomas D. Rotramel  
James R. Skokan  
Frederic B. Starr  
Donald A. Stork  
S. Lane Wilson  
Michael R. York

**BETA-XI:**  
*New Mexico State  
University*  
James L. Caughren  
Richard J. Force

**BETA-OMICRON:**  
*California State  
University—Long  
Beach*  
Jeffrey S. Arnold  
Gregory E. Baker  
Richard M. Bemis  
Thomas Bradley  
Bobby S. Bridwell  
James R. Dirmann  
Stephen M. Dumalski  
Brook G. Foley  
Danny Fujimori  
Robert C. Gau  
Tom Gau  
Gerald J. Harvey  
Robert Herron  
Julius G. Kanasi  
Thomas A. Leever  
David B. Lindsay  
Martin E. Lundi  
Douglas A. Maher  
James Mahoney  
Kenneth A.  
Mayginnes  
John McDowell  
Frank R. Newell  
Thomas J. Nixon  
Robert B. Parsons  
Andrew R. Pearson  
John Rance  
John V. Rastello  
David W. Robinson  
David J. Ruyle  
Michael K. Ryan  
Neil G. Stampe  
Edward G. Thompson  
Gary L. Tyer  
William W. Vandruuff  
Stephen A. Whitacre  
Leslie Whittlesey

**BETA-PI:**  
*University of Virginia*  
John B. Crostic  
Frank C. Flippo, Jr.  
Forrest W. Hunter  
Barry K. Miles  
James W. Reid

James A. Rolls  
Kevin M. Sims  
Thomas Smidt  
Glenn Strohl  
**BETA-RHO:**  
*Atlantic Christian  
College*  
James P. Hicks  
George T. Pippin  
Al W. Richardson  
David J. Rose  
Robert M. Steen  
Mike Worsham

**BETA-SIGMA:**  
*Northern Illinois  
University*  
Larry C. Adkins  
Wesley A. Caine  
David D. Daly  
James H. Davison  
William A. Edgar, Jr.  
Jules Marut  
Peter Roknich  
Kenneth E. Stobart  
Alan Travis

**BETA-TAU:**  
*Valparaiso University*  
Albert J. Fischer  
Vincent H. Galbiati  
Gerald L. Heinz  
John H. Hirsch  
Rudolph M. Jabs  
Metcalf, Kenneth A.  
Philip A. Saubert  
Mark Schmidt

**BETA-UPSILON:**  
*Shippensburg State  
University*  
Karl M. Gable  
Thomas B. Gross  
Joseph R. Mills

**BETA-PHI:**  
*Rochester Institute of  
Technology*  
Willis B. Barley  
James R. Berndt  
Howard S. Beye  
Scott J. Brown  
Christopher Carlson  
James J. Crouch  
Gerald A. Grossman  
Alan Kurtzman  
Robert McLellan  
Michael J. Nesbitt  
Tim Rooney

**BETA-CHI:**  
*Loyola University—  
Chicago*  
Joseph F. Grewenig  
James M. Heller  
James R. Kolasinski  
Dennis Koziol  
Michael S. Kuzlik  
William D. Parazin  
Ronald F. Reter

**BETA-PSI:**  
*East Stroudsburg  
State University*  
George G. Badame  
Sandy L. Burkart  
Kenneth F. Davis  
Jeffrey D. Drace  
Kevin M. Gavin  
Robert W. Naismith

**BETA-OMEGA:**  
*Lock Haven State  
University*  
Steven L. Brouse  
Michael F. Clover  
Sean M. Elinsky  
Fred Fryer  
David C. Glossner  
Clair A. Goodman  
Geoffrey A. Jones

James Petersen  
Stephen Piper  
Mahlon I. Schlegel  
Nelson B. Silverstrim  
Joe Zmuida

**GAMMA-ALPHA:**  
*University of Detroit*  
David N. Barilovich  
Bruce M. Carrico  
James A. Clemens  
Kenneth C. McCrory  
Ronald P. Panasiewicz  
David W. Schervish  
Robert J. Sikorski  
Anthony J.  
Widenman  
James J. Williams

**GAMMA-BETA:**  
*Eastern Michigan  
University*  
William R. Korbelak  
Raymond Stefanac  
Richard W. Turnquist

**GAMMA-GAMMA:**  
*Central Missouri  
State University*  
Bruce D. Ballard

**GAMMA-DELTA:**  
*Slippery Rock  
University*  
Richard L. Allen  
James S. McBride

**GAMMA-EPSILON:**  
*Fairmont State  
College*  
Jack A. Bell  
Gale P. Bentz  
Scott Bouit

James R. Brooks  
James R. Crace  
Mark W. Elbon  
Rocco Fucillo  
Tom Harrington  
Michael R. Hyman  
John E. Mariner  
William R. Swan  
Frederick J. Tawney  
Dennis Van Gilder  
Michael A. Williams  
Michael N. Wilson

**GAMMA-ZETA:**  
*Parsons College*  
Joe Martillotta  
Robert W. Mason  
Ronald W. Straley

**GAMMA-ETA:**  
*Rutgers State  
University*  
Vincent P. Celli  
Edward Chempiel  
James F. Fisher  
Richard Gallagher  
Gerald A. Gamlin  
Robert Goldstein  
David Gutin  
Welling C. Howell  
Steven J. Jozwiak  
James J. Kiely

Joseph M. Lo Porto  
Steven R. Magidson  
George Maresca  
David Palmquist  
William B. Richko

**GAMMA-THETA:**  
*Texas  
Klasing*

**GAMMA-IOTA:**  
*Worcester  
Polytechnical  
Institute*  
Peter Abend  
Kenneth Beyer

Mario P. Digiovanni  
Mark R. Lanciault  
John S. Mazur  
John R. Simonds  
James H. Sweeney  
Robert Wadja  
Thomas L. Weaver  
John W. Zelz

**GAMMA-KAPPA:**  
*Indiana Institute of  
Technology*  
Richard E. Buehner  
Harold G. Burkett  
Joseph A. Bush  
Orrin B. Mac Murray  
Thomas J. Minnella  
Scott R. Spooner  
Dennis Uhlik

**GAMMA-MU:**  
*University of  
Wisconsin—Oshkosh*  
Paul G. Cisler  
Steven R. DeGrave  
Ralph T. Gibson  
Robert H. Hernke  
Steven C. Mathews

**GAMMA-NU:**  
*University of Akron*  
Richard W. Ashley  
Ronald J. Gajewski  
Richard A. Lilley  
Paul E. Lowe  
Ronald R. Winer

**GAMMA-XI:**  
*West Virginia  
Institute of  
Technology*  
Daniel E. Artis  
Charles E. Bolyard  
Richard H. Borum  
Thomas D. Curry  
Patrick Frazer  
Richard W. Houchins  
Robert J. Jilla  
Callie W. O'Dell  
Dennis A. Urbas  
James H. Young, Jr.

**GAMMA-OMICRON:**  
*Findlay College*  
Norman C. Emmets

**GAMMA-PI:**  
*Indiana State  
University*  
Ronald P. Binkley  
Walter R. Botich, Jr.  
Mike Hayes  
Dean A.  
Hemmersbach  
Richard M. Ritz  
William L. Wagner

**GAMMA-RHO:**  
*Western Michigan  
University*  
Gregory C. Conant  
Michael P. Hatty  
Phillip K. Johnson  
David J. Ortner

**GAMMA-SIGMA:**  
*University of  
Missouri—Columbia*  
Brian R. Akerson  
Thomas A. Hanaway  
Craig J. Kessler  
William R. Knepler  
Mike McKee

Brian V. Morris  
William B. Mozo  
Clinton L. Tennill  
John W. Thousand

**GAMMA-TAU:**  
*Georgia Southern  
College*  
Kenn W. Johnson  
William D. Krenson

**GAMMA-UPSILON:**  
*Murray State University*  
Mark T. Busche  
Kirk D. Haffler  
Louie W. Junkerman  
Ray Mofield  
Larry G. Ruff  
Bruce Tolley  
Patrick A. White

**GAMMA-PHI:**  
*University of Wisconsin—Whitewater*  
Jeff Butler  
David P. Espen  
William T. Onsgard  
James K. Tennant  
Gregory C. Van Wie

**GAMMA-PSI:**  
*St. Louis University*  
David A. Cole  
Ronald E. Lind  
Robert W. Schafermeyer  
G. Mark Schoen  
Paul L. Starr  
Anthony G. Ternak  
John C. Tittle

**GAMMA-OMEGA:**  
*Wayne State University*  
John B. Gluckert  
Michael J. Stender

**DELTA-ALPHA:**  
*Central Michigan University*  
Mark A. Bailey  
Matthew J. DeWan  
Barry E. Johnson  
Michael G. Knapp  
William J. R. Myers  
Donald C. Schurr  
Michael J. Shaw  
Gary A. Straus

**DELTA-BETA:**  
*Monmouth College*  
Stanley A. Sharaga

**DELTA-GAMMA:**  
*Milton College*  
Richard R. Barnard  
Robert Chanson  
Jerald T. Poweleit  
Robert P. Sanford

**DELTA-EPSILON:**  
*Seton Hall University*  
John Dennehy  
Michael E. Kelly  
Robert S. Zajac

**DELTA-ZETA:**  
*University of Missouri, St. Louis*  
Kevin B. Eddington  
Gerald W. Grindler  
Lester V. Hager  
Thomas J. Sapienza  
Earl Voss  
Gregory Webb

**DELTA-THETA:**  
*Corpus Christi*  
Dennis R. Bianco  
Richard F. Tracy

**DELTA-IOTA:**  
*University of Wisconsin—Platteville*  
Dale Folwarski  
Randal S. Viney

**DELTA-LAMBDA:**  
*Louisiana Tech University*  
Gary L. Calligas  
Steven Sorgenfrei  
Earl Vicknair

**DELTA-MU:**  
*Salem College*  
John D. Folsom  
Anthony C. Santangelo  
William C. Welch

**DELTA-NU:**  
*Ball State University*  
William D. Critell  
Eugene T. Goss  
Gary Lucas

**DELTA-XI:**  
*S. Utah State College*  
Stephen A. Jones

**DELTA-RHO:**  
*Morehead State University*  
Kevin M. Arave  
Mark J. Middleton  
Kevin Peak  
James W. Reynolds  
Gary D. Stump  
Calvin R. Tackett  
Timothy J. Wendt

**DELTA-SIGMA:**  
*University of Wisconsin—Stout*  
Kurt L. Bents  
Alfred A. Grabowski  
Dan Stewart

**DELTA-UPSILON:**  
*Virginia Polytechnical Institute*  
David L. Stocker

**DELTA-PHI:**  
*University of Wisconsin—La Crosse*  
Shon O. Doyle

**DELTA-CHI:**  
*Western State College, Colorado*  
Michael E. Burns  
John D. Clark

**DELTA-PSI:**  
*Troy State University*  
Sidney E. Baker  
Charles Head  
Thomas W. Head  
Charles C. Simmons

**DELTA-OMEGA:**  
*Southern Illinois University—Edwardsville*  
Jon B. Laughlin  
John F. Schrage  
Jeffrey C. Standerfer

**EPSILON-ALPHA:**  
*Southern Technological Institute*  
Weems R. Young

**EPSILON-BETA:**  
*University of Kentucky*  
Vernon C. Badham  
Roger Black  
Marcus D. Canada  
James F. Carrico  
Ronald C. Stephens

**EPSILON-GAMMA:**  
*Illinois Wesleyan University*  
Charles F. Deffenbaugh  
Jack C. Fields  
Michael W. Frieden  
Mark D. Gibson  
Bruce G. Howell  
Gregg A. Jones  
Stanley A. Packard  
Robb Lee Robison  
Bruce Storey

**EPSILON-DELTA:**  
*Columbus College*  
Richard Stevens

**EPSILON-ZETA:**  
*Western Illinois University*  
David A. Higgins  
Kenneth J. Kaupas  
Gregory F. Kubik  
Kirk C. McKinzie  
Mark A. Metz  
Eric S. Pistorius  
William J. Rogers  
Gary D. Schuchmann  
Daniel H. Swanson  
Steven L. Vanne

**EPSILON-ETA:**  
*Illinois State University*  
Roland E. Himes

**EPSILON-THETA:**  
*Elon College*  
Shea Teague  
Wally Vinson  
C. Grayson Whitt

**EPSILON-IOTA:**  
*California State University—Northridge*  
Bill Imada  
Stanford Lau  
Jay S. Mangel  
George R. Perez

**EPSILON-KAPPA:**  
*Southern Arkansas University—Magnolia*  
James G. Cozart  
David M. Hill  
Bo Plyler  
John (Larry) Smart

**EPSILON-LAMBDA:**  
*Eastern Kentucky University*  
Robert L. Keith  
Ronald L. Miller

**EPSILON-MU:**  
*James Madison University*  
Bobby R. Boggs  
Alan R. Mays  
James A. Nogle  
Douglas M. Smith

**EPSILON-NU:**  
*California State University—Fullerton*  
Joseph E. Amatisto  
Arthur Blais  
James M. Blewett  
John E. Burg  
Frank P. Conway  
Joseph W. Conway  
William B. Corbin  
Thomas P. Curran  
Darrell J. Edquist  
Theodore P. Flati  
Jeffrey Gahring  
David E. Geyer  
Edward F. Gogin

Gregory P. Haenni  
Thomas W. Hoban  
Michael D. Hogan  
J. Michael Ibarra  
Michael M. Kebre  
Robert W. Keyes  
Michael K. Kim  
David B. La Pointe  
Michael L. Martin  
Donald G. McCune  
Michael R. McDonald  
David T. Meis  
David P. Michelle  
William P. Mooney  
Bruce A. Pansky  
Howard L. Poulsen  
Scott E. Ryder  
Thomas K. Tellez  
Timothy L. Thompson  
David J. Tosches  
Frank J. Weber

**EPSILON-XI:**  
*Fairleigh-Dickinson University*  
Howard H. Hamilton

**EPSILON-OMICRON:**  
*State University of New York—Buffalo*  
Jay M. Dean  
Raymond A. Kuehnel

**EPSILON-PI:**  
*Christopher Newport College*  
William H. Corbett  
Thomas M. Hall  
Robert J. LaVerriere

**EPSILON-TAU:**  
*University of Tennessee—Martin*  
Patrick R. Taylor

**EPSILON-UPSILON:**  
*University of California—Davis*  
Kris K. Reuter

**EPSILON-PHI:**  
*Widener University—Delaware*  
James R. Kress

# ALUMNI CLUB NEWS

## KAPPA ALUMNI CLUB TEMPLE UNIVERSITY PHILADELPHIA, PENNSYLVANIA

The Kappa "old timers" held their fifth reunion in April at the Ponce de Leon Hotel in St. Petersburg, Fla. Next year it is planned for the Seabring area. Five newcomers attended: Mike Murphy, Dave Martin, Red Van De Boe, Jim Smith and Ray Brady, plus wives. After a 50-year hiatus, they were heartily greeted by Bo Capello, Burt Ward, Hal McKee, Si Class, Austin Kern, Bill Bishop and spouses.

Several regulars did not attend this year due to unforeseen obstacles. It is hoped the next reunion will total at least 20 brothers.

## GAMMA-SIGMA HOUSING CORPORATION UNIVERSITY OF MISSOURI, COLUMBIA COLUMBIA, MISSOURI

Once again, Gamma-Sigma alumni have been very active. The Gamma-Sigma Alumni Housing Corporation recently elected two new officers to serve four-year terms. Mark Burkhart was elected president and Keith Crecilius, vice president. Ken Crecilius is currently treasurer and Eddie Hamill, secretary. The housing corporation now numbers 25. The corporation's primary function is to maintain the 40-man chapter house through house improvements and supervision.

Alumni assisted the chapter in two rush functions this year. Alumnus Har-

ry Trimble has begun a yearly tradition by renting out the Cardinal Room at the stadium during a St. Louis Cardinal baseball game. Alumni, undergraduates and rushees all had a great time!

Alumni also started something new to assist in rush, Sigma Pi Night. Rushees and their parents are invited to attend an evening get-together at a St. Louis hotel with alumni and chapter members. A slide show presentation is given on the University of Missouri, Gamma-Sigma Chapter and the international organization of Sigma Pi.

Lastly, thanks to all alumni who supported me in my eight years as president of the housing corporation. Let's all support Mark in his new position. Fraternaly, Jay Joern.

# THE EMPTY CHAIR

## Its the Chapter Director's

## And When It's Empty,

## There

## Are Going to be Problems



By Evin C. Varner

It sits there, empty, at too many meetings of Sigma Pi chapters.

Its the chapter director or advisor's chair. And that vacant chair is a big threat to the growth and development of Sigma Pi Fraternity today.

Where it's filled, chapters are healthy, stable and growing; members are enjoying and learning from their Sigma Pi experience.

Where it's empty, there are problems. And that chair is empty in several of our Fraternity's chapters.

With a third to a fourth of a chapter's membership changing every year, an advisor is vital for continuity. A chapter is a complex, living, fluid organization. It needs on-the-scene guidance to achieve its full potential. Without an advisor, the impact of national programs, manuals, materials and annual consultation visits is often lost.

Shelley Sutherland, Greek advisor at Indiana State University, and past president of the Association of Fraternity Advisors, sounded a warning to the Greek system when she stated "With travel costs reducing national staff field work, the role of the chapter advisor becomes critical to the future of the system."

Why haven't more Sigma Pi alumni come forward to help? Perhaps because they haven't been asked.

Sigma Pi has been aggressively trying to find and recruit advisors where it

can. Sadly, the Fraternity is often having to turn to non-members.

"You may see an advisor listed for a chapter," says the executive director of one national fraternity, "but don't let that stop you from volunteering. We have prevailed upon many to remain because no suitable replacement has come forward. Or it may be a case of an advisor in name only."

Many chapters could use multiple advisors—a financial advisor, operations advisor, a housing advisor, and an alumni liaison advisor. This "advisor pool" reduces individual workload and can increase effectiveness in each area.

But the ideal and the real are far apart. And it is a concern. Wilford A. Butler, CAE, executive director of Delta Upsilon Fraternity says: "Please don't wait to be asked to help your chapter; they might die during the wait."

### What Is A Chapter Director?

A friend. Someone who believes in young people and will offer the benefit of his common sense and experience.

A chapter director is not a dictator. The major role is to offer advice, when it is requested and when it is critical the chapter hear it. Those two situations do not always occur simultaneously. Undergraduates often make decisions without the experience to consider liabilities or ramifications. The chapter director is there not to make the decision but to make sure all issues are consid-

ered. One of the greatest advantages of membership in Sigma Pi is leadership experience. A good advisor bites his tongue to let a group learn from mistakes—but gauges the potential impact of a mistake and intervenes when necessary.

A chapter director is a role model—a living illustration of the fact that fraternity continues after graduation and the values and principles taught in the chapter have a very real application in the everyday world. A chapter director helps the chapter see the world beyond their own campus—in terms of fraternity, in terms of life.

A chapter director is a resource, not just an authority. He is a counselor, available to turn to when an individual or the group has need.

---

*Bio: The author is editor of "The Tomahawk" of Alpha Sigma Phi and is self employed in the communications industry.*

---

### Why Be A Chapter Director?

The pay is lousy. The job can be frustrating. It takes some time (not necessarily a lot: an hour or two a week). The consistency of building rapport and providing continuity are greater measures of effectiveness than time investment.



The motivation of many chapter directors is loyalty to the Fraternity—they want to see Sigma Pi continue and grow, they want to “pay back” something received, often, because a chapter director was there.

The American College Personnel Association asked undergraduate leaders to rank functions most important for their chapter director or advisor. The results are interesting:

1. To provide advice when called upon.
2. Teach techniques of good leadership and fellowship.
3. Provide continuity with the history and tradition of the group.
4. Help members develop self discipline and responsibility.
5. Prevent the group from breaking university rules.
6. Supply the organization with information, expert knowledge and insight gained through experience.

Barbara Robel, advisor for Greek affairs at Kansas State University, suggests being an advisor is an opportunity to stay in touch with the college generation, to know first hand what the perceived issues and concerns are. She says: “The position is one of the few jobs that will turn one’s hair gray while keeping a person young.”

Chapter directors receive different types of rewards. Seeing a group respond and improve. Helping with career choices. Years later having individuals they’ve worked with call to announce a marriage, a birth or a personal success, and to say “thanks.”

One chapter director (to a men’s fraternity) expressed his reactions in a very personal manner: “A shocking percentage of our young brothers today come from broken homes. Many have never identified with an adult figure. Many have had little training in managing their lives or anything else.

The campus can be a pretty cold, impersonal place. The campus may provide some highly-trained professionals for them to turn to, but they’re not comfortable with them. They’re comfortable at the Fraternity. And with me. They know I care. I may not be highly-trained, but I’ve kept an awful lot of kids in school, kept a lot from making serious mistakes. I’ve had a lot turn to me with some pretty startling personal problems and together we’ve handled them.

As a fraternity advisor, I’ve changed lives in a way I couldn’t do anywhere else. What do I get in return? Love. And brotherly love is what it’s all about, isn’t it?”

It is indeed.

There’s an empty chair waiting.

It’s just your size.

“Undergraduate officers tell us that their single most pressing problem is the need for more alumni advice and assistance. Undergraduates aren’t perfect; their organization often doesn’t provide the best leadtime in planning alumni events, and you may come back to the chapter house and be “turned off” by the lack of housekeeping, but don’t make fast judgments. Remember when you were in college . . . was the chapter house spotless . . . was it really? Or is that just the warm, wonderful way in which you like to remember it?”—Bill Butler, Executive Director, Delta Upsilon Fraternity.

Barbara Robel, Advisor for Greek affairs, Kansas State University, provides this funny-but-serious profile of a successful chapter advisor.

- Must be able to bite tongue frequently and effectively.
- Must have good eyesight and be able to distinguish a mountain or a molehill at 50 paces every time.
- Must have a tough hide, for he will frequently take the brunt if things go wrong.
- Must have an adjustable hearing aid and be able to tune out stereos during a serious conversation, yet be able to pick up slightest rumblings of chapter unrest.
- Must have flexible timetable, for many meetings and serious crisis will occur between 11 p.m. and 4 a.m.
- Must have complete set of fingernails, which are helpful for biting during chapter meetings.
- Must have a relatively poor memory, and never begin a sentence with “When I was in the chapter . . .”



## Sigma Pi Chapter Directors

Alpha  
E. Andrew Morris  
Beta  
Gilbert Mascher  
Gamma  
Jack R. Curtis  
Zeta  
Ward Wildman  
Eta  
David Tate  
Theta  
Thompson Paul Harner  
Iota  
Thomas W. Harris, III  
Kappa  
LeRoy (Lee) M. Carl, Ph.D.  
Xi  
Leon Spies  
Rho  
Les Thornbury  
Phi  
Bruce Guither  
Omega  
Matthew K. Larson  
Alpha-Beta  
Curt Carson  
Alpha-Gamma  
Jim Cameron  
Alpha-Delta  
George R. Goodwin  
Alpha-Iota  
Blayne E. Mayfield  
Alpha-Mu  
Steve Fronapfel  
Alpha-Nu  
Edgar Vøress  
Alpha-Pi  
Lowell B. Fenner  
Alpha-Phi  
Mike Bushaw  
Beta-Gamma  
Ed R. McClane  
Beta-Iota  
Aaron Vaughn  
Holck  
Beta-Nu  
Phillip Gillespie  
Beta-Xi  
Phillip Leyendecker  
Beta-Omicron  
J. Dan Lilley  
Beta-Pi  
Ted Armstrong, Jr.  
Beta-Sigma  
James C. Economy  
Beta-Tau  
Vince Galbiati

Beta-Upsilon  
Robert Gimmi  
Beta-Phi  
Michael A.  
Condello  
Beta-Chi  
Kenneth J. Kaupas  
Beta-Psi  
Gerhart H. Kellner  
Beta-Omega  
Christian B.  
Dwyer  
Gamma-Alpha  
George Hakim  
Gamma-Gamma  
Mark Schleer  
Gamma-Delta  
Thomas Mullen  
Gamma-Epsilon  
Jim Crace  
Gamma-Eta  
Christopher R.  
Brown  
Gamma-Iota  
James F. Buss  
Gamma-Kappa  
Moe Mitzman  
Gamma-Nu  
Dennis Mark Van  
Doros  
Gamma-Xi  
Mark Houchins

Gamma-Pi  
Robert Wilson  
Gamma-Rho  
Bryan Walling  
Gamma-Sigma  
Thomas Merriman  
Gamma-Tau  
Al Newton  
Gamma-Upsilon  
Larry Payne  
Gamma-Omega  
Greg Remus  
Delta-Alpha  
Gerald McFadden  
Delta-Epsilon  
Robert Kahrman,  
Dean  
Delta-Zeta  
Thomas Schmaltz  
Delta-Iota  
Ed Deneen  
Delta-Lambda  
Bryan Kilian  
Delta-Mu  
Bob Matthey, Jr.  
Delta-Rho  
John P. Frazier  
Delta-Tau  
Thomas Skrzypiec  
Delta-Phi  
David Gallager

Delta-Psi  
William Hopper  
Delta-Omega  
Paul Swofford  
Epsilon-Alpha  
Alan Jennings  
Epsilon-Beta  
Mark Metcalf  
Epsilon-Gamma  
John Michelich  
Epsilon-Epsilon  
Dan Archer  
Epsilon-Zeta  
Lyndell Cummins,  
GFC  
Epsilon-Eta  
Mark S. Richmond  
Epsilon-Kappa  
Robert Gross  
Epsilon-Lambda  
Ron Wolfe  
Epsilon-Mu  
Jack North  
Epsilon-Nu  
John J. Merino,  
Jr., GTC  
Epsilon-Xi  
Richard Jacques  
Epsilon-Omicron  
Timothy J. Neville  
Epsilon-Pi  
Art Thatcher

Epsilon-Rho  
Ralph O'Bryant  
Epsilon-Sigma  
Joe Conway  
Epsilon-Tau  
Patrick R. Taylor  
Epsilon-Psi  
John H. Williams,  
Jr.  
Epsilon-Omega  
Laurence D. Rust  
Zeta-Alpha  
Guy Huttlin  
Zeta-Beta  
Dale Trillow  
Zeta-Delta  
T. J. Singer  
Rio Grande  
Kenneth C. Harr  
Bakersfield  
Mario Aguila  
North Carolina  
Wesleyan  
Truett Tanner  
SE Oklahoma  
State  
Bobby R. Story  
Plattsburgh  
Frank P. Huchro,  
Jr.

(Continued from page 15)

burgh (Paul Shatz, president; Mike Derwin, internal vice president; Paul Longe, external vice president; Nick Padovano, treasurer; Scott Currier, secretary; Russell Monaco, historian; Andy Hain, public relations; Joe Barton, Dave Bell, Tom Favreau, Evan Kalin, Bill Mattor, Jim Miller, Jeff Stern and Marc Wagner) we welcome the Alpha pledge class. The colony looks forward to its chartering by the end of the year.

This semester the colony had a total of three rushes resulting in the largest and best pledge class of all fraternities on campus. Some fund-raisers this semester: "tuck in service," car wash, and blasts on Thursday nights at Woodstocks.

In the interfraternity organization, Sigma Pi contributed in a six-mile crop walk, and a fast day where students give up their meals as a donation to raise money.

The Fraternity is also offering a scholarship for a graduating high school student en-

tering college.

In April the colony had its first banquet. It was a great success.

#### UNDERGRADUATES:

Russell Monaco, vice president of the Student Association; Marc Wagner, graduated.

Scott Currier and Andy Hain are leaving Sigma Pi Colony at Plattsburgh to finish up their education at another institution. The colony wishes them well.

#### ALUMNI:

Richard Foote '83, has the honor of being the colony's first alum.

### UNIVERSITY OF WESTERN ONTARIO CANADA

London, Ontario-Greetings from London, Ontario Canada. The UWO Colony was visited by the famous Mark Bailey and George

Sansoucy duo on April 4. Along with these Sigma Pi's were representatives from the University of Windsor and the University of Detroit, who assisted in colonization that evening. UWO colonized with 24 men. Two men pledged a week later.

Social events have included "movie night," which was attended by three sororities. There was also a get-together with Kappa Alpha Theta. Social, service, and housing committees have been established with participation from all members. The search for a suitable house for the colony continues with enthusiasm.

The other fraternities at Western have welcomed Sigma Pi fully. They know Sigma Pi is going to make its mark!

#### UNDERGRADUATES:

Craig Campbell, graphic co-editor of the Western "Gazette;" Dave Spence, IFC sports commissioner.



# Adytum on High

## Arkansas (Alpha-Sigma)

Johnson, Joe Paul, deceased 1-6-83.

## Arkansas State University (Alpha-Pi)

Robbins, John, deceased 3-84.

Shaw, Joe B., deceased 1-14-84.

## Auburn University (Alpha-Delta)

Buntin, James Russell, deceased 7-20-83.

## Beloit College (Alpha-Theta)

Cornue, Stanley H. deceased 1-2-82.

Elderridge, Row W., deceased 8-5-82.

Krupka, David, deceased 5-17-83.

## California, Berkeley, University of (Iota)

Mallory, George D., deceased 7-30-83.

Hursh, Roy H., deceased unkn.

## California, Los Angeles, University of (Upsilon)

Blakemore, Carroll E., deceased 4-81.

Peers, William, deceased unkn.

Sanders, Joseph M., deceased 9-5-83.

Sheppard, George R., deceased 10-23-82.

Westcott, Ralph M., deceased 7-18-83.

## Eastern Illinois University (Beta-Gamma)

Jesse, Matthew Gene, deceased unkn.

## East Stroudsburg State University (Beta-Psi)

Bush, Claude A., deceased unkn.

Redduzzi, Anthony, deceased unkn.

## Embry-Riddle Aeronautical University (Epsilon-Phi)

Jones, Adam, deceased unkn.

## Findlay College (Gamma-Omicron)

Kiess, Thomas Melvin, deceased 12-14-83.

## Franklin & Marshall College (Nu)

Hanlon, John J. Jr., deceased 10-6-83.

Rupp, Robert, deceased 5-14-82.

## Illinois, University of (Phi)

McMillen, James W., deceased 1-27-84.

Mullen, Vern E., deceased 9-14-80.

Rennoe, Edgar J., deceased unkn.

Willmers, Harry D., deceased unkn.

## Indiana University (Beta)

Braxton, David Alan, deceased 2-84.

Dolaway, Earl L., deceased 11-5-83.

Isenogle, Robert Keith, deceased 10-27-83.

Wiles, Orin W., deceased 4-84.

## Iowa, University of (Xi)

Becker, Lester, deceased 6-16-83.

Buerkens, Clarence, deceased 1-24-84.

Chapman, Deo F., deceased 4-11-83.

Gerke, David A., deceased 10-22-83.

Ladoux, Burness A., deceased 7-27-84.

Pinkerton, Volney A., deceased 6-25-84.

Plane, Ralph S., deceased unkn.

Rumble, Douglas Jr., deceased unkn.

## Kenyon College (Lambda)

Miller, George M., deceased 10-4-83.

## Louisiana Tech University (Delta-Lambda)

Gilbert, Billy H., deceased unkn.

## Mississippi State University (Alpha-Lambda)

Lowe, W. Malcolm, deceased 6-6-84.

McDaniel, George O. Jr., deceased unkn.

## Missouri, Rolla, University of (Alpha-Iota)

Nicholson, Harvey L., deceased 7-6-84.

## New Jersey Institute of Technology (Alpha-Mu)

Van Fleet, Frank, deceased 3-83.

## New Mexico State University (BETA-XI)

Morris, Melvin L., deceased unkn.

## North Carolina State University (RHO)

Maddison, Robert J., deceased unkn.

Rudd, Aaron L., deceased unkn.

## Ohio State University (Gamma)

Brown, Robert R., deceased 4-23-83.

Carroll, Walter, deceased 12-9-83.

Dodd, Charles, deceased 3-22-84.

Ferguson, Edward, deceased 4-2-83.

Haines, Howard, deceased unkn.

## Ohio University (Epsilon)

Rosser, Edward Barry, deceased 1-22-83.

## Oregon State University (OMEGA)

Beer, Frank Frederick, deceased unkn.

Doane, John J., deceased 11-18-77.

Haneline, Herbert, deceased 10-83.

Little, T. Gordon, deceased unkn.

Nievwoer, Harry W., deceased unkn.

Whitely, Richard Lawton, deceased 11-12-83.

## Pennsylvania State University (Theta)

Coldren, I. Burdette, deceased 10-9-83.

Green, Theodore, deceased 9-25-83.

Stoddard, George, deceased 12-28-81.

## Pennsylvania, University of (Delta)

Goe, Robert S., deceased 4-30-84.

Neeld, William Albert, deceased 12-20-83.

## Pittsburgh (Chi)

Hoffman, Homer P., deceased 6-10-84.

Mitchell, John A., deceased 7-28-84.

Keller, Elliott, deceased 7-30-83.

## Purdue University (Eta)

Moellering, Edwin F., deceased unkn.

Nessler, Frederick Walter, deceased 11-28-83.

Smith, Evertt Miles, deceased 8-23-83.

Weber, William R., deceased 4-17-83.

## Rochester Institute of Technology (Beta-Phi)

Anania, Gary S., deceased 4-83.

## San Diego State University (Alpha-Omega)

Nakese, Roy Saburo, deceased 2-26-

83.

## Southern Illinois University, Carbondale (Beta-Nu)

Pettus, Hugh L., deceased fall-82.

## Temple University (Kappa)

Bullock, Donald H., deceased 3-84.

Duddy, James T., deceased unkn.

Holden, Roy D., deceased unkn.

Martin, John E. Jr., deceased unkn.

Merkle, Hugo V., deceased unkn.

Yarnell, Phillip, deceased unkn.

## Tulane University (Omicron)

Anders, Harry N., deceased unkn.

## Utah (Pi)

Anderson, Boyd C., deceased 8-16-81.

Lynch, Allen T., deceased 6-25-83.

Slater, J. Robert, deceased unkn.

## Utah State University (Alpha-Psi)

Starr, George H., deceased unkn.

## William & Mary, College of (Alpha-Eta)

Jones, Charles C., deceased unkn.

## Wisconsin, Madison, University of (Tau)

Kieweg, Howard Hoffman, deceased 1-84.

Wake, Van B., deceased 4-84.



William R. Peers

Retired Lt. Gen. William R. Peers (Upsilon, '37), World War II hero and later head of the My Lai massacre inquiry, died April 6, 1984. He was 69.

A veteran of three wars, he was chosen by President Richard Nixon in 1969 to conduct an inquiry into the death of between 175 and 400 South Vietnamese villagers slaughtered by American soldiers. The probe resulted in charges against 14 officers, including two generals.

Brother Peers, a Sigma Pi Fraternity Founder's Award recipient, is best remembered for his courage in reminding Americans of American ideals that seem to be going astray. This was exemplified by his My Lai inquiry, which hastened the U.S. withdrawal from Vietnam.

## Sigma Pi Fraternity



Brothers doing business at Convocation business session.



Convocation Coordinator Mark Briscoe

(Continued from page 5)

**Cletus Broecker** Eta, Purdue University, Ind.

**Jay Dan Lilly**, Beta-Omicron, University of California, Long Beach

### CONVOCATION AWARDS

Congratulations to the following chapters and individual brothers for winning Sigma Pi Fraternity's most sought after awards and honors at Convocation '84.

#### Chapter Awards

**Grand Sage's Award:**

Alpha-Delta, Auburn University, Ala.

**Grand Council Award:**

Alpha-Delta, Auburn University, Ala.

Epsilon-Zeta, Western Illinois University

Epsilon-Chi, University of San Diego, Calif.

**Triad Award:**

Alpha-Delta, Auburn University, Ala.

Epsilon-Zeta, Western Illinois University

Epsilon-Chi, University of San Diego, Calif.

Beta-Gamma, Eastern Illinois University

Epsilon-Epsilon, Emporia State University, Kan.

Delta-Alpha, Central Michigan University

Epsilon-Beta, University of Kentucky

Epsilon-Nu, California State—Fullerton

Alpha-Iota, University of Missouri—Rolla

Epsilon-Rho, Drury College, Mo.

**Most Improved Chapter Award:**

Gamma-Delta, Slippery Rock University, Pa.

**Most Improved Chapter Award**

**Runner-Up:**

Epsilon-Eta, Illinois State University

**Membership Recruitment Award:**

1982-83

Beta-Omicron, California State—Long Beach

1983-84

Beta-Gamma, Eastern Illinois University

**Membership Recruitment Increase Award:**

1982-83

Alpha-Chi, University of Maryland

1983-84

Gamma-Gamma, Central Missouri State University

Iverson-Lemmond Expansion Award:

Epsilon-Omega, Potsdam State College, Pa.

**Efficiency Award:**

1982-83

Alpha-Nu, Wake Forest University,

N.C.  
Epsilon-Zeta, Western Illinois University

1983-84

Beta-Gamma, Eastern Illinois University

Gamma-Alpha, University of Detroit, Mich.

Gamma-Delta, Slippery Rock University, Pa.

Epsilon-Zeta, Western Illinois University

**Community Service Award:**

Epsilon-Rho, Drury College, Mo.

Alpha-Iota, University of Missouri—Rolla

**Multiple Sclerosis Awards:**

**Top Money Maker**

Zeta-Delta, University of Colorado

**Best Public Relations**

Beta-Phi, Rochester Institute of Technology, N.Y.

**EMERALD Award of Merit:**

1982-83

Theta, Pennsylvania State University

1983-84

Alpha-Iota, University of Missouri—Rolla

**Louis Foley Chapter Newsletter Award:**

1982-83

Alpha-Delta, Auburn University, Ala.

1983-84

## Conquering New Frontiers



The 1982-84 Grand Council with Canadian Colony President Dave Spence. Left to right: GFC Lyndell R. Cummings, GTC John J. Merino Jr., GS Gary B. Tash, Dave Spence, GSC Eli R. Sidwell Jr., GH Dennis V. Day and GF.C Gregory J. Evans.

Omega, Oregon State University  
Louis Foley Chapter Newsletter  
Award Runner-Up:

1982-83

Delta-Alfa, Central Michigan University

1983-84

Beta-Gamma, Eastern Illinois University

Convocation Attendance Award:

Epsilon-Nu, California State—Fullerton

Convocation Most Miles Award:

Epsilon-Nu, California State—Fullerton

Convocation Logo Award:

Beta-Mu, University of Mississippi

### Individual Awards

Founders' Award:

Edgar Estes Folk, Alpha-Nu (Wake Forest) (awarded posthumously)

Brother Folk was a very dedicated journalism professor and Sigma Pi member. Some of his students at Wake Forest University included Harold Hayes, former editor of *Esquire* magazine; Al Hunt, Washington correspondent for the *Wall Street Journal* and the late Simmons Fentress of the Washington bureau of *Time* magazine.

Brother Folk served as faculty advisor to two Sigma Pi chapters, Alpha-Epsilon (Mercer University,

Ga.) and Alpha-Nu (Wake Forest University, N.C.). Folk led both groups to chartering.

Dr. Folk's son, Edgar Estes III, "pledged" Sigma Pi with the deposit of his initiation fee on the day of his birth. Dr. Folk's two grandsons are also Sigma Pi's. Currently, his second grandson, Tom Estes, holds the office of first counselor of Alpha-Nu Chapter. Brother Folk departed to the Adytum on High January 1, 1982.

Edward Rogers, Alpha-Mu (N.J. Inst. of Tech.)

Brother Rogers is the president of Dow Chemical, Japan, Ltd. Rogers is also president of the corporation's pharmaceutical venture, Dow LePetit, Ltd.

Rogers is involved with the general management of Dow's diversified activities in Japan. Some of his duties include broadening Dow's base in Japan for future growth.

Brother Roger's incredible career advancement with Dow Chemical Company has been attributed to his ability to combine his engineering knowledge with management skills.

Basil J. Boritzki, Alpha-Rho (SW Missouri State)

Brother Boritzki is a charter member and founder of the Alpha-



Sigma Pi Fraternity's first INTERNATIONAL Sweetheart Sandy Fiorenza (Cal State Long Beach).

Rho Chapter of Sigma Pi Fraternity. He has also served the international Fraternity as grand first counselor and chairman of the board of The Sigma Pi Foundation. Brother Boritzki was recently honored as SMU's outstanding alumnus of the year. Boritzki is a dedicated supporter of Sigma Pi in many areas, most notably in the Shadowwood Campaign to restore the Fraternity's headquarters. Brother Boritzki is the vice president of United Telephone System, the third largest such system in the nation.

Andrew D. Shaw, Upsilon (U.C.L.A.)

Brother Shaw is the founder and retired president of the Andrew D. Shaw Company, an automotive replacement parts company that services Southern California, Arizona, Southern Nevada and Hawaii.

Brother Shaw began the business in 1927 with a handful of automotive parts lines. Today his company has grown to be one of the largest and most respected firms of its kind in the country.

Shaw is also credited with helping build four other large automotive parts manufacturers: Hasints Manufacturing Company, Kennedy Tool Kits, Pioneer Motor Bearing

Company and National Motor Bearing Company.

Brother Shaw is an avid golfer and equestrian. He is a former president of Las Rancheros Vistadores, a group of 700 equestrians that conduct an annual ride in Santa Ynez Valley, California. Brother Shaw's motto is: "Success comes through service."

**Herbert E. Longenecker**, Theta (Penn State)

Brother Longenecker is the president emeritus of Tulane University

in New Orleans, Louisiana. He has had an outstanding career as a scientist, an academic leader and a consultant to government, private industry and foundations.

Dr. Longenecker has been designated a distinguished alumnus by his alma mater and is the recipient of honorary degrees from six other universities.

**Curtis G. Shake Award**  
(Outstanding Area Director):

**Mark Bailey**, Delta-Alpha, Central Michigan University

**Lyle H. Smith Award**  
(Outstanding Chapter Director):  
**George Hakim**, Gamma-Alpha, University of Detroit, Mich.  
**Michael P. Carey Award**  
(Outstanding Undergraduate):  
**Joe Durnford**, Zeta-Delta, University of Colorado  
**Harold Jacobsen Award**  
(Outstanding Undergraduate):  
**David Shaffer**, Alpha-Delta, Auburn University, Ala.

## Etc...

---

## BRL: A SAFE INVESTMENT WITH A GOOD DIVIDEND

**H**ave you ever invested in a young man's college education? It is an investment in which you can take pride. Here is your opportunity.

The BRL fund is dedicated to providing financial assistance and encouragement to young men who desire an education but are without sufficient funds.

The BRL is a tax-exempt organization operated by a volunteer board who are members of the Fraternity. The young men who will be future leaders are on the campuses of our colleges right now; some of them need our assistance and support.

An investment in a young man's college education will help to prepare him better, both for good citizenship and for tomorrow's responsibilities.

The inclusion of the following clause in your will (or your designation of the BRL Fund in your life insurance policy as a beneficiary) will ensure that you will be a part of some young man's future: "I give, devise, and bequeath to the BRL Fund the sum of XXX dollars." (or otherwise describe the gift if it consists of real estate, securities, or personal property).

### DO IT TODAY

For additional information regarding the BRL Fund, write the

Byron R. Lewis Educational Fund, Sigma Pi Fraternity, Box 1897, Vincennes, Ind. 47591.

Recent BRL Educational Fund contributors include **Paul W. Murdock** (Phi, '15), **Victor R. B. Oelschlager** (Alpha-Theta '31), **Gertrude Rennor** in memory of husband **Edgar J. Rennor** (Phi, '18) and **Gary Williams** (Gamma-Nu, '66).

### BRL SCHOLARSHIP RECIPIENTS

Congratulations to Sigma Pi Fraternity's most recent BRL Scholarship recipients:

### 1984 BRL SCHOLARSHIP WINNERS

**Becher W. Hungerford Award**  
**Ralph D. Clemmer**  
Omega, Oregon State University

**William J. Cutbirth Award**  
**Scott E. Holeman**  
Epsilon-Epsilon, Emporia State University, Kan.

**Falkenau Award**  
**John S. Cain**  
Epsilon-Beta, University of Kentucky

**Frank E. Gray Scholarship**  
**John J. Pittman**  
Alpha-Gamma, University of Washington

**Harold Jacobsen Award**  
**Michael S. Becker**  
Beta, Indiana University

### 1983 BRL SCHOLARSHIP WINNERS

**Becher W. Hungerford Award**  
**Brad Ziegler**  
Epsilon-Rho, Drury College, Mo.

**William J. Cutbirth Award**  
**Thomas Simonson**  
Beta-Theta, Drexel University, Pa.

**Falkenau Award**  
**Jackie Barger**  
Epsilon-Rho, Drury College, Mo.

**Frank E. Gray Scholarship**  
**Patrick Murray**  
Michigan State Colony, Michigan State University

**Harold Jacobsen Award**  
**Bradly Blietz**  
Epsilon-Nu, California State University, Fullerton

---

## NEW CONSULTANT

**J**ON DODD of Alpha-Upsilon Chapter (University of Rhode Island) is the newest addition to Sigma Pi Fraternity's consulting staff. Brother Dodd will be visiting our chapters on the East Coast. Welcome aboard Jon!

---

# Sigma Pi Wish List

## A #103—Game Jersey

Russell Athletic Shirt  
100% Cotton  
Sizes: S, M, L, XL.  
Colors: White, Navy, Purple, Light Blue, Gold.  
Lettering and cuffs any color desired.  
\$16.00

## B #875—Hooded Sweatshirt

Russell Athletic Shirt  
50% Cotton—50% Polyester  
Sizes: S, M, L, XL.  
Colors: White, Navy, Scarlet, Gold.  
Lettering any color.  
\$19.95

## C Sigma Pi Huggy

Yellow Foam with Purple Crest and Lettering  
\$2.00

## D Sigma Pi Tumbler

Gold Plastic 17 oz. Tumbler with Purple Crest and Lettering.  
25' each or \$24.00 per 100

## E I Love Sigma Pi Button

50' each

## F Key Chain

Not Available

## G Tankard Mug

Wood-look mug with Crest and Rope Handle.  
\$7.00

## H Sigma Pi 12-pk. Cooler

Cloth Cooler, Plastic Lined, Zip Close, Shoulder Strap  
\$6.00

## I #227—Cross Creek Sport Shirt

La Coste Knit 100% Cotton  
Longer back tail Embroidered Crest  
Sizes: S, M, L, XL.  
Colors: Navy, White, Light Blue, Red  
\$26.00

## J Logo Sport Shirt (not pictured)

La Coste Knit 50% Polyester-50% Cotton  
Embroidered Crest  
Sizes: S, M, L, XL.  
Colors: White, Navy, Light blue, Gold, Red  
\$18.50

## K Varsity Jacket

Nylon with Flannel Lining  
Two Slash Pockets  
Embroidered Crest  
Sizes: S, M, L, XL.  
Colors: Navy, Black, Maroon  
\$35.95

## L Snap Front Jacket

Nylon, Flannel Lining, Elastic incuffs  
Draw Strings at waist.  
Sizes: S, M, L, XL.  
Color: Navy  
\$21.00

## M Sigma Pi Baseball Cap

White Purple Script Writing  
\$5.00

## N Baseball Jersey

White Body, Colored Sleeves  
50% Cotton—50% Polyester  
2-button Neckline  
Sizes: S, M, L, XL.  
Colors: White/Navy, White/Scarlet, White/Kelly  
\$12.50

## O Baseball Jersey

White Body, Colored Sleeves  
50% Cotton—50% Polyester  
Pullover Neckline  
Sizes: S, M, L, XL.  
Colors: White/Navy, White, Scarlet, White/Kelly  
\$12.50

## P Sigma Pi Neck-Tie

Navy Blue with Crest Design  
\$12.00

## Q Sigma Pi Tube Socks

White Calf Length  
Purple Stripes and Greek Letters  
\$2.75

## R #8—Sigma Pi Greek Letter Lapel Pin

\$4.50

## R #9—Sigma Pi Coat-of-Arms Lapel Pin

\$4.50

## R #12—Sigma Pi Badge

Balclad with simulated Emerald.  
\$15.00



I #227



K

L



M

N

O

Q

R #8

R #9

R #12

# SIGMA PI WISH LIST

Order NOW  
 \* Allow two weeks for delivery

QUANTITY	CATALOG # AND DESCRIPTION	SIZE	COLOR	TOTAL

TOTAL AMOUNT  
ENCLOSED

Payment must accompany order. Include TOTAL AMOUNT and \$1.00 per item for shipping. Fill in ENCLOSED address form. Do not list P.O. Box as address. All prices subject to change. Send order blank and payment (made payable to Sigma Pi Fraternity) to:

**SIGMA PI FRATERNITY**  
**P.O. Box 1897**  
**Vincennes, Indiana 47591**

Name \_\_\_\_\_ Chapter \_\_\_\_\_  
 Street \_\_\_\_\_  
 City \_\_\_\_\_ State \_\_\_\_\_ Zip \_\_\_\_\_

**To parents:** Your son's Sigma Pi magazine is sent to his home address while he's in college and we hope you enjoy reading it. If he is no longer in college and not living at home, please forward his permanent address to: Sigma Pi Fraternity, P.O. Box 1897, Vincennes, Indiana 47591.

**Brothers:** If you know someone who isn't getting his **Emerald**, please have him forward his address to the Executive Office immediately.  
**In the process of moving:** Forward the Executive Office your new address so we can have accurate mailing addresses to mail **The Emerald**.

THE  
 EMERALD  
 OF SIGMA PI FRATERNITY

ADDRESS CORRECTION REQUESTED



Non-Profit Organization  
**U.S. POSTAGE  
 PAID**  
 Permit No. 54  
 Athens, Ohio

**SIGMA PI FRATERNITY**  
**Old Wheatland Rd., P.O. Box 1897**  
**Vincennes, Indiana 47591**