

District of Columbia Areas of Potential Flooding

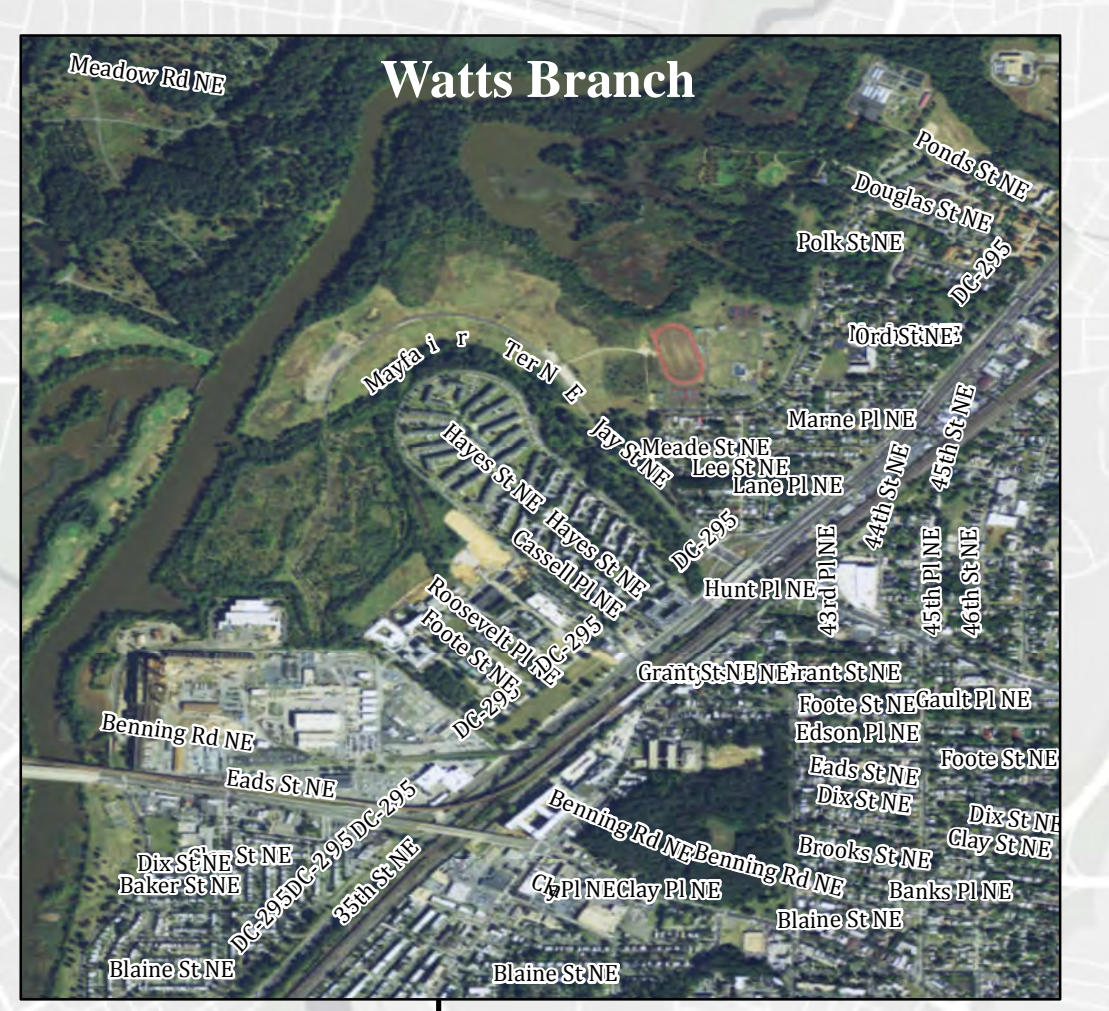
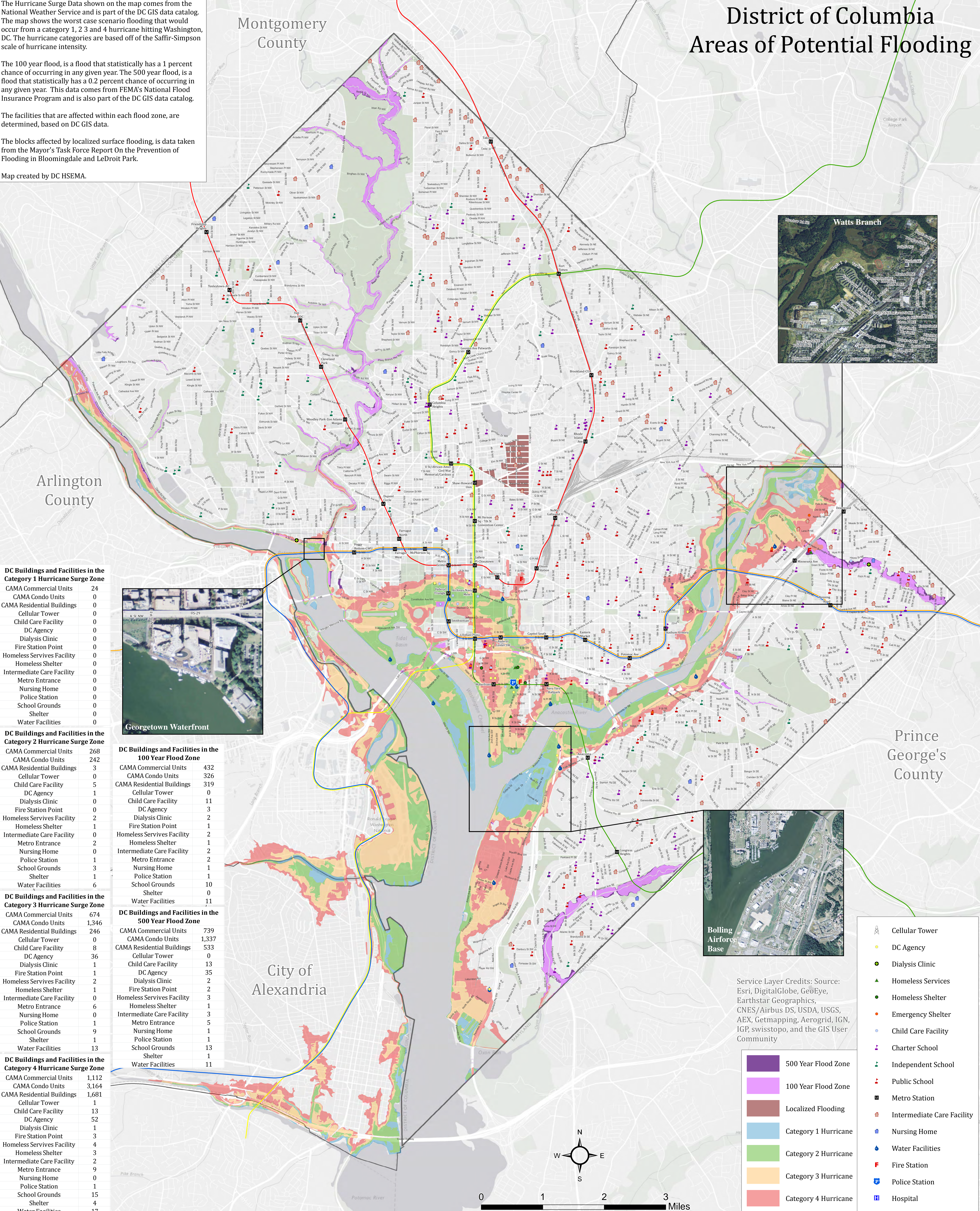
The Hurricane Surge Data shown on the map comes from the National Weather Service and is part of the DC GIS data catalog. The map shows the worst case scenario flooding that would occur from a category 1, 2, 3 and 4 hurricane hitting Washington, DC. The hurricane categories are based off of the Saffir-Simpson scale of hurricane intensity.

The 100 year flood, is a flood that statistically has a 1 percent chance of occurring in any given year. The 500 year flood, is a flood that statistically has a 0.2 percent chance of occurring in any given year. This data comes from FEMA's National Flood Insurance Program and is also part of the DC GIS data catalog.

The facilities that are affected within each flood zone, are determined, based on DC GIS data.

The blocks affected by localized surface flooding, is data taken from the Mayor's Task Force Report On the Prevention of Flooding in Bloomingdale and LeDroit Park.

Map created by DC HSEMA.



DC Buildings and Facilities in the Category 1 Hurricane Surge Zone

CAMA Commercial Units	24
CAMA Condo Units	0
CAMA Residential Buildings	0
Cellular Tower	0
Child Care Facility	0
DC Agency	0
Dialysis Clinic	0
Fire Station Point	0
Homeless Services Facility	0
Homeless Shelter	0
Intermediate Care Facility	0
Metro Entrance	0
Nursing Home	0
Police Station	0
School Grounds	0
Shelter	0
Water Facilities	0

DC Buildings and Facilities in the Category 2 Hurricane Surge Zone

CAMA Commercial Units	268
CAMA Condo Units	242
CAMA Residential Buildings	3
Cellular Tower	0
Child Care Facility	5
DC Agency	1
Dialysis Clinic	0
Fire Station Point	0
Homeless Services Facility	2
Homeless Shelter	1
Intermediate Care Facility	0
Metro Entrance	2
Nursing Home	0
Police Station	1
School Grounds	3
Shelter	1
Water Facilities	6

DC Buildings and Facilities in the Category 3 Hurricane Surge Zone

CAMA Commercial Units	674
CAMA Condo Units	1,346
CAMA Residential Buildings	246
Cellular Tower	0
Child Care Facility	8
DC Agency	36
Dialysis Clinic	1
Fire Station Point	1
Homeless Services Facility	2
Homeless Shelter	1
Intermediate Care Facility	0
Metro Entrance	6
Nursing Home	0
Police Station	1
School Grounds	9
Shelter	1
Water Facilities	13

DC Buildings and Facilities in the Category 4 Hurricane Surge Zone

CAMA Commercial Units	1,112
CAMA Condo Units	3,164
CAMA Residential Buildings	1,681
Cellular Tower	1
Child Care Facility	13
DC Agency	52
Dialysis Clinic	1
Fire Station Point	3
Homeless Services Facility	4
Homeless Shelter	3
Intermediate Care Facility	2
Metro Entrance	9
Nursing Home	0
Police Station	1
School Grounds	15
Shelter	4
Water Facilities	17

DC Buildings and Facilities in the 100 Year Flood Zone

CAMA Commercial Units	432
CAMA Condo Units	326
CAMA Residential Buildings	319
Cellular Tower	0
Child Care Facility	11
DC Agency	3
Dialysis Clinic	2
Fire Station Point	1
Homeless Services Facility	2
Homeless Shelter	1
Intermediate Care Facility	2
Metro Entrance	2
Nursing Home	1
Police Station	1
School Grounds	10
Shelter	0
Water Facilities	11

DC Buildings and Facilities in the 500 Year Flood Zone

CAMA Commercial Units	739
CAMA Condo Units	1,337
CAMA Residential Buildings	533
Cellular Tower	0
Child Care Facility	13
DC Agency	35
Dialysis Clinic	2
Fire Station Point	2
Homeless Services Facility	3
Homeless Shelter	1
Intermediate Care Facility	3
Metro Entrance	5
Nursing Home	1
Police Station	1
School Grounds	13
Shelter	1
Water Facilities	11

Service Layer Credits: Source: Esri, DigitalGlobe, GeoEye, Earthstar Geographics, CNES/Airbus DS, USDA, USGS, AEX, Getmapping, Aerogrid, IGN, IGP, swisstopo, and the GIS User Community

- 500 Year Flood Zone
- 100 Year Flood Zone
- Localized Flooding
- Category 1 Hurricane
- Category 2 Hurricane
- Category 3 Hurricane
- Category 4 Hurricane

- Cellular Tower
- DC Agency
- Dialysis Clinic
- Homeless Services
- Homeless Shelter
- Emergency Shelter
- Child Care Facility
- Charter School
- Independent School
- Public School
- Metro Station
- Intermediate Care Facility
- Nursing Home
- Water Facilities
- Fire Station
- Police Station
- Hospital