

TOP SECRET



IMAGERY  
ANALYSIS  
DIVISION

PIR

PHOTOGRAPHIC INTELLIGENCE REPORT



CHINESE POWER PLANTS

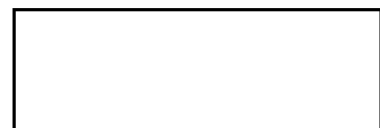
HUPEH PROVINCE



25X1

25X1

Declass Review by NIMA / DOD



DATE JULY 1966

COPY

PAGES 19

GROUP 1  
Excluded from automatic  
downgrading and declassification

TOP SECRET

Approved For Release 2003/06/20 : CIA-RDP78T05161A001100010057-5  
25X1

Approved For Release 2003/06/20 : CIA-RDP78T05161A001100010057-5

Approved For Release 2003/06/20 : CIA-RDP78T05161A001100010057-5

TOP SECRET

25X1

CIA IMAGERY ANALYSIS DIVISION

25X1

25X1

## CHINESE POWER PLANTS

### HUPEH PROVINCE

- (A) Han-kou Thermal Power Plant
- (B) Huang-shih Thermal Power Plant (Tayeh)
- (C) Kuang-hua Hydro Power Plant (Tan-chiang-kou)
- (D) Pa-lien Hydro Power Plant
- (E) Wu-han Heat and Thermal Power Plant (Ching-shan)
- (F) Wu-han Thermal Power Plant No. 3

### REQUIREMENT

C-RR5-83,218

### CIA/IAD PROJECT

30647-6

Approved For Release 2003/06/20 : CIA-RDP78T05161A001100010057-5

TOP SECRET

25X1



25X1

Approved For Release 2003/08/20 : CIA-RDP78T05161A001100010057-5

[Redacted Box]

FIGURE 1

SHANSI

SHENSI

HONAN

HUPEH

HUNAN

KIANGSI

KWANGSI CHUAN

Approved For Release 2003/08/20 : CIA-RDP78T05161A001100010057-5

[Redacted Box]

[Redacted Box]

Approved For Release 2003/06/20 : CIA-RDP78T05161A001100010057-5

A

Approved For Release 2003/06/20 : CIA-RDP78T05161A001100010057-5

[Redacted]

**TOP SECRET**

[Redacted]

Approved For Release 2003/06/20 : CIA-RDP78T05161A001100010057-5

25X1

CIA IMAGERY ANALYSIS DIVISION

[Redacted]

25X1

HAN-KOU THERMAL POWER PLANT

[Redacted]

25X1

25X1

NPIC NUMBER - 38-I-1

Han-kou Thermal Power Plant is located on the Han Chiang (River) southeast of Han kou Airfield at 30 34 OON - 114 16 OOE. The plant is coal-operated and includes a control house, substation with probably one transformer, and numerous support/storage buildings.

The powerhouse is of an old design and is equipped with two large free-standing masonry stacks and a single roof stack. Because of the odd heterogeneous construction of the powerhouse and the absence of visible generator cable leads, no assessment could be made concerning the number of boiler and generator units.

25X1

No new construction occurred during the period [Redacted]

25X1

[Redacted] Possible light smoke was observed [Redacted] during the above period [Redacted]

25X1

[Redacted]

25X1

25X1

[Redacted]

25X1

**TOP SECRET**

25X1  
25X1  
25X1

Approved For Release 2003/06/20 : CIA-RDP78T05161A001100010057-5

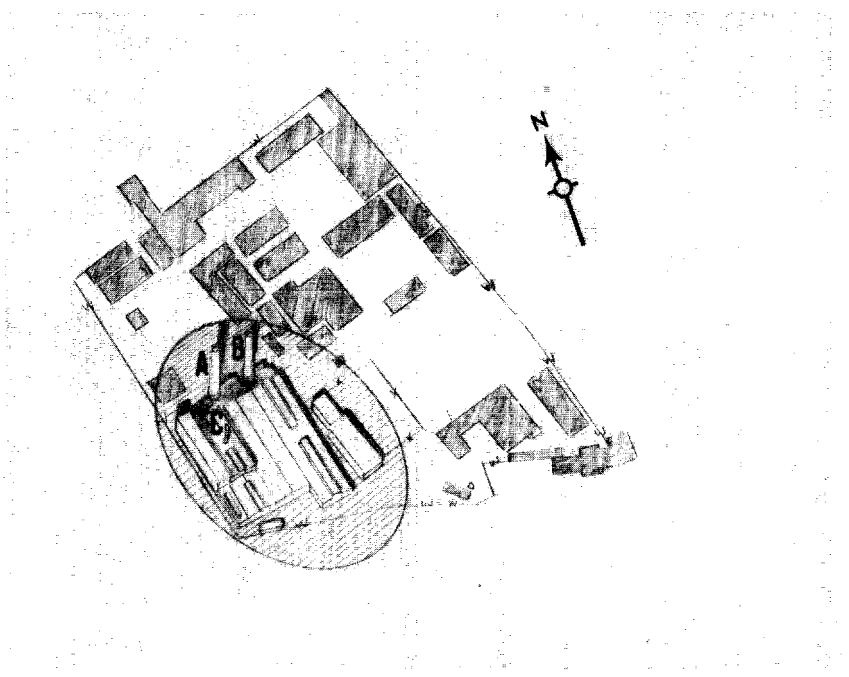
TOP SECRET

FIGURE 2

HAN-KOU THERMAL POWER PLANT



25X1



25X1  
25X1

Approved For Release 2003/06/20 : CIA-RDP78T05161A001100010057-5

TOP SECRET

Approved For Release 2003/06/20 : CIA-RDP78T05161A001100010057-5

**B**

Approved For Release 2003/06/20 : CIA-RDP78T05161A001100010057-5



[Redacted]

**TOP SECRET**

[Redacted]

Approved For Release 2003/06/20 : CIA-RDP78T05161A001100010057-5

25X1

CIA IMAGERY ANALYSIS DIVISION

[Redacted]

25X1

25X1

HUANG-SHIH THERMAL POWER PLANT (TAYEH)

[Redacted]

NPIC NUMBER - 29-B

25X1

Huang-shih Thermal Power Plant is located in the northern sector of Huang-shih on the western bank of the Ch'ang Chiang at coordinates 30 13 40N - 115 04 30E. The facility is rail-served, coal-operated and consists of two separate powerhouses, a substation with two transformers, two or possibly three control houses, and the usual coal processing and handling facilities.

The smaller and apparently older powerhouse is equipped with a single metal stack (B) and is served by a small walled substation. No power cables or other indicators of the number of generator units could be discerned. The larger powerhouse is now apparently one half of its planned size and is equipped with two dust-catcher units and two sets of flues which connect with masonry stack A. Two sets of power cables are visible leading from the generator hall to two transformers, indicating that there are two operable generator units installed.

There has been no change during the specified period [Redacted] [Redacted] with the exception of the addition of a coal unloading/storage building.

25X1

25X1

[Redacted]

25X1

**TOP SECRET**

25X1  
25X1  
25X1

TOP SECRET

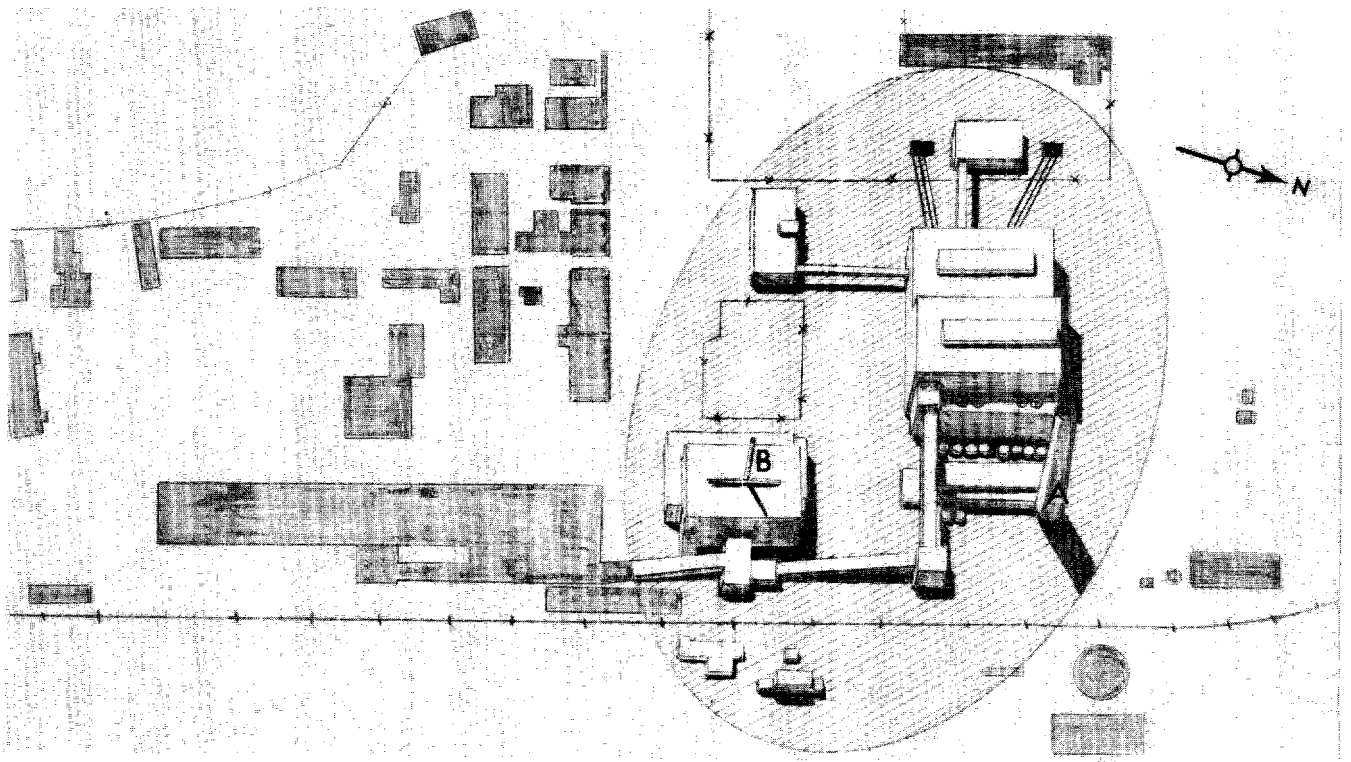
[Redacted]

FIGURE 3

HUANG-SHIH THERMAL POWER PLANT (TAYEH)



25X1



25X1  
25X1

TOP SECRET

Approved For Release 2003/06/20 : CIA-RDP78T05161A001100010057-5

**TOP SECRET**

CIA-RDP78T05161A001100010057-5

25X1

CIA IMAGERY ANALYSIS DIVISION

[Redacted]

25X1

25X1

HUANG-SHIH THERMAL POWER PLANT (TAYEH)

CONSTRUCTION ACTIVITY	LEVEL OF PRODUCTION
Uprights are in place for western section of a coal unloading/storage building which is two-thirds completed.	Very light smoke from stack A. Moderate smoke from stack B.
Coal unloading/storage building is complete.	Light smoke from stack A. Appears to be light smoke from stack B.
None.	Moderate smoke from stack A. Light smoke from stack B.
None.	Moderate smoke from stack A. Light smoke from stack B.
None.	Moderate smoke from stack A. Light smoke from stack B.
None.	Moderate smoke from stack A. Light smoke from stack B.

25X1

[Redacted]

25X1

25X1

Approved For Release 2008/06/20 : CIA-RDP78T05161A001100010057-5

TOP SECRET

CIA-RDP78T05161A001100010057-5

25X1

CIA IMAGERY ANALYSIS DIVISION

[Redacted]

25X1

HUANG-SHIH THERMAL POWER PLANT (TAYEH)

	CONSTRUCTION ACTIVITY	LEVEL OF PRODUCTION
	None.	Moderate smoke from stack A. Probable light smoke from stack B.
	None.	Moderate smoke from stack A. Light smoke from stack B.
	None.	Light smoke from stack A.

25X1

25X1

TOP SECRET

[Redacted]

Approved For Release 2003/06/20 : CIA-RDP78T05161A001100010057-5

c /

Approved For Release 2003/06/20 : CIA-RDP78T05161A001100010057-5

[Redacted]

TOP SECRET

[Redacted]

Approved For Release 2003/06/20 : CIA-RDP78T05161A001100010057-5

25X1

CIA IMAGERY ANALYSIS DIVISION

[Redacted]

25X1

25X1

KUANG-HUA HYDRO POWER PLANT (TAN-CHIANG-KOU)

[Redacted]

NPIC NUMBER - 14-B

25X1

Kuang-hua Hydro Power Plant (Tan-chiang-kou) is of the consolidated, concrete type and is located 13.0 nm northwest of Kuang-hua on the Han Chiang (River) at coordinates 32 33N - 111 29E. The plant was first observed in an intermediate stage of construction [Redacted] and has progressed little since that time. The powerhouse will probably be located along the eastern end of the dam, where sub-structures for six probable water-intake chambers were observed [Redacted] There is no evidence that construction has begun on the foundations for the powerhouse; however, the area is already protected by a cofferdam and such construction could evidently begin at any time. The western end of the dam will probably house the spillway. The sub-structure for this section of the dam was completed [Redacted] but further construction appears to have been deferred pending conclusion of work on the rest of the plant.

25X1

25X1

25X1

No substation or transmission facilities were apparent

[Redacted]

25X1

TOP SECRET

[Redacted]

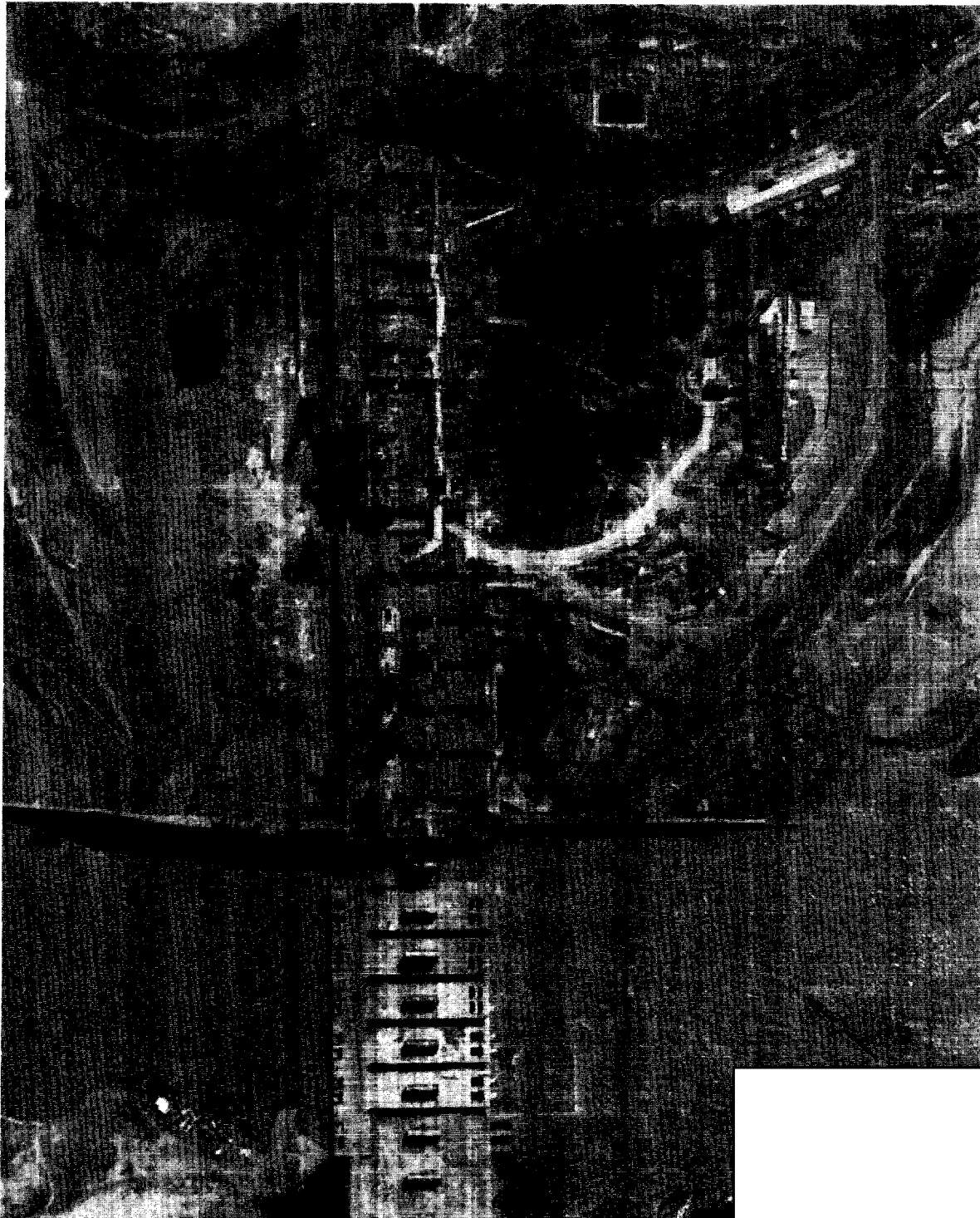
25X1

25X1  
25X1  
25X1

Approved For Release 2003/06/26 : CIA-RDP78T05161A001100010057-5

FIGURE 4

KUANG-HUA HYDRO POWER PLANT (TAN-CHIANG-KOU)



25X1  
25X1  
25X1

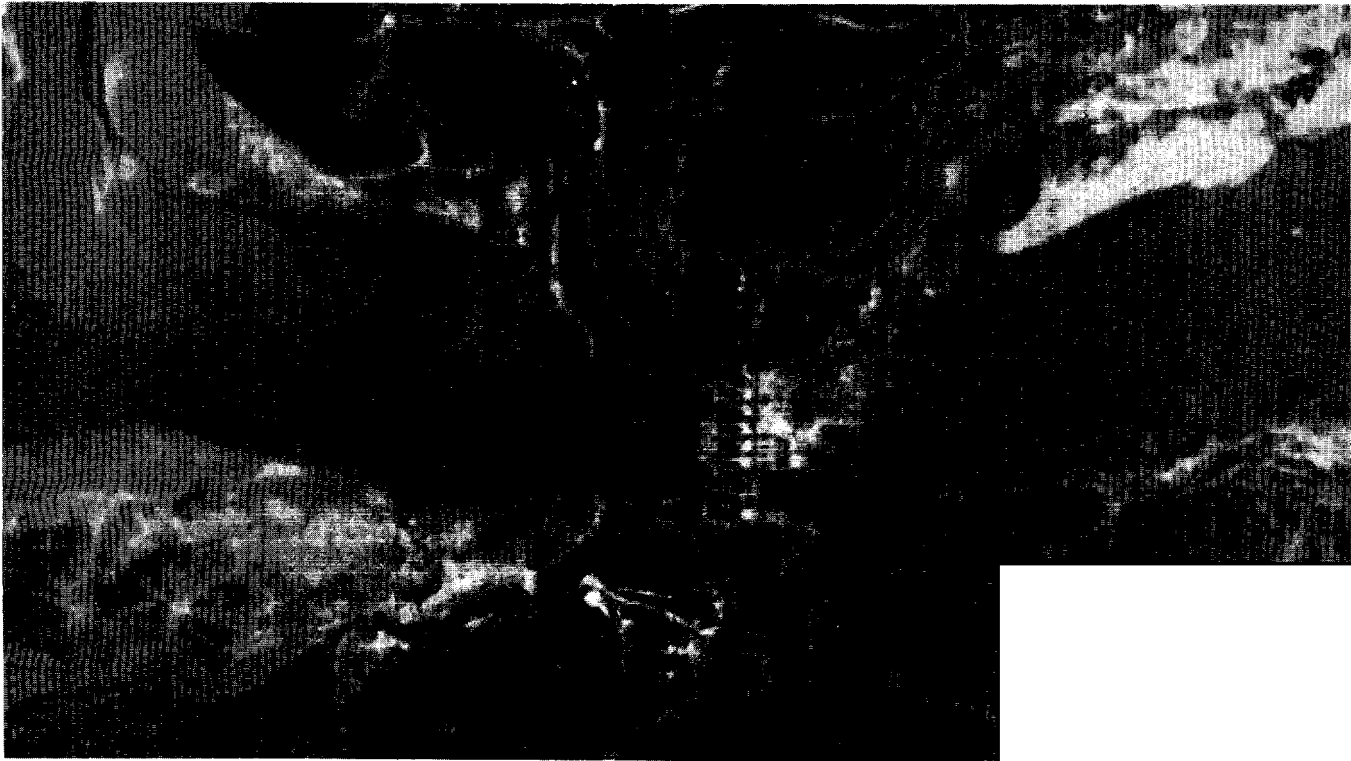
Approved For Release 2003/06/26 : CIA-RDP78T05161A001100010057-5

TOP SECRET

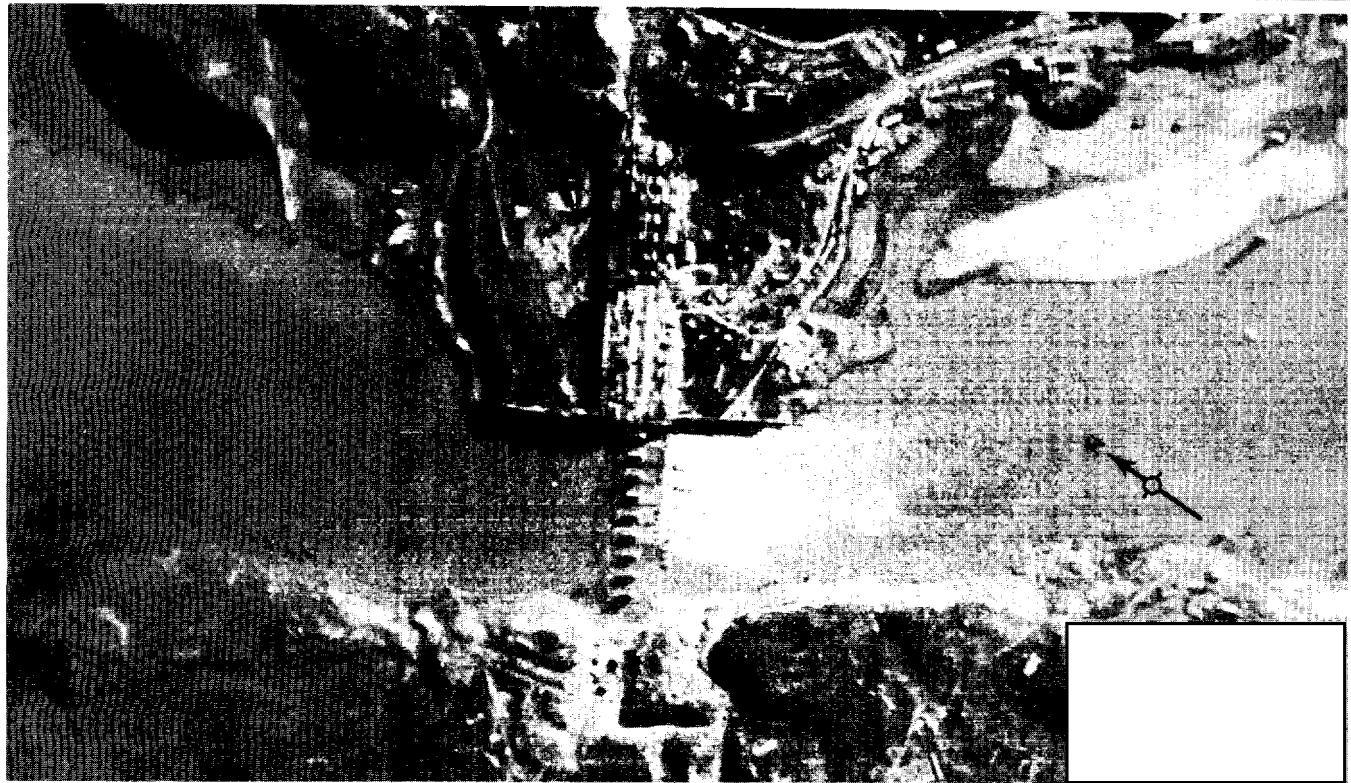
FIGURE 5

KUANG-HUA HYDRO POWER PLANT (TAN-CHIANG-KOU)

25X1  
25X1  
25X1



25X1



25X1

25X1  
25X1



Approved For Release 2003/06/20 : CIA-RDP78T05161A001100010057-5

D

Approved For Release 2003/06/20 : CIA-RDP78T05161A001100010057-5

[Redacted]

TOP SECRET

[Redacted]

Approved For Release 2003/06/20 : CIA-RDP78T05161A001100010057-5

25X1

CIA IMAGERY ANALYSIS DIVISION

[Redacted]

25X1

25X1

PA-LIEN HYDRO POWER PLANT  
NPIC NUMBER - 90

The Pa-lien Hydro Power Plant is located 13.0 nm northeast of Hsi-shui on the Hsi-shui (River) at coordinates 30 35 50N - 115 26 25E. The facility appears to be completed and consists of an earthen dam, separated spillway, and separated powerhouse. No substation or transmission lines were apparent; however, all available photography was of small scale and could have precluded detection of these facilities.

Water intakes were not apparent at the dam face or in the reservoir, making an assessment of the number of probable turbo-generators impossible; however, the powerhouse appears large enough for three or four units. Neither the powerhouse or spillway located 0.5 nm south of the dam have been observed in operation on any of the six missions covering the plant.

There has been no change at the hydro power plant during the period

[Redacted]

25X1

[Redacted]

25X1

TOP SECRET

25X1

Approved For Release 2003/06/20 : CIA-RDP78T05161A001100010057-5

TOP SECRET

FIGURE 6

25X1

25X1

PA-LIEN HYDRO POWER PLANT



25X1

25X1

25X1

TOP SECRET

Approved For Release 2003/06/20 : CIA-RDP78T05161A001100010057-5

—

**E**

[Redacted]

TOP SECRET

[Redacted]

Approved For Release 2003/06/20 : CIA-RDP78T05161A001100010057-5

25X1

CIA IMAGERY ANALYSIS DIVISION

[Redacted]

25X1

25X1

WU-HAN HEAT AND THERMAL POWER PLANT (CHING-SHAN)

[Redacted]

NPIC NUMBER - 38 H-1

25X1

The Wu-han Heat and Thermal Power Plant (Ching-shan) is located north-east of Wu-han within the Wu-han Iron and Steel Plant at 30 37 50N - 114 26 10E. The plant is coal-operated, rail-served, and includes a control house, at least six probable transformers, a switching building, three spray ponds, extensive coal handling and treatment facilities, and numerous support/storage buildings.

The boilerhouse appears to be equipped with five sets of dust-catchers and is connected to free-standing stack A by apparently five sets of flues. Walls and a new free-standing stack (B) for an addition to the boilerhouse were evident [Redacted] the length of the new wall indicates that the boilerhouse will be doubled in size when completed. The generator hall has a single longitudinal monitor and is probably complete. No generator cable leads were visible on any of the available photography.

25X1

Considerable expansion was evident during the period [Redacted] and continues to occur; the generator hall has doubled in size and expansion is currently in progress on the boilerhouse.

25X1

25X1

[Redacted]

25X1

TOP SECRET

25X1  
25X1  
25X1

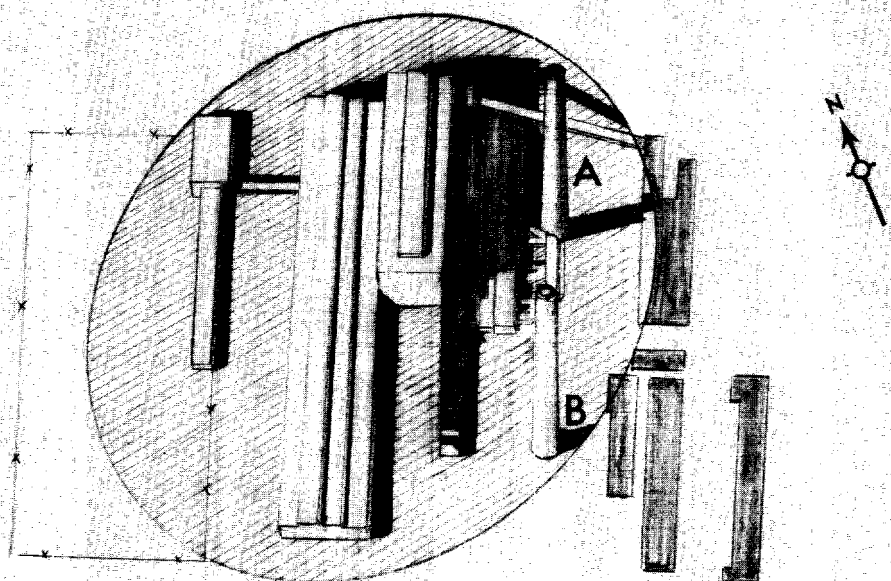
TOP SECRET

FIGURE 7

WU-HAN HEAT AND THERMAL POWER PLANT (CHING-SHAN)



25X1



25X1  
25X1  
25X1  
25X1

CONFIGURATION OF THE PLANT

TOP SECRET

Approved For Release 2003/06/20 : CIA-RDP78T05161A001100010057-5

TOP SECRET

CIA-RDP78T05161A001100010057-5

25X1

CIA IMAGERY ANALYSIS DIVISION

[Redacted]

25X1

WU-HAN HEAT AND THERMAL POWER PLANT (CHING-SHAN)

25X1

CONSTRUCTION ACTIVITY	LEVEL OF PRODUCTION
South end of the powerhouse is still incomplete. Expansion is likely.	Moderate smoke from stack A. Spray ponds are operating.
Smoke from stack A precludes analysis.	Heavy smoke from stack A.
No apparent change [Redacted]	Heavy smoke from stack A. Spray ponds are operating.
[Redacted]	
No apparent change [Redacted]	Moderate smoke from stack A.
[Redacted]	
Smoke from stack A precludes analysis.	Moderate smoke from stack A. Spray ponds are operating.

25X1

25X1

25X1

25X1

25X1

[Redacted]

25X1

TOP SECRET

25X1

~~TOP SECRET~~

25X1

CIA IMAGERY ANALYSIS DIVISION

25X1

WU-HAN HEAT AND THERMAL POWER PLANT (CHING-SHAN)

CONSTRUCTION ACTIVITY	LEVEL OF PRODUCTION
Uprights are apparent for an extension of the generator hall. Heavy smoke precludes further analysis.	Heavy smoke from stack A. Spray ponds are operating.
Stack B has been erected; no flues are yet installed. Generator hall has been extended, but heavy smoke precludes detailed analysis.	Heavy smoke from stack A. Spray ponds are operating.
The new generator hall section appears complete. Walls for a boilerhouse addition are partially erected, and one-half of the flue system for stack B is in place.	Heavy smoke from stack A. Spray ponds are operating.

25X1

~~TOP SECRET~~

25X1



Approved For Release 2003/06/20 : CIA-RDP78T05161A001100010057-5

1

F

Approved For Release 2003/06/20 : CIA-RDP78T05161A001100010057-5

[Redacted]

TOP SECRET

[Redacted]

Approved For Release 2003/06/20 : CIA-RDP78T05161A001100010057-5

25X1

CIA IMAGERY ANALYSIS DIVISION

[Redacted]

25X1

25X1

WU-HAN THERMAL POWER PLANT NO. 3

[Redacted]

25X1

Wu-han Thermal Power Plant No. 3 is located on the Chang Chiang (River) approximately 4.0 nm north of Wu chang Airfield at 30 34 50N - 114 18 40E. The plant is rail-served, coal-operated and includes a coal-unloading building, coal conveyor, integrated control house, small substation, and several support/storage buildings.

The powerhouse is equipped with a single roof stack and probably contains one boiler-generator unit. The scarring west of the powerhouse indicates that the plant may eventually expand in that direction; however, no new construction has occurred during the period [Redacted]

25X1

[Redacted] No generator cable leads, dust-catchers, or transformers could be discerned on available photography.

25X1

The only instance of apparent smoke activity occurred [Redacted] (see the accompanying Figure).

25X1

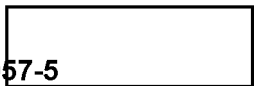
[Redacted]

25X1

TOP SECRET

25X1

Approved For Release 2003/06/20 : CIA-RDP78T05161A001100010057-5



25X1

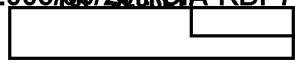
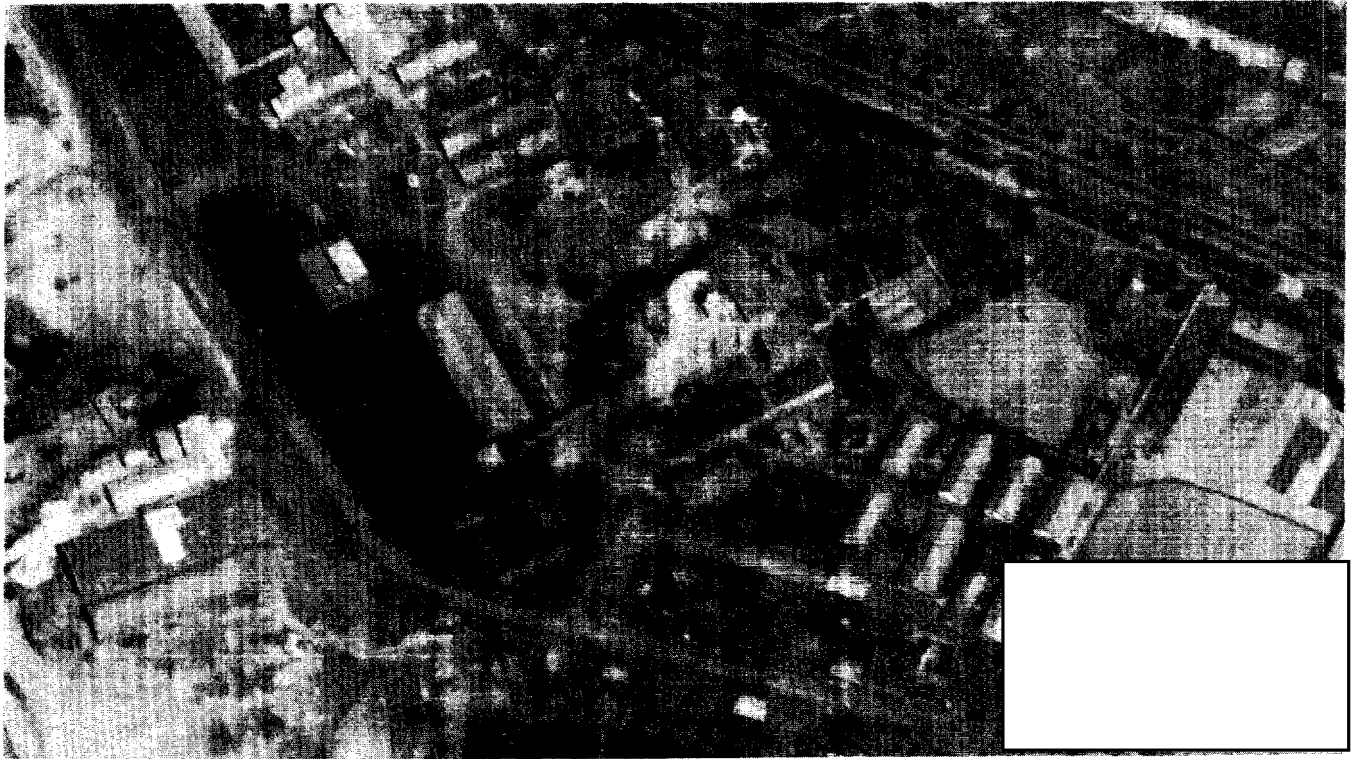


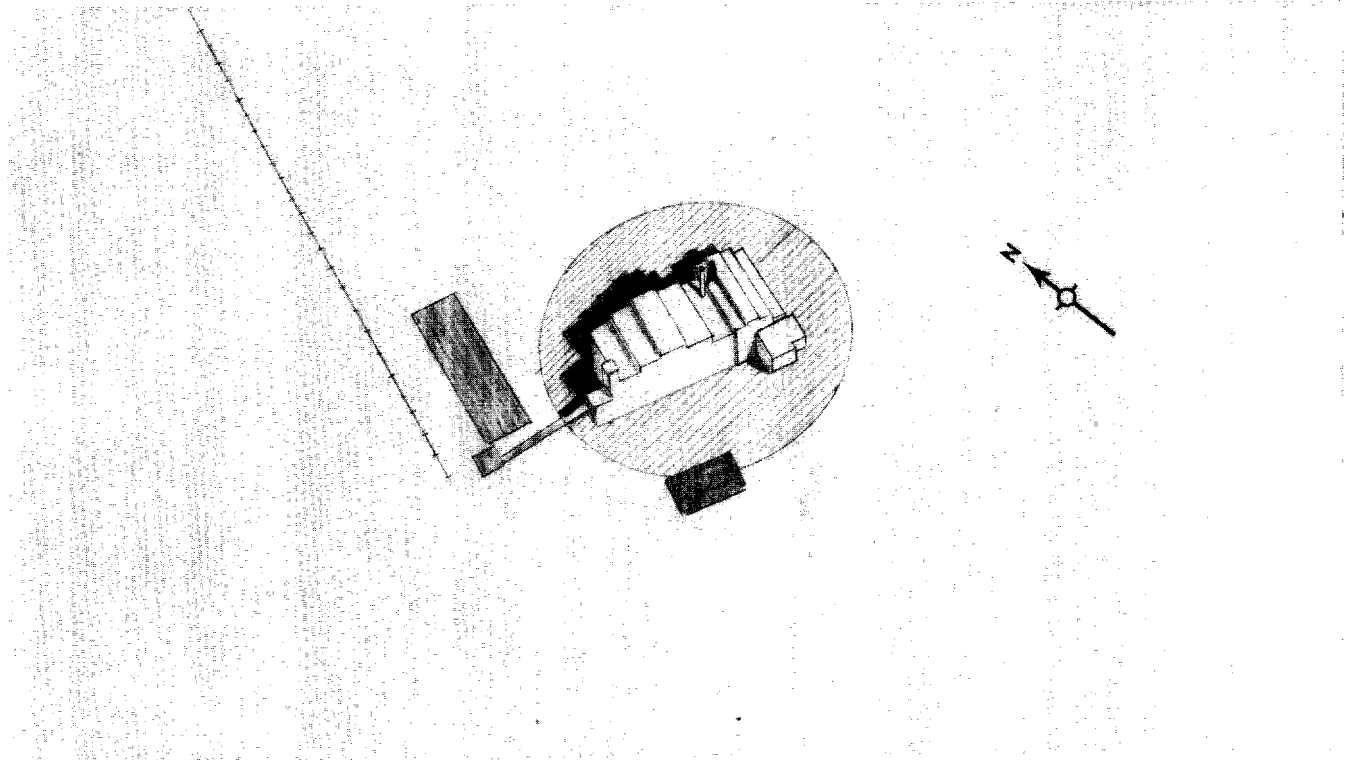
FIGURE 8

25X1

WU-HAN THERMAL POWER PLANT NO. 3



25X1



25X1

25X1

Approved For Release 2003/06/20 : CIA-RDP78T05161A001100010057-5



**TOP SECRET**

**TOP SECRET**