

74220
Soil (or clod)
1180 grams

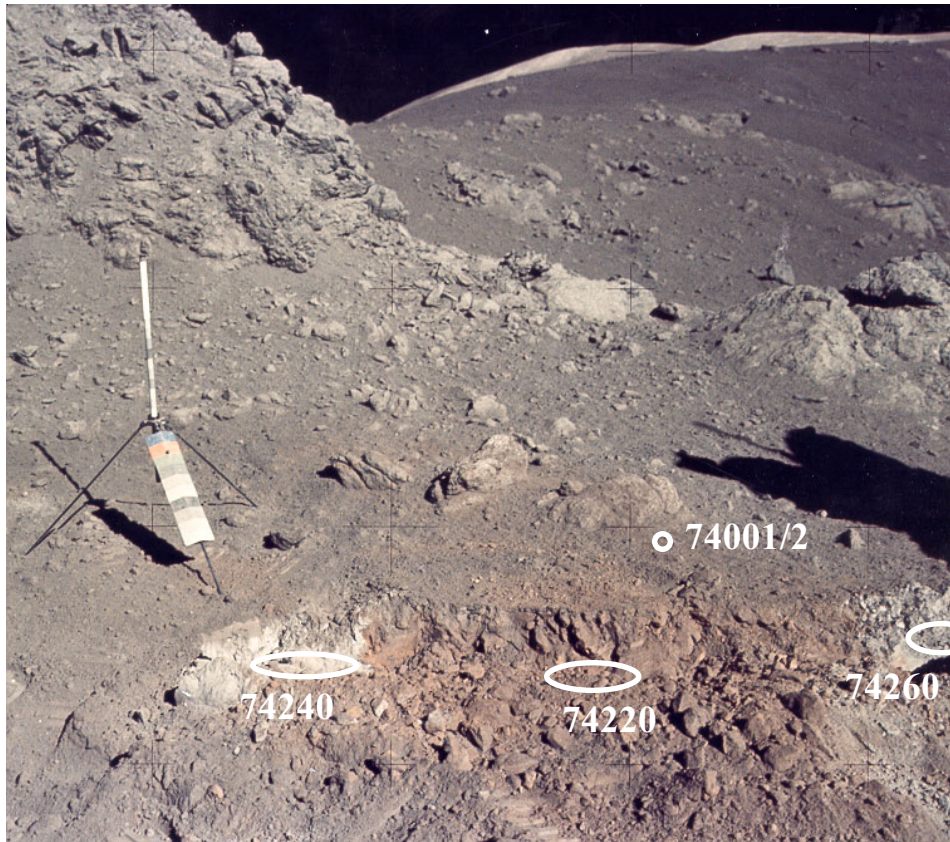


Figure 1: Photo of trench dug into orange soil at rim of Shorty Crater, Apollo 17. NASA ASI7-137-20990 (see map and sketch, figures 21, 22).

Introduction

Note: Please see the exciting transcript in the section on 74240.

The Orange Soil sample discovered at Shorty Crater, Apollo 17 (74220) is not like other lunar soil samples and is more like the green glass clod from Apollo 15. In fact the astronauts noted that it broke up in angular pieces, and one of these can be seen in the bag during PET. 74220 and most of the drive tube are nearly

pure orange glass, while 74240 and 74260 and the top 5 cm of the drive tube are mixtures of orange glass and an ancient mare soil. A high portion of the orange glass in the drive tube is devitrified, and now black, due to fine olivine needles and ilmenite feathers. This is often referred to as “black glass”, but compositionally, it is found to be the same as the orange glass.

The orange and black glass samples were identified as a pyroclastic deposit (Heiken et al. 1974, Meyer et al. 1975, Heiken and McKay 1977). Other origins (vapor condensation, impact) have been considered and rejected. Roedder and Weiblen (1973) considered an origin by meteorite impact into a lava lake, but this hypothesis has also been discounted (see also discussion in section on 74240).

Orange Soil Samples

	Grams	Is/FeO	
74220	1180	1	surface sample
74240-4	924	5.1	trench sample
74260-4	527	5	trench sample
74002	909.6	0.2 to 3	drive tube, top
74001	<u>1072</u>	0.2	drive tube, bottom
total	4567		

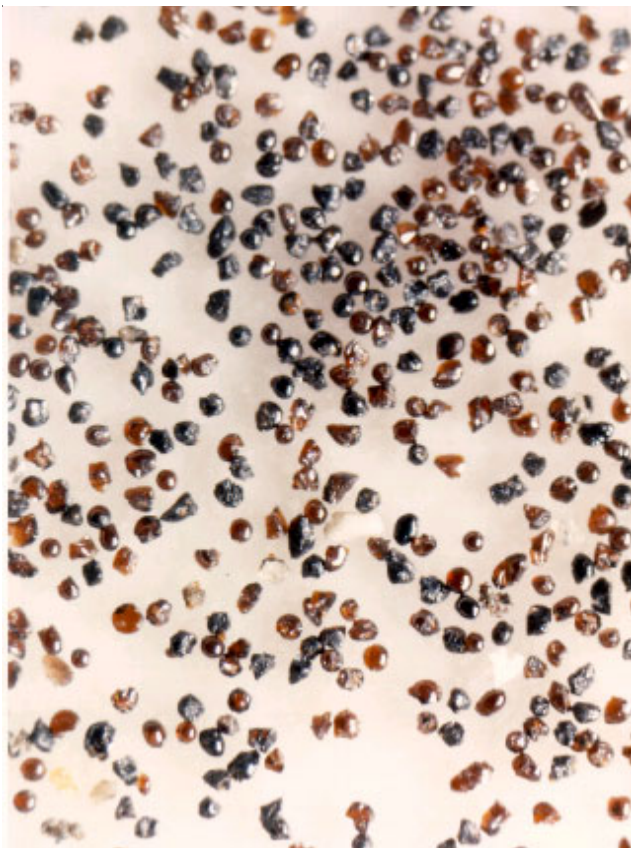


Figure 2: Sieved and washed fraction of orange soil, 74220. Particle size is 100 microns. NASAS73-15085.

Mafic volcanic glasses are found all over the moon (Delano 1986), but the Orange Soil (74220) and the Green Glass Clods (15425-7) are the “type samples” for pyroclastic deposits. The Orange Soil was found to be enriched volatile elements (Zn, Pb, S, Cl etc) and the glass beads were found to have a thin coating of condensed volatiles (Meyer et al. 1975, Butler and Meyer 1976). The Orange Soil generally contains high levels of endogenous Ni (not due to meteorite

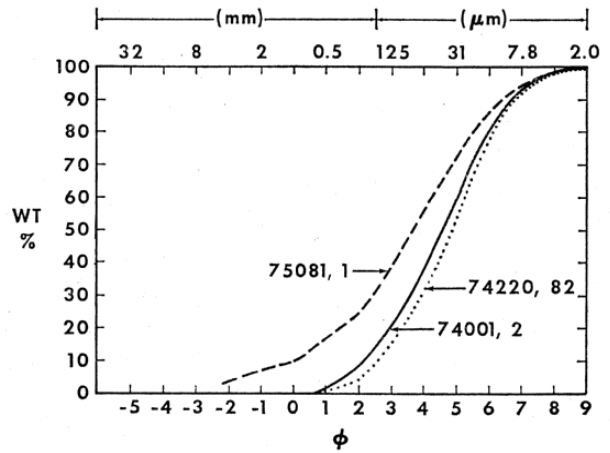


Figure 3: Grain size distribution of orange soil (74220) and core tube (74001) compared with typical soil (75081) (from Heiken et al. 1974). Mean grain size of 74220 is 40 microns.

contamination), as well as significant amounts of highly-siderophile-elements (Re, Os etc) that seem to be due to meteoritic contamination (Walker et al. 2004).

While the age of the orange glass is known to be about 3.6 b.y. (the same age as the mare basalts), the exposure age of Shorty Crater is ~17 m.y. (Eugster et al. 1981, Bogard and Hirsch 1978, Crozaz 1979). 74220, 74240 and 74260 also have evidence for a pre-exposure, at depth, perhaps after the initial eruption on the surface.

Note: Additional details on these samples can be found in the sections of 74240 and 74002.

Petrography

Although the orange soil is nearly pure orange glass, only about 1/3 of the sample is unbroken spheres and ovoids, while about 2/3 is made up of broken spheres and angular glass fragments (Heiken et al. 1974, Heiken

Mineralogical Mode

reference	74220	74220	74240	74260	74001	74002top	74002 (90-150 micron)
	Heiken and McKay 1974			McKay et al. 1978			
Agglutinates	1.3 %	2.7	8	7.7		13.2	
Basalt	1.6	2	30	23.7		3.6	
Breccia	0.3	1.3	16.9	16.1		1.4	0.1
Anorthosite, Norite			0.6				
Plagioclase		1	4.6	2.7	1.6	0.1	
Pyroxene	0.3	0.3	11.3	13.7	0.3	1.4	
Olivine				0.3			
Ilmenite		0.3	1.3	2.3			
Glass							
Orange	66.3	83.6	4	7.7	8		
Black	29.3	6.7		2	73.3	91.1	99.9
Colorless	0.3		4.6	3.7			
Brown		1.3	2.6	1.7	16.6		
Ropy		0.7	14.3	18.1		0.1	
Other			0.3	0.3		0.3	

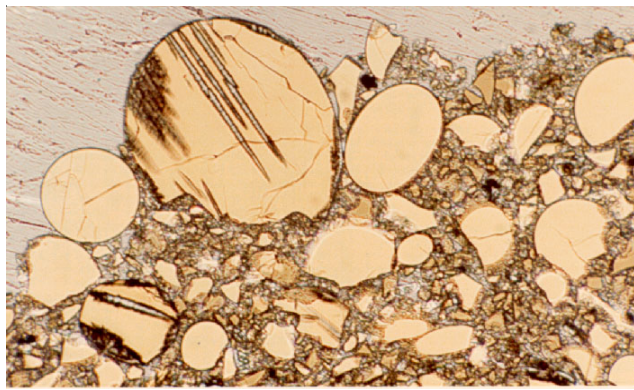


Figure 4: Photomicrograph of thin section of 74220 illustrating orange glass beads and broken fragments. The orange glass partially crystallizes olivine needles with fine ilmenite margins. Large bead in this photo is ~ 1 mm. NASA#S79-27295.

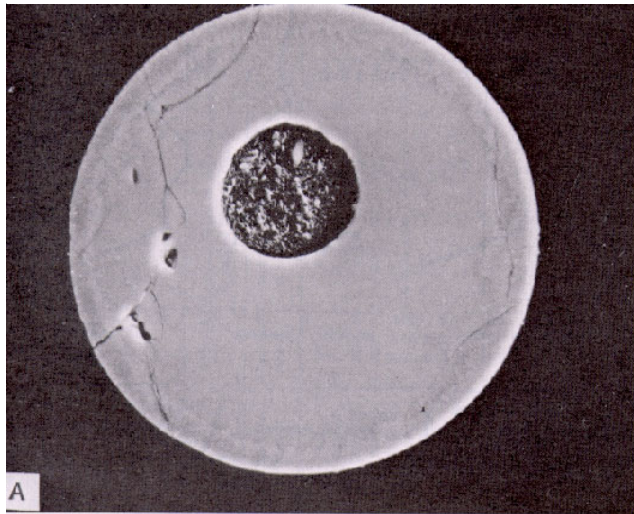


Figure 5: Rare vesicle in glass sphere from 74001 (from Heiken and McKay 1978). Diameter of sphere is 140 microns.

and McKay 1974). None of the glass in this sample is similar to lunar agglutinates, nor contains broken mineral or lithic fragments characteristic of impact glass. The average grain size of 74220 is ~ 40 microns (figures 3 and 24). The orange soil samples (as measured by the Is/FeO parameter) are extremely

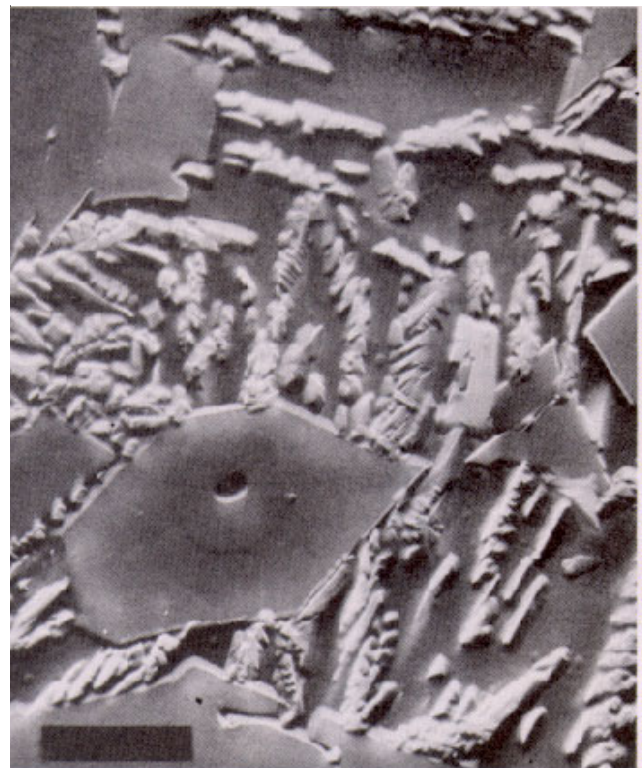


Figure 6: Scanning-electron-microscope image of ion-etched thin section of "black glass" droplet from 74002 illustrating minute olivine, ilmenite and chromite quench crystals in glass matrix. Ilmenite feathers are bright in this BSE image, but they cause the black appearance of glass beads. From Heiken and McKay (1977). Black scale bar is 10 microns.

immature (Morris 1978, Morris and Gose 1977). Thus, this soil is not like that of other lunar soils and is interpreted as a pyroclastic deposit (Heiken et al. 1974).

The orange soil is mostly orange glass beads and broken fragments of the same (figure 2). Heiken and McKay (1974) and McKay et al. (1978) determined the mineralogical mode and described the shape and crystallinity of the glass beads (see table). The petrography of the core (74002, 74001) is described in McKay et al. (1978). The core varies in its ratio of

Shape and Crystallinity of Glass Droplets (from Heiken et al. 1974, Heiken and McKay 1978)

Sample #	depth	droplet shape			crystallinity		
		sphere	ovoid	compound	glass	partly	crystalline
74002,179	5 cm	47 %	42	11	46 %	30	24
74002,181	18	46	37	17	15	19	66
74001,98	32	70	26	4	4	11	86
74001,113	44	53	34	13	2	9	90
74001,125	57.5	35	23	41	2	5	93
		sphere	ovoid	broken fragments			
74220,85A		20 %	5	74			
74220,85B		30	11	58			
74220,85C		20	5	75			
74220,85D		32	2	66			

orange glass to devitrified black glass. Many beads are broken, presumably by the impact that made Shorty Crater. Few glass beads have vesicles (figure 5).

The devitrification features of the orange and black glass spheres in 74220 and 74001 are described by Haggerty (1974), Arndt and Engelhardt (1987) and Heiken and McKay (1978). Quench crystals of olivine and ilmenite (figures 4 and 6) make devitrified orange glass appear opaque (black). These black glass droplets are found to have the same chemical composition as the orange glass (Heiken and McKay 1974). Olivine composition is Fo₆₈₋₈₂ (Prinz et al. 1973, Taylor and Carter 1974 and Heiken et al. 1974).

The grey samples collected from the ends of the trench (74240 and 74260) also contain highly-aluminous ropy glasses of presumed impact origin (Ferland et al. 1977, Korotev and Kremser 1992) as well as a variety of breccias and basalts.

The surfaces of the orange glass spheres are found to have a unique coating of micromounds (100 to 1000 im) (Heiken et al. 1974, Meyer et al. 1975, Clanton et al. 1978). In some places the coating has been scraped off (figure 7). The coatings were found to be made of mixed salts, with ZnS as a main component (figure 8). Very few micrometeorite craters were found on the surfaces of the spheres.

Surface-correlated volatiles

Tatsumoto et al. (1973) was the first to notice that the 74220 contained surface-correlated volatiles (Pb). Gibson and Moore (1973a,b) noted that 74220 was unusual as a lunar soil in that it gave off SO₂ at a low temperature (figure 13). By analyzing different size fractions, Thode and Rees (1976) showed that the sulfur was enriched on the surfaces of the grains, but they found that ³⁴S remained constant over different size fraction (unlike the case for all other lunar soils). Jovanovic et al. (1973) found that 74220 was enriched in Cl and Te and suggested that the source of high halogens was "fumarolic activity". Jovanovic and Reed (1974) and Wanke et al. (1973) found 74220 to be enriched in halogens (table 6) and Goldberg et al. (1976) showed the F to be a surface deposit (figure 9).

Meyer et al. (1975) and Wasson et al. (1976) hypothesized that halogens were in the vapor of the lava fountain, because of the increased volatility of various metals as chlorides and because some Cl and

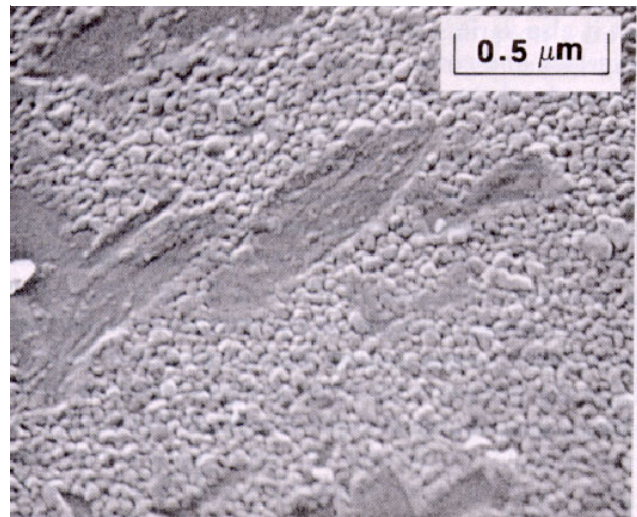


Figure 7: ZnS rich coating on glass sphere from 74001 (from Clanton et al. 1978).

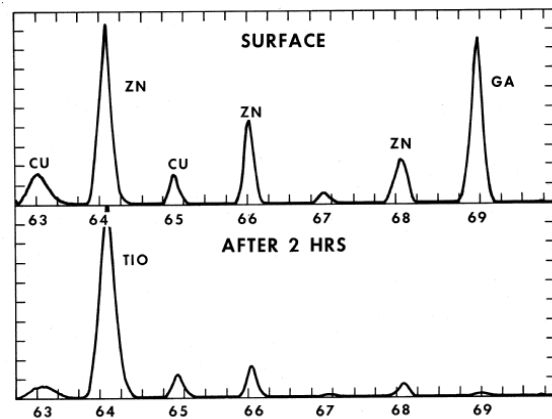


Figure 8: Ion microprobe mass scans of surface and ion-etched surface of orange glass sphere from 74220 showing that Zn, Cu and Ga were present in the surface deposit, but etched away after 2 hrs. of ion bombardment (Meyer et al. 1975).

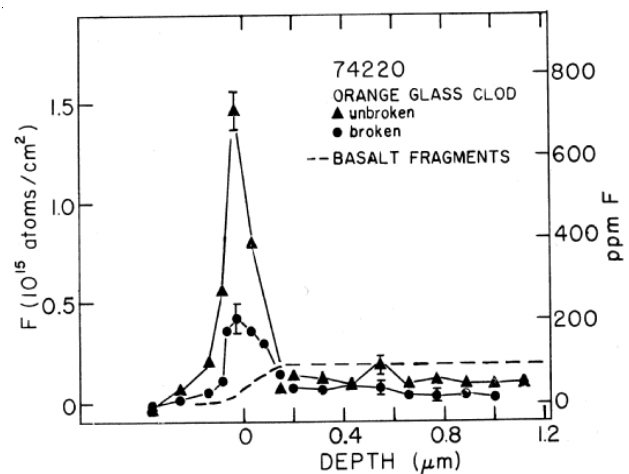


Figure 9: Fluorine depth profile for samples of 74220 (from Goldberg et al. 1976)

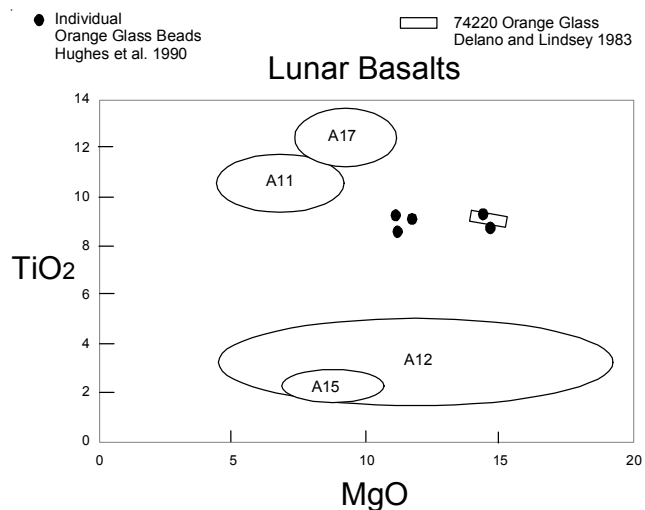


Figure 10: Orange glass compositions from 74220 (data from Reid et al. 1973, Delano and Lindsey 1983). Analyses of individual orange glass beads from other orange soil samples are variable (data from Hughes et al. 1990).

F was found on the surface of the glass. Cirlin and Housley (1977) used a technique that involved HF treatment to enhance thermal release of Pb, to show that the Pb was indeed present as PbCl₂ on the surface of the orange glass. Bell et al. (1974) reported evidence of FeCl₂.

Reed et al. (1977) and others have carefully studied the behavior of Zn, Pb and other elements during various kinds of leaching and conclude that although these elements are present in surface coating, they are not easily released. Krahenbuhl (1980) showed convincingly that Zn, Hg, Ge, Au and Ir were on the surfaces of the particles by carefully analyzing different grain sizes of the core tube 74002/1. Eugster et al. (1981) also showed that Br, and I were “anti-correlated” with grain size and thus on the surfaces of the glass beads. Meyer et al. (1975) used the ion microprobe to show that Zn, Cu, Ga, Pb and other elements were on the surfaces of glass beads from 74220. (figure 8). Butler and Meyer (1976) showed that the prevalent coating material (micromounds) contained sulfur. Nearly everyone agrees that the volatile element deposit on the glass beads was due to condensation of gas from volcanic eruption (figure 12).

Double Drive Tube 74002 – 74001

A 67 cm long double drive tube was collected from close to the trench at Shorty Crater. Nagel (1978), McKay et al. (1978), Morris et al. (1978), Bogard and Hirsch (1978), Blanchard and Budahn (1978), Crozaz

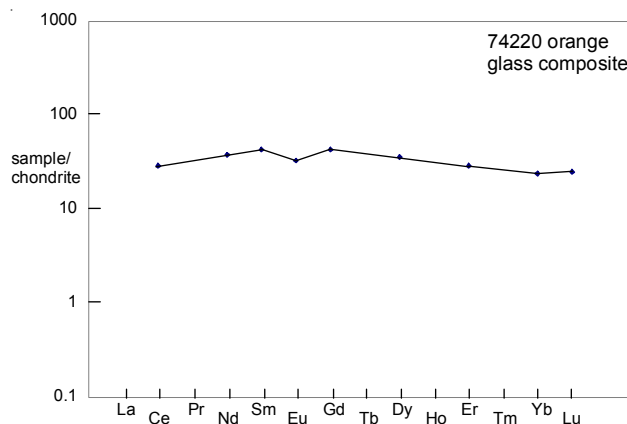


Figure 11: Normalized rare-earth-element pattern for composite of orange glass spheres from 74220 (data from Philpotts et al. 1974).

(1978) and Heiken and McKay (1978) studied the double drive tube. Eugster et al. (1979, 1980, 1981) determined the age and exposure history of this important sample. Clanton et al. (1978) and Cirlin et al. (1979) studied the surface coatings on the particles.

Chemistry

There are at least three important, variable, chemical components to consider in understanding the orange soil (endogenous volcanic melt, volcanic exhalation, and meteoritic contamination). The volcanic exhalation is seemingly coupled to the endogenous component in time (Tera and Wasserburg 1976). Morgan and Wandless (1979) used volatile and siderophile element data from the core tube to unravel the contributions from meteorites and volcanic exhalations. Recently, Walker et al. (2004) have shown that the highly-siderophile-elements (namely Os) are greatly depleted in the orange glass.

Table 1 and figure 11 give the chemical composition of the bulk samples. Portions of the orange soil (74220) and the core (74002/1) are relatively uncontaminated by lunar regolith, and closely match the composition of the glass beads. However, in the bulk trench samples (74240 and 74260) and the top 5 cm of the core (74002), there is also a variable amount of mixing (by gardening) with lunar regolith. 74240 and 74260 are twice as aluminous as 74220 due to a high percentage of highly aluminous ropy glass (tables).

Numerous investigators analyzed a large number of orange and black glass beads from Apollo 17 (table 5). Delano and Lindsey (1983) and Delano (1986) have identified several (~25) groups of volcanic glass, but

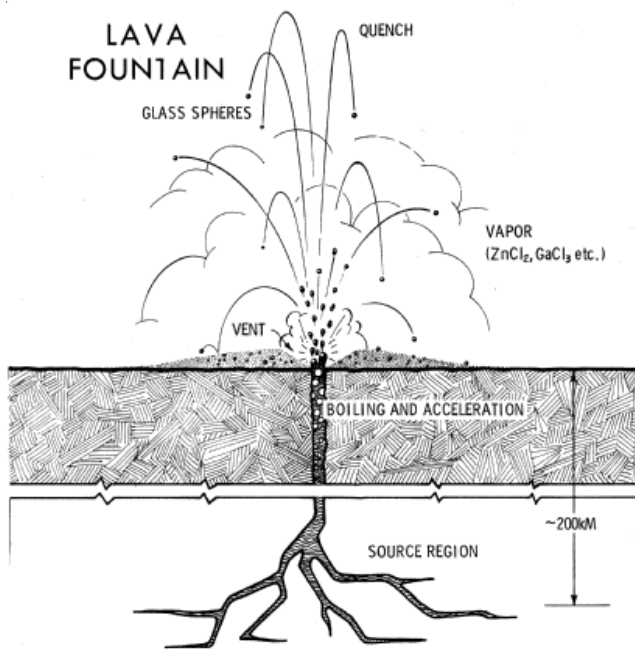


Figure 12: Sketch of hypothetical lava fountain that could have produced the features seen in the volcanic glass beads in 74220 (from Meyer et al. 1975).

found that the orange glass from 74220 was very constant in composition (figure 10). Hughes et al. (1990) analyzed some of the individual glass particles for a long list of elements (table 2).

Delano (1986) found that mafic volcanic glasses always have relatively high Ni, so Ni, at least, is not an indicator of meteoritic contamination in these samples.

The special feature of the orange glass samples is that they are found to be enriched in Zn, Cu, Ag, Cd, Tl, Br (and other metal halides) when compared to other lunar samples (Morgan et al. 1974, Duncan et al. 1974) and this has been much discussed (see section of surface-correlated volatiles). Table 6 tabulates some of the analytical results for halogens and sulfur in the orange glass samples. While sulfur is not high in the bulk sample, it is an important component in the surface deposits (see Butler and Meyer 1976).

Various investigators (Walker et al. 2004, Krahenbuhl 1980, Wasson et al. 1976) have etched or leached the surfaces of the glass beads in an effort to separate the components (figure 14).

Radiogenic age dating

Husain and Schaeffer (1973), Huneke et al. (1973), Eberhardt et al. (1975), Alexander et al. (1978) and

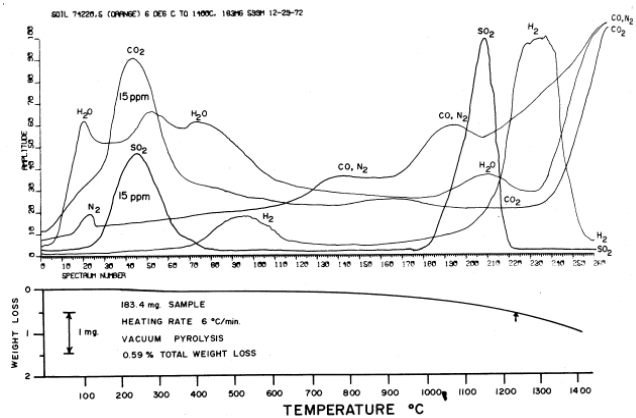


Figure 13: Gas release profile of 74220 showing low temperature release of carbon and sulfur species (from Gibson and Moore 1973).

Huneke (1978) determined the age of the orange glass spheres by ^{39}Ar - ^{40}Ar plateau (figures 15, 16 and table). In a “tour-de-force”, Huneke dated individual glass beads at about 3.6 b.y. (figure 18). Tera and Wasserburg (1976) used the lead isotopes leached from the surface, along with the residue, to date the age of formation of the orange soil (figure 17). U, Th and Pd data for 74220, 74240, 74260 and 74001 are also given in Nunes et al. (1974), Silver (1974) and Tatsumoto et al. (1987). They note that ^{204}Pb is relatively high and easily released by mild thermal heating, or leaching.

Lee et al. (1997) reported the Hf, W and tungsten isotopic composition of bulk 74220 and handpicked glass beads.

Cosmogenic isotopes and exposure ages

Keith et al. (1974), Fruchter et al. (1978) and Murrell et al. (1979) determined the radioactivity of 74220 and 74002/1, due to cosmic ray interaction (table 4). Based on ^{22}Na , ^{26}Al activity, Fruchter et al. (1978) found that the top 2-3 cm of the core has been actively mixed with mare components (gardened) and about 2 cm of soil might be missing from the top of the core. Murrell et al. (1979) found the top of the core was undersaturated in ^{53}Mn .

Kirsten et al. (1973), Fleischer and Hart (1974), Hutcheon et al. (1974) and Crozaz (1978) reported nuclear track ages for orange soil samples (~ 10 m.y.).

Kirsten et al. (1973), Schaeffer and Husain (1973) and Hintenberger et al. (1974) reported the exposure age of 74220 as 30 m.y., 32 m.y. and 27 m.y., respectively. However, Bogard and Hirsch (1978) found that the data

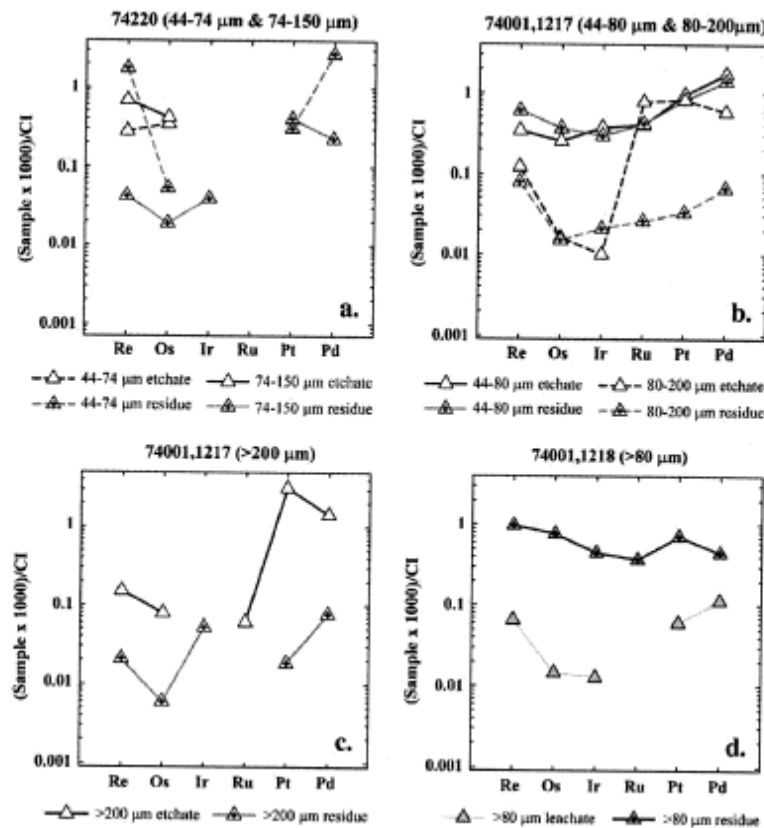


Figure 14: Concentration of highly-siderophile-element (HSE) elements in etchates and residue of hand-picked orange glass spheres (large and small), from 74220 and 74001 (core). Data and figure from Walker et al. (2004). See table 3.

for the nearby core required a two-stage cosmic-ray exposure – 20 m.y. initially, followed by 10 m.y. (the presumed age of Shorty Crater). Eugster et al. (1977 and 1981) offer a different irradiation model based on an age of ~17 m.y. for Shorty Crater. The sample may have also been irradiated for up to 35 m.y., right after it erupted !

Another interesting discovery was that the Apollo 17 orange soil sample is unique among all lunar soils, in that it shows no surface ^{18}O , ^{30}Si or ^{34}S enrichment, which means it could not have been exposed to the lunar surface for any length of time (Taylor and Epstein 1974, Thode and Rees 1976).

Processing

The location of the trench and core tube on the rim of Shorty Crater are discussed in Muehlberger et al. (1973) and Wolfe et al. (1981) (figure 21 and 22) and the samples were described in Apollo 17 PET (1973).

Only a portion of 74220 was sieved. A large clod of orange soil can be seen in the bag when it was opened in PET. In the sieving that was done, there were some orange glass clods that were found, but these remain unstudied (figure 20). There also remain unsieved portions of 74240 and 74260 (figure 23).

Various investigators (e.g. Krahenbuhl 1980, Eugster 1981) also sieved the samples to obtain results on different size fractions.

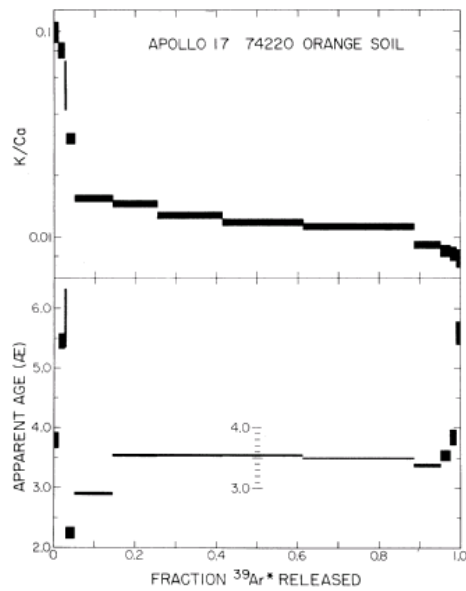


Figure 15: Argon release diagram for composite of orange glass spheres from 74220 (from Huneke et al. 1973).

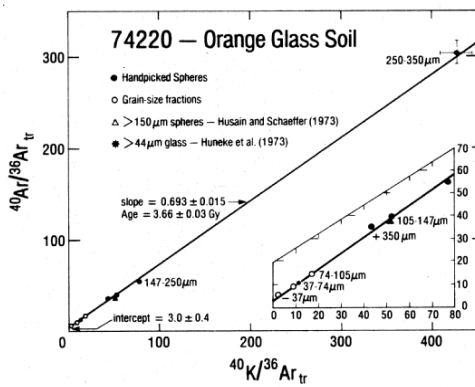


Figure 16: K/Ar data for orange glass from 74220 (from Alexander et al. 1978).

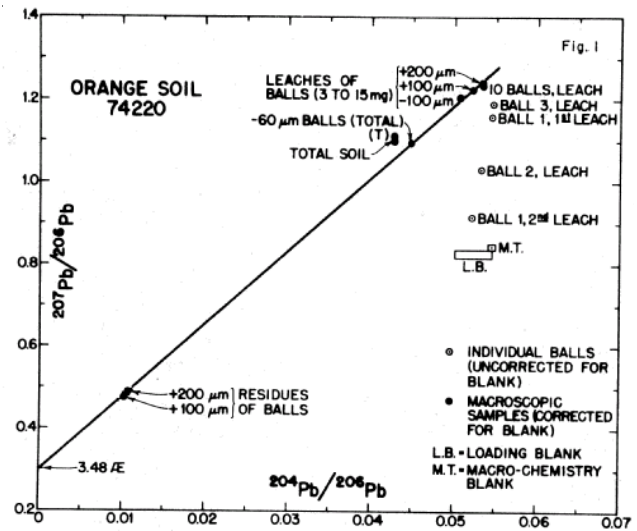


Figure 17: Pb/Pb diagram for orange glass spheres and composites from 74220 (from Tera and Wasserburg 1976).

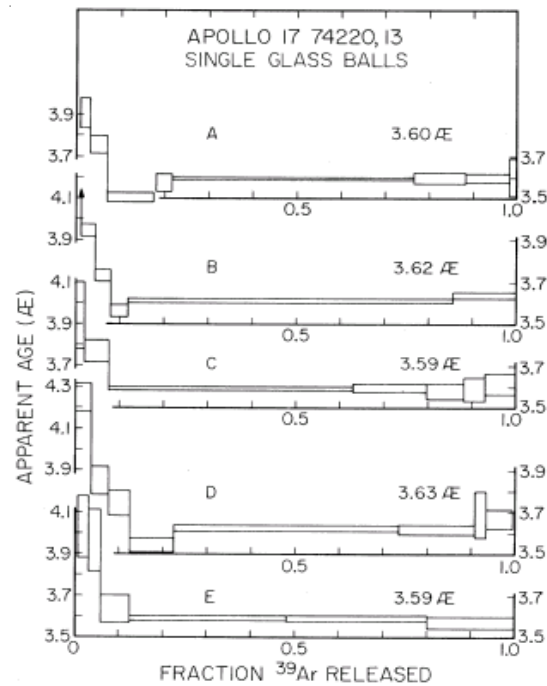


Figure 18: Argon release patterns for individual orange glass beads from 74220 (from Huneke 1978).

Summary of Age Data for 74220 and 74001

	Ar/Ar	Pb/Pb	
Husain and Schaeffer 1973	3.71 ± 0.06 b.y.		74001
Eberhardt et al. 1973	3.67 ± 0.04		Ar/Ar
Eberhardt et al. 1975			3.66
Huneke et al. 1973	3.54 ± 0.05		
Huneke 1978	3.60 ± 0.04		
Alexander et al. 1978	3.66 ± 0.03		
Saito and Alenxander 1979			3.7
Tatsumoto et al. 1973		3.63	
Tera and Wasserburg 1976		3.48 ± 0.03	
Hutcheon et al. 1974	~3.7 (fission track age)		

Note: Beware decay constant.

Other Measurements for Orange Soil

Viscosity and heat capacity

Uhlmann et al. (1973)

Magnetics

Brecher A. and Morash K.R. (1973)

Brecher et al. (1974)

Olhoeft G.R. and Stangway D.W. (1973)

Stone et al. (1982)

Isotopes

Epstein S. and Taylor H.P. (1973)

Taylor H.P. and Epstein S. (1973)

Thode H.G. and Rees C.E. (1976)

Silver (1974)

Tatsumoto et al. (1973, 1978)

Tera and Wasserburg (1976)

Rare Gasses

Eberhardt et al. (1975)

Eugster et al. (1977, 1979, 1980, 1981)

Bogard and Hirsch (1978)

Hintenberger et al. (1974)

Kirsten et al. (1973)

Gas release

Epstein S. and Taylor H.P. (1973)

Gibson E.K. and Moore G. (1973)

Gibson E.K. and Moore G. (1974)

Jovanovic S., Jensen K. and Reed G.W. (1973)

Nuclear Tracks

Crozaz (1978, 1979)

Kirsten et al. (1973)

Fleischer and Hart (1974)

Hutcheon et al. (1974)

Experimental Petrology

Green et al. (1975)

Sato (1979)

Adsorption Isotherms

Cadenhead and Stetter (1974)

Cadenhead and Buerget (1974)

Depth Profile

Murrell et al. (1979)

Fruchter et al. (1978)

Surface features

Carter et al. (1973)

Holmes et al. (1974)

Butler (1978)

Grant et al. (1974)

Spectra

Pieters et al. (1980)

Mao et al. (1973)

Vaughan and Burns (1973)

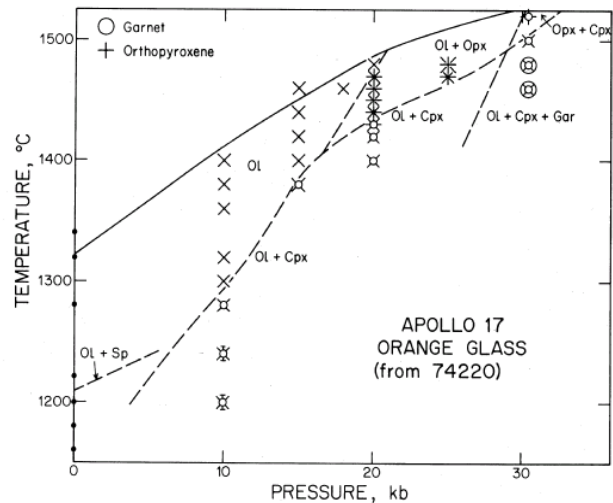


Figure 19: Experimental crystallization of 74220 orange glass at high pressure (from Green et al. 1975).



Figure 20: Clods of orange soil, sample number 74220,8. Scale in mm. NASA photo# S75-34259.

Table 1a. Chemical composition of Shorty Trench.

<i>reference weight</i>	Kieth 74 74220	Rhodes 74 74220 (b)	Wiesmann 74220 (a)	Rhodes 74240	Rhodes 74241	Wiesmann 74241 (a)	Rhodes 74260	Nava 74 74220	Nava 74 74241	Rose 74 74241	Rose 74 74261	core ave. Blanchard 78 74001/2
SiO ₂ %		38.57		40.78	41.55		41.22	38.9	42.3	42	42.08	
TiO ₂		8.81	8.5	8.61	7.45		7.68	8.96	7.33	7.9	7.45	8.9
Al ₂ O ₃		6.32		12.54	13.35		13.25	6.38	13.69	13.19	13.7	5.8
FeO		22.04		15.84	14.89		15.31	22.34	14.66	14.84	14.96	23.7
MnO		0.3		0.24	0.22		0.23	0.255	0.202	0.2	0.19	0.27
MgO		14.44		9.15	9.19		9.47	14.76	9.88	9.17	9.56	15
CaO		7.68		11.36	11.54		11.37	7.01	10.89	11.56	11.25	7.6
Na ₂ O		0.36		0.38	0.48		0.38	0.43	0.48	0.43	0.42	0.42
K ₂ O	0.082	0.09	0.084	0.12	0.12	0.12	0.12	0.076	0.123	0.14	0.13	
P ₂ O ₅		0.04		0.09	0.1		0.09	0.097	0.124	0.1	0.09	
S %		0.07		0.14	0.12		0.12					
<i>sum</i>												
Sc ppm										59	57	48
V										75	70	
Cr			4650			2676				2874	3284	5200
Co										28	38	66
Ni		83		80	101		99			126	133	
Cu										28	32	
Zn		292		96	96		109			37	35	
Ga										10	10	
Ge ppb												
As												
Se												
Rb		1.2	1.107	2.3	2.5	2.423	2			1.8	2	
Sr		205	209	163	154	159	167			144	151	
Y		49		80	74		75			90	74	
Zr		182	185	235	232	218	239			352	286	
Nb		15		19	19		19			14	23	
Mo												
Ru												
Rh												
Pd ppb												
Ag ppb												
Cd ppb												
In ppb												
Sn ppb												
Sb ppb												
Te ppb												
Cs ppm												
Ba			76.4			112				84	140	
La			6.25			9.95						5.9
Ce			19			28.8						21
Pr												
Nd			17.8			24						
Sm			6.53			8.55						6.9
Eu			1.8			1.6						1.88
Gd			8.52			12.6						
Tb												1.6
Dy			9.4			13.7						
Ho												
Er			5.1			8.07						
Tm												
Yb			4.43			7.45				10	7.2	4.2
Lu			0.611									0.59
Hf												6.3
Ta												1.2
W ppb												
Re ppb												
Os ppb												
Ir ppb												
Pt ppb												
Au ppb												
Th ppm	0.65					1.32						0.4
U ppm	0.164		0.16			0.37						
<i>technique</i>												

Table 1b. Chemical composition of Shorty Trench.

reference	spheres				bulk								500-62 micron		
	Philpotts 74 (a)			Korotev 92				Wasson 76				Wanke 73			
weight	74220	74220S	74241	74220	74241A	74241B	74261	74220	leach	etch	residue	total	74220	74241	
SiO ₂ %				38.3	40.8	41.3	41.3						(c)	39.36	42.36
TiO ₂				8.8	8.7	7.6	7.5						(c)	8.09	6.49
Al ₂ O ₃				6.8	12.9	13.8	13						(c)	6.52	13.9
FeO				22.4	16.2	15.4	15.8	23.8	0.68	2.56	20.97	24.19	(c)	21.87	15.18
MnO								0.275	0.01	0.03	0.23	0.272	(c)	0.25	0.19
MgO				14.28	8.8	9.02	9.68						(c)	14	9.27
CaO				7.8	11.1	11.4	11.1	6.16	0.18	0.01	6.16	6.43	(c)	7.4	11.4
Na ₂ O	0.078	0.064	0.124	0.366	0.457	0.471	0.476	0.274	0.01	0.03	0.206	0.247	(c)	0.4	0.45
K ₂ O														0.076	0.1
P ₂ O ₅														0.048	0.1
S %															
sum															
Sc ppm				48.3	61	57.3	53.9	37	1	0.18	35	36	(c)	42.5	50.2
V														130	
Cr				4650	2780	2800	2950	5030	136	456	4460	5050	(c)	4030	2320
Co				61.5	26.3	26.7	30.2	68	2.4	6.7	60	69	(c)	55.5	24.5
Ni				113	90	140	120	110	3.6	8.9	71	83	(c)	67	82
Cu														25	21
Zn								194	43	5.3	17	65	(b)	270	88
Ga								16.1	2.9	0.79	2.5	6.2	(b)	16.5	13.4
Ge ppb								401	80	20	143	243	(b)	260	210
As														15	22
Se															
Rb	1.11	0.644	2.55											1.86	
Sr	206	205	155	235	170	210	140							160	140
Y														44	61
Zr	184	194	565	175	270	200	250							162	204
Nb														13	15.1
Mo															
Ru															
Rh															
Pd ppb															
Ag ppb															
Cd ppb								314	122	7.2	28	157	(b)		
In ppb								29	6.6	0.41	0.71	7.7	(b)		
Sn ppb															
Sb ppb															
Te ppb															
Cs ppm														0.078	
Ba	78.4	73.9	116	78	120	109	127						(c)	130	120
La				5.94	9.72	9.93	9.37	5.4	0.35	0.06	5.2	5.6	(c)	6.5	10.9
Ce	19.9	17.7	29.6	18.1	29	29.5	27	19	0.9	0.2	19	20	(c)	18	34
Pr														2.5	4.4
Nd	17.9	17.4	24.8	17	22	24	17							16	31
Sm	6.5	6.4	8.8	6.71	9.05	8.72	8.21	5.2	0.29	0.06	5.3	5.6	(c)	6.7	8.7
Eu	1.84	1.83	1.64	1.79	1.68	1.55	1.63	1.7	0.05	0.02	1.6	1.67	(c)	1.83	1.65
Gd	8.46	8.5	12.2										(c)	9.3	11.1
Tb				1.48	2.19	2.1	1.91						(c)	1.6	1.9
Dy	9.16	8.82	14											9.5	14
Ho														1.9	2.8
Er	4.82	4.59	7.85											5.4	
Tm															
Yb	4.2	3.96	7.6	4.31	7.78	7.52	6.95	4.1	0.16	0.05	3.7	3.9	(c)	4.24	7.3
Lu	0.627	0.608	1.14	0.59	1.12	1.09	0.96	0.5	0.02	0.01	0.51	0.54	(c)	0.58	1
Hf				5.79	7.59	7.21	6.98	5.4	0.16	0.65	5	5.8	(c)	5.3	6.4
Ta				1	1.26	1.19	1.18	0.9	0.02	0.11	0.75	0.88	(c)	1.1	1.3
W ppb														83	200
Re ppb															0.2
Os ppb															
Ir ppb				<6	3.5	4	4.5	0.35	0.03	0.04	0.19	0.06	(b)		7.9
Pt ppb															
Au ppb				<4	3.5	4	<6	1.01	0.08	0.02	0.244	0.34	(b)	1.5	2.6
Th ppm				0.42	0.99	1.24	1.1	0.61	0.02	0.09	0.58	0.7	(c)		
U ppm				0.13	0.4	0.26	0.23						(c)	0.15	0.37

technique (a) IDMS, (b) RNAA, (c) INAA

Table 1c. Chemical composition of Shorty Trench (cont.).

reference	bulk		spheres				Morgan 79			Krahenbuhl 80				Miller 74
	Duncan 74	74220	dark	orange	74001	74241	74001	74001	74001	74002	74002	74001	74001	74220
weight	74220													74220
SiO2 %	39.03													39.58
TiO2	8.72									7.45	7.66	7.52	7.52	10
Al2O3	6.47													6.6
FeO	22.13													21.23
MnO	0.273													0.27
MgO	14.44													15.1
CaO	7.62													9.23
Na2O	0.34													0.47
K2O	0.077													
P2O5	0.043													
S %	0.073													
sum														
Sc ppm										47.9	47	47.6	45.7	46.9
V	132													
Cr	4680													3790
Co	62									62.8	63.6	62.3	60.3	63
Ni	74.7	67	70	72	68	64	66	51	53					
Cu	26.3													
Zn	253	230	45	141	148	86	178	185	151	196	103	140	134	
Ga														
Ge ppb		250	41	191	105	155	144	179	122	193	170	170	119	
As														
Se		640	129	460	350	340	380	490	353					
Rb	1.5	0.95	0.66	0.77	0.76	2.3								
Sr	200													
Y	43.8													
Zr	186													
Nb	13.6													
Mo														
Ru														
Rh														
Pd ppb							1.1	1.3	1.7					
Ag ppb		111	320	75	72	25	82	116	75					
Cd ppb		320	92	260	25	210	59	18	9	178	35.5	45.9	11.4	
In ppb		29					10	14	6.3	35.4	19.3	10	8.3	
Sn ppb														
Sb ppb		0.65	1	25	1.16	0.55	1.25	0.73	0.77					
Te ppb		62	10	49	38	24				79.3	50.8	105	61.9	
Cs ppm		0.053	0.03	0.045	0.037	0.107								
Ba	82													
La										6.11	5.85	6	5.64	7
Ce										29	26.7	31.4	26.6	
Pr														
Nd														
Sm														
Eu														1.9
Gd														
Tb														
Dy														
Ho														
Er														
Tm														
Yb														
Lu														
Hf														
Ta														
W ppb														
Re ppb		0.052	0.014	0.055	0.213	0.296	0.014	0.016	0.024					
Os ppb							0.045	0.049	0.035					
Ir ppb		0.411	0.114	0.214	0.021	2.78	0.042	0.048	0.016	0.024	0.019			
Pt ppb														
Au ppb		0.99	0.23	1.07	0.705	1.01	0.67	1.04	0.73	1.1	0.88	0.8	1.03	
Th ppm														
U ppm		0.168	0.13	0.115	0.141	0.33	0.143	0.15	0.151	0.138	0.126	0.16	0.148	

technique (a) IDMS, (b) RNAA, (c) INAA

Table 2. Chemical composition of Individual Glass Beads.

	74221,86				74,241,143			74,241,171	
<i>reference</i>	Hughes 90								
<i>weight (a)</i>	15.5	12.6	2.8	3	3.7	16	1.8	2.3	
SiO ₂ %	39.2	39.1	38.8	39	38.7	38.3	40.4	39.1	(c)
TiO ₂	9.2	9.3	8.7	8.7	9.8	8.8	8.6	9.6	(c)
Al ₂ O ₃	5.9	5.8	5.8	5.8	6.5	5.9	7.8	6.3	(c)
FeO	22.3	22.5	22.9	22.8	23.1	22.9	21.3	22.6	(c)
MnO	0.29	0.26	0.26	0.27	0.28	0.28	0.3	0.31	(c)
MgO	14.5	14.7	14.9	15	12.2	15.1	12.2	12.8	(c)
CaO	7.4	7.2	7.4	7.3	8.3	7.6	8.4	8.1	(c)
Na ₂ O	0.44	0.47	0.44	0.46	0.5	0.17	0.52	0.49	(b)
K ₂ O	0.06	0.03	0.07	0.08	0.08	0.08	0.1	0.08	(b)
P ₂ O ₅									
S %									
<i>sum</i>									
Sc ppm	45.4	46.3	47.6	46.7	49.8	48.2	47.8	49.2	(b)
V									
Cr	4310	4379	4516	4447	4584	4516	4310	4516	(b)
Co	58	59	61	60	59	61	51	51	(b)
Ni	27	96	75	18	123	108	68	69	(b)
Cu									
Zn									
Ga									
Ge ppb									
As									
Se									
Rb									
Sr	230	280	220	220	230	190	270	140	(b)
Y									
Zr	160	170	150	190	280	150	220	210	(b)
Nb									
Mo									
Ru									
Rh									
Pd ppb									
Ag ppb									
Cd ppb									
In ppb									
Sn ppb									
Sb ppb									
Te ppb									
Cs ppm	0.04	0.05	0.15	0.19		0.06	0.05	0.14	(b)
Ba	120	59	161	31	80	129	79	124	(b)
La	5.3	5.6	5.7	6.2	5.2	6.6	7.9	6.3	(b)
Ce	16.7	15.2	16.2	18.4	18.6	18.7	21.2	18.4	(b)
Pr									
Nd	14.9	16.8	17.5	15.4	21.7	19.5	17.2	19.5	(b)
Sm	6.9	6.7	6.9	6.8	7.4	6.8	7.5	7.8	(b)
Eu	1.72	1.74	1.83	2.04	2.14	1.91	1.81	2.18	(b)
Gd									
Tb	1.42	1.49	1.42	1.65	2.02	1.77	1.5	1.89	(b)
Dy									
Ho									
Er									
Tm									
Yb	3.5	3.4	3.6	3.6	4.1	3.7	4.4	4.4	(b)
Lu	0.39	0.48	0.5	0.47	0.49	0.54	0.46	0.6	(b)
Hf	5.5	5.9	5.8	5.5	6.5	5.8	6.3	6.5	(b)
Ta	0.96	1.1	1.2		1.3	1.2	1.3	1.3	(b)
W ppb									
Re ppb									
Os ppb									
Ir ppb									
Pt ppb									
Au ppb									
Th ppm	0.3	0.3	0.35	0.04	0.48	0.22	0.65	0.77	(b)
U ppm	0.12		0.22	0.22	0.34	0.28	0.12		(b)
<i>technique</i>	(a) micrograms, (b) INAA, (c) elec. Probe								

Table 3: Highly Siderophile Elements in 74220 and 74001.

	74220		74220		74001		74001		74001		74001		
	44 - 74 micron etchate	74 - 150 micron residue	44 - 80 micron etchate	80 - 200 micron residue	44 - 80 micron etchate	80 - 200 micron residue	44 - 80 micron etchate	80 - 200 micron residue	> 200 micron etchate	> 200 micron residue	> 80 micron leachate	> 80 micron residue	
Ru	-	-	-	-	0.26	0.17	0.51	0.017	0.04	-	-	0.241	(a)
Pd	-	1.528	-	0.127	0.97	0.79	0.328	0.037	0.825	0.044	0.064	0.253	(a)
Re	0.0106	0.067	0.0264	0.002	0.013	0.023	0.046	0.003	0.0058	0.0008	0.0025	0.0372	(c)
Os	0.158	0.0245	0.189	0.009	0.116	0.167	0.0074	0.0068	0.0363	0.0026	0.0067	0.352	(b)
Ir	-	-	-	0.015	0.17	0.134	0.0046	0.0096	-	0.024	0.0058	0.205	(a)
Pt	-	0.265	-	0.346	0.83	0.712	0.706	0.0028	2.75	0.016	0.05	0.62	(a)

ppb by (a) ICP-MS, (b) IDMS neg. (c) calculated from Os isotope (Walker et al. 2004)

	74220	74241	74001
Ru	<1	3	<1
Os	0.7	0.8	20

ppb by Jovanovic and Reed 1974

	74220		74220 size fractions (microns)		
	500 - 62 microns l + e	62 residue	500 to 62	62 to 20	20 to 0.1
Au	0.86	0.274	0.34	0.605	1.7
Ir	0.65	0.21	0.06	0.28	0.38

ppb by RNAA (Wasson et al. 1976)

Table 4: Comic ray induced activity Orange Soil.

	ref:	depth (cm)	26Al dpm/kg	22Na	54Mn	56Co	46Sc	48V
74220	Kieth 74	~ 6.5	45	51	50	31	19.1	13
74002	Fruchter 78	0.3	78	125				
		0.75	85	142				
		1.25	75	135				
		1.75	71	110				
		2.75	54	103				
74001		7	48	74				
		37	33	38				
		57	33	29				

Table 5. Microprobe analysis of Orange Glass (groups).

	74220	74220	74240	74220		74001	74220	74220	74220	A 17		
reference	Delano 81	Reid 73	Reid 73	Prinz 73	Carter 73	Glass 73	Roedder 73	Heiken 74	Mao 73	Philpotts 73	Warner 79	
# beads	140	47	80			19		inc. black		red	black	47
SiO2 %	38.5	38.55	38.63	39.2	38	39.4	39.5	38.73	38.88	38	40.1	39.2
TiO2	9.12	8.87	8.96	9.4	8.87	9.3	8.56	9.46	8.7	9.6	9.9	8.9
Al2O3	5.79	5.85	5.87	5.8	5.51	6.02	6.41	5.98	5.76	5.4	6.3	5.9
FeO	22.9	21.96	22	22.4	22.4	22.7	22.2	22.6	22.21	23.4	23.8	22.4
MnO						0.3	0.32		0.24			0.28
MgO	14.9	14.99	14.79	14.1	14.5	15.5	14.4	14.2	15.81	17.3	15.1	14.6
CaO	7.4	7.16	7.31	7.6	6.99	6.42	7.13	7.73	7.17	6	7	7.2
Na2O	0.38	0.33	0.37	0.31	0.39	0.69	0.51	0.35	0.42	0.4	0.38	0.36
K2O			0.08	0.04	0.06		0.08	0.07	0.06			0.09
P2O5				0.04			0.05					0.04
S %												
sum												
Sc ppm												
V												
Cr	4721	3762	3762	4174	4789		3558	4037	5063			4584

Table 6: Halogens and sulfur in Orange Soil.

	Jovanovic 74				Wanke 73		Thode 76		Gibson 74		Gibson 78		
	74220	74220	74241	74001	74220	74241	74220	74241	74220	74220	74260	74001 - 2	74220
F ppm	102	61	230	<2	(a) 69	210	(b)						
Cl ppm	72	103	59	40	20								
Br ppb	1580	420	800	180									
I ppb	14	13	13	6									
S ppm							420	940	560	750	1080	548	820

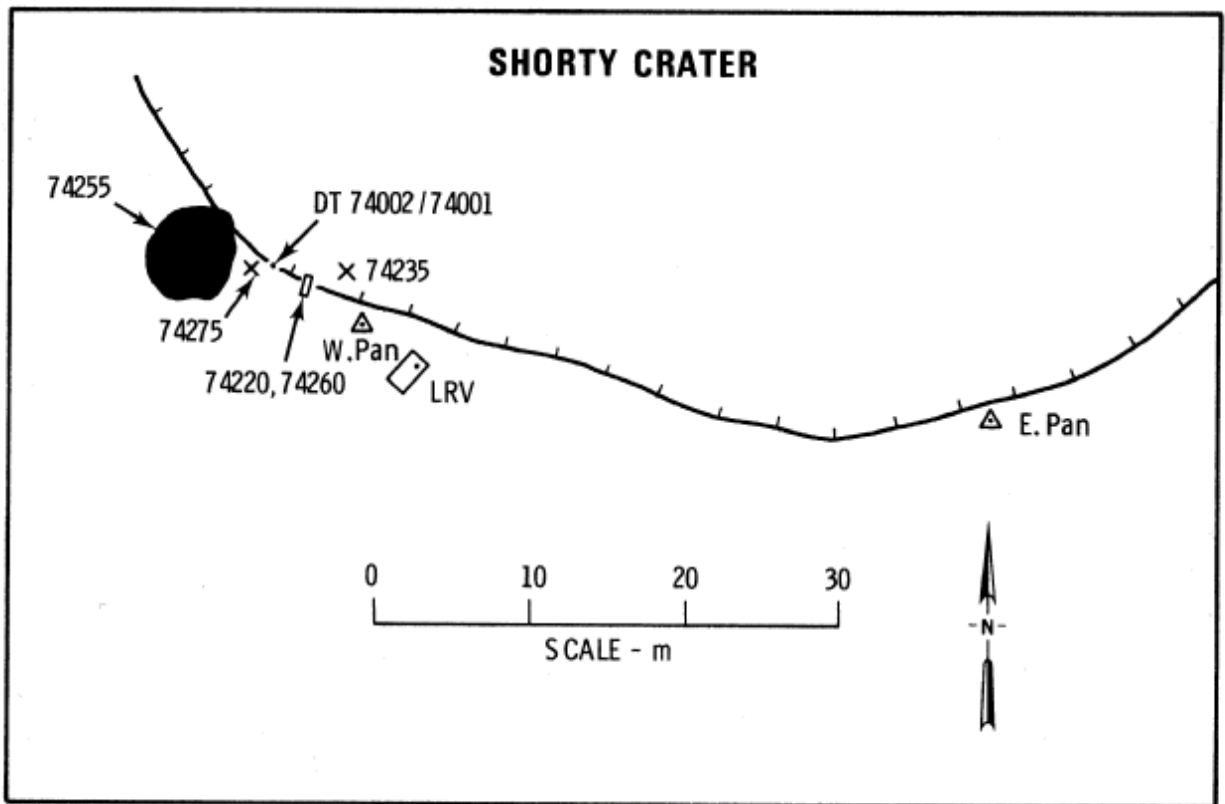


Figure 21: Map of Shorty Crater showing locations of samples. Figure 1 was taken from the position marked W. Pan.

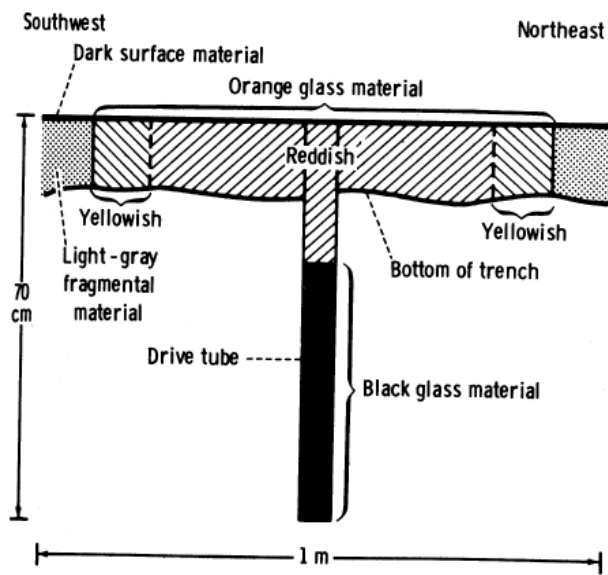


Figure 22: Sketch of trench and core tube on rim of Shorty Crater (from Muehlberger et al. 1973). The orange soil (74220) and the core (74002/1) were taken from the middle of the trench and the grey soils (74240 and 74260) from either end. The core was from just behind the trench.

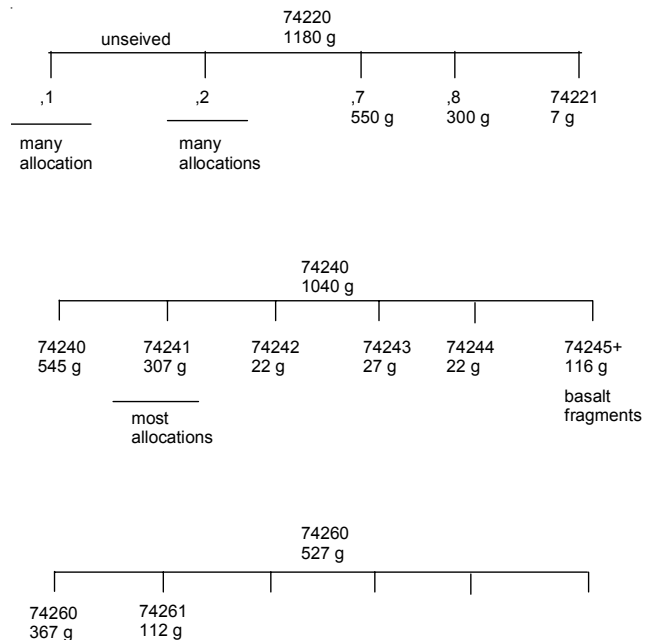


Figure 23: Top-level flow diagram of sample weights and allocations.

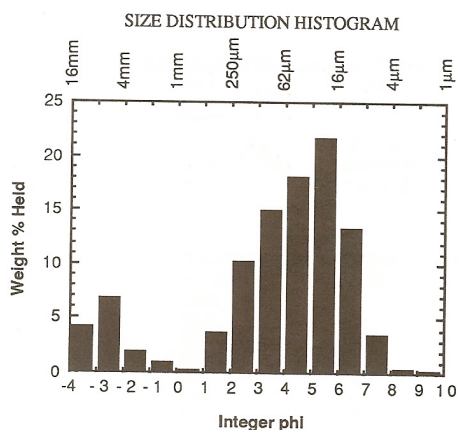
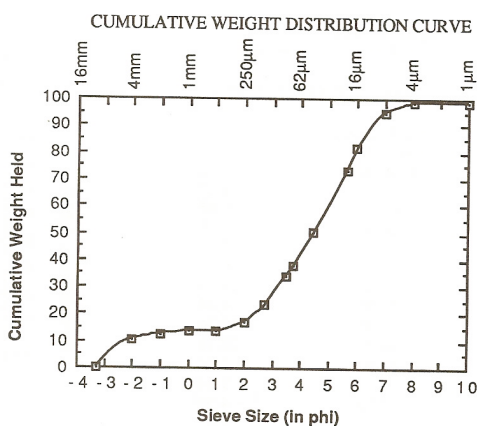


Figure 24: Grain size distribution of 74220 as depicted by graf 1993, based on data by McKay's group (see also 74240 for comparisons).

References for 74220 (orange soil).

Alexander E.C., Coscio M.R., Dragon J.C. and Saito K. (1978) ^{40}Ar - ^{39}Ar studies of glasses from lunar soils (abs). *Lunar Planet. Sci.* **IX**, 7-9.

Apollo 17 PET (1973) The Apollo 17 samples – petrographic and chemical description. *Science* **182**, 659-672.

Arndt J. and Engelhardt W. von (1987) Formation of Apollo 17 orange and black glass beads. *Proc. 17th Lunar Planet. Sci. Conf.*, JGR **92**, E372-E376.

Bell P.M., El Goresy A. and Mao H.K. (1974) A study of iron-rich particles on the surfaces of orange glass spheres from 74220. *Proc. 5th Lunar Sci. Conf.*, 187-191.

Blanchard D.P. and Budahn J.R. (1978) Chemistry of orange/black soils from core 74001/2. *Proc. 9th Lunar Planet. Sci. Conf.*, 1969-1980.

Bogard D.D. and Hirsch W.C. (1978) Depositional and irradiational history and noble gas contents of orange-black

droplets in the 74002/1 core from Shorty Crater. *Proc. 9th Lunar Sci. Conf.*, 1981-2000.

Brecher A. and Morash K.R. (1973) Magnetic characteristics of Apollo 17 orange and grey soils. *EOS Trans. AGU* **54**, 581-582.

Brecher A., Menke W.H. and Morash K.R. (1974) Comparative magnetic studies of some Apollo 17 rocks and soils and their implications. *Proc. 5th Lunar Sci. Conf.*, 2795-2814.

Brown G.M., Holland J.G. and Peckett A. (1973) Orange soil from the moon. *Nature* **242**, 515.

Butler P. (1973) Lunar Sample Information Catalog Apollo 17. Lunar Receiving Laboratory. MSC 03211 Curator's Catalog. pp. 447.

Butler P. (1978) Recognition of lunar glass droplets produced directly from endogenous liquids: The evidence from S-Zn coatings. *Proc. 9th Lunar Planet. Sci. Conf.*, 1459-1471.

Butler P. and Meyer C. (1976) Sulfur prevails in coatings on glass droplets: Apollo 15 green and brown glasses and Apollo 17 orange and black (devitrified) glasses. *Proc. 7th Lunar Sci. Conf.*, 1561-1581.

Cadenhead D.A. and Stetter J.R. (1974) The interaction of water vapor with a lunar soil, a compacted soil and a cinder-like rock fragment. *Proc. 5th Lunar Sci. Conf.*, 2301-2316.

Cadenhead D.A. and Buerget W.G. (1974) The interaction of hydrogen with Taurus-Littrow orange soil. *Proc. 5th Lunar Sci. Conf.*, 2287-2300.

Carter J.L., Taylor H.C. and Padovani E. (1973) Morphology and chemistry of particles from Apollo 17 soils 74220, 74241 and 75081. *EOS Trans. AGU* **54**, 582.

Chang S., Lennon K. and Gibson E.K. (1974) Abundances of C, N, H, He and S in Apollo 17 soils. *Proc. 5th Lunar Sci. Conf.* 1785-1800.

Cirlin E.H. and Housley R.M. (1977) A flameless atomic absorption study of the volatile trace metal lead in lunar samples. *Proc. 8th Lunar Sci. Conf.*, 3931-3940.

Cirlin E.H. and Housley R.M. (1979) Scanning Auger microprobe and atomic absorption studies of lunar volcanic volatiles. *Proc. 10th Lunar Planet. Sci. Conf.*, 341-354.

Cirlin E.H., Housley R.M. and Grant R.W. (1978) Studies of volatiles in Apollo 17 samples and their implication to vapor transport processes. *Proc. 9th Lunar Planet. Sci. Conf.*, 2049-2063.

- Clanton U.S., McKay D.S., Waits G. and Fuhrman R. (1978) Sublimate morphology on 74001 and 74002 orange and black glassy droplets. *Proc. 9th Lunar Planet. Sci. Conf.*, 1945-1957.
- Crozaz (1978) Regolith depositional history at Shorty Crater. *Proc. 9th Lunar Planet. Sci. Conf.*, 2001-2009.
- Crozaz (1979) Regolith reworking at Shorty Crater. *Proc. 10th Lunar Planet. Sci. Conf.*, 1381-1384.
- Delano J.W. and Livi K. (1981) Lunar volcanic glasses and their constraints on mare petrogenesis. *Geochim. Cosmochim. Acta* 45, 2137-2149.
- Delano J.W. and Lindsey D.H. (1983) Mare glasses from Apollo 17: Constraints on the moon's bulk composition. *Proc. 14th Lunar Planet. Sci. Conf.*, JGR 88, B3-B16.
- Delano J.W. (1986) Pristine lunar glasses: Criteria, data and implications. *Proc. 16th Lunar Planet. Sci. Conf.*, JGR 91, D201-D213.
- Duncan A.R., Erlank A.J., Willis J.P. and Sher M.K. (1974) Compositional characteristics of the Apollo 17 regolith (abs). *Lunar Sci.* V, 184-186.
- Epstein S. and Taylor H.P. (1973) O^{18}/O^{16} , Si^{30}/Si^{28} , C^{13}/C^{12} , D/H and hydrogen and carbon concentration data on Apollo 17 soils. *EOS Trans. AGU* 54, 585-586.
- Eberhardt P., Eugster O., Geiss J., Grogler N., Jungck M., Mauer P., Morgeli M. and Stettler A. (1975) Shorty Crater, noble gasses, and chronology (abs). *Meteoritics* 10, 93-94.
- Eugster O., Eberhardt P., Geiss J., Grogler N., Jungck M. and Morgeli M. (1977) The cosmic ray exposure history of Shorty Crater samples; the age of Shorty Crater. *Proc. 8th Lunar Sci. Conf.*, 3059-3082.
- Eugster O., Grogler N., Eberhardt P. and Geiss J. (1979) Double drive tube 74001/2: History of the black and orange glass; Determination of a pre-exposure 3.7 AE ago by $^{136}Xe/^{235}U$ dating. *Proc. 10th Lunar Planet. Sci. Conf.*, 1351-1379.
- Eugster O., Grogler N., Eberhardt P. and Geiss J. (1980) Double drive tube 74001/2: Composition of noble gases trapped 3.7 AE ago. *Proc. 11th Lunar Planet. Sci. Conf.*, 1565-1592.
- Eugster O., Grogler N., Eberhardt P., Geiss J. and Kiesel W. (1981) Double drive tube 74001/2: A two-stage exposure model based on noble gases, chemical abundances and predicted production rates. *Proc. 12th Lunar Planet. Sci. Conf.*, 541-558.
- Eugster O., Eberhardt P., Geiss J. and Grogler N. (1983) Neutron induced fission of uranium: a dating method for lunar surface material. *Science* 219, 170-172.
- Fireman E.L., D'Amico J. and DeFelice J. (1973) Radioactivities vs. depth in Apollo 16 and 17 soil. *Proc. 4th Lunar Sci. Conf.* 2131-2144.
- Fleischer R.L. and Hart H.R. (1974) Uniformity of the uranium content of lunar green and orange glasses. *Proc. 5th Lunar Sci. Conf.*, 2251-2255.
- Fruchter J.S., Rancitelli L.A., Evans J.C. and Perkins R.W. (1978) Lunar surface processes and cosmic ray histories over the past several million years. *Proc. 9th Lunar Planet. Sci. Conf.*, 2019-2032.
- Fruland R.M., Morris R.V., McKay D.S. and Clanton U.S. (1977) Apollo 17 ropy glasses. *Proc. 8th Lunar Sci. Conf.*, 3095-3111.
- Garg A.N. and Ehmman W.N. (1976a) Zr-Hf fractionation in chemically defined lunar rock groups. *Proc. 7th Lunar Sci. Conf.* 3397-3410.
- Gibson E.K. and Moore G. (1973a) Carbon, sulfur and inorganic gases abundances and distribution from soils collected at Shorty Crater on Apollo 17. *EOS Trans. AGU* 54, 589-590.
- Gibson E.K. and Moore G. (1973b) Variable carbon contents of lunar soil 74220. *Earth Planet Sci. Lett.* 20, 404-408.
- Gibson E.K. and Moore G. (1974) Sulfur abundances and distributions in the valley of Taurus-Littrow. *Proc. 5th Lunar Sci. Conf.*, 1823-1837.
- Gibson E.K. and Andrawes F.F. (1978a) Nature of the gases released from lunar rocks and soils upon crushing. *Proc. 9th Lunar Planet. Sci. Conf.* 2433-2450.
- Glass B.P. (1976) Major element compositions of glasses from Apollo 11, 16 and 17 soil samples. *Proc. 7th Lunar Sci. Conf.*, 679-693.
- Goldberg R.H., Trombrello T.A. and Burnett D.S. (1976) Flourine as a constituent in lunar magmatic gases. *Proc. 7th Lunar Sci. Conf.*, 1597-1613.
- Graf J.C. (1993) Lunar Soils Grain Size Catalog. NASA Pub. 1265
- Grant R.W., Housley R.M., Szalkowski F.J. and Marcus H.L. (1974) Auger electron spectroscopy of lunar samples. *Proc. 5th Lunar Sci. Conf.*, 2423-2439.

- Green G.M., King D.T., Banholzer G.S. and King E.A. (1975) Size and modal analysis of fines and ultrafines from some Apollo 17 samples. *Proc. 6th Lunar Sci. Conf.* 517-527.
- Green D.H., Ringwood A.E., Hibberson W.O. and Ware N.G. (1975) Experimental petrology of Apollo 17 mare basalts. *Proc. 6th Lunar Sci. Conf.*, 871-893.
- Haggerty S.E. (1974) Apollo 17 orange glass: Textural and morphological characteristics of devitrification. *Proc. 5th Lunar Sci. Conf.*, 193-205.
- Heiken G.H., McKay D.S. and Brown R.W. (1974) Lunar deposits of possible pyroclastic origin. *Geochim. Cosmochim. Acta* **38**, 1703-1718.
- Heiken G.H. and McKay D.S. (1974) Petrology of Apollo 17 soils. *Proc. 5th Lunar Sci. Conf.*, 843-860.
- Heiken G.H. and McKay D.S. (1977) A model for the eruption behavior of a volcanic vent in eastern Mare Serenitatis. *Proc. 8th Lunar Planet. Sci. Conf.*, 3243-3255.
- Heiken G.H. and McKay D.S. (1978) Petrology of a sequence of pyroclastic rocks from the valley of Taurus-Littrow (Apollo 17 landing site). *Proc. 9th Lunar Planet. Sci. Conf.*, 1933-1943.
- Herzog G.F., Moynier F., Albarede F. and Brezhnev A.A. (2009) Isotopic and elemental abundances of copper and zinc in lunar samples - - . *Geochim. Cosmochim. Acta* **73**, 5884-5904.
- Hintenberger H., Weber H.W. and Schultz L. (1974) Solar, spallogenic and radiogenic rare gases in Apollo 17 soils and breccias. *Proc. 5th Lunar Sci. Conf.*, 2005-2022.
- Holmes H.F., Fuller E.L. and Gammage R.B. (1974) Some surface properties of Apollo 17 soils. *Proc. 5th Lunar Sci. Conf.*, 2275-2285.
- Hughes S.S., Delano J.W. and Schmitt R.A. (1990) Chemistries of individual mare volcanic glasses: Evidence for distinct regions of hybridized mantle and a KREEP component in Apollo 14 magmatic sources. *Proc. 20th Lunar Planet. Sci. Conf.*, 127-138.
- Huneke J.C., Jessberger E.K., Podosek F.A. and Wasserburg G.J. (1973) ⁴⁰Ar/³⁹Ar measurements in Apollo 16 and 17 samples and the chronology of metamorphic and volcanic activity in the Taurus-Littrow region. *Proc. 4th Lunar Sci. Conf.*, 1725-1756.
- Huneke J.C. (1978) ⁴⁰Ar-³⁹Ar microanalysis of single 74220 glass balls and 72435 breccia clasts. *Proc. 9th Lunar Planet. Sci. Conf.*, 2345-2362.
- Husain L and Schaeffer O.A. (1973) Lunar Volcanism: Age of the glass in the Apollo 17 orange soil. *Science* **180**, 1358-1360.
- Hutcheon J.D., MacDougall D. and Stevenson J. (1974) Apollo 17 particle track studies: Surface residence times and fission track ages for orange glass and large boulders. *Proc. 5th Lunar Sci. Conf.*, 2597-2608.
- Jovanovic S., Jensen K. and Reed G.W. (1973) The halogens, U, Li, Te and P₂O₅ in five Apollo 17 soil samples. *EOS Trans. AGU* **54**, 595-596.
- Jovanovic S. and Reed G.W. (1974) Labile and nonlabile element relationships among Apollo 17 samples. *Proc. 5th Lunar Sci. Conf.*, 1685-1701.
- Keith J.E., Clark R.S. and Bennett L.J. (1974) Determination of natural and cosmic ray induced radionuclides in Apollo 17 lunar samples. *Proc. 5th Lunar Sci. Conf.*, 2121-2138.
- Kirsten T., Horn P., Heymann D., Hubner W. and Storzer D. (1973) Apollo 17 crystalline rocks and soils: Rare gasses, ion track and ages. *EOS Trans. AGU* **54**, 595-596.
- Korotev R.L. (1976) Geochemistry of grain-size fractions of soils from the Taurus-Littrow valley floor. *Proc. 7th Lunar Planet. Sci. Conf.*, 695-726.
- Korotev R.L. and Kremser D. (1992) Compositional variations in Apollo 17 soils and their relationships to the geology of the Taurus-Littrow site. *Proc. 22nd Lunar Planet. Sci. Conf.*, 275-301.
- Krahenbuhl U. (1980) Distribution of volatile and non volatile elements in grain-size fractions of Apollo 17 drive tube 74001/2. *Proc. 11th Lunar Planet. Sci. Conf.*, 1551-1564.
- Lee D-C., Halliday A.N., Snyder G.A. and Taylor L.A. (1997) Age and origin of the Moon. *Science* **278**, 1098-1103.
- Mao H.K., Virgo D. and Bell P.M. (1973a) Sample 74220: Analysis of the Apollo 17 orange soil from Shorty Crater. *EOS Trans. AGU* **54**, 598.
- Mao H.K., Virgo D. and Bell P.M. (1973b) Analytical and experimental study of iron and titanium in orange glass from Apollo 17 soil sample 74220. *Proc. 4th Lunar Sci. Conf.*, 397-412.
- Masuda A., Tanaka T., Nakamura N. and Kurasawa H. (1974) Possible REE anomalies in Apollo 17 REE patterns. *Proc. 5th Lunar Sci. Conf.*, 1247-1253.
- McKay D.S., Heiken G.H. and Waits G. (1978) Core 74001/2: Grain size and petrology as a key to the rate of in-situ

- reworking and lateral transport on the lunar surface. *Proc. 9th Lunar Planet. Sci. Conf.*, 1913-1932.
- McKay D.S. and Heiken G.H. (1973) Petrology and scanning electron microscope study of Apollo 17 orange and black glass. *EOS Trans. AGU* **54**, 599-600.
- Meyer C., McKay D.S., Anderson D.H. and Butler P. (1975) The source of sublimates on the Apollo 15 green and Apollo 17 orange glass samples. *Proc. 6th Lunar Sci. Conf.*, 1673-1699.
- Miller M.D., Pacer R.A., Ma M-S., Hawke B.R., Lookhart G.L. and Ehmann W.D. (1974) Compositional studies of the lunar regolith at the Apollo 17 site. *Proc. 5th Lunar Sci. Conf.*, 1079-1086.
- Morgan J.W., Ganapathy R., Higuchi H., Krahenbuhl U. and Anders E. (1974) Lunar basins: Tentative characterization of projectiles from meteoritic elements in Apollo 17 boulders (abs). *Lunar Sci.* **V**, 526-528.
- Morgan J.W. and Wandless G.A. (1979) 74001 drive tube: Siderophile elements match IIB iron meteorite pattern. *Proc. 10th Lunar Planet. Sci. Conf.*, 327-340.
- Morris R.V. (1976) Surface exposure indices of lunar soils: A comparative FMR study. *Proc. 7th Lunar Sci. Conf.* 315-335.
- Morris R.V., Score R., Dardano C. and Heiken G. (1983) Handbook of Lunar Soils. Part II. Publication 67, JSC 19069
- Morris R.V. and Gose W.A. (1977) Depositional history of core section 74001: Depth profiles of maturity, FeO and metal. *Proc. 8th Lunar Sci. Conf.*, 3113-3122.
- Morris R.V. (1978) The surface exposure (maturity) of lunar soils: Some concepts and Is/FeO compilation. *Proc. 9th Lunar Planet. Sci.*, 2287-2297.
- Morris R.V., Gose W.A. and Lauer H.V. (1978) Depositional and surface history of the Shorty Crater core 74001/2: FMR and magnetic studies. *Proc. 9th Lunar Planet. Sci.*, 2033-2048.
- Morris R.V. (1980) Origins and size distribution of metallic iron particles in the lunar regolith. *Proc. 11th Lunar Planet. Sci. Conf.* 1697-1712.
- Muehlberger W.R. and 20 authors (1973) Preliminary geologic investigation of the Apollo 17 landing site. Chapter 6, NASA SP-330.
- Murrell M.T., Nishiizumi K. and Arnold J.R. (1979) ⁵³Mn profile 74001/2: Comments on the recent history of the core (abs). *Lunar Planet. Sci.* **X**, 881-883.
- Nagel J.S. (1978) Drive tubes 74002/74001: Dissection and description. Lunar Core Catalog. NASA Johnson Space Center, Houston.
- Nava D.F. (1974) Chemical compositions of some soils and rock types from the Apollo 15, 16 and 17 lunar sites. *Proc. 5th Lunar Sci. Conf.*, 1087-1096.
- Nunes P.D., Tatsumoto M. and Unruh D.M. (1974) U-Th-Pb systematics of some Apollo 17 lunar samples and implications for a lunar basin excavation chronology. *Proc. 5th Lunar Sci. Conf.*, 1487-1514.
- Olhoeft G.R. and Strangway D.W. (1973) Electrical and magnetic properties of Apollo 17 soils. *EOS Trans. AGU* **54**, 601.
- Papike J.J., Simon S.B. and Laul J.C. (1982) The lunar regolith: Chemistry, Mineralogy and Petrology. *Rev. Geophys. Space Phys.* **20**, 761-826.
- Philpotts J.A., Schuhmann S., Schnetzler C.C., Kouns C.W., Doan A.S., Wood F.M., Bickel A.L. and Staab R.K.L. (1973) Apollo 17: Geochemical aspects of some soils, basalts and breccia. *EOS Trans. AGU* **54**, 603-604.
- Philpotts J.A., Schuhmann S., Kouns C.W., Lum R.K.L. and Winzer S. (1974) Origin of Apollo 17 rocks and soils. *Proc. 5th Lunar Sci. Conf.*, 1255-1267.
- Pieters C.M., Hawke B.R., Butler P., Waltz S., and Nagle S. (1980) Multispectral imaging of the lunar regolith core samples: Preliminary results for 74002. *Proc. 11th Lunar Planet. Sci. Conf.*, 1593-1608.
- Prinz M., Dowty E. and Keil K. (1973) A model for the formation of orange and green glass and the filling of mare basins. *EOS Trans. AGU* **54**, 605.
- Reed G.W., Allen R.O. and Jovanovic S. (1977) Volatile metal deposits on lunar soils – relation to volcanism. *Proc. 8th Lunar Sci. Conf.*, 3917-3930.
- Reid A.M., Lofgren G.E., Heiken G.H., Brown R.W. and Moreland G. (1973a) Apollo 17 orange glass, Apollo 15 green glass and Hawaiian lava fountain glass. *EOS Trans. AGU* **54**, 606-607.
- Reid A.M., Ridley W.I., Donaldson C. and Brown R.W. (1973b) Glass compositions in the orange and gray soils from Shorty Crater, Apollo 17. *EOS Trans. AGU* **54**, 607-608.
- Rhodes J.M. (1973) Major and trace element chemistry of Apollo 17 samples. *EOS Trans. AGU* **54**, 609-610.

- Rhodes J.M., Rodgers K.V., Shih C-Y., Bansal B.M., Nyquist L.E., Wiesmann H. and Hubbard N.J. (1974) The relationships between geology and soil chemistry at the Apollo 17 landing site. *Proc. 5th Lunar Sci. Conf.*, 1097-1117.
- Roedder E. and Weiblen P.W. (1973) Origin of orange glass spherules in Apollo 17 sample 74220. *EOS Trans. AGU* **54**, 612-613.
- Roedder E. and Weiblen P.W. (1973) Apollo 17 "orange glass" and meteoritic impact on liquid lava. *Nature* **244**, 210-212.
- Rose H.J., Cuttita F., Berman S., Brown F.W., Carron M.K., Christian R.P., Dwornik E.J. and Greenland L.P. (1974) Chemical composition of rocks and soils at Taurus-Littrow. *Proc. 5th Lunar Sci. Conf.*, 1119-1133.
- Saito K. and Alexander E.C. (1979) ⁴⁰Ar-³⁹Ar studies of lunar soil 74001 (abs). *Lunar Sci.* **X**, 1049.
- Sato M. (1979) The driving mechanism of lunar pyroclastic eruptions inferred from the oxygen fugacity behavior of Apollo 17 orange glass. *Proc. 10th Lunar Planet. Sci. Conf.*, 311-325.
- Schaeffer O.A. and Husain L. (1973) Isotopic ages of Apollo 17 lunar material. *EOS Trans. AGU* **54**, 614.
- Shih C-Y., Nyquist L.E., Reese Y., Wiesmann H. and Schwandt C. (2001) Rb-Sr and Sm-Nd isotopic constraints on the genesis of lunar green and orange glasses (abs#1401). *Lunar Planet. Sci.* **XXXII**,
- Silver L.T. (1974) Implications of volatile leads in orange, grey, and green lunar soils for an Earth-like Moon (abs). *EOS Trans. AGU* **55**, 681.
- Silver L.T. (1974) Patterns for U, Th, Pb distributions and isotopic relationships in Apollo 17 soils (abs). *Lunar Sci.* **V**, 706-708.
- Stone C.D., Taylor L.A., McKay D.S. and Morris R.V. (1982) Ferromagnetic resonance intensity: A rapid method for determining lunar glass bead origin. *Proc. 13th Lunar Planet. Sci. Conf.*, JGR **87**, A182-A196.
- Tatsumoto M., Nunes P.D., Knight R.J., Hedge C.E. and Unruh D.M. (1973) U-Th-Pb, Rb-Sr, and K measurements of two Apollo 17 samples. *EOS Trans. AGU* **54**, 614-615.
- Tatsumoto M., Premo W. and Unruh D.M. (1987) Origin of lead from green glass of Apollo 15426: A search for primitive lunar lead. *Proc. 17th Lunar Planet. Sci. Conf.*, JGR **92**, E361-E371.
- Tanaka T., Kurasawa H., Nakamura N. and Masuda A. (1973) Rare earth elements in fines 74220. *EOS Trans. AGU* **54**, 614.
- Taylor H.P. and Epstein S. (1975) O¹⁸/O¹⁶ and Si³⁰/Si²⁸ studies of some Apollo 15, 16 and 17 samples. *Proc. 4th Lunar Sci. Conf.*, 1657-1679.
- Taylor J.H.C. and Carter J.L. (1974) Apollo 17: Comparative chemistry of olivines, pyroxenes, and plagioclase from regolith samples, 74002, 74241 and 75081. *Proc. 5th Lunar Sci. Conf.* 925-933.
- Taylor L.A., Williams K.L. and Sardi O. (1973b) Selected Apollo 17 soils: Mineralogy and geochemistry of opaque and non-opaque phases. *Earth Planet. Sci. Lett.* **21**, 6-12.
- Tera F. and Wasserburg G.J. (1976) Lunar ball games and other sports (abs). *Lunar Sci.* **VII**, 858-860.
- Thode H.G. and Rees C.E. (1976) Sulfur isotopes in grain size fractions of lunar soils. *Proc. 7th Lunar Sci. Conf.*, 459-468.
- Uhlmann D.R., Cukierman M., Scherer G. and Hopper R.W. (1973) Viscous flow, crystallization behavior and thermal history of orange soil material. *EOS Trans. AGU* **54**, 617-618.
- Vaughan D.J. and Burns R.G. (1973) Low oxidation states of Fe and Ti in the Apollo 17 orange soil. *EOS Trans. AGU* **54**, 618-619.
- Walker R.J., Horan M.F., Schearer C.K. and Papike J.J. (2004) Low abundance of highly siderophile elements in the lunar mantle: evidence for prolonged late accretion. *Earth Planet. Sci. Lett.* **224**, 399-413.
- Wanke H., Baddenhausen H., Dreibus G., Jagoutz E., Kruse H., Palme H., Spettel B. and Teschke F. (1973) Multielement analysis of Apollo 15, 16 and 17 samples and the bulk composition of the moon. *Proc. 4th Lunar Sci. Conf.*, 1461-1481.
- Warner R.D., Taylor G.J. and Keil K. (1979) Composition of glasses in Apollo 17 samples and their relation to known lunar rock types. *Proc. 10th Lunar Planet. Sci. Conf.*, 1437-1456.
- Wasson J.T., Boynton W.V., Kallemeyn G.W., Sundberg L.L. and Wai C.M. (1976) Volatile compounds released during lunar lava fountaining. *Proc. 7th Lunar Sci. Conf.*, 1583-1595.
- Wiesmann H. and Hubbard N.J. (1975) A compilation of the sample data generated by the Gast, Nyquist and Hubbard PI-ships. Unpublished JSC document.

Wolf E.W., Bailey N.C., Lucchitta B.K., Muehlberger W.R.,
Scott D.H., Sutton R.L. and Wilshire H.G. (1981) The
geologic investigation of the Taurus-Littrow valley: Apollo
17 landing site. USGS Prof. Paper 1080.