



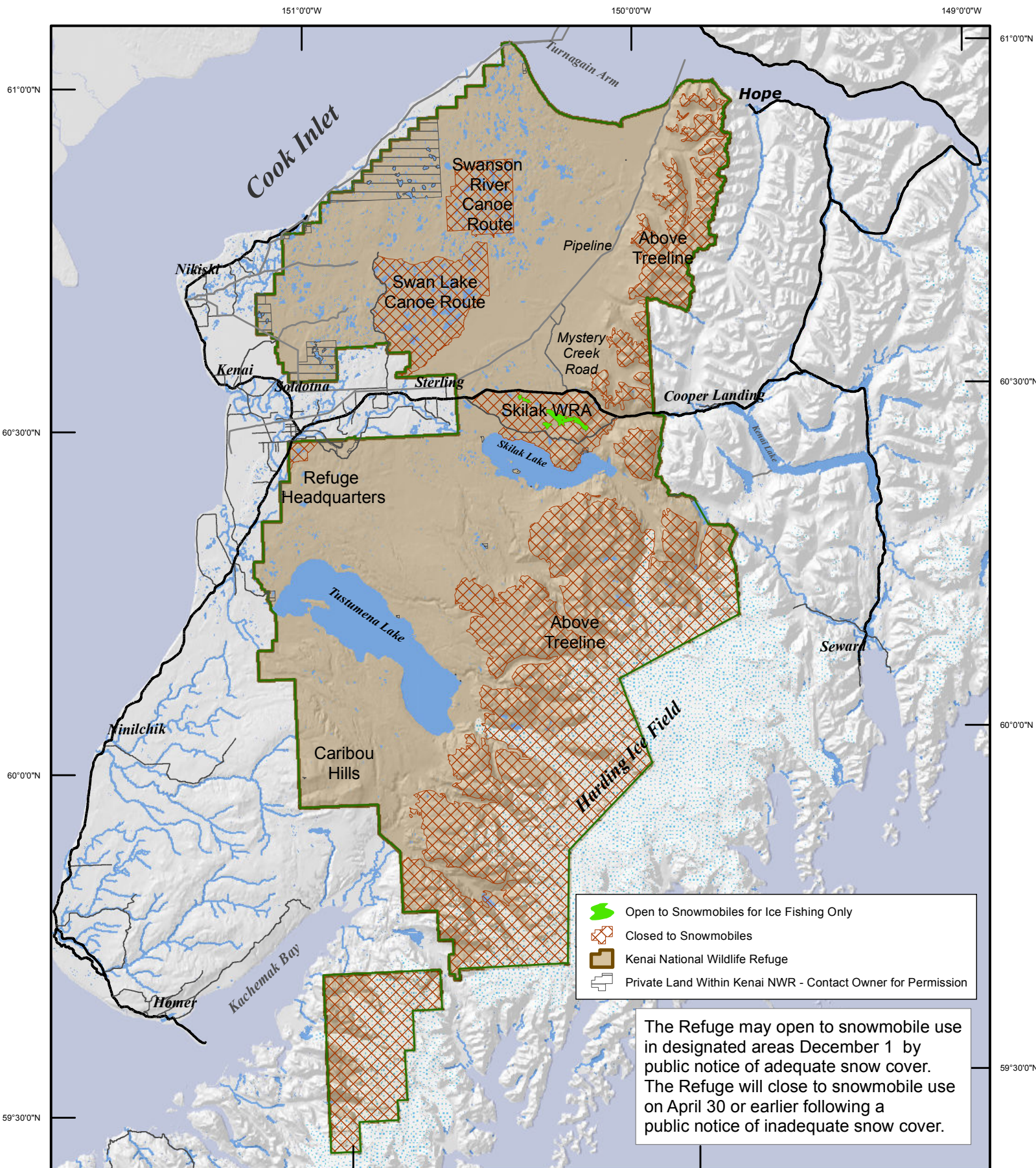
U.S. Fish & Wildlife Service





# Kenai National Wildlife Refuge

Soldotna, Alaska

# Snowmobile Operation

map for illustrative purposes only - see specific regulations 50CFR36.39



-  Open to Snowmobiles for Ice Fishing Only
-  Closed to Snowmobiles
-  Kenai National Wildlife Refuge
-  Private Land Within Kenai NWR - Contact Owner for Permission

The Refuge may open to snowmobile use in designated areas December 1 by public notice of adequate snow cover. The Refuge will close to snowmobile use on April 30 or earlier following a public notice of inadequate snow cover.

Current to: 12/18/2013

I:\IM\_Products\Regulations\map\_CFR50\_Snowmobiles\_KENWR\_2013.pdf

