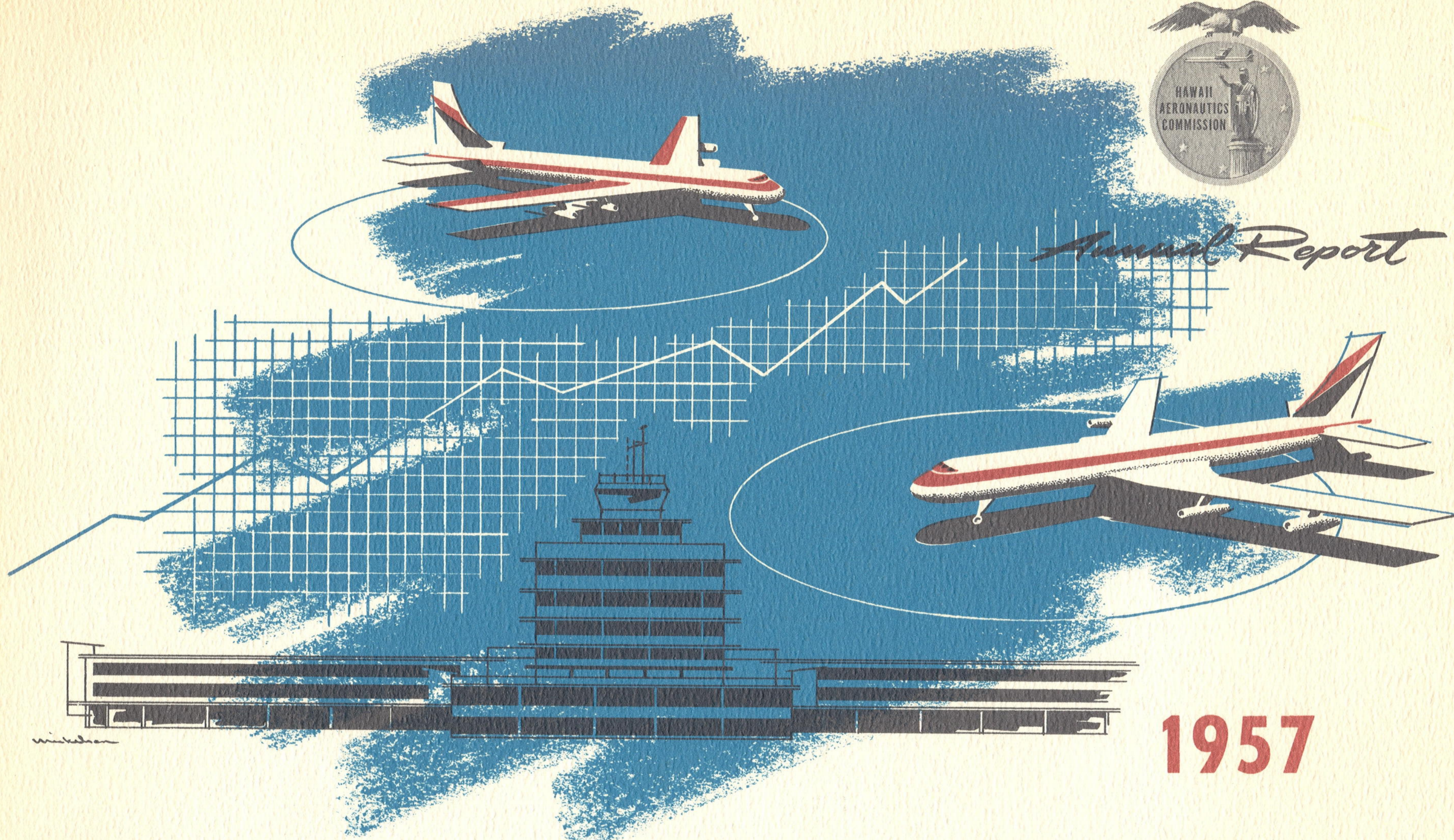




*Annual Report*



**1957**

H A W A I I A E R O N A U T I C S C O M M I S S I O N

*10th Anniversary Report*



# Annual Report

## Commissioners

Francis K. Sylva..... Chairman-Oahu  
Dorsey W. Edwards..... Vice Chairman-Kauai  
Ralph C. Honda..... Secretary-Oahu  
David Furtado..... Vice Secretary-Hawaii  
Joseph V. Hodgson..... Member-Oahu  
Emory B. Bronte..... Member-Oahu  
Charles J. Pietsch, Jr..... Member-Oahu  
George Y. Kobayashi..... Member-Oahu  
Lionel V. Duponte..... Member-Maui  
  
Richard H. Wheeler (Until Dec. 31, 1956) - Member-Oahu  
Cable A. Wirtz (Until Nov. 30, 1956)..... Member-Maui

## Administrative Staff

Mark E. Martin..... Airport Manager-Honolulu  
Gilbert Livingston..... Asst. Airport Manager-Honolulu  
William Neilson... Airport Manager-Maui County Airports  
Coin E. Perin... Airport Manager-Kauai County Airports  
C. W. Dahlberg..... Airport Manager-  
Hawaii County Airports  
Bo Tong Wat..... Finance Executive

*From left to right:*

Joseph V. Hodgson  
David Furtado  
George Y. Kobayashi  
Lionel V. Duponte  
Francis K. Sylva  
Emory B. Bronte  
Ralph C. Honda  
Dorsey W. Edwards  
Charles J. Pietsch, Jr.







**CONTENTS**

Report to the Governor.....page 3  
 10 Years of Progress.....page 5

**HONOLULU INTERNATIONAL AIRPORT**

Operational Tables .....page 8  
 Proposed Terminal Building.....centerspread

**TERRITORIAL AIRPORTS**

General Lyman Field.....page 13  
 Lihue Airport .....page 14  
 Kahului Airport .....page 15  
 Molokai Airport.....page 16  
 Port Allen Airport.....page 17  
 Kalaupapa Airport.....page 17  
 Lanai Airport .....page 18  
 Hana Airport .....page 18  
 Kamuela Airport.....page 19  
 Upolu Airport.....page 19  
 Kona Airport .....page 20  
 Kipapa Airfield.....page 20  
 Operational Tables .....page 21  
 Crossroads of the Shrinking Pacific.....page 23  
 Statement of Income and Expenditures .....page 24  
 Trends.....inside back cover



**Executive Officers**

A. P. Storrs.....Director of Aeronautics  
 R. M. Walton .....Asst. Director of Aeronautics

*2nd Floor*

**OVERSEAS TERMINAL BUILDING**

**HONOLULU INTERNATIONAL AIRPORT**





## *Report to the Governor*

Submitted herewith is the report covering the activities of the Hawaii Aeronautics Commission for the fiscal year ending June 30, 1957.

The Commission concentrated its time and efforts during most of the year on the completion of the Master Terminal Site Plan for Honolulu International Airport embodying development of a jet age airport and a modern passenger terminal building. The Commission held several meetings with the Air Lines Technical Committee representing airlines serving Hawaii, the Department of Public Works, the Civil Aeronautics Administration, and other users to develop this plan which was approved in September 1956.

Outstanding feature of the terminal site plan is the proposed passenger terminal building which will be constructed on the north side of the field near the area now occupied by Hawaiian Airlines, Ltd. Designed by Architect Theodore A. Vierra, the new terminal will be made up of four separate units. The main unit consists of the overseas departure section and an administration building. The administration building will provide office spaces for the Commission, the Civil Aeronautics Administration, Weather Bureau, various overseas airlines, and other users. The airport Control Tower will be located on the two top floors. The ground floor areas will be the overseas departure section. The restaurant and the public lobby will also be located in this section. The other three units are a domestic overseas arrival section, a foreign arrival section, and an inter-island section.

The terminal site plan also provides space for other facilities, such as cargo and freight buildings, aircraft servicing and maintenance areas, aeronautical school, automobile service station, auto parking area for 4,200 cars, lei stands, and a heliport.

The development of the new terminal site will be financed through Airport Revenue Bonds, Territorial General Obligation Bonds, and Federal funds. The Commission contracted the services of Lockheed Air Terminal, Inc. for a study on the financial structure of the Commission and to recommend changes in rates and charges for the use of airport facilities so that future revenues will be adequate for the refunding of the obligations incurred in the construction and development of the new airport.

The Territorial Legislature enacted three joint resolutions to implement the development and expansion of Honolulu Airport. These resolutions are now before Congress and when enacted will authorize certain land exchanges between the Territory, the U. S. Navy and the



*Governor William Quinn conferring with Dr. Francis K. Sylva, Chairman of the Hawaii Aeronautics Commission.*



U. S. Air Force for the development of the Honolulu International Airport complex (comprised of the Master Plan development of Honolulu International Airport by the Territory, Hickam Air Force Base by the U. S. Air Force and Keehi Lagoon by the U. S. Navy), the issuance of \$14,000,000 aviation revenue bonds by the Commission, and allow the Commission to lease land for a maximum period of 65 years.

Appraisal of the Damon Tract area needed for the expansion of the airport has already been completed. Condemnation proceedings to acquire land will be instituted shortly by the Attorney General.

Preliminary work for the site preparation of the proposed terminal building has already been undertaken with the stockpiling of coral fill to be used for filling and grading, and the demolition of buildings in the Naval Air Facility area.

Runway 14-32 at Honolulu International Airport was permanently closed in order to permit the U. S. Navy to utilize the south end of the runway and the adjacent area for the repair and maintenance of Navy radar planes by Lockheed Aircraft Service. This is one of the existing runways to be phased-out in the development of the jet age airport and its closing does not curtail aircraft operations at the airport.

Title to Kahului Airport on Maui was officially transferred to the Territory in December 1956, when Quitclaim Deed authorized by Public Law 377, 82nd Congress, was executed by the Navy Department. Kahului Airport is made up of 1,335 acres of land acquired by the Navy for \$467,000 and developed into a major naval air facility at a cost of \$28,000,000.

Transfer of the airport and all improvements thereon to the Territory will permit the Commission to proceed with the further development of this airport, including the construction of a new Control Tower to replace the interim Control Tower and installation of a permanent runway lighting system. The Department of Public Works has been authorized to proceed with final plans for the new construction. Both projects will be financed with Territorial and Federal-aid funds.

The Commission also accepted a deed from Hana Ranch Co., Ltd. for 19.8 acres of land adjacent to Hana Airport for the ultimate expansion of that airport.

Construction of a new passenger-freight terminal building for Moloakai Airport at a cost of \$220,000 was completed and the new facility was put into operation in June 1957.

A public hearing was held by the Commission at the Kohala Courthouse concerning the status of Upolu Airport. The hearing was attended by representatives of the Department of Public Works, Civil Aeronautics Administration, members of the Territorial Legislature, County officials, representatives of the inter-island airlines, community leaders and other interested parties. The Commission explained that the airport, although usable, is now in very poor condition and would

require general repair, drainage improvements and runway reconstruction which would cost a considerable amount of money. All those who spoke at the hearing were unanimously in favor of keeping the airport in operation. The Commission authorized repairs to a damaged portion of the runway and to continue the airport in operation.

Emory B. Bronte, prominent local businessman and pioneer airman who made the first civilian plane flight with Ernest Smith from California to Hawaii 30 years ago, was appointed to the Commission. He succeeds Richard H. Wheeler whose term expired.

Lionel V. Duponte was appointed Maui member of the Commission, succeeding Cable A. Wirtz, resigned.

John E. Batchelder, assistant director of aeronautics, resigned as of September 30, and the Commission appointed R. M. Walton as his successor.

Randolph M. Lee, director of aeronautics, resigned as of November 15, and Walton was named acting director of aeronautics until the appointment of a new director.

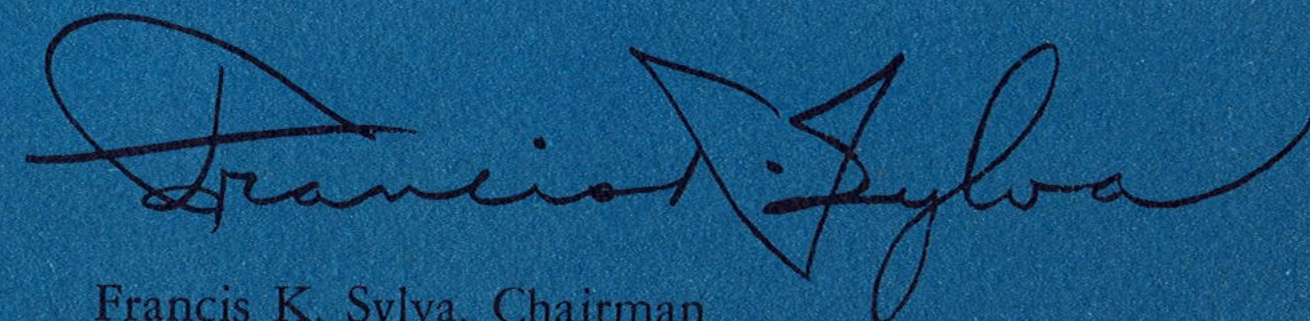
Our territorial airport system continued to show increases in traffic volumes. Aircraft operations at Honolulu International Airport increased 26 percent over the preceding year, to a total of 245,046 take-offs and landings. The airport was ranked with those on the mainland United States for the first time in calendar year 1956 by the Civil Aeronautics Administration in its Federal Airways Air Traffic Activity report and placed 18th in this category. At the end of the fiscal year 1957, it was in 14th place. Aircraft operations at neighbor island airports went up 16.7 percent.

Overseas passenger traffic showed an increase of 16.3 percent for a total of 375,396 outgoing, incoming and through passengers. Inter-island passenger traffic showed a gain of 4.1 percent for a total of 653,147 passengers.

Revenue from the aviation fuel tax amounted to \$1,286,373 and other revenues amounted to \$612,444 from fees, rentals and other charges, \$245,823 in Federal grants and \$1,773 from other sources.

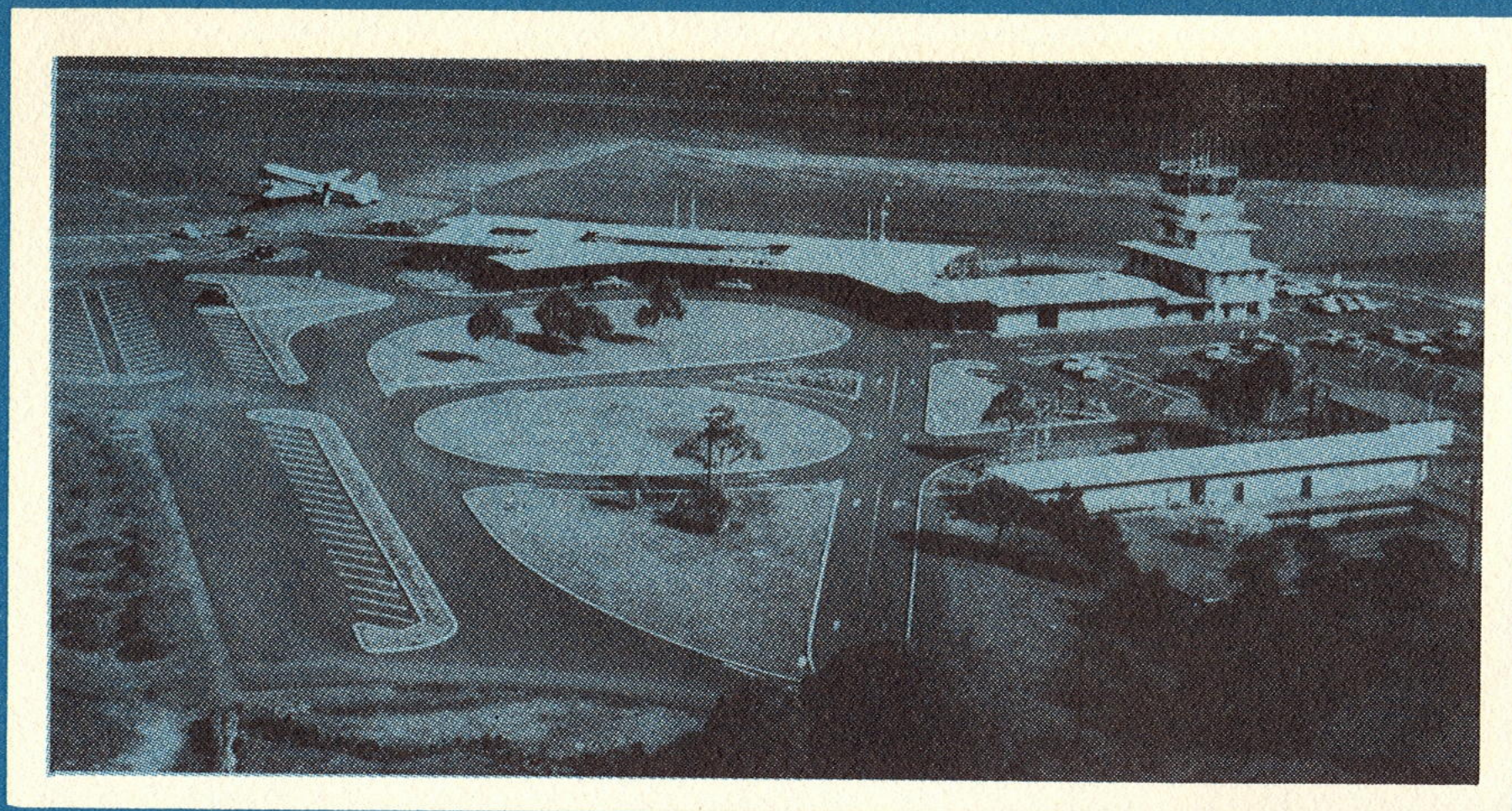
Expenditures for the year amounted to \$1,192,737 for operating expenses, \$772,770 for improvements and capital projects and \$57,840 for bond redemption.

Respectfully submitted,

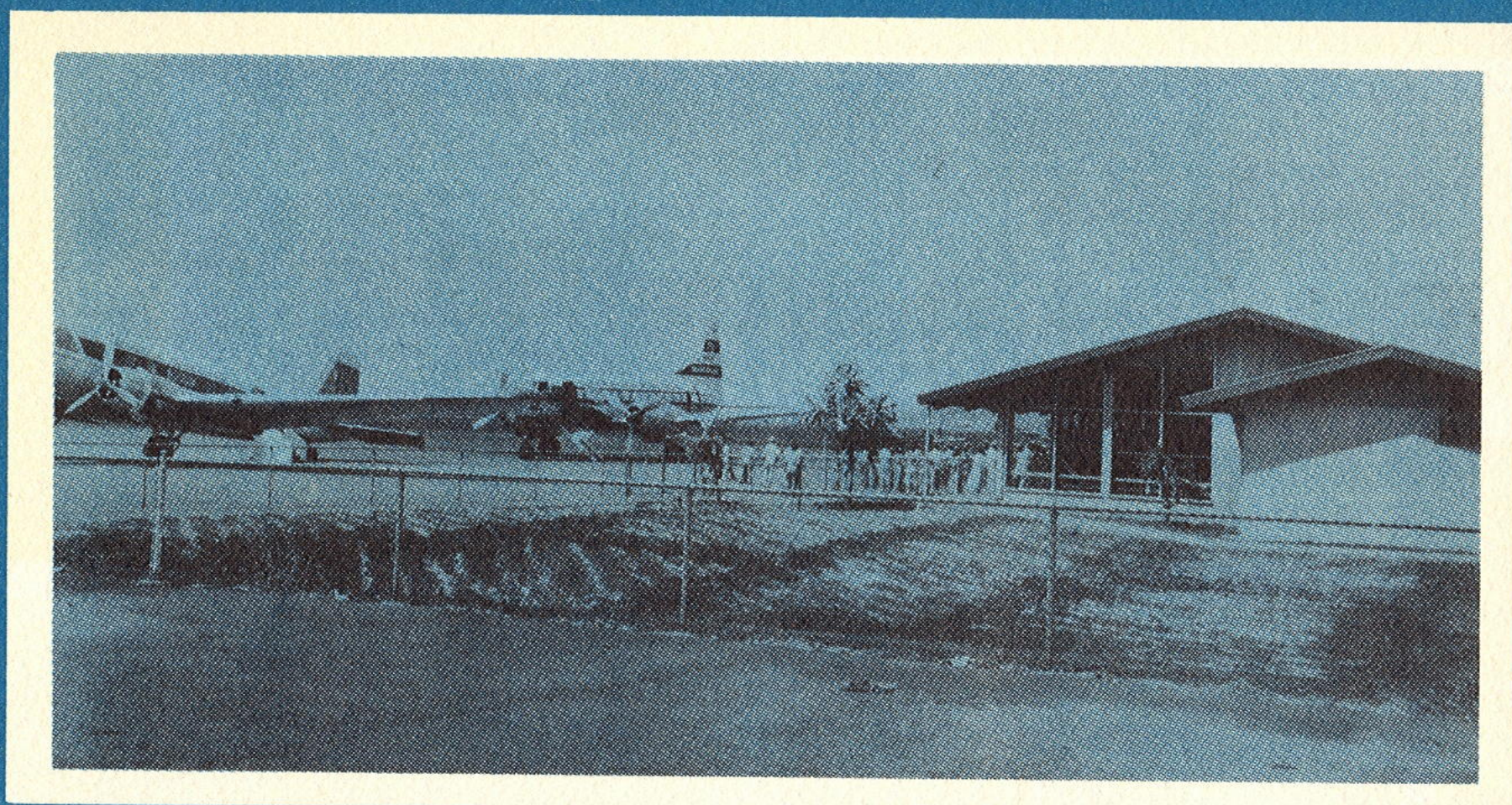


Francis K. Sylva, Chairman  
Hawaii Aeronautics Commission

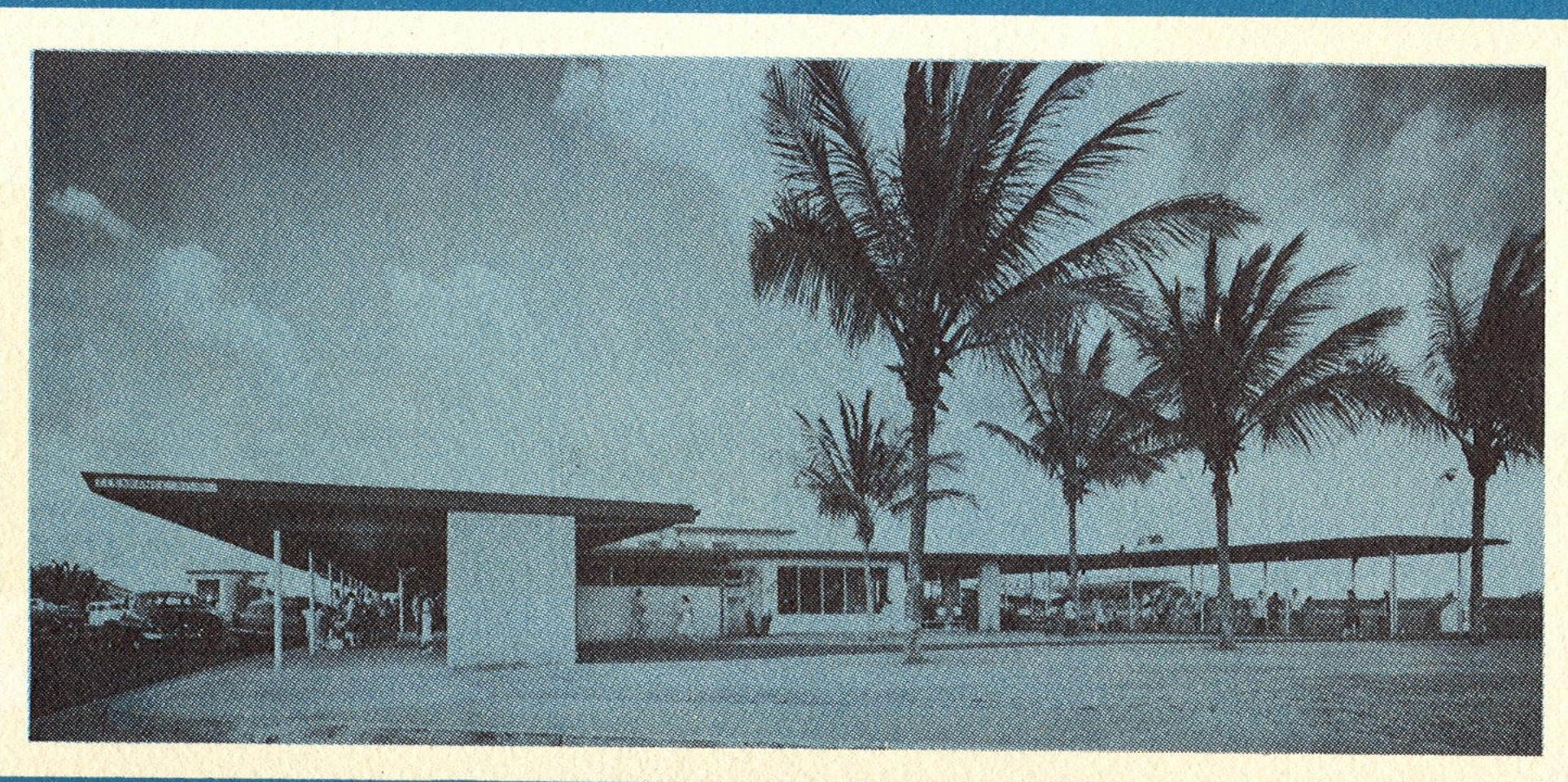




*Hilo passenger terminal building.*



*Molokai's new terminal building.*



*Lihue passenger terminal showing recent alterations.*



# 10 *years of progress*

Act 32, Session Laws of Hawaii 1947, created an Aeronautics Commission for the Territory of Hawaii. This Act transferred to the Hawaii Aeronautics Commission the powers vested in the Superintendent of Public Works (Session Laws of Hawaii 1941) to take effect not later than July 1, 1947.

At the time of its inception the Commission had under its control 14 airports. Since that time, five have been abandoned and four new ones constructed.

New passenger terminals were erected at Hilo, Kamuela, Lihue, and Molokai. Building plans are now in the final stage for new terminal facilities at Honolulu International Airport. This will be constructed on the north side of the field at a cost of \$22,000,000.

Figures published in the first annual report of the Hawaii Aeronautics Commission are as follows:

Inter-island passengers	392,038
Overseas passengers	105,498
Total Aircraft Operations - (Honolulu International Airport)	181,642

Statistics for the past twelve months are:

Inter-island passengers	653,147
Overseas passengers	375,396
Total Aircraft Operations (Honolulu International Airport)	245,046



The above passenger figures are expected to triple in the next ten years.

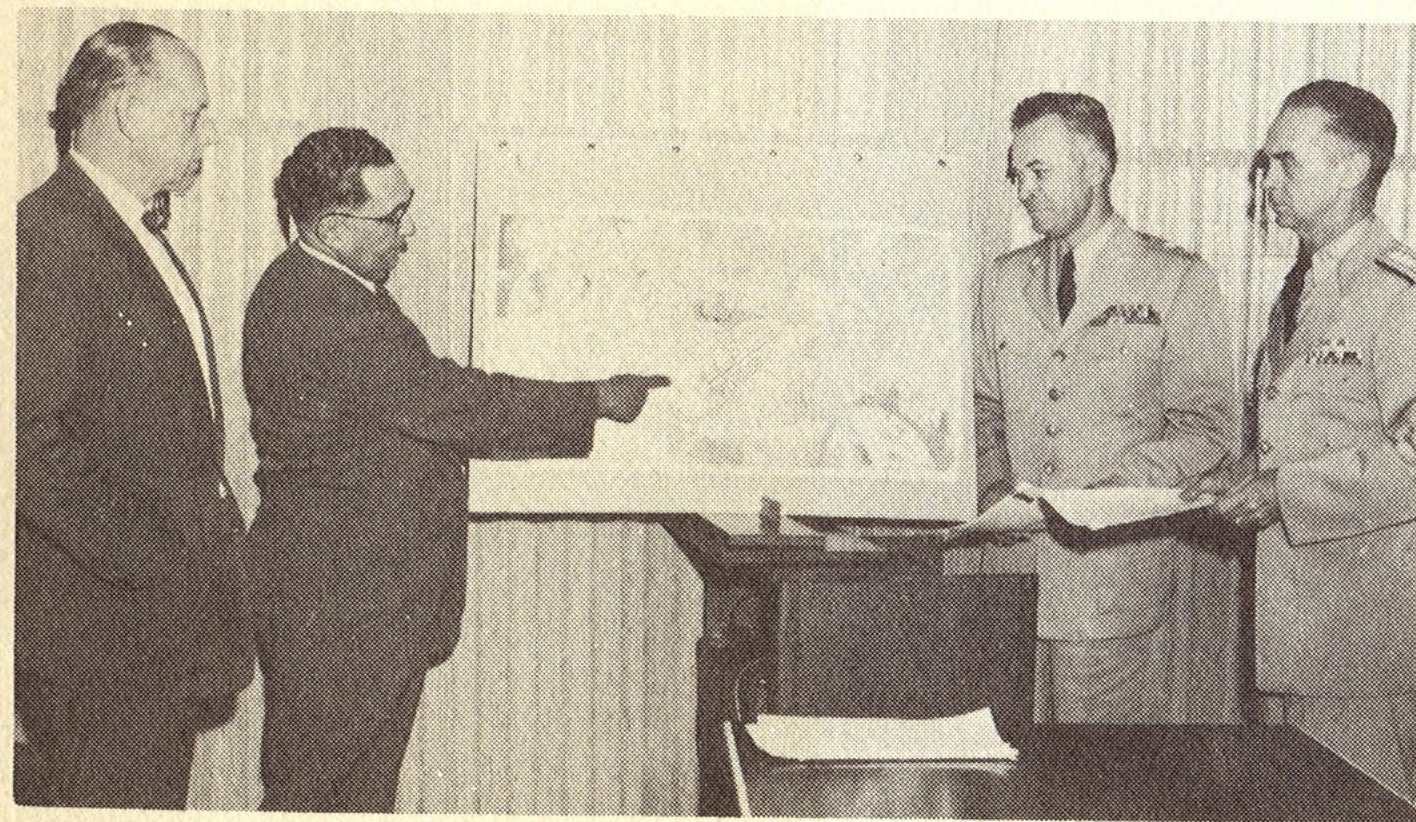
Quoting from the first annual report of the H.A.C., "The present airport facilities for both Inter-island and Overseas operations are already inadequate and much has to be done in the way of improvements and new construction to provide for the rapid increase of air commerce."

During the ensuing ten years much has been done to expand facilities at all airports; however, the present terminal at Honolulu International Airport has reached its saturation point. The necessity for new and greatly expanded facilities is self-evident and the H.A.C. is doing everything within its power to expedite the proposed expansion program.

Dredging and stockpiling of 700,000 cu. yds. of coral fill material is approximately 45% complete. This being done at a cost of \$567,000.

Buildings in the old N.A.F. area were demolished or removed and the land cleared.

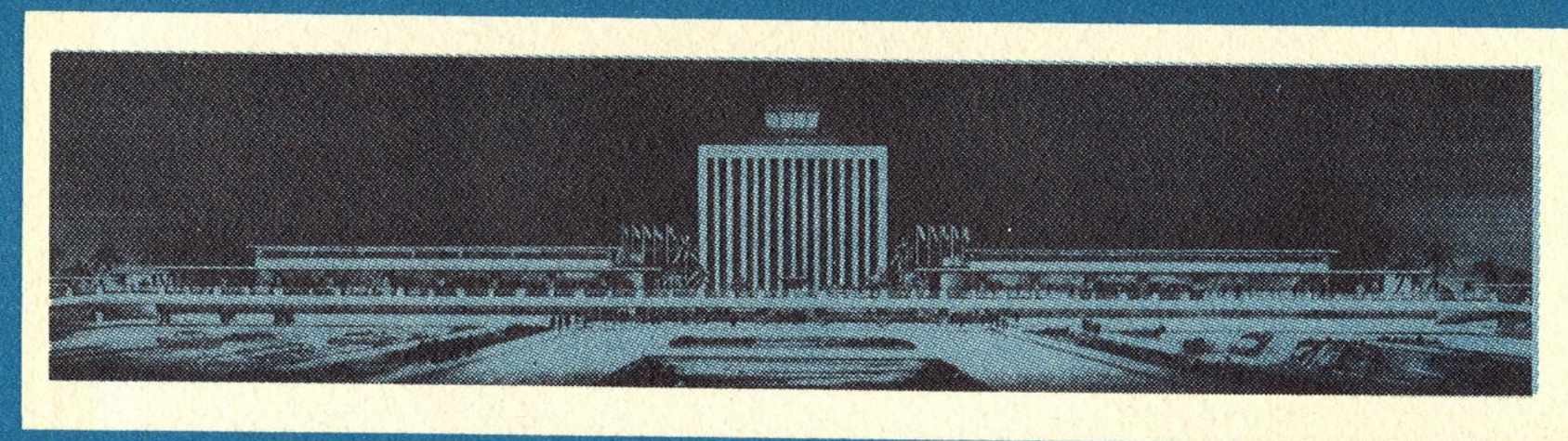
Twenty-five-year cross-leases were drawn up and executed. The agencies involved in this land transfer are the Army, Navy, Air Force, C.A.A. and the T.H. A bill now before Congress will make the land transfer permanent.



*Land Exchange Ceremony with Chairman Sylva (pointing) and Director A. P. Storrs, representing the H.A.C., Maj. General Sory Smith, U.S.A.F., and Rear Admiral Neil K. Dietrich, U.S.N.*



*Coral fill stock pile area, Honolulu International Airport.*



*Overseas departure building—new Honolulu terminal building.*



*Old NAF area as cleared for airport expansion.*





*Honolulu International Airport. Owned by the Territory of Hawaii and operated by the Hawaii Aeronautics Commission. Runway 8-26 is the longest civil runway in the United States.*

↑  
N



# Honolulu International Airport

4 Miles WNW of Honolulu, Oahu  
Airport Service Type—Intercontinental Express

The runway configuration at Honolulu International Airport, with the 13,000-foot runway and dual 4-22 runways, is more than adequate to handle traffic, both jet and conventional aircraft for many years to come.

The Master Plan agreed upon by the Territory of Hawaii, the United States Air Force and the United States Navy calls for a jet take-off runway to be constructed by the Military.

Present congestion in the passenger terminal and servicing areas will be relieved only when the proposed new facilities are completed. The Hawaii Aeronautics Commission is working towards completion in 1960.

LANDPORT AREA 1260 Acres

RUNWAYS:

8-26 (Paved) 200' x 13,104'  
4R-22L (Paved) 200' x 7004'  
4L-22R (Paved) 200' x 6950'

SEADROME AREA 2793 Acres

SEALANES:

4-22 1000' x 15,312'  
14-32 1000' x 10,560'  
7-25 1000' x 15,827'

	<i>This Year</i>	<i>Last Year</i>
Aircraft Operations	245,046	194,459
Air Carrier Revenue Operations	44,254	43,342
Passenger Traffic	950,883	881,814
Air Cargo—Pounds	33,917,115	28,813,511
Air Mail—Pounds	8,205,659	8,240,600

INITIAL LAND ACQUISITION—1927 ..... \$ 27,410

ADDITIONAL LAND PURCHASED—1943 ..... 69,660

ORIGINAL CONSTRUCTION (1927-1941)

Territorial Funds .....	143,827
Public Donations .....	20,000
Federal Funds .....	3,404,300

POST-WAR IMPROVEMENTS

Rehabilitation of Temporary Buildings .....	95,424
Rehabilitation of Runways .....	152,392
Auxiliary Power Systems .....	15,144
Fencing and Drainage .....	33,822
Improvements to Overseas Terminal Building .....	170,593
Extension of Runway 8-26 and Taxiway to Hickam Field Boundary .....	70,781
High Intensity Lighting System, Runway 8-26.....	151,799
Medium Intensity Lighting System, Runway 4L-22R .....	149,553
Acquisition and Improvements to Hangars .....	125,480
Lei Vendor Stands .....	31,710
Miscellaneous Improvements .....	129,443
Small Plane Hangars .....	97,034
Maintenance and Baseyard Buildings .....	118,000
Projects in the Planning Stage: Construction of New Terminal Building and Allied Facilities including Land Acquisition.....	21,817,570

*Model of overseas departure section  
of proposed new passenger terminal.*





## Aircraft Operations Summary

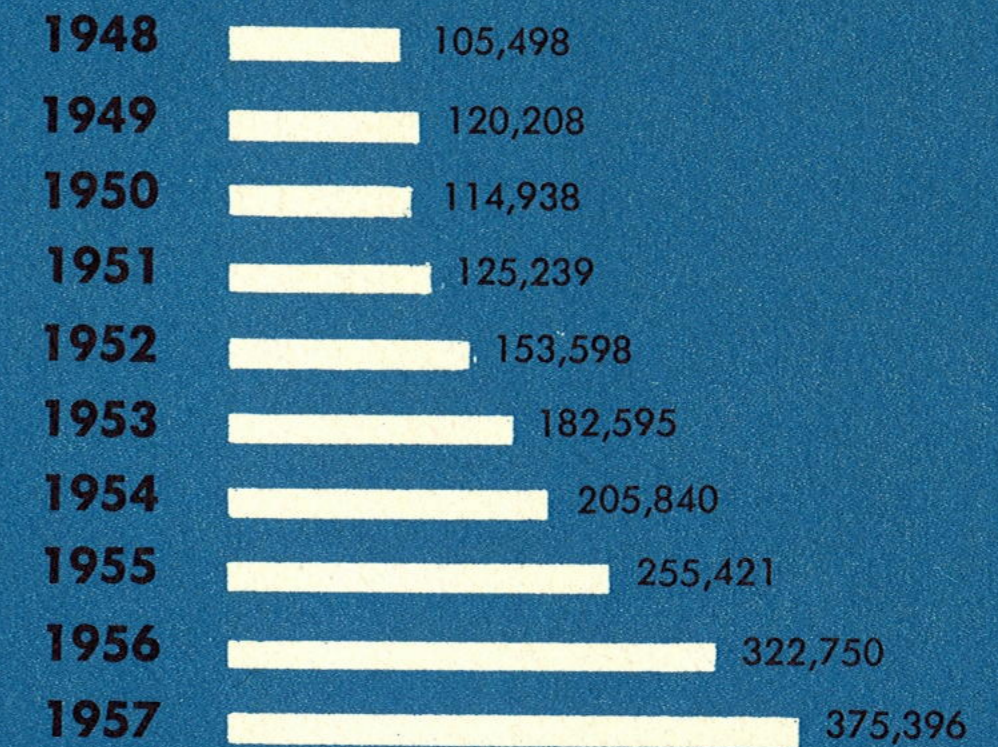
### Fiscal Year July 1, 1956 to June 30, 1957

#### By Months

	Air Carriers	Civilian Aircraft	Military Aircraft	Total Operations
1956 July	6,865	1,912	9,781	18,558
August	7,354	2,103	10,495	19,952
September	6,942	2,306	10,190	19,438
October	6,805	2,547	12,102	21,454
November	6,155	1,745	10,696	18,596
December	6,086	2,270	11,187	19,543
1957 January	6,133	1,521	11,128	18,782
February	5,675	1,680	12,160	19,515
March	6,266	1,925	13,345	21,536
April	6,243	1,762	11,654	19,659
May	6,992	2,563	13,632	23,187
June	9,533	2,617	12,676	24,826
<b>TOTALS</b>	<b>81,049</b>	<b>24,951</b>	<b>139,046</b>	<b>245,046</b>
1955-56 Fiscal Year Totals	62,447	23,798	108,214	194,459
Percent gain or loss	29.8	4.8	28.5	26.0

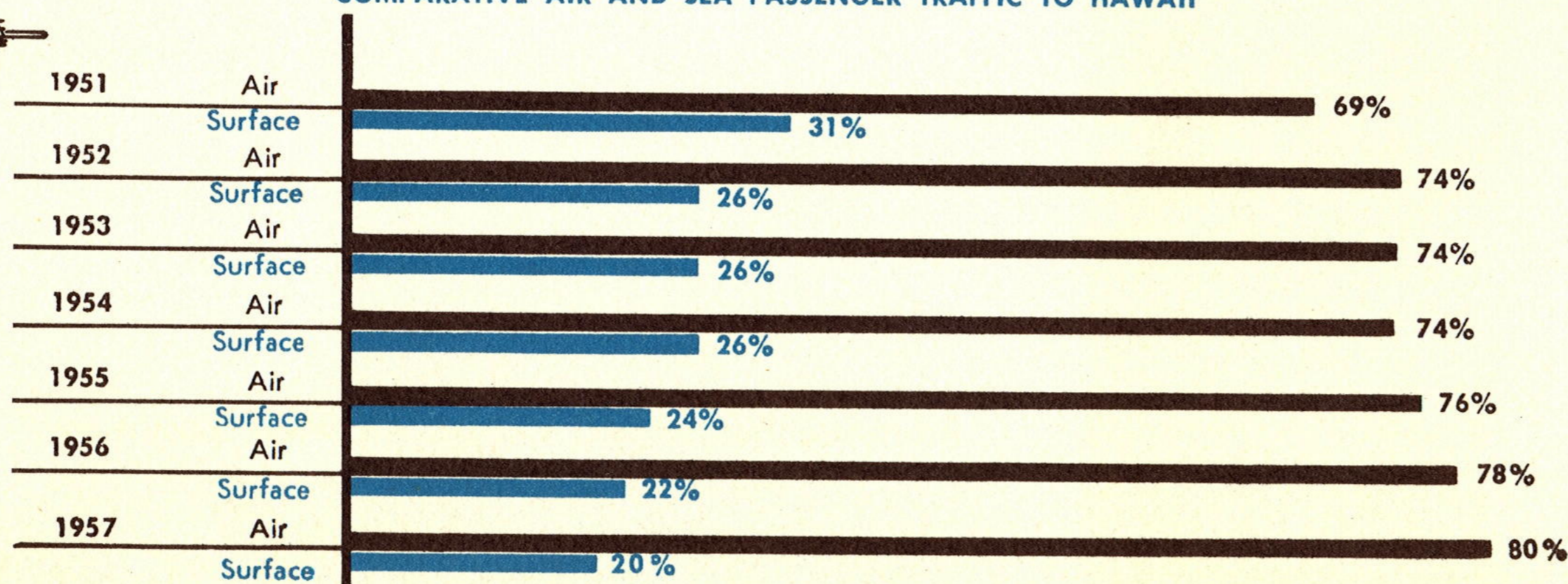
## OVERSEAS AIR PASSENGER VOLUME

By Fiscal Years



Above totals represent incoming, outgoing and through passenger traffic, and do not include military charter flight passengers.

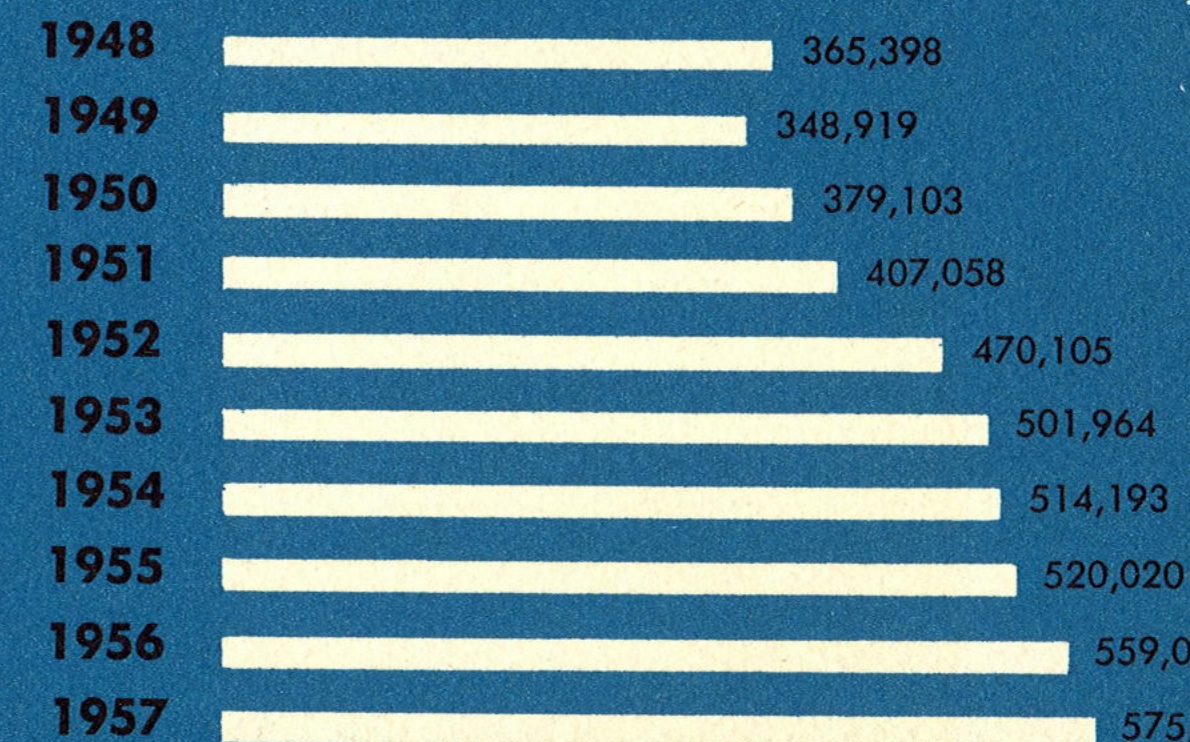
### COMPARATIVE AIR AND SEA PASSENGER TRAFFIC TO HAWAII



SOURCE: HAWAII VISITORS BUREAU

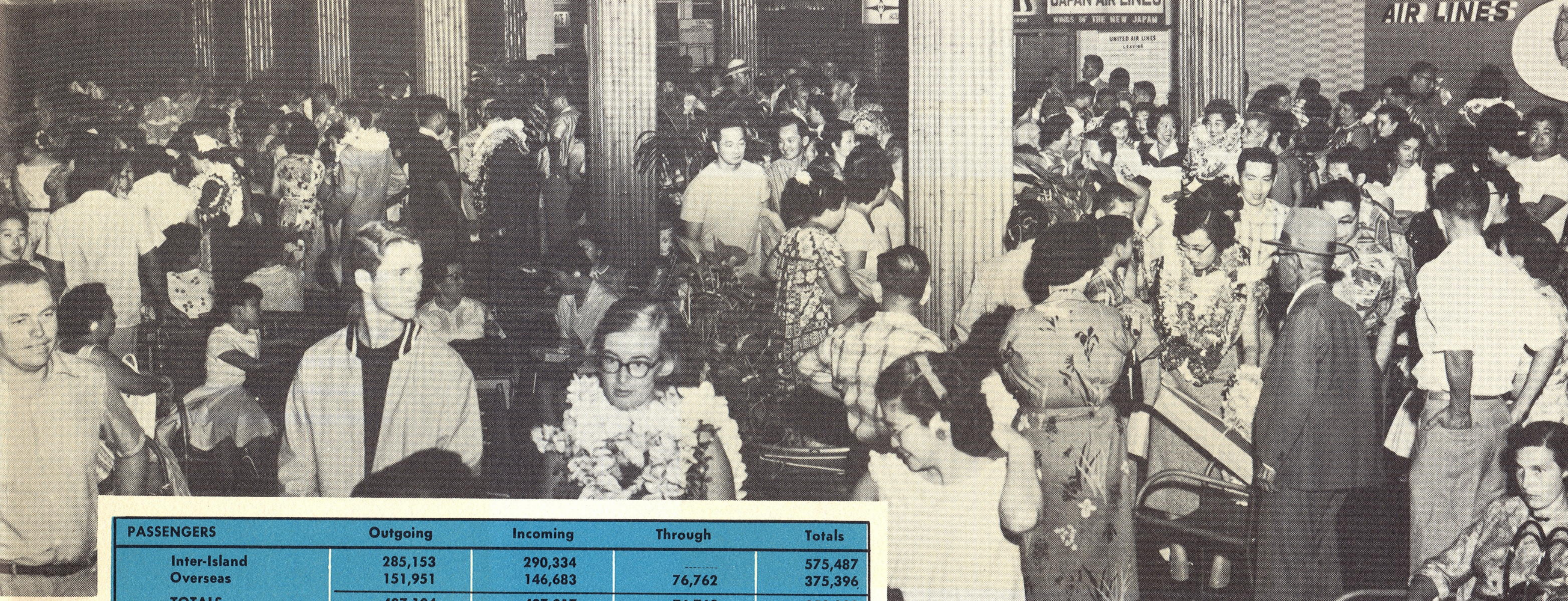
## INTER-ISLAND AIR PASSENGER VOLUME

By Fiscal Years



Above totals represent incoming and outgoing passenger traffic.





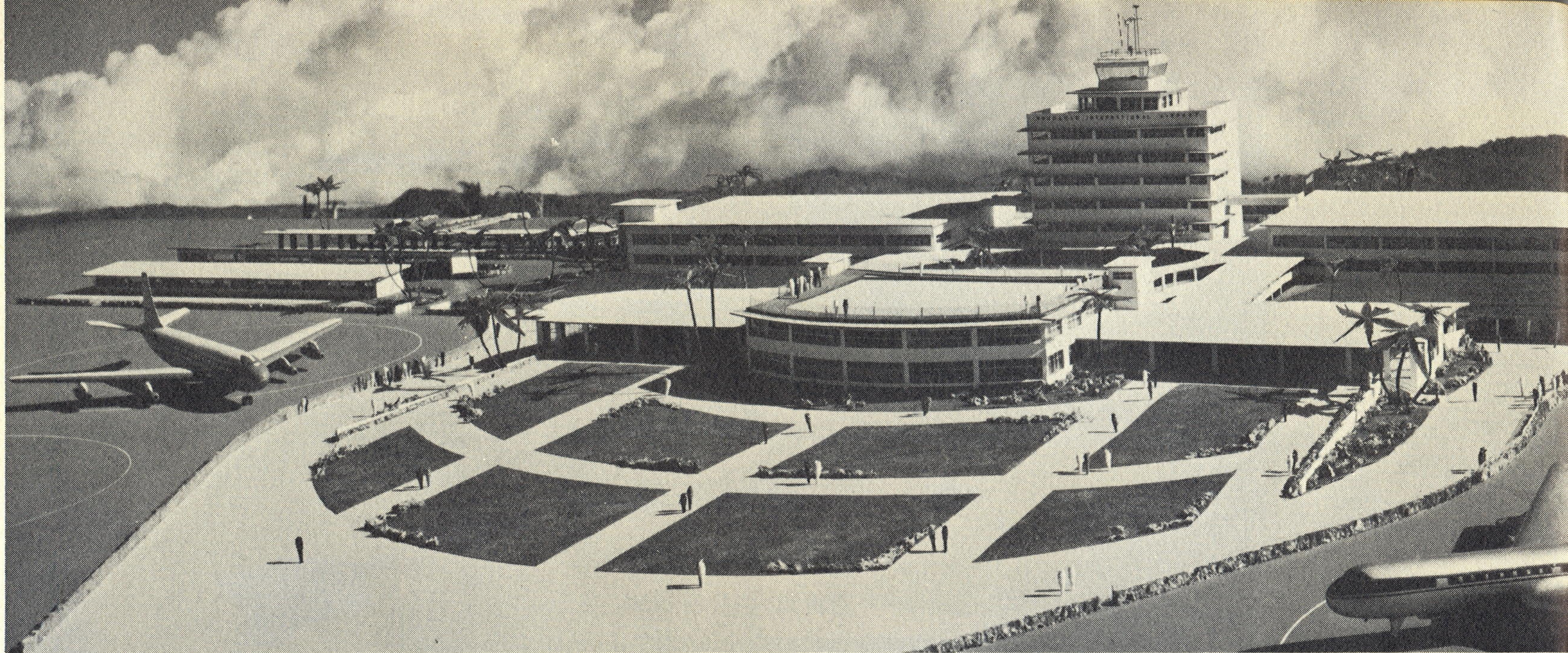
*Typical peak hour crowd in lobby of present terminal building.*

<b>PASSENGERS</b>				
	<b>Outgoing</b>	<b>Incoming</b>	<b>Through</b>	<b>Totals</b>
Inter-Island	285,153	290,334	-----	575,487
Overseas	151,951	146,683	76,762	375,396
<b>TOTALS</b>	<b>437,104</b>	<b>437,017</b>	<b>76,762</b>	<b>950,883</b>
1955-56 Fiscal Year Totals	406,742	410,090	64,982	881,814
Percent gain or loss	7.5	6.6	18.1	7.8
<b>CARGO</b>				
	<b>Outgoing Pounds</b>	<b>Incoming Pounds</b>	<b>Through Pounds</b>	<b>Totals Pounds</b>
Inter-Island	12,216,029	8,023,239	-----	20,239,268
Overseas	1,452,867	2,143,489	10,081,491	13,677,847
<b>TOTALS</b>	<b>13,668,896</b>	<b>10,166,728</b>	<b>10,081,491</b>	<b>33,917,115</b>
1955-56 Fiscal Year Totals	14,323,141	9,824,478	4,665,892	28,813,511
Percent gain or loss	- 4.6	3.5	116.1	17.7
<b>AIR MAIL</b>				
	<b>Outgoing Pounds</b>	<b>Incoming Pounds</b>	<b>Through Pounds</b>	<b>Totals Pounds</b>
Inter-Island	416,311	432,128	-----	848,439
Overseas	1,811,008	2,151,757	3,394,455	7,357,220
<b>TOTALS</b>	<b>2,227,319</b>	<b>2,583,885</b>	<b>3,394,455</b>	<b>8,205,659</b>
1955-56 Fiscal Year Totals	2,062,894	2,299,001	3,878,705	8,240,600
Percent gain or loss	8.0	12.4	- 12.5	- 0.4

### Revenue Passenger, Cargo, Air Mail Summary

Fiscal Year July 1, 1956 to June 30, 1957





*Field side view of the Overseas Departure building.*

## *First phase of Construction . . .*

*Model of the new Overseas Departure building. The 1/16 scale model was constructed by architect Theodore Vierra for planning purposes.*







*Main entrance.*



*Passenger unloading from street ramp at second floor level.*



*View from ramp showing Skyroom restaurant and control tower.*





## General Lyman Field

2.1 Miles E of Hilo, Hawaii  
 Airport Service Type—Continental

LAND AREA	650 Acres
RUNWAYS:	
8-26 (Paved)	200' x 6500'
3-21 (Paved)	150' x 5600'

	<i>This Year</i>	<i>Last Year</i>
Aircraft Operations	27,866	34,308
Air Carrier Revenue Operations	9,876	10,282
Passenger Traffic	181,024	188,885
Air Cargo—Pounds	5,960,372	7,042,636
Air Mail—Pounds	406,018	387,263

### INITIAL LAND ACQUISITION—1928 ..... Territorial Land ORIGINAL CONSTRUCTION (1928-1941)

Territorial Funds .....	\$125,243
Federal W.P.A. Funds .....	34,148
C.A.A. National Defense Funds .....	314,000

### POST-WAR IMPROVEMENTS

Rehabilitation of Roads, Runways and Fencing .....	56,782
Terminal and Administration Building .....	381,856
Aircraft Parking Aprons, Access Roads, Runways, and Auto Park .....	293,479
Freight Terminal Building .....	110,957
Small Plane Hangars .....	38,592
High Intensity Lighting System, Runway 8-26 .....	182,070
Reconstruction of Runway, Taxiway, Drainage and Medium Intensity Lighting for Runway 3-21 .....	508,000
Miscellaneous Projects .....	65,447
Passenger Terminal for Military Traffic .....	3,900
Grading, Filling and Landscaping .....	31,067



## Libue Airport

1.5 Miles ENE of Lihue, Kauai  
Airport Service Type—Trunkline

LAND AREA 153 Acres

### RUNWAY:

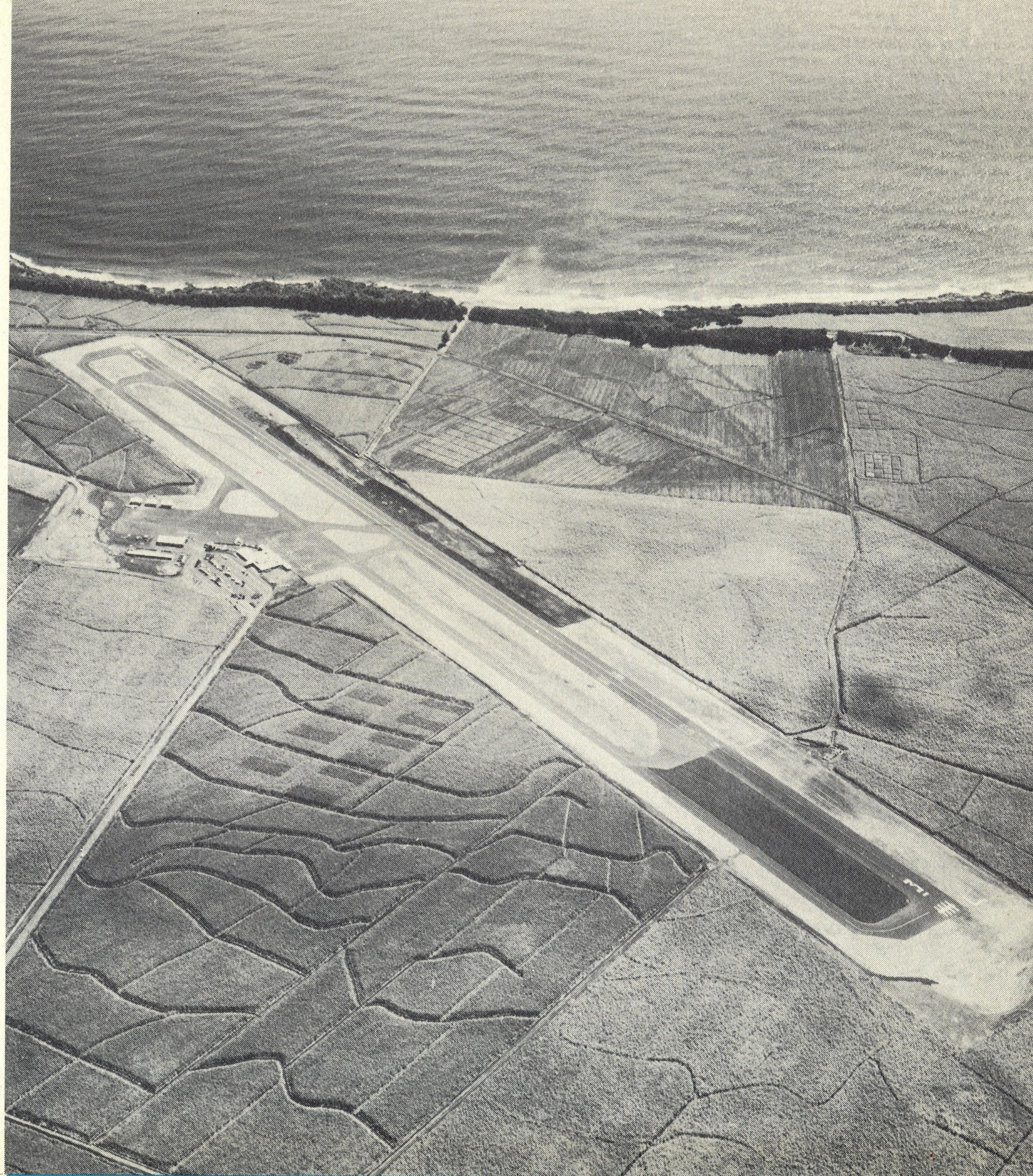
3-21 (Paved) 100' x 5100'

	<i>This Year</i>	<i>Last Year</i>
Aircraft Operations	30,143	10,798
Air Carrier Revenue Operations	9,552	9,208
Passenger Traffic	189,239	169,461
Air Cargo—Pounds	3,598,501	3,531,815
Air Mail—Pounds	142,145	124,347

INITIAL LAND ACQUISITION—1948 .....	\$100,017
ADDITIONAL LAND PURCHASED .....	6,382

### ORIGINAL CONSTRUCTION—1948

Construction of Airstrip and Paved Runway .....	426,233
Additional Taxiways and Parking Aprons .....	252,621
Extension of Runway to 5100 feet .....	183,420
Water System .....	55,564
Passenger Terminal Building .....	97,223
Alteration and Extension to Passenger Terminal .....	113,223
Freight Terminal Building .....	23,662
T-Hangars .....	15,767
Medium Intensity Runway Lighting System .....	68,059
Landscaping .....	2,541
Miscellaneous Projects .....	17,620
Covered Walkway and Baggage Claim Counters.....	47,049







## Kahului Airport

2.5 Miles E of Kahului, Maui  
 Airport Service Type—International

LAND AREA 1335 Acres

### RUNWAYS:

2-20 (Paved)	200' x 7000'
5-23 (Paved)	300' x 5000'
17-35 (Paved)	200' x 5100'

	<i>This Year</i>	<i>Last Year</i>
Aircraft Operations	34,625	31,602
Air Carrier Revenue Operations	18,222	18,434
Passenger Traffic	202,425	188,048
Air Cargo—Pounds	5,680,780	5,924,072
Air Mail—Pounds	181,734	163,804

INITIAL LAND ACQUISITION—1942 ..... U.S. Navy  
 ORIGINAL CONSTRUCTION (1942-1945) ..... U.S. Navy

### POST-WAR IMPROVEMENTS

Temporary Passenger Terminal Building and Facilities .....	\$ 93,421
Temporary Freight Terminal Buildings and Facilities .....	22,244
Temporary Control Tower .....	12,100
Temporary Small-Plane Hangars .....	7,050
Landscaping } .....	32,407
Miscellaneous Projects }	
Projects Under Construction:	
New Control Tower .....	120,000
Medium Intensity Lighting System, Runway 2-20	159,000



# Molokai Airport

7 Miles NW of Kaunakakai, Molokai  
 Airport Service Type—Trunkline

LAND AREA 304 Acres

RUNWAYS:

5-23 (Paved) 100' x 4500'  
 17-35 (Paved) 100' x 3100'

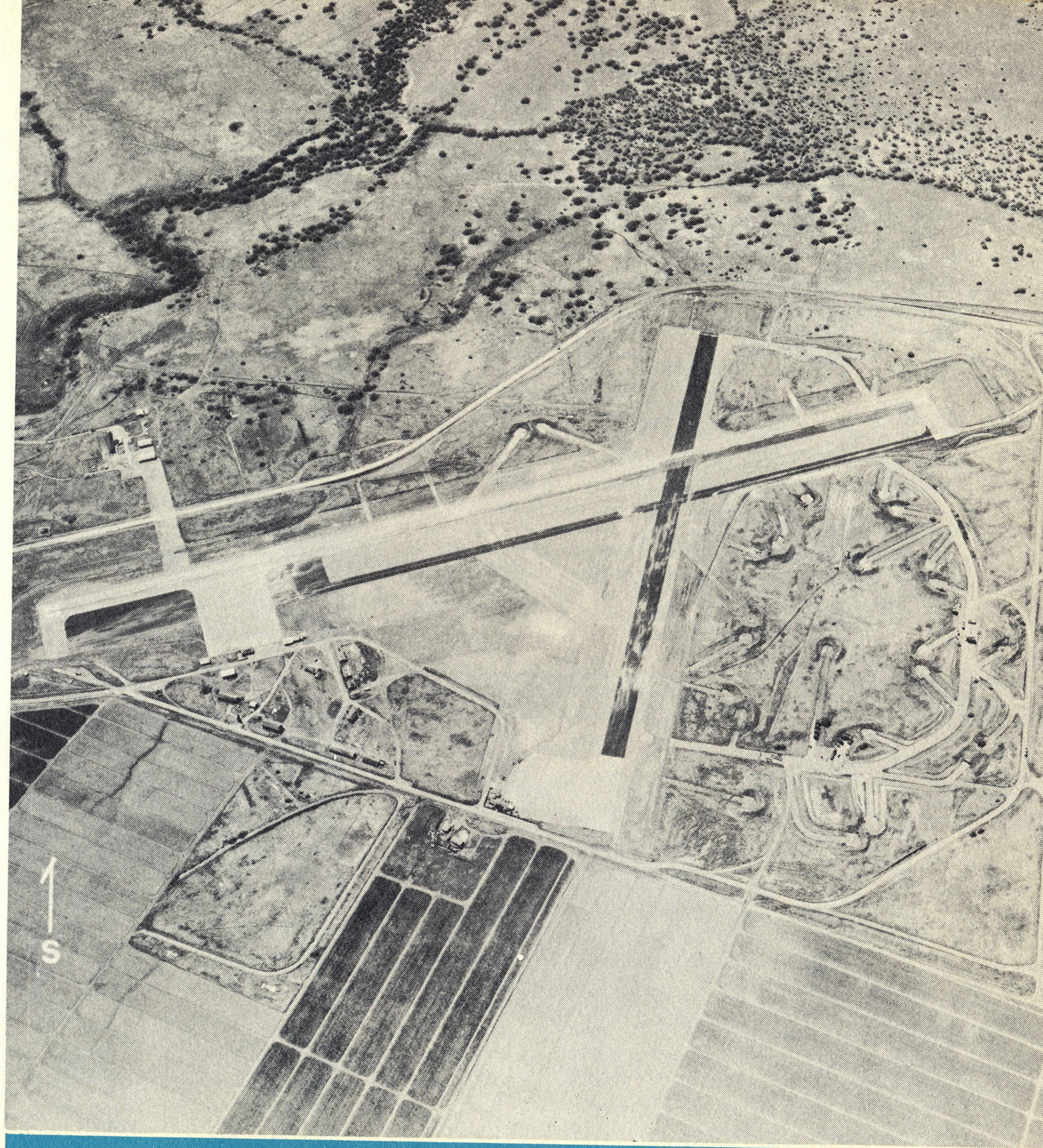
	<i>This Year</i>	<i>Last Year</i>
Air Carrier Revenue Operations	7,254	7,182
Passenger Traffic	47,463	45,781
Air Cargo—Pounds	1,030,157	1,088,266
Air Mail—Pounds	26,256	23,981

INITIAL LAND ACQUISITION—1927.....Territorial Land  
 ORIGINAL CONSTRUCTION (1927-1941)

Territorial General Funds .....	\$ 70,659
Federal W.P.A. Funds .....	102,221

POST-WAR IMPROVEMENTS

Installation of Hazard Beacon and Obstruction Lights .....	11,196
Runway Drainage System .....	29,460
Resurfacing Runways and Taxiways .....	26,309
Miscellaneous Projects .....	14,319
Medium Intensity Runway Lighting System.....	65,000
Passenger and Freight Terminal Building.....	130,000
Aircraft Apron and Auto Park .....	90,000





## Port Allen Airport

1 Mile SW of Hanapepe, Kauai  
 Airport Service Type—Personal

LAND AREA 180 Acres

### RUNWAYS:

5-23 (Paved) 100' x 2600'  
 9-27 (Graded) 60' x 2500'

Private Flying Activity

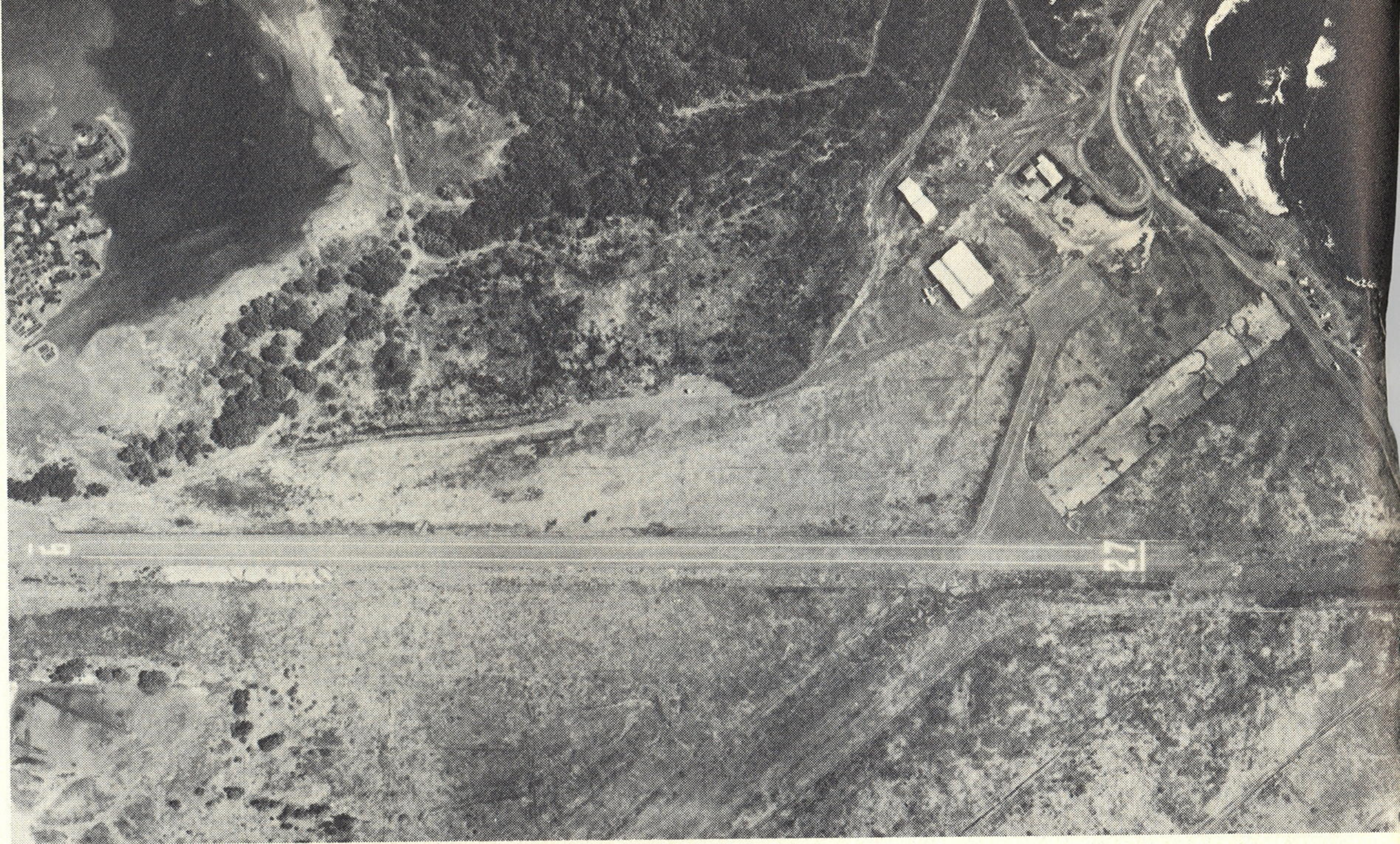
INITIAL LAND ACQUISITION.....Territorial Land

### ORIGINAL CONSTRUCTION (1927-1941)

Various W.P.A. Projects ..... \$127,100

### POST-WAR IMPROVEMENTS

Rehabilitation of Runways and Construction  
 of Waiting Room ..... 33,457



## Kalaupapa Airport

1.5 Miles N of Kalaupapa, Molokai  
 Airport Service Type—Personal

LAND AREA 17 Acres

### RUNWAY:

5-23 (Graded) 100' x 2650'  
 (Paved portion) 50' x 1658'

	<i>This Year</i>	<i>Last Year</i>
Air Carrier Revenue Operations	1,886	1,758
Passenger Traffic	2,472	2,425
Air Cargo—Pounds	506,593	476,442
Air Mail—Pounds	37,855	38,273

INITIAL LAND ACQUISITION—1934 ..... Territorial Land

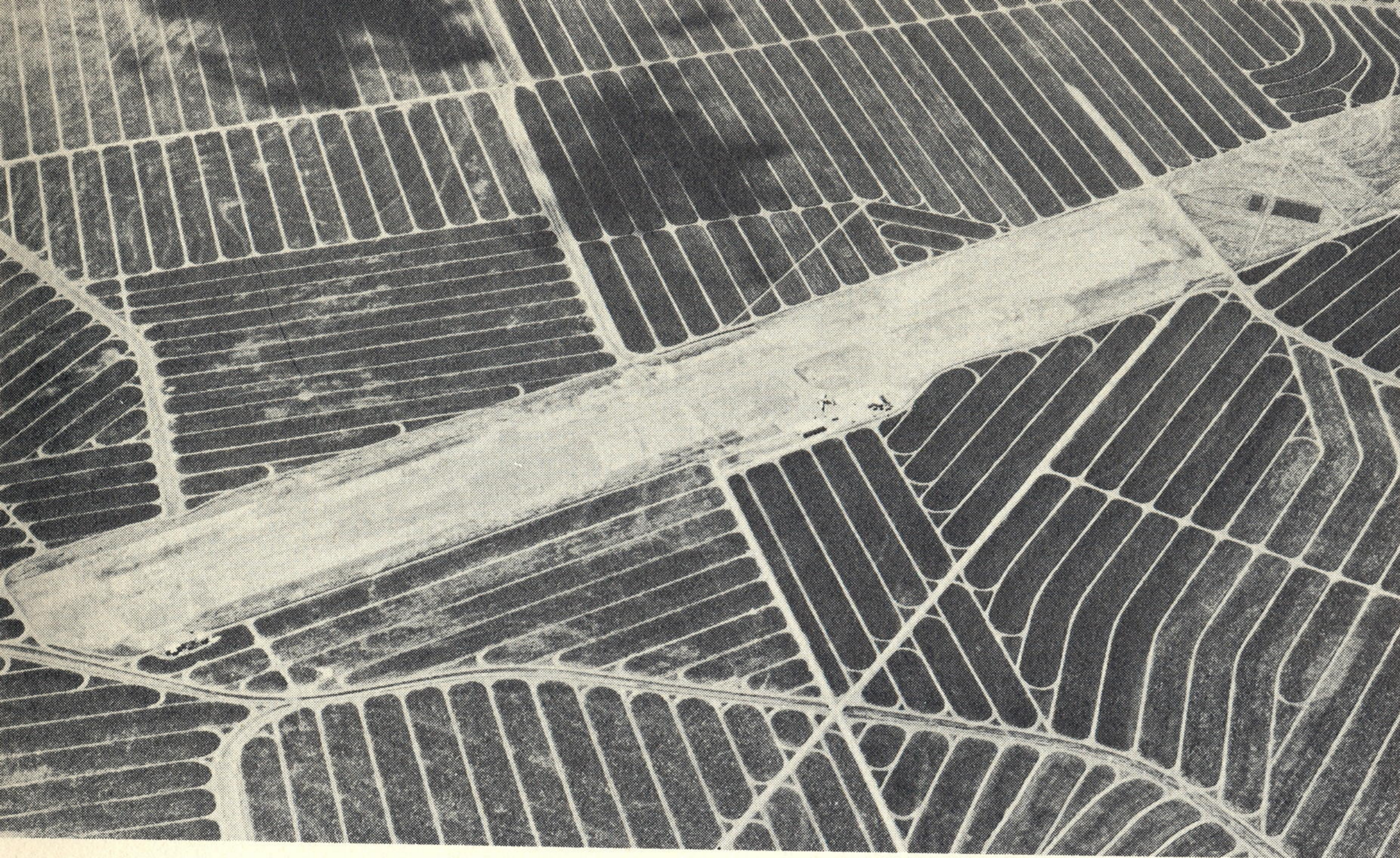
ORIGINAL CONSTRUCTION—1934.....Territory

### POST-WAR IMPROVEMENTS

Paving Runway and Aircraft Apron ..... \$65,162  
 Passenger Terminal Building ..... 4,772  
 Alterations to Passenger Terminal Building ..... 4,500  
 Equipment Building ..... 2,200







## Lanai Airport

3.5 Miles SW of Lanai City, Lanai  
 Airport Service Type—Secondary

LAND AREA 59 Acres

RUNWAY:

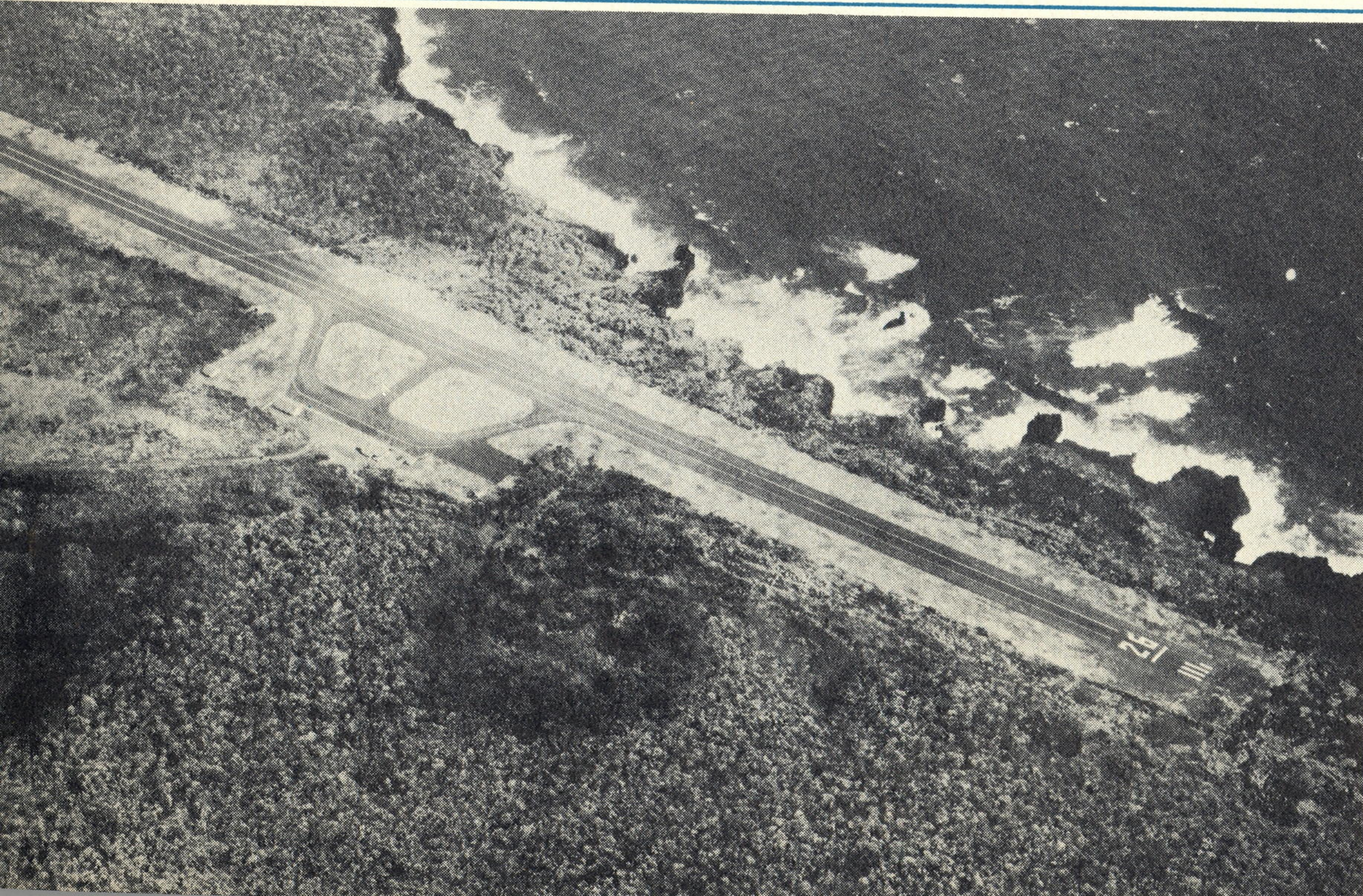
3-21 80' x 3700'

	<i>This Year</i>	<i>Last Year</i>
Air Carrier Revenue Operations	3,214	3,006
Passenger Traffic	19,552	18,606
Air Cargo—Pounds	1,382,859	1,410,818
Air Mail—Pounds	12,505	12,332

INITIAL LAND ACQUISITION—1946.....Private Donation

ORIGINAL CONSTRUCTION—1946

Initial Construction of Airstrip by D.P.W. in 1946	\$ 48,556
Paving of Runway and Construction of Taxiway and Apron .....	271,950
Construction of Warm-up Apron .....	28,419
Freight Terminal Building .....	15,709
Water Line .....	1,827



## Hana Airport

4 Miles NW of Hana, Maui  
 Airport Service Type—Secondary

LAND AREA 144 Acres

RUNWAY:

8-26 (Paved) 100' x 3600'

	<i>This Year</i>	<i>Last Year</i>
Air Carrier Revenue Operations	906	916
Passenger Traffic	9,086	8,356
Air Cargo—Pounds	566,292	471,440
Air Mail—Pounds	6,300	5,741

INITIAL LAND ACQUISITION—1950 } Territorial Land  
 ADDITIONAL LAND ACQUIRED—1955 } and  
 Private Donation

ORIGINAL CONSTRUCTION—1946

Construction of Airstrip .....	\$242,718
Paving of Runway and Aprons .....	176,442
Passenger and Freight Terminal Buildings.....	29,065
Miscellaneous Improvements .....	4,800



## Kamuela Airport

1 Mile SW of Kamuela, Hawaii  
Airport Service Type—Trunkline

LAND AREA 91 Acres

### RUNWAY:

4-22 (Paved) 100' x 5200'

	<i>This Year</i>	<i>Last Year</i>
Air Carrier Revenue Operations	1,256	1,292
Passenger Traffic	9,203	8,592
Air Cargo—Pounds	2,425,639	2,330,377
Air Mail—Pounds	2,841	3,177

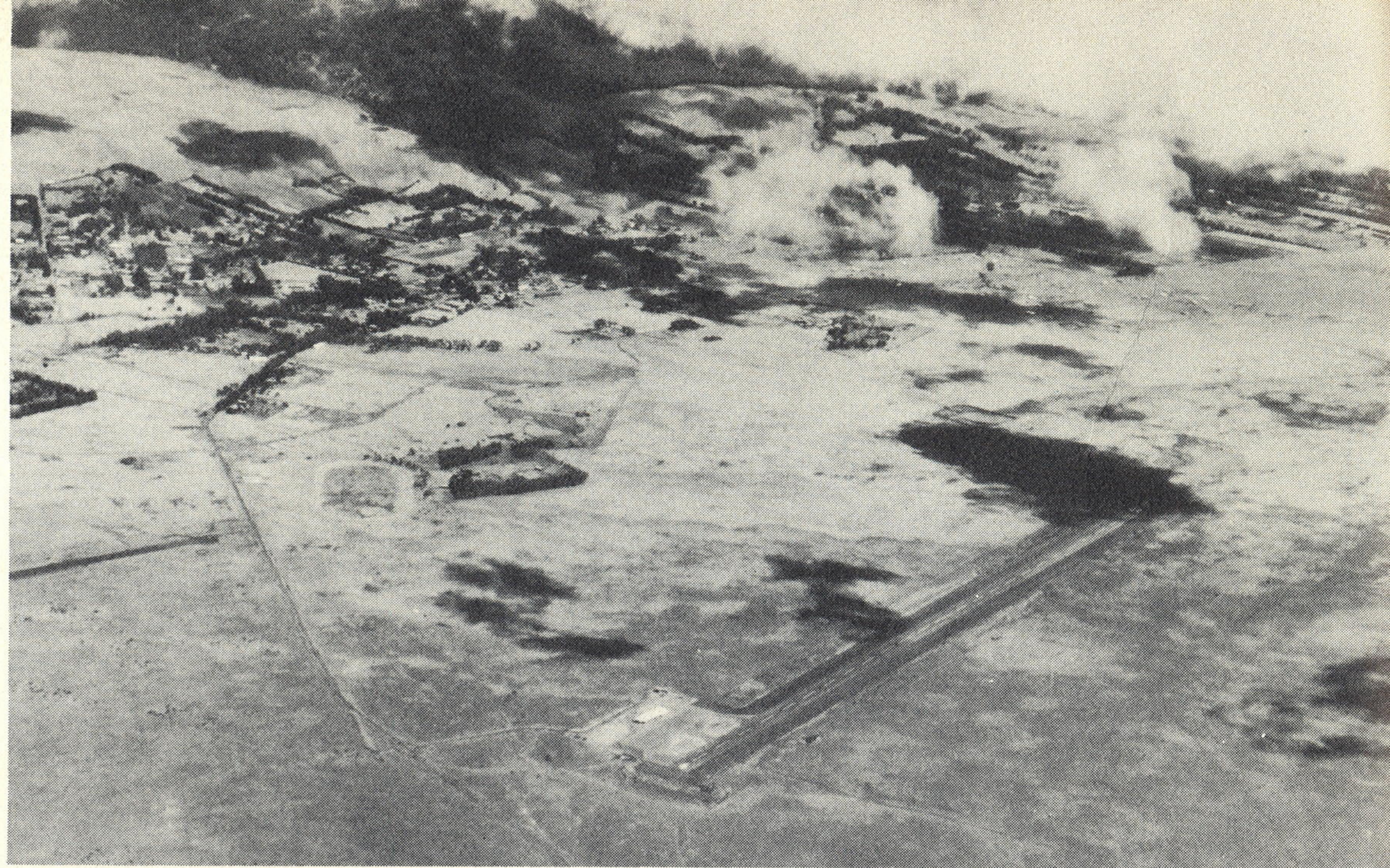
### INITIAL LAND ACQUISITION—1951

Territorial Land and by Purchase ..... \$ 7,000

ADDITIONAL LAND PURCHASE—1955 ..... 10

### ORIGINAL CONSTRUCTION—1952

Construction of Airstrip, Paved Runway, Access Road and Fencing .....	839,301
Passenger and Freight Terminal Building .....	102,813
Medium Intensity Lighting System, Runway 4-22	63,890
Miscellaneous Projects .....	3,459



## Upolu Airport

3 Miles NW of Hawi, Hawaii  
Airport Service Type—Trunkline

LAND AREA 95 Acres

### RUNWAY:

7-25 (Paved) 150' x 4000'

	<i>This Year</i>	<i>Last Year</i>
Air Carrier Revenue Operations	642	554
Passenger Traffic	7,390	6,846
Air Cargo—Pounds	499,133	434,918
Air Mail—Pounds	4,935	2,937

INITIAL LAND ACQUISITION—1928 ..... Territorial Land

### ORIGINAL CONSTRUCTION (1928-1941)

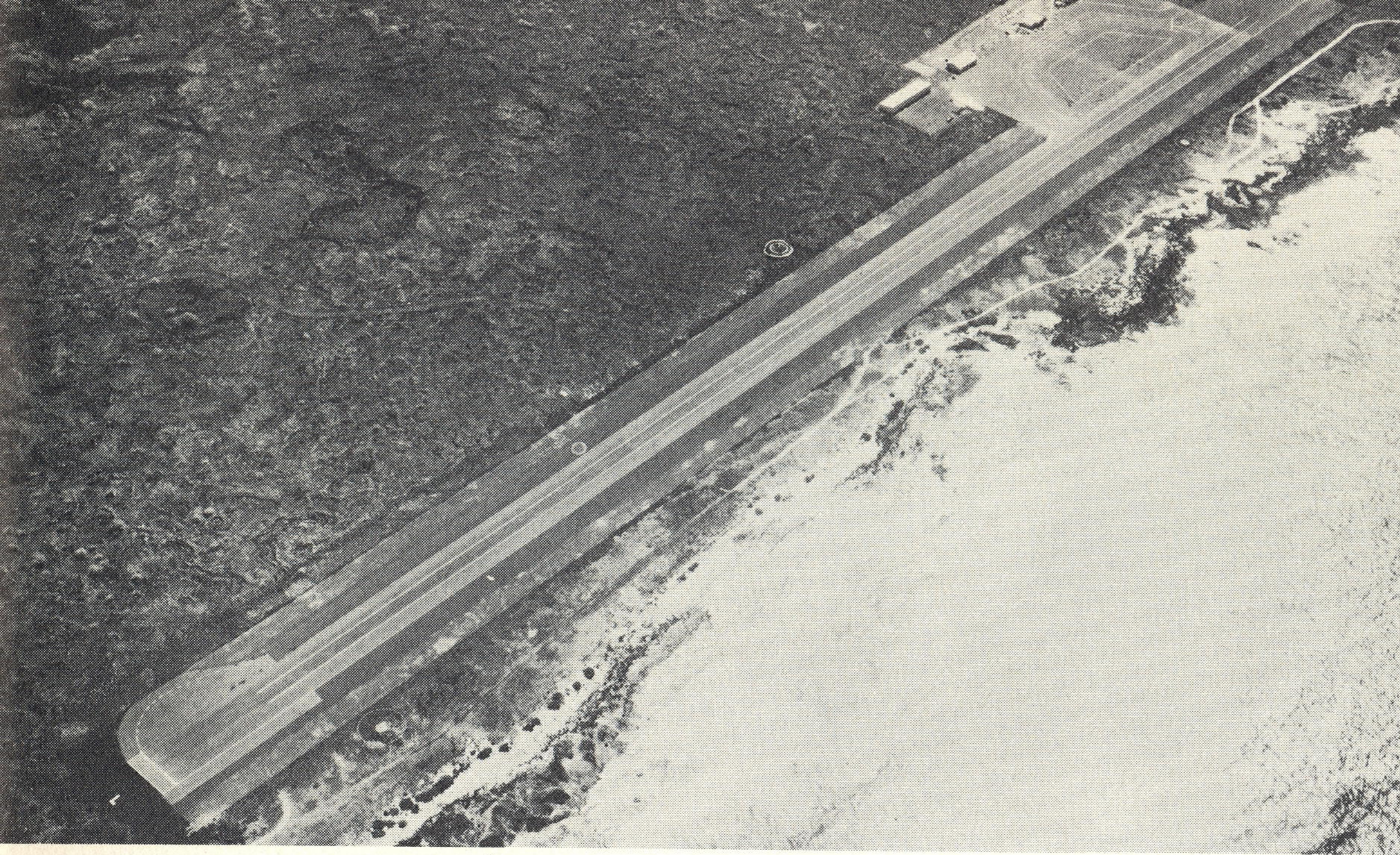
Territorial General Funds .....	\$ 38,619
W.P.A. Funds .....	75,057
C.A.A. National Defense Funds .....	210,000

### POST-WAR IMPROVEMENTS

Passenger Terminal .....	27,433
Resurfacing of Runway and Aircraft Parking Apron .....	54,581







## Kona Airport

1 Mile W of Kailua-Kona, Hawaii  
 Airport Service Type—Secondary

LAND AREA 120 Acres  
 RUNWAY:  
 11-29 (Paved) 100' x 3800'

	<i>This Year</i>	<i>Last Year</i>
Air Carrier Revenue Operations	3,856	4,266
Passenger Traffic	62,953	59,186
Air Cargo—Pounds	1,305,272	1,528,732
Air Mail—Pounds	30,686	29,220

INITIAL LAND ACQUISITION—1948 ..... \$ 11,860

ADDITIONAL LAND PURCHASED—1953 ..... 8,601

ORIGINAL CONSTRUCTION—1948

Construction of Airstrip, Paved Runway, Access Road and Fencing .....	309,150
Additional Taxiway, Parking Aprons and Other Paved Areas .....	177,760
Water System .....	12,000
Passenger Terminal Building .....	34,529
Freight Terminal Building .....	20,137
Small Plane Hangars .....	26,243



## Kipapa Airfield

15 Miles NW of Honolulu, Oahu

LAND AREA 29 Acres

RUNWAY:  
 6-24 (Paved) 100' x 1560'

Private Flying Activity

INITIAL LAND ACQUISITION.....Leased Land

ORIGINAL CONSTRUCTION—1942

U. S. Army



Inter-Island Revenue Passengers. 653,147

From:	To:	HONOLULU	HILO	UPOLU	KAMUELA	KONA	KAHULUI	HANA	MOLOKAI	KALAU-PAPA	LANAI	LIHUE
HONOLULU	285,153		73,626	3,169	3,851	18,206	74,683	4,007	16,778	889	5,350	84,594
HILO	84,363	70,122		18		2	10,825	28	405		231	2,732
UPOLU	3,724	3,350				2	270		42		43	17
KAMUELA	4,779	4,198				2	482		31		9	57
KONA	38,858	31,764			3		1,413	1	49		19	5,609
KAHULUI	102,286	65,316	21,084	398	476	4,532		686	5,163	10	3,413	1,208
HANA	4,347	3,356	4	1		69	905		3			9
MOLOKAI	23,761	16,768	199	34	54	131	5,564	5		306	594	106
KALAU-PAPA	1,261	857					21		376		7	
LANAI	9,804	5,543	120	14	4	3	3,260	2	756	6		96
LIHUE	94,811	89,060	1,628	32	36	1,148	2,716	10	99		82	
TOTALS	653,147	290,334	96,661	3,666	4,424	24,095	100,139	4,739	23,702	1,211	9,748	94,428

Inter-Island Revenue Air Cargo, 21,597,433 pounds

From:	To:	HONOLULU	HILO	UPOLU	KAMUELA	KONA	KAHULUI	HANA	MOLOKAI	KALAU-PAPA	LANAI	LIHUE
HONOLULU	12,216,029		3,333,965	167,621	239,406	721,620	3,194,020	158,118	628,884	410,954	746,924	2,614,517
HILO	2,387,285	2,047,439		160	247	5,262	199,299	4,594	13,570		69,802	46,912
UPOLU	327,130	296,106				131	24,897	11	914		636	4,435
KAMUELA	2,171,986	2,139,007				62	19,371		4,208		459	8,879
KONA	551,114	532,448	175	7	28		7,970	172	3,920		2,104	4,290
KAHULUI	2,156,868	1,424,875	186,060	4,002	11,130	17,731		15,241	54,038	9,000	389,814	44,977
HANA	387,772	380,596	490	36		84	4,922		1,430		148	66
MOLOKAI	316,973	242,310	6,885	58	2,442	6,206	22,892	57		25,513	5,707	4,903
KALAU-PAPA	61,126	61,126										
LANAI	151,707	107,129	6,779	45	232	451	32,540	147	4,305			79
LIHUE	869,443	792,203	38,733	74	168	2,611	18,001	180	1,915		15,558	
TOTALS	21,597,433	8,023,239	3,573,087	172,003	253,653	754,158	3,523,912	178,520	713,184	445,467	1,231,152	2,729,058



# and Air Mail Traffic Summary

to June 30, 1957

## Inter-Island Revenue Air Mail, 849,857 pounds

From:	To:	HONOLULU	HILO	UPOLU	KAMUELA	KONA	KAHULUI	HANA	MOLOKAI	KALAU-PAPA	LANAI	LIHUE
HONOLULU	416,311		159,292	814	482	15,891	105,257	2,855	14,303	28,795	6,739	81,883
HILO	246,683	246,228					125		40			290
UPOLU	3,991	3,973					18					
KAMUELA	2,354	2,354										
KONA	14,789	14,789										
KAHULUI	76,279	75,417	43	108	5		634				72	
HANA	2,811	2,811										
MOLOKAI	11,913	11,913										
KALAU-PAPA	9,060	9,060										
LANAI	5,694	5,659					35					
LIHUE	59,972	59,924	22		6	20						
<b>TOTALS</b>	<b>849,857</b>	<b>432,128</b>	<b>159,335</b>	<b>944</b>	<b>487</b>	<b>15,897</b>	<b>105,455</b>	<b>3,489</b>	<b>14,343</b>	<b>28,795</b>	<b>6,811</b>	<b>82,173</b>

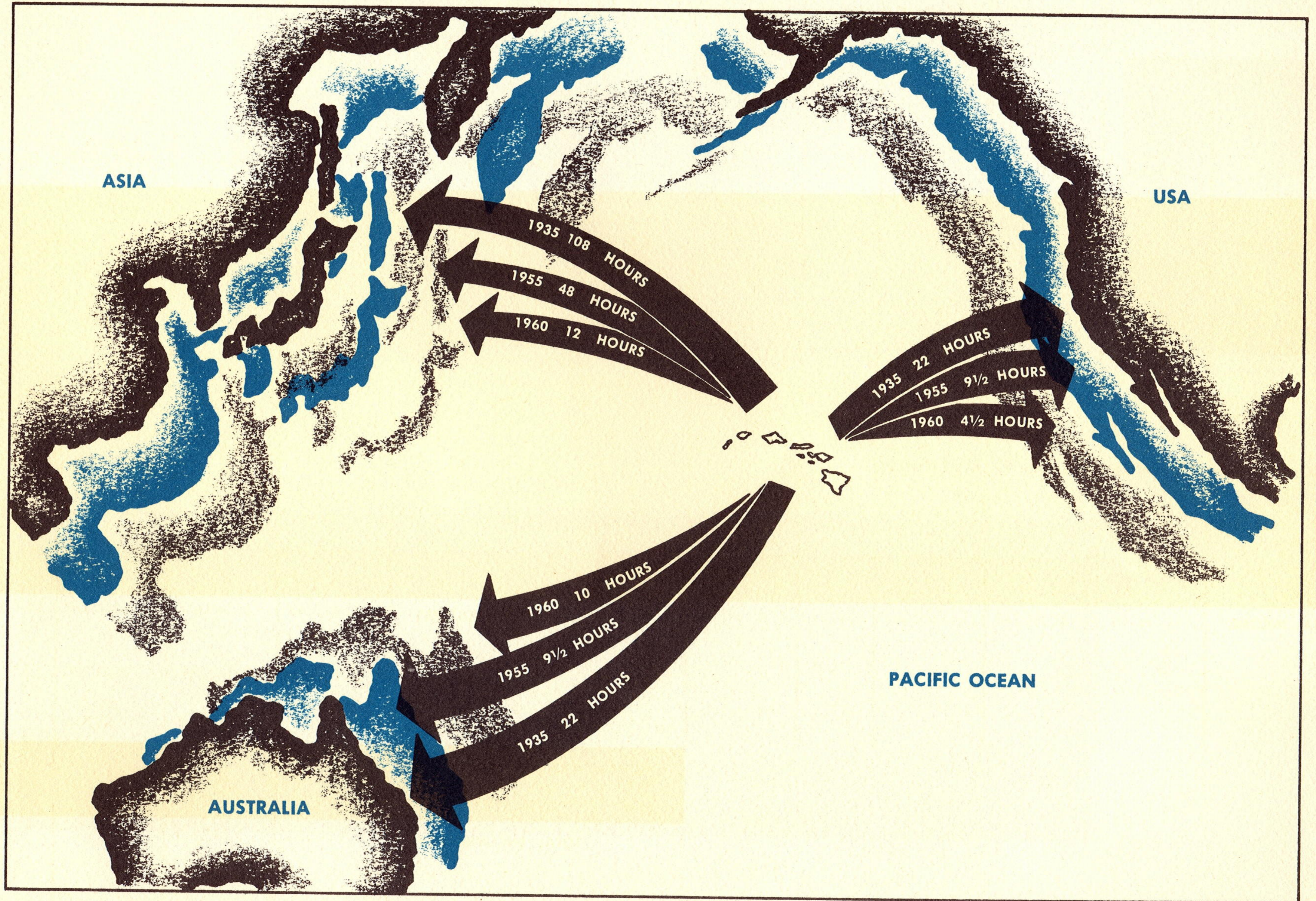
## Inter-Island Revenue Passenger, Cargo, Air Mail Totals

Fiscal Year July 1, 1956 to June 30, 1957

	July	August	September	October	November	December	January	February	March	April	May	June	TOTALS
<b>PASSENGERS</b>	69,608	83,237	55,414	47,152	42,736	48,295	47,434	43,390	46,589	53,510	47,774	68,008	653,147
<b>CARGO (Pounds)</b>	1,935,754	2,055,075	1,782,169	1,886,095	1,594,214	1,868,781	1,593,837	1,548,637	1,751,087	1,768,443	1,935,950	1,877,391	21,597,433
<b>AIR MAIL (Pounds)</b>	55,912	60,114	57,333	63,630	61,403	153,138	65,807	59,281	62,946	72,017	76,255	62,021	849,857



# *Crossroads of the Shrinking Pacific*





# Statement of Income and Expenditures

**FISCAL YEAR 1956-1957**

	Total All Funds	Fuel Tax Fund S-6801	Revenue Fund S-6802	Federal Grants	Bond Fund Appropriation		Total All Funds	Fuel Tax Fund S-6801	Revenue Fund S-6802	Federal Grants	Bond Fund Appropriation
OPENING BALANCE, 7-1-56	\$5,439,939	\$ 601,481	\$113,278	\$166,528	\$4,558,652						
INCOME	Total All Funds	Fuel Tax Fund S-6801	Revenue Fund S-6802	Federal Grants	Bond Fund Appropriation	EXPENDITURES	Total All Funds	Fuel Tax Fund S-6801	Revenue Fund S-6802	Federal Grants	Bond Fund Appropriation
OPERATING INCOME						SURCHARGE EXPENDITURES	84,246	64,533	19,713		
AERONAUTICAL REVENUES						OPERATING EXPENDITURES					
Fuel Tax Collections	1,286,373	1,286,373				Salaries and Wages	616,259	460,728	155,531		
Landing Fees	66,053		66,053			Other Current Expenses	435,853	283,650	152,203		
Rentals of Land, Bldgs., Hangars & Eqpt.	223,787		223,787			Aviation Fuel Purchased for Resale	2,619	1,636	983		
Sale of Aviation Fuel	2,967		2,967			Equipment	53,760	42,680	11,080		
ANCILLARY REVENUES						BOND REDEMPTION PAYMENTS	57,840	354	57,486		
Concession Fees	156,915		156,915			CAPITAL EXPENDITURES					
Parking Meters & Coin Operated Lockers	29,182		29,182			Land, Buildings and Construction Projects	772,770	193,277		412,351	167,142
NON-AERONAUTICAL REVENUES											
Rentals of Land, Bldgs., Equipment	59,425		59,425								
Other Fees and Income	74,115		74,115								
NON-OPERATING INCOME											
Federal Grants Received	245,823			245,823							
Vacation Transfer from other Departments	1,773	1,773									
<b>TOTAL INCOME</b>	<b>\$2,146,413</b>	<b>\$1,288,146</b>	<b>\$612,444</b>	<b>\$245,823</b>		<b>TOTAL EXPENDITURES</b>	<b>\$2,023,347</b>	<b>\$1,046,858</b>	<b>\$396,996</b>	<b>\$412,351</b>	<b>\$ 167,142</b>
						BALANCES	\$5,563,005	\$ 842,769	\$328,726		\$4,391,510
						Mandated Transfer to Salary					
						Increase Fund, Act 2, SSL 1956	298,894		298,894		
						NET CLOSING BALANCES, 6-30-57	5,264,111	842,769	29,832		4,391,510
						ENCUMBRANCES					
						Unliquidated Contract Encumbrances	933,707	435,949			497,758
						Other Construction, Work-in-Progress	4,248,746	354,994			3,893,752
						<b>TOTAL ENCUMBRANCES</b>	<b>5,182,453</b>	<b>790,943</b>			<b>4,391,510</b>
						NET UNENCUMBERED BALANCES, 6-30-57	81,658	51,826	29,832		



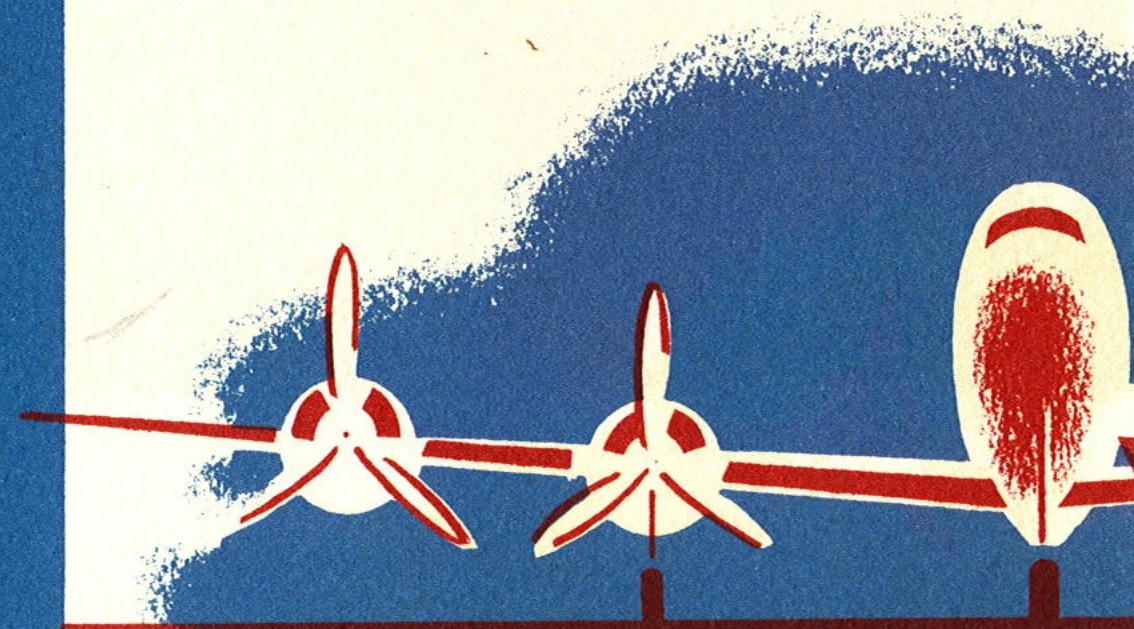
## AIR CARRIER OPERATIONS

1948	87,050	(Inter-Island 80,350—Overseas 6,700)
1949	80,202	(Inter-Island 72,956—Overseas 7,246)
1950	91,042	(Inter-Island 85,166—Overseas 5,876)
1951	91,820	(Inter-Island 86,406—Overseas 5,414)
1952	104,744	(Inter-Island 100,350—Overseas 4,394)
1953	108,846	(Inter-Island 103,230—Overseas 5,616)
1954	97,104	(Inter-Island 90,116—Overseas 6,988)
1955	96,654	(Inter-Island 87,946—Overseas 8,708)
1956	100,240	(Inter-Island 89,954—Overseas 10,286)
1957	100,918	(Inter-Island 88,412—Overseas 12,506)

## PASSENGERS

1948	889,574	(Inter-Island 784,076—Overseas 105,498)
1949	890,588	(Inter-Island 770,380—Overseas 120,208)
1950	955,302	(Inter-Island 840,364—Overseas 114,938)
1951	1,021,987	(Inter-Island 896,748—Overseas 125,239)
1952	1,192,332	(Inter-Island 1,038,734—Overseas 153,598)
1953	1,291,717	(Inter-Island 1,109,122—Overseas 182,595)
1954	1,346,366	(Inter-Island 1,140,526—Overseas 205,840)
1955	1,429,453	(Inter-Island 1,174,032—Overseas 255,421)
1956	1,578,000	(Inter-Island 1,255,250—Overseas 322,750)
1957	1,681,690	(Inter-Island 1,306,294—Overseas 375,396)

*Comparative Traffic Volume*





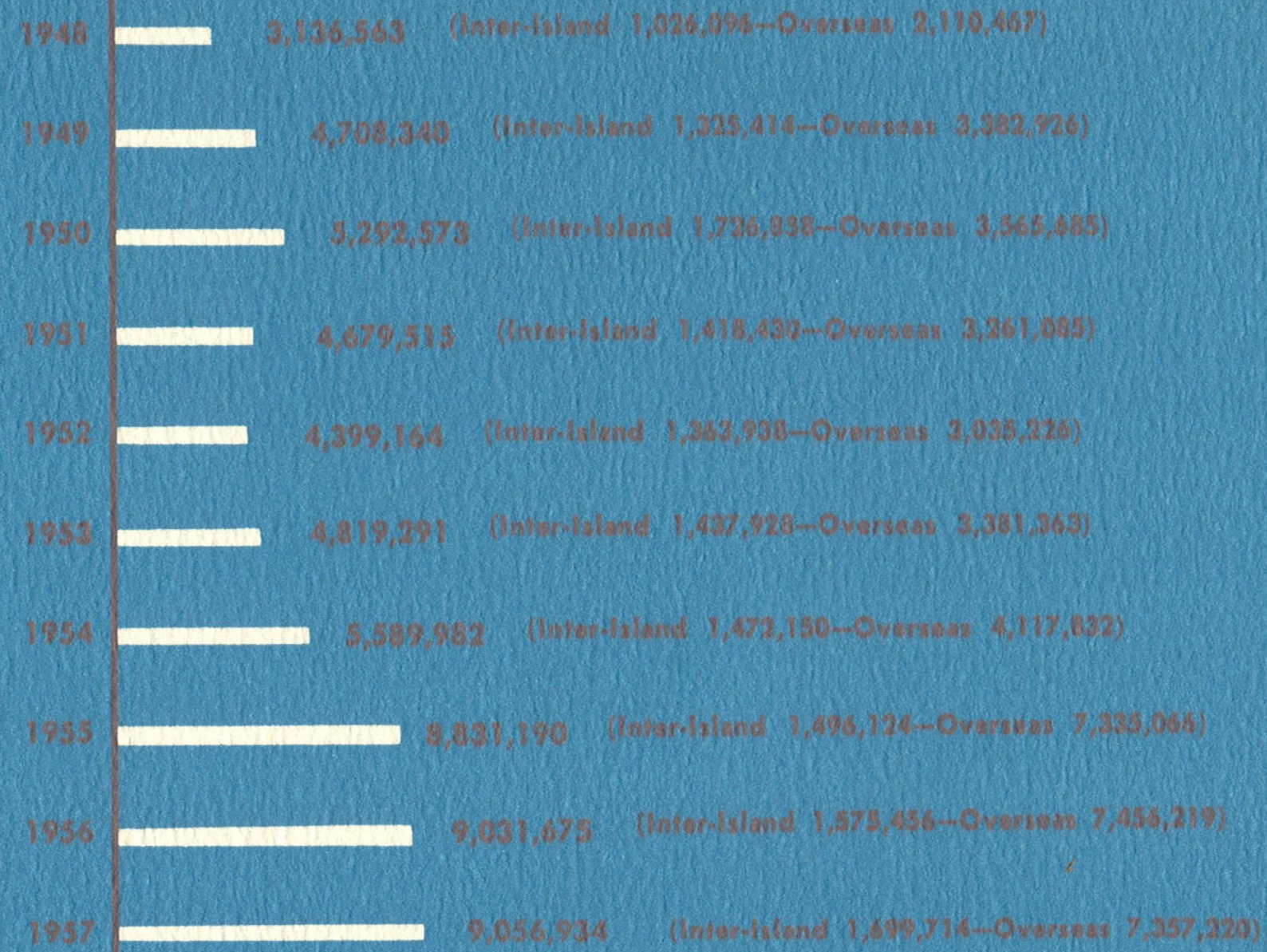
me Handled by All Airports

# Trends



## AIR MAIL

(POUNDS)

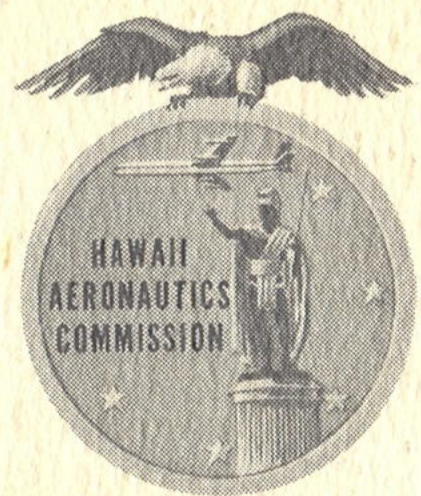


## AIR CARGO

(POUNDS)







H A W A I I   A E R O N A U T I C S   C O M M I S S I O N