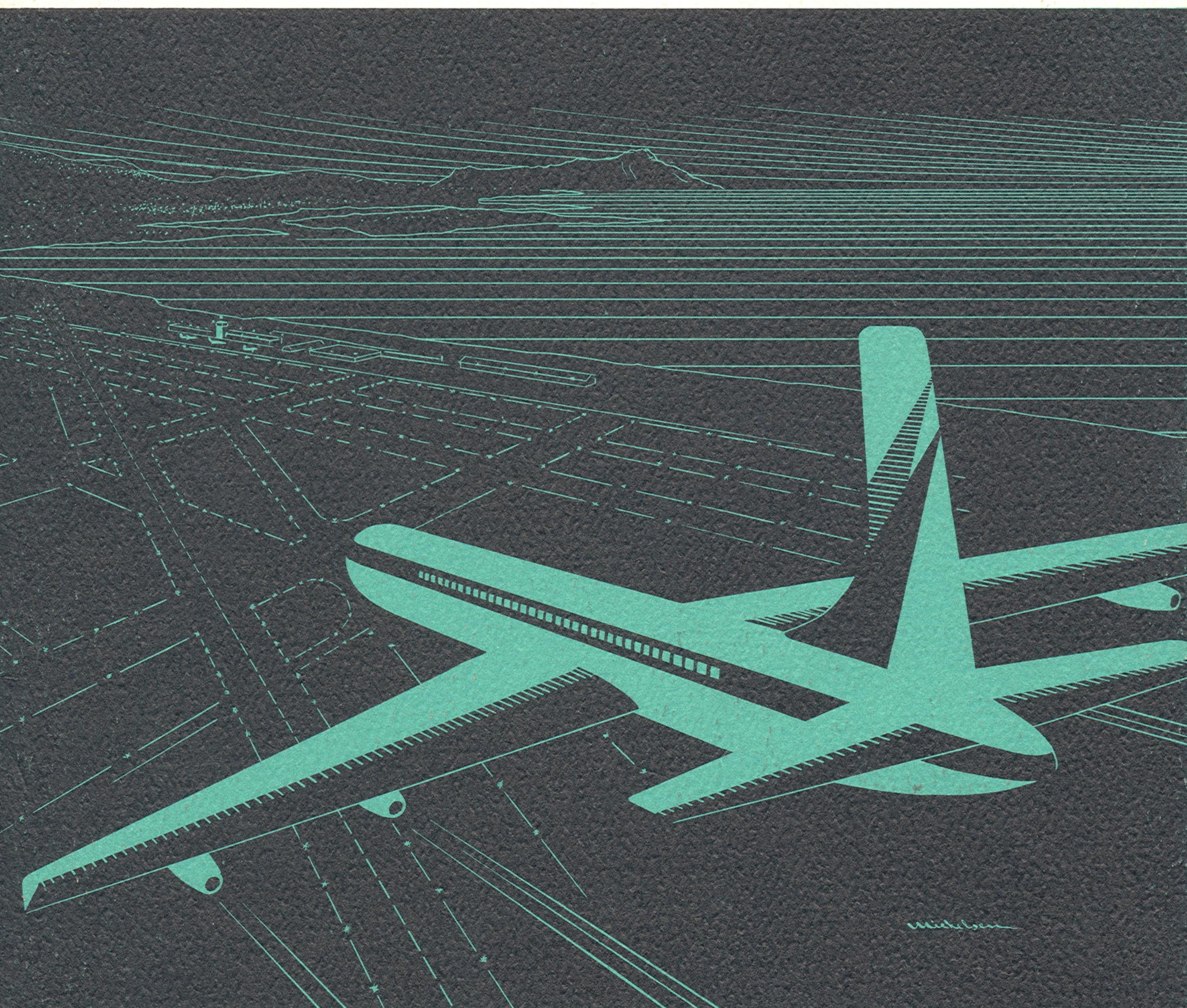




**HAWAII AERONAUTICS  
COMMISSION**

*Annual Report*



**1 9 5 8**



# *Annual Report*

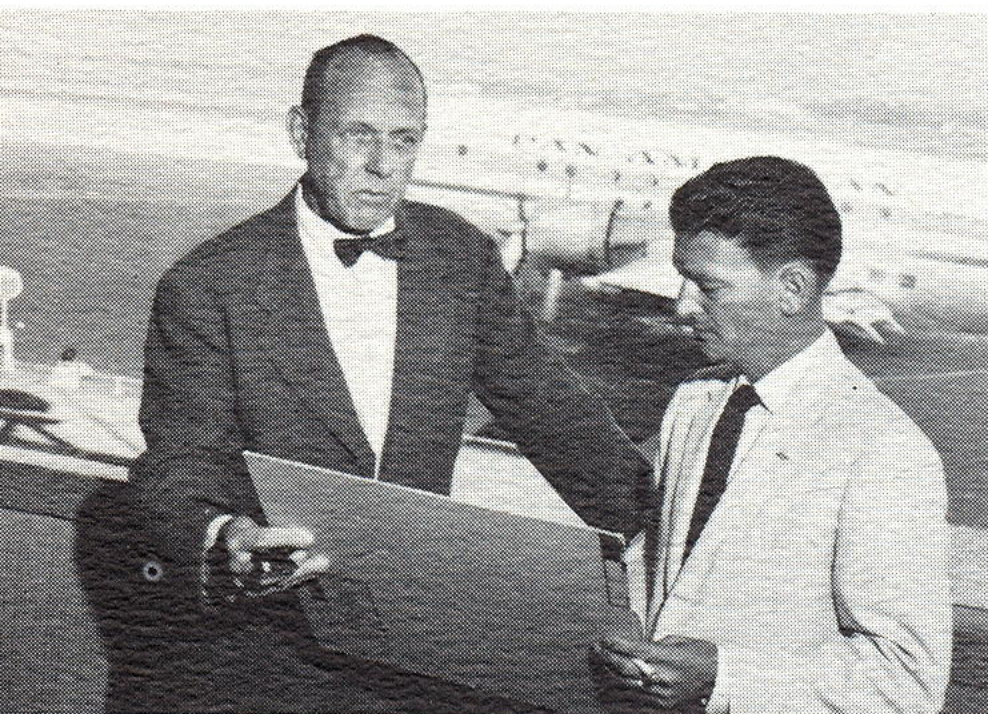
## **HAWAII AERONAUTICS COMMISSION**

FOR THE FISCAL YEAR 1957-1958



2ND FLOOR • OVERSEAS TERMINAL BLDG • HONOLULU INTERNATIONAL AIRPORT





**EXECUTIVE OFFICERS**

A. P. STORRS  
*Director of Aeronautics*

R. M. WALTON  
*Assistant Director of Aeronautics*

**ADMINISTRATIVE STAFF**

MARK E. MARTIN  
*Airport Manager  
Honolulu International Airport*

GILBERT LIVINGSTON  
*Assistant Airport Manager  
Honolulu International Airport*

CHARLES W. DAHLBERG  
*Airport Manager  
Hawaii County Airports*

WILLIAM NEILSON  
*Airport Manager  
Maui County Airports*

COIN E. PERIN  
*Airport Manager  
Kauai County Airports*

BO TONG WAT  
*Finance Executive*

**COMMISSIONERS**

FRANCIS K. SYLVA *Chairman—Oahu*

DORSEY W. EDWARDS *Vice Chairman—Kauai*

RALPH C. HONDA *Secretary—Oahu*

DAVID FURTADO *Vice Secretary—Hawaii*

JOSEPH V. HODGSON *Member—Oahu*

EMORY B. BRONTE *Member—Oahu*

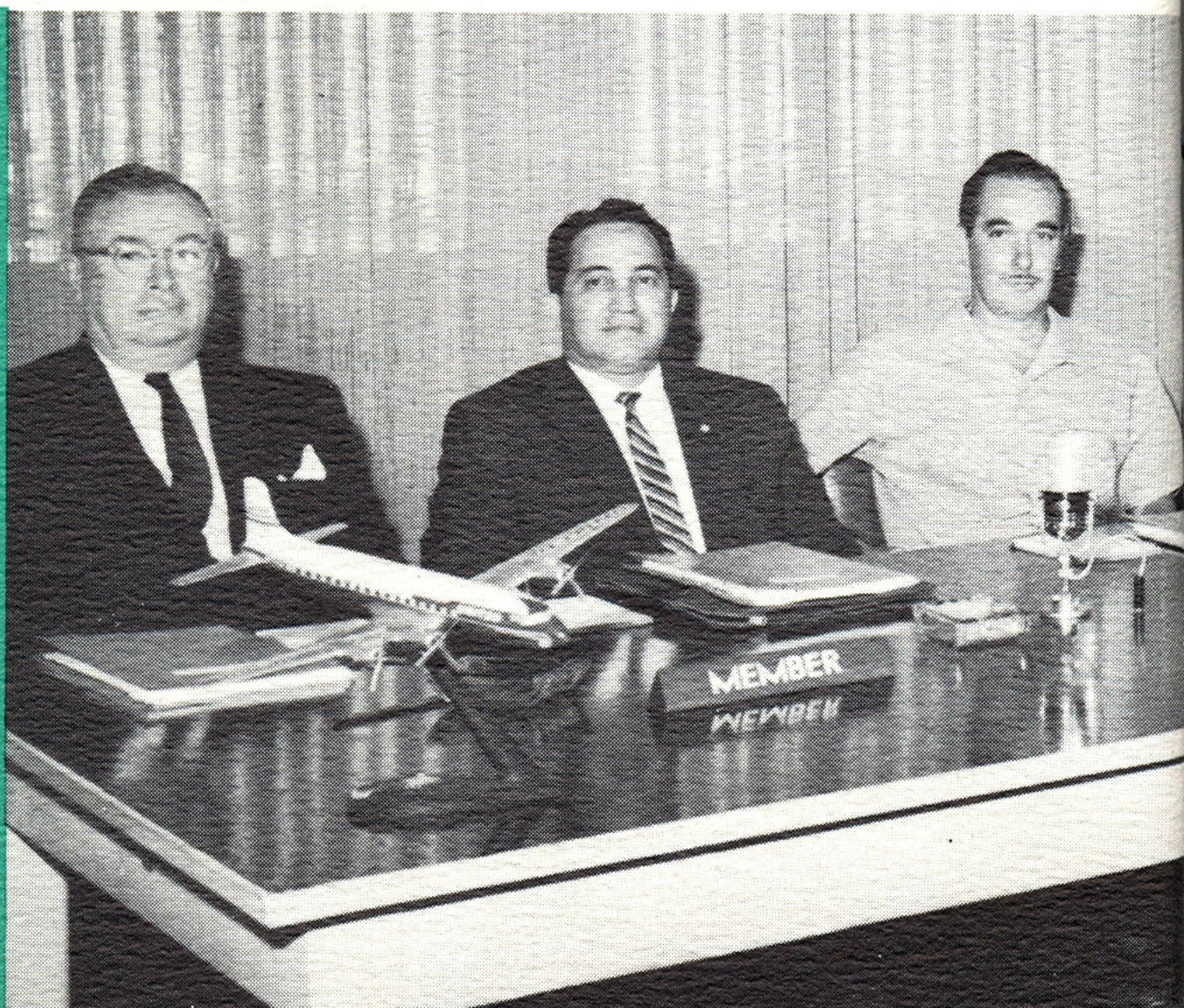
CHARLES J. PIETSCH, JR. *Member—Oahu*

JOSEPH R. ITAGAKI *(from May 6, 1958)  
Member—Oahu*

LIONEL V. DUPONTE *Member—Maui*

GEORGE Y. KOBAYASHI *(Until April 18, 1958)  
Member—Oahu*

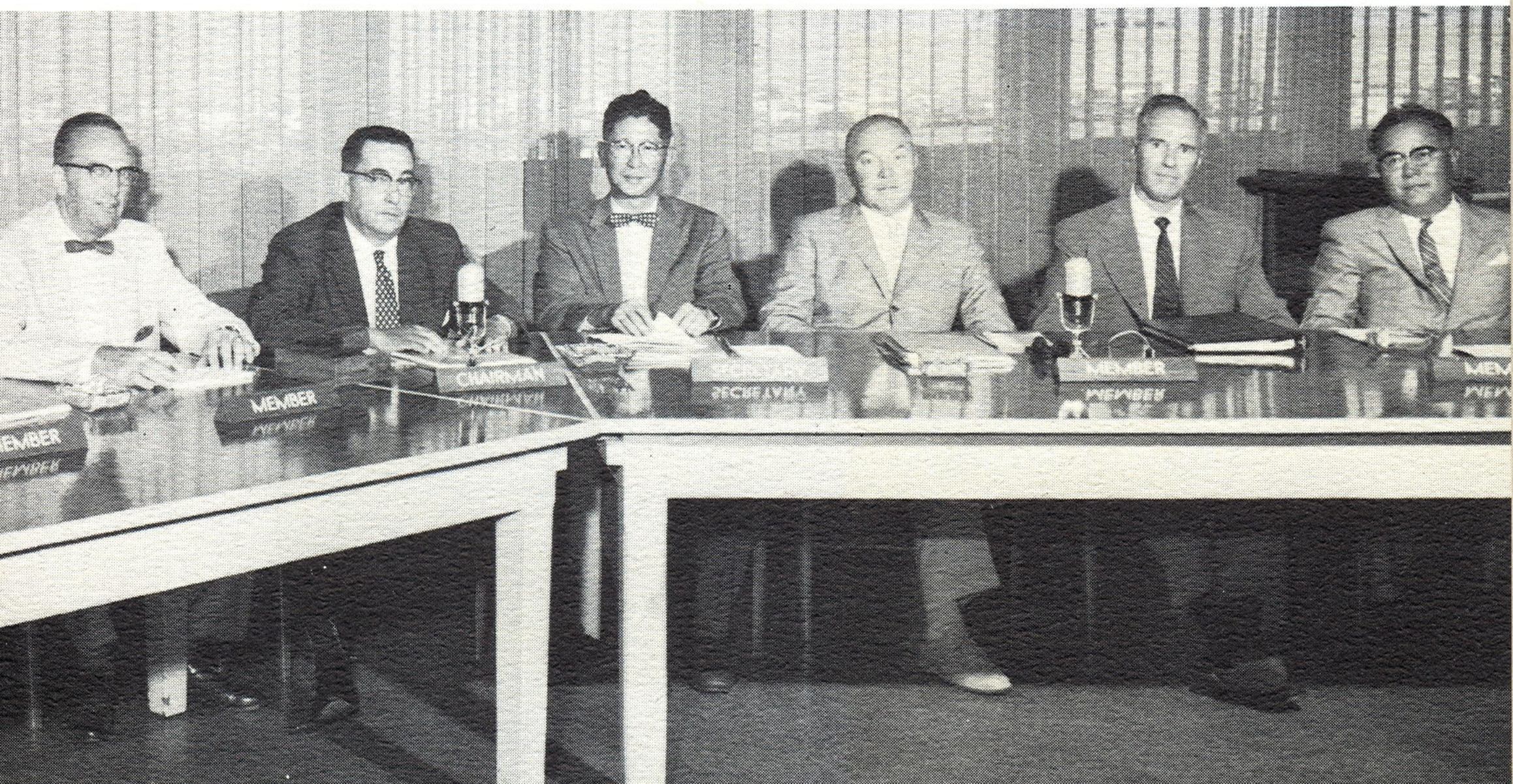
LEFT TO RIGHT  
*Joseph V. Hodgson  
Lionel V. Duponte  
David Furtado  
Dorsey W. Edwards  
Francis K. Sylva  
Ralph C. Honda  
Charles J. Pietsch, Jr.  
Emory B. Bronte  
Joseph R. Itagaki*





## CONTENTS

<i>Report to the Governor</i> . . . . .	4
<i>Foreign Arrivals</i> . . . . .	7
<i>Strange Cargo</i> . . . . .	8
<i>Civil Air Patrol</i> . . . . .	10
<i>Crop Dusting</i> . . . . .	11
<i>Jet-Age Airport Construction Schedule</i> . . . . .	12
<i>Aircraft Operations Summary</i> . . . . .	14
<i>Honolulu International Airport Traffic Summary</i> . . . . .	15
<i>Territorial Airport System</i> . . . . .	16
<i>Territorial Airport System Traffic Summary</i> . . . . .	20
<i>Financial Statement</i> . . . . .	22





## REPORT TO THE GOVERNOR

Honorable William F. Quinn  
Governor of Hawaii  
Iolani Palace  
Honolulu, T. H.

Dear Sir:

Submitted herewith is the report of the Hawaii Aeronautics Commission for the fiscal year ended June 30, 1958.

The Territory was awarded possession of 67.288 acres of Damon Tract land required by the Hawaii Aeronautics Commission for the site of the proposed terminal building and allied facilities at Honolulu International Airport. The land parcel, located on the north side of the airport, was condemned by the Commission through eminent domain proceedings and the amount to be paid as just compensation will be determined by a jury trial in the Circuit Court. The Commission has on deposit with the clerk of the court the sum of \$3,586,000 as fair valuation for the land.

Earlier, the Territory and the Federal government exchanged land parcels whereby the Territory was granted 25-year leases for 248 acres required for the master plan development of the jet-age airport. In return, the Territory granted 25-year leases on 172 acres of land and 344 acres of submerged land to the Federal government for naval aviation purposes.

In preparation for the construction of the proposed terminal building, allied facilities and master plan development of Honolulu

*Hon. William F. Quinn  
Governor of Hawaii*





International Airport, which is expected to start during the latter part of 1958, the Commission engaged the services of Eastman Dillon Union Securities & Co. to handle the marketing of the \$14,000,000 aviation revenue bond issue, authorized by Joint Resolution 32, Session Laws of Hawaii 1957. But before the Commission can proceed with the sale of the bonds, Congressional authorization is required in order to exclude the bonds from the limitation imposed by the Organic Act upon the general obligation bond indebtedness of the Territory. This is being accomplished by a Congressional bill authorizing the issuance of aviation revenue bonds, the aforementioned land exchange and leasing of land to air carriers for 55 years. This bill has already been approved by the House of Representatives and is now awaiting Senate approval before being transmitted to the President for his signature. (At the writing of this report, the bill passed the Senate and has been approved by the President as P. L. 85-534.)

The Commission also engaged the services of Quinton Engineers to conduct an engineering feasibility study to determine the adequacy of the specifications of the proposed terminal building, allied facilities and the over-all airport development project to accomplish the intended purpose and to analyze the cost estimates for the master plan development of the airport. This study has been completed and a formal report presented to the Commission.

An economic feasibility study to determine the adequacy of estimated net revenue from the aviation fuel tax and the operation of the Territorial airport system to repay the proposed bond issue is now being conducted for the Commission by Coverdale & Colpitts, consulting engineers.

The engineering feasibility and economic feasibility studies were requested by Eastman Dillon Union Securities & Co. and the reports will be used in connection with the sale of the aviation revenue bonds.

The firm of Wood, King & Dawson, attorneys and counsellors at law, has been engaged by the Commission to act as bond counsel and provide legal advice in the marketing of the bonds.

Lockheed Air Terminal, Inc., airport consultant, prepared a schedule of rates and charges to be applied to the new terminal facilities. The Commission adopted the proposed schedule and copies of the rates and charges were sent to all air carriers and tenants so that they could get an idea of what they will be charged for the use of the new terminal facilities.

Other major activities of the Commission were as follows:

**KONA AIRPORT** The Commission held a meeting in Kailua-Kona, Hawaii, to give residents of this community and other interested parties an opportunity to express their views regarding the future status of Kona Airport—whether the runway should be lengthened to accommodate larger aircraft or the airport relocated so that a resort center could be developed to attract more visitors to this district. The consensus of those appearing before the Commission was that the airport runway should be lengthened to pro-



vide better service to the community, and the airport eventually relocated to another site. Following this meeting, the Commission decided to ask the Attorney General's office for an opinion on whether or not all or part of the \$265,000 appropriated by Act 150, Session Laws of Hawaii 1957, for the relocation of Kona Airport could be used for an engineering study for selection of a new site. The Attorney General's office stated that the amount appropriated by this Act could be used for such purpose, and the Commission decided to ask the Territorial Planning Office for a sum not to exceed \$100,000 for the required engineering study.

**MOLOKAI AIRPORT** The new passenger-freight terminal, which was completed in the latter part of the preceding fiscal year, was officially dedicated.

**KAHULUI AIRPORT** The Commission approved contracts for the construction of a TOWAC (control tower and communications) building, and installation of medium intensity runway lighting system.

**LIHUE AIRPORT** The Commission approved contracts awarded for alterations to the terminal building, and addition to the auto parking area.

**GENERAL LYMAN FIELD** The Commission approved the contract awarded for removal of approach zone hazards.

The Commission was advised by the local Civil Aeronautics Administration office that the CAA in Washington, D. C., has released Maui (Puunene) Airport. Release of this airport, which has been closed since December, 1955, will permit the Commission to sell the land and use the proceeds for aeronautical purposes.

Rear Admiral A. P. Storrs, USN-Ret., assumed his duties as director of aeronautics on August 1, 1957.

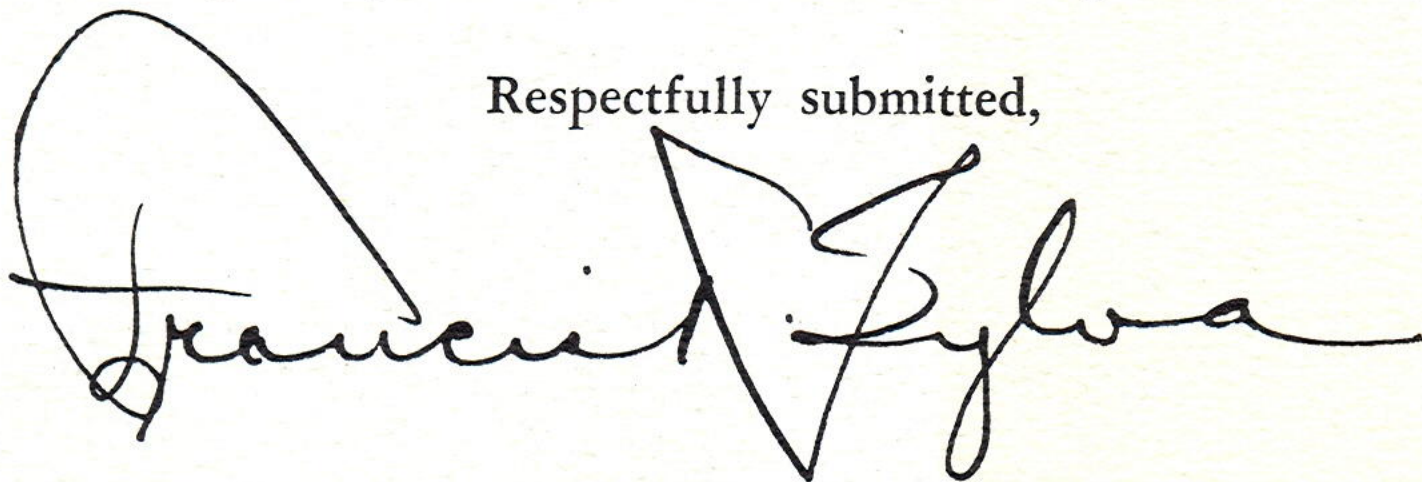
Revenues of the Commission for the fiscal year amounted to \$1,954,069, made up of \$1,376,451 from the aviation fuel tax, \$547,098 from landing fees and other charges, \$1,081 from miscellaneous fees, and \$29,439 from Federal grants. Expenditures amounted to \$1,452,787 for operating expenses, \$57,840 for bond redemption, and \$4,275,755 for improvements and capital projects.

Aircraft operations at Honolulu International Airport totalled 279,515 takeoffs and landings for an increase of 14.1 percent over the preceding fiscal year.

Inter-Island revenue passengers totalled 647,919 for the entire Territorial airport system for a slight decrease of eight-tenths of one percent. The decrease was mainly due to the effects of the recent sugar industry strike which lasted over four months.

Overseas revenue passengers totaled 412,651 for a gain of 9.9 percent.

Respectfully submitted,

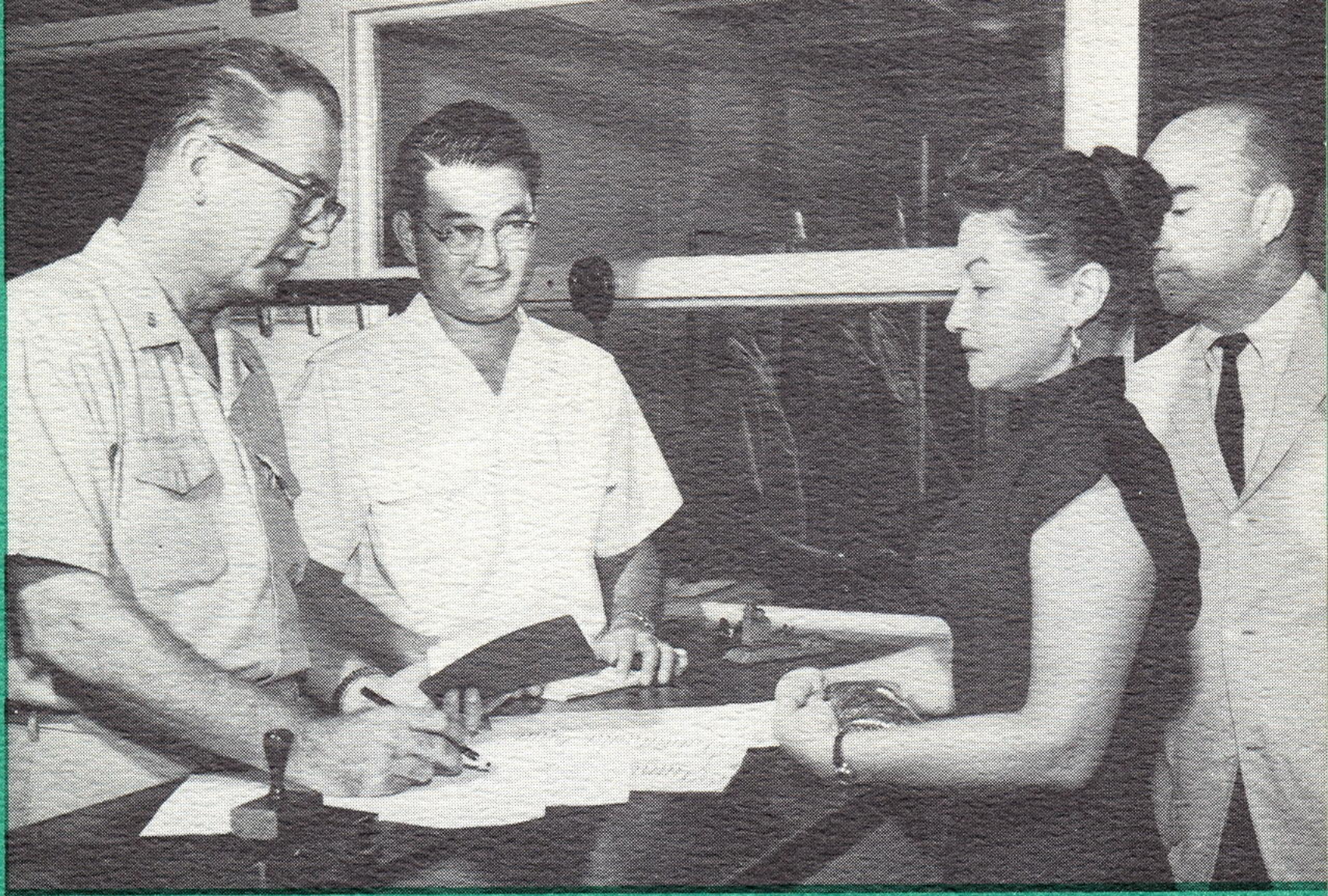
A large, stylized handwritten signature in black ink, reading "Francis K. Sylva". The signature is written in a cursive style with a prominent loop at the beginning and a sharp peak at the end.

Francis K. Sylva, Chairman  
Hawaii Aeronautics Commission

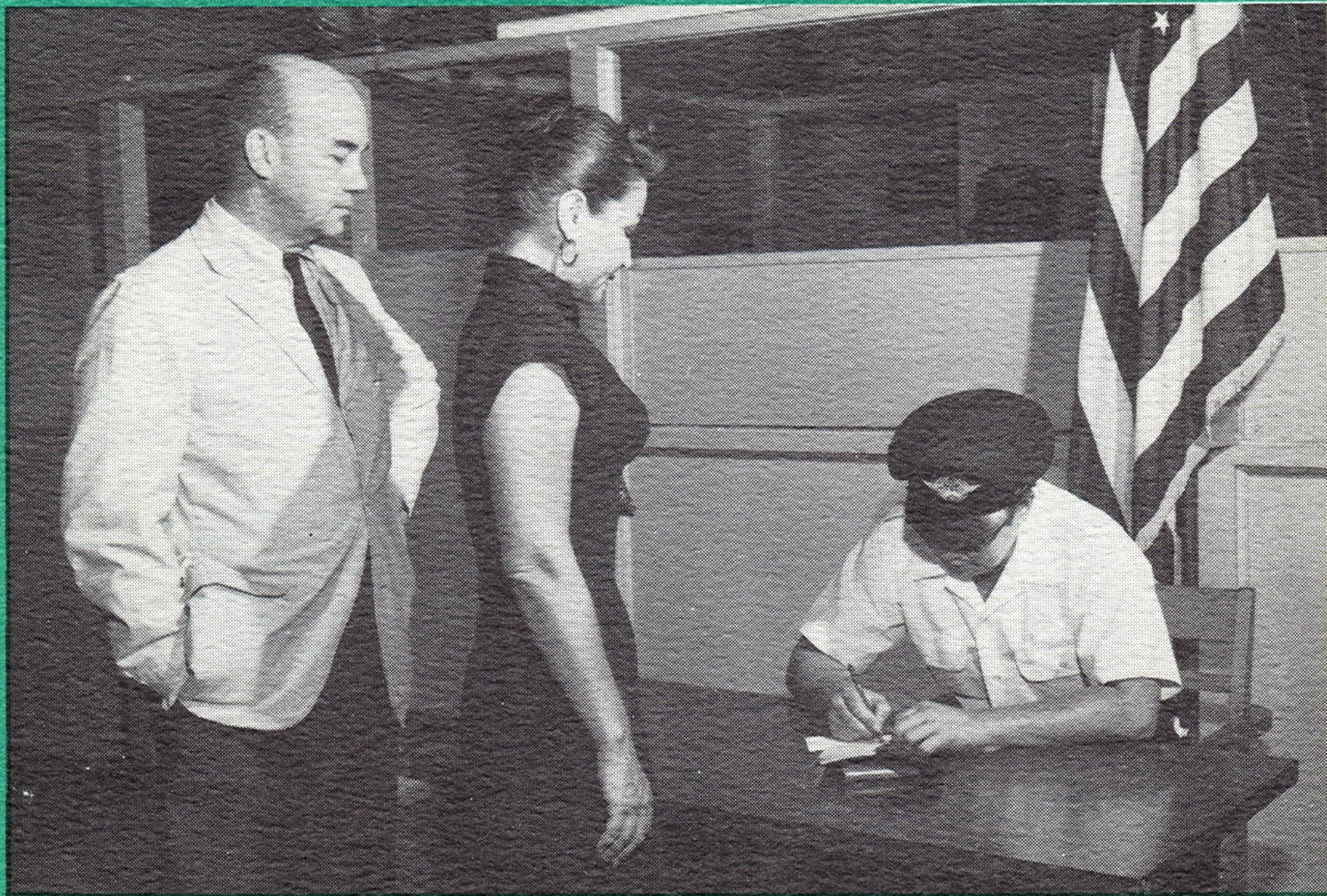


# FOREIGN ARRIVALS

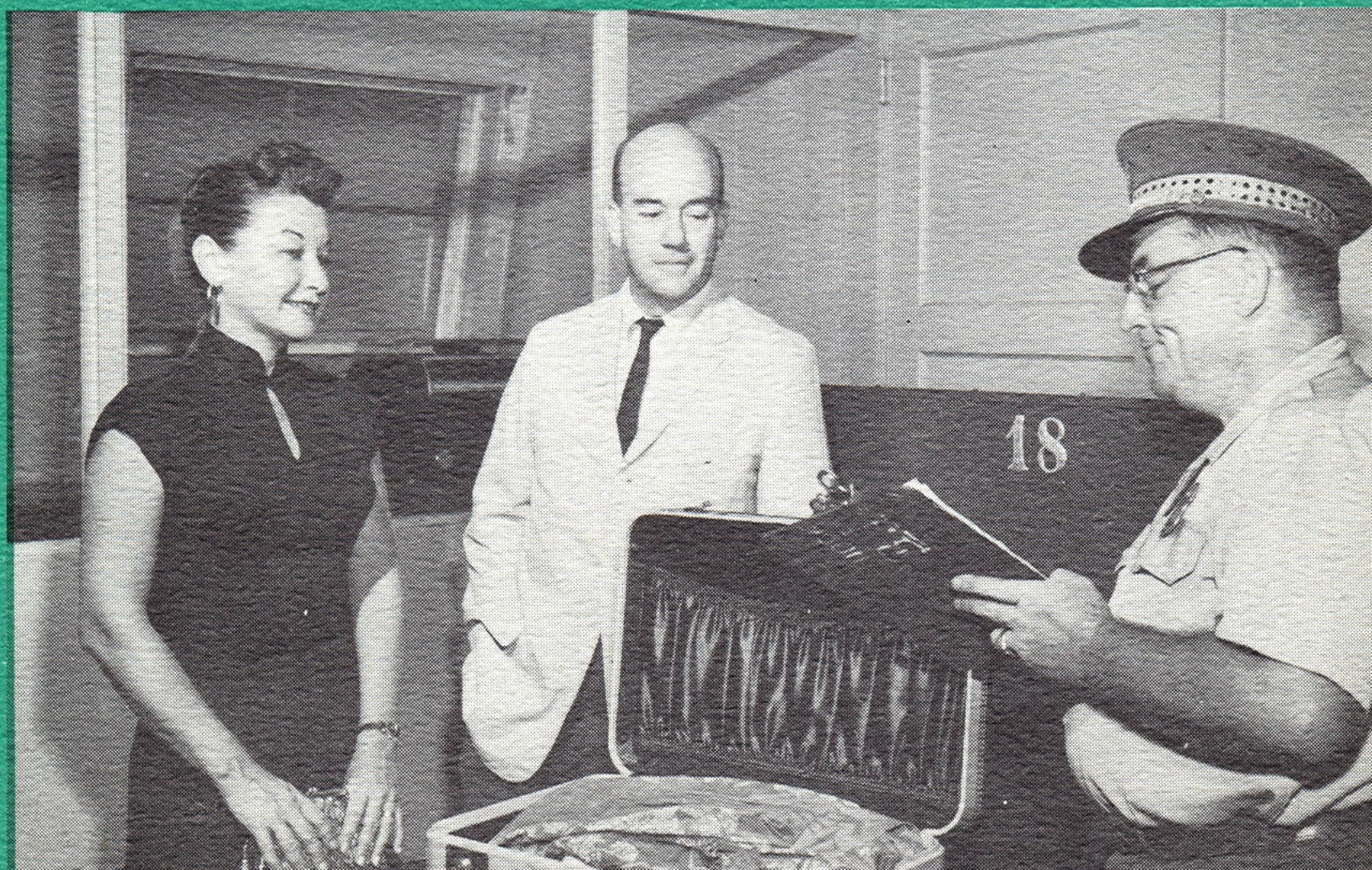
*First stop is  
United States  
Public Health  
Service*



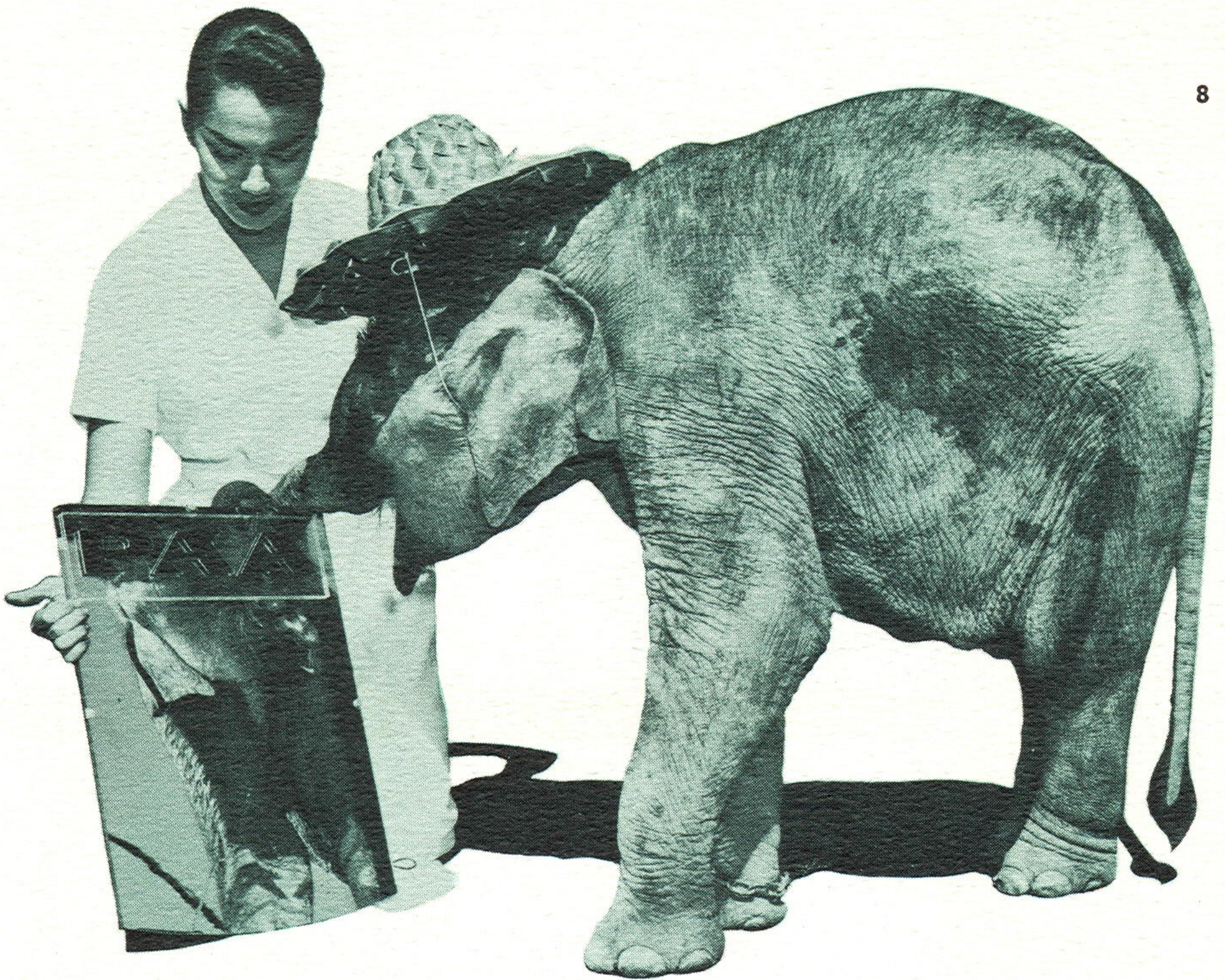
*Passports are  
checked at  
United States  
Immigration*



*Baggage is  
inspected by  
United States  
Customs*







*Barbara Kelai of the Honolulu Pan American Airways staff holds mirror for primping purposes of a baby elephant who arrived via Pan American Airways Clipper Cargo from Singapore enroute to a mainland zoo.*

*A Honolulu Pan American Airways Clipper Cargo employee administers to a simian passenger who stopped over in Honolulu enroute from Singapore.*

*The internationally famous shipment of the duck-billed platypus from Australia to the United States.*

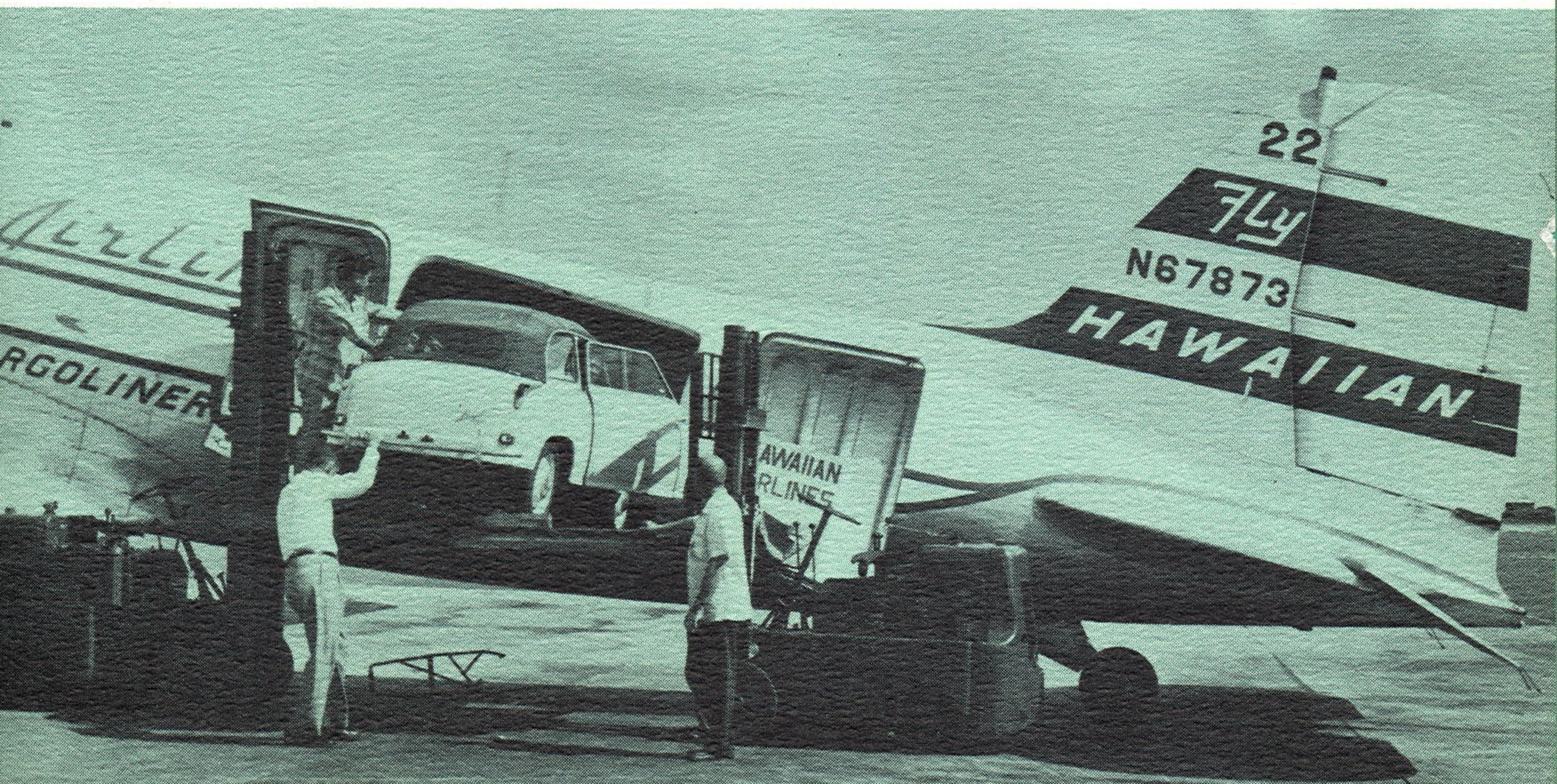




*Kanga, eight month old kangaroo mascot of a group of 80 Australian Lions International club members who arrived from Sydney via Pan American StratoClipper for a brief stopover before continuing to San Francisco. Kanga is shown here with Jim Richardson, Lions immediate past district governor for Australia, and Elizabeth Sturgeon, Pan Am Honolulu employee.*



*Passenger car being loaded for shipment to Hilo on Hawaiian Airlines Cargoliner*







## CIVIL AIR PATROL

Under Section 15-11 of the Revised Laws of Hawaii, 1955, the sum of \$15,000 from the Airport Revenue Fund was mandated by the Territorial Legislature to go to the Civil Air Patrol annually.

The CAP makes good use of this and other funds as evidenced by the accompanying photographs.

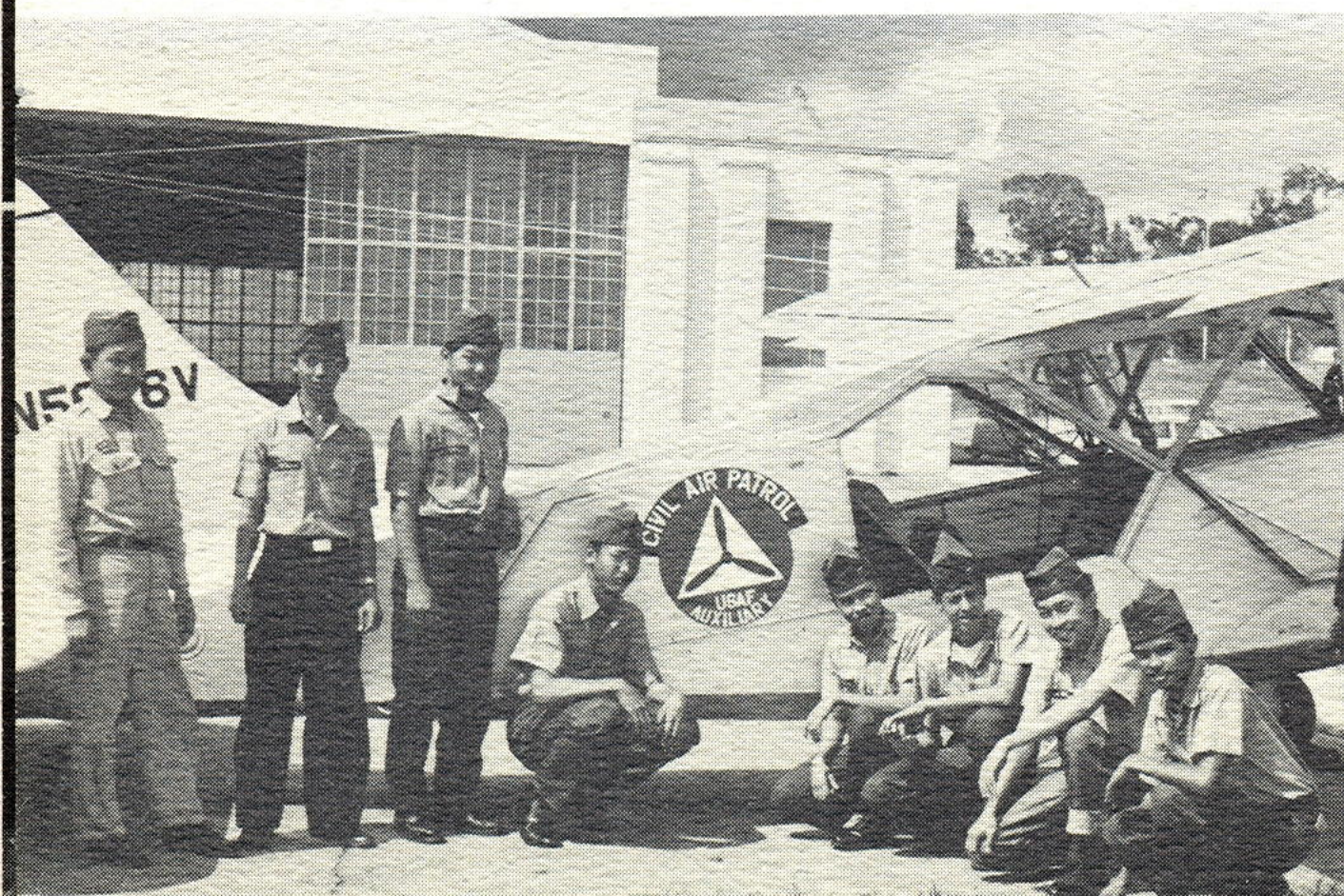
The Hawaii Wing is especially proud of their drill team for winning the International Championship at Toronto, Canada.



FROM TOP TO BOTTOM

*A CAP cadet is given orientation ride in an Air Force jet*

*1957 Hawaii Wing, Cadet Drill Team arriving home after winning the International Championship at Toronto, Canada.*



*Waipahu Squadron cadets before taking orientation flights at Wheeler Field.*



## CROP DUSTING



The chief use of the agriculture airplane in Hawaii is applying fertilizer on sugar cane and pineapple crops. Considerable work is being done with weed spray and insecticides.

Approximately 20 agriculture planes are operating from 20 plantation strips throughout the Territory.



# HONOLULU INTERNATIONAL AIRPORT

Site Preparation, New Terminal Building  
Design and Construction Schedule



With acquisition of necessary land areas accomplished by a land exchange agreement between the Federal government and the Territory and by condemnation of private land, site preparation and construction of the new terminal building for Honolulu International Airport are expected to make headway according to the timetables at right:

## SITE PREPARATION

Preliminary Plans	Plans being reviewed with working drawings
Final Plans	August 1958
HAC Approval of Plans	August 1958
CAA Approval of Plans	August 1958
Project Application	September 1958
Grant Approval	November 1958
Call for Bids	November 1958
Opening of Bids	December 1958
Start of Work	January 1959
Completion of Work	Correspond with Terminal Building





TERMINAL BUILDING	INTER-ISLAND UNIT	FOREIGN ARRIVALS UNIT	DOMESTIC ARRIVALS UNIT	OVERSEAS DEPARTURE UNIT
Preliminary Plans _____	Completed	Completed	Completed	Completed
Project Application _____	Sept. 1958	Sept. 1958	Sept. 1958	Sept. 1958
Grant Approval _____	Sept. 1958	Sept. 1958	Sept. 1958	Sept. 1958
Final Plans _____	Nov. 1958	Nov. 1958	Dec. 1958	Dec. 1958
HAC Approval of Plans	Nov. 1958	Nov. 1958	Dec. 1958	Dec. 1958
CAA Approval of Plans	Dec. 1958	Dec. 1958	Feb. 1959	Feb. 1959
Call for Bids _____	Feb. 1959	Feb. 1959	Feb. 1959	Feb. 1959
Opening of Bids _____	Mar. 1959	Mar. 1959	Mar. 1959	Mar. 1959
Start of Work _____	Mar. 1959	May 1959	May 1959	May 1959
Completion of Work _____	Apr. 1960	Dec. 1960	Dec. 1960	Dec. 1960
Opening of Terminal _____	June 1960	Feb. 1961	Feb. 1961	Feb. 1961



HONOLULU INTERNATIONAL AIRPORT

# AIRCRAFT OPERATIONS SUMMARY

FISCAL YEAR JULY 1, 1957 TO JUNE 30, 1958

		AIR CARRIERS	CIVILIAN AIRCRAFT	MILITARY AIRCRAFT	TOTAL OPERATIONS
<b>1957</b>	July .....	10,137	2,638	15,527	28,302
	August .....	10,044	2,469	15,586	28,099
	September .....	9,024	2,270	13,907	25,201
	October .....	8,393	2,400	13,446	24,239
	November .....	7,412	2,414	11,300	21,126
	December .....	8,073	1,859	9,353	19,285
<hr/>					
<b>1958</b>	January .....	7,511	2,525	10,890	20,926
	February .....	6,694	2,614	11,204	20,512
	March .....	7,106	3,655	12,517	23,278
	April .....	6,914	3,178	13,050	23,142
	May .....	6,971	3,177	12,365	22,513
	June .....	7,581	3,217	12,094	22,892
	<b>TOTALS</b> .....	<b>95,860</b>	<b>32,416</b>	<b>151,239</b>	<b>279,515</b>
<hr/>					
	Preceding Fiscal Year Totals .....	81,049	24,951	139,046	245,046
	Percent Gain or Loss from Preceding Fiscal Year .....	18.3	29.9	8.8	14.1



HONOLULU INTERNATIONAL AIRPORT

**REVENUE PASSENGER,  
CARGO, AIR MAIL SUMMARY**

FISCAL YEAR JULY 1, 1957 TO JUNE 30, 1958

<u>PASSENGERS</u>	OUTGOING	INCOMING	THROUGH	TOTALS
Inter-Island .....	281,615	286,756	.....	568,371
Overseas .....	169,894	165,366	77,391	412,651
<b>TOTAL</b>	<b>451,509</b>	<b>452,122</b>	<b>77,391</b>	<b>981,022</b>
Preceding Fiscal Year Totals ....	437,104	437,017	76,762	950,883
Percent Gain or Loss from Preceding Fiscal Year .....	3.3	3.5	0.8	3.2
<hr/>				
<u>CARGO</u>	OUTGOING POUNDS	INCOMING POUNDS	THROUGH POUNDS	TOTAL POUNDS
Inter-Island .....	12,350,295	9,186,106	.....	21,536,401
Overseas .....	1,544,207	2,480,264	5,453,499	9,477,970
<b>TOTAL</b>	<b>13,894,502</b>	<b>11,666,370</b>	<b>5,453,499</b>	<b>31,014,371</b>
Preceding Fiscal Year Totals ....	13,668,896	10,166,728	10,081,491	33,917,115
Percent Gain or Loss from Preceding Fiscal Year .....	1.7	14.8	-45.9	-8.6
<hr/>				
<u>AIR MAIL</u>	OUTGOING POUNDS	INCOMING POUNDS	THROUGH POUNDS	TOTAL POUNDS
Inter-Island .....	422,379	430,870	.....	853,249
Overseas .....	2,016,987	2,382,058	3,258,180	7,657,225
<b>TOTAL</b>	<b>2,439,366</b>	<b>2,812,928</b>	<b>3,258,180</b>	<b>8,510,474</b>
Preceding Fiscal Year Totals ....	2,227,319	2,583,885	3,394,455	8,205,659
Percent Gain or Loss from Preceding Fiscal Year .....	9.5	8.9	4.0	3.7



# TERRITORIAL AIRPORT SYSTEM

## ISLAND OF HAWAII

### GENERAL LYMAN FIELD (Hilo Airport)

Location: 2 miles E of Hilo

Elevation: 31 feet

Runways: 8-26 200 ft. x 6,500 ft. — Paved

3-21 150 ft. x 5,600 ft. — Paved

### KAMUELA AIRPORT

Location: 1.2 miles SSW of Kamuela

Elevation: 2,671 feet

Runway: 4-22 100 ft. x 5,200 ft. — Paved

### KONA AIRPORT

Location: 1 mile W of Kona

Elevation: 18 feet

Runway: 11-29 100 ft. x 3,800 ft. — Paved

### UPOLU AIRPORT

Location: 3 miles NW of Hawi

Elevation: 96 feet

Runway: 7-25 150 ft. x 4,000 ft. — Paved

## ISLAND OF LANAI

### LANAI AIRPORT

Location: 4 miles SW of Lanai City

Elevation: 1,315 feet

Runway: 3-21 80 ft. x 3,700 ft. — Paved



## ISLAND OF MAUI

### KAHULUI AIRPORT

Location: 2½ miles E of Kahului

Elevation: 59 feet

Runways: 2-20 200 ft. x 7,000 ft. — Paved

5-23 200 ft. x 5,000 ft. — Paved

17-35 200 ft. x 5,100 ft. — Paved

### HANA AIRPORT

Location: 3 miles NW of Hana

Elevation: 77 feet

Runway: 8-26 100 ft. x 3,600 ft. — Paved

## ISLAND OF MOLOKAI

### MOLOKAI AIRPORT

Location: 6¾ miles NW of Kaunakakai

Elevation: 441 feet

Runways: 5-23 100 ft. x 4,500 ft. — Paved

17-35 100 ft. x 3,100 ft. — Paved

### KALAUPAPA AIRPORT

Location: 1 mile N of Kalaupapa

Elevation: 21 feet

Runway: 5-23 100 ft. x 2,650 ft.

(Paved portion 50 ft. x 1,658 ft.)



## **ISLAND OF OAHU**

### **HONOLULU INTERNATIONAL AIRPORT**

Location: 4 miles WNW of Honolulu

Elevation: 10 feet

Runways: 8-26 200 ft. x 13,104 ft. — Paved

4R-22L 200 ft. x 7,004 ft. — Paved

4L-22R 200 ft. x 6,950 ft. — Paved

Sealanes: 4-22 1,000 ft. x 15,312 ft.

14-32 1,000 ft. x 10,560 ft.

7-25 1,000 ft. x 15,827 ft.

### **KIPAPA AIRFIELD**

Location: 6 miles S of Wahiawa

Elevation: 565 feet

Runway: 6-24 100 ft. x 1,560 ft. — Paved

## **ISLAND OF KAUAI**

### **LIHUE AIRPORT**

Location: 1½ miles E of Lihue

Elevation: 140 feet

Runway: 3-21 100 ft. x 5,100 ft. — Paved

### **PORT ALLEN AIRPORT**

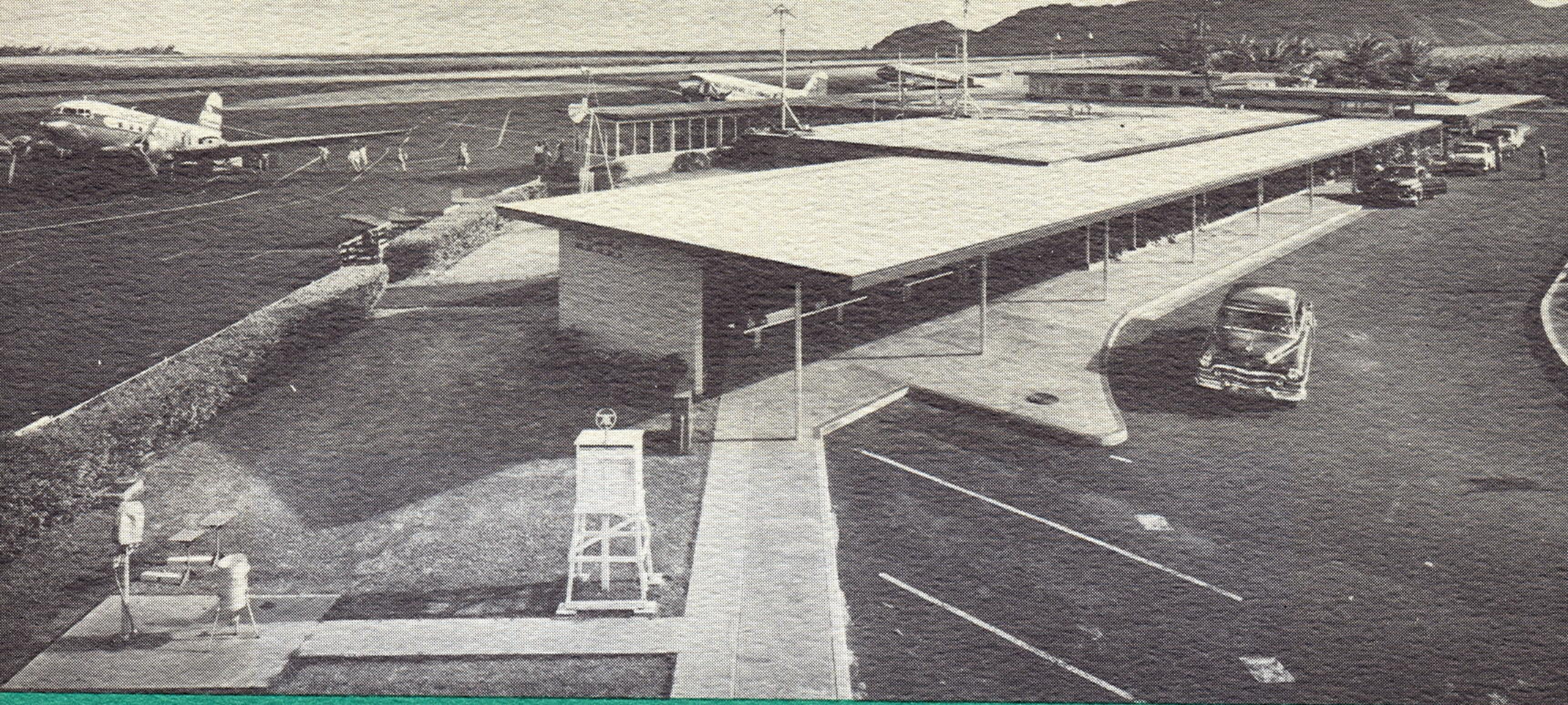
Location: 1 mile SW of Hanapepe

Elevation: 24 feet

Runways: 9-27 60 ft. x 2,500 ft. — Paved

5-23 100 ft. x 2,600 ft. — Unpaved





*Terminal at Libue, Kauai, showing recent alterations.*



*Kabului Airport. New tower under construction in foreground.*



*General Lyman Field, Hilo. Snow-capped Mauna Kea in background.*



# TERRITORIAL AIRPORT SYSTEM TRAFFIC SUMMARY

## INTER-ISLAND REVENUE PASSENGER, CARGO, AIR MAIL SUMMARY

Fiscal Year July 1, 1957  
to June 30, 1958

		PASSENGERS	CARGO POUNDS	AIR MAIL POUNDS
1957	July	76,661	2,185,939	61,304
	Aug.	91,530	2,176,467	64,332
	Sept.	54,861	1,909,511	58,666
	Oct.	50,905	2,058,461	67,724
	Nov.	45,703	1,793,204	63,342
	Dec.	47,843	2,102,185	147,109
1958	Jan.	44,489	1,676,414	58,904
	Feb.	36,399	1,536,598	56,743
	Mar.	38,143	1,844,639	64,840
	April	53,130	1,962,269	71,253
	May	45,748	2,022,749	79,236
	June	62,507	2,096,556	63,907
	<b>TOTALS</b>	<b>647,919</b>	<b>23,364,992</b>	<b>857,360</b>
Preceding Fiscal Year Totals		653,147	21,597,433	849,857
Percent Gain or Loss from Preceding Fiscal Year		-0.8	8.2	0.9

## INTER-ISLAND REVENUE PASSENGER TRAFFIC SUMMARY

Fiscal Year July 1, 1957  
to June 30, 1958

	HONOLULU	HILO	UPOLU	KAMUELA	KONA	KAHULUI	HANA	MOLOKAI	KALAUPAPA	LANAI	LIHUE
From:											
HONOLULU	281,615					72,291	4,072	17,261	930	5,315	82,997
HILO	83,597	72,328			7	10,525	24	319		335	2,817
UPOLU	3,358		2,743		1	362				7	31
KAMUELA	4,471			3,645		376	49	29		11	26
KONA	41,328				3	1,686	74	118		5	6,780
KAHULUI	98,620		362	393	5,350		713	4,709	9	3,133	1,032
HANA	4,757			49		868					32
MOLOKAI	23,807			31	114	5,154			449	695	103
KALAUPAPA	1,525					12				3	
LANAI	9,618		1	7	38	3,057	7	660			71
LIHUE	95,223		28	13	1,712	2,777	93	113		24	
<b>TOTALS</b>	<b>647,919</b>	<b>95,676</b>	<b>3,134</b>	<b>4,141</b>	<b>27,255</b>	<b>97,108</b>	<b>5,032</b>	<b>24,012</b>	<b>1,388</b>	<b>9,528</b>	<b>93,889</b>

Total Inter-Island Revenue Passengers, July 1, 1957 to June 30, 1958—647,919



**INTER-ISLAND REVENUE AIR CARGO  
TRAFFIC SUMMARY (Pounds Carried)**

Fiscal Year July 1, 1957  
to June 30, 1958

	TO:										
	HONOLULU	HILO	UPOLU	KAMUELA	KONA	KAHULUI	HANA	MOLOKAI	KALAUPAPA	LANAI	LIHUE
From:											
HONOLULU	12,350,295	3,309,761	179,419	207,547	600,444	3,202,294	180,192	655,633	363,883	723,203	2,927,919
HILO	3,104,894		62	3,751	1,554	284,049	6,031	16,936		81,787	51,664
UPOLU	293,686					18,605		245		964	5,610
KAMUELA	2,192,670				25	34,874		2,386		13,792	8,420
KONA	610,775	17	66			15,360	215	3,796		1,755	9,976
KAHULUI	2,686,929	284,150	6,123	11,018	33,910	1,431	21,990	89,346	6,600	515,757	58,468
HANA	372,131	25	17	10	47	24,319	74	8		334	18
MOLOKAI	518,569	35,855	1,545	1,599	4,197	70			29,646	11,450	3,812
KALAUPAPA	59,461										
LANAI	170,844	9,946	2,318	1,413	2,221	46,094	71	7,080			12,221
LIHUE	1,004,738	21,476	569	411	1,660	17,112	7	1,844		389	
<b>TOTALS</b>	<b>23,364,992</b>	<b>3,661,230</b>	<b>190,119</b>	<b>225,749</b>	<b>644,058</b>	<b>3,644,138</b>	<b>208,580</b>	<b>777,344</b>	<b>400,129</b>	<b>1,349,431</b>	<b>3,078,108</b>

Total Inter-Island Revenue Air Cargo, July 1, 1957 to June 30, 1958—23,364,992 pounds

**INTER-ISLAND REVENUE AIR MAIL  
TRAFFIC SUMMARY (Pounds Carried)**

Fiscal Year July 1, 1957  
to June 30, 1958

	TO:										
	HONOLULU	HILO	UPOLU	KAMUELA	KONA	KAHULUI	HANA	MOLOKAI	KALAUPAPA	LANAI	LIHUE
From:											
HONOLULU	422,379	162,262	559	861	17,014	108,553	2,619	14,907	27,768	7,258	80,578
HILO	248,935					1,249		4			577
UPOLU	2,982										
KAMUELA	2,180					65					
KONA	14,306									32	45
KAHULUI	76,512	126	18	36	31		514	299			
HANA	3,142					35					
MOLOKAI	12,192					357				447	
KALAUPAPA	8,683										
LANAI	5,729					198		24			
LIHUE	60,320	54									
<b>TOTALS</b>	<b>857,360</b>	<b>162,442</b>	<b>577</b>	<b>897</b>	<b>17,045</b>	<b>110,457</b>	<b>3,133</b>	<b>15,234</b>	<b>27,768</b>	<b>7,737</b>	<b>81,200</b>

Total Inter-Island Revenue Air Mail, July 1, 1957 to June 30, 1958—857,360 pounds.



HAWAII AERONAUTICS COMMISSION

STATEMENT OF RECEIPTS AND EX

	TOTAL ALL FUNDS
OPENING BALANCE, 7/1/57 .....	\$5,264,111
<b>INCOME</b>	
Operating Income	
Aeronautical Revenues	
Fuel Tax Collections.....	1,376,451
Landing Fees .....	70,265
Rentals of Land, Bldgs., Hangars and Eqpt.....	168,114
Sale of Aviation Fuel.....	2,657
Ancillary Revenues	
Concession Fees.....	199,746
Parking Meters and Coin Operated Lockers.....	30,831
Non-Aeronautical Revenues	
Rentals of Land, Bldgs., Equipment.....	42,855
Other Fees and Income.....	32,630
Non-Operating Income	
Federal Grants Received.....	29,439
Vacation Transfers from other Departments.....	1,081
<b>TOTAL INCOME</b> .....	<b>\$1,954,069</b>
<b>EXPENDITURES</b>	
Surcharge Expenditures .....	86,285
Salaries and Wages.....	669,847
Other Current Expenses.....	649,231
Aviation Fuel Purchased for Resale.....	2,404
Equipment .....	45,020
Bond Redemption Payments.....	57,840
Capital Expenditures	
Land, Buildings and Construction Projects.....	4,275,755
<b>TOTAL OPERATING EXPENDITURES</b> .....	<b>\$5,786,382</b>
<b>NET CLOSING BALANCES, 6/30/58</b> .....	<b>\$1,431,798</b>
<b>ENCUMBRANCES</b>	
Unliquidated Contract Encumbrances.....	646,322
Other Construction, Work-in-Progress.....	673,556
	<b>\$1,319,878</b>
<b>NET UNENCUMBERED BALANCES, 6/30/58</b> .....	<b>\$ 111,920</b>

\*Honolulu County Airport  
 †Maui County Airports  
 ‡New Terminal Building, Honolulu International Airport

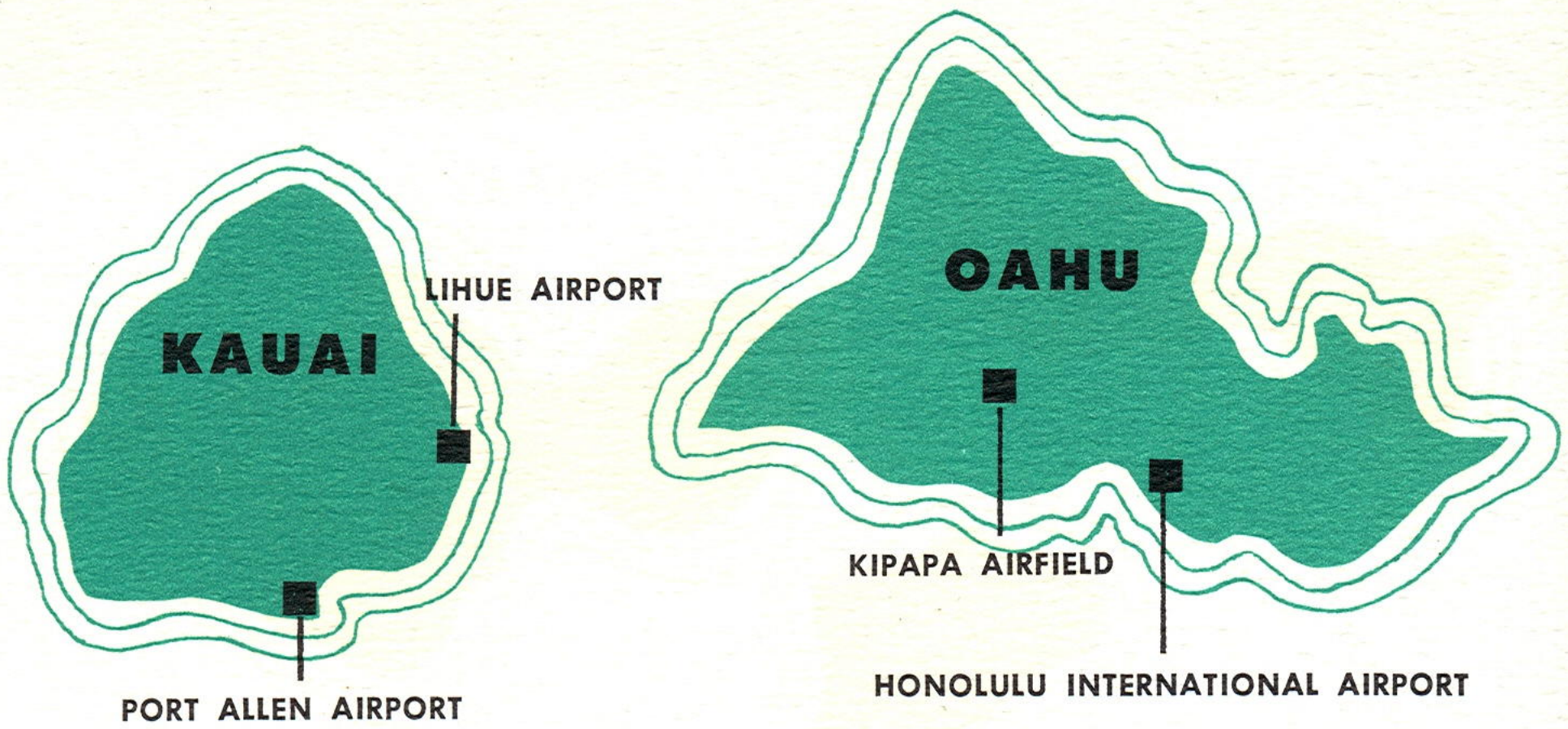


# P E N D I T U R E S

FISCAL YEAR 1957-1958

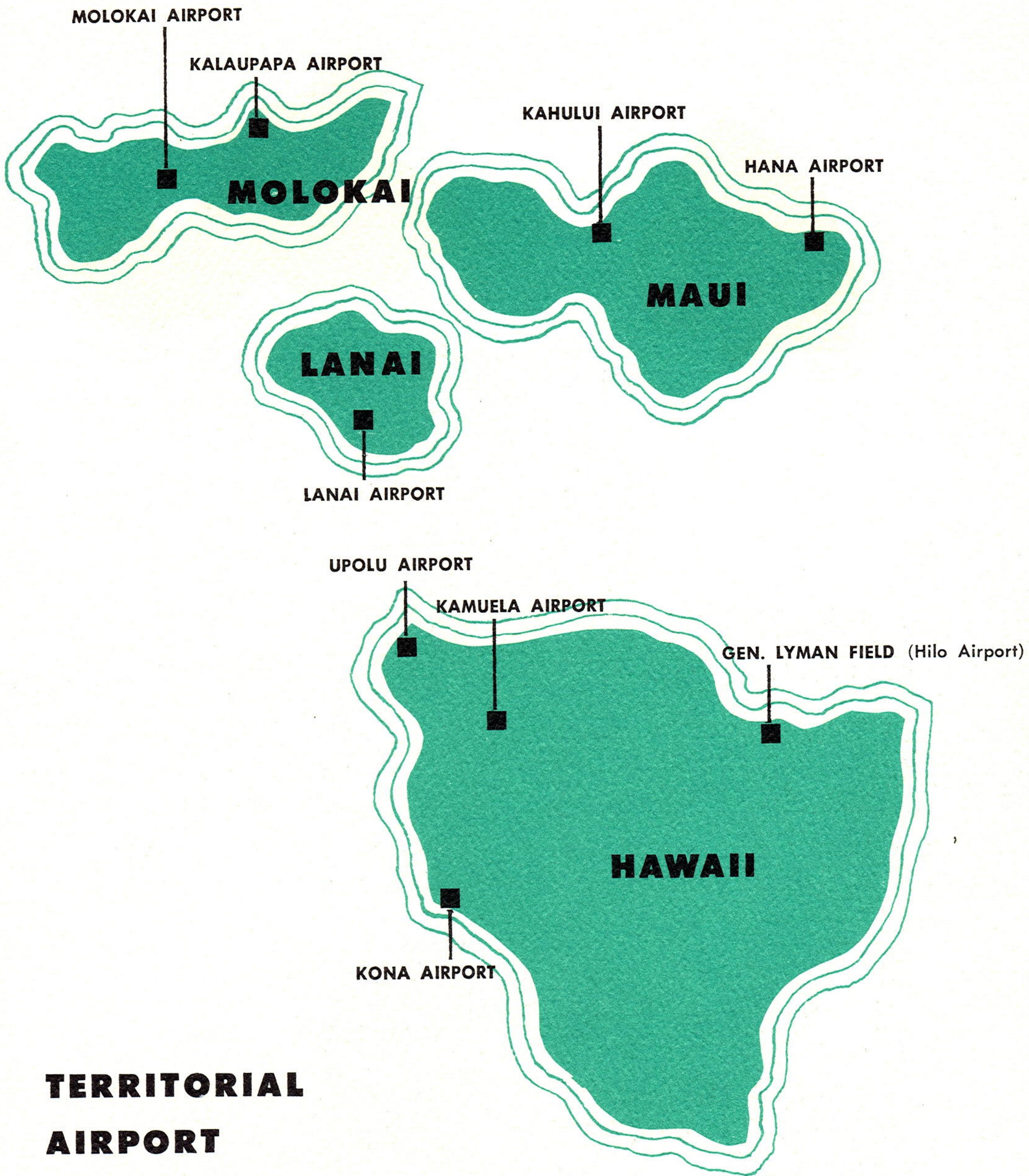
FUEL TAX FUND S-6801	REVENUE FUND S-6802	FEDERAL GRANTS	BOND FUND *B-6805	BOND FUND †B-6806	BOND FUND ‡B-6808
\$ 842,769	\$ 29,832		\$442,570	\$15,746	\$3,933,194
1,376,451	70,265				
	168,114				
	2,657				
	199,746				
	30,831				
	42,855				
	32,630				
		\$29,439			
1,081					
\$1,377,532	\$547,098	\$29,439			
68,608	17,677				
669,847					
204,795	444,436				
	2,404				
3,423	41,597				
	57,840				
311,857		29,439	442,570	15,746	3,476,143
\$1,258,530	\$563,954	\$29,439	\$442,570	\$15,746	\$3,476,143
\$ 961,771	\$ 12,976				\$ 457,051
\$ 495,841					\$ 150,481
366,986					\$ 306,570
\$ 862,827					\$ 457,051
\$ 98,944	\$ 12,976				





*A. P. Storrs,  
 Director of  
 Aeronautics,  
 with Frank Der Yuen,  
 Projects Development  
 Director of  
 Lockheed Air Terminal,  
 Inc., HAC consultants  
 in the development  
 of the jet-age  
 airport for Honolulu*





**TERRITORIAL  
AIRPORT  
SYSTEM**





**HAWAII AERONAUTICS COMMISSION**