

# Chickens and Eggs



National  
Agricultural  
Statistics  
Service

United States  
Department of  
Agriculture

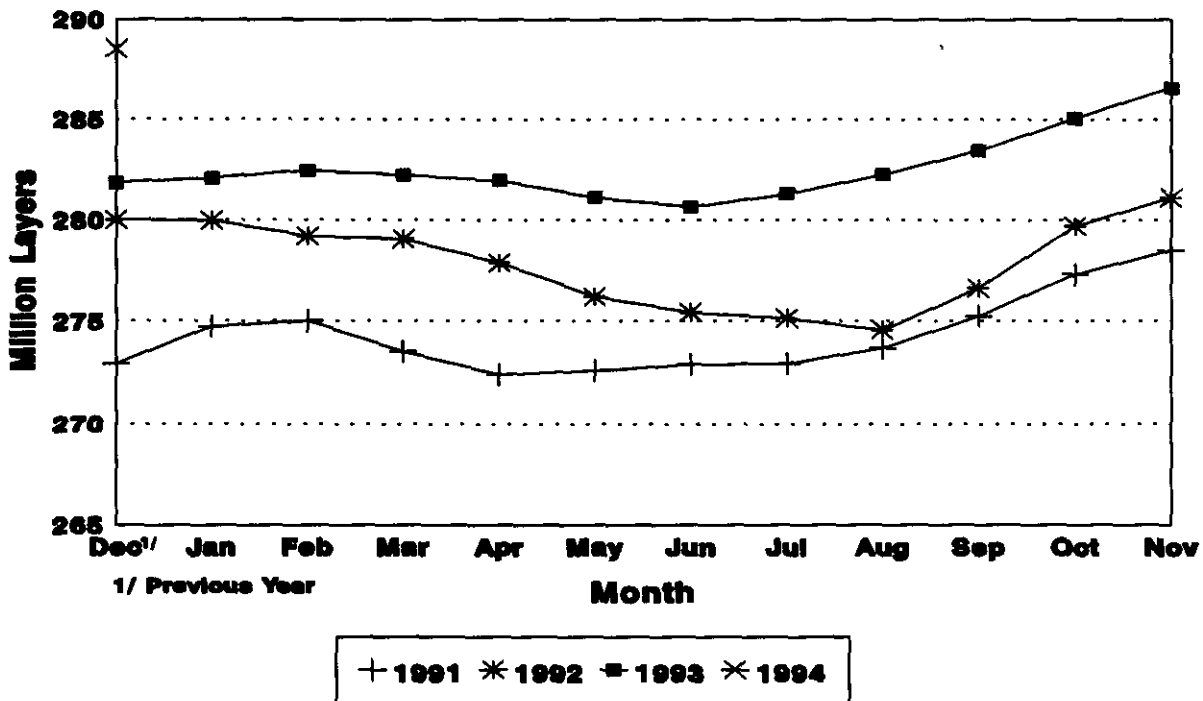
Washington, D.C.

Released January 27, 1994, by the Agricultural Statistics Board. Estimates refer to December 1993 and January 1994.

## December Egg Production Up 2 Percent

U.S. egg production totaled 6.25 billion during December 1993, up 2 percent from the 6.11 billion produced a year ago. Production included 5.36 billion table eggs, 827 million broiler-type hatching eggs, and 58.0 million egg-type hatching eggs. The total number of layers during December 1993 averaged 289 million, up 2 percent from the 282 million a year ago. December egg production per 100 layers was 2,166 eggs, compared with 2,169 in December 1992.

## Average Number of Layers United States, 1991 - 94



For information call Robert E. Little at (202) 720-6147. Office hours are 8:00 a.m. to 4:30 p.m. ET.

All layers in the U.S. on January 1, 1994 totaled 288 million, compared with 282 million a year ago. The 288 million layers consisted of 239 million layers producing table or commercial type eggs, 46.3 million layers producing broiler-type hatching eggs, and 2.66 million layers producing egg-type hatching eggs. Rate of lay per day on January 1, 1994, averaged 69.4 eggs per 100 layers, down fractionally from last year's 69.6 eggs per 100 layers.

Laying flocks in the 30 major egg production States produced 5.89 billion eggs during December. The number of layers during December averaged 272 million.

Individual State estimates are available for the 30 major egg producing States. These States are listed on page 8 of this release and account for approximately 94 percent of the total U.S. egg production. Production for the other States are grouped into an "Other States" category and combined with the 30 States published individually to obtain a U.S. estimate. Individual State estimates for "Other States" are available annually in the "Layers and Egg Production" report.

#### **Egg-Type Chicks Hatched Up 7 Percent**

Egg-type chicks **hatched** during December totaled 31.5 million, up 7 percent from December 1992. **Eggs in incubators** totaled 29.7 million on January 1, 1994, up 2 percent from a year ago.

Domestic placements of **egg-type pullet chicks for hatchery supply flocks** by leading breeders totaled 268,000 during December 1993, up 52 percent from the 176,000 of December 1992.

#### **Broiler Hatch Up 5 Percent**

The December 1993 **hatch** of broiler-type chicks, at 619 million, was 5 percent above December of the previous year. There were 510 million **eggs in incubators** on January 1, 1994, up 6 percent from a year earlier.

Leading breeders placed 5.67 million **broiler-type pullet chicks in domestic hatchery supply flocks** during December 1993, up 13 percent from December 1992.

**For information call Tom Kruchten at (202) 690-4870**

Average Number of Layers During the Month  
United States, 1991-1994 <sup>1/</sup>

Month :	1991	:	1992	:	1993	:	1994
	1.000 Layers						
Dec <sup>2/</sup> :	272.902		280.028		281.847		288.547
Jan :	274.738		279.996		282.098		
Feb :	275.002		279.208		282.481		
Mar :	273.511		279.071		282.255		
Apr :	272.356		277.894		281.984		
May :	272.558		276.212		281.145		
Jun :	272.875		275.422		280.664		
Jul :	272.897		275.144		281.324		
Aug :	273.651		274.562		282.286		
Sep :	275.241		276.634		283.442		
Oct :	277.324		279.720		285.048		
Nov :	278.519		281.119		286.544		

<sup>1/</sup> Data is for chart on cover page.

<sup>2/</sup> December preceding year.

Eggs and Layers: Layers on Hand and Eggs Produced by Type,  
and Forced Molt, United States, November-December 1992-93

Item	1992	1993 <sup>1/</sup>	1993 as % of 1992
Layers During Nov (1,000)			
All Layers	281,119	286,544	102
Table Egg Type	237,610	240,085	101
Hatching Egg Type	43,509	46,459	107
Broiler-Type Hatching	40,748	43,809	108
Egg-Type Hatching	2,761	2,650	96
Eggs per 100 Layers During Nov (Number)			
All Layers	2,103	2,107	100
Table Egg Type	2,156	2,167	101
Hatching Egg Type	1,813	1,795	99
Broiler-Type Hatching	1,789	1,774	99
Egg-Type Hatching	2,173	2,151	99
Eggs Produced During Nov (Million)			
All Layers	5,913	6,037	102
Table Egg Type	5,124	5,203	102
Hatching Egg Type	789	834	106
Broilers-Type Hatching	729	777	107
Egg-Type Hatching	60	57	95
Layers on Dec 1 (1,000)			
All Layers	282,034	288,615	102
Table Egg Type	238,317	240,496	101
Hatching Egg Type	43,717	48,119	110
Broiler-Type Hatching	40,955	45,479	111
Egg-Type Hatching	2,762	2,640	96
Eggs per 100 Layers on Dec 1 (Number)			
All Layers	70.3	70.3	100
Table Egg Type	72.1	72.6	101
Hatching Egg Type	60.2	58.6	97
Broiler-Type Hatching	59.4	57.9	98
Egg-Type Hatching	72.2	70.8	98

<sup>1/</sup> Revised.

Eggs and Layers: Layers on Hand and Eggs Produced by Type.  
and Forced Molt, United States, December-January 1992-94

Item	1992	1993 <u>1/</u>	1993 as % of 1992
<hr/>			
Layers During Dec (1,000)			
All Layers	281,847	288,547	102
Table Egg Type	237,501	239,985	101
Hatching Egg Type	44,346	48,562	110
Broiler-Type Hatching	41,571	45,907	110
Egg-Type Hatching	2,775	2,655	96
Eggs per 100 Layers During Dec (Number)			
All Layers	2.169	2.166	100
Table Egg Type	2.227	2.235	100
Hatching Egg Type	1.856	1.822	98
Broiler-Type Hatching	1.835	1.801	98
Egg-Type Hatching	2.162	2.185	101
Eggs Produced During Dec (Million)			
All Layers	6.112	6.249	102
Table Egg Type	5.289	5.364	101
Hatching Egg Type	823	885	108
Broiler-Type Hatching	763	827	108
Egg-Type Hatching	60	58	97
<hr/>			
	1993	1994 <u>1/</u>	1994 as % of 1993
<hr/>			
Layers on Jan 1 (1,000)			
All Layers	281,639	288,444	102
Table Egg Type	236,676	239,464	101
Hatching Egg Type	44,963	48,980	109
Broiler-Type Hatching	42,181	46,321	110
Egg-Type Hatching	2,782	2,659	96
Eggs per 100 Layers on Jan 1 (Number)			
All Layers	69.6	69.4	100
Table Egg Type	71.5	71.6	100
Hatching Egg Type	59.8	58.7	98
Broiler-Type Hatching	59.1	58.0	98
Egg-Type Hatching	71.7	72.3	101
Forced Molt Layers, Jan 1			
Percent Being Molted	<u>2/</u>	4.5	
Percent with Molt Completed	<u>2/</u>	22.2	

1/ Preliminary.

2/ Data not available.

Eggs and Layers: Layers on Hand and Eggs Produced by Type, and Forced Molt, 30 Selected States, November-December 1992-93 1/

Item	1992 <u>2/</u>	1993 <u>3/</u>	1993 as % of 1992
Layers During Nov (1,000)			
All Layers			
Table Egg Type			
Hatching Egg Type			
Broiler-Type Hatching			
Egg-Type Hatching			
Eggs per 100 Layers During Nov (Number)			
All Layers			
Table Egg Type			
Hatching Egg Type			
Egg-Type Hatching			
Broiler-Type Hatching			
Eggs Produced During Nov (Million)			
All Layers			
Table Egg Type			
Hatching Egg Type			
Broilers-Type Hatching			
Egg-Type Hatching			
Layers on Dec 1 (1,000)			
All Layers		271,780	
Table Egg Type		227,002	
Hatching Egg Type		44,778	
Broiler-Type Hatching		42,306	
Egg-Type Hatching		2,472	
Eggs per 100 Layers on Dec 1 (Number)			
All Layers		70.3	
Table Egg Type		72.6	
Hatching Egg Type		58.5	
Broiler-Type Hatching		57.8	
Egg-Type Hatching		71.0	
Forced Molt Layers, Dec 1		2.9	
Percent Being Molted		23.5	
Percent with Molt Completed			
Pullets Less Than 20 Weeks of Age, Dec 1 (1,000)		81.674	
Pullets Added During Nov (1,000)			
Layers Sold During Nov (1,000)			
Layers Died, Destroyed, or Disappeared For Any Reason During Nov (1,000)			

1/ Revised.

2/ Data not available.

3/ The 30 States are listed in the table on page 8, data for all other items not available.

Eggs and Layers: Layers on Hand and Eggs Produced by Type, and Forced Molt, 30 Selected States, December-January 1992-94 <sup>1/</sup>

Item	1992 <sup>2/</sup>	1993 <sup>3/</sup>	1993 as % of 1992
Layers During Dec (1,000)			
All Layers		271,837	
Table Egg Type		226,497	
Hatching Egg Type		45,340	
Broiler-Type Hatching		42,858	
Egg-Type Hatching		2,482	
Eggs per 100 Layers During Dec (Number)			
All Layers		2.167	
Table Egg Type		2.237	
Hatching Egg Type		1.817	
Broiler-Type Hatching		1.797	
Egg-Type Hatching		2.176	
Eggs Produced During Dec (Million)			
All Layers		5.890	
Table Egg Type		5.066	
Hatching Egg Type		824	
Broilers-Type Hatching		770	
Egg-Type Hatching		54	
	1993 <sup>2/</sup>	1994	1994 as % of 1993
Layers on Jan 1 (1,000)			
All Layers		271,860	
Table Egg Type		225,983	
Hatching Egg Type		45,877	
Broiler-Type Hatching		43,396	
Egg-Type Hatching		2,481	
Eggs per 100 Layers on Jan 1 (Number)			
All Layers		69.5	
Table Egg Type		71.7	
Hatching Egg Type		58.6	
Broiler-Type Hatching		57.8	
Egg-Type Hatching		72.6	
Forced Molt Layers, Jan 1			
Percent Being Molted		4.5	
Percent with Molt Completed		22.7	
Pullets Less Than 20 Weeks of Age, Jan 1 (1,000)		73,233	
Pullets Added During Dec (1,000)		18,229	
Layers Sold During Dec (1,000)		15,338	
Layers Died, Destroyed, or Disappeared For Any Reason During Dec (1,000)		2,581	

<sup>1/</sup> Preliminary.

<sup>2/</sup> Data not available.

<sup>3/</sup> The 30 States are listed in the table on page 8.

Layers and Eggs: Layers on Hand and Eggs Produced by State  
and United States, During November 1992-93 <sup>1/</sup>

State	Table Egg Layers in Flocks 30,000 and Above :				Eggs per 100 for All Layers <sup>3/</sup>	
	1992 <sup>2/</sup>	1993 <sup>2/</sup>	1992	1993	1992	1993
	1,000				Number	
AL	10,833	11,111	1,975	1,980		
AR	15,354	15,479	1,889	1,848		
CA	26,797	25,701	2,019	2,136		
CO	<sup>2/</sup>	<sup>2/</sup>	<sup>2/</sup>	<sup>2/</sup>		
CT	3,735	3,812	2,169	2,151		
FL	9,539	9,718	2,128	2,140		
GA	18,518	18,940	2,063	2,096		
HI	882	822	2,016	2,013		
IL	<sup>2/</sup>	<sup>2/</sup>	<sup>2/</sup>	<sup>2/</sup>		
IN	19,966	20,508	2,209	2,214		
IA	11,920	14,150	2,148	2,120		
ME	4,031	4,783	2,282	2,258		
MD	<sup>2/</sup>	<sup>2/</sup>	<sup>2/</sup>	<sup>2/</sup>		
MI	5,150	5,578	2,238	2,178		
MN	10,904	10,503	2,137	2,123		
MS	5,529	6,297	1,953	1,922		
MO	6,930	6,864	1,977	2,069		
NE	<sup>2/</sup>	<sup>2/</sup>	<sup>2/</sup>	<sup>2/</sup>		
NY	3,800	3,750	2,289	2,240		
NC	12,938	13,523	1,932	1,952		
OH	18,580	19,306	2,325	2,232		
OK	<sup>2/</sup>	<sup>2/</sup>	<sup>2/</sup>	<sup>2/</sup>		
OR	<sup>2/</sup>	<sup>2/</sup>	<sup>2/</sup>	<sup>2/</sup>		
PA	21,450	20,573	2,247	2,226		
SC	5,247	5,101	2,154	2,137		
SD	<sup>2/</sup>	<sup>2/</sup>	<sup>2/</sup>	<sup>2/</sup>		
TX	14,476	15,076	2,079	2,056		
VA	<sup>2/</sup>	<sup>2/</sup>	<sup>2/</sup>	<sup>2/</sup>		
WA	4,740	4,789	2,257	2,172		
WI	<sup>2/</sup>	<sup>2/</sup>	<sup>2/</sup>	<sup>2/</sup>		
30 Sts	<sup>2/</sup>	<sup>2/</sup>	<sup>2/</sup>	<sup>2/</sup>		
Oth Sts <sup>4/</sup>	<sup>2/</sup>	<sup>2/</sup>	<sup>2/</sup>	<sup>2/</sup>		
US	281,119	286,544	2,103	2,107		

- <sup>1/</sup> 1993 revised.
- <sup>2/</sup> Data Not available.
- <sup>3/</sup> Includes all layers and eggs produced in both table egg and hatching egg flocks regardless of size.
- <sup>4/</sup> Estimates for individual States are not available.



Layers and Eggs: Layers on Hand and Eggs Produced by State  
and United States, During December 1992-93 1/

State	Table Egg Layers in Flocks 30,000 and Above :		All Layers <u>3/</u> :		Eggs per 100 for All Layers <u>3/</u> :	
	1992 <u>2/</u> :	1993 <u>2/</u> :	1992 :	1993 :	1992 :	1993 :
	----- 1,000 -----				----- Number -----	
AL			10,766	11,279	2,043	2,048
AR			15,751	16,627	1,968	1,876
CA			26,601	25,086	2,128	2,173
CO			<u>2/</u>	3,287	<u>2/</u>	2,160
CT			3,675	3,840	2,231	2,240
FL			9,550	10,000	2,314	2,260
GA			18,582	19,249	2,120	2,156
HI			899	814	2,089	2,000
IL			<u>2/</u>	3,048	<u>2/</u>	2,165
IN			19,820	21,187	2,281	2,218
IA			12,375	14,100	2,166	2,213
ME			4,119	4,892	2,331	2,310
MD			<u>2/</u>	3,518	<u>2/</u>	2,246
MI			5,215	5,455	2,288	2,236
MN			11,098	10,371	2,127	2,160
MS			5,741	6,319	1,986	1,994
MO			6,763	6,740	1,996	2,166
NE			<u>2/</u>	7,725	<u>2/</u>	2,084
NY			3,800	3,809	2,316	2,337
NC			12,991	13,721	2,009	2,033
OH			18,561	19,531	2,295	2,273
OK			<u>2/</u>	3,550	<u>2/</u>	1,859
OR			<u>2/</u>	2,599	<u>2/</u>	2,232
PA			21,400	20,535	2,346	2,328
SC			5,044	5,033	2,201	2,205
SD			<u>2/</u>	2,070	<u>2/</u>	2,464
TX			14,600	15,376	2,151	2,140
VA			<u>2/</u>	3,908	<u>2/</u>	2,021
WA			4,598	4,898	2,392	2,287
WI			<u>2/</u>	3,270	<u>2/</u>	2,232
30 Sts			<u>2/</u>	271,837	<u>2/</u>	2,167
Oth Sts <u>3/</u>			<u>2/</u>	16,710	<u>2/</u>	2,148
US			281,847	288,547	2,169	2,166

1/ 1993 preliminary.

2/ Data not available.

3/ Includes all layers and eggs produced in both table egg and hatching egg flocks regardless of size.

4/ Estimates for individual States are not available.

Egg Production: By Type, State, and United States.  
November 1992-93 <sup>1/</sup>

State	Total Production		Table Eggs <sup>2/</sup>		Hatching Eggs <sup>2/</sup>	
	1992	1993	1992	1993	1992	1993
	Million Eggs					
AL	214	220	108	109	106	111
AR	290	286	148	142	142	144
CA	541	549				
CO	<sup>3/</sup>	<sup>3/</sup>	<sup>3/</sup>	<sup>3/</sup>	<sup>3/</sup>	<sup>3/</sup>
CT	81	82				
FL	203	208	190	195	13	13
GA	382	397	254	267	128	130
HI	17	<sup>3/</sup>	17	<sup>3/</sup>	<sup>3/</sup>	<sup>3/</sup>
IL	<sup>3/</sup>	<sup>3/</sup>	<sup>3/</sup>	<sup>3/</sup>	<sup>3/</sup>	<sup>3/</sup>
IN	441	454	429	443	12	11
IA	256	300				
ME	92	108				
MD	<sup>3/</sup>	<sup>3/</sup>	<sup>3/</sup>	<sup>3/</sup>	<sup>3/</sup>	<sup>3/</sup>
MI	115	121				
MN	233	223	224	214	9	9
MS	108	121	59	62	49	59
MO	137	142				
NE	<sup>3/</sup>	<sup>3/</sup>	<sup>3/</sup>	<sup>3/</sup>	<sup>3/</sup>	<sup>3/</sup>
NY	87	84				
NC	250	264	144	150	106	114
OH	432	431				
OK	<sup>3/</sup>	<sup>3/</sup>	<sup>3/</sup>	<sup>3/</sup>	<sup>3/</sup>	<sup>3/</sup>
OR	<sup>3/</sup>	<sup>3/</sup>	<sup>3/</sup>	<sup>3/</sup>	<sup>3/</sup>	<sup>3/</sup>
PA	482	458	468	446	14	12
SC	113	109	99	91	14	18
SD	<sup>3/</sup>	<sup>3/</sup>	<sup>3/</sup>	<sup>3/</sup>	<sup>3/</sup>	<sup>3/</sup>
TX	301	310	259	268	42	42
VA	<sup>3/</sup>	<sup>3/</sup>	<sup>3/</sup>	<sup>3/</sup>	<sup>3/</sup>	<sup>3/</sup>
WA	107	104				
WI	<sup>3/</sup>	<sup>3/</sup>	<sup>3/</sup>	<sup>3/</sup>	<sup>3/</sup>	<sup>3/</sup>
30 Sts	<sup>3/</sup>	<sup>3/</sup>	<sup>3/</sup>	<sup>3/</sup>	<sup>3/</sup>	<sup>3/</sup>
Oth Sts <sup>4/</sup>	<sup>3/</sup>	<sup>3/</sup>	<sup>3/</sup>	<sup>3/</sup>	<sup>3/</sup>	<sup>3/</sup>
US	5.913	6.037	5.124	5.203	789	834

<sup>1/</sup> 1993 revised.

<sup>2/</sup> Data by type of flock not shown for some States to avoid disclosing individual operations.

<sup>3/</sup> Data not available.

<sup>4/</sup> Estimates for individual States are not available.

Egg Production: By Type, State, and United States.  
December 1992-93 1/

State	Total Production		Table Eggs <u>2/</u>		Hatching Eggs <u>2/</u>	
	1992	1993	1992	1993	1992	1993
	Million Eggs					
AL	220	231	113	114	107	119
AR	310	312	156	152	154	160
CA	566	545				
CO	<u>3/</u>	71	<u>3/</u>	64	<u>3/</u>	7
CT	82	86				
FL	221	226	207	210	14	16
GA	394	415	261	276	133	139
HI	18	16	18	16	<u>3/</u>	<u>3/</u>
IL	<u>3/</u>	66	<u>3/</u>	65	<u>3/</u>	1
IN	452	470	440	460	12	10
IA	268	312				
ME	96	113				
MD	<u>3/</u>	79	<u>3/</u>	70	<u>3/</u>	9
MI	119	122				
MN	236	224	228	215	8	9
MS	114	126	64	61	50	65
MO	135	146				
NE	<u>3/</u>	161	<u>3/</u>	161	<u>3/</u>	<u>3/</u>
NY	88	89				
NC	261	279	149	160	112	119
OH	426	444				
OK	<u>3/</u>	66	<u>3/</u>	44	<u>3/</u>	22
OR	<u>3/</u>	58	<u>3/</u>	57	<u>3/</u>	1
PA	502	478	487	466	15	12
SC	111	111	96	93	15	18
SD	<u>3/</u>	51	<u>3/</u>	51	<u>3/</u>	<u>3/</u>
TX	314	329	271	285	43	44
VA	<u>3/</u>	79	<u>3/</u>	41	<u>3/</u>	38
WA	110	112				
WI	<u>3/</u>	73	<u>3/</u>	70	<u>3/</u>	3
30 Sts	<u>3/</u>	5,890	<u>3/</u>	5,066	<u>3/</u>	824
Oth Sts <u>1/</u>	<u>3/</u>	359	<u>3/</u>	298	<u>3/</u>	61
US	6,112	6,249	6,112	5,364	823	885

1/ 1993 preliminary.

2/ Data by type of flock not shown for some States to avoid disclosing individual operations.

3/ Data not available.

4/ Estimates for individual States are not available.

Forced Molt: Percent of All Layers by Month,  
United States, 1993-94 1/

Month	Percent Being Molted		Percent with Molt Completed	
	1993	1994	1993	1994
	Percent			
Jan	<u>2/</u>	4.5	<u>2/</u>	22.2
Feb				
Mar				
Apr				
May				
Jun				
Jul				
Aug				
Sep				
Oct				
Nov				
Dec				

1/ As of first of month.

2/ Data not available.

Forced Molt: Percent of All Layers by State  
and United States, 1993-94 1/

State	January			
	Percent Being Molted		Percent with Molt Completed	
	1993	1994	1993	1994
	Percent			
AL	0.5	0.5	21.5	13.5
AR	4.5	1.5	14.5	13.5
CA	10.0	7.0	38.0	44.0
CO	<u>2/</u>	6.0	<u>2/</u>	32.5
CT	1.5	<u>2/</u>	11.0	14.5
FL	4.0	1.5	37.0	40.0
GA	6.0	3.5	22.0	21.5
HI	<u>2/</u>	7.5	<u>2/</u>	40.0
IL	<u>2/</u>	11.5	<u>2/</u>	19.5
IN	1.0	11.5	15.0	19.0
IA	7.5	4.5	21.5	25.0
ME	0.0	0.0	0.5	0.5
MD	<u>2/</u>	6.0	<u>2/</u>	17.0
MI	5.0	1.0	18.0	23.0
MN	12.0	13.0	25.0	30.0
MS	4.0	4.0	20.0	25.0
MO	8.5	2.5	23.0	18.5
NE	<u>2/</u>	5.0	<u>2/</u>	15.0
NY	3.0	0.5	10.0	4.0
NC	4.0	2.0	20.0	17.0
OH	2.0	2.5	8.0	10.5
OK	<u>2/</u>	9.0	<u>2/</u>	11.0
OR	<u>2/</u>	2.5	<u>2/</u>	27.0
PA	1.5	3.0	18.5	14.0
SC	8.5	11.0	22.5	29.0
SD	<u>2/</u>	8.0	<u>2/</u>	27.5
TX	5.0	2.5	34.0	33.0
VA	<u>2/</u>	2.0	<u>2/</u>	24.5
WA	5.0	2.5	43.0	48.0
WI	<u>2/</u>	2.5	<u>2/</u>	23.5
30 Sts <u>3/</u>	4.8	4.5	22.2	22.7
Oth Sts <u>4/</u>	<u>2/</u>	5.0	<u>2/</u>	13.4
US	<u>2/</u>	4.5	<u>2/</u>	22.2

1/ As of first of month.

2/ Data not available.

3/ 1993 data are for 20 major States.

4/ Estimates for individual States are not available.

Hatchery Production: Eggs in Incubators, Chicks Hatched,  
and Placements by Type, United States, December-January 1992-94

Item	1992	1993	1993 as % of 1992
	----- 1,000 -----		Percent
<b>Egg-Type</b>			
Eggs in Incubators on Jan 1 <u>1/</u>	29,109	29,729	102
Chicks Hatched During Dec	29,512	31,519	107
Chicks Hatched Jan thru Dec	385,770	407,087	106
Pullets Placed in Hatchery			
Supply Flocks During Dec	176	268	152
7-18 Month Earlier <u>2/</u>	2,483	2,764	111
<b>Broiler-Type</b>			
Eggs in Incubators on Jan 1 <u>1/</u>	479,641	509,863	106
Chicks Hatched During Dec	588,334	618,968	105
Chicks Hatched Jan thru Dec	6,830,868	7,130,061	104
Pullets Placed in Hatchery			
Supply Flocks During Dec	5,005	5,669	113
7-14 Months Earlier <u>3/</u>	39,963	42,504	106

1/ Following year.

2/ 1993 includes pullet chicks placed June 1992 through May 1993.

3/ 1993 includes pullet chicks placed Oct 1992 through May 1993.

Egg-Type Eggs in Incubators: By Region and United States,  
January 1, 1993-94

Geographic Division	1993	1994	1994 as % of 1993
	----- 1,000 -----		Percent
North Atlantic	5,220	4,365	84
E North Central	7,788	6,781	87
W North Central	4,351	5,025	115
South Atlantic	5,178	4,782	92
South Central	2,713	3,627	134
West	3,859	5,149	133
US	29,109	29,729	102

Regional Listing:

North Atlantic = CT, ME, MA, NH, NJ, NY, PA, RI, VT.

E North Central = IL, IN, MI, OH, WI.

W North Central = IA, KS, MN, MO, NE, ND, SD.

South Atlantic = DE, FL, GA, MD, NC, SC, VA, WV.

South Central = AL, AR, KY, LA, MS, OK, TN, TX.

West = AK, AZ, CA, CO, HI, ID, MT, NM, NV, OR, UT, WA, WY.

Egg-Type Chicks Hatched: By State and United States,  
December and Year to Date 1992-93

State	December			Jan-Dec		
	1992	1993	1993 as % of 1992	1992	1993	1993 as % of 1992
	----- 1,000 -----		Percent	----- 1,000 -----		Percent
AR	960	1,031	107	12,649	14,224	112
FL	1,501	1,512	101	17,582	18,681	106
GA	1,628	1,667	102	23,030	26,361	114
IN	6,285	5,495	87	71,972	72,871	101
IA	2,360	2,015	85	30,332	31,407	104
KS	332	291	88	3,881	3,997	103
MN	1,777	2,174	122	22,313	22,949	103
MO	381	411	108	6,241	6,678	107
PA	3,514	3,178	90	43,985	43,673	99
Oth Sts <sup>1/</sup>	10,774	13,745	128	153,785	166,246	108
US	29,512	31,519	107	385,770	407,087	106

<sup>1/</sup> Not published separately to avoid disclosing data for individual operations.

Egg-Type Chicks Hatched: By Month, United States, 1991-93

Month	By Months				Cumulative			
	1991	1992	1993	1993 as % of 1992	1991	1992	1993	1993 as % of 1992
	----- 1,000 -----			Percent	----- 1,000 -----			Percent
Jan	34,487	32,496	33,368	103	34,487	32,496	33,368	103
Feb	34,837	31,951	33,673	105	69,324	64,447	67,041	104
Mar	37,041	36,496	37,280	102	106,365	100,943	104,321	103
Apr	39,775	35,774	37,241	104	146,140	136,717	141,562	104
May	38,404	38,479	37,052	96	184,544	175,196	178,614	102
Jun	36,227	34,571	35,078	101	220,771	209,767	213,692	102
Jul	33,696	32,067	34,177	107	254,467	241,834	247,869	102
Aug	33,656	27,551	32,755	119	288,123	269,385	280,624	104
Sep	34,007	27,960	31,878	114	322,130	297,345	312,502	105
Oct	34,307	31,995	32,241	101	356,437	329,340	344,743	105
Nov	30,400	26,918	30,825	115	386,837	356,258	375,568	105
Dec	32,717	29,512	31,519	107	419,554	385,770	407,087	106

Intended Placements: Egg-Type Pullet Chicks for Hatchery Supply  
Flocks by Month and Total, United States, 1991-93 <sup>1/</sup>

Month	Pullet Chicks Hatched			1993 as % of 1992	Cumulative Potential Placements Relative to Current Supply Flocks 7-18 Months Earlier <sup>2/</sup>		
	1991	1992	1993		1992	1993	1994
	1,000			Percent	1,000		
Jan	79	181	193	107	2,483	2,529	2,806
Feb	139	273	119	44	2,375	2,553	2,812
Mar	279	186	268	144	2,322	2,604	2,754
Apr	231	178	251	141	2,337	2,655	2,787
May	250	262	275	105	2,437	2,637	2,801
Jun	179	225	267	119	2,476	2,696	2,690
Jul	213	237	243	103	2,381	2,738	2,782
Aug	226	277	219	79	2,483	2,750	
Sep	186	237	270	114	2,617	2,596	
Oct	255	237	251	106	2,524	2,678	
Nov	210	269	158	59	2,471	2,751	
Dec	134	176	268	152	2,483	2,764	
Total	2,381	2,738	2,782	102			

<sup>1/</sup> Reported by leading breeders. Coverage may not be 100 percent. Includes expected pullet chicks from eggs sold during the preceding month at the rate of 125 pullet chicks per 30 dozen case of eggs.

<sup>2/</sup> For Dec 1993, includes breeder pullet chicks hatched Jun 1992 through May 1993.

Broiler-Type Eggs In Incubators: By Region  
and United States, January 1, 1993-94

Geographic Division	1993	1994	1994 as % of 1993
	1,000		Percent
North Atlantic	10,932	11,127	102
E North Central	4,779	5,122	107
W North Central	11,265	11,006	98
South Atlantic	194,334	205,146	106
South Central	238,284	256,805	108
West	20,047	20,657	103
US	479,641	509,863	106



Broiler-Type Chicks Hatched: By State and United States, December and Year to Date 1992-93

State	December			Jan-Dec		
	1992	1993	1993 as % of 1992	1992	1993	1993 as % of 1992
	1,000		Percent	1,000		Percent
AL	87,479	89,500	102	1,040,590	1,043,212	100
AR	98,962	103,293	104	1,178,117	1,215,817	103
DE	15,490	15,377	99	184,252	189,611	103
FL	12,706	13,055	103	147,166	154,711	105
GA	83,611	87,029	104	958,167	1,003,387	105
MD	34,647	35,237	102	393,874	412,327	105
MS	42,883	47,956	112	485,301	535,612	110
NC	57,555	58,836	102	638,911	682,460	107
PA	11,604	11,566	100	128,369	126,664	99
SC	10,168	14,060	138	114,831	152,786	133
TX	36,306	36,211	100	413,503	414,111	100
VA	18,043	18,780	104	214,055	218,872	102
CA TN & WV	29,673	32,072	108	336,830	353,810	105
15 Sts <u>1/</u>	539,127	562,972	104	6,233,966	6,503,380	104
OR & WA	5,669	5,922	104	65,903	66,067	100
Oth Sts <u>2/</u>	43,538	50,074	115	530,999	560,614	106
US	588,334	618,968	105	6,830,868	7,130,061	104

1/ States in the weekly hatchery production estimating program.

2/ Not published separately to avoid disclosing data for individual operations.

Broiler Chicks Hatched: By Month, United States, 1991-93

Month	By Months			Cumulative		
	1991	1992	1993 as % of 1992	1991	1992	1993 as % of 1992
	1,000		Percent	1,000		Percent
Jan	547,776	576,852	102	547,776	576,852	102
Feb	500,757	533,606	101	1,048,533	1,110,458	101
Mar	571,250	587,091	104	1,619,783	1,697,549	102
Apr	557,678	573,530	103	2,177,461	2,271,079	102
May	586,504	597,998	104	2,763,965	2,869,077	103
Jun	571,333	584,534	104	3,335,298	3,453,611	103
Jul	565,273	585,950	105	3,900,571	4,039,561	103
Aug	562,520	574,793	106	4,463,091	4,614,354	104
Sep	536,740	554,836	104	4,999,831	5,169,190	104
Oct	531,984	546,993	106	5,531,815	5,716,183	104
Nov	512,554	526,351	108	6,044,369	6,242,534	104
Dec	572,158	588,334	105	6,616,527	6,830,868	104

Intended Placements: Broiler-Type Pullet Chicks for Hatchery  
Supply Flocks by Month and Total, 1991-93 1/

Month	Pullet Chicks Hatched			: 1993 : as % of: : 1992	Cumulative Potential Placements Relative to Current Supply Flocks 7-14 Months Earlier <u>2/</u>		
	: 1991	: 1992	: 1993		: 1992	: 1993	: 1994
	----- 1,000 -----			Percent	----- 1,000 -----		
US Place- ments							
Jan	4,594	4,995	5,664	113	39,950	40,202	42,665
Feb	4,929	4,674	4,549	97	39,903	40,819	43,906
Mar	4,951	5,234	5,678	108	40,103	40,908	44,486
Apr	5,556	5,492	5,531	101	40,588	41,133	43,943
May	5,614	4,831	5,944	123	40,590	41,866	44,907
Jun	4,852	5,170	5,568	108	40,453	41,358	44,746
Jul	4,667	5,431	5,967	110	39,889	40,871	44,884
Aug	4,940	5,081	5,585	110	39,270	41,704	
Sep	5,079	5,220	5,121	98	39,092	41,083	
Oct	4,931	5,407	5,513	102	39,659	41,330	
Nov	4,814	4,726	5,517	117	40,211	41,780	
Dec	4,992	5,005	5,669	113	39,963	42,504	
Annual Total	59,919	61,266	66,306	108			
Total Place- ments <u>3/</u>							
Jan	5,750	6,339	7,098	112			
Feb	6,133	6,056	5,664	94			
Mar	5,976	6,685	6,909	103			
Apr	6,835	6,796	6,420	94			
May	6,855	5,984	7,182	120			
Jun	5,963	6,401	6,723	105			
Jul	6,043	6,464	7,114	110			
Aug	6,053	6,022	6,587	109			
Sep	6,224	6,242	6,177	99			
Oct	6,250	6,599	6,634	101			
Nov	5,412	5,814	6,718	116			
Dec	6,499	6,493	6,949	107			
Annual Total	73,993	75,895	80,175	106			

1/ Reported by leading breeders. Coverage may not be 100 percent. Includes expected pullet chicks from eggs sold during the preceding month at the rate of 125 pullet chicks per 30 dozen case of eggs.

2/ For Dec 1993, includes breeder pullet chicks hatched Oct 1992 through May 1993.

3/ U.S. production of intended placements worldwide.

**Data Sources:** Primary data for the "Chickens & Eggs" report are collected from weekly and/or monthly questionnaires sent to producers. An attempt is made to collect information for the layer and egg estimates from all known contractors and independent producers with over 30,000 table egg layers in their flock. Coverage for table egg operations with less than 30,000 table egg layers are estimated each month based on data reported in December. Approximately 910 contractors, independent egg producers and started pullet operations are contacted each month. An attempt is made to collect hatchery information from all known hatcheries. Approximately 340 hatcheries are contacted on a weekly and/or monthly basis.

**Revisions:** Revisions are generally the result of late or corrected data. Each report will contain revisions for the previous month for layer and egg estimates. Additionally, revisions that are needed after the monthly report will be made at the end of the marketing year and published in the respective annual summaries for Layers and Egg, and Hatchery.

**Procedures and Reliability:** Operations are mailed a questionnaire and given adequate time to respond by mail. Those that do not respond by mail are telephoned. Great care is exercised to ensure that operations are accounted for during each survey period. However, normally there are missing reports that must be accounted for in the estimates.

Sound statistical methodology is employed to derive the estimates from the reported data. All data are checked for unusual values. Each operation's data are compared to their own past operating profile and also compared to trends from other operations. Data for missing operations are estimated based on similar operations or historical data. Survey data are subject to non-sampling errors such as omissions and mistakes in reporting and in processing the data. While these errors cannot be measured directly, they are minimized by carefully reviewing all reported data for consistency and reasonableness.

Egg-type chicks hatched are comprised of all chicks of egg-type domesticated breeds including males, chicks destined for hatchery supply flocks, and research purposes. The relationship of chicks hatched to chicken inventory and poultry marketings are carefully monitored. The disposition of egg-type chicks hatched prior to placement into the laying flock can vary significantly, which can make comparisons to changes in layer inventory inconsistent over time.

Intended placement data, reported by leading breeders, include pullet chicks expected from eggs sold the preceding month. The breeders in this report account for a large percentage of replacement pullets for hatchery supply flocks. Production of replacement pullets by these breeders provide an indication of the potential number of pullets available for addition to hatchery egg supply flocks several months before the pullets will actually move into the flocks.

\*\*\*\*\*

The United States Department of Agriculture (USDA) prohibits discrimination in its programs on the basis of race, color, national origin, sex, religion, age, disability, political beliefs, and marital or familial status. Persons with disabilities who require alternative means for communication of program information (braille, large print, audiotape, etc.) should contact the USDA Office of Communications at (202) 720-5881 (voice) or (202) 720-7808 (TDD).

To file a complaint, write the Secretary of Agriculture, USDA, Washington, D.C., 20250, or call (202) 720-7327 (voice) or (202) 720-1127 (TDD). USDA is an equal employment opportunity employer.

The next "Chickens and Eggs" report will be released at 3 p.m. ET on February 24, 1994.

**Want to subscribe?**  **Time to renew?**

Subscribe to **Chickens and Eggs** today! If you already subscribe to this timely periodical, note that expiration information about your subscription appears on the top line of your mailing label. **Expiration information will appear in one of two formats: 1-PEC-2 (this means you have TWO issues remaining in your subscription) or APR95 (expiration date is April 1995).** Disregard this notice if no renewal information appears. Call **1-800-999-6779**, and tell us whether you want to subscribe or renew, or return this form to: **ERS-NASS, 341 Victory Drive, Herndon, VA 22070.**

**Chickens and Eggs**

- Yes! I want to **start** my subscription.
- Yes! I want to **renew** my subscription.

	1 Year	2 Years	3 Years
Domestic	<input type="checkbox"/> \$36.00	<input type="checkbox"/> \$70.00	<input type="checkbox"/> \$105.00
Foreign	<input type="checkbox"/> \$45.00	<input type="checkbox"/> \$87.50	<input type="checkbox"/> \$131.25

**New subscribers:**

Name: \_\_\_\_\_

Address: \_\_\_\_\_

City, State, Zip: \_\_\_\_\_

Daytime phone: (\_\_\_\_) \_\_\_\_\_

**Renewals:**

**ATTACH MAILING LABEL HERE**

**Payment method:**

- Bill me (domestic orders only).
- Enclosed is \$\_\_\_\_\_.

Use purchase orders, checks drawn on U.S. banks, cashier's checks, or international money orders. **Make payable to ERS-NASS.**

**Credit card orders:**

MasterCard  Visa Total charges \$\_\_\_\_\_.

Credit card number:

Card expiration date:    
Month/Year

**For fastest service, call our toll-free order desk 1-800-999-6779, in the U.S. and Canada; other areas please call 703-834-0125, or FAX this page to 703-834-0110.**