

# Chickens and Eggs



United States  
Department of  
Agriculture

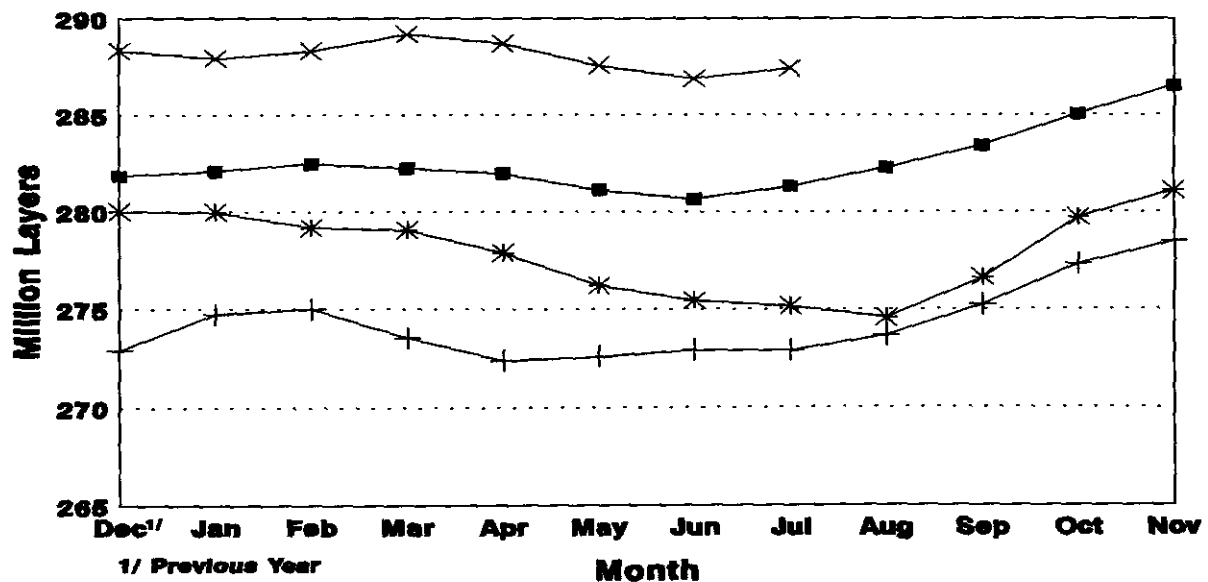
Washington, D.C.

Released August 25, 1994, by the Agricultural Statistics Board. Estimates refer to June, July, and August 1994.

## July Egg Production Up 3 Percent

U.S. egg production totaled 6.19 billion during July 1994, up 3 percent from the 5.99 billion produced a year ago. Production included 5.25 billion table eggs, 876 million broiler-type hatching eggs, and 60.0 million egg-type hatching eggs. The total number of layers during July 1994 averaged 287 million, up 2 percent from the 281 million a year ago. July egg production per 100 layers was 2,153 eggs, compared with 2,130 in July 1993.

## Average Number of Layers United States, 1991 - 94



+ 1991 \* 1992 ■ 1993 x 1994

For information call Joel Moore at (202) 720-3244. Office hours are 8:00 a.m. to 4:30 p.m. ET.

---

All layers in the U.S. on August 1, 1994, totaled 288 million, compared with 282 million a year ago. The 288 million layers consisted of 237 million layers producing table or commercial type eggs, 48.6 million layers producing broiler-type hatching eggs, and 2.61 million layers producing egg-type hatching eggs. Rate of lay per day on August 1, 1994, averaged 69.5 eggs per 100 layers, up 2 percent from last year's 68.3.

Laying flocks in the 30 major egg production States produced 5.84 billion eggs during July. The number of layers during July averaged 272 million.

Individual State estimates are available for the 30 major egg producing States. These States are listed on page 8 of this release and account for approximately 94 percent of the total U.S. egg production. Production for the other States are grouped into an "Other States" category and combined with the 30 States published individually to obtain a U.S. estimate. Individual State estimates for "Other States" are available annually in the **Layers and Egg Production** report.

#### **Egg-Type Chicks Hatched Down 11 Percent**

Egg-type chicks **hatched** during July totaled 30.3 million, down 11 percent from July 1993. **Eggs in incubators** totaled 27.5 million on August 1, 1994, down 2 percent from a year ago.

Domestic placements of **egg-type pullet chicks for hatchery supply flocks** by leading breeders totaled 264,000 during July 1994, up 9 percent from the 243,000 of July 1993.

#### **Broiler Hatch Up 5 Percent**

The July 1994 **hatch** of broiler-type chicks, at 650 million, was 5 percent above July of the previous year. There were 534 million **eggs in incubators** on August 1, 1994, up 6 percent from a year earlier.

Leading breeders placed 6.10 million **broiler-type pullet chicks in domestic hatchery supply flocks** during July 1994, up 2 percent from July 1993.

**For information call Tom Kruchten at (202) 690-4870**

Layers: Average Number During the Month,  
United States, 1991-1994 1/

Month :	1991	:	1992	:	1993	:	1994
	1,000 Layers						
Dec <u>2/</u> :	272.902		280.028		281.847		288.350
Jan :	274.738		279.996		282.098		287.930
Feb :	275.002		279.208		282.481		288.340
Mar :	273.511		279.071		282.255		289.206
Apr :	272.356		277.894		281.984		288.729
May :	272.558		276.212		281.145		287.588
Jun :	272.875		275.422		280.664		286.869
Jul :	272.897		275.144		281.324		287.430
Aug :	273.651		274.562		282.286		
Sep :	275.241		276.634		283.442		
Oct :	277.324		279.720		285.048		
Nov :	278.519		281.119		286.544		

1/ Data are for chart on cover page.

2/ December preceding year.

Eggs and Layers: Layers on Hand and Eggs Produced by Type,  
and Forced Molt, United States, June-July 1993-94

Item	1993	1994	1994 as % of 1993
<hr/>			
Layers During Jun (1,000)			
All Layers	280,664	286,869	102
Table Egg Type	234,669	236,284	101
Hatching Egg Type	45,995	50,585	110
Broiler-Type Hatching	43,099	47,850	111
Egg-Type Hatching	2,896	2,735	94
Eggs per 100 Layers During Jun (Number)			
All Layers	2,072	2,078	100
Table Egg Type	2,112	2,140	101
Hatching Egg Type	1,868	1,791	96
Broiler-Type Hatching	1,854	1,768	95
Egg-Type Hatching	2,072	2,194	106
Eggs Produced During Jun (Million)			
All Layers	5,816	5,962	103
Table Egg Type	4,957	5,056	102
Hatching Egg Type	859	906	105
Broilers-Type Hatching	799	846	106
Egg-Type Hatching	60	60	100
Layers on Jul 1 (1,000)			
All Layers	280,517	286,458	102
Table Egg Type	235,017	235,851	100
Hatching Egg Type	45,500	50,607	111
Broiler-Type Hatching	42,668	47,903	112
Egg-Type Hatching	2,832	2,704	95
Eggs per 100 Layers on Jul 1 (Number)			
All Layers	69.0	69.3	100
Table Egg Type	70.4	71.4	101
Hatching Egg Type	61.7	59.7	97
Broiler-Type Hatching	61.1	58.9	97
Egg-Type Hatching	72.1	74.1	103
Forced Molt Layers, Jul 1			
Percent Being Molted	1/	5.0	
Percent with Molt Completed	1/	22.3	

1/ Data not available.

Eggs and Layers: Layers on Hand and Eggs Produced by Type,  
and Forced Molt, United States, July-August 1993-94

Item	1993	1994 <u>1/</u>	1994 as % of 1993
Layers During Jul (1,000)			
All Layers	281,324	287,430	102
Table Egg Type	235,742	236,534	100
Hatching Egg Type	45,582	50,896	112
Broiler-Type Hatching	42,801	48,234	113
Egg-Type Hatching	2,781	2,662	96
Eggs per 100 Layers During Jul (Number)			
All Layers	2,130	2,153	101
Table Egg Type	2,176	2,220	102
Hatching Egg Type	1,893	1,839	97
Broiler-Type Hatching	1,867	1,816	97
Egg-Type Hatching	2,301	2,254	98
Eggs Produced During Jul (Million)			
All Layers	5,992	6,188	103
Table Egg Type	5,129	5,252	102
Hatching Egg Type	863	936	108
Broilers-Type Hatching	799	876	110
Egg-Type Hatching	64	60	94
Layers on Aug 1 (1,000)			
All Layers	282,201	288,359	102
Table Egg Type	236,558	237,193	100
Hatching Egg Type	45,643	51,166	112
Broiler-Type Hatching	42,925	48,558	113
Egg-Type Hatching	2,718	2,608	96
Eggs per 100 Layers on Aug 1 (Number)			
All Layers	68.3	69.5	102
Table Egg Type	69.8	71.7	103
Hatching Egg Type	60.4	59.0	98
Broiler-Type Hatching	59.5	58.2	98
Egg-Type Hatching	74.3	74.4	100
Forced Molt Layers, Aug 1			
Percent Being Molted	<u>2/</u>	4.5	
Percent with Molt Completed	<u>2/</u>	22.9	

1/ Preliminary.

2/ Data not available.

Eggs and Layers: Layers on Hand and Eggs Produced by Type, and Forced Molt, June-July, 30 Selected States, 1993-94

Item	1993 <u>1</u> /	1994 <u>2</u> /	1994 as % of 1993
Layers During Jun (1,000)			
All Layers		270,912	
Table Egg Type		223,533	
Hatching Egg Type		47,379	
Broiler-Type Hatching		44,785	
Egg-Type Hatching		2,594	
Eggs per 100 Layers During Jun (Number)			
All Layers		2,076	
Table Egg Type		2,137	
Hatching Egg Type		1,790	
Broiler-Type Hatching		1,766	
Egg-Type Hatching		2,197	
Eggs Produced During Jun (Million)			
All Layers		5,625	
Table Egg Type		4,777	
Hatching Egg Type		848	
Broilers-Type Hatching		791	
Egg-Type Hatching		57	
Layers on Jul 1 (1,000)			
All Layers		270,747	
Table Egg Type		223,288	
Hatching Egg Type		47,459	
Broiler-Type Hatching		44,888	
Egg-Type Hatching		2,571	
Eggs per 100 Layers on Jul 1 (Number)			
All Layers		69.2	
Table Egg Type		71.3	
Hatching Egg Type		59.5	
Broiler-Type Hatching		58.7	
Egg-Type Hatching		73.6	
Forced Molt Layers, Jul 1			
Percent Being Molted		5.1	
Percent with Molt Completed		22.3	
Pullets Less Than 20 Weeks of Age, Jul 1 (1,000)		78,144	
Pullets Added During Jun (1,000)		20,324	
Layers Sold During Jun (1,000)		17,668	
Layers Died, Destroyed, or Disappeared For Any Reason During Jun (1,000)		3,197	

1/ Data not available.

2/ The 30 States are listed in the table on page 8.

Eggs and Layers: Layers on Hand and Eggs Produced by Type, and Forced Molt, July-August, 30 Selected States, 1993-94 1/

Item	1993 <u>2/</u>	1994 <u>3/</u>	1994 as % of 1993
Layers During Jul (1,000)			
All Layers		271,700	
Table Egg Type		223,949	
Hatching Egg Type		47,751	
Broiler-Type Hatching		45,209	
Egg-Type Hatching		2,542	
Eggs per 100 Layers During Jul (Number)			
All Layers		2,149	
Table Egg Type		2,217	
Hatching Egg Type		1,832	
Broiler-Type Hatching		1,809	
Egg-Type Hatching		2,242	
Eggs Produced During Jul (Million)			
All Layers		5,840	
Table Egg Type		4,965	
Hatching Egg Type		875	
Broilers-Type Hatching		818	
Egg-Type Hatching		57	
Layers on Aug 1 (1,000)			
All Layers		272,622	
Table Egg Type		224,594	
Hatching Egg Type		48,028	
Broiler-Type Hatching		45,525	
Egg-Type Hatching		2,503	
Eggs per 100 Layers on Aug 1 (Number)			
All Layers		69.3	
Table Egg Type		71.6	
Hatching Egg Type		58.7	
Broiler-Type Hatching		57.9	
Egg-Type Hatching		74.0	
Forced Molt Layers, Aug 1			
Percent Being Molted		4.6	
Percent with Molt Completed		23.0	
Pullets Less Than 20 Weeks of Age, Aug 1 (1,000)		75,422	
Pullets Added During Jul (1,000)		20,886	
Layers Sold During Jul (1,000)		14,804	
Layers Died, Destroyed, or Disappeared For Any Reason During Jul (1,000)		2,663	

1/ Preliminary.

2/ Data not available.

3/ The 30 States are listed in the table on page 8.

Layers and Eggs: Layers on Hand and Eggs Produced by State  
and United States, During June 1993-94

State	Table Egg Layers in : Flocks 30,000 and Above:		All Layers <u>2/</u>		Eggs per 100 for All Layers <u>2/</u>	
	1993 <u>2/</u>	1994	1993	1994	1993	1994
	1,000		Number			
AL	5.034	10,995	11,485	1,919	1,942	
AR	6.820	15,737	16,757	1,944	1,928	
CA	23,889	25,850	24,511	2,058	2,093	
CO	2,583	<u>1/</u>	3,150	<u>1/</u>	2,032	
CT	3,497	3,687	3,701	2,224	2,108	
FL	8,850	9,554	9,597	2,051	2,115	
GA	9,929	17,844	17,776	1,950	1,946	
HI	766	861	844	2,028	1,914	
IL	2,715	<u>1/</u>	2,890	<u>1/</u>	2,180	
IN	19,716	19,747	20,561	2,137	2,145	
IA	13,760	13,075	14,550	2,073	2,131	
ME	4,927	4,336	5,098	2,375	2,295	
MD	2,605	<u>1/</u>	3,122	<u>1/</u>	2,178	
MI	4,902	5,100	5,201	2,187	2,169	
MN	9,195	10,595	10,068	2,020	2,116	
MS	2,477	6,175	6,337	1,960	1,957	
MO	6,075	6,495	6,711	2,109	2,086	
NE	7,825	<u>1/</u>	7,975	<u>1/</u>	2,061	
NY	3,360	3,751	3,685	2,186	2,252	
NC	6,501	13,385	13,853	1,928	1,870	
OH	20,832	18,525	21,216	2,175	2,225	
OK	1,965	<u>1/</u>	3,585	<u>1/</u>	1,813	
OR	2,466	<u>1/</u>	2,654	<u>1/</u>	2,185	
PA	19,245	21,125	20,585	2,201	2,191	
SC	3,950	4,903	4,968	2,121	2,194	
SD	1,745	<u>1/</u>	2,025	<u>1/</u>	2,007	
TX	12,319	14,225	15,651	2,032	1,974	
VA	1,575	<u>1/</u>	3,967	<u>1/</u>	1,916	
WA	4,667	4,861	4,913	2,201	2,259	
WI	2,963	<u>1/</u>	3,476	<u>1/</u>	2,071	
30 Sts	217,153	<u>1/</u>	270,912	<u>1/</u>	2,076	
Oth Sts <u>3/</u>	11,501	<u>1/</u>	15,957	<u>1/</u>	2,112	
US	228,654	280,664	286,869	2,072	2,078	

1/ Data not available.

2/ Includes all layers and eggs produced in both table egg and hatching egg flocks regardless of size.

3/ Estimates for individual States are not available.



Layers and Eggs: Layers on Hand and Eggs Produced by State  
and United States, During July 1993-94 1/

State	Table Egg Layers in : Flocks 30,000 and Above:		All Layers <u>3/</u>		Eggs per 100 for All Layers <u>3/</u>	
	1993 <u>2/</u>	1994	1993	1994	1993	1994
	1,000		Number			
AL	5,172	10,851	11,708	1,908	1,999	
AR	6,690	15,748	16,618	1,975	1,938	
CA	24,124	26,100	24,705	2,100	2,170	
CO	2,629	<u>2/</u>	3,189	<u>2/</u>	2,070	
CT	3,530	3,810	3,727	2,257	2,227	
FL	8,988	9,479	9,716	2,099	2,223	
GA	9,793	17,920	17,852	1,987	2,022	
HI	753	853	831	2,071	2,012	
IL	2,557	<u>2/</u>	2,722	<u>2/</u>	2,278	
IN	19,778	19,657	20,634	2,238	2,191	
IA	13,980	13,000	14,780	2,146	2,158	
ME	4,862	4,521	5,032	2,345	2,385	
MD	2,730	<u>2/</u>	3,258	<u>2/</u>	2,241	
MI	4,854	5,301	5,150	2,319	2,334	
MN	9,320	10,578	10,193	2,080	2,237	
MS	2,363	6,243	6,307	1,970	2,014	
MO	6,043	6,426	6,701	2,116	2,209	
NE	7,775	<u>2/</u>	7,925	<u>2/</u>	2,182	
NY	3,408	3,775	3,725	2,305	2,362	
NC	6,366	13,120	13,808	1,997	1,897	
OH	21,156	18,725	21,503	2,286	2,297	
OK	1,925	<u>2/</u>	3,560	<u>2/</u>	1,826	
OR	2,459	<u>2/</u>	2,639	<u>2/</u>	2,198	
PA	19,255	20,985	20,571	2,244	2,270	
SC	3,872	4,929	4,886	2,130	2,251	
SD	1,738	<u>2/</u>	2,018	<u>2/</u>	2,136	
TX	12,236	14,351	15,550	2,090	2,090	
VA	1,590	<u>2/</u>	3,970	<u>2/</u>	2,040	
WA	4,664	4,903	4,904	2,305	2,325	
WI	2,995	<u>2/</u>	3,518	<u>2/</u>	2,160	
30 Sts	217,605	<u>2/</u>	271,700	<u>2/</u>	2,149	
Oth Sts <u>4/</u>	11,385	<u>2/</u>	15,730	<u>2/</u>	2,212	
US	228,990	281,324	287,430	2,130	2,153	

1/ 1994 preliminary.

2/ Data not available.

3/ Includes all layers and eggs produced in both table egg and hatching egg flocks regardless of size.

4/ Estimates for individual States are not available.

Egg Production: By Type, State, and United States,  
June 1993-94

State	Total Production		Table Eggs <u>1/</u>		Hatching Eggs <u>1/</u>	
	1993	1994	1993	1994	1993	1994
	Million Eggs					
AL	211	223	98	109	113	114
AR	306	323	143	150	163	173
CA	532	513				
CO	<u>2/</u>	64				
CT	82	78				
FL	196	203	181	186	15	17
GA	348	346	212	203	136	143
HI	17	16	17	16	0	0
IL	<u>2/</u>	63	<u>2/</u>	62	<u>2/</u>	1
IN	422	441	410	431	12	10
IA	271	310				
ME	103	117				
MD	<u>2/</u>	68	<u>2/</u>	60	<u>2/</u>	8
MI	111	113				
MN	214	213	205	204	9	9
MS	121	124	66	55	55	69
MO	137	140				
NE	<u>2/</u>	164	<u>2/</u>	164	<u>2/</u>	0
NY	82	83				
NC	258	259	142	140	116	119
OH	403	472				
OK	<u>2/</u>	65	<u>2/</u>	42	<u>2/</u>	23
OR	<u>2/</u>	58	<u>2/</u>	56	<u>2/</u>	2
PA	465	451	451	435	14	16
SC	104	109	88	91	16	18
SD	<u>2/</u>	41	<u>2/</u>	41	<u>2/</u>	0
TX	289	309	247	265	42	44
VA	<u>2/</u>	76	<u>2/</u>	37	<u>2/</u>	39
WA	107	111				
WI	<u>2/</u>	72				
30 Sts	<u>2/</u>	5,625	<u>2/</u>	4,777	<u>2/</u>	848
Oth Sts <u>3/</u>	<u>2/</u>	337	<u>2/</u>	279	<u>2/</u>	58
US	5,816	5,962	4,957	5,056	859	906

1/ Data by type of flock not shown for some States to avoid disclosing individual operations.

2/ Data not available.

3/ Estimates for individual States are not available.

Egg Production: By Type, State, and United States,  
July 1993-94 1/

State	Total Production		Table Eggs <u>2/</u>		Hatching Eggs <u>2/</u>	
	1993	1994	1993	1994	1993	1994
	Million Eggs					
AL	207	234	94	115	113	119
AR	311	322	147	146	164	176
CA	548	536				
CO	<u>3/</u>	66				
CT	86	83				
FL	199	216	184	200	15	16
GA	356	361	219	211	137	150
HI	17	16	17	16	0	0
IL	<u>3/</u>	62	<u>3/</u>	61	<u>3/</u>	1
IN	440	452	428	442	12	10
IA	279	319				
ME	106	120				
MD	<u>3/</u>	73	<u>3/</u>	65	<u>3/</u>	8
MI	123	120				
MN	220	228	211	219	9	9
MS	123	127	68	55	55	72
MO	136	148				
NE	<u>3/</u>	173	<u>3/</u>	173	<u>3/</u>	0
NY	87	88				
NC	262	262	148	141	114	121
OH	428	494				
OK	<u>3/</u>	65	<u>3/</u>	41	<u>3/</u>	24
OR	<u>3/</u>	58	<u>3/</u>	56	<u>3/</u>	2
PA	471	467	456	451	15	16
SC	105	110	89	91	16	19
SD	<u>3/</u>	43	<u>3/</u>	43	<u>3/</u>	0
TX	300	325	258	279	42	46
VA	<u>3/</u>	81	<u>3/</u>	40	<u>3/</u>	41
WA	113	114				
WI	<u>3/</u>	76				
30 Sts	<u>3/</u>	5.840	<u>3/</u>	4.965	<u>3/</u>	875
Oth Sts <u>4/</u>	<u>3/</u>	348	<u>3/</u>	287	<u>3/</u>	61
US	5.992	6.188	5.129	5.252	863	936

1/ 1994 preliminary.

2/ Data by type of flock not shown for some States to avoid disclosing individual operations.

3/ Data not available.

4/ Estimates for individual States are not available.

Forced Molt: Percent of All Layers by Month,  
United States, 1993-94 1/

Month	Percent Being Molted		Percent with Molt Completed	
	1993	1994	1993	1994
	Percent			
Jan	<u>2/</u>	4.5	<u>2/</u>	22.1
Feb	<u>2/</u>	5.4	<u>2/</u>	21.2
Mar	<u>2/</u>	3.6	<u>2/</u>	20.8
Apr	<u>2/</u>	2.7	<u>2/</u>	20.9
May	<u>2/</u>	5.5	<u>2/</u>	20.1
Jun	<u>2/</u>	5.6	<u>2/</u>	21.2
Jul	<u>2/</u>	5.0	<u>2/</u>	22.3
Aug	<u>2/</u>	4.5	<u>2/</u>	22.9
Sep				
Oct				
Nov				
Dec				

1/ As of first of month.

2/ Data not available.

Forced Molt: Percent of All Layers by State  
and United States, 1993-94 1/

State	August			
	Percent Being Molted		Percent with Molt Completed	
	1993	1994	1993	1994
	Percent			
AL	5.5	5.0	16.0	13.0
AR	2.5	3.5	14.5	11.0
CA	10.5	10.0	40.0	48.0
CO	<u>2/</u>	9.0	<u>2/</u>	23.0
CT	3.0	0.0	11.5	17.5
FL	10.5	6.0	28.5	36.0
GA	4.5	4.0	21.5	21.5
HI	<u>2/</u>	7.0	<u>2/</u>	53.5
IL	<u>2/</u>	10.0	<u>2/</u>	20.5
IN	1.5	2.0	14.5	35.5
IA	4.5	7.0	25.0	25.0
ME	0.0	0.0	0.5	0.5
MD	<u>2/</u>	2.0	<u>2/</u>	32.5
MI	2.0	1.0	18.0	14.5
MN	8.0	2.5	29.5	27.0
MS	6.0	3.5	24.5	13.5
MO	3.5	2.5	28.0	27.0
NE	<u>2/</u>	5.0	<u>2/</u>	15.0
NY	0.0	0.5	12.0	7.5
NC	3.0	3.5	20.0	15.5
OH	1.0	3.0	11.0	10.5
OK	<u>2/</u>	6.5	<u>2/</u>	11.5
OR	<u>2/</u>	11.5	<u>2/</u>	22.5
PA	2.5	2.5	19.0	15.5
SC	0.5	8.5	39.5	24.0
SD	<u>2/</u>	7.5	<u>2/</u>	50.0
TX	2.5	5.0	26.0	24.0
VA	<u>2/</u>	3.5	<u>2/</u>	11.5
WA	3.0	7.5	45.5	39.0
WI	<u>2/</u>	9.0	<u>2/</u>	24.5
30 Sts <u>3/</u>	4.2	4.6	22.5	23.0
Oth Sts <u>4/</u>	<u>2/</u>	2.0	<u>2/</u>	21.4
US	<u>2/</u>	4.5	<u>2/</u>	22.9

1/ As of first of month.

2/ Data not available.

3/ 1993 data are for 20 major States.

4/ Estimates for individual States are not available.

Hatchery Production: Eggs in Incubators, Chicks Hatched,  
and Placements by Type, United States, July-August 1993-94

Item	1993	1994	1994 as % of 1993
	1,000		Percent
<b>Egg-Type</b>			
Eggs in Incubators on Aug 1	28,081	27,453	98
Chicks Hatched During Jul	33,980	30,260	89
Chicks Hatched Jan thru Jul	250,519	230,280	92
Pullets Placed in Hatchery			
Supply Flocks During Jul	243	264	109
7-18 Month Earlier <u>1/</u>	2,738	2,782	102
<b>Broiler-Type</b>			
Eggs in Incubators on Aug 1	503,543	534,034	106
Chicks Hatched During Jul	618,808	650,087	105
Chicks Hatched Jan thru Jul	4,242,276	4,404,818	104
Pullets Placed in Hatchery			
Supply Flocks During Jul	5,967	6,104	102
7-14 Months Earlier <u>2/</u>	40,871	44,884	110

1/ 1994 includes pullet chicks placed Jan 1993 through Dec 1993.

2/ 1994 includes pullet chicks placed May 1993 through Dec 1993.

Egg-Type Eggs in Incubators: By Region and United States,  
August 1, 1993-94

Geographic Division	1993	1994	1994 as % of 1993
	1,000		Percent
North Atlantic	4,970	4,548	92
E North Central	6,940	7,018	101
W North Central	5,502	4,802	87
South Atlantic	5,151	3,874	75
South Central	1,901	3,504	184
West	3,617	3,707	102
US	28,081	27,453	98

Regional Listing:

North Atlantic = CT, ME, MA, NH, NJ, NY, PA, RI, VT.

E North Central = IL, IN, MI, OH, WI.

W North Central = IA, KS, MN, MO, NE, ND, SD.

South Atlantic = DE, FL, GA, MD, NC, SC, VA, WV.

South Central = AL, AR, KY, LA, MS, OK, TN, TX.

West = AK, AZ, CA, CO, HI, ID, MT, NM, NV, OR, UT, WA, WY.

Egg-Type Chicks Hatched: By State and United States,  
July 1993-94

State	July			Jan-Jul		
	1993	1994	1994 as % of 1993	1993	1994	1994 as % of 1993
	----- 1,000 -----		Percent	----- 1,000 -----		Percent
AR	981	856	87	8,408	7,666	91
FL	1,662	1,009	61	10,919	7,124	65
GA	1,960	1,655	84	16,655	11,975	72
IN	6,652	6,297	95	45,308	45,306	100
IA	3,007	3,192	106	19,297	17,737	92
KS	421	217	52	2,554	1,889	74
MN	2,044	1,503	74	13,473	13,870	103
MO	504	491	97	4,515	3,780	84
PA	4,836	3,789	78	31,909	31,018	97
Oth Sts <sup>1/</sup>	11,913	11,251	94	97,481	89,915	92
US	33,980	30,260	89	250,519	230,280	92

<sup>1/</sup> Not published separately to avoid disclosing data for individual operations.

Egg-Type Chicks Hatched: By Month, United States, 1992-94

Month:	By Months				Cumulative			
	1992	1993	1994	1994 as % of 1993	1992	1993	1994	1994 as % of 1993
	----- 1,000 -----			Percent	----- 1,000 -----			Percent
Jan	32,496	34,852	32,816	94	32,496	34,852	32,816	94
Feb	31,950	33,984	31,056	91	64,446	68,836	63,872	93
Mar	36,490	38,232	33,335	87	100,936	107,068	97,207	91
Apr	35,755	37,143	35,718	96	136,691	144,211	132,925	92
May	38,513	36,741	35,179	96	175,204	180,952	168,104	93
Jun	34,568	35,587	31,916	90	209,772	216,539	200,020	92
Jul	32,265	33,980	30,260	89	242,037	250,519	230,280	92
Aug	28,349	31,455			270,386	281,974		
Sep	28,760	31,775			299,146	313,749		
Oct	32,843	31,634			331,989	345,383		
Nov	27,718	30,073			359,707	375,456		
Dec	31,612	30,446			391,319	405,902		

Intended Placements: Egg-Type Pullet Chicks for Hatchery Supply  
Flocks by Month and Total, United States, 1992-94 1/

Month	Pullet Chicks Hatched			1994 as % of 1993	Cumulative Potential Placements Relative to Current Supply Flocks 7-18 Months Earlier 2/		
	1992	1993	1994		1993	1994	1995
	1,000			Percent	1,000		
Jan	181	193	197	102	2,529	2,806	2,916
Feb	273	119	186	156	2,553	2,812	2,937
Mar	186	268	259	97	2,604	2,754	
Apr	178	251	277	110	2,655	2,787	
May	262	275	334	121	2,637	2,801	
Jun	225	267	254	95	2,696	2,690	
Jul	237	243	264	109	2,738	2,782	
Aug	277	219			2,750	2,786	
Sep	237	270			2,596	2,853	
Oct	237	251			2,678	2,844	
Nov	269	158			2,751	2,870	
Dec	176	268			2,764	2,929	
Total	2,738	2,782					

1/ Reported by leading breeders. Coverage may not be 100 percent. Includes expected pullet chicks from eggs sold during the preceding month at the rate of 125 pullet chicks per 30 dozen case of eggs.

2/ For July 1994, includes breeder pullet chicks hatched Jan 1993 through Dec 1993.

Broiler-Type Eggs in Incubators: By Region  
and United States, August 1, 1993-94

Geographic Division	1993	1994	1994 as % of 1993
			Percent
	1,000		Percent
North Atlantic	11,279	12,118	107
E North Central	5,195	5,987	115
W North Central	10,296	14,074	137
South Atlantic	203,475	213,544	105
South Central	252,821	267,046	106
West	20,477	21,265	104
US	503,543	534,034	106



Broiler-Type Chicks Hatched: Number by State  
and United States, July 1993-94

State	July			Jan-Jul		
	1993	1994	1994 as % of 1993	1993	1994	1994 as % of 1993
	1,000		Percent	1,000		Percent
AL	90,231	90,866	101	612,139	621,763	102
AR	105,435	103,868	99	718,987	722,602	101
DE	16,215	16,430	101	113,033	109,280	97
FL	13,391	11,918	89	90,078	84,607	94
GA	87,870	93,169	106	586,271	621,918	106
MD	35,432	36,230	102	245,755	247,103	101
MS	46,718	53,280	114	309,028	355,273	115
NC	57,625	61,200	106	403,371	411,475	102
PA	10,780	11,320	105	74,546	80,376	108
SC	13,030	15,149	116	86,847	104,566	120
TX	35,468	37,370	105	245,071	250,599	102
VA	17,773	19,674	111	127,118	131,729	104
CA TN & WV	29,696	33,428	113	213,700	227,666	107
15 Sts <u>1/</u>	559,664	583,902	104	3,825,944	3,968,957	104
OR & WA	5,801	6,301	109	39,846	41,912	105
Oth Sts <u>2/</u>	53,343	59,884	112	376,486	393,949	105
US	618,808	650,087	105	4,242,276	4,404,818	104

1/ States in the weekly hatchery production estimating program.

2/ Not published separately to avoid disclosing data for individual operations.

Broiler Chicks Hatched: By Month, United States, 1992-94

Month	By Months			Cumulative				
	1992	1993	1994	1994 as % of 1993	1992	1993	1994	1994 as % of 1993
	1,000			Percent	1,000			Percent
Jan	578,860	598,698	617,706	103	578,860	598,698	617,706	103
Feb	535,608	547,731	557,767	102	1,114,468	1,146,429	1,175,473	103
Mar	589,391	622,864	643,034	103	1,703,859	1,769,293	1,818,507	103
Apr	576,427	600,669	629,180	105	2,280,286	2,369,962	2,447,687	103
May	602,025	634,205	661,046	104	2,882,311	3,004,167	3,108,733	103
Jun	588,462	619,301	645,998	104	3,470,773	3,623,468	3,754,731	104
Jul	589,979	618,808	650,087	105	4,060,752	4,242,276	4,404,818	104
Aug	580,860	612,180			4,641,612	4,854,456		
Sep	561,683	582,580			5,203,295	5,437,036		
Oct	554,547	583,979			5,757,842	6,021,015		
Nov	536,927	574,055			6,294,769	6,595,070		
Dec	598,075	623,255			6,892,844	7,218,325		

Intended Placements: Broiler-Type Pullet Chicks for Hatchery  
Supply Flocks by Month and Total, 1992-94 1/

Month	Pullet Chicks Hatched			as % of: 1993	Cumulative Potential Placements Relative to Current Supply Flocks 7-14 Months Earlier <u>2/</u>		
	1992	1993	1994		1993	1994	1995
	1,000			Percent	1,000		
US Place- ments							
Jan	4,995	5,664	5,989	106	40,202	42,665	47,272
Feb	4,674	4,549	5,518	121	40,819	43,906	47,859
Mar	5,234	5,678	6,301	111	40,908	44,486	
Apr	5,492	5,531	6,101	110	41,133	43,943	
May	4,831	5,944	6,266	105	41,866	44,907	
Jun	5,170	5,568	5,911	106	41,358	44,746	
Jul	5,431	5,967	6,104	102	40,871	44,884	
Aug	5,081	5,585			41,704	44,929	
Sep	5,220	5,121			41,083	44,879	
Oct	5,407	5,513			41,330	45,213	
Nov	4,726	5,517			41,780	45,729	
Dec	5,005	5,669			42,504	46,874	
Annual Total	61,266	66,306					
Total Place- ments <sup>3/</sup>							
Jan	6,339	7,098	7,168	101			
Feb	6,056	5,664	6,829	121			
Mar	6,685	6,909	7,544	109			
Apr	6,796	6,420	7,234	113			
May	5,984	7,182	7,394	103			
Jun	6,401	6,723	7,153	106			
Jul	6,464	7,114	7,146	100			
Aug	6,022	6,587					
Sep	6,242	6,177					
Oct	6,599	6,634					
Nov	5,814	6,718					
Dec	6,493	6,949					
Annual Total	75,895	80,175					

1/ Reported by leading breeders. Coverage may not be 100 percent. Includes expected pullet chicks from eggs sold during the preceding month at the rate of 125 pullet chicks per 30 dozen case of eggs.

2/ For Jul 1994, includes breeder pullet chicks hatched May 1993 through Dec 1993.

3/ U.S. production of intended placements worldwide.

**Data Sources:** Primary data for the **Chickens & Eggs** report are collected from weekly and/or monthly questionnaires sent to producers. An attempt is made to collect information for the layer and egg estimates from all known contractors and independent producers with over 30,000 table egg layers in their flock. Coverage for table egg operations with less than 30,000 table egg layers are estimated each month based on data reported in December. Approximately 910 contractors, independent egg producers and started pullet operations are contacted each month. An attempt is made to collect hatchery information from all known hatcheries. Approximately 340 hatcheries are contacted on a weekly and/or monthly basis.

**Revisions:** Revisions are generally the result of late or corrected data. Each report will contain revisions for the previous month for layer and egg estimates. Additionally, revisions that are needed after the monthly report will be made at the end of the marketing year and published in the respective annual summaries for Layers and Egg, and Hatchery.

**Procedures and Reliability:** Operations are mailed a questionnaire and given adequate time to respond by mail. Those that do not respond by mail are telephoned. Great care is exercised to ensure that operations are accounted for during each survey period. However, normally there are missing reports that must be accounted for in the estimates.

Sound statistical methodology is employed to derive the estimates from the reported data. All data are checked for unusual values. Each operation's data are compared to their own past operating profile and also compared to trends from other operations. Data for missing operations are estimated based on similar operations or historical data. Survey data are subject to non-sampling errors such as omissions and mistakes in reporting and in processing the data. While these errors cannot be measured directly, they are minimized by carefully reviewing all reported data for consistency and reasonableness.

Egg-type chicks hatched are comprised of all chicks of egg-type domesticated breeds including males, chicks destined for hatchery supply flocks, and research purposes. The relationship of chicks hatched to chicken inventory and poultry marketings are carefully monitored. The disposition of egg-type chicks hatched prior to placement into the laying flock can vary significantly, which can make comparisons to changes in layer inventory inconsistent over time.

Intended placement data, reported by leading breeders, include pullet chicks expected from eggs sold the preceding month. The breeders in this report account for a large percentage of replacement pullets for hatchery supply flocks. Production of replacement pullets by these breeders provide an indication of the potential number of pullets available for addition to hatchery egg supply flocks several months before the pullets will actually move into the flocks.

The next "Chickens and Eggs" report will be released at 3 p.m. ET on September 23, 1994.

The United States Department of Agriculture (USDA) prohibits discrimination in its programs on the basis of race, color, national origin, sex, religion, age, disability, political beliefs, and marital or familial status. Persons with disabilities who require alternative means for communication of program information (braille, large print, audiotape, etc.) should contact the USDA Office of Communications at (202) 720-5881 (voice) or (202) 720-7808 (TDD).

To file a complaint, write the Secretary of Agriculture, USDA, Washington, D.C., 20250, or call (202) 720-7327 (voice) or (202) 720-1127 (TDD). USDA is an equal employment opportunity employer.

## **Want to subscribe?**    **Time to renew?**

Subscribe to **Chickens and Eggs** today! If you already subscribe to this timely periodical, note that expiration information about your subscription appears on the top line of your mailing label. Expiration information will appear in one of two formats: 1-PEC-2 (this means you have TWO issues remaining in your subscription) or APR95 (expiration date is April 1995). Disregard this notice if no renewal information appears. Call 1-800-999-6779, and tell us whether you want to subscribe or renew, or return this form to: **ERS-NASS, 341 Victory Drive, Herndon, VA 22070.**

### Chickens and Eggs

- Yes! I want to **start** my subscription.  
 Yes! I want to **renew** my subscription.

	1 Year	2 Years	3 Years
Domestic	<input type="checkbox"/> \$36.00	<input type="checkbox"/> \$70.00	<input type="checkbox"/> \$105.00
Foreign	<input type="checkbox"/> \$45.00	<input type="checkbox"/> \$87.50	<input type="checkbox"/> \$131.25

#### New subscribers:

Name: \_\_\_\_\_  
Address: \_\_\_\_\_  
City, State, Zip: \_\_\_\_\_  
Daytime phone: (\_\_\_\_) \_\_\_\_\_

#### Renewals:



#### Payment method:

- Bill me (domestic orders only). Use purchase orders, checks drawn on U.S. banks, cashier's checks, or international money orders. **Make payable to ERS-NASS.**  
 Enclosed is \$\_\_\_\_\_.

**Credit card orders:**     MasterCard     Visa    Total charges \$\_\_\_\_\_

Credit card number: 

--	--	--	--	--	--	--	--	--	--	--	--	--	--	--	--	--	--	--	--

    Card expiration date: 

--	--	--	--

Month/Year

**For fastest service, call our toll-free order desk 1-800-999-6779,  
in the U.S. and Canada; other areas please call 703-834-0125,  
or FAX this page to 703-834-0110.**