

Chickens and Eggs



United States
Department of
Agriculture

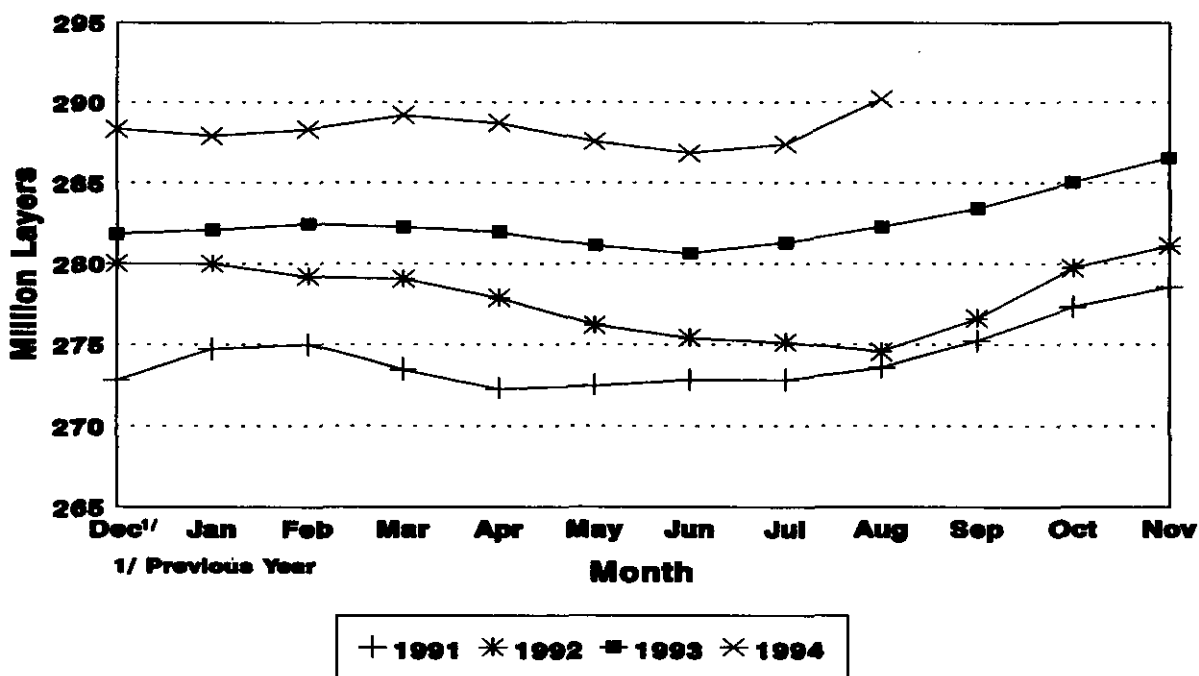
Washington, D.C.

Released September 23, 1994, by the Agricultural Statistics Board. Estimates refer to July, August, and September 1994.

August Egg Production Up 4 Percent

U.S. egg production totaled 6.26 billion during August 1994, up 4 percent from the 6.02 billion produced a year ago. Production included 5.33 billion table eggs, 876 million broiler-type hatching eggs, and 59.0 million egg-type hatching eggs. The total number of layers during August 1994 averaged 290 million, up 3 percent from the 282 million a year ago. August egg production per 100 layers was 2,158 eggs, compared with 2,131 in August 1993.

Average Number of Layers United States, 1991 - 94



For information call Joel D. Moore at (202) 720-3244. Office hours are 8:00 a.m. to 4:30 p.m. ET.

All layers in the U.S. on September 1, 1994, totaled 292 million, compared with 282 million a year ago. The 292 million layers consisted of 241 million layers producing table or commercial type eggs, 48.3 million layers producing broiler-type hatching eggs, and 2.63 million layers producing egg-type hatching eggs. Rate of lay per day on September 1, 1994, averaged 69.7 eggs per 100 layers, down slightly from last year's 69.9.

Laying flocks in the 30 major egg production States produced 5.91 billion eggs during August. The number of layers during August averaged 274 million.

Individual State estimates are available for the 30 major egg producing States. These States are listed on page 8 of this release and account for approximately 94 percent of the total U.S. egg production. Production for the other States are grouped into an "Other States" category and combined with the 30 States published individually to obtain a U.S. estimate. Individual State estimates for "Other States" are available annually in the "**Layers and Egg Production**" report.

Egg-Type Chicks Hatched Up Slightly

Egg-type chicks **hatched** during August totaled 31.5 million, up slightly from August 1993. **Eggs in incubators** totaled 27.7 million on September 1, 1994, down 4 percent from a year ago.

Domestic placements of **egg-type pullet chicks for hatchery supply flocks** by leading breeders totaled 309,000 during August 1994, up 41 percent from the 219,000 of August 1993.

Broiler Hatch Up 8 Percent

The August 1994 **hatch** of broiler-type chicks, at 658 million, was 8 percent above August of the previous year. There were 536 million **eggs in incubators** on September 1, 1994, up 7 percent from a year earlier.

Leading breeders placed 6.06 million **broiler-type pullet chicks in domestic hatchery supply flocks** during August 1994, up 9 percent from August 1993.

For information call Tom Kruchten at (202) 690-4870

Layers: Average Number During the Month,
United States, 1991-1994 1/

Month :	1991	:	1992	:	1993	:	1994
	1,000 Layers						
Dec <u>2/</u> :	272,902		280,028		281,847		288,350
Jan :	274,738		279,996		282,098		287,930
Feb :	275,002		279,208		282,481		288,340
Mar :	273,511		279,071		282,255		289,206
Apr :	272,356		277,894		281,984		288,729
May :	272,558		276,212		281,145		287,588
Jun :	272,875		275,422		280,664		286,869
Jul :	272,897		275,144		281,324		287,430
Aug :	273,651		274,562		282,286		290,212
Sep :	275,241		276,634		283,442		
Oct :	277,324		279,720		285,048		
Nov :	278,519		281,119		286,544		

1/ Data are for chart on cover page.

2/ December preceding year.

Eggs and Layers: Layers on Hand and Eggs Produced by Type,
and Forced Molt, United States, July-August 1993-94

Item	1993	1994	1994 as % of 1993
Layers During Jul (1,000)			
All Layers	281,324	287,430	102
Table Egg Type	235,742	236,534	100
Hatching Egg Type	45,582	50,896	112
Broiler-Type Hatching	42,801	48,234	113
Egg-Type Hatching	2,781	2,662	96
Eggs per 100 Layers During Jul (Number)			
All Layers	2,130	2,153	101
Table Egg Type	2,176	2,220	102
Hatching Egg Type	1,893	1,839	97
Broiler-Type Hatching	1,867	1,816	97
Egg-Type Hatching	2,301	2,254	98
Eggs Produced During Jul (Million)			
All Layers	5,992	6,188	103
Table Egg Type	5,129	5,252	102
Hatching Egg Type	863	936	108
Broilers-Type Hatching	799	876	110
Egg-Type Hatching	64	60	94
Layers on Aug 1 (1,000)			
All Layers	282,201	288,359	102
Table Egg Type	236,558	237,193	100
Hatching Egg Type	45,643	51,166	112
Broiler-Type Hatching	42,925	48,558	113
Egg-Type Hatching	2,718	2,608	96
Eggs per 100 Layers on Aug 1 (Number)			
All Layers	68.3	69.5	102
Table Egg Type	69.8	71.7	103
Hatching Egg Type	60.4	59.0	98
Broiler-Type Hatching	59.5	58.2	98
Egg-Type Hatching	74.3	74.4	100
Forced Molt Layers, Aug 1			
Percent Being Molted	<u>1/</u>	4.5	
Percent with Molt Completed	<u>1/</u>	22.9	

1/ Data not available.

Eggs and Layers: Layers on Hand and Eggs Produced by Type,
and Forced Molt, United States, August-September 1993-94

Item	1993	1994 <u>1/</u>	1994 as % of 1993
Layers During Aug (1,000)			
All Layers	282,286	290,212	103
Table Egg Type	236,729	239,150	101
Hatching Egg Type	45,557	51,062	112
Broiler-Type Hatching	42,910	48,438	113
Egg-Type Hatching	2,647	2,624	99
Eggs per 100 Layers During Aug (Number)			
All Layers	2,131	2,158	101
Table Egg Type	2,183	2,227	102
Hatching Egg Type	1,859	1,831	98
Broiler-Type Hatching	1,839	1,808	98
Egg-Type Hatching	2,191	2,248	103
Eggs Produced During Aug (Million)			
All Layers	6,015	6,262	104
Table Egg Type	5,168	5,327	103
Hatching Egg Type	847	935	110
Broilers-Type Hatching	789	876	111
Egg-Type Hatching	58	59	102
Layers on Sep 1 (1,000)			
All Layers	282,341	292,022	103
Table Egg Type	236,887	241,091	102
Hatching Egg Type	45,454	50,931	112
Broiler-Type Hatching	42,888	48,304	113
Egg-Type Hatching	2,566	2,627	102
Eggs per 100 Layers on Sep 1 (Number)			
All Layers	69.9	69.7	100
Table Egg Type	70.9	71.9	101
Hatching Egg Type	59.8	59.5	99
Broiler-Type Hatching	59.2	58.6	99
Egg-Type Hatching	73.3	74.8	102
Forced Molt Layers, Sep 1			
Percent Being Molted	<u>2/</u>	4.7	
Percent with Molt Completed	<u>2/</u>	22.8	

1/ Preliminary.

2/ Data not available.

Eggs and Layers: Layers on Hand and Eggs Produced by Type, and Forced Molt, July-August, 30 Selected States, 1993-94

Item	1993 <u>1</u> /	1994 <u>2</u> /	1994 as % of 1993
Layers During Jul (1,000)			
All Layers		271,700	
Table Egg Type		223,949	
Hatching Egg Type		47,751	
Broiler-Type Hatching		45,209	
Egg-Type Hatching		2,542	
Eggs per 100 Layers During Jul (Number)			
All Layers		2,149	
Table Egg Type		2,217	
Hatching Egg Type		1,832	
Broiler-Type Hatching		1,809	
Egg-Type Hatching		2,242	
Eggs Produced During Jul (Million)			
All Layers		5,840	
Table Egg Type		4,965	
Hatching Egg Type		875	
Broilers-Type Hatching		818	
Egg-Type Hatching		57	
Layers on Aug 1 (1,000)			
All Layers		272,622	
Table Egg Type		224,594	
Hatching Egg Type		48,028	
Broiler-Type Hatching		45,525	
Egg-Type Hatching		2,503	
Eggs per 100 Layers on Aug 1 (Number)			
All Layers		69.3	
Table Egg Type		71.6	
Hatching Egg Type		58.7	
Broiler-Type Hatching		57.9	
Egg-Type Hatching		74.0	
Forced Molt Layers, Aug 1			
Percent Being Molted		4.6	
Percent with Molt Completed		23.0	
Pullets Less Than 20 Weeks of Age, Aug 1 (1,000)		75,422	
Pullets Added During Jul (1,000)		20,886	
Layers Sold During Jul (1,000)		14,804	
Layers Died, Destroyed, or Disappeared For Any Reason During Jul (1,000)		2,663	

1/ Data not available.

2/ The 30 States are listed in the table on page 8.

Eggs and Layers: Layers on Hand and Eggs Produced by Type, and Forced Molt, August-September, 30 Selected States, 1993-94 1/

Item	1993 <u>2/</u>	1994 <u>3/</u>	1994 as % of 1993
Layers During Aug (1,000)			
All Layers		274,490	
Table Egg Type		226,552	
Hatching Egg Type		47,938	
Broiler-Type Hatching		45,415	
Egg-Type Hatching		2,523	
Eggs per 100 Layers During Aug (Number)			
All Layers		2,154	
Table Egg Type		2,223	
Hatching Egg Type		1,825	
Broiler-Type Hatching		1,801	
Egg-Type Hatching		2,259	
Eggs Produced During Aug (Million)			
All Layers		5,912	
Table Egg Type		5,037	
Hatching Egg Type		875	
Broilers-Type Hatching		818	
Egg-Type Hatching		57	
Layers on Sep 1 (1,000)			
All Layers		276,327	
Table Egg Type		228,502	
Hatching Egg Type		47,825	
Broiler-Type Hatching		45,294	
Egg-Type Hatching		2,531	
Eggs per 100 Layers on Sep 1 (Number)			
All Layers		69.6	
Table Egg Type		71.8	
Hatching Egg Type		59.3	
Broiler-Type Hatching		58.4	
Egg-Type Hatching		74.8	
Forced Molt Layers, Sep 1			
Percent Being Molted		4.7	
Percent with Molt Completed		22.9	
Pullets Less Than 20 Weeks of Age, Sep 1 (1,000)		74,927	
Pullets Added During Aug (1,000)		22,015	
Layers Sold During Aug (1,000)		15,103	
Layers Died, Destroyed, or Disappeared For Any Reason During Aug (1,000)		2,470	

1/ Preliminary.

2/ Data not available.

3/ The 30 States are listed in the table on page 8.

Layers and Eggs: Layers on Hand and Eggs Produced by State
and United States, During July 1993-94

State	Table Egg Layers in				Eggs per 100 for	
	Flocks 30,000 and Above		All Layers <u>2/</u>		All Layers <u>2/</u>	
	1993 <u>1/</u>	1994	1993	1994	1993	1994
	1,000				Number	
AL	5,172	10,851	11,708	1,908	1,999	
AR	6,690	15,748	16,618	1,975	1,938	
CA	24,124	26,100	24,705	2,100	2,170	
CO	2,629	<u>1/</u>	3,189	<u>1/</u>	2,070	
CT	3,530	3,810	3,727	2,257	2,227	
FL	8,988	9,479	9,716	2,099	2,223	
GA	9,793	17,920	17,852	1,987	2,022	
HI	753	853	831	2,071	2,012	
IL	2,557	<u>1/</u>	2,722	<u>1/</u>	2,278	
IN	19,778	19,657	20,634	2,238	2,191	
IA	13,980	13,000	14,780	2,146	2,158	
ME	4,862	4,521	5,032	2,345	2,385	
MD	2,730	<u>1/</u>	3,258	<u>1/</u>	2,241	
MI	4,854	5,301	5,150	2,319	2,334	
MN	9,320	10,578	10,193	2,080	2,237	
MS	2,363	6,243	6,307	1,970	2,014	
MO	6,043	6,426	6,701	2,116	2,209	
NE	7,775	<u>1/</u>	7,925	<u>1/</u>	2,182	
NY	3,408	3,775	3,725	2,305	2,362	
NC	6,366	13,120	13,808	1,997	1,897	
OH	21,156	18,725	21,503	2,286	2,297	
OK	1,925	<u>1/</u>	3,560	<u>1/</u>	1,826	
OR	2,459	<u>1/</u>	2,639	<u>1/</u>	2,198	
PA	19,255	20,985	20,571	2,244	2,270	
SC	3,872	4,929	4,886	2,130	2,251	
SD	1,738	<u>1/</u>	2,018	<u>1/</u>	2,136	
TX	12,236	14,351	15,550	2,090	2,090	
VA	1,590	<u>1/</u>	3,970	<u>1/</u>	2,040	
WA	4,664	4,903	4,904	2,305	2,325	
WI	2,995	<u>1/</u>	3,518	<u>1/</u>	2,160	
30 Sts	217,605	<u>1/</u>	271,700	<u>1/</u>	2,149	
Oth Sts <u>3/</u>	11,385	<u>1/</u>	15,730	<u>1/</u>	2,212	
US	228,990	281,324	287,430	2,130	2,153	

1/ Data not available.

2/ Includes all layers and eggs produced in both table egg and hatching egg flocks regardless of size.

3/ Estimates for individual States are not available.

Layers and Eggs: Layers on Hand and Eggs Produced by State
and United States, During August 1993-94 ^{1/}

State	Table Egg Layers in Flocks 30,000 and Above :				Eggs per 100 for All Layers ^{3/}	
	1993 ^{2/}	1994	1993	1994	1993	1994
	1,000			Number		
AL	5,040	10,956	11,581	1,889	2,012	
AR	6,741	15,739	16,661	1,938	1,915	
CA	24,875	25,851	25,442	2,124	2,178	
CO	2,654	^{2/}	3,213	^{2/}	2,116	
CT	3,457	3,856	3,648	2,308	2,275	
FL	8,875	9,383	9,601	2,153	2,219	
GA	10,282	18,296	18,398	1,979	1,995	
HI	746	854	828	2,074	2,040	
IL	2,610	^{2/}	2,768	^{2/}	2,240	
IN	20,020	19,724	20,886	2,246	2,207	
IA	14,250	13,251	15,055	2,151	2,152	
ME	4,865	4,574	5,041	2,317	2,400	
MD	2,745	^{2/}	3,242	^{2/}	2,283	
MI	5,024	5,600	5,325	2,306	2,368	
MN	9,450	10,613	10,316	2,092	2,220	
MS	2,356	6,090	6,301	1,987	2,016	
MO	5,983	6,526	6,683	2,115	2,170	
NE	7,850	^{2/}	8,000	^{2/}	2,182	
NY	3,399	3,776	3,716	2,331	2,395	
NC	6,461	13,053	14,076	1,992	1,932	
OH	21,421	18,951	21,766	2,290	2,283	
OK	1,950	^{2/}	3,620	^{2/}	1,768	
OR	2,454	^{2/}	2,641	^{2/}	2,234	
PA	19,395	20,820	20,700	2,248	2,280	
SC	3,910	4,871	4,940	2,176	2,247	
SD	1,713	^{2/}	1,990	^{2/}	2,148	
TX	12,228	14,326	15,500	2,073	2,123	
VA	1,596	^{2/}	3,930	^{2/}	2,112	
WA	4,890	4,856	5,126	2,265	2,302	
WI	2,958	^{2/}	3,496	^{2/}	2,203	
30 Sts	220,198	^{2/}	274,490	^{2/}	2,154	
Oth Sts ^{4/}	11,398	^{2/}	15,722	^{2/}	2,226	
US	231,596	282,286	290,212	2,131	2,158	

^{1/} 1994 preliminary.

^{2/} Data not available.

^{3/} Includes all layers and eggs produced in both table egg and hatching egg flocks regardless of size.

^{4/} Estimates for individual States are not available.

Egg Production: By Type, State, and United States.
July 1993-94

State	Total Production		Table Eggs <u>1/</u>		Hatching Eggs <u>1/</u>	
	1993	1994	1993	1994	1993	1994
	Million Eggs					
AL	207	234	94	115	113	119
AR	311	322	147	146	164	176
CA	548	536				
CO	<u>2/</u>	66				
CT	86	83				
FL	199	216	184	200	15	16
GA	356	361	219	211	137	150
HI	17	16	17	16	0	0
IL	<u>2/</u>	62	<u>2/</u>	61	<u>2/</u>	1
IN	440	452	428	442	12	10
IA	279	319				
ME	106	120				
MD	<u>2/</u>	73	<u>2/</u>	65	<u>2/</u>	8
MI	123	120				
MN	220	228	211	219	9	9
MS	123	127	68	55	55	72
MO	136	148				
NE	<u>2/</u>	173	<u>2/</u>	173	<u>2/</u>	0
NY	87	88				
NC	262	262	148	141	114	121
OH	428	494				
OK	<u>2/</u>	65	<u>2/</u>	41	<u>2/</u>	24
OR	<u>2/</u>	58	<u>2/</u>	56	<u>2/</u>	2
PA	471	467	456	451	15	16
SC	105	110	89	91	16	19
SD	<u>2/</u>	43	<u>2/</u>	43	<u>2/</u>	0
TX	300	325	258	279	42	46
VA	<u>2/</u>	81	<u>2/</u>	40	<u>2/</u>	41
WA	113	114				
WI	<u>2/</u>	76				
30 Sts	<u>2/</u>	5,840	<u>2/</u>	4,965	<u>2/</u>	875
Oth Sts <u>3/</u>	<u>2/</u>	348	<u>2/</u>	287	<u>2/</u>	61
US	5,992	6,188	5,129	5,252	863	936

1/ Data by type of flock not shown for some States to avoid disclosing individual operations.

2/ Data not available.

3/ Estimates for individual States are not available.

Egg Production: By Type, State, and United States,
August 1993-94 1/

State	Total Production		Table Eggs <u>2/</u>		Hatching Eggs <u>2/</u>	
	1993	1994	1993	1994	1993	1994
	Million Eggs					
AL	207	233	97	115	110	118
AR	305	319	143	143	162	176
CA	549	554				
CO	<u>3/</u>	68				
CT	89	83				
FL	202	213	188	199	14	14
GA	362	367	227	218	135	149
HI	17	17	17	17	0	0
IL	<u>3/</u>	62	<u>3/</u>	61	<u>3/</u>	1
IN	443	461	432	451	11	10
IA	285	324				
ME	106	121				
MD	<u>3/</u>	74	<u>3/</u>	67	<u>3/</u>	7
MI	129	126				
MN	222	229	213	220	9	9
MS	121	127	67	54	54	73
MO	138	145				
NE	<u>3/</u>	175	<u>3/</u>	175	<u>3/</u>	0
NY	88	89				
NC	260	272	148	148	112	124
OH	434	497				
OK	<u>3/</u>	64	<u>3/</u>	40	<u>3/</u>	24
OR	<u>3/</u>	59	<u>3/</u>	57	<u>3/</u>	2
PA	468	472	455	456	13	16
SC	106	111	90	92	16	19
SD	<u>3/</u>	43	<u>3/</u>	43	<u>3/</u>	0
TX	297	329	255	283	42	46
VA	<u>3/</u>	83	<u>3/</u>	41	<u>3/</u>	42
WA	110	118				
WI	<u>3/</u>	77				
30 Sts	<u>3/</u>	5,912	<u>3/</u>	5,037	<u>3/</u>	875
Oth Sts <u>4/</u>	<u>3/</u>	350	<u>3/</u>	290	<u>3/</u>	60
US	6,015	6,262	5,168	5,327	847	935

1/ 1994 preliminary.

2/ Data by type of flock not shown for some States to avoid disclosing individual operations.

3/ Data not available.

4/ Estimates for individual States are not available.

Forced Molt: Percent of All Layers by Month,
United States, 1993-94 1/

Month	Percent Being Molted		Percent with Molt Completed	
	1993	1994	1993	1994
	Percent			
Jan	<u>2/</u>	4.5	<u>2/</u>	22.1
Feb	<u>2/</u>	5.4	<u>2/</u>	21.2
Mar	<u>2/</u>	3.6	<u>2/</u>	20.8
Apr	<u>2/</u>	2.7	<u>2/</u>	20.9
May	<u>2/</u>	5.5	<u>2/</u>	20.1
Jun	<u>2/</u>	5.6	<u>2/</u>	21.2
Jul	<u>2/</u>	5.0	<u>2/</u>	22.3
Aug	<u>2/</u>	4.5	<u>2/</u>	22.9
Sep	<u>2/</u>	4.7	<u>2/</u>	22.8
Oct				
Nov				
Dec				

1/ As of first of month.

2/ Data not available.

Forced Molt: Percent of All Layers by State
and United States, 1993-94 1/

State	September			
	Percent Being Molted		Percent with Molt Completed	
	1993	1994	1993	1994
	Percent			
AL	4.0	2.0	14.5	17.5
AR	3.0	3.0	14.0	12.0
CA	6.5	11.0	46.0	45.0
CO	<u>2/</u>	4.0	<u>2/</u>	22.0
CT	3.0	0.0	8.0	14.5
FL	6.5	6.0	34.0	24.0
GA	4.5	5.5	23.5	21.5
HI	<u>2/</u>	3.5	<u>2/</u>	47.5
IL	<u>2/</u>	16.0	<u>2/</u>	23.5
IN	1.5	2.5	9.5	30.5
IA	6.0	5.5	23.5	27.0
ME	0.0	0.0	0.5	0.5
MD	<u>2/</u>	4.5	<u>2/</u>	30.0
MI	4.5	0.5	19.5	13.5
MN	7.0	5.5	29.5	24.5
MS	2.5	4.5	24.0	12.5
MO	2.0	3.5	24.0	26.5
NE	<u>2/</u>	7.0	<u>2/</u>	30.0
NY	0.5	3.5	8.0	10.0
NC	1.5	1.0	19.0	19.0
OH	0.5	2.5	8.0	11.5
OK	<u>2/</u>	7.5	<u>2/</u>	15.0
OR	<u>2/</u>	4.5	<u>2/</u>	34.0
PA	2.5	5.0	19.5	16.0
SC	6.5	11.0	37.0	20.5
SD	<u>2/</u>	0.5	<u>2/</u>	45.0
TX	3.0	4.0	26.5	22.5
VA	<u>2/</u>	5.0	<u>2/</u>	14.5
WA	9.0	4.5	41.0	36.5
WI	<u>2/</u>	2.5	<u>2/</u>	28.5
30 Sts <u>3/</u>	3.7	4.7	22.4	22.9
Oth Sts <u>4/</u>	<u>2/</u>	4.8	<u>2/</u>	20.2
US	<u>2/</u>	4.7	<u>2/</u>	22.8

1/ As of first of month.

2/ Data not available.

3/ 1993 data are for 20 major States.

4/ Estimates for individual States are not available.

Hatchery Production: Eggs in Incubators, Chicks Hatched,
and Placements by Type, United States, August-September 1993-94

Item	1993	1994	1994 as % of 1993
	----- 1,000 -----	-----	Percent
Egg-Type			
Eggs in Incubators on Sep 1	28,847	27,673	96
Chicks Hatched During Aug	31,455	31,518	100
Chicks Hatched Jan thru Aug	281,974	261,798	93
Pullets Placed in Hatchery			
Supply Flocks During Aug	219	309	141
7-18 Month Earlier ^{1/}	2,750	2,786	101
Broiler-Type			
Eggs in Incubators on Sep 1	502,677	536,430	107
Chicks Hatched During Aug	612,180	658,127	108
Chicks Hatched Jan thru Aug	4,854,456	5,062,945	104
Pullets Placed in Hatchery			
Supply Flocks During Aug	5,585	6,064	109
7-14 Months Earlier ^{2/}	41,704	44,929	108

^{1/} 1994 includes pullet chicks placed Feb 1993 through Jan 1994.

^{2/} 1994 includes pullet chicks placed Jun 1993 through Jan 1994.

Egg-Type Eggs in Incubators: By Region and United States,
September 1, 1993-94

Geographic Division	1993	1994	1994 as % of 1993
	----- 1,000 -----	-----	Percent
North Atlantic	5,363	5,150	96
E North Central	7,375	7,691	104
W North Central	4,720	4,506	95
South Atlantic	4,406	3,789	86
South Central	2,790	2,939	105
West	4,193	3,598	86
US	28,847	27,673	96

Regional Listing:

North Atlantic = CT, ME, MA, NH, NJ, NY, PA, RI, VT.

E North Central = IL, IN, MI, OH, WI.

W North Central = IA, KS, MN, MO, NE, ND, SD.

South Atlantic = DE, FL, GA, MD, NC, SC, VA, WV.

South Central = AL, AR, KY, LA, MS, OK, TN, TX.

West = AK, AZ, CA, CO, HI, ID, MT, NM, NV, OR, UT, WA, WY.

Egg-Type Chicks Hatched: By State and United States.
August 1993-94

State	August			Jan-Aug		
	1993	1994	1994 as % of 1993	1993	1994	1994 as % of 1993
	1,000		Percent	1,000		Percent
AR	836	1,157	138	9,244	8,823	95
FL	1,560	983	63	12,479	8,107	65
GA	2,143	1,960	91	18,798	13,935	74
IN	5,561	5,848	105	50,869	51,154	101
IA	2,528	2,566	102	21,825	20,303	93
KS	327	318	97	2,881	2,207	77
MN	1,996	1,762	88	15,469	15,632	101
MO	769	445	58	5,284	4,225	80
PA	4,045	4,162	103	35,954	35,180	98
Oth Sts ^{1/}	11,690	12,317	105	109,171	102,232	94
US	31,455	31,518	100	281,974	261,798	93

^{1/} Not published separately to avoid disclosing data for individual operations.

Egg-Type Chicks Hatched: By Month, United States, 1992-94

Month	By Months				Cumulative			
	1992	1993	1994	1994 as % of 1993	1992	1993	1994	1994 as % of 1993
	1,000			Percent	1,000			Percent
Jan	32,496	34,852	32,816	94	32,496	34,852	32,816	94
Feb	31,950	33,984	31,056	91	64,446	68,836	63,872	93
Mar	36,490	38,232	33,335	87	100,936	107,068	97,207	91
Apr	35,755	37,143	35,718	96	136,691	144,211	132,925	92
May	38,513	36,741	35,179	96	175,204	180,952	168,104	93
Jun	34,568	35,587	31,916	90	209,772	216,539	200,020	92
Jul	32,265	33,980	30,260	89	242,037	250,519	230,280	92
Aug	28,349	31,455	31,518	100	270,386	281,974	261,798	93
Sep	28,760	31,775			299,146	313,749		
Oct	32,843	31,634			331,989	345,383		
Nov	27,718	30,073			359,707	375,456		
Dec	31,612	30,446			391,319	405,902		

Intended Placements: Egg-Type Pullet Chicks for Hatchery Supply
Flocks by Month and Total, United States, 1992-94 1/

Month	Pullet Chicks Hatched			1994 as % of 1993	Cumulative Potential Placements Relative to Current Supply Flocks 7-18 Months Earlier 2/		
	1992	1993	1994		1993	1994	1995
	----- 1,000 -----			Percent	----- 1,000 -----		
Jan	181	193	197	102	2,529	2,806	2,916
Feb	273	119	186	156	2,553	2,812	2,937
Mar	186	268	259	97	2,604	2,754	3,027
Apr	178	251	277	110	2,655	2,787	
May	262	275	334	121	2,637	2,801	
Jun	225	267	254	95	2,696	2,690	
Jul	237	243	264	109	2,738	2,782	
Aug	277	219	309	141	2,750	2,786	
Sep	237	270			2,596	2,853	
Oct	237	251			2,678	2,844	
Nov	269	158			2,751	2,870	
Dec	176	268			2,764	2,929	
Total	2,738	2,782					

1/ Reported by leading breeders. Coverage may not be 100 percent. Includes expected pullet chicks from eggs sold during the preceding month at the rate of 125 pullet chicks per 30 dozen case of eggs.

2/ For August 1994, includes breeder pullet chicks hatched Feb 1993 through Jan 1994.

Broiler-Type Eggs in Incubators: By Region
and United States, September 1, 1993-94

Geographic Division	1993	1994	1994 as % of 1993
		----- 1,000 -----	
North Atlantic	11,351	11,459	101
E North Central	5,566	5,596	101
W North Central	10,999	14,422	131
South Atlantic	202,259	212,889	105
South Central	253,562	271,190	107
West	18,940	20,874	110
US	502,677	536,430	107

Broiler-Type Chicks Hatched: Number by State
and United States, August 1993-94

State	August			Jan-Aug		
	1993	1994	1994 as % of 1993	1993	1994	1994 as % of 1993
	1,000		Percent	1,000		Percent
AL	88,847	90,651	102	700,986	712,414	102
AR	103,456	105,803	102	822,443	828,405	101
DE	16,736	16,750	100	129,769	126,030	97
FL	13,180	11,961	91	103,258	96,568	94
GA	85,401	92,626	108	671,672	714,544	106
MD	35,122	35,916	102	280,877	283,019	101
MS	45,720	54,545	119	354,748	409,818	116
NC	57,885	61,230	106	461,256	472,705	102
PA	10,762	11,867	110	85,308	92,243	108
SC	13,114	15,065	115	99,961	119,631	120
TX	33,990	37,603	111	279,061	288,202	103
VA	19,025	19,655	103	146,143	151,384	104
CA TN & WV	29,631	32,336	109	243,331	260,002	107
15 Sts <u>1/</u>	552,869	586,008	106	4,378,813	4,554,965	104
OR & WA	5,489	5,783	105	45,335	47,695	105
Oth Sts <u>2/</u>	53,822	66,336	123	430,308	460,285	107
US	612,180	658,127	108	4,854,456	5,062,945	104

1/ States in the weekly hatchery production estimating program.

2/ Not published separately to avoid disclosing data for individual operations.

Broiler Chicks Hatched: By Month, United States, 1992-94

Month	By Months				Cumulative			
	1992	1993	1994	1994 as % of 1993	1992	1993	1994	1994 as % of 1993
	1,000			Percent	1,000			Percent
Jan	578,860	598,698	617,706	103	578,860	598,698	617,706	103
Feb	535,608	547,731	557,767	102	1,114,468	1,146,429	1,175,473	103
Mar	589,391	622,864	643,034	103	1,703,859	1,769,293	1,818,507	103
Apr	576,427	600,669	629,180	105	2,280,286	2,369,962	2,447,687	103
May	602,025	634,205	661,046	104	2,882,311	3,004,167	3,108,733	103
Jun	588,462	619,301	645,998	104	3,470,773	3,623,468	3,754,731	104
Jul	589,979	618,808	650,087	105	4,060,752	4,242,276	4,404,818	104
Aug	580,860	612,180	658,127	108	4,641,612	4,854,456	5,062,945	104
Sep	561,683	582,580			5,203,295	5,437,036		
Oct	554,547	583,979			5,757,842	6,021,015		
Nov	536,927	574,055			6,294,769	6,595,070		
Dec	598,075	623,255			6,892,844	7,218,325		

Intended Placements: Broiler-Type Pullet Chicks for Hatchery
Supply Flocks by Month and Total, 1992-94 1/

Month	Pullet Chicks Hatched			: 1994 : as % of: : 1993	Cumulative Potential Placements Relative to Current Supply Flocks 7-14 Months Earlier <u>2/</u>		
	1992	1993	1994		1993	1994	1995
	----- 1,000 -----			Percent	----- 1,000 -----		
US Place-ments							
Jan	4,995	5,664	5,989	106	40,202	42,665	47,272
Feb	4,674	4,549	5,518	121	40,819	43,906	47,859
Mar	5,234	5,678	6,301	111	40,908	44,486	48,254
Apr	5,492	5,531	6,101	110	41,133	43,943	
May	4,831	5,944	6,266	105	41,866	44,907	
Jun	5,170	5,568	5,911	106	41,358	44,746	
Jul	5,431	5,967	6,104	102	40,871	44,884	
Aug	5,081	5,585	6,064	109	41,704	44,929	
Sep	5,220	5,121			41,083	44,879	
Oct	5,407	5,513			41,330	45,213	
Nov	4,726	5,517			41,780	45,729	
Dec	5,005	5,669			42,504	46,874	
Annual Total	61,266	66,306					
Total Place-ments ^{3/}							
Jan	6,339	7,098	7,168	101			
Feb	6,056	5,664	6,829	121			
Mar	6,685	6,909	7,544	109			
Apr	6,796	6,420	7,234	113			
May	5,984	7,182	7,394	103			
Jun	6,401	6,723	7,153	106			
Jul	6,464	7,114	7,146	100			
Aug	6,022	6,587	7,290	111			
Sep	6,242	6,177					
Oct	6,599	6,634					
Nov	5,814	6,718					
Dec	6,493	6,949					
Annual Total	75,895	80,175					

1/ Reported by leading breeders. Coverage may not be 100 percent. Includes expected pullet chicks from eggs sold during the preceding month at the rate of 125 pullet chicks per 30 dozen case of eggs.

2/ For Aug 1994, includes breeder pullet chicks hatched Jun 1993 through Jan 1994.

3/ U.S. production of intended placements worldwide.

Data Sources: Primary data for the "Chickens and Eggs" report are collected from weekly and/or monthly questionnaires sent to producers. An attempt is made to collect information for the layer and egg estimates from all known contractors and independent producers with over 30,000 table egg layers in their flock. Coverage for table egg operations with less than 30,000 table egg layers are estimated each month based on data reported in December. Approximately 910 contractors, independent egg producers, and started pullet operations are contacted each month. An attempt is made to collect hatchery information from all known hatcheries. Approximately 340 hatcheries are contacted on a weekly and/or monthly basis.

Revisions: Revisions are generally the result of late or corrected data. Each report will contain revisions for the previous month for layer and egg estimates. Additionally, revisions that are needed after the monthly report will be made at the end of the marketing year and published in the respective annual summaries for Layers and Egg, and Hatchery.

Procedures and Reliability: Operations are mailed a questionnaire and given adequate time to respond by mail. Those that do not respond by mail are telephoned. Great care is exercised to ensure that operations are accounted for during each survey period. However, normally there are missing reports that must be accounted for in the estimates.

Sound statistical methodology is employed to derive the estimates from the reported data. All data are checked for unusual values. Each operation's data are compared to their own past operating profile and also compared to trends from other operations. Data for missing operations are estimated based on similar operations or historical data. Survey data are subject to non-sampling errors such as omissions and mistakes in reporting and in processing the data. While these errors cannot be measured directly, they are minimized by carefully reviewing all reported data for consistency and reasonableness.

Egg-type chicks hatched are comprised of all chicks of egg-type domesticated breeds including males, chicks destined for hatchery supply flocks, and research purposes. The relationship of chicks hatched to chicken inventory and poultry marketings are carefully monitored. The disposition of egg-type chicks hatched prior to placement into the laying flock can vary significantly, which can make comparisons to changes in layer inventory inconsistent over time.

Intended placement data, reported by leading breeders, include pullet chicks expected from eggs sold the preceding month. The breeders in this report account for a large percentage of replacement pullets for hatchery supply flocks. Production of replacement pullets by these breeders provide an indication of the potential number of pullets available for addition to hatchery egg supply flocks several months before the pullets will actually move into the flocks.

