

Chickens and Eggs



United States
Department of
Agriculture

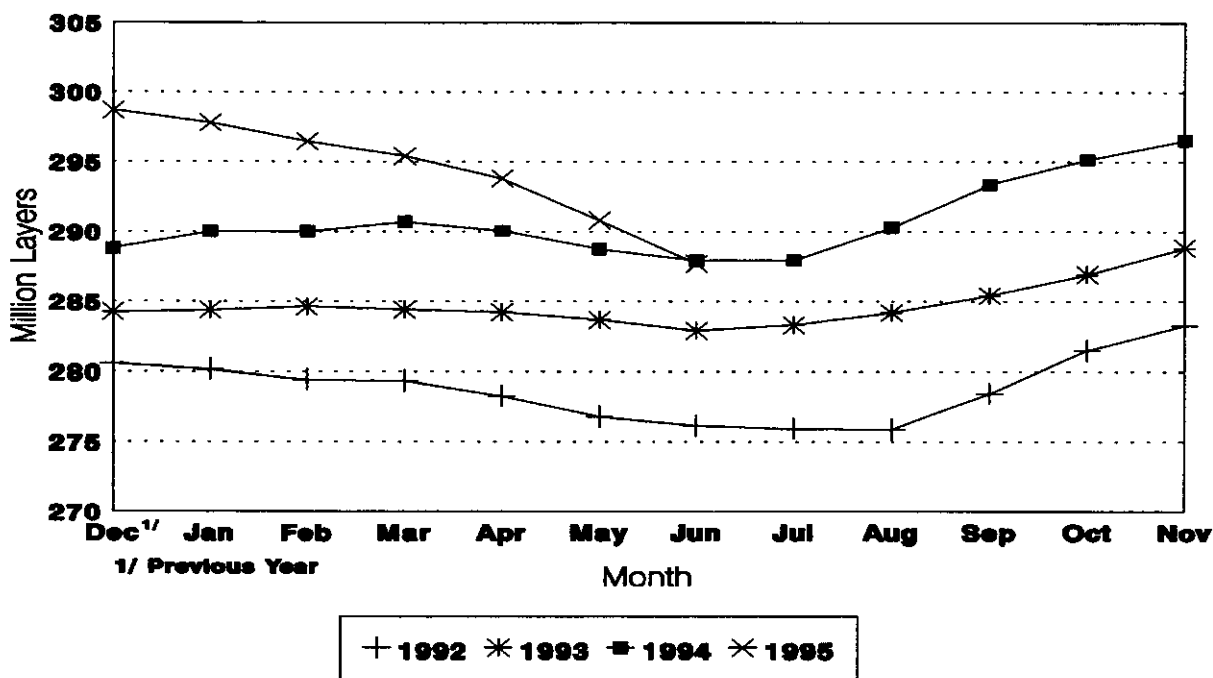
Washington, D.C.

Released July 25, 1995, by the Agricultural Statistics Board. Estimates refer to May, June and July 1995.

June Egg Production Up Slightly

U.S. egg production totaled 6.00 billion during June 1995, up slightly from the 5.99 billion produced June 1994. Production included 5.05 billion table eggs and 950 million hatching egg type, of which 891 million were broiler-type and 59.0 million were egg-type. The total number of layers during June 1995 averaged 288 million, down fractionally from the average number of layers during June 1994. June egg production per 100 layers was 2,084 eggs, compared with 2,081 in June 1994.

Average Number of Layers United States, 1992 - 95



For information call Joel D. Moore at (202) 720-3244. Office hours are 8:00 a.m. to 4:30 p.m. ET.

All layers in the U.S. on July 1, 1995, totaled 287 million, the same as a year ago. The 287 million layers consisted of 235 million layers producing table or commercial type eggs, 48.9 million layers producing broiler-type hatching eggs, and 2.71 million layers producing egg-type hatching eggs. Rate of lay per day on July 1, 1995, averaged 69.5 eggs per 100 layers, up slightly from the 69.4 eggs a year ago.

Laying flocks in the 30 major egg production States produced 5.67 billion eggs during June, up slightly from June 1994. The average number of layers during June, at 272 million, was also up only slightly from the year earlier.

Individual State estimates are available for the 30 major egg producing States. These States are listed on page 8 of this release and account for approximately 96 percent of the total U.S. egg production. Production for the other States are grouped into an "Other States" category and combined with the 30 States published individually to obtain a U.S. estimate. Individual State estimates for "Other States" are available annually in the "Layers and Egg Production" report.

Egg-Type Chicks Hatched Up 4 Percent

Egg-type chicks **hatched** during June totaled 33.4 million, up 4 percent from June 1994. **Eggs in incubators** totaled 26.6 million on July 1, 1995, down slightly from a year ago.

Domestic placements of **egg-type pullet chicks for future hatchery supply flocks** by leading breeders totaled 234,000 during June 1995, down 8 percent from the 254,000 of June 1994.

Broiler Hatch Up 3 Percent

The June 1995 **hatch** of broiler-type chicks, at 669 million, was 3 percent above June of the previous year. There were 556 million **eggs in incubators** on July 1, 1995, up 4 percent from a year earlier.

Leading breeders placed 6.18 million **broiler-type pullet chicks for future domestic hatchery supply flocks** during June 1995, up 5 percent from June 1994.

For information call Tom Kruchten at (202) 690-4870

Layers: Average Number During the Month,
United States, 1992-1995 1/

Month	1992	1993	1994	1995
1,000 Layers				
Dec 2/	280,572	284,267	288,832	298,709
Jan	280,171	284,398	290,041	297,805
Feb	279,450	284,638	290,047	296,477
Mar	279,373	284,405	290,719	295,422
Apr	278,284	284,234	290,073	293,824
May	276,790	283,694	288,784	290,837
Jun	276,142	282,914	287,974	287,744
Jul	275,953	283,324	287,990	
Aug	275,891	284,192	290,321	
Sep	278,461	285,418	293,381	
Oct	281,573	286,948	295,172	
Nov	283,305	288,875	296,547	

1/ Data are for chart on cover page.

2/ December preceding year.

Eggs: Production During the Month by Type,
United States, 1994-95

Month	Total Eggs		Table Eggs		Hatching Eggs	
	1994	1995	1994	1995	1994	1995
Million Eggs						
Dec 1/	6,264	6,519	5,388	5,568	876	951
Jan	6,186	6,374	5,293	5,418	893	956
Feb	5,598	5,720	4,775	4,856	823	864
Mar	6,320	6,448	5,404	5,490	916	958
Apr	6,073	6,173	5,177	5,234	896	939
May	6,189	6,244	5,249	5,264	940	980
Jun	5,992	5,997	5,085	5,047	907	950
Jul	6,205		5,269		936	
Aug	6,272		5,336		936	
Sep	6,125		5,218		907	
Oct	6,377		5,446		931	
Nov	6,265		5,358		907	
During Year:	73,866	43,475	62,998	36,877	10,868	6,598

1/ December preceding year.

Eggs and Layers: Layers on Hand and Eggs Produced by Type,
and Forced Molt, United States, May-June 1994-95

Item	1994	1995 1/	1995 as % of 1994
Layers During May (1,000)			
All Layers	288,784	290,837	101
Table Egg Type	238,185	238,537	100
Hatching Egg Type	50,599	52,300	103
Broiler-Type Hatching	47,823	49,477	103
Egg-Type Hatching	2,776	2,823	102
Eggs per 100 Layers During May (Number)			
All Layers	2.143	2.147	100
Table Egg Type	2.204	2.207	100
Hatching Egg Type	1.858	1.874	101
Broiler-Type Hatching	1.834	1.847	101
Egg-Type Hatching	2.269	2.338	103
Eggs Produced During May (Million)			
All Layers	6.189	6.244	101
Table Egg Type	5.249	5.264	100
Hatching Egg Type	940	980	104
Broiler-Type Hatching	877	914	104
Egg-Type Hatching	63	66	105
Layers on Jun 1 (1,000)			
All Layers	288,398	288,623	100
Table Egg Type	237,831	236,670	100
Hatching Egg Type	50,567	51,953	103
Broiler-Type Hatching	47,781	49,174	103
Egg-Type Hatching	2,786	2,779	100
Eggs per 100 Layers on Jun 1 (Number)			
All Layers	69.2	69.4	100
Table Egg Type	71.2	71.3	100
Hatching Egg Type	60.0	60.8	101
Broiler-Type Hatching	59.1	59.9	101
Egg-Type Hatching	75.3	75.3	100
Forced Molt Layers, Jun 1			
Percent Being Molted	5.6	6.0	107
Percent with Molt Completed	21.4	22.9	107

1/ Revised.

Eggs and Layers: Layers on Hand and Eggs Produced by Type,
and Forced Molt, United States, June-July 1994-95

Item	1994	1995 1/	1995 as % of 1994
Layers During Jun (1,000)			
All Layers	287,974	287,744	100
Table Egg Type	237,376	235,929	99
Hatching Egg Type	50,598	51,815	102
Broiler-Type Hatching	47,837	49,065	103
Egg-Type Hatching	2,761	2,750	100
Eggs per 100 Layers During Jun (Number)			
All Layers	2,081	2,084	100
Table Egg Type	2,142	2,139	100
Hatching Egg Type	1,793	1,833	102
Broiler-Type Hatching	1,769	1,816	103
Egg-Type Hatching	2,209	2,145	97
Eggs Produced During Jun (Million)			
All Layers	5,992	5,997	100
Table Egg Type	5,085	5,047	99
Hatching Egg Type	907	950	105
Broiler-Type Hatching	846	891	105
Egg-Type Hatching	61	59	97
Layers on Jul 1 (1,000)			
All Layers	287,454	286,821	100
Table Egg Type	236,856	235,168	99
Hatching Egg Type	50,598	51,653	102
Broiler-Type Hatching	47,876	48,946	102
Egg-Type Hatching	2,722	2,707	99
Eggs per 100 Layers on Jul 1 (Number)			
All Layers	69.4	69.5	100
Table Egg Type	71.4	71.3	100
Hatching Egg Type	59.8	61.4	103
Broiler-Type Hatching	58.9	60.8	103
Egg-Type Hatching	74.2	73.2	99
Forced Molt Layers, Jul 1			
Percent Being Molted	5.0	4.9	98
Percent with Molt Completed	22.4	23.1	103

1/ Preliminary.

Eggs and Layers: Layers on Hand and Eggs Produced by Type, and Forced Molt, May-June, 30 Selected States, 1994-95 1/

Item	1994	1995 2/	1995 as % of 1994
Layers During May (1,000)			
All Layers	272,400	274,955	101
Table Egg Type	225,063	226,165	100
Hatching Egg Type	47,337	48,790	103
Broiler-Type Hatching	44,722	46,047	103
Egg-Type Hatching	2,615	2,743	105
Eggs per 100 Layers During May (Number)			
All Layers	2,142	2,146	100
Table Egg Type	2,202	2,206	100
Hatching Egg Type	1,859	1,867	100
Broiler-Type Hatching	1,834	1,839	100
Egg-Type Hatching	2,294	2,333	102
Eggs Produced During May (Million)			
All Layers	5,836	5,900	101
Table Egg Type	4,956	4,989	101
Hatching Egg Type	880	911	104
Broiler-Type Hatching	820	847	103
Egg-Type Hatching	60	64	107
Layers on Jun 1 (1,000)			
All Layers	272,060	273,001	100
Table Egg Type	224,752	224,537	100
Hatching Egg Type	47,308	48,464	102
Broiler-Type Hatching	44,669	45,761	102
Egg-Type Hatching	2,639	2,703	102
Eggs per 100 Layers on Jun 1 (Number)			
All Layers	69.2	69.3	100
Table Egg Type	71.1	71.2	100
Hatching Egg Type	60.0	60.5	101
Broiler-Type Hatching	59.1	59.6	101
Egg-Type Hatching	75.0	75.0	100
Forced Molt Layers, Jun 1			
Percent Being Molted	5.5	6.1	111
Percent with Molt Completed	21.5	22.9	107
Pullets Less Than 20 Weeks of Age, Jun 1 (1,000)	77,387	72,384	94
Pullets Added During May (1,000)	19,872	18,725	94
Layers Sold During May (1,000)	15,928	17,728	111
Layers Died, Destroyed, or Disappeared For Any Reason During May (1,000)	2,713	3,133	115

1/ Revised.

2/ The 30 States are listed in the table on page 8.

Eggs and Layers: Layers on Hand and Eggs Produced by Type, and Forced Molt, June-July, 30 Selected States, 1994-95 1/

Item	1994	1995 2/	1995 as % of 1994
Layers During Jun (1,000)			
All Layers	271,871	272,103	100
Table Egg Type	224,471	223,760	100
Hatching Egg Type	47,400	48,343	102
Broiler-Type Hatching	44,772	45,675	102
Egg-Type Hatching	2,628	2,668	102
Eggs per 100 Layers During Jun (Number)			
All Layers	2.077	2.085	100
Table Egg Type	2.138	2.139	100
Hatching Egg Type	1.791	1,831	102
Broiler-Type Hatching	1.767	1.811	102
Egg-Type Hatching	2.207	2,174	99
Eggs Produced During Jun (Million)			
All Layers	5.648	5,672	100
Table Egg Type	4,799	4,787	100
Hatching Egg Type	849	885	104
Broiler-Type Hatching	791	827	105
Egg-Type Hatching	58	58	100
Layers on Jul 1 (1,000)			
All Layers	271,599	271,172	100
Table Egg Type	224,132	222,969	99
Hatching Egg Type	47,467	48,203	102
Broiler-Type Hatching	44,861	45,583	102
Egg-Type Hatching	2,606	2,620	101
Eggs per 100 Layers on Jul 1 (Number)			
All Layers	69.2	69.5	100
Table Egg Type	71.3	71.3	100
Hatching Egg Type	59.5	61.4	103
Broiler-Type Hatching	58.7	60.7	103
Egg-Type Hatching	73.7	73.1	99
Forced Molt Layers, Jul 1			
Percent Being Molted	5.1	4.9	96
Percent with Molt Completed	22.4	23.3	104
Pullets Less Than 20 Weeks of Age, Jul 1 (1,000)	77,821	69,366	89
Pullets Added During Jun (1,000)	20,366	21,025	103
Layers Sold During Jun (1,000)	17,097	17,450	102
Layers Died, Destroyed, or Disappeared For Any Reason During Jun (1,000)	3,221	3,321	103

1/ Preliminary.

2/ The 30 States are listed in the table on page 8.

Layers and Eggs: Layers on Hand and Eggs Produced by State
and United States, During May 1994-95 1/

State	Table Egg Layers in Flocks 30,000 and Above		All Layers 2/		Eggs per 100 for All Layers 2/	
	1994	1995	1994	1995	1994	1995
	1,000				Number	
AL	4,979	4,523	11,469	11,460	2,014	1,990
AR	7,018	5,920	17,012	15,999	1,952	1,919
CA	25,233	24,348	25,900	24,893	2,127	2,141
CO	2,629	2,448	3,190	2,983	2,069	2,213
CT	3,385	3,379	3,588	3,561	2,202	2,218
FL	8,688	7,930	9,451	8,597	2,201	2,233
GA	10,337	9,589	18,068	17,306	2,048	2,080
HI	749	711	827	760	2,012	2,034
IL	2,918	2,595	3,103	2,795	2,224	2,147
IN	19,808	20,445	20,664	21,303	2,197	2,187
IA	13,643	14,778	14,426	15,656	2,190	2,159
ME	4,998	4,810	5,173	4,972	2,358	2,333
MD	2,558	3,362	3,027	3,899	2,279	2,231
MI	4,900	4,938	5,200	5,216	2,254	2,263
MN	9,293	10,283	10,151	11,143	2,167	2,145
MS	2,627	2,299	6,460	6,247	2,043	2,017
MO	5,925	5,770	6,551	6,670	2,045	2,174
NE	7,700	8,875	7,850	9,025	2,117	2,229
NY	3,338	3,374	3,670	3,711	2,289	2,290
NC	6,524	6,232	13,983	13,710	1,931	1,955
OH	20,865	21,676	21,240	22,058	2,321	2,298
OK	2,000	2,023	3,605	3,761	1,914	2,021
OR	2,503	2,493	2,697	2,698	2,225	2,372
PA	19,080	19,465	20,435	20,810	2,276	2,268
SC	4,061	4,069	5,098	5,040	2,275	2,222
SD	1,730	1,608	2,008	1,855	2,120	2,226
TX	12,344	12,548	15,601	15,951	2,064	2,019
VA	1,547	1,580	3,781	3,815	2,063	2,018
WA	4,624	5,349	4,866	5,631	2,281	2,255
WI	2,798	2,900	3,306	3,430	2,178	2,099
30 Sts	218,802	220,320	272,400	274,955	2,142	2,146
Oth Sts 3/	11,672	11,072	16,384	15,882	2,155	2,166
US	230,474	231,392	288,784	290,837	2,143	2,147

1/ 1995 revised.

2/ Includes all layers and eggs produced in both table egg and hatching egg flocks regardless of size.

3/ Estimates for individual States are not available.

Layers and Eggs: Layers on Hand and Eggs Produced by State
and United States, During June 1994-95 1/

State	Table Egg Layers in Flocks 30,000 and Above		All Layers 2/		Eggs per 100 for All Layers 2/	
	1994	1995	1994	1995	1994	1995
	1,000				Number	
AL	5,034	4,661	11,485	11,408	1,942	1,946
AR	6,820	5,726	16,757	15,894	1,928	1,869
CA	24,944	23,615	25,600	24,145	2,094	2,096
CO	2,583	2,448	3,150	3,014	2,032	2,090
CT	3,497	3,349	3,701	3,523	2,108	2,157
FL	8,850	8,053	9,583	8,708	2,118	2,170
GA	9,929	9,286	17,776	16,922	1,946	1,962
HI	766	720	844	769	1,914	1,932
IL	2,715	2,671	2,891	2,879	2,179	2,049
IN	19,716	20,177	20,561	21,013	2,145	2,127
IA	13,760	14,890	14,550	15,775	2,131	2,098
ME	4,927	4,801	5,098	4,960	2,295	2,238
MD	2,605	3,247	3,122	3,770	2,178	2,202
MI	4,902	4,845	5,201	5,116	2,169	2,205
MN	9,195	10,085	10,068	10,943	2,116	2,111
MS	2,477	2,246	6,337	6,057	1,957	1,948
MO	6,075	5,750	6,711	6,646	2,086	2,107
NE	7,825	8,925	7,975	9,075	2,061	2,103
NY	3,360	3,401	3,685	3,730	2,252	2,306
NC	6,501	5,954	13,853	13,458	1,870	1,910
OH	20,832	21,308	21,216	21,691	2,225	2,227
OK	1,965	2,010	3,585	3,715	1,813	1,992
OR	2,466	2,561	2,654	2,752	2,185	2,326
PA	19,245	19,270	20,585	20,611	2,191	2,198
SC	3,950	3,875	4,968	4,841	2,194	2,190
SD	1,745	1,608	2,025	1,855	2,007	2,235
TX	12,319	12,569	15,651	15,951	1,974	1,969
VA	1,575	1,674	3,850	3,865	1,974	1,966
WA	4,667	5,305	4,913	5,562	2,259	2,211
WI	2,963	2,928	3,476	3,455	2,071	2,055
30 Sts	218,208	217,958	271,871	272,103	2,077	2,085
Oth Sts 3/	11,501	10,869	16,103	15,641	2,130	2,078
US	229,709	228,827	287,974	287,744	2,081	2,084

1/ 1995 preliminary.

2/ Includes all layers and eggs produced in both table egg and hatching egg flocks regardless of size.

3/ Estimates for individual States are not available.

Egg Production: By Type, State, and United States.
May 1994-95 1/

State	Total Production		Table Eggs 2/		Hatching Eggs 2/	
	1994	1995	1994	1995	1994	1995
	Million Eggs					
AL	231	228	113	100	118	128
AR	332	307	154	125	178	182
CA	551	533				
CO	66	66				
CT	79	79				
FL	208	192	191	180	17	12
GA	370	360	224	211	146	149
HI	17	16	17	16	0	0
IL	69	60	68	59	1	1
IN	454	466	443	456	11	10
IA	316	338				
ME	122	116				
MD	69	87	61	78	8	9
MI	117	118				
MN	220	239	211	229	9	10
MS	132	126	60	53	72	73
MO	134	145				
NE	166	201	166	201	0	0
NY	84	85				
NC	270	268	144	140	126	128
OH	493	507				
OK	69	76	45	49	24	27
OR	60	64	59	62	1	2
PA	465	472	448	454	17	18
SC	116	112	97	94	19	18
SD	43	41	43	41	0	0
TX	322	322	276	271	46	51
VA	78	77	38	37	40	40
WA	111	127				
WI	72	72				
30 Sts	5,836	5,900	4,956	4,989	880	911
Oth Sts 3/	353	344	293	275	60	69
US	6,189	6,244	5,249	5,264	940	980

1/ 1995 revised.

2/ Data by type of flock not shown for some States to avoid disclosing individual operations.

3/ Estimates for individual States are not available.

Egg Production: By Type, State, and United States,
June 1994-95 1/

State	Total Production		Table Eggs 2/		Hatching Eggs 2/	
	1994	1995	1994	1995	1994	1995
	Million Eggs					
AL	223	222	109	101	114	121
AR	323	297	150	114	173	183
CA	536	506				
CO	64	63				
CT	78	76				
FL	203	189	186	177	17	12
GA	346	332	203	188	143	144
HI	16	15	16	15	0	0
IL	63	59	62	58	1	1
IN	441	447	431	438	10	9
IA	310	331				
ME	117	111				
MD	68	83	60	75	8	8
MI	113	113				
MN	213	231	204	221	9	10
MS	124	118	55	49	69	69
MO	140	140				
NE	164	191	164	191	0	0
NY	83	86				
NC	259	257	140	132	119	125
OH	472	483				
OK	65	74	42	47	23	27
OR	58	64	56	62	2	2
PA	451	453	435	437	16	16
SC	109	106	91	88	18	18
SD	41	41	41	41	0	0
TX	309	314	265	264	44	50
VA	76	76	37	37	39	39
WA	111	123				
WI	72	71				
30 Sts	5,648	5,672	4,799	4,787	849	885
Oth Sts 3/	344	325	286	260	58	65
US	5,992	5,997	5,085	5,047	907	950

1/ 1995 preliminary.

2/ Data by type of flock not shown for some States to avoid disclosing individual operations.

3/ Estimates for individual States are not available.

Forced Molt: Percent of All Layers by Month,
United States, 1994-95 1/

Month	Percent Being Molted		Percent with Molt Completed	
	1994	1995	1994	1995
	Percent			
Jan	4.5	4.6	22.4	23.8
Feb	5.4	6.4	21.4	23.6
Mar	3.7	4.8	21.1	24.0
Apr	2.7	3.4	21.0	23.7
May	5.6	5.8	20.2	22.3
Jun	5.6	6.0	21.4	22.9
Jul	5.0	4.9	22.4	23.1
Aug				
Sep				
Oct				
Nov				
Dec				

1/ As of first of month.

Forced Molt: Percent of All Layers by State
and United States, 1994-95 1/

State	July			
	Percent Being Molted		Percent with Molt Completed	
	1994	1995	1994	1995
	Percent			
AL	2.5	3.5	16.0	13.0
AR	4.5	4.0	11.0	13.5
CA	10.5	11.5	46.0	44.0
CO	8.0	4.0	23.5	17.5
CT	3.0	.0	13.5	15.0
FL	8.0	5.5	35.0	37.0
GA	5.0	4.0	19.0	19.0
HI	4.0	6.5	51.5	51.5
IL	6.0	11.0	22.5	29.5
IN	7.0	3.5	28.5	29.0
IA	4.0	8.0	27.5	30.5
ME	.0	.5	.5	1.0
MD	2.5	10.0	33.5	27.0
MI	1.5	.0	12.0	22.5
MN	5.0	3.5	26.5	27.5
MS	4.0	3.5	13.5	14.5
MO	1.0	1.5	23.5	21.0
NE	5.0	6.5	15.0	21.0
NY	1.5	1.0	9.5	8.0
NC	4.0	3.0	15.5	13.0
OH	3.5	2.5	10.0	16.0
OK	4.0	3.0	6.0	13.0
OR	3.0	8.5	26.0	37.0
PA	5.5	2.0	15.0	23.0
SC	6.5	7.0	25.0	32.0
SD	9.0	2.0	45.0	15.5
TX	6.0	8.0	28.5	18.0
VA	3.5	4.5	13.5	15.0
WA	4.5	6.5	41.0	40.5
WI	5.0	8.0	23.0	24.0
30 Sts	5.1	4.9	22.4	23.3
Oth Sts 2/	3.9	4.9	23.1	20.3
US	5.0	4.9	22.4	23.1

1/ As of first of month.

2/ Estimates for individual States are not available.

Hatchery Production: Eggs in Incubators, Chicks Hatched,
and Placements by Type, United States, June-July 1994-95

Item	1994	1995	1995 as % of 1994
	----- 1,000	-----	Percent
Egg-Type			
Eggs in Incubators on Jul 1	26,659	26,644	100
Chicks Hatched During Jun	31,986	33,392	104
Chicks Hatched Jan thru Jun	200,780	201,854	101
<i>Pullets Hatched During Jun for Intended:</i>			
Placements in Hatchery Supply Flocks	254	234	92
7-18 Month Earlier 1/	2,690	3,156	117
Broiler-Type			
Eggs in Incubators on Jul 1	536,393	555,608	104
Chicks Hatched During Jun	647,163	669,390	103
Chicks Hatched Jan thru Jun	3,749,573	3,959,097	106
<i>Pullets Hatched During Jun for Intended:</i>			
Placements in Hatchery Supply Flocks	5,911	6,178	105
7-14 Months Earlier 2/	44,746	48,943	109

1/ 1995 includes pullet chicks hatched Dec 1993 through Nov 1994.

2/ 1995 includes pullet chicks hatched Apr 1994 through Nov 1994.

Egg-Type Eggs in Incubators: By Region and United States,
July 1, 1994-95

Geographic Division	1994	1995	1995 as % of 1994
	----- 1,000	-----	Percent
North Atlantic	4,206	4,188	100
E North Central	8,085	7,103	88
W North Central	4,889	5,295	108
South Atlantic	3,065	4,132	135
South Central	2,895	2,904	100
West	3,519	3,022	86
US	26,659	26,644	100

Regional Listing:

North Atlantic = CT, ME, MA, NH, NJ, NY, PA, RI, VT.

E North Central = IL, IN, MI, OH, WI.

W North Central = IA, KS, MN, MO, NE, ND, SD.

South Atlantic = DE, FL, GA, MD, NC, SC, VA, WV.

South Central = AL, AR, KY, LA, MS, OK, TN, TX.

West = AK, AZ, CA, CO, HI, ID, MT, NM, NV, OR, UT, WA, WY.

Egg-Type Chicks Hatched: By State and United States,
June 1994-95

State	June			Jan-Jun		
	1994	1995	1995 as % of 1994	1994	1995	1995 as % of 1994
	----- 1,000 -----		Percent	----- 1,000 -----		Percent
AR	978	451	46	6,810	6,277	92
FL	1,001	1,204	120	6,528	6,177	95
GA	1,935	2,069	107	10,453	11,197	107
IN	6,198	7,233	117	39,009	42,597	109
IA	2,648	2,369	89	14,545	14,617	100
KS	283	301	106	1,672	1,433	86
MN	1,810	2,397	132	12,367	12,966	105
MO	534	499	93	3,328	2,906	87
PA	4,507	3,765	84	27,229	20,859	77
Oth Sts 1/	12,092	13,104	108	78,839	82,825	105
US	31,986	33,392	104	200,780	201,854	101

1/ Not published separately to avoid disclosing data for individual operations.

Egg-Type Chicks Hatched: By Month, United States, 1993-95

Month	By Months			Cumulative		
	1993	1994	1995 as % of 1994	1993	1994	1995 as % of 1994
	----- 1,000 -----		Percent	----- 1,000 -----		Percent
Jan	34,855	33,212	95	34,855	33,212	95
Feb	34,009	31,086	102	68,864	64,298	98
Mar	38,264	33,492	104	107,128	97,790	100
Apr	37,163	35,668	96	144,291	133,458	99
May	36,742	35,336	103	181,033	168,794	100
Jun	35,587	31,986	104	216,620	200,780	101
Jul	33,980	29,613		250,600	230,393	
Aug	31,455	31,295		282,055	261,688	
Sep	31,775	30,873		313,830	292,561	
Oct	31,634	31,766		345,464	324,327	
Nov	30,074	25,475		375,538	349,802	
Dec	30,448	29,072		405,986	378,874	

Intended Placements: Egg-Type Pullet Chicks for Hatchery Supply
Flocks by Month and Total, United States, 1993-95 1/

Month	Pullet Chicks Hatched			1995 as % of 1994	Cumulative Potential Placements Relative to Current Supply Flocks 7-18 Months Earlier 2/		
	1993	1994	1995		1994	1995	1996
	----- 1,000 -----			Percent	----- 1,000 -----		
Jan	193	197	236	120	2,806	2,916	3,093
Feb	119	186	251	135	2,812	2,937	
Mar	268	259	356	137	2,754	3,027	
Apr	251	277	317	114	2,787	3,072	
May	275	334	193	58	2,801	3,091	
Jun	267	254	234	92	2,690	3,156	
Jul	243	264			2,782	3,013	
Aug	219	309			2,786	3,052	
Sep	270	315			2,853	3,117	
Oct	251	270			2,844	3,214	
Nov	158	223			2,870	3,254	
Dec	268	125			2,929	3,113	
Total	2,782	3,013					

1/ Reported by leading breeders. Coverage may not be 100 percent. Includes expected pullet chicks from eggs sold during the preceding month at the rate of 125 pullet chicks per 30 dozen case of eggs.

2/ For June 1995, includes breeder pullet chicks hatched Dec 1993 through Nov 1994.

Broiler-Type Eggs in Incubators: By Region
and United States, July 1, 1994-95

Geographic Division	1994	1995	1995 as % of 1994
		----- 1,000 -----	
North Atlantic	11,258	11,620	103
E North Central	7,025	7,449	106
W North Central	14,612	17,312	118
South Atlantic	213,941	221,027	103
South Central	266,721	275,399	103
West	22,836	22,801	100
US	536,393	555,608	104

Broiler-Type Chicks Hatched: Number by State
and United States, June 1994-95

State	June			Jan-Jun		
	1994	1995	1995 as % of 1994	1994	1995	1995 as % of 1994
	1,000		Percent	1,000		Percent
AL	90,646	90,822	100	530,897	550,801	104
AR	105,129	104,308	99	618,228	615,413	100
DE	16,573	16,855	102	92,787	100,054	108
FL	11,703	10,776	92	72,689	60,097	83
GA	91,107	97,701	107	530,107	573,750	108
MD	31,087	31,060	100	190,217	188,479	99
MS	53,341	54,213	102	301,993	323,691	107
NC	60,399	63,122	105	350,275	374,623	107
PA	12,097	11,472	95	69,135	67,028	97
SC	15,065	15,161	101	89,417	91,991	103
TX	37,509	39,847	106	213,293	232,699	109
VA	23,258	23,774	102	132,715	142,075	107
CA TN & WV	33,808	34,952	103	195,706	203,639	104
15 Sts 1/	581,722	594,063	102	3,387,459	3,524,340	104
OR & WA	6,017	5,877	98	35,611	34,158	96
Oth Sts 2/	59,424	69,450	117	326,503	400,599	123
US	647,163	669,390	103	3,749,573	3,959,097	106

1/ States in the weekly hatchery production estimating program.

2/ Not published separately to avoid disclosing data for individual operations.

Broiler Chicks Hatched: By Month, United States, 1993-95

Month	By Months				Cumulative			
	1993	1994	1995	1995 as % of 1994	1993	1994	1995	1995 as % of 1994
	1,000			Percent	1,000			Percent
Jan	598,798	618,112	661,389	107	598,798	618,112	661,389	107
Feb	547,831	558,590	598,962	107	1,146,629	1,176,702	1,260,351	107
Mar	622,983	639,967	677,334	106	1,769,612	1,816,669	1,937,685	107
Apr	600,861	627,051	662,372	106	2,370,473	2,443,720	2,600,057	106
May	634,371	658,690	689,650	105	3,004,844	3,102,410	3,289,707	106
Jun	619,453	647,163	669,390	103	3,624,297	3,749,573	3,959,097	106
Jul	619,009	646,456			4,243,306	4,396,029		
Aug	612,381	653,710			4,855,687	5,049,739		
Sep	582,781	625,867			5,438,468	5,675,606		
Oct	584,260	617,957			6,022,728	6,293,563		
Nov	574,803	597,276			6,597,531	6,890,839		
Dec	623,237	658,914			7,220,768	7,549,753		

Intended Placements: Broiler-Type Pullet Chicks for Hatchery
Supply Flocks by Month and Total, 1993-95 1/

Month	Pullet Chicks Hatched			1995 as % of 1994	Cumulative Potential Placements Relative to Current Supply Flocks 7-14 Months Earlier 2/		
	1993	1994	1995		1994	1995	1996
	1,000			Percent	1,000		
US Place- ments							
Jan	5,664	5,989	5,748	96	42,665	47,272	48,255
Feb	4,549	5,518	5,481	99	43,906	47,859	
Mar	5,678	6,301	6,161	98	44,486	48,254	
Apr	5,531	6,101	6,319	104	43,943	48,601	
May	5,944	6,266	6,135	98	44,907	49,425	
Jun	5,568	5,911	6,178	105	44,746	48,943	
Jul	5,967	6,104			44,884	49,255	
Aug	5,585	6,064			44,929	48,737	
Sep	5,121	6,336			44,879	48,307	
Oct	5,513	6,342			45,213	48,364	
Nov	5,517	5,819			45,729	48,620	
Dec	5,669	6,413			46,874	48,419	
Annual Total	66,306	73,164					
Total Place- ments3/							
Jan	7,098	7,168	7,038	98			
Feb	5,664	6,829	7,176	105			
Mar	6,909	7,544	7,577	100			
Apr	6,420	7,234	7,835	108			
May	7,182	7,394	7,873	106			
Jun	6,723	7,153	7,485	105			
Jul	7,114	7,146					
Aug	6,587	7,290					
Sep	6,177	7,545					
Oct	6,634	7,959					
Nov	6,718	7,251					
Dec	6,949	7,908					
Annual Total	80,175	88,421					

- 1/ Reported by leading breeders. Coverage may not be 100 percent. Includes expected pullet chicks from eggs sold during the preceding month at the rate of 125 pullet chicks per 30 dozen case of eggs.
- 2/ For Jun 1995, includes breeder pullet chicks hatched Apr 1994 through Nov 1994.
- 3/ U.S. production of intended placements worldwide.

Procedures and Reliability

Data Sources: Primary data for the "Chickens and Eggs" report are from weekly and/or monthly questionnaires sent to producers. An attempt is made to collect information for layer and egg estimates from each known contractor and independent producer who has over 30,000 table egg layers. Coverage for operations with less than 30,000 table egg layers are estimated each month based on data reported in December. Approximately 900 contractors, independent egg producers, and started pullet operations are contacted each month. All known hatcheries, approximately 360, are contacted for information on a weekly and/or monthly basis.

Revisions: The previous month's estimates are subject to revision if late reports or corrected data indicates a different level. Additionally, revisions needed after the monthly report will be made at the end of the marketing year and published in the annual summaries of "Layers and Egg Production" and "Hatchery Production".

Procedures and Reliability: Operations are mailed a questionnaire and given adequate time to respond by mail. Those that do not respond are phoned. Great care is exercised to ensure that all operations are accounted for during each survey period. However, there are usually missing reports that must be accounted for in the estimates.

Sound statistical methodology is employed to derive estimates from the reported data. All data are checked for unusual values. All operations' data are compared to their own past operating profiles and also to trends from other operations. Data for missing operations are estimated based on similar operations or historical data. Survey data are subject to non-sampling errors such as omissions and mistakes in reporting and in processing. While these errors cannot be measured directly, they are minimized by reviewing all data for consistency and reasonableness.

Egg-type chicks hatched are comprised of all chicks of egg-type domesticated breeds including males and chicks destined for hatchery supply flocks and research purposes. The relationship of chicks hatched to chicken inventory and poultry marketings is carefully monitored. The disposition of egg-type chicks hatched prior to placement into the laying flock can vary significantly, which can make comparisons to changes in layer inventory inconsistent over time.

Intended placement data reported by leading breeders include pullet chicks expected from eggs sold the preceding month. The breeders in this report account for a large percentage of replacement pullets for hatchery supply flocks. Production of replacement pullets by these breeders indicates the number of pullets available to hatchery egg supply flocks several months before the pullets will actually move into the flocks.

The next "Chickens and Eggs" report will be released at 3 p.m. ET on August 25, 1995.

The United States Department of Agriculture (USDA) prohibits discrimination in its programs on the basis of race, color, national origin, sex, religion, age, disability, political beliefs, and marital or familial status. Persons with disabilities who require alternative means for communication of program information (braille, large print, audiotape, etc.) should contact the USDA Office of Communications at (202) 720-5881 (voice) or (202) 720-7808 (TDD).

To file a complaint, write the Secretary of Agriculture, USDA, Washington, D.C., 20250, or call (202) 720-7327 (voice) or (202) 720-1127 (TDD). USDA is an equal employment opportunity employer.

Want to subscribe? **Time to renew?**

Subscribe to **Chickens and Eggs** today! If you already subscribe to this timely periodical, note that expiration information about your subscription appears on the top line of your mailing label. **Expiration information will appear in one of two formats:** 1-PEC-2 (this means you have TWO issues remaining in your subscription) or APR95 (expiration date is April 1995). Disregard this notice if no renewal information appears. Call 1-800-999-6779, and tell us whether you want to subscribe or renew, or return this form to: **ERS-NASS, 341 Victory Drive, Herndon, VA 22070.**

Chickens and Eggs

- Yes! I want to **start** my subscription.
- Yes! I want to **renew** my subscription.

	<i>1 Year</i>	<i>2 Years</i>	<i>3 Years</i>
Domestic	<input type="checkbox"/> \$36.00	<input type="checkbox"/> \$70.00	<input type="checkbox"/> \$105.00
Foreign	<input type="checkbox"/> \$45.00	<input type="checkbox"/> \$87.50	<input type="checkbox"/> \$131.25

New subscribers:

Name: _____
Address: _____
City, State, Zip: _____
Daytime phone: (_____) _____

Renewals:

ATTACH MAILING LABEL HERE

Payment method:

- Bill me (domestic orders only). Use purchase orders, checks drawn on U.S. banks, cashier's checks, or international money orders. **Make payable to ERS-NASS.**
- Enclosed is \$_____.

Credit card orders: MasterCard Visa Total charges \$_____.

Credit card number:

Card expiration date:
Month/Year

**For fastest service, call our toll-free order desk 1-800-999-6779,
in the U.S. and Canada; other areas please call 703-834-0125,
or FAX this page to 703-834-0110.**