

Chickens and Eggs



United States
Department of
Agriculture

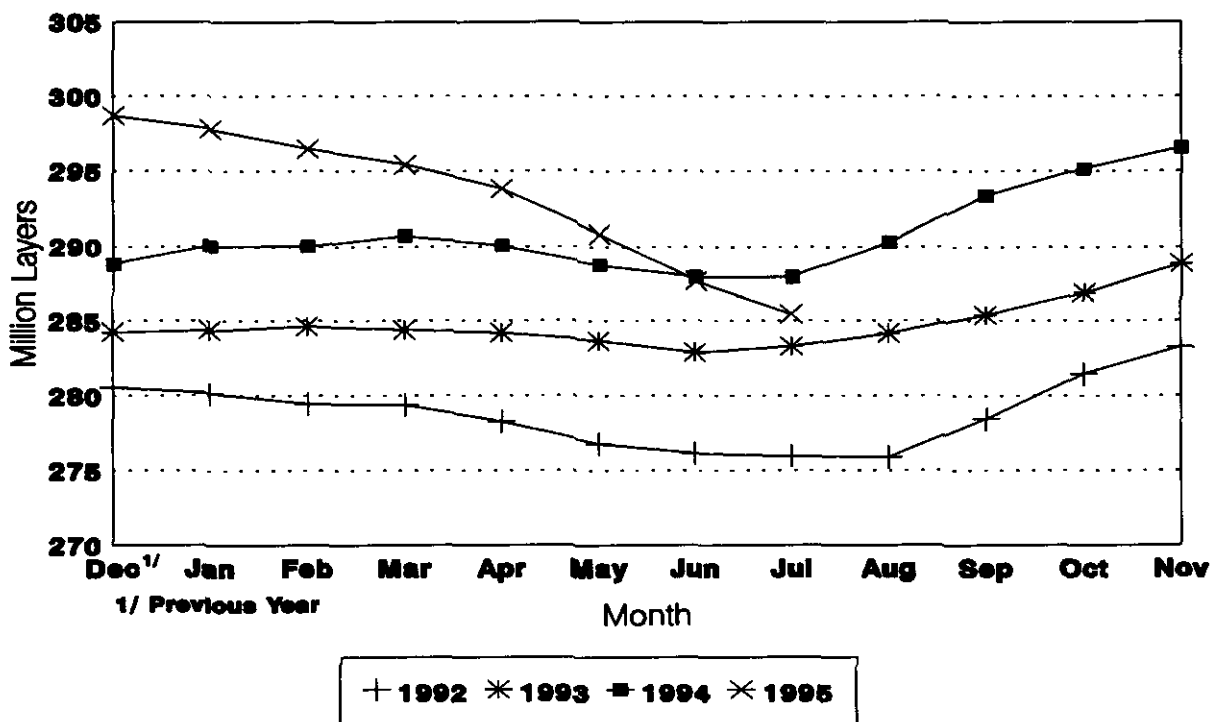
Washington, D.C.

Released August 25, 1995, by the National Agricultural Statistics Service (NASS), Agricultural Statistics Board, U.S. Department of Agriculture. For information on "Chickens and Eggs" call Tom Kruchten at (202) 690-4870, office hours 8:00 a.m. to 4:30 p.m. ET. For assistance with general agricultural statistics, information about NASS, its products or services, contact the NASS Information Hotline at 1-800-727-9540 or E-mail: NASS@AG.GOV. Estimates refer to June, July, and August 1995.

July Egg Production Down 1 Percent

U.S. egg production totaled 6.13 billion during July 1995, down 1 percent from the 6.21 billion produced July 1994. Production included 5.17 billion table eggs and 966 million hatching egg type, of which 903 million were broiler-type and 63.0 million were egg-type. The total number of layers during July 1995 averaged 285 million, down 1 percent from the average number of layers during July 1994. July egg production per 100 layers was 2,148 eggs, compared with 2,155 in July 1994.

Average Number of Layers United States, 1992 - 95



All layers in the U.S. on August 1, 1995, totaled 284 million, down 2 percent from a year ago. The 284 million layers consisted of 233 million layers producing table or commercial type eggs, 48.5 million layers producing broiler-type hatching eggs, and 2.72 million layers producing egg-type hatching eggs. Rate of lay per day on August 1, 1995, averaged 69.0 eggs per 100 layers, down 1 percent from the 69.5 eggs a year ago.

Laying flocks in the 30 major egg States produced 5.80 billion eggs during July, down 1 percent from July 1994. The average number of layers during July, at 270 million, was also down 1 percent from the year earlier.

Individual State estimates are available for the 30 major egg producing States. These States are listed on page 8 of this release and account for approximately 95 percent of the total U.S. egg production. Production for the other States are grouped into an "Other States" category and combined with the 30 States published individually to obtain a U.S. estimate. Individual State estimates for "Other States" are available annually in the "**Layers and Egg Production**" report.

Egg-Type Chicks Hatched Down 3 Percent

Egg-type chicks **hatched** during July totaled 28.7 million, down 3 percent from July 1994. **Eggs in incubators** totaled 26.6 million on August 1, 1995, down 2 percent from a year ago.

Domestic placements of **egg-type pullet chicks for future hatchery supply flocks** by leading breeders totaled 235,000 during July 1995, down 11 percent from the 264,000 of July 1994.

Broiler Hatch Up 4 Percent

The July 1995 **hatch** of broiler-type chicks, at 673 million, was 4 percent above July of the previous year. There were 558 million **eggs in incubators** on August 1, 1995, up 5 percent from a year earlier.

Leading breeders placed 6.30 million **broiler-type pullet chicks for future domestic hatchery supply flocks** during July 1995, up 3 percent from July 1994.

Layers: Average Number During the Month.
United States, 1992-1995 1/

Month	1992	1993	1994	1995
1,000 Layers				
Dec 2/	280,572	284,267	288,832	298,709
Jan	280,171	284,398	290,041	297,805
Feb	279,450	284,638	290,047	296,477
Mar	279,373	284,405	290,719	295,422
Apr	278,284	284,234	290,073	293,824
May	276,790	283,694	288,784	290,837
Jun	276,142	282,914	287,974	287,744
Jul	275,953	283,324	287,990	285,473
Aug	275,891	284,192	290,321	
Sep	278,461	285,418	293,381	
Oct	281,573	286,948	295,172	
Nov	283,305	288,875	296,547	

1/ Data are for chart on cover page.

2/ December preceding year.

Eggs: Production During the Month by Type.
United States, 1994-95

Month	Total Eggs		Table Eggs		Hatching Eggs	
	1994	1995	1994	1995	1994	1995
Million Eggs						
Dec 1/	6,264	6,519	5,388	5,568	876	951
Jan	6,186	6,374	5,293	5,418	893	956
Feb	5,598	5,720	4,775	4,856	823	864
Mar	6,320	6,448	5,404	5,490	916	958
Apr	6,073	6,173	5,177	5,234	896	939
May	6,189	6,244	5,249	5,264	940	980
Jun	5,992	5,997	5,085	5,047	907	950
Jul	6,205	6,132	5,269	5,166	936	966
Aug	6,272		5,336		936	
Sep	6,125		5,218		907	
Oct	6,377		5,446		931	
Nov	6,265		5,358		907	
During Year:	73,866	49,607	62,998	42,043	10,868	7,564

1/ December preceding year.

Eggs and Layers: Layers on Hand and Eggs Produced by Type,
and Forced Molt, United States, June-July 1994-95

Item	1994	1995 1/	1995 as % of 1994
Layers During Jun (1,000)			
All Layers	287,974	287,755	100
Table Egg Type	237,376	235,940	99
Hatching Egg Type	50,598	51,815	102
Broiler-Type Hatching	47,837	49,065	103
Egg-Type Hatching	2,761	2,750	100
Eggs per 100 Layers During Jun (Number)			
All Layers	2,081	2,084	100
Table Egg Type	2,142	2,139	100
Hatching Egg Type	1,793	1,833	102
Broiler-Type Hatching	1,769	1,816	103
Egg-Type Hatching	2,209	2,145	97
Eggs Produced During Jun (Million)			
All Layers	5,992	5,997	100
Table Egg Type	5,085	5,047	99
Hatching Egg Type	907	950	105
Broiler-Type Hatching	846	891	105
Egg-Type Hatching	61	59	97
Layers on Jul 1 (1,000)			
All Layers	287,454	286,843	100
Table Egg Type	236,856	235,190	99
Hatching Egg Type	50,598	51,653	102
Broiler-Type Hatching	47,876	48,946	102
Egg-Type Hatching	2,722	2,707	99
Eggs per 100 Layers on Jul 1 (Number)			
All Layers	69.4	69.5	100
Table Egg Type	71.4	71.3	100
Hatching Egg Type	59.8	61.4	103
Broiler-Type Hatching	58.9	60.8	103
Egg-Type Hatching	74.2	73.2	99
Forced Molt Layers, Jul 1			
Percent Being Molted	5.0	4.9	97
Percent with Molt Completed	22.4	23.1	103

1/ Revised.

Eggs and Layers: Layers on Hand and Eggs Produced by Type,
and Forced Molt, United States, July-August 1994-95

Item	1994	1995 1/	1995 as % of 1994
Layers During Jul (1,000)			
All Layers	287,990	285,473	99
Table Egg Type	237,097	234,039	99
Hatching Egg Type	50,893	51,434	101
Broiler-Type Hatching	48,205	48,716	101
Egg-Type Hatching	2,688	2,718	101
Eggs per 100 Layers During Jul (Number)			
All Layers	2,155	2,148	100
Table Egg Type	2,222	2,207	99
Hatching Egg Type	1,839	1,878	102
Broiler-Type Hatching	1,817	1,854	102
Egg-Type Hatching	2,232	2,318	104
Eggs Produced During Jul (Million)			
All Layers	6,205	6,132	99
Table Egg Type	5,269	5,166	98
Hatching Egg Type	936	966	103
Broiler-Type Hatching	876	903	103
Egg-Type Hatching	60	63	105
Layers on Aug 1 (1,000)			
All Layers	288,484	284,055	98
Table Egg Type	237,314	232,864	98
Hatching Egg Type	51,170	51,191	100
Broiler-Type Hatching	48,527	48,472	100
Egg-Type Hatching	2,643	2,719	103
Eggs per 100 Layers on Aug 1 (Number)			
All Layers	69.5	69.0	99
Table Egg Type	71.8	71.1	99
Hatching Egg Type	59.0	59.6	101
Broiler-Type Hatching	58.2	58.9	101
Egg-Type Hatching	74.4	73.0	98
Forced Molt Layers, Aug 1			
Percent Being Molted	4.5	4.1	91
Percent with Molt Completed	23.0	23.2	101

1/ Preliminary.

Eggs and Layers: Layers on Hand and Eggs Produced by Type, and Forced Molt, June-July, 30 Selected States, 1994-95 1/

Item	1994	1995 2/	1995 as % of 1994
Layers During Jun (1,000)			
All Layers	271,871	272,116	100
Table Egg Type	224,471	223,773	100
Hatching Egg Type	47,400	48,343	102
Broiler-Type Hatching	44,772	45,675	102
Egg-Type Hatching	2,628	2,668	102
Eggs per 100 Layers During Jun (Number)			
All Layers	2.077	2.084	100
Table Egg Type	2,138	2,139	100
Hatching Egg Type	1,791	1,831	102
Broiler-Type Hatching	1,767	1,811	102
Egg-Type Hatching	2.207	2.174	99
Eggs Produced During Jun (Million)			
All Layers	5,648	5,672	100
Table Egg Type	4,799	4,787	100
Hatching Egg Type	849	885	104
Broiler-Type Hatching	791	827	105
Egg-Type Hatching	58	58	100
Layers on Jul 1 (1,000)			
All Layers	271,599	271,198	100
Table Egg Type	224,132	222,995	99
Hatching Egg Type	47,467	48,203	102
Broiler-Type Hatching	44,861	45,583	102
Egg-Type Hatching	2,606	2,620	101
Eggs per 100 Layers on Jul 1 (Number)			
All Layers	69.2	69.5	100
Table Egg Type	71.3	71.3	100
Hatching Egg Type	59.5	61.4	103
Broiler-Type Hatching	58.7	60.7	103
Egg-Type Hatching	73.7	73.1	99
Forced Molt Layers, Jul 1			
Percent Being Molted	5.1	4.9	96
Percent with Molt Completed	22.4	23.3	104
Pullets Less Than 20 Weeks of Age, Jul 1 (1,000)	77,821	69,366	89
Pullets Added During Jun (1,000)	20,366	21,034	103
Layers Sold During Jun (1,000)	17,097	17,428	102
Layers Died, Destroyed, or Disappeared For Any Reason During Jun (1,000)	3,221	3,325	103

1/ Revised.

2/ The 30 States are listed in the table on page 8.

Eggs and Layers: Layers on Hand and Eggs Produced by Type, and Forced Molt, July-August, 30 Selected States, 1994-95 1/

Item	1994	1995 2/	1995 as % of 1994
Layers During Jul (1,000)			
All Layers	272,058	269,775	99
Table Egg Type	224,301	221,778	99
Hatching Egg Type	47,757	47,997	101
Broiler-Type Hatching	45,180	45,363	100
Egg-Type Hatching	2,577	2,634	102
Eggs per 100 Layers During Jul (Number)			
All Layers	2,150	2,150	100
Table Egg Type	2,218	2,209	100
Hatching Egg Type	1,832	1,877	102
Broiler-Type Hatching	1,811	1,852	102
Egg-Type Hatching	2,212	2,316	105
Eggs Produced During Jul (Million)			
All Layers	5,850	5,801	99
Table Egg Type	4,975	4,900	98
Hatching Egg Type	875	901	103
Broiler-Type Hatching	818	840	103
Egg-Type Hatching	57	61	107
Layers on Aug 1 (1,000)			
All Layers	272,487	268,316	98
Table Egg Type	224,455	220,545	98
Hatching Egg Type	48,032	47,771	99
Broiler-Type Hatching	45,494	45,132	99
Egg-Type Hatching	2,538	2,639	104
Eggs per 100 Layers on Aug 1 (Number)			
All Layers	69.3	69.1	100
Table Egg Type	71.6	71.2	99
Hatching Egg Type	58.8	59.6	101
Broiler-Type Hatching	57.9	58.8	102
Egg-Type Hatching	74.0	72.7	98
Forced Molt Layers, Aug 1			
Percent Being Molted	4.6	4.1	89
Percent with Molt Completed	23.0	23.3	101
Pullets Less Than 20 Weeks of Age, Aug 1 (1,000)	75,495	68,998	91
Pullets Added During Jul (1,000)	20,876	18,889	90
Layers Sold During Jul (1,000)	14,804	15,667	106
Layers Died, Destroyed, or Disappeared For Any Reason During Jul (1,000)	2,663	5,769	217

1/ Preliminary.

2/ The 30 States are listed in the table on page 8.

Layers and Eggs: Layers on Hand and Eggs Produced by State
and United States, During June 1994-95 1/

State	Table Egg Layers in Flocks 30,000 and Above		All Layers 2/		Eggs per 100 for All Layers 2/	
	1994	1995	1994	1995	1994	1995
	1,000				Number	
AL	5.034	4.661	11.485	11.408	1.942	1.946
AR	6.820	5.726	16.757	15.894	1.928	1.869
CA	24.944	23.615	25.600	24.145	2.094	2.096
CO	2.583	2.448	3.150	3.014	2.032	2.090
CT	3.497	3.361	3.701	3.536	2.108	2.149
FL	8.850	8.053	9.583	8.708	2.118	2.170
GA	9.929	9.286	17.776	16.922	1.946	1.962
HI	766	720	844	769	1.914	1.932
IL	2.715	2.671	2.891	2.879	2.179	2.049
IN	19.716	20.177	20.561	21.013	2.145	2.127
IA	13.760	14.890	14.550	15.775	2.131	2.098
ME	4.927	4.801	5.098	4.960	2.295	2.238
MD	2.605	3.247	3.122	3.770	2.178	2.202
MI	4.902	4.845	5.201	5.116	2.169	2.205
MN	9.195	10.085	10.068	10.943	2.116	2.111
MS	2.477	2.246	6.337	6.057	1.957	1.948
MO	6.075	5.750	6.711	6.646	2.086	2.107
NE	7.825	8.925	7.975	9.075	2.061	2.103
NY	3.360	3.401	3.685	3.730	2.252	2.306
NC	6.501	5.954	13.853	13.458	1.870	1.910
OH	20.832	21.308	21.216	21.691	2.225	2.227
OK	1.965	2.010	3.585	3.715	1.813	1.992
OR	2.466	2.561	2.654	2.752	2.185	2.326
PA	19.245	19.270	20.585	20.611	2.191	2.198
SC	3.950	3.875	4.968	4.841	2.194	2.190
SD	1.745	1.608	2.025	1.855	2.007	2.235
TX	12.319	12.569	15.651	15.951	1.974	1.969
VA	1.575	1.674	3.850	3.865	1.974	1.966
WA	4.667	5.305	4.913	5.562	2.259	2.211
WI	2.963	2.928	3.476	3.455	2.071	2.055
30 Sts	218.208	217.970	271.871	272.116	2.077	2.084
Oth Sts 3/	11.501	10.867	16.103	15.639	2.130	2.078
US	229.709	228.837	287.974	287.755	2.081	2.084

1/ 1995 revised.

2/ Includes all layers and eggs produced in both table egg and hatching egg flocks regardless of size.

3/ Estimates for individual States are not available.

Layers and Eggs: Layers on Hand and Eggs Produced by State
and United States, During July 1994-95 1/

State	Table Egg Layers in Flocks 30,000 and Above		All Layers 2/		Eggs per 100 for All Layers 2/	
	1994	1995	1994	1995	1994	1995
	1,000				Number	
AL	5,172	4,841	11,708	11,552	1,999	2,000
AR	6,690	5,651	16,618	15,723	1,938	1,959
CA	24,606	23,058	25,222	23,581	2,165	2,192
CO	2,629	2,450	3,189	3,015	2,070	2,189
CT	3,530	3,404	3,727	3,565	2,227	2,216
FL	8,988	8,143	9,686	8,774	2,230	2,222
GA	9,793	9,264	17,852	16,938	2,022	2,013
HI	753	732	831	781	2,012	2,015
IL	2,557	2,704	2,723	2,913	2,277	2,266
IN	19,778	19,547	20,634	20,389	2,191	2,197
IA	13,980	14,599	14,780	15,470	2,158	2,211
ME	4,862	4,855	5,032	5,008	2,385	2,256
MD	2,730	3,274	3,258	3,798	2,241	2,264
MI	4,854	4,865	5,150	5,138	2,334	2,275
MN	9,320	9,875	10,193	10,728	2,237	2,163
MS	2,363	2,310	6,302	5,992	2,015	1,986
MO	6,043	5,598	6,701	6,432	2,209	2,130
NE	7,775	8,875	7,925	9,025	2,182	2,210
NY	3,408	3,530	3,725	3,842	2,362	2,369
NC	6,366	5,911	13,808	13,496	1,897	1,919
OH	21,156	21,325	21,503	21,696	2,297	2,263
OK	1,925	1,950	3,560	3,700	1,826	2,054
OR	2,459	2,505	2,639	2,676	2,198	2,280
PA	19,255	19,095	20,571	20,440	2,270	2,226
SC	3,872	3,694	4,886	4,706	2,251	2,231
SD	1,738	1,593	2,018	1,838	2,136	2,399
TX	12,236	12,596	15,550	15,925	2,090	2,072
VA	1,590	1,745	3,845	3,855	2,107	1,997
WA	4,664	5,148	4,904	5,384	2,325	2,303
WI	2,995	2,868	3,518	3,395	2,160	2,239
30 Sts	218,087	216,005	272,058	269,775	2,150	2,150
Oth Sts 3/	11,385	10,961	15,932	15,698	2,228	2,109
US	229,472	226,966	287,990	285,473	2,155	2,148

1/ 1995 preliminary.

2/ Includes all layers and eggs produced in both table egg and hatching egg flocks regardless of size.

3/ Estimates for individual States are not available.

Egg Production: By Type, State, and United States,
June 1994-95 1/

State	Total Production		Table Eggs 2/		Hatching Eggs 2/	
	1994	1995	1994	1995	1994	1995
	Million Eggs					
AL	223	222	109	101	114	121
AR	323	297	150	114	173	183
CA	536	506				
CO	64	63				
CT	78	76				
FL	203	189	186	177	17	12
GA	346	332	203	188	143	144
HI	16	15	16	15	0	0
IL	63	59	62	58	1	1
IN	441	447	431	438	10	9
IA	310	331				
ME	117	111				
MD	68	83	60	75	8	8
MI	113	113				
MN	213	231	204	221	9	10
MS	124	118	55	49	69	69
MO	140	140				
NE	164	191	164	191	0	0
NY	83	86				
NC	259	257	140	132	119	125
OH	472	483				
OK	65	74	42	47	23	27
OR	58	64	56	62	2	2
PA	451	453	435	437	16	16
SC	109	106	91	88	18	18
SD	41	41	41	41	0	0
TX	309	314	265	264	44	50
VA	76	76	37	37	39	39
WA	111	123				
WI	72	71				
30 Sts	5,648	5,672	4,799	4,787	849	885
0th Sts 3/	344	325	286	260	58	65
US	5,992	5,997	5,085	5,047	907	950

1/ 1995 revised.

2/ Data by type of flock not shown for some States to avoid disclosing individual operations.

3/ Estimates for individual States are not available.

Egg Production: By Type, State, and United States,
July 1994-95 1/

State	Total Production		Table Eggs 2/		Hatching Eggs 2/	
	1994	1995	1994	1995	1994	1995
	Million Eggs					
AL	234	231	115	108	119	123
AR	322	308	146	118	176	190
CA	546	517				
CO	66	66				
CT	83	79				
FL	216	195	200	184	16	11
GA	361	341	211	194	150	147
HI	17	16	17	16	0	0
IL	62	66	61	64	1	2
IN	452	448	442	439	10	9
IA	319	342				
ME	120	113				
MD	73	86	65	78	8	8
MI	120	117				
MN	228	232	219	222	9	10
MS	127	119	55	52	72	67
MO	148	137				
NE	173	199	173	199	0	0
NY	88	91				
NC	262	259	141	130	121	129
OH	494	491				
OK	65	76	41	48	24	28
OR	58	61	56	60	2	1
PA	467	455	451	439	16	16
SC	110	105	91	86	19	19
SD	43	44	43	44	0	0
TX	325	330	279	279	46	51
VA	81	77	40	39	41	38
WA	114	124				
WI	76	76				
30 Sts	5,850	5,801	4,975	4,900	875	901
Oth Sts 3/	355	331	294	266	61	65
US	6,205	6,132	5,269	5,166	936	966

1/ 1995 preliminary.

2/ Data by type of flock not shown for some States to avoid disclosing individual operations.

3/ Estimates for individual States are not available.

Forced Molt: Percent of All Layers by Month,
United States, 1994-95 1/

Month	Percent Being Molted		Percent with Molt Completed	
	1994	1995	1994	1995
	Percent			
Jan	4.5	4.6	22.4	23.8
Feb	5.4	6.4	21.4	23.6
Mar	3.7	4.8	21.1	24.0
Apr	2.7	3.4	21.0	23.7
May	5.6	5.8	20.2	22.3
Jun	5.6	6.0	21.4	22.9
Jul	5.0	4.9	22.4	23.1
Aug	4.5	4.1	23.0	23.2
Sep				
Oct				
Nov				
Dec				

1/ As of first of month.

Forced Molt: Percent of All Layers by State
and United States, 1994-95 1/

State	August			
	Percent Being Molted		Percent with Molt Completed	
	1994	1995	1994	1995
Percent				
AL	5.0	3.0	13.0	15.0
AR	3.5	2.0	11.0	12.5
CA	10.0	9.0	48.0	41.5
CO	9.0	5.0	23.0	20.5
CT	0.0	4.0	17.5	14.0
FL	6.0	7.0	36.0	39.0
GA	4.0	3.0	21.5	19.0
HI	7.0	9.0	53.5	51.5
IL	10.0	1.0	20.5	40.5
IN	2.0	1.0	35.5	29.5
IA	7.0	5.0	25.0	33.0
ME	0.0	0.5	0.5	1.5
MD	2.0	2.0	32.5	33.0
MI	1.0	4.0	14.5	21.0
MN	2.5	10.0	27.0	25.5
MS	3.5	2.5	13.5	17.5
MO	2.5	0.0	27.0	24.5
NE	5.0	3.0	15.0	22.0
NY	0.5	0.0	7.5	5.0
NC	3.5	4.0	15.5	13.0
OH	3.0	4.5	10.5	13.5
OK	6.5	1.5	11.5	12.0
OR	11.5	10.5	22.5	37.0
PA	2.5	4.0	15.5	20.0
SC	8.5	7.0	24.0	31.5
SD	7.5	0.5	50.0	15.5
TX	5.0	3.5	24.0	22.0
VA	3.5	1.5	11.5	14.0
WA	7.5	6.0	39.0	39.0
WI	9.0	0.0	24.5	32.5
30 Sts	4.6	4.1	23.0	23.3
Oth Sts 2/	2.0	4.2	22.9	21.7
US	4.5	4.1	23.0	23.2

1/ As of first of month.

2/ Estimates for individual States are not available.

Hatchery Production: Eggs in Incubators, Chicks Hatched,
and Placements by Type, United States, July-August 1994-95

Item	1994	1995	1995 as % of 1994
	1,000		Percent
Egg-Type			
Eggs in Incubators on Aug 1	27,199	26,566	98
Chicks Hatched During Jul	29,613	28,682	97
Chicks Hatched Jan thru Jul	230,393	230,536	100
Pullets Hatched During Jul for Intended:			
Placements in Hatchery Supply Flocks	264	235	89
7-18 Months Earlier 1/	2,782	3,013	108
Broiler-Type			
Eggs in Incubators on Aug 1	534,393	558,473	105
Chicks Hatched During Jul	646,456	672,822	104
Chicks Hatched Jan thru Jul	4,396,029	4,631,919	105
Pullets Hatched During Jul for Intended:			
Placements in Hatchery Supply Flocks	6,104	6,302	103
7-14 Months Earlier 2/	44,884	49,255	110

1/ 1995 includes pullet chicks hatched Jan 1994 through Dec 1994.

2/ 1995 includes pullet chicks hatched May 1994 through Dec 1994.

Egg-Type Eggs in Incubators: By Region and United States,
August 1, 1994-95

Geographic Division	1994	1995	1995 as % of 1994
	1,000		Percent
North Atlantic	4,718	3,845	81
E North Central	7,018	6,679	95
W North Central	4,802	5,002	104
South Atlantic	3,874	4,653	120
South Central	3,500	2,654	76
West	3,287	3,733	114
US	27,199	26,566	98

Regional Listing:

North Atlantic = CT, ME, MA, NH, NJ, NY, PA, RI, VT.

E North Central = IL, IN, MI, OH, WI.

W North Central = IA, KS, MN, MO, NE, ND, SD.

South Atlantic = DE, FL, GA, MD, NC, SC, VA, WV.

South Central = AL, AR, KY, LA, MS, OK, TN, TX.

West = AK, AZ, CA, CO, HI, ID, MT, NM, NV, OR, UT, WA, WY.

Egg-Type Chicks Hatched: By State and United States,
July 1994-95

State	July			Jan-Jul		
	1994	1995	1995 as % of 1994	1994	1995	1995 as % of 1994
	1,000		Percent	1,000		Percent
AR	856	1,214	142	7,666	7,491	98
FL	1,009	1,062	105	7,537	7,239	96
GA	1,655	1,273	77	12,108	12,470	103
IN	6,297	6,315	100	45,306	48,912	108
IA	3,192	2,511	79	17,737	17,128	97
KS	217	395	182	1,889	1,828	97
MN	1,503	2,222	148	13,870	15,188	110
MO	491	481	98	3,819	3,387	89
PA	3,789	3,359	89	31,018	24,218	78
Oth Sts 1/	10,604	9,850	93	89,443	92,675	104
US	29,613	28,682	97	230,393	230,536	100

1/ Not published separately to avoid disclosing data for individual operations.

Egg-Type Chicks Hatched: By Month, United States, 1993-95

Month	By Months				Cumulative			
	1993	1994	1995	1995 as % of 1994	1993	1994	1995	1995 as % of 1994
	1,000		Percent		1,000		Percent	
Jan	34,855	33,212	31,527	95	34,855	33,212	31,527	95
Feb	34,009	31,086	31,693	102	68,864	64,298	63,220	98
Mar	38,264	33,492	34,806	104	107,128	97,790	98,026	100
Apr	37,163	35,668	34,101	96	144,291	133,458	132,127	99
May	36,742	35,336	36,335	103	181,033	168,794	168,462	100
Jun	35,587	31,986	33,392	104	216,620	200,780	201,854	101
Jul	33,980	29,613	28,682	97	250,600	230,393	230,536	100
Aug	31,455	31,295			282,055	261,688		
Sep	31,775	30,873			313,830	292,561		
Oct	31,634	31,766			345,464	324,327		
Nov	30,074	25,475			375,538	349,802		
Dec	30,448	29,072			405,986	378,874		

Intended Placements: Egg-Type Pullet Chicks for Hatchery Supply
Flocks by Month and Total, United States, 1993-95 1/

Month	Pullet Chicks Hatched			1995 as % of 1994	Cumulative Potential Placements Relative to Current Supply Flocks 7-18 Months Earlier 2/		
	1993	1994	1995		1994	1995	1996
	1,000			Percent	1,000		
Jan	193	197	236	120	2,806	2,916	3,093
Feb	119	186	251	135	2,812	2,937	3,064
Mar	268	259	356	137	2,754	3,027	
Apr	251	277	317	114	2,787	3,072	
May	275	334	193	58	2,801	3,091	
Jun	267	254	234	92	2,690	3,156	
Jul	243	264	235	89	2,782	3,013	
Aug	219	309			2,786	3,052	
Sep	270	315			2,853	3,117	
Oct	251	270			2,844	3,214	
Nov	158	223			2,870	3,254	
Dec	268	125			2,929	3,113	
Total	2,782	3,013					

1/ Reported by leading breeders. Coverage may not be 100 percent. Includes expected pullet chicks from eggs sold during the preceding month at the rate of 125 pullet chicks per 30 dozen case of eggs.

2/ For July 1995, includes breeder pullet chicks hatched Jan 1994 through Dec 1994.

Broiler-Type Eggs in Incubators: By Region
and United States, August 1, 1994-95

Geographic Division	1994	1995	1995 as % of 1994
	1,000		Percent
North Atlantic	12,120	11,853	98
E North Central	6,447	8,309	129
W North Central	14,123	17,185	122
South Atlantic	213,541	222,046	104
South Central	266,733	277,691	104
West	21,429	21,389	100
US	534,393	558,473	105

Broiler-Type Chicks Hatched: Number by State
and United States, July 1994-95

State	July			Jan-Jul		
	1994	1995	1995 as % of 1994	1994	1995	1995 as % of 1994
	1,000		Percent	1,000		Percent
AL	90,866	92,610	102	621,763	643,411	103
AR	103,844	104,296	100	722,072	719,709	100
DE	16,430	17,438	106	109,217	117,492	108
FL	11,918	10,810	91	84,607	70,907	84
GA	93,168	98,396	106	623,275	672,146	108
MD	31,912	31,355	98	222,129	219,834	99
MS	53,208	55,043	103	355,201	378,734	107
NC	61,200	64,185	105	411,475	438,808	107
PA	11,321	12,029	106	80,456	79,057	98
SC	15,149	15,794	104	104,566	107,785	103
TX	37,370	39,364	105	250,663	272,063	109
VA	23,993	24,231	101	156,708	166,306	106
CA TN & WV	33,382	36,093	108	229,088	239,732	105
15 Sts 1/	583,761	601,644	103	3,971,220	4,125,984	104
OR & WA	6,301	5,845	93	41,912	40,003	95
Oth Sts 2/	56,394	65,333	116	382,897	465,932	122
US	646,456	672,822	104	4,396,029	4,631,919	105

1/ States in the weekly hatchery production estimating program.

2/ Not published separately to avoid disclosing data for individual operations.

Broiler Chicks Hatched: By Month, United States, 1993-95

Month	By Months				Cumulative			
	1993	1994	1995	1995 as % of 1994	1993	1994	1995	1995 as % of 1994
	1,000			Percent	1,000			Percent
Jan	598,798	618,112	661,389	107	598,798	618,112	661,389	107
Feb	547,831	558,590	598,962	107	1,146,629	1,176,702	1,260,351	107
Mar	622,983	639,967	677,334	106	1,769,612	1,816,669	1,937,685	107
Apr	600,861	627,051	662,372	106	2,370,473	2,443,720	2,600,057	106
May	634,371	658,690	689,650	105	3,004,844	3,102,410	3,289,707	106
Jun	619,453	647,163	669,390	103	3,624,297	3,749,573	3,959,097	106
Jul	619,009	646,456	672,822	104	4,243,306	4,396,029	4,631,919	105
Aug	612,381	653,710			4,855,687	5,049,739		
Sep	582,781	625,867			5,438,468	5,675,606		
Oct	584,260	617,957			6,022,728	6,293,563		
Nov	574,803	597,276			6,597,531	6,890,839		
Dec	623,237	658,914			7,220,768	7,549,753		

Intended Placements: Broiler-Type Pullet Chicks for Hatchery
Supply Flocks by Month and Total, 1993-95 1/

Month	Pullet Chicks Hatched			as % of: 1994	Cumulative Potential Placements Relative to Current Supply Flocks 7-14 Months Earlier 2/		
	1993	1994	1995		1994	1995	1996
	----- 1,000 -----			Percent	----- 1,000 -----		
US Place- ments							
Jan	5,664	5,989	5,748	96	42,665	47,272	48,255
Feb	4,549	5,518	5,481	99	43,906	47,859	48,738
Mar	5,678	6,301	6,161	98	44,486	48,254	
Apr	5,531	6,101	6,319	104	43,943	48,601	
May	5,944	6,266	6,135	98	44,907	49,425	
Jun	5,568	5,911	6,178	105	44,746	48,943	
Jul	5,967	6,104	6,302	103	44,884	49,255	
Aug	5,585	6,064			44,929	48,737	
Sep	5,121	6,336			44,879	48,307	
Oct	5,513	6,342			45,213	48,364	
Nov	5,517	5,819			45,729	48,620	
Dec	5,669	6,413			46,874	48,419	
Annual Total	66,306	73,164					
Total Place- ments ^{3/}							
Jan	7,098	7,168	7,038	98			
Feb	5,664	6,829	7,176	105			
Mar	6,909	7,544	7,577	100			
Apr	6,420	7,234	7,835	108			
May	7,182	7,394	7,873	106			
Jun	6,723	7,153	7,485	105			
Jul	7,114	7,146	7,730	108			
Aug	6,587	7,290					
Sep	6,177	7,545					
Oct	6,634	7,959					
Nov	6,718	7,251					
Dec	6,949	7,908					
Annual Total	80,175	88,421					

1/ Reported by leading breeders. Coverage may not be 100 percent. Includes expected pullet chicks from eggs sold during the preceding month at the rate of 125 pullet chicks per 30 dozen case of eggs.

2/ For Jul 1995, includes breeder pullet chicks hatched May 1994 through Dec 1994.

3/ U.S. production of intended placements worldwide.

Procedures and Reliability

Data Sources: Primary data for the "Chickens and Eggs" report are from weekly and/or monthly questionnaires sent to producers. An attempt is made to collect information for layer and egg estimates from each known contractor and independent producer who has over 30,000 table egg layers. Coverage for operations with less than 30,000 table egg layers are estimated each month based on data reported in December. Approximately 900 contractors, independent egg producers, and started pullet operations are contacted each month. All known hatcheries, approximately 360, are contacted for information on a weekly and/or monthly basis.

Revisions: The previous month's estimates are subject to revision if late reports or corrected data indicates a different level. Additionally, revisions needed after the monthly report will be made at the end of the marketing year and published in the annual summaries of "Layers and Egg Production" and "Hatchery Production".

Procedures and Reliability: Operations are mailed a questionnaire and given adequate time to respond by mail. Those that do not respond are phoned. Great care is exercised to ensure that all operations are accounted for during each survey period. However, there are usually missing reports that must be accounted for in the estimates.

Sound statistical methodology is employed to derive estimates from the reported data. All data are checked for unusual values. All operations' data are compared to their own past operating profiles and also to trends from other operations. Data for missing operations are estimated based on similar operations or historical data. Survey data are subject to non-sampling errors such as omissions and mistakes in reporting and in processing. While these errors cannot be measured directly, they are minimized by reviewing all data for consistency and reasonableness.

Egg-type chicks hatched are comprised of all chicks of egg-type domesticated breeds including males and chicks destined for hatchery supply flocks and research purposes. The relationship of chicks hatched to chicken inventory and poultry marketings is carefully monitored. The disposition of egg-type chicks hatched prior to placement into the laying flock can vary significantly, which can make comparisons to changes in layer inventory inconsistent over time.

Intended placement data reported by leading breeders include pullet chicks expected from eggs sold the preceding month. The breeders in this report account for a large percentage of replacement pullets for hatchery supply flocks. Production of replacement pullets by these breeders indicates the number of pullets available to hatchery egg supply flocks several months before the pullets will actually move into the flocks.

The next "Chickens and Eggs" report will be released at 3 p.m. ET on September 21, 1995.

The United States Department of Agriculture (USDA) prohibits discrimination in its programs on the basis of race, color, national origin, sex, religion, age, disability, political beliefs, and marital or familial status. Persons with disabilities who require alternative means for communication of program information (braille, large print, audiotape, etc.) should contact the USDA Office of Communications at (202) 720-5881 (voice) or (202) 720-7808 (TDD).

To file a complaint, write the Secretary of Agriculture, USDA, Washington, D.C., 20250, or call (202) 720-7327 (voice) or (202) 720-1127 (TDD). USDA is an equal employment opportunity employer.

SUBSCRIBE TODAY!!

For your convenience, there are several ways to obtain NASS reports, data products, and services:

INTERNET ACCESS

All NASS reports are now available free of charge on the worldwide Internet. For access, connect to the Internet and select:

1. **Worldwide Web:**
<http://www.usda.gov/nass/> **OR**
2. **For Gopher/Telenet/FTP access:**
HOST=usda.mannlib.cornell.edu **OR**
3. **For a subscription direct to your e-mail address, send an e-mail message to:**
usda-reports@usda.mannlib.cornell.edu and in the body of the message type the word: lists

PRINTED REPORTS OR DATA PRODUCTS

CALL OUR TOLL-FREE ORDER DESK: 1-800-999-6779 (U.S. and Canada)

Other areas, please call 1-703-834-0125 FAX: 1-703-834-0110

(Visa, MasterCard, check, or money order acceptable for payment.)

ASSISTANCE

For **assistance** with general agricultural statistics or further information about NASS or its products or services, contact the **NASS INFORMATION HOTLINE 1-800-727-9540**, 7:30 a.m. to 4:30 p.m., or e-mail: **NASS@AG.GOV**.
