

# Chickens and Eggs



United States  
Department of  
Agriculture

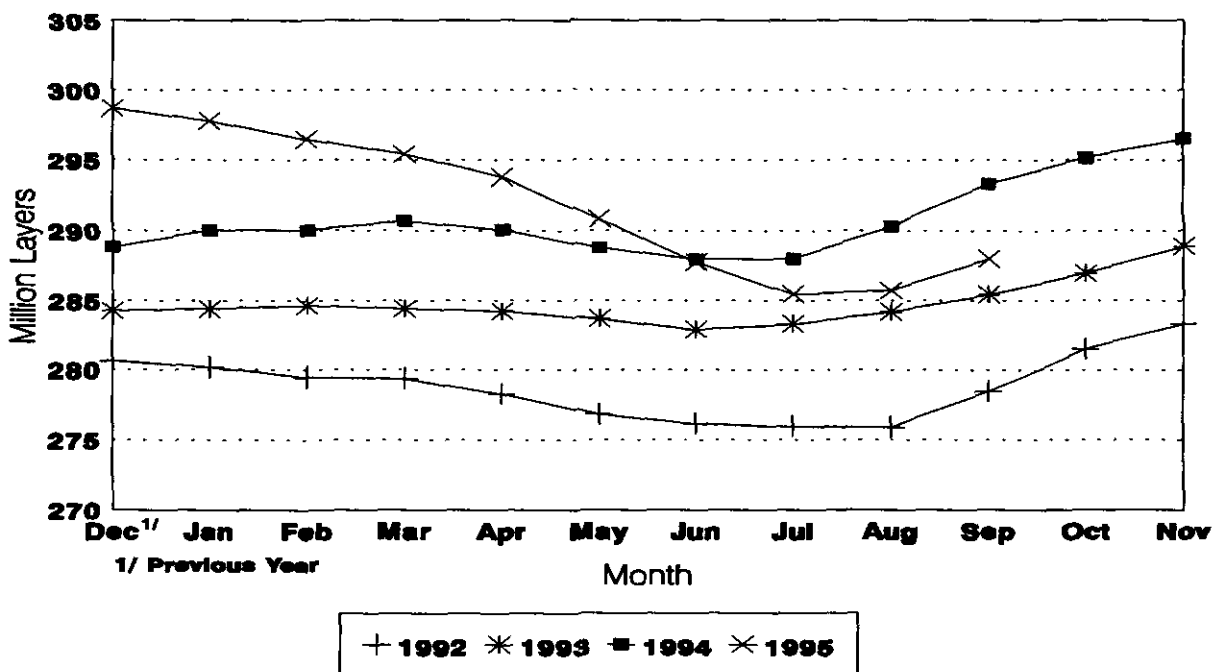
Washington, D.C.

Released October 24, 1995, by the National Agricultural Statistics Service (NASS), Agricultural Statistics Board, U.S. Department of Agriculture. For information on "Chickens and Eggs" call Dan Boostrom at (202) 720-3244 or Tom Kruchten at (202) 690-4870, office hours 8:00 a.m. to 4:30 p.m. ET. For assistance with general agricultural statistics, information about NASS, its products or services, contact the NASS Information Hotline at 1-800-727-9540 or E-mail: NASS@AG.GOV. Estimates refer to August, September, and October 1995.

## September Egg Production Down 2 Percent

U.S. egg production totaled 5.98 billion during September 1995, down 2 percent from the 6.13 billion produced September 1994. Production included 5.05 billion table eggs and 927 million hatching egg type, of which 867 million were broiler-type and 60.0 million were egg-type. The total number of layers during September 1995 averaged 288 million, down 2 percent from the average number of layers during September 1994. September egg production per 100 layers was 2,075 eggs, compared with 2,088 in September 1994.

## Average Number of Layers United States, 1992 - 95



All layers in the U.S. on October 1, 1995, totaled 289 million, down 2 percent from a year ago. The 289 million layers consisted of 237 million layers producing table or commercial type eggs, 49.3 million layers producing broiler-type hatching eggs, and 2.73 million layers producing egg-type hatching eggs. Rate of lay per day on October 1, 1995, averaged 69.1 eggs per 100 layers, down slightly from the 69.2 eggs a year ago.

Laying flocks in the 30 major egg production States produced 5.66 billion eggs during September, down 2 percent from September 1994. The average number of layers during September, at 272 million, was also down 2 percent from the year earlier.

Individual State estimates are available for the 30 major egg producing States. These States are listed on page 8 of this release and account for approximately 95 percent of the total U.S. egg production. Production for the other States are grouped into an "Other States" category and combined with the 30 States published individually to obtain a U.S. estimate. Individual State estimates for "Other States" are available annually in the "**Layers and Egg Production**" report.

#### **Egg-Type Chicks Hatched Up 4 Percent**

Egg-type chicks **hatched** during September totaled 32.1 million, up 4 percent from September 1994. **Eggs in incubators** totaled 29.6 million on October 1, 1995, up 4 percent from a year ago.

Domestic placements of **egg-type pullet chicks for future hatchery supply flocks** by leading breeders totaled 292,000 during September 1995, down 7 percent from the 315,000 of September 1994.

#### **Broiler Hatch Up 1 Percent**

The September 1995 **hatch** of broiler-type chicks, at 634 million, was 1 percent above September of the previous year. There were 538 million **eggs in incubators** on October 1, 1995, up 7 percent from a year earlier.

Leading breeders placed 6.29 million **broiler-type pullet chicks for future domestic hatchery supply flocks** during September 1995, down 1 percent from September 1994.

**For information call Tom Kruchten at (202) 690-4870**

Layers: Average Number During the Month,  
United States, 1992-1995 1/

Month	1992	1993	1994	1995
1,000 Layers				
Dec 2/	280,572	284,267	288,832	298,709
Jan	280,171	284,398	290,041	297,805
Feb	279,450	284,638	290,047	296,477
Mar	279,373	284,405	290,719	295,422
Apr	278,284	284,234	290,073	293,824
May	276,790	283,694	288,784	290,837
Jun	276,142	282,914	287,974	287,744
Jul	275,953	283,324	287,990	285,470
Aug	275,891	284,192	290,321	285,717
Sep	278,461	285,418	293,381	287,989
Oct	281,573	286,948	295,172	
Nov	283,305	288,875	296,547	

1/ Data are for chart on cover page.

2/ December preceding year.

Eggs: Production During the Month by Type,  
United States, 1994-95

Month	Total Eggs		Table Eggs		Hatching Eggs	
	1994	1995	1994	1995	1994	1995
Million Eggs						
Dec 1/	6,264	6,519	5,388	5,568	876	951
Jan	6,186	6,374	5,293	5,418	893	956
Feb	5,598	5,720	4,775	4,856	823	864
Mar	6,320	6,448	5,404	5,490	916	958
Apr	6,073	6,173	5,177	5,234	896	939
May	6,189	6,244	5,249	5,264	940	980
Jun	5,992	5,997	5,085	5,047	907	950
Jul	6,205	6,132	5,269	5,166	936	966
Aug	6,272	6,130	5,336	5,175	936	955
Sep	6,125	5,976	5,218	5,049	907	927
Oct	6,377		5,446		931	
Nov	6,265		5,358		907	
During Year:	73,866	61,713	62,998	52,267	10,868	9,446

1/ December preceding year.

Eggs and Layers: Layers on Hand and Eggs Produced by Type,  
and Forced Molt, United States, August-September 1994-95

Item	1994	1995 1/	1995 as % of 1994
<b>Layers During Aug (1,000)</b>			
All Layers	290,321	285,717	98
Table Egg Type	239,258	234,179	98
Hatching Egg Type	51,063	51,538	101
Broiler-Type Hatching	48,404	48,819	101
Egg-Type Hatching	2,659	2,719	102
<b>Eggs per 100 Layers During Aug (Number)</b>			
All Layers	2,160	2,145	99
Table Egg Type	2,230	2,210	99
Hatching Egg Type	1,833	1,853	101
Broiler-Type Hatching	1,810	1,825	101
Egg-Type Hatching	2,256	2,354	104
<b>Eggs Produced During Aug (Million)</b>			
All Layers	6,272	6,130	98
Table Egg Type	5,336	5,175	97
Hatching Egg Type	936	955	102
Broiler-Type Hatching	876	891	102
Egg-Type Hatching	60	64	107
<b>Layers on Sep 1 (1,000)</b>			
All Layers	292,116	287,343	98
Table Egg Type	241,187	235,473	98
Hatching Egg Type	50,929	51,870	102
Broiler-Type Hatching	48,267	49,155	102
Egg-Type Hatching	2,662	2,715	102
<b>Eggs per 100 Layers on Sep 1 (Number)</b>			
All Layers	69.8	69.2	99
Table Egg Type	72.0	71.4	99
Hatching Egg Type	59.5	59.6	100
Broiler-Type Hatching	58.6	58.6	100
Egg-Type Hatching	74.9	76.1	102
<b>Forced Molt Layers, Sep 1</b>			
Percent Being Molted	4.7	4.7	100
Percent with Molt Completed	22.8	23.1	101

1/ Revised.

Eggs and Layers: Layers on Hand and Eggs Produced by Type,  
and Forced Molt, United States, September-October 1994-95

Item	1994	1995 1/	1995 as % of 1994
Layers During Sep (1,000)			
All Layers	293,381	287,989	98
Table Egg Type	242,497	236,017	97
Hatching Egg Type	50,884	51,972	102
Broiler-Type Hatching	48,157	49,245	102
Egg-Type Hatching	2,727	2,727	100
Eggs per 100 Layers During Sep (Number)			
All Layers	2,088	2,075	99
Table Egg Type	2,152	2,139	99
Hatching Egg Type	1,782	1,784	100
Broiler-Type Hatching	1,763	1,761	100
Egg-Type Hatching	2,127	2,200	103
Eggs Produced During Sep (Million)			
All Layers	6,125	5,976	98
Table Egg Type	5,218	5,049	97
Hatching Egg Type	907	927	102
Broiler-Type Hatching	849	867	102
Egg-Type Hatching	58	60	103
Layers on Oct 1 (1,000)			
All Layers	294,576	288,587	98
Table Egg Type	243,761	236,537	97
Hatching Egg Type	50,815	52,050	102
Broiler-Type Hatching	48,033	49,319	103
Egg-Type Hatching	2,782	2,731	98
Eggs per 100 Layers on Oct 1 (Number)			
All Layers	69.2	69.1	100
Table Egg Type	71.3	71.2	100
Hatching Egg Type	59.6	59.7	100
Broiler-Type Hatching	58.8	58.8	100
Egg-Type Hatching	73.1	76.0	104
Forced Molt Layers, Oct 1			
Percent Being Molted	5.1	5.1	100
Percent with Molt Completed	23.4	23.2	99

1/ Preliminary.

Eggs and Layers: Layers on Hand and Eggs Produced by Type, and Forced Molt, August-September, 30 Selected States, 1994-95 1/

Item	1994	1995 2/	1995 as % of 1994
Layers During Aug (1,000)			
All Layers	274,338	269,828	98
Table Egg Type	226,399	221,785	98
Hatching Egg Type	47,939	48,043	100
Broiler-Type Hatching	45,381	45,418	100
Egg-Type Hatching	2,558	2,625	103
Eggs per 100 Layers During Aug (Number)			
All Layers	2,155	2,150	100
Table Egg Type	2,224	2,215	100
Hatching Egg Type	1,827	1,848	101
Broiler-Type Hatching	1,803	1,821	101
Egg-Type Hatching	2,267	2,324	103
Eggs Produced During Aug (Million)			
All Layers	5,912	5,801	98
Table Egg Type	5,036	4,913	98
Hatching Egg Type	876	888	101
Broiler-Type Hatching	818	827	101
Egg-Type Hatching	58	61	105
Layers on Sep 1 (1,000)			
All Layers	276,158	271,316	98
Table Egg Type	228,335	223,013	98
Hatching Egg Type	47,823	48,303	101
Broiler-Type Hatching	45,257	45,695	101
Egg-Type Hatching	2,566	2,608	102
Eggs per 100 Layers on Sep 1 (Number)			
All Layers	69.6	69.5	100
Table Egg Type	71.8	71.6	100
Hatching Egg Type	59.3	59.6	101
Broiler-Type Hatching	58.4	58.7	101
Egg-Type Hatching	74.9	75.8	101
Forced Molt Layers, Sep 1			
Percent Being Molted	4.7	4.6	98
Percent with Molt Completed	22.9	23.2	101
Pullets Less Than 20 Weeks of Age, Sep 1 (1,000)	74,913	68,351	91
Pullets Added During Aug (1,000)	22,002	21,116	96
Layers Sold During Aug (1,000)	15,101	13,719	91
Layers Died, Destroyed, or Disappeared For Any Reason During Aug (1,000)	2,469	3,436	139

1/ The 30 States are listed in the table on page 8.

2/ Revised.

Eggs and Layers: Layers on Hand and Eggs Produced by Type, and Forced Molt, September-October, 30 Selected States, 1994-95 1/

Item	1994	1995 2/	1995 as % of 1994
Layers During Sep (1,000)			
All Layers	277,360	272,064	98
Table Egg Type	229,605	223,557	97
Hatching Egg Type	47,755	48,507	102
Broiler-Type Hatching	45,135	45,879	102
Egg-Type Hatching	2,620	2,628	100
Eggs per 100 Layers During Sep (Number)			
All Layers	2,084	2,080	100
Table Egg Type	2,147	2,145	100
Hatching Egg Type	1,778	1,779	100
Broiler-Type Hatching	1,755	1,757	100
Egg-Type Hatching	2,176	2,169	100
Eggs Produced During Sep (Million)			
All Layers	5,779	5,658	98
Table Egg Type	4,930	4,795	97
Hatching Egg Type	849	863	102
Broiler-Type Hatching	792	806	102
Egg-Type Hatching	57	57	100
Layers on Oct 1 (1,000)			
All Layers	278,510	272,776	98
Table Egg Type	230,839	224,084	97
Hatching Egg Type	47,671	48,692	102
Broiler-Type Hatching	45,005	46,052	102
Egg-Type Hatching	2,666	2,640	99
Eggs per 100 Layers on Oct 1 (Number)			
All Layers	69.2	69.2	100
Table Egg Type	71.2	71.3	100
Hatching Egg Type	59.4	59.5	100
Broiler-Type Hatching	58.6	58.6	100
Egg-Type Hatching	73.5	75.9	103
Forced Molt Layers, Oct 1			
Percent Being Molted	5.1	5.1	100
Percent with Molt Completed	23.4	23.4	100
Pullets Less Than 20 Weeks of Age, Oct 1 (1,000)	73,056	68,890	94
Pullets Added During Sep (1,000)	21,279	19,150	90
Layers Sold During Sep (1,000)	14,759	14,146	96
Layers Died, Destroyed, or Disappeared For Any Reason During Sep (1,000)	2,607	2,650	102

1/ The 30 States are listed in the table on page 8.

2/ Preliminary.

Layers and Eggs: Layers on Hand and Eggs Produced by State  
and United States, During August 1994-95 1/

State	Table Egg Layers in Flocks 30,000 and Above		All Layers 2/		Eggs per 100 for All Layers 2/	
	1994	1995	1994	1995	1994	1995
	1,000				Number	
AL	5,040	4,756	11,581	11,572	2,012	1,962
AR	6,741	5,810	16,661	15,744	1,915	1,918
CA	24,875	23,365	25,477	23,900	2,178	2,184
CO	2,654	2,431	3,213	2,964	2,116	2,294
CT	3,457	3,496	3,648	3,661	2,275	2,185
FL	8,875	8,332	9,566	8,965	2,227	2,209
GA	10,282	9,279	18,398	16,942	1,995	2,036
HI	746	734	828	784	2,040	1,956
IL	2,610	2,657	2,769	2,860	2,239	2,273
IN	20,020	19,402	20,886	20,222	2,207	2,210
IA	14,250	14,045	15,055	14,931	2,152	2,224
ME	4,865	4,758	5,035	4,895	2,383	2,329
MD	2,745	3,316	3,242	3,794	2,283	2,372
MI	5,024	4,885	5,325	5,158	2,368	2,241
MN	9,450	9,900	10,316	10,738	2,220	2,142
MS	2,356	2,299	6,286	6,033	2,020	1,939
MO	5,983	5,608	6,683	6,470	2,170	2,087
NE	7,850	8,700	8,000	8,850	2,182	2,257
NY	3,399	3,681	3,716	3,995	2,395	2,353
NC	6,461	6,130	14,076	13,783	1,932	1,886
OH	21,421	21,479	21,766	21,859	2,283	2,278
OK	1,950	1,960	3,620	3,755	1,768	2,024
OR	2,454	2,403	2,641	2,589	2,234	2,356
PA	19,395	18,865	20,700	20,171	2,280	2,206
SC	3,910	3,670	4,940	4,715	2,247	2,206
SD	1,713	1,588	1,990	1,833	2,148	2,430
TX	12,228	12,918	15,500	16,301	2,123	2,092
VA	1,596	1,698	3,798	3,741	2,185	2,085
WA	4,890	5,000	5,126	5,239	2,302	2,310
WI	2,958	2,842	3,496	3,364	2,203	2,259
30 Sts	220,198	216,007	274,338	269,828	2,155	2,150
Oth Sts 3/	11,398	11,094	15,983	15,889	2,252	2,071
US	231,596	227,101	290,321	285,717	2,160	2,145

1/ 1995 revised.

2/ Includes all layers and eggs produced in both table egg and hatching egg flocks regardless of size.

3/ Estimates for individual States are not available.



Layers and Eggs: Layers on Hand and Eggs Produced by State  
and United States, During September 1994-95 1/

State	Table Egg Layers in Flocks 30,000 and Above				Eggs per 100 for All Layers 2/	
	1994	1995	1994	1995	1994	1995
	1,000				Number	
AL	4,982	4,600	11,457	11,533	1,955	1,882
AR	6,825	5,716	16,706	15,738	1,886	1,849
CA	25,153	24,083	25,757	24,638	2,069	2,102
CO	2,641	2,563	3,206	3,099	1,996	2,130
CT	3,494	3,453	3,690	3,623	2,195	2,181
FL	8,793	8,388	9,460	9,043	2,125	2,123
GA	10,748	9,547	18,826	17,203	1,923	1,976
HI	740	720	822	770	1,983	1,914
IL	2,716	2,607	2,875	2,805	2,157	2,103
IN	20,419	19,446	21,299	20,266	2,113	2,151
IA	14,333	14,397	15,126	15,280	2,155	2,120
ME	4,921	4,741	5,081	4,882	2,322	2,315
MD	2,679	3,315	3,139	3,744	2,230	2,324
MI	5,217	4,905	5,525	5,177	2,202	2,091
MN	9,525	10,073	10,401	10,908	2,106	2,072
MS	2,469	2,253	6,476	6,111	1,961	1,865
MO	6,125	5,780	6,873	6,709	2,110	2,027
NE	8,250	8,625	8,400	8,775	2,094	2,154
NY	3,431	3,636	3,770	3,960	2,334	2,247
NC	6,596	6,143	14,133	13,848	1,903	1,863
OH	21,424	21,697	21,778	22,081	2,218	2,228
OK	1,935	1,995	3,635	3,765	1,843	1,939
OR	2,434	2,413	2,634	2,619	2,316	2,138
PA	19,725	19,005	21,060	20,290	2,179	2,154
SC	4,000	3,713	5,043	4,748	2,181	2,148
SD	1,698	1,560	1,973	1,803	2,043	2,295
TX	12,338	13,035	15,500	16,451	2,039	2,049
VA	1,668	1,622	3,828	3,686	2,064	2,062
WA	5,168	4,994	5,413	5,238	2,235	2,253
WI	2,943	2,746	3,474	3,271	2,159	2,109
30 Sts	223,390	217,771	277,360	272,064	2,084	2,080
Oth Sts 3/	11,440	11,160	16,021	15,925	2,153	1,997
US	234,830	228,931	293,381	287,989	2,088	2,075

1/ 1995 preliminary.

2/ Includes all layers and eggs produced in both table egg and hatching egg flocks regardless of size.

3/ Estimates for individual States are not available.

Egg Production: By Type, State, and United States.  
August 1994-95 1/

State	Total Production		Table Eggs 2/		Hatching Eggs 2/	
	1994	1995	1994	1995	1994	1995
	Million Eggs					
AL	233	227	115	104	118	123
AR	319	302	143	122	176	180
CA	555	522				
CO	68	68				
CT	83	80				
FL	213	198	199	187	14	11
GA	367	345	218	198	149	147
HI	17	15	17	15	0	0
IL	62	65	61	64	1	1
IN	461	447	451	438	10	9
IA	324	332				
ME	120	114				
MD	74	90	67	82	7	8
MI	126	115				
MN	229	230	220	220	9	10
MS	127	117	54	51	73	66
MO	145	135				
NE	175	200	175	200	0	0
NY	89	94				
NC	272	260	148	132	124	128
OH	497	498				
OK	64	76	40	48	24	28
OR	59	61	57	59	2	2
PA	472	445	456	430	16	15
SC	111	104	92	85	19	19
SD	43	45	43	45	0	0
TX	329	341	283	290	46	51
VA	83	78	41	41	42	37
WA	118	121				
WI	77	76				
30 Sts	5,912	5,801	5,036	4,913	876	888
Oth Sts 3/	360	329	300	262	60	67
US	6,272	6,130	5,336	5,175	936	955

1/ 1995 revised.

2/ Data by type of flock not shown for some States to avoid disclosing individual operations.

3/ Estimates for individual States are not available.

Egg Production: By Type, State, and United States,  
September 1994-95 1/

State	Total Production		Table Eggs 2/		Hatching Eggs 2/	
	1994	1995	1994	1995	1994	1995
	Million Eggs					
AL	224	217	110	97	114	120
AR	315	291	145	117	170	174
CA	533	518				
CO	64	66				
CT	81	79				
FL	201	192	189	181	12	11
GA	362	340	217	198	145	142
HI	16	15	16	15	0	0
IL	62	59	61	58	1	1
IN	450	436	439	427	11	9
IA	326	324				
ME	118	113				
MD	70	87	63	81	7	6
MI	122	108				
MN	219	226	210	217	9	9
MS	127	114	55	47	72	67
MO	145	136				
NE	176	189	176	189	0	0
NY	88	89				
NC	269	258	148	133	121	125
OH	483	492				
OK	67	73	43	46	24	27
OR	61	56	59	54	2	2
PA	459	437	444	422	15	15
SC	110	102	91	84	19	18
SD	40	41	40	41	0	0
TX	316	337	272	288	44	49
VA	79	76	41	39	38	37
WA	121	118				
WI	75	69				
30 Sts	5,779	5,658	4,930	4,795	849	863
0th Sts 3/	346	318	288	254	58	64
US	6,125	5,976	5,218	5,049	907	927

1/ 1995 preliminary.

2/ Data by type of flock not shown for some States to avoid disclosing individual operations.

3/ Estimates for individual States are not available.

Forced Molt: Percent of All Layers by Month,  
United States, 1994-95 1/

Month	Percent Being Molted		Percent with Molt Completed	
	1994	1995	1994	1995
	Percent			
Jan	4.5	4.6	22.4	23.8
Feb	5.4	6.4	21.4	23.6
Mar	3.7	4.8	21.1	24.0
Apr	2.7	3.4	21.0	23.7
May	5.6	5.8	20.2	22.3
Jun	5.6	6.0	21.4	22.9
Jul	5.0	4.9	22.4	23.1
Aug	4.5	4.1	23.0	23.2
Sep	4.7	4.7	22.8	23.1
Oct	5.1	5.1	23.4	23.2
Nov				
Dec				

1/ As of first of month.

Forced Molt: Percent of All Layers by State  
and United States, 1994-95 1/

State	October			
	Percent Being Molted		Percent with Molt Completed	
	1994	1995	1994	1995
	Percent			
AL	3.0	3.0	18.0	14.0
AR	3.0	2.5	12.5	9.0
CA	12.0	9.5	45.0	44.5
CO	5.5	8.0	26.0	24.0
CT	0.0	3.5	14.5	16.0
FL	6.0	8.5	24.0	44.5
GA	4.5	7.0	24.5	20.0
HI	5.5	5.0	45.5	57.5
IL	7.0	11.5	21.5	42.0
IN	3.0	4.5	30.5	25.5
IA	5.5	5.0	30.0	34.0
ME	0.0	0.5	0.0	1.0
MD	4.0	10.0	28.5	32.5
MI	3.0	5.5	14.5	23.5
MN	8.0	5.0	22.5	32.5
MS	2.5	3.5	14.0	15.0
MO	3.5	4.0	26.5	25.5
NE	4.0	8.5	30.0	19.5
NY	2.0	1.0	11.0	6.0
NC	3.5	4.0	19.0	12.5
OH	4.0	2.5	12.5	12.5
OK	6.0	4.5	14.0	10.5
OR	5.5	11.0	31.5	41.0
PA	5.5	3.0	16.0	18.0
SC	8.5	4.5	22.5	25.0
SD	0.5	16.0	45.0	15.5
TX	5.5	3.0	25.0	23.0
VA	3.0	4.5	12.5	12.0
WA	6.0	5.0	34.5	42.0
WI	7.0	10.5	22.0	21.0
30 Sts	5.1	5.1	23.4	23.4
Oth Sts 2/	5.1	4.3	23.5	19.5
US	5.1	5.1	23.4	23.2

1/ As of first of month.

2/ Estimates for individual States are not available.

Hatchery Production: Eggs in Incubators, Chicks Hatched,  
and Placements by Type, United States, September-October 1994-95

Item	1994	1995	1995 as % of 1994
	----- 1,000 -----		Percent
<b>Egg-Type</b>			
Eggs in Incubators on Oct 1	28,356	29,632	104
Chicks Hatched During Sep	30,873	32,112	104
Chicks Hatched Jan thru Sep	292,561	293,047	100
Pullets Hatched During Sep for Intended:			
Placements in Hatchery Supply Flocks	315	292	93
7-18 Month Earlier 1/	2,853	3,117	109
<b>Broiler-Type</b>			
Eggs in Incubators on Oct 1	501,080	537,802	107
Chicks Hatched During Sep	625,867	634,272	101
Chicks Hatched Jan thru Sep	5,675,606	5,938,799	105
Pullets Hatched During Sep for Intended:			
Placements in Hatchery Supply Flocks	6,336	6,288	99
7-14 Months Earlier 2/	44,879	48,307	108

1/ 1995 includes pullet chicks hatched Mar 1994 through Feb 1995.

2/ 1995 includes pullet chicks hatched Jul 1994 through Feb 1995.

Egg-Type Eggs in Incubators: By Region and United States,  
October 1, 1994-95

Geographic Division	1994	1995	1995 as % of 1994
	----- 1,000 -----		Percent
North Atlantic	4,029	3,930	98
E North Central	8,177	8,597	105
W North Central	4,494	4,539	101
South Atlantic	4,693	4,886	104
South Central	3,100	3,642	117
West	3,863	4,038	105
US	28,356	29,632	104

Regional Listing:

North Atlantic = CT, ME, MA, NH, NJ, NY, PA, RI, VT.

E North Central = IL, IN, MI, OH, WI.

W North Central = IA, KS, MN, MO, NE, ND, SD.

South Atlantic = DE, FL, GA, MD, NC, SC, VA, WV.

South Central = AL, AR, KY, LA, MS, OK, TN, TX.

West = AK, AZ, CA, CO, HI, ID, MT, NM, NV, OR, UT, WA, WY.

Egg-Type Chicks Hatched: By State and United States,  
September 1994-95

State	September			Jan-Sep		
	1994	1995	1995 as % of 1994	1994	1995	1995 as % of 1994
	----- 1,000 -----		Percent	----- 1,000 -----		Percent
AR	822	1,071	130	9,566	9,798	102
FL	959	1,135	118	9,479	9,431	99
GA	1,928	1,943	101	15,996	16,191	101
IN	6,715	7,739	115	57,869	62,600	108
IA	2,073	2,092	101	22,376	21,846	98
KS	331	362	109	2,538	2,467	97
MN	2,091	2,044	98	17,723	19,573	110
MO	360	355	99	4,624	4,161	90
PA	4,452	2,616	59	39,632	30,481	77
Oth Sts 1/	11,142	12,755	114	112,758	116,499	103
US	30,873	32,112	104	292,561	293,047	100

1/ Not published separately to avoid disclosing data for individual operations.

Egg-Type Chicks Hatched: By Month, United States, 1993-95

Month:	By Months				Cumulative			
	1993	1994	1995	1995 as % of 1994	1993	1994	1995	1995 as % of 1994
	----- 1,000 -----			Percent	----- 1,000 -----			Percent
Jan	34,855	33,212	31,527	95	34,855	33,212	31,527	95
Feb	34,009	31,086	31,693	102	68,864	64,298	63,220	98
Mar	38,264	33,492	34,806	104	107,128	97,790	98,026	100
Apr	37,163	35,668	34,101	96	144,291	133,458	132,127	99
May	36,742	35,336	36,335	103	181,033	168,794	168,462	100
Jun	35,587	31,986	33,392	104	216,620	200,780	201,854	101
Jul	33,980	29,613	28,682	97	250,600	230,393	230,536	100
Aug	31,455	31,295	30,399	97	282,055	261,688	260,935	100
Sep	31,775	30,873	32,112	104	313,830	292,561	293,047	100
Oct	31,634	31,766			345,464	324,327		
Nov	30,074	25,475			375,538	349,802		
Dec	30,448	29,072			405,986	378,874		

Intended Placements: Egg-Type Pullet Chicks for Hatchery Supply  
 Flocks by Month and Total, United States, 1993-95 1/

Month	Pullet Chicks Hatched			1995 as % of 1994	Cumulative Potential Placements Relative to Current Supply Flocks 7-18 Months Earlier 2/		
	1993	1994	1995		1994	1995	1996
	1,000			Percent	1,000		
Jan	193	197	236	120	2,806	2,916	3,093
Feb	119	186	251	135	2,812	2,937	3,064
Mar	268	259	356	137	2,754	3,027	2,918
Apr	251	277	317	114	2,787	3,072	2,895
May	275	334	193	58	2,801	3,091	
Jun	267	254	234	92	2,690	3,156	
Jul	243	264	235	89	2,782	3,013	
Aug	219	309	163	53	2,786	3,052	
Sep	270	315	292	93	2,853	3,117	
Oct	251	270			2,844	3,214	
Nov	158	223			2,870	3,254	
Dec	268	125			2,929	3,113	
Total	2,782	3,013					

1/ Reported by leading breeders. Coverage may not be 100 percent. Includes expected pullet chicks from eggs sold during the preceding month at the rate of 125 pullet chicks per 30 dozen case of eggs.

2/ For September 1995, includes breeder pullet chicks hatched Mar 1994 through Feb 1995.

Broiler-Type Eggs in Incubators: By Region  
 and United States, October 1, 1994-95

Geographic Division	1994	1995	1995 as % of 1994
	1,000		Percent
North Atlantic	11,319	11,681	103
E North Central	6,085	7,042	116
W North Central	13,134	15,965	122
South Atlantic	202,110	216,742	107
South Central	250,626	266,487	106
West	17,806	19,885	112
US	501,080	537,802	107



Broiler-Type Chicks Hatched: Number by State  
and United States, September 1994-95

State	September			Jan-Sep		
	1994	1995	1995 as % of 1994	1994	1995	1995 as % of 1994
	1,000	1,000	Percent	1,000	1,000	Percent
AL	86,089	84,355	98	798,503	818,408	102
AR	101,698	102,006	100	929,670	927,714	100
DE	15,653	16,144	103	141,620	150,450	106
FL	11,545	9,853	85	108,113	90,930	84
GA	88,127	90,559	103	804,025	860,207	107
MD	30,105	29,933	99	283,618	281,083	99
MS	52,506	52,411	100	461,120	485,513	105
NC	58,039	61,103	105	530,744	563,756	106
PA	11,111	10,336	93	103,447	100,614	97
SC	14,687	14,848	101	134,318	137,974	103
TX	36,384	38,804	107	324,651	351,129	108
VA	22,773	22,679	100	203,668	212,906	105
CA TN & WV	30,618	31,769	104	292,093	306,804	105
15 Sts 1/	559,335	564,800	101	5,115,590	5,287,488	103
OR & WA	5,981	5,298	89	53,676	51,005	95
Oth Sts 2/	60,551	64,174	106	506,340	600,306	119
US	625,867	634,272	101	5,675,606	5,938,799	105

1/ States in the weekly hatchery production estimating program.

2/ Not published separately to avoid disclosing data for individual operations.

Broiler Chicks Hatched: By Month, United States, 1993-95

Month	By Months			Cumulative				
	1993	1994	1995 as % of 1994	1993	1994	1995 as % of 1994		
	1,000	1,000	Percent	1,000	1,000	Percent		
Jan	598,798	618,112	661,389	107	598,798	618,112	661,389	107
Feb	547,831	558,590	598,962	107	1,146,629	1,176,702	1,260,351	107
Mar	622,983	639,967	677,334	106	1,769,612	1,816,669	1,937,685	107
Apr	600,861	627,051	662,372	106	2,370,473	2,443,720	2,600,057	106
May	634,371	658,690	689,650	105	3,004,844	3,102,410	3,289,707	106
Jun	619,453	647,163	669,390	103	3,624,297	3,749,573	3,959,097	106
Jul	619,009	646,456	672,822	104	4,243,306	4,396,029	4,631,919	105
Aug	612,381	653,710	672,608	103	4,855,687	5,049,739	5,304,527	105
Sep	582,781	625,867	634,272	101	5,438,468	5,675,606	5,938,799	105
Oct	584,260	617,957			6,022,728	6,293,563		
Nov	574,803	597,276			6,597,531	6,890,839		
Dec	623,237	658,914			7,220,768	7,549,753		

Intended Placements: Broiler-Type Pullet Chicks for Hatchery  
Supply Flocks by Month and Total, 1993-95 1/

Month	Pullet Chicks Hatched			1995 as % of 1994	Cumulative Potential Placements Relative to Current Supply Flocks 7-14 Months Earlier 2/		
	1993	1994	1995		1994	1995	1996
	----- 1,000 -----			Percent	----- 1,000 -----		
US Place- ments							
Jan	5,664	5,989	5,748	96	42,665	47,272	48,255
Feb	4,549	5,518	5,481	99	43,906	47,859	48,738
Mar	5,678	6,301	6,161	98	44,486	48,254	48,789
Apr	5,531	6,101	6,319	104	43,943	48,601	49,329
May	5,944	6,266	6,135	98	44,907	49,425	
Jun	5,568	5,911	6,178	105	44,746	48,943	
Jul	5,967	6,104	6,302	103	44,884	49,255	
Aug	5,585	6,064	6,464	107	44,929	48,737	
Sep	5,121	6,336	6,288	99	44,879	48,307	
Oct	5,513	6,342			45,213	48,364	
Nov	5,517	5,819			45,729	48,620	
Dec	5,669	6,413			46,874	48,419	
Annual Total	66,306	73,164					
Total Place- ments <sup>3/</sup>							
Jan	7,098	7,168	7,038	98			
Feb	5,664	6,829	7,176	105			
Mar	6,909	7,544	7,577	100			
Apr	6,420	7,234	7,835	108			
May	7,182	7,394	7,873	106			
Jun	6,723	7,153	7,485	105			
Jul	7,114	7,146	7,730	108			
Aug	6,587	7,290	7,838	108			
Sep	6,177	7,545	7,730	102			
Oct	6,634	7,959					
Nov	6,718	7,251					
Dec	6,949	7,908					
Annual Total	80,175	88,421					

1/ Reported by leading breeders. Coverage may not be 100 percent. Includes expected pullet chicks from eggs sold during the preceding month at the rate of 125 pullet chicks per 30 dozen case of eggs.

2/ For Sep 1995, includes breeder pullet chicks hatched Jul 1994 through Feb 1995.

3/ U.S. production of intended placements worldwide.

## Procedures and Reliability

**Data Sources:** Primary data for the "**Chickens and Eggs**" report are from weekly and/or monthly questionnaires sent to producers. An attempt is made to collect information for layer and egg estimates from each known contractor and independent producer who has over 30,000 table egg layers. Coverage for operations with less than 30,000 table egg layers are estimated each month based on data reported in December. Approximately 900 contractors, independent egg producers, and started pullet operations are contacted each month. All known hatcheries, approximately 360, are contacted for information on a weekly and/or monthly basis.

**Revisions:** The previous month's estimates are subject to revision if late reports or corrected data indicates a different level. Additionally, revisions needed after the monthly report will be made at the end of the marketing year and published in the annual summaries of "**Layers and Egg Production**" and "**Hatchery Production**".

**Procedures and Reliability:** Operations are mailed a questionnaire and given adequate time to respond by mail. Those that do not respond are phoned. Great care is exercised to ensure that all operations are accounted for during each survey period. However, there are usually missing reports that must be accounted for in the estimates.

Sound statistical methodology is employed to derive estimates from the reported data. All data are checked for unusual values. All operations' data are compared to their own past operating profiles and also to trends from other operations. Data for missing operations are estimated based on similar operations or historical data. Survey data are subject to non-sampling errors such as omissions and mistakes in reporting and in processing. While these errors cannot be measured directly, they are minimized by reviewing all data for consistency and reasonableness.

Egg-type chicks hatched are comprised of all chicks of egg-type domesticated breeds including males and chicks destined for hatchery supply flocks and research purposes. The relationship of chicks hatched to chicken inventory and poultry marketings is carefully monitored. The disposition of egg-type chicks hatched prior to placement into the laying flock can vary significantly, which can make comparisons to changes in layer inventory inconsistent over time.

Intended placement data reported by leading breeders include pullet chicks expected from eggs sold the preceding month. The breeders in this report account for a large percentage of replacement pullets for hatchery supply flocks. Production of replacement pullets by these breeders indicates the number of pullets available to hatchery egg supply flocks several months before the pullets will actually move into the flocks.

The next "Chickens and Eggs" report will be released at 3 p.m. ET on November 21, 1995.

The United States Department of Agriculture (USDA) prohibits discrimination in its programs on the basis of race, color, national origin, sex, religion, age, disability, political beliefs, and marital or familial status. Persons with disabilities who require alternative means for communication of program information (braille, large print, audiotape, etc.) should contact the USDA Office of Communications at (202) 720-5881 (voice) or (202) 720-7808 (TDD).

To file a complaint, write the Secretary of Agriculture, USDA, Washington, D.C., 20250, or call (202) 720-7327 (voice) or (202) 720-1127 (TDD). USDA is an equal employment opportunity employer.

## **SUBSCRIBE TODAY!!**

---

For your convenience, there are several ways to obtain NASS reports, data products, and services:

### **INTERNET ACCESS**

All NASS reports are now available free of charge on the worldwide Internet. For access, connect to the Internet and select:

1. **Worldwide Web:**  
<http://www.usda.gov/nass/> **OR**
2. **For Gopher/Telenet/FTP access:**  
HOST=usda.mannlib.cornell.edu **OR**
3. **For a subscription direct to your e-mail address, send an e-mail message to:**  
[usda-reports@usda.mannlib.cornell.edu](mailto:usda-reports@usda.mannlib.cornell.edu) and in the body of the message type the word: lists

---

### **PRINTED REPORTS OR DATA PRODUCTS**

**CALL OUR TOLL-FREE ORDER DESK: 1-800-999-6779 (U.S. and Canada)**

Other areas, please call 1-703-834-0125 FAX: 1-703-834-0110

(Visa, MasterCard, check, or money order acceptable for payment.)

---

### **ASSISTANCE**

For **assistance** with general agricultural statistics or further information about NASS or its products or services, contact the **NASS INFORMATION HOTLINE 1-800-727-9540**, 8:00 a.m. to 4:30 p.m., or e-mail: [NASS@AG.GOV](mailto:NASS@AG.GOV).

---