

Chickens and Eggs



United States
Department of
Agriculture

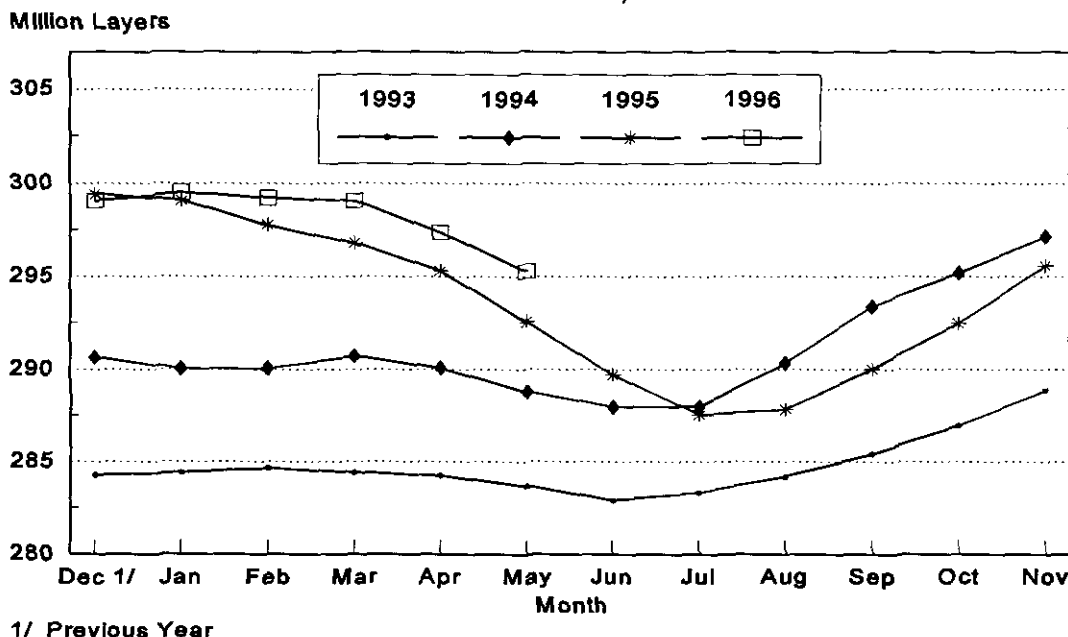
Washington, D.C.

Released June 24, 1996, by the National Agricultural Statistics Service (NASS), Agricultural Statistics Board, U.S. Department of Agriculture. For information on "Chickens and Eggs" call Dan Boostrom at (202) 720-3244, office hours 8:00 a.m. to 4:30 p.m. ET. For assistance with general agricultural statistics, information about NASS, its products or services, contact the NASS Information Hotline at 1-800-727-9540 or E-mail: NASS@NASS.USDA.GOV. Estimates refer to April, May and June 1996.

May Egg Production up 2 percent

U.S. egg production totaled 6.35 billion during May 1996, up 2 percent from the 6.25 billion produced in 1995. Production included 5.35 billion table eggs and 997 million hatching egg type, of which 933 million were broiler-type and 64.0 million were egg-type. The total number of layers during May 1996 averaged 295 million, up 1 percent from the average number of layers during May 1995. May egg production per 100 layers was 2,151 eggs, compared with 2,137 in May 1995.

Average Number of Layers United States, 1993-96



All layers in the U.S. on June 1, 1996, totaled 295 million, up one percent from a year ago. The 295 million layers consisted of 242 million layers producing table or commercial type eggs, 50.1 million layers producing broiler-type hatching eggs, and 2.67 million layers producing egg-type hatching eggs. Rate of lay per day on June 1, 1996, averaged 69.4 eggs per 100 layers, the same as last year.

Laying flocks in the 30 major egg production States produced 6.01 billion eggs during May, up 2 percent from May 1995. The average number of layers during May, at 279 million, was up 1 percent from the year earlier.

Individual State estimates are available for the 30 major egg producing States. These States are listed on page 8 of this release and account for approximately 95 percent of the total U.S. egg production. Production for the other States are grouped into an "Other States" category and combined with the 30 States published individually to obtain a U.S. estimate. Individual State estimates' for "Other States" are available annually in the "**Layers and Egg Production**" report.

Egg-Type Chicks Hatched Up 3 Percent

Egg-type chicks **hatched** during May totaled 38.5 million, up 3 percent from May 1995. **Eggs in incubators** totaled 32.2 million on June 1, 1996, up 4 percent from a year ago.

Domestic placements of **egg-type pullet chicks for future hatchery supply flocks** by leading breeders totaled 291,000 during May 1996, up 51 percent from the 193,000 of May 1995.

Broiler Hatch Up 1 Percent

The May 1996 **hatch** of broiler-type chicks, at 698 million, was 1 percent above May of the previous year. There were 571 million **eggs in incubators** on June 1, 1996, up 1 percent from a year earlier.

Leading breeders placed 6.78 million **broiler-type pullet chicks for future domestic hatchery supply flocks** during May 1996, up 10 percent from May 1995.

For information call Tom Kruchten at (202) 690-4870

Layers: Average Number During the Month,
United States, 1993-96 1/

Month	1993	1994	1995	1996
	1,000 Layers			
Dec 2/	284,267	290,642	299,434	299,066
Jan	284,398	290,041	299,084	299,513
Feb	284,638	290,047	297,759	299,222
Mar	284,405	290,719	296,796	299,066
Apr	284,234	290,073	295,293	297,367
May	283,694	288,784	292,548	295,262
Jun	282,914	287,974	289,705	
Jul	283,324	287,990	287,557	
Aug	284,192	290,321	287,837	
Sep	285,418	293,381	290,021	
Oct	286,948	295,172	292,459	
Nov	288,875	297,134	295,562	

1/ Data are for chart on cover page.

2/ December preceding year.

Eggs: Production During the Month by Type,
United States, 1995-96

Month	Total Eggs		Table Eggs		Hatching Eggs	
	1995	1996	1995	1996	1995	1996
	Million Eggs					
Dec 1/	6,516	6,534	5,568	5,559	948	975
Jan	6,369	6,411	5,417	5,433	952	978
Feb	5,714	5,971	4,854	5,053	860	918
Mar	6,448	6,513	5,492	5,523	956	990
Apr	6,177	6,254	5,238	5,295	939	959
May	6,251	6,350	5,271	5,353	980	997
Jun	6,010		5,060		950	
Jul	6,145		5,179		966	
Aug	6,146		5,191		955	
Sep	5,990		5,063		927	
Oct	6,260		5,301		959	
Nov	6,232		5,298		934	
During Year:	74,258	38,033	62,932	32,216	11,326	5,817

1/ December preceding year.

Eggs and Layers: Layers on Hand and Eggs Produced by Type,
and Forced Molt, United States, April-May

Item	1995	1996 1/	1996 as % of 1995
<hr/>			
Layers During Apr (1,000)			
All Layers	295,293	297,367	101
Table Egg Type	242,812	244,346	101
Hatching Egg Type	52,481	53,021	101
Broiler-Type Hatching	49,578	50,303	101
Egg-Type Hatching	2,903	2,718	94
Eggs per 100 Layers During Apr (Number)			
All Layers	2,092	2,103	101
Table Egg Type	2,157	2,167	100
Hatching Egg Type	1,789	1,809	101
Broiler-Type Hatching	1,761	1,781	101
Egg-Type Hatching	2,274	2,318	102
Eggs Produced During Apr (Million)			
All Layers	6,177	6,254	101
Table Egg Type	5,238	5,295	101
Hatching Egg Type	939	959	102
Broiler-Type Hatching	873	896	103
Egg-Type Hatching	66	63	95
Layers on May 1 (1,000)			
All Layers	294,697	295,805	100
Table Egg Type	242,070	242,969	100
Hatching Egg Type	52,627	52,836	100
Broiler-Type Hatching	49,769	50,150	101
Egg-Type Hatching	2,858	2,686	94
Eggs per 100 Layers on May 1 (Number)			
All Layers	69.1	69.2	100
Table Egg Type	71.0	71.2	100
Hatching Egg Type	60.2	60.3	100
Broiler-Type Hatching	59.2	59.5	101
Egg-Type Hatching	77.2	76.3	99
Forced Molt Layers, May 1			
Percent Being Molted	5.7	5.5	96
Percent with Molt Completed	22.4	22.2	99

1/ Revised.

Eggs and Layers: Layers on Hand and Eggs Produced by Type,
and Forced Molt, United States, May-June 1995-96

Item	1995	1996 1/	1996 as % of 1995

Layers During May (1,000)			
All Layers	292,548	295,262	101
Table Egg Type	240,248	242,448	101
Hatching Egg Type	52,300	52,814	101
Broiler-Type Hatching	49,477	50,130	101
Egg-Type Hatching	2,823	2,684	95
Eggs per 100 Layers During May (Number)			
All Layers	2,137	2,151	101
Table Egg Type	2,194	2,208	101
Hatching Egg Type	1,874	1,888	101
Broiler-Type Hatching	1,847	1,861	101
Egg-Type Hatching	2,338	2,385	102
Eggs Produced During May (Million)			
All Layers	6,251	6,350	102
Table Egg Type	5,271	5,353	102
Hatching Egg Type	980	997	102
Broiler-Type Hatching	914	933	102
Egg-Type Hatching	66	64	97
Layers on Jun 1 (1,000)			
All Layers	290,806	294,667	101
Table Egg Type	238,853	241,900	101
Hatching Egg Type	51,953	52,767	102
Broiler-Type Hatching	49,174	50,097	102
Egg-Type Hatching	2,779	2,670	96
Eggs per 100 Layers on Jun 1 (Number)			
All Layers	69.4	69.4	100
Table Egg Type	71.3	71.2	100
Hatching Egg Type	60.8	61.0	100
Broiler-Type Hatching	59.9	60.3	101
Egg-Type Hatching	75.3	75.6	100
Forced Molt Layers, Jun 1			
Percent Being Molted	6.0	4.7	78
Percent with Molt Completed	23.0	22.4	97

1/ Preliminary.

Eggs and Layers: Layers on Hand and Eggs Produced by Type, and Forced Molt, April-May, 30 Selected States, 1995-96 1/

Item	1995	1996 2/	1996 as % of 1995
Layers During Apr (1,000)			
All Layers	279,036	281,510	101
Table Egg Type	230,022	231,980	101
Hatching Egg Type	49,014	49,530	101
Broiler-Type Hatching	46,187	46,908	102
Egg-Type Hatching	2,827	2,622	93
Eggs per 100 Layers During Apr (Number)			
All Layers	2,091	2,103	101
Table Egg Type	2,155	2,166	101
Hatching Egg Type	1,791	1,809	101
Broiler-Type Hatching	1,760	1,780	101
Egg-Type Hatching	2,299	2,326	101
Eggs Produced During Apr (Million)			
All Layers	5,836	5,921	101
Table Egg Type	4,958	5,025	101
Hatching Egg Type	878	896	102
Broiler-Type Hatching	813	835	103
Egg-Type Hatching	65	61	94
Layers on May 1 (1,000)			
All Layers	278,513	279,959	101
Table Egg Type	229,412	230,570	101
Hatching Egg Type	49,101	49,389	101
Broiler-Type Hatching	46,326	46,799	101
Egg-Type Hatching	2,775	2,590	93
Eggs per 100 Layers on May 1 (Number)			
All Layers	69.1	69.2	100
Table Egg Type	71.0	71.1	100
Hatching Egg Type	60.2	60.5	100
Broiler-Type Hatching	59.2	59.6	101
Egg-Type Hatching	77.0	75.9	99
Forced Molt Layers, May 1			
Percent Being Molted	5.7	5.6	98
Percent with Molt Completed	22.4	22.3	100
Layers Sold During Apr (1,000)	17,866	16,826	94
Layers Died, Destroyed, or Disappeared For Any Reason During Apr (1,000)	2,788	2,578	92
Pullets Less Than 20 Weeks of Age, May 1 (1,000)	71,580	71,275	100
Pullets Added During Apr (1,000)	20,173	17,534	87

1/ The 30 States are listed in the table on page 8.

2/ Revised.

Eggs and Layers: Layers on Hand and Eggs Produced by Type, and Forced Molt, May-June, 30 Selected States, 1995-96 1/

Item	1995	1996 2/	1996 as % of 1995
Layers During May (1,000)			
All Layers	276,614	279,267	101
Table Egg Type	227,824	230,005	101
Hatching Egg Type	48,790	49,262	101
Broiler-Type Hatching	46,047	46,672	101
Egg-Type Hatching	2,743	2,590	94
Eggs per 100 Layers During May (Number)			
All Layers	2,135	2,151	101
Table Egg Type	2,192	2,207	101
Hatching Egg Type	1,867	1,890	101
Broiler-Type Hatching	1,839	1,862	101
Egg-Type Hatching	2,333	2,394	103
Eggs Produced During May (Million)			
All Layers	5,905	6,007	102
Table Egg Type	4,994	5,076	102
Hatching Egg Type	911	931	102
Broiler-Type Hatching	847	869	103
Egg-Type Hatching	64	62	97
Layers on Jun 1 (1,000)			
All Layers	275,135	278,539	101
Table Egg Type	226,671	229,424	101
Hatching Egg Type	48,464	49,115	101
Broiler-Type Hatching	45,761	46,535	102
Egg-Type Hatching	2,703	2,580	95
Eggs per 100 Layers on Jun 1 (Number)			
All Layers	69.3	69.4	100
Table Egg Type	71.2	71.2	100
Hatching Egg Type	60.5	61.1	101
Broiler-Type Hatching	59.6	60.3	101
Egg-Type Hatching	75.0	75.3	100
Forced Molt Layers, Jun 1			
Percent Being Molted	6.1	4.7	77
Percent with Molt Completed	22.9	22.6	99
Layers Sold During May (1,000)	17,828	18,958	106
Layers Died, Destroyed, or Disappeared For Any Reason During May (1,000)	3,142	3,121	99
Pullets Less Than 20 Weeks of Age, Jun 1 (1,000)	72,425	72,271	100
Pullets Added During May (1,000)	18,836	22,676	120

1/ The 30 States are listed in the table on page 8.

2/ Preliminary.

Layers and Eggs: Layers on Hand and Eggs Produced by State
and United States, During April 1995-96 1/

State	: Table Egg Layers in : : Flocks 30,000 and Above : All Layers 2/ :				: Eggs per 100 for : All Layers 2/ :	
	: 1995	: 1996	: 1995	: 1996	: 1995	: 1996
	: ----- 1,000 -----				: ----- Number -----	
AL	4,641	4,254	11,630	10,826	1,917	1,921
AR	5,890	5,345	15,965	15,497	1,867	1,839
CA	24,962	24,061	25,536	24,600	2,091	2,146
CO	2,656	2,625	3,217	3,228	2,114	2,076
CT	3,412	3,338	3,596	3,479	2,225	2,213
FL	8,284	8,240	8,927	8,915	2,196	2,120
GA	10,184	10,721	17,921	18,709	2,070	2,036
HI	712	729	758	767	2,058	1,950
IL	2,581	3,001	2,774	3,189	2,199	2,320
IN	20,374	20,321	21,255	21,378	2,150	2,138
IA	16,125	17,678	16,990	18,542	1,954	2,184
ME	4,890	4,735	5,049	4,878	2,238	2,378
MD	3,388	3,799	3,953	4,243	2,125	2,027
MI	4,968	4,825	5,250	5,091	2,205	2,163
MN	10,218	11,145	11,078	11,990	2,130	2,135
MS	2,348	2,333	6,254	6,382	1,951	1,927
MO	5,765	5,330	6,628	6,466	2,127	2,057
NE	8,875	8,846	9,025	8,996	2,223	2,175
NY	3,379	3,675	3,727	4,002	2,254	2,299
NC	6,400	5,819	14,030	13,506	1,882	1,873
OH	21,878	23,159	22,256	23,644	2,233	2,233
OK	2,043	1,963	3,761	3,841	1,968	1,927
OR	2,366	2,535	2,572	2,735	2,216	2,267
PA	20,135	19,635	21,520	20,983	2,207	2,221
SC	4,071	3,673	5,065	4,676	2,152	2,117
SD	1,553	1,925	1,793	2,138	2,157	2,097
TX	12,381	13,378	15,776	16,581	2,035	2,051
VA	1,632	1,657	3,841	3,804	1,953	1,866
WA	5,279	4,921	5,560	5,164	2,176	2,246
WI	2,787	2,765	3,329	3,260	2,133	2,147
30 Sts	224,177	226,431	279,036	281,510	2,091	2,103
Oth Sts 3/	11,425	11,042	16,257	15,857	2,098	2,100
US	235,602	237,473	295,293	297,367	2,092	2,103

1/ 1996 revised.

2/ Includes all layers and eggs produced in both table egg and hatching egg flocks regardless of size.

3/ Estimates for individual States are not available.

Layers and Eggs: Layers on Hand and Eggs Produced by State
and United States, During May 1995-96 1/

State	Table Egg Layers in : Flocks 30,000 and Above :				Eggs per 100 for : All Layers 2/ :	
	1995	1996	1995	1996	1995	1996
	1,000				Number	
AL	4,523	4,056	11,460	10,566	1,990	1,978
AR	5,920	5,219	15,999	15,204	1,919	1,934
CA	24,348	23,744	24,893	24,300	2,141	2,202
CO	2,548	2,676	3,083	3,272	2,206	2,109
CT	3,379	3,345	3,561	3,483	2,218	2,239
FL	7,930	8,126	8,597	8,799	2,233	2,103
GA	9,839	10,296	17,556	18,225	2,079	2,052
HI	711	719	760	754	2,034	1,956
IL	2,595	3,027	2,795	3,222	2,147	2,390
IN	20,445	20,214	21,303	21,288	2,187	2,189
IA	15,978	17,667	16,856	18,538	2,005	2,249
ME	4,810	4,735	4,972	4,883	2,333	2,458
MD	3,362	4,036	3,899	4,501	2,231	2,155
MI	4,938	4,809	5,216	5,071	2,263	2,217
MN	10,283	11,045	11,143	11,875	2,145	2,189
MS	2,299	2,290	6,247	6,409	2,017	1,982
MO	5,770	5,348	6,670	6,516	2,174	2,056
NE	8,875	8,764	9,025	8,914	2,229	2,189
NY	3,374	3,626	3,711	3,947	2,290	2,382
NC	6,232	5,445	13,710	13,021	1,955	1,943
OH	21,676	23,377	22,058	23,866	2,298	2,258
OK	2,023	1,960	3,761	3,833	2,021	2,009
OR	2,493	2,503	2,698	2,703	2,372	2,257
PA	19,695	19,250	21,040	20,565	2,243	2,256
SC	4,069	3,674	5,040	4,718	2,222	2,120
SD	1,608	1,945	1,855	2,160	2,226	2,145
TX	12,548	13,214	15,951	16,411	2,019	2,090
VA	1,580	1,659	3,815	3,805	2,018	1,971
WA	5,349	4,938	5,631	5,173	2,255	2,300
WI	2,779	2,745	3,309	3,245	2,115	2,219
30 Sts	221,979	224,452	276,614	279,267	2,135	2,151
Oth Sts 3/	11,072	11,142	15,934	15,995	2,171	2,144
US	233,051	235,594	292,548	295,262	2,137	2,151

1/ 1996 preliminary.

2/ Includes all layers and eggs produced in both table egg and hatching egg flocks regardless of size.

3/ Estimates for individual States are not available.

Egg Production: By Type, State, and United States,
April 1995-96 1/

State	Total Production		Table Eggs 2/		Hatching Eggs 2/	
	1995	1996	1995	1996	1995	1996
	Million Eggs					
AL	223	208	100	91	123	117
AR	298	285	126	106	172	179
CA	534	528				
CO	68	67				
CT	80	77				
FL	196	189	185	176	11	13
GA	371	381	227	228	144	153
HI	15	15	15	15	0	0
IL	61	74	60	73	1	1
IN	457	457	447	448	10	9
IA	332	405				
ME	113	116				
MD	84	86	75	79	9	7
MI	116	110				
MN	236	256	226	245	10	11
MS	122	123	53	49	69	74
MO	141	133				
NE	201	196	201	196	0	0
NY	84	92				
NC	264	253	139	125	125	128
OH	497	528				
OK	74	74	48	46	26	28
OR	57	62	55	60	2	2
PA	475	466	458	449	17	17
SC	109	99	91	82	18	17
SD	39	44	39	44	0	0
TX	321	340	272	288	49	52
VA	75	71	37	35	38	36
WA	121	116				
WI	71	70				
30 Sts	5,836	5,921	4,958	5,025	878	896
Oth Sts 3/	341	333	280	270	61	63
US	6,177	6,254	5,238	5,295	939	959

1/ 1996 revised.

2/ Data by type of flock not shown for some States to avoid disclosing individual operations.

3/ Estimates for individual States are not available.

Egg Production: By Type, State, and United States,
May 1995-96 1/

State	Total Production		Table Eggs 2/		Hatching Eggs 2/	
	1995	1996	1995	1996	1995	1996
	Million Eggs					
AL	228	209	100	90	128	119
AR	307	294	125	108	182	186
CA	533	535				
CO	68	69				
CT	79	78				
FL	192	185	180	172	12	13
GA	365	374	216	218	149	156
HI	15	15	15	15	0	0
IL	60	77	59	76	1	1
IN	466	466	456	456	10	10
IA	338	417				
ME	116	120				
MD	87	97	78	90	9	7
MI	118	112				
MN	239	260	229	249	10	11
MS	126	127	53	49	73	78
MO	145	134				
NE	201	195	201	195	0	0
NY	85	94				
NC	268	253	140	121	128	132
OH	507	539				
OK	76	77	49	47	27	30
OR	64	61	62	59	2	2
PA	472	464	454	447	18	17
SC	112	100	94	82	18	18
SD	41	46	41	46	0	0
TX	322	343	271	287	51	56
VA	77	75	37	36	40	39
WA	127	119				
WI	70	72				
30 Sts	5,905	6,007	4,994	5,076	911	931
Oth Sts 3/	346	343	277	277	69	66
US	6,251	6,350	5,271	5,353	980	997

1/ 1996 preliminary.

2/ Data by type of flock not shown for some States to avoid disclosing individual operations.

3/ Estimates for individual States are not available.

Forced Molt: Percent of All Layers by Month,
United States, 1995-96 1/

Month	Percent Being Molted		Percent with Molt Completed	
	1995	1996	1995	1996
	Percent			
Jan	4.6	3.7	23.9	24.3
Feb	6.3	5.5	23.7	22.4
Mar	4.8	3.5	24.1	23.4
Apr	3.4	2.0	23.8	22.9
May	5.7	5.5	22.4	22.2
Jun	6.0	4.7	23.0	22.4
Jul	4.9		23.4	
Aug	4.1		23.4	
Sep	4.6		23.3	
Oct	5.1		23.3	
Nov	3.6		24.2	
Dec	2.2		25.5	

1/ As of first of month.

Forced Molt: Percent of All Layers by State
and United States, June 1995-96 1/

State	Percent Being Molted		Percent with Molt Completed	
	1995	1996	1995	1996
	Percent			
AL	4.0	3.0	11.0	9.5
AR	6.5	3.5	10.0	9.5
CA	11.0	5.0	40.5	43.0
CO	8.0	2.0	18.0	26.0
CT	5.0	4.0	11.0	9.0
FL	11.5	12.5	35.0	42.0
GA	7.5	5.5	18.5	21.5
HI	11.0	10.0	46.0	50.0
IL	15.0	6.5	26.5	26.0
IN	2.5	3.5	32.0	21.0
IA	9.0	5.0	32.0	32.0
ME	1.0	1.0	.5	.0
MD	5.0	4.5	25.0	50.5
MI	2.5	7.0	20.0	18.0
MN	5.0	4.0	26.0	24.5
MS	3.0	4.0	15.5	13.5
MO	3.5	4.0	21.0	27.0
NE	9.5	5.5	19.0	30.5
NY	2.0	3.0	7.0	4.5
NC	2.0	3.5	14.5	10.5
OH	5.5	3.5	15.5	8.5
OK	3.0	4.0	14.0	14.5
OR	5.5	9.0	38.0	35.0
PA	4.0	6.0	23.0	19.0
SC	6.5	3.5	33.5	33.0
SD	.5	5.5	15.5	39.5
TX	9.0	4.5	20.5	21.0
VA	2.5	2.5	16.5	11.5
WA	5.0	7.5	43.5	40.5
WI	9.0	2.5	28.5	26.5
30 Sts	6.1	4.7	22.9	22.6
Oth Sts 2/	4.0	4.5	24.8	18.5
US	6.0	4.7	23.0	22.4

1/ As of first of month.

2/ Estimates for individual States are not available.

Hatchery Production: Eggs in Incubators, Chicks Hatched,
and Placements by Type, United States, May-June 1995-96

Item	1995	1996	1996 as % of 1995
	----- 1,000 -----		Percent
Egg-Type			
Eggs in Incubators on Jun 1	30,990	32,237	104
Chicks Hatched During May	37,482	38,477	103
Chicks Hatched Jan thru May	173,643	177,916	102
Pullets Hatched During May for Intended:			
Placements in Hatchery Supply Flocks	193	291	151
7-18 Months Earlier 1/	3,119	2,951	95
Broiler-Type			
Eggs in Incubators on Jun 1	564,587	571,385	101
Chicks Hatched During May	692,004	698,176	101
Chicks Hatched Jan thru May	3,297,836	3,385,782	103
Pullets Hatched During May for Intended:			
Placements in Hatchery Supply Flocks	6,135	6,776	110
7-15 Months Earlier 2/	54,930	55,356	101

1/ 1996 includes pullet chicks hatched Nov 1994 through Oct 1995.

2/ 1996 includes pullet chicks hatched Feb 1995 through Oct 1995.

Egg-Type Eggs in Incubators: By Region and United States,
June 1, 1995-96

Geographic Division	1995	1996	1996 as % of 1995
	----- 1,000 -----		Percent
North Atlantic	3,996	4,534	113
E North Central	7,881	8,573	109
W North Central	6,551	6,022	92
South Atlantic	4,983	4,836	97
South Central	2,843	3,313	117
West	4,736	4,959	105
US	30,990	32,237	104

Regional Listing:

North Atlantic = CT, ME, MA, NH, NJ, NY, PA, RI, VT.

E North Central = IL, IN, MI, OH, WI.

W North Central = IA, KS, MN, MO, NE, ND, SD.

South Atlantic = DE, FL, GA, MD, NC, SC, VA, WV.

South Central = AL, AR, KY, LA, MS, OK, TN, TX.

West = AK, AZ, CA, CO, HI, ID, MT, NM, NV, OR, UT, WA, WY.

Egg-Type Chicks Hatched: By State and United States,
May 1995-96

State	May			Jan-May		
	1995	1996	1996 as % of 1995	1995	1996	1996 as % of 1995
	1,000		Percent	1,000		Percent
AR	1,417	1,001	71	5,743	4,655	81
FL	1,097	1,367	125	4,973	5,561	112
GA	2,138	2,275	106	9,128	10,706	117
IN	7,954	8,196	103	35,364	38,113	108
IA	3,070	3,760	122	17,485	16,215	93
KS	182	265	146	1,132	1,255	111
MN	2,335	2,178	93	10,651	10,652	100
MO	611	414	68	2,407	1,624	67
PA	3,930	4,410	112	17,094	19,635	115
Oth Sts 1/	14,748	14,611	99	69,666	69,500	100
US	37,482	38,477	103	173,643	177,916	102

1/ Not published separately to avoid disclosing data for individual operations.

Egg-Type Chicks Hatched: By Month, United States, 1994-96

Month	By Months			Cumulative				
	1994	1995	1996	1996 as % of 1995	1994	1995	1996	1996 as % of 1995
	1,000		Percent	1,000		Percent		Percent
Jan	33,236	32,375	31,547	97	33,236	32,375	31,547	97
Feb	31,086	32,745	34,652	106	64,322	65,120	66,199	102
Mar	33,489	36,021	37,687	105	97,811	101,141	103,886	103
Apr	35,657	35,020	35,553	102	133,468	136,161	139,439	102
May	35,322	37,482	38,477	103	168,790	173,643	177,916	102
Jun	31,985	34,948			200,775	208,591		
Jul	29,613	29,554			230,388	238,145		
Aug	31,295	31,434			261,683	269,579		
Sep	31,587	33,578			293,270	303,157		
Oct	32,066	33,384			325,336	336,541		
Nov	26,075	29,130			351,411	365,671		
Dec	30,166	30,797			381,577	396,468		

Intended Placements: Egg-Type Pullet Chicks for Hatchery Supply
Flocks by Month and Total, United States, 1994-96 1/

Month	Pullet Chicks Hatched			: 1996 : as % of: : 1995	Cumulative Potential Placements Relative to Current Supply Flocks 7-18 Months Earlier 2/		
	: 1994	: 1995	: 1996		: 1994	: 1995	: 1996
		1,000		Percent		1,000	
Jan	213	236	171	72	3,021	3,022	3,108
Feb	184	251	238	95	3,041	3,009	3,089
Mar	259	356	317	89	2,997	3,075	2,943
Apr	277	317	252	79	3,033	3,106	2,920
May	334	193	291	151	3,051	3,119	2,951
Jun	257	234			2,944	3,187	2,835
Jul	254	235			3,025	3,045	2,941
Aug	309	163			3,011	3,068	2,876
Sep	315	292			3,052	3,135	2,863
Oct	278	309			3,019	3,232	2,824
Nov	240	124			3,021	3,272	2,759
Dec	125	231			3,056	3,131	2,857
Total	3,045	2,941					

1/ Reported by leading breeders. Coverage may not be 100 percent. Includes expected pullet chicks from eggs sold during the preceding month at the rate of 125 pullet chicks per 30 dozen case of eggs.

2/ For May 1996, includes breeder pullet chicks hatched Nov 1994 through Oct 1995. The 7-18 months represent the first laying cycle. Molting and additional laying cycles will increase the cumulative potential placements.

Broiler-Type Eggs in Incubators: By Region
and United States, June 1, 1995-96

Geographic Division	: 1995	: 1996	: 1996 as % of 1995
		1,000	Percent
North Atlantic	12,207	11,745	96
E North Central	7,945	8,331	105
W North Central	19,296	22,409	116
South Atlantic	223,047	221,947	100
South Central	279,381	283,665	102
West	22,711	23,288	103
US	564,587	571,385	101

Broiler-Type Chicks Hatched: By State
and United States, May 1995-96

State	May			Jan-May		
	1995	1996	1996 as % of 1995	1995	1996	1996 as % of 1995
	----- 1,000 -----		Percent	----- 1,000 -----		Percent
AL	93,326	87,562	94	459,965	426,875	93
AR	106,191	105,233	99	511,024	525,151	103
DE	16,760	16,167	96	83,199	80,550	97
FL	11,127	9,936	89	49,363	50,799	103
GA	100,388	104,220	104	476,654	510,461	107
MD	32,271	31,598	98	157,419	157,972	100
MS	56,022	59,292	106	269,478	280,471	104
NC	66,366	64,300	97	311,530	315,664	101
PA	11,640	12,292	106	55,558	56,634	102
SC	15,762	15,266	97	76,830	75,958	99
TX	41,500	42,921	103	192,883	205,894	107
VA	24,350	23,280	96	118,301	116,927	99
CA TN & WV	35,501	36,199	102	168,523	171,571	102
15 Sts 1/	611,204	608,266	100	2,930,727	2,974,927	102
OR & WA	6,132	6,314	103	28,281	28,606	101
Oth Sts 2/	74,668	83,596	112	338,828	382,249	113
US	692,004	698,176	101	3,297,836	3,385,782	103

1/ States in the weekly hatchery production estimating program.

2/ Not published separately to avoid disclosing data for individual operations.

Broiler Chicks Hatched: By Month, United States, 1994-96

Month	By Months			Cumulative		
	1994	1995	1996 as % of 1995	1994	1995	1996 as % of 1995
	----- 1,000 -----		Percent	----- 1,000 -----		Percent
Jan	618,111	662,476	104	618,111	662,476	104
Feb	558,589	600,116	108	1,176,700	1,262,592	106
Mar	640,316	679,090	102	1,817,016	1,941,682	104
Apr	627,050	664,150	100	2,444,066	2,605,832	103
May	658,689	692,004	101	3,102,755	3,297,836	103
Jun	647,342	670,839		3,750,097	3,968,675	
Jul	646,875	673,687		4,396,972	4,642,362	
Aug	654,309	674,068		5,051,281	5,316,430	
Sep	626,706	638,901		5,677,987	5,955,331	
Oct	620,679	654,221		6,298,666	6,609,552	
Nov	600,055	627,767		6,898,721	7,237,319	
Dec	663,595	691,193		7,562,316	7,928,512	

Intended Placements: Broiler-Type Pullet Chicks for Hatchery
Supply Flocks by Month and Total, 1994-96 1/

Month	Pullet Chicks Hatched			: 1996 : as % of: : 1995	Cumulative Potential Placements Relative to Current Supply Flocks 7-15 Months Earlier 2/		
	1994	1995	1996		1994	1995	1996
	----- 1,000 -----			Percent	----- 1,000 -----		
US							
Place-							
ments							
Jan	5,988	5,710	5,538	97	49,351	53,071	54,562
Feb	5,452	5,484	5,916	108	49,810	53,563	54,522
Mar	6,334	6,161	6,374	103	50,568	53,808	55,178
Apr	6,121	6,320	6,442	102	50,583	54,576	55,053
May	6,266	6,135	6,776	110	50,432	54,930	55,356
Jun	5,911	6,178			51,552	55,297	56,528
Jul	6,104	6,302			51,343	55,376	56,585
Aug	6,064	6,475			51,667	54,965	55,803
Sep	6,336	6,288			51,076	54,183	55,584
Oct	6,342	6,013			51,743	54,433	55,781
Nov	5,819	6,656			51,798	54,649	55,921
Dec	6,413	6,218			52,380	54,720	56,222
Annual							
Total	73,150	73,940					
Total							
Place-							
ments3/							
Jan	7,171	7,040	6,782	96			
Feb	6,762	7,180	7,167	100			
Mar	7,464	7,577	7,645	101			
Apr	7,284	7,835	7,664	98			
May	7,394	7,873	8,234	105			
Jun	7,382	7,485					
Jul	7,146	7,730					
Aug	7,290	7,850					
Sep	7,545	7,730					
Oct	7,959	7,301					
Nov	7,251	7,784					
Dec	7,908	7,750					
Annual							
Total	88,556	91,135					

1/ Reported by leading breeders. Coverage may not be 100 percent. Includes expected pullet chicks from eggs sold during the preceding month at the rate of 125 pullet chicks per 30 dozen case of eggs.

2/ For May 1996, includes breeder pullet chicks hatched Feb 1995 through Oct 1995.

3/ U.S. production of intended placements worldwide.

Procedures and Reliability

Data Sources: Primary data for the "Chickens and Eggs" report are from weekly and/or monthly questionnaires sent to producers. An attempt is made to collect information for layer and egg estimates from each known contractor and independent producer who has over 30,000 table egg layers. Coverage for operations with less than 30,000 table egg layers are estimated each month based on data reported in December. Approximately 900 contractors, independent egg producers, and started pullet operations are contacted each month. All known hatcheries, approximately 360, are contacted for information on a weekly and/or monthly basis.

Revisions: The previous month's estimates are subject to revision if late reports or corrected data indicates a different level. Additionally, revisions needed after the monthly report will be made at the end of the marketing year and published in the annual summaries of "Layers and Egg Production" and "Hatchery Production".

Procedures and Reliability: Operations are mailed a questionnaire and given adequate time to respond by mail. Those that do not respond are phoned. Great care is exercised to ensure that all operations are accounted for during each survey period. However, there are usually missing reports that must be accounted for in the estimates.

Sound statistical methodology is employed to derive estimates from the reported data. All data are checked for unusual values. All operations' data are compared to their own past operating profiles and also to trends from other operations. Data for missing operations are estimated based on similar operations or historical data. Survey data are subject to non-sampling errors such as omissions and mistakes in reporting and in processing. While these errors cannot be measured directly, they are minimized by reviewing all data for consistency and reasonableness.

Egg-type chicks hatched are comprised of all chicks of egg-type domesticated breeds including males and chicks destined for hatchery supply flocks and research purposes. The relationship of chicks hatched to chicken inventory and poultry marketings is carefully monitored. The disposition of egg-type chicks hatched prior to placement into the laying flock can vary significantly, which can make comparisons to changes in layer inventory inconsistent over time.

Intended placement data reported by leading breeders include pullet chicks expected from eggs sold the preceding month. The breeders in this report account for a large percentage of replacement pullets for hatchery supply flocks. Production of replacement pullets by these breeders indicates the number of pullets available to hatchery egg supply flocks several months before the pullets will actually move into the flocks. Beginning with the January 1996 publication the broiler-type cumulative potential placements went from 7-14 months earlier to 7-15 months earlier. The egg-type cumulative potential placements of 7-18 months represent the first laying cycle. Molting and additional laying cycles will increase the cumulative potential placements of egg-type hatching flocks.

The next "**Chickens and Eggs**" report will be released at 3 p.m. ET on July 23, 1996.

The United States Department of Agriculture (USDA) prohibits discrimination in its programs on the basis of race, color, national origin, sex, religion, age, disability, political beliefs, and marital or familial status. Persons with disabilities who require alternative means for communication of program information (braille, large print, audiotape, etc.) should contact the USDA Office of Communications at (202) 720-5881 (voice) or (202) 720-7808 (TDD).

To file a complaint, write the Secretary of Agriculture, USDA, Washington, D.C., 20250, or call (202) 720-7327 (voice) or (202) 720-1127 (TDD). USDA is an equal employment opportunity employer.

SUBSCRIBE TODAY!!

For your convenience, there are several ways to obtain NASS reports, data products, and services:

INTERNET ACCESS

All NASS reports are now available free of charge on the worldwide Internet. For access, connect to the Internet and select:

1. Worldwide Web:
<http://www.usda.gov/nass/> **OR**
2. For Gopher/Telenet/FTP access:
HOST=usda.mannlib.cornell.edu **OR**
3. For a subscription direct to your e-mail address,
send an e-mail message to:
usda-reports@usda.mannlib.cornell.edu
and in the body of the message type the word: list

PRINTED REPORTS OR DATA PRODUCTS

CALL OUR TOLL-FREE ORDER DESK: 1-800-999-6779 (U.S. and Canada)
Other areas, please call 1-703-834-0125 FAX: 1-703-834-0110
(Visa, MasterCard, check, or money order acceptable for payment.)

ASSISTANCE

For **assistance** with general agricultural statistics or further information about NASS or its products or services, contact the NASS **INFORMATION HOTLINE** at **1-800-727-9540**, 8:00 a.m. to 4:30 p.m., or e-mail: **NASS@NASS.USDA.GOV**.
