

# Chickens and Eggs



United States  
Department of  
Agriculture

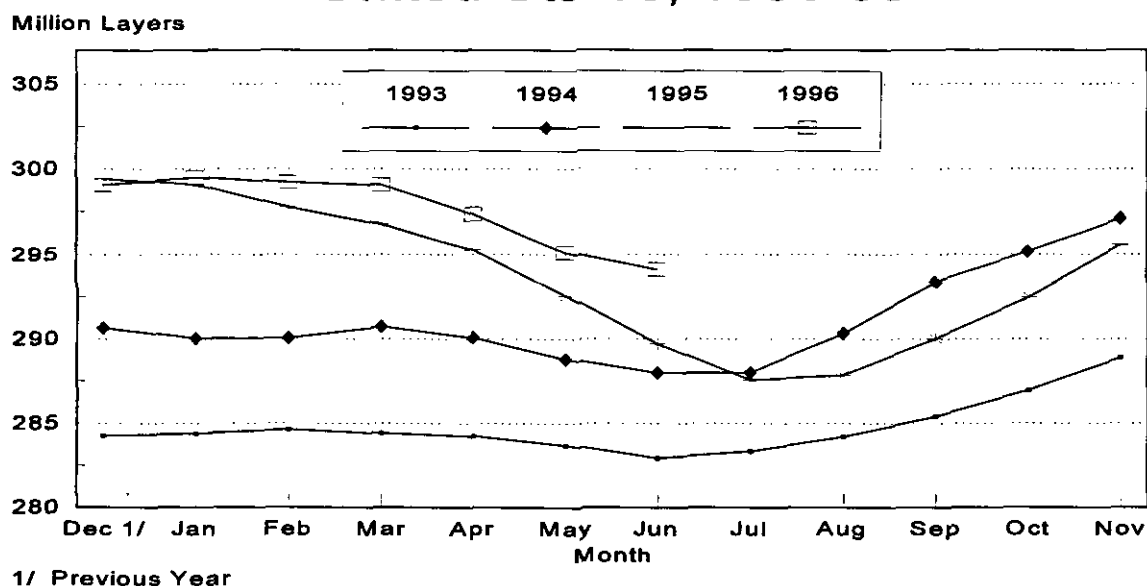
Washington, D.C.

Released July 23, 1996, by the National Agricultural Statistics Service (NASS), Agricultural Statistics Board, U.S. Department of Agriculture. For information on "Chickens and Eggs" call Dan Boostrom at (202) 720-3244, office hours 8:00 a.m. to 4:30 p.m. ET. For assistance with general agricultural statistics, information about NASS, its products or services, contact the NASS Information Hotline at 1-800-727-9540 or E-mail: NASS@NASS.USDA.GOV. The "Chickens and Eggs" U.S. Summary is available on AutoFax, (202) 720-2000, report 4200. See page 20. Estimates refer to May, June, and July 1996.

## June Egg Production up 3 percent

U.S. egg production totaled 6.17 billion during June 1996, up 3 percent from the 6.01 billion produced in 1995. Production included 5.21 billion table eggs and 956 million hatching egg type, of which 897 million were broiler-type and 59.0 million were egg-type. The total number of layers during June 1996 averaged 294 million, up 2 percent from the average number of layers during June 1995. June egg production per 100 layers was 2,098 eggs, compared with 2,075 in June 1995.

## Average Number of Layers United States, 1993-96



All layers in the U.S. on July 1, 1996, totaled 294 million, up 2 percent from a year ago. The 294 million layers consisted of 242 million layers producing table or commercial type eggs, 49.4 million layers producing broiler-type hatching eggs, and 2.63 million layers producing egg-type hatching eggs. Rate of lay per day on July 1, 1996, averaged 70.3 eggs per 100 layers, up one percent from the 69.5 a year ago.

Laying flocks in the 30 major egg production States produced 5.83 billion eggs during June, up 3 percent from June 1995. The average number of layers during June, at 278 million, was up 1 percent from the year earlier.

Individual State estimates are available for the 30 major egg producing States. These States are listed on page 8 of this release and account for approximately 95 percent of the total U.S. egg production. Production for the other States are grouped into an "Other States" category and combined with the 30 States published individually to obtain a U.S. estimate. Individual State estimates for "Other States" are available annually in the "**Layers and Egg Production**" report.

#### **Egg-Type Chicks Hatched Down 3 Percent**

Egg-type chicks **hatched** during June totaled 34.0 million, down 3 percent from June 1995. **Eggs in incubators** totaled 29.4 million on July 1, 1996, up 8 percent from a year ago.

Domestic placements of **egg-type pullet chicks for future hatchery supply flocks** by leading breeders totaled 282,000 during June 1996, up 21 percent from the 234,000 of June 1995.

#### **Broiler Hatch Down Slightly**

The June 1996 **hatch** of broiler-type chicks, at 671 million, was down slightly from June of the previous year. There were 563 million **eggs in incubators** on July 1, 1996, up 1 percent from a year earlier.

Leading breeders placed 6.17 million **broiler-type pullet chicks for future domestic hatchery supply flocks** during June 1996, down slightly from June 1995.

**For information call Tom Kruchten at (202) 690-4870**

Layers: Average Number During the Month,  
United States, 1993-96 1/

Month	1993	1994	1995	1996
1,000 Layers				
Dec 2/	284,267	290,642	299,434	299,066
Jan	284,398	290,041	299,084	299,513
Feb	284,638	290,047	297,759	299,222
Mar	284,405	290,719	296,796	299,066
Apr	284,234	290,073	295,293	297,367
May	283,694	288,784	292,548	295,133
Jun	282,914	287,974	289,705	294,118
Jul	283,324	287,990	287,557	
Aug	284,192	290,321	287,837	
Sep	285,418	293,381	290,021	
Oct	286,948	295,172	292,459	
Nov	288,875	297,134	295,562	

1/ Data are for chart on cover page.

2/ December preceding year.

Eggs: Production During the Month by Type,  
United States, 1995-96

Month	Total Eggs		Table Eggs		Hatching Eggs	
	1995	1996	1995	1996	1995	1996
Million Eggs						
Dec 1/	6,516	6,534	5,568	5,559	948	975
Jan	6,369	6,411	5,417	5,433	952	978
Feb	5,714	5,971	4,854	5,053	860	918
Mar	6,448	6,513	5,492	5,523	956	990
Apr	6,177	6,254	5,238	5,295	939	959
May	6,251	6,351	5,271	5,354	980	997
Jun	6,010	6,169	5,060	5,213	950	956
Jul	6,145		5,179		966	
Aug	6,146		5,191		955	
Sep	5,990		5,063		927	
Oct	6,260		5,301		959	
Nov	6,232		5,298		934	
During Year:	74,258	44,203	62,932	37,430	11,326	6,773

1/ December preceding year.

Eggs and Layers: Layers on Hand and Eggs Produced by Type,  
and Forced Molt, United States, May-June

Item	:	1995	:	1996 1/	:	1996 as % of 1995
-----						
:						
Layers During May	(1,000)					
All Layers		292,548		295,133		101
Table Egg Type		240,248		242,319		101
Hatching Egg Type		52,300		52,814		101
Broiler-Type Hatching		49,477		50,130		101
Egg-Type Hatching		2,823		2,684		95
:						
Eggs per 100 Layers During May	(Number)					
All Layers		2,137		2,152		101
Table Egg Type		2,194		2,209		101
Hatching Egg Type		1,874		1,888		101
Broiler-Type Hatching		1,847		1,861		101
Egg-Type Hatching		2,338		2,385		102
:						
Eggs Produced During May	(Million)					
All Layers		6,251		6,351		102
Table Egg Type		5,271		5,354		102
Hatching Egg Type		980		997		102
Broiler-Type Hatching		914		933		102
Egg-Type Hatching		66		64		97
:						
Layers on Jun 1	(1,000)					
All Layers		290,806		294,408		101
Table Egg Type		238,853		241,641		101
Hatching Egg Type		51,953		52,767		102
Broiler-Type Hatching		49,174		50,097		102
Egg-Type Hatching		2,779		2,670		96
:						
Eggs per 100 Layers on Jun 1	(Number)					
All Layers		69.4		69.5		100
Table Egg Type		71.3		71.3		100
Hatching Egg Type		60.8		61.0		100
Broiler-Type Hatching		59.9		60.3		101
Egg-Type Hatching		75.3		75.6		100
:						
Forced Molt Layers, Jun 1						
Percent Being Molted		6.0		4.7		78
Percent with Molt Completed		23.0		22.3		97

1/ Revised.

Eggs and Layers: Layers on Hand and Eggs Produced by Type,  
and Forced Molt, United States, June-July 1995-96

Item	1995	1996 1/	1996 as % of 1995
Layers During Jun (1,000)			
All Layers	289,705	294,118	102
Table Egg Type	237,903	241,710	102
Hatching Egg Type	51,802	52,408	101
Broiler-Type Hatching	49,052	49,753	101
Egg-Type Hatching	2,750	2,655	97
Eggs per 100 Layers During Jun (Number)			
All Layers	2,075	2,098	101
Table Egg Type	2,127	2,157	101
Hatching Egg Type	1,834	1,824	99
Broiler-Type Hatching	1,816	1,803	99
Egg-Type Hatching	2,145	2,222	104
Eggs Produced During Jun (Million)			
All Layers	6,010	6,169	103
Table Egg Type	5,060	5,213	103
Hatching Egg Type	950	956	101
Broiler-Type Hatching	891	897	101
Egg-Type Hatching	59	59	100
Layers on Jul 1 (1,000)			
All Layers	289,018	293,783	102
Table Egg Type	237,391	241,758	102
Hatching Egg Type	51,627	52,025	101
Broiler-Type Hatching	48,920	49,393	101
Egg-Type Hatching	2,707	2,632	97
Eggs per 100 Layers on Jul 1 (Number)			
All Layers	69.5	70.3	101
Table Egg Type	71.3	72.4	102
Hatching Egg Type	61.4	60.5	99
Broiler-Type Hatching	60.8	59.8	98
Egg-Type Hatching	73.2	72.8	99
Forced Molt Layers, Jul 1			
Percent Being Molted	4.9	3.8	78
Percent with Molt Completed	23.4	23.1	99

1/ Preliminary.

Eggs and Layers: Layers on Hand and Eggs Produced by Type, and Forced Molt, May-June, 30 Selected States, 1995-96 1/

Item	1995	1996 2/	1996 as % of 1995
Layers During May (1,000)			
All Layers	276,614	279,138	101
Table Egg Type	227,824	229,876	101
Hatching Egg Type	48,790	49,262	101
Broiler-Type Hatching	46,047	46,672	101
Egg-Type Hatching	2,743	2,590	94
Eggs per 100 Layers During May (Number)			
All Layers	2,135	2,152	101
Table Egg Type	2,192	2,209	101
Hatching Egg Type	1,867	1,890	101
Broiler-Type Hatching	1,839	1,862	101
Egg-Type Hatching	2,333	2,394	103
Eggs Produced During May (Million)			
All Layers	5,905	6,008	102
Table Egg Type	4,994	5,077	102
Hatching Egg Type	911	931	102
Broiler-Type Hatching	847	869	103
Egg-Type Hatching	64	62	97
Layers on Jun 1 (1,000)			
All Layers	275,135	278,280	101
Table Egg Type	226,671	229,165	101
Hatching Egg Type	48,464	49,115	101
Broiler-Type Hatching	45,761	46,535	102
Egg-Type Hatching	2,703	2,580	95
Eggs per 100 Layers on Jun 1 (Number)			
All Layers	69.3	69.5	100
Table Egg Type	71.2	71.3	100
Hatching Egg Type	60.5	61.1	101
Broiler-Type Hatching	59.6	60.3	101
Egg-Type Hatching	75.0	75.3	100
Forced Molt Layers, Jun 1			
Percent Being Molted	6.1	4.7	77
Percent with Molt Completed	22.9	22.5	98
Layers Sold During May (1,000)	17,828	19,373	109
Layers Died, Destroyed, or Disappeared For Any Reason During May (1,000)	3,142	3,144	100
Pullets Less Than 20 Weeks of Age, Jun 1 (1,000)	72,425	72,136	100
Pullets Added During May (1,000)	18,836	22,865	121

1/ The 30 States are listed in the table on page 8.

2/ Revised.

Eggs and Layers: Layers on Hand and Eggs Produced by Type, and Forced Molt, June-July, 30 Selected States, 1995-96 1/

Item	1995	1996 2/	1996 as % of 1995
Layers During Jun (1,000)			
All Layers	274,053	277,952	101
Table Egg Type	225,710	229,251	102
Hatching Egg Type	48,343	48,701	101
Broiler-Type Hatching	45,675	46,131	101
Egg-Type Hatching	2,668	2,570	96
Eggs per 100 Layers During Jun (Number)			
All Layers	2,074	2,099	101
Table Egg Type	2,126	2,157	101
Hatching Egg Type	1,831	1,825	100
Broiler-Type Hatching	1,811	1,804	100
Egg-Type Hatching	2,174	2,218	102
Eggs Produced During Jun (Million)			
All Layers	5,683	5,833	103
Table Egg Type	4,798	4,944	103
Hatching Egg Type	885	889	100
Broiler-Type Hatching	827	832	101
Egg-Type Hatching	58	57	98
Layers on Jul 1 (1,000)			
All Layers	273,398	277,591	102
Table Egg Type	225,195	229,323	102
Hatching Egg Type	48,203	48,268	100
Broiler-Type Hatching	45,583	45,715	100
Egg-Type Hatching	2,620	2,553	97
Eggs per 100 Layers on Jul 1 (Number)			
All Layers	69.5	70.3	101
Table Egg Type	71.3	72.4	102
Hatching Egg Type	61.4	60.6	99
Broiler-Type Hatching	60.7	59.9	99
Egg-Type Hatching	73.1	72.5	99
Forced Molt Layers, Jul 1			
Percent Being Molted	4.9	3.8	78
Percent with Molt Completed	23.4	23.3	100
Layers Sold During Jun (1,000)	17,516	17,038	97
Layers Died, Destroyed, or Disappeared For Any Reason During Jun (1,000)	3,333	3,130	94
Pullets Less Than 20 Weeks of Age, Jul 1 (1,000)	69,438	72,735	105
Pullets Added During Jun (1,000)	21,144	21,098	100

1/ The 30 States are listed in the table on page 8.

2/ Preliminary.

Layers and Eggs: Layers on Hand and Eggs Produced by State  
and United States, During May 1995-96 1/

State	Table Egg Layers in Flocks 30,000 and Above		All Layers 2/		Eggs per 100 for All Layers 2/	
	1995	1996	1995	1996	1995	1996
	----- 1,000 -----				----- Number -----	
AL	4,523	4,056	11,460	10,566	1,990	1,978
AR	5,920	5,219	15,999	15,204	1,919	1,934
CA	24,348	23,744	24,893	24,300	2,141	2,202
CO	2,548	2,676	3,083	3,272	2,206	2,109
CT	3,379	3,345	3,561	3,483	2,218	2,239
FL	7,930	8,126	8,597	8,799	2,233	2,103
GA	9,839	10,296	17,556	18,225	2,079	2,052
HI	711	719	760	754	2,034	1,956
IL	2,595	3,027	2,795	3,222	2,147	2,390
IN	20,445	20,214	21,303	21,288	2,187	2,189
IA	15,978	17,667	16,856	18,538	2,005	2,249
ME	4,810	4,835	4,972	4,984	2,333	2,528
MD	3,362	3,906	3,899	4,371	2,231	2,105
MI	4,938	4,709	5,216	4,971	2,263	2,217
MN	10,283	11,045	11,143	11,875	2,145	2,189
MS	2,299	2,290	6,247	6,409	2,017	1,982
MO	5,770	5,348	6,670	6,516	2,174	2,056
NE	8,875	8,764	9,025	8,914	2,229	2,189
NY	3,374	3,626	3,711	3,947	2,290	2,382
NC	6,232	5,445	13,710	13,021	1,955	1,943
OH	21,676	23,377	22,058	23,866	2,298	2,258
OK	2,023	1,960	3,761	3,833	2,021	2,009
OR	2,493	2,503	2,698	2,703	2,372	2,257
PA	19,695	19,250	21,040	20,565	2,243	2,256
SC	4,069	3,674	5,040	4,718	2,222	2,120
SD	1,608	1,945	1,855	2,160	2,226	2,145
TX	12,548	13,214	15,951	16,411	2,019	2,090
VA	1,580	1,659	3,815	3,805	2,018	1,971
WA	5,349	4,938	5,631	5,173	2,255	2,300
WI	2,779	2,745	3,309	3,245	2,115	2,219
30 Sts	221,979	224,322	276,614	279,138	2,135	2,152
Oth Sts 3/	11,072	11,142	15,934	15,995	2,171	2,144
US	233,051	235,464	292,548	295,133	2,137	2,152

1/ 1996 revised.

2/ Includes all layers and eggs produced in both table egg and hatching egg flocks regardless of size.

3/ Estimates for individual States are not available.



Layers and Eggs: Layers on Hand and Eggs Produced by State  
and United States, During June 1995-96 1/

State	Table Egg Layers in : Flocks 30,000 and Above :				Eggs per 100 for : All Layers 2/ :	
	1995	1996	1995	1996	1995	1996
	----- 1,000 -----				----- Number -----	
AL	4,661	3,894	11,408	10,398	1,946	1,923
AR	5,726	5,136	15,894	14,788	1,869	1,880
CA	23,615	23,967	24,145	24,521	2,096	2,161
CO	2,548	2,617	3,114	3,178	2,087	2,077
CT	3,361	3,432	3,536	3,567	2,149	2,187
FL	8,053	8,216	8,708	8,863	2,170	2,042
GA	9,811	10,104	17,447	18,062	1,966	2,021
HI	720	707	769	738	1,932	1,929
IL	2,671	3,051	2,879	3,250	2,049	2,308
IN	20,177	19,952	21,013	21,057	2,127	2,170
IA	16,090	17,572	16,975	18,422	1,950	2,160
ME	4,801	4,859	4,960	5,008	2,238	2,416
MD	3,247	3,734	3,770	4,234	2,202	2,126
MI	4,845	4,508	5,116	4,760	2,205	2,190
MN	10,085	11,105	10,943	11,933	2,111	2,112
MS	2,246	2,276	6,057	6,384	1,948	1,958
MO	5,750	5,388	6,646	6,553	2,107	1,999
NE	8,925	8,903	9,075	9,053	2,103	2,046
NY	3,401	3,504	3,730	3,807	2,306	2,233
NC	5,954	5,347	13,458	12,692	1,910	1,875
OH	21,308	23,741	21,691	24,201	2,227	2,182
OK	2,010	1,958	3,715	3,868	1,992	1,965
OR	2,561	2,415	2,752	2,607	2,326	2,340
PA	19,505	19,230	20,846	20,538	2,173	2,196
SC	3,875	3,665	4,841	4,675	2,190	2,053
SD	1,608	1,905	1,855	2,118	2,235	2,196
TX	12,569	12,913	15,951	16,101	1,969	2,043
VA	1,674	1,737	3,865	3,961	1,966	1,969
WA	5,305	5,002	5,562	5,242	2,211	2,270
WI	2,805	2,879	3,332	3,373	2,071	2,224
30 Sts	219,907	223,717	274,053	277,952	2,074	2,099
Oth Sts 3/	10,847	11,161	15,652	16,166	2,089	2,078
US	230,754	234,878	289,705	294,118	2,075	2,098

1/ 1996 preliminary.

2/ Includes all layers and eggs produced in both table egg and hatching egg flocks regardless of size.

3/ Estimates for individual States are not available.

Egg Production: By Type, State, and United States,  
May 1995-96 1/

State	Total Production		Table Eggs 2/		Hatching Eggs 2/	
	1995	1996	1995	1996	1995	1996
	Million Eggs					
AL	228	209	100	90	128	119
AR	307	294	125	108	182	186
CA	533	535				
CO	68	69				
CT	79	78				
FL	192	185	180	172	12	13
GA	365	374	216	218	149	156
HI	15	14	15	14	0	0
IL	60	77	59	76	1	1
IN	466	466	456	456	10	10
IA	338	417				
ME	116	126				
MD	87	92	78	85	9	7
MI	118	112				
MN	239	260	229	249	10	11
MS	126	127	53	49	73	78
MO	145	134				
NE	201	195	201	195	0	0
NY	85	94				
NC	268	253	140	121	128	132
OH	507	539				
OK	76	77	49	47	27	30
OR	64	61	62	59	2	2
PA	472	464	454	447	18	17
SC	112	100	94	82	18	18
SD	41	46	41	46	0	0
TX	322	343	271	287	51	56
VA	77	75	37	36	40	39
WA	127	119				
WI	70	72				
30 Sts	5,905	6,008	4,994	5,077	911	931
Oth Sts 3/	346	343	277	277	69	66
US	6,251	6,351	5,271	5,354	980	997

1/ 1996 revised.

2/ Data by type of flock not shown for some States to avoid disclosing individual operations.

3/ Estimates for individual States are not available.

Egg Production: By Type, State, and United States,  
June 1995-96 1/

State	Total Production		Table Eggs 2/		Hatching Eggs 2/	
	1995	1996	1995	1996	1995	1996
	Million Eggs					
AL	222	200	101	86	121	114
AR	297	278	114	105	183	173
CA	506	530				
CO	65	66				
CT	76	78				
FL	189	181	177	169	12	12
GA	343	365	199	216	144	149
HI	14	14	14	14	0	0
IL	59	75	58	74	1	1
IN	447	457	438	447	9	10
IA	331	398				
ME	111	121				
MD	83	90	75	83	8	7
MI	113	104				
MN	231	252	221	242	10	10
MS	118	125	49	49	69	76
MO	140	131				
NE	191	185	191	185	0	0
NY	86	85				
NC	257	238	132	115	125	123
OH	483	528				
OK	74	76	47	46	27	30
OR	64	61	62	59	2	2
PA	453	451	437	435	16	16
SC	106	96	88	78	18	18
SD	41	47	41	47	0	0
TX	314	329	264	275	50	54
VA	76	78	37	38	39	40
WA	123	119				
WI	69	75				
30 Sts	5,683	5,833	4,798	4,944	885	889
Oth Sts 3/	327	336	262	269	65	67
US	6,010	6,169	5,060	5,213	950	956

1/ 1996 preliminary.

2/ Data by type of flock not shown for some States to avoid disclosing individual operations.

3/ Estimates for individual States are not available.

Forced Molt: Percent of All Layers by Month,  
United States, 1995-96 1/

Month	Percent Being Molted		Percent with Molt Completed	
	1995	1996	1995	1996
	Percent			
Jan	4.6	3.7	23.9	24.3
Feb	6.3	5.5	23.7	22.4
Mar	4.8	3.5	24.1	23.4
Apr	3.4	2.0	23.8	22.9
May	5.7	5.5	22.4	22.2
Jun	6.0	4.7	23.0	22.3
Jul	4.9	3.8	23.4	23.1
Aug	4.1		23.4	
Sep	4.6		23.3	
Oct	5.1		23.3	
Nov	3.6		24.2	
Dec	2.2		25.5	

1/ As of first of month.

Forced Molt: Percent of All Layers by State  
and United States, July 1995-96 1/

State	Percent Being Molted		Percent with Molt Completed	
	1995	1996	1995	1996
	Percent			
AL	3.5	4.5	13.0	10.5
AR	4.0	3.5	13.5	9.5
CA	11.5	8.0	44.0	45.0
CO	4.0	3.0	17.5	28.0
CT	.0	.0	15.0	13.0
FL	5.5	13.5	37.0	41.5
GA	4.0	2.5	19.0	24.0
HI	6.5	6.0	51.5	55.5
IL	11.0	4.5	29.5	25.5
IN	3.5	1.0	29.0	22.5
IA	8.0	3.0	30.5	34.0
ME	.5	1.5	1.0	.5
MD	10.0	.0	27.0	48.5
MI	.0	.0	22.5	18.0
MN	3.5	3.0	27.5	25.0
MS	3.5	3.0	14.5	14.0
MO	1.5	4.5	21.0	23.5
NE	6.5	7.5	21.0	29.0
NY	1.0	1.5	8.0	7.0
NC	3.0	3.5	13.0	15.5
OH	2.5	2.5	16.0	7.0
OK	3.0	2.5	13.0	13.0
OR	8.5	3.0	37.0	37.0
PA	2.0	3.0	25.0	20.5
SC	7.0	6.0	32.0	26.0
SD	2.0	6.5	15.5	41.0
TX	8.0	4.0	18.0	20.0
VA	4.5	2.5	15.0	13.5
WA	6.5	5.0	40.5	43.5
WI	9.5	2.5	29.0	23.0
30 Sts	4.9	3.8	23.4	23.3
Oth Sts 2/	5.7	3.3	22.5	19.7
US	4.9	3.8	23.4	23.1

1/ As of first of month.

2/ Estimates for individual States are not available.

Hatchery Production: Eggs in Incubators, Chicks Hatched,  
and Placements by Type, United States, June-July 1995-96

Item	1995	1996	1996 as % of 1995
	-----	1,000	-----
			Percent
<b>Egg-Type</b>			
Eggs in Incubators on Jul 1	27,157	29,383	108
Chicks Hatched During Jun	34,948	33,998	97
Chicks Hatched Jan thru Jun	208,591	211,914	102
Pullets Hatched During Jun for Intended:			
Placements in Hatchery Supply Flocks	234	282	121
7-18 Month Earlier 1/	3,187	2,835	89
<b>Broiler-Type</b>			
Eggs in Incubators on Jul 1	555,578	562,657	101
Chicks Hatched During Jun	670,839	670,593	100
Chicks Hatched Jan thru Jun	3,968,675	4,056,375	102
Pullets Hatched During Jun for Intended:			
Placements in Hatchery Supply Flocks	6,178	6,169	100
7-15 Months Earlier 2/	55,297	56,528	102

1/ 1995 includes pullet chicks hatched Dec 1994 through Nov 1995.

2/ 1995 includes pullet chicks hatched Mar 1995 through Nov 1995.

Egg-Type Eggs in Incubators: By Region and United States,  
July 1, 1995-96

Geographic Division	1995	1996	1996 as % of 1995
	-----	1,000	-----
			Percent
North Atlantic	3,971	4,800	121
E North Central	7,105	7,026	99
W North Central	6,027	6,078	101
South Atlantic	4,132	4,398	106
South Central	2,904	2,881	99
West	3,018	4,200	139
US	27,157	29,383	108

Regional Listing:

North Atlantic = CT, ME, MA, NH, NJ, NY, PA, RI, VT.

E North Central = IL, IN, MI, OH, WI.

W North Central = IA, KS, MN, MO, NE, ND, SD.

South Atlantic = DE, FL, GA, MD, NC, SC, VA, WV.

South Central = AL, AR, KY, LA, MS, OK, TN, TX.

West = AK, AZ, CA, CO, HI, ID, MT, NM, NV, OR, UT, WA, WY.

Egg-Type Chicks Hatched: By State and United States,  
June 1995-96

State	June			Jan-Jun		
	1995	1996	1996 as % of 1995	1995	1996	1996 as % of 1995
	----- 1,000 -----		Percent	----- 1,000 -----		Percent
AR	451	895	198	6,194	5,550	90
FL	1,204	1,339	111	6,177	6,900	112
GA	2,069	1,957	95	11,197	12,663	113
IN	7,233	6,502	90	42,597	44,615	105
IA	3,871	3,658	94	21,356	19,873	93
KS	301	236	78	1,433	1,491	104
MN	2,411	2,022	84	13,062	12,674	97
MO	499	376	75	2,906	2,000	69
PA	3,765	3,984	106	20,859	23,619	113
Oth Sts 1/	13,144	13,029	99	82,810	82,529	100
US	34,948	33,998	97	208,591	211,914	102

1/ Not published separately to avoid disclosing data for individual operations.

Egg-Type Chicks Hatched: By Month, United States, 1994-96

Month:	By Months				Cumulative			
	1994	1995	1996	1996 as % of 1995	1994	1995	1996	1996 as % of 1995
	----- 1,000 -----			Percent	----- 1,000 -----			Percent
Jan	33,236	32,375	31,547	97	33,236	32,375	31,547	97
Feb	31,086	32,745	34,652	106	64,322	65,120	66,199	102
Mar	33,489	36,021	37,687	105	97,811	101,141	103,886	103
Apr	35,657	35,020	35,553	102	133,468	136,161	139,439	102
May	35,322	37,482	38,477	103	168,790	173,643	177,916	102
Jun	31,985	34,948	33,998	97	200,775	208,591	211,914	102
Jul	29,613	29,554			230,388	238,145		
Aug	31,295	31,434			261,683	269,579		
Sep	31,587	33,578			293,270	303,157		
Oct	32,066	33,384			325,336	336,541		
Nov	26,075	29,130			351,411	365,671		
Dec	30,166	30,797			381,577	396,468		

Intended Placements: Egg-Type Pullet Chicks for Hatchery Supply  
Flocks by Month and Total, United States, 1994-96 1/

Month	Pullet Chicks Hatched			: 1996 : as % of:	Cumulative Potential Placements Relative to Current Supply Flocks 7-18 Months Earlier 2/		
	: 1994	: 1995	: 1996		: 1995	: 1995	: 1996
	: ----- 1,000 -----			Percent	: ----- 1,000 -----		
Jan	: 213	236	171	72	3,022	3,108	2,905
Feb	: 184	251	238	95	3,009	3,089	
Mar	: 259	356	317	89	3,075	2,943	
Apr	: 277	317	252	79	3,106	2,920	
May	: 334	193	291	151	3,119	2,951	
Jun	: 257	234	282	121	3,187	2,835	
Jul	: 254	235			3,045	2,941	
Aug	: 309	163			3,068	2,876	
Sep	: 315	292			3,135	2,863	
Oct	: 278	309			3,232	2,824	
Nov	: 240	124			3,272	2,759	
Dec	: 125	231			3,131	2,857	
Total	: 3,045	2,941					

1/ Reported by leading breeders. Coverage may not be 100 percent. Includes expected pullet chicks from eggs sold during the preceding month at the rate of 125 pullet chicks per 30 dozen case of eggs.

2/ For June 1996, includes breeder pullet chicks hatched Dec 1994 through Nov 1995. The 7-18 months represent the first laying cycle. Molting and additional laying cycles will increase the cumulative potential placements.

Broiler-Type Eggs in Incubators: By Region  
and United States, July 1, 1995-96

Geographic Division	: 1995	:	: 1996	:	1996
					as % of 1995
	: ----- 1,000 -----			Percent	
North Atlantic	: 11,535		12,596		109
E North Central	: 7,464		7,164		96
W North Central	: 18,347		23,116		126
South Atlantic	: 220,145		221,006		100
South Central	: 275,200		276,941		101
West	: 22,887		21,834		95
US	: 555,578		562,657		101



Broiler-Type Chicks Hatched: By State  
and United States, June 1995-96

State	June			Jan-Jun		
	1995	1996	1996 as % of 1995	1995	1996	1996 as % of 1995
	----- 1,000 -----		Percent	----- 1,000 -----		Percent
AL	90,825	85,838	95	550,790	512,713	93
AR	104,308	104,230	100	615,332	629,381	102
DE	16,855	15,919	94	100,054	96,469	96
FL	10,776	10,305	96	60,139	61,104	102
GA	97,701	100,613	103	574,355	611,074	106
MD	31,060	31,092	100	188,479	189,064	100
MS	54,213	57,826	107	323,691	338,297	105
NC	63,138	59,762	95	374,668	375,426	100
PA	11,472	11,704	102	67,030	68,338	102
SC	15,161	14,750	97	91,991	90,708	99
TX	39,892	40,690	102	232,775	246,584	106
VA	23,774	22,850	96	142,075	139,777	98
CA TN & WV	34,952	34,858	100	203,475	206,429	101
15 Sts 1/	594,127	590,437	99	3,524,854	3,565,364	101
OR & WA	5,877	5,245	89	34,158	33,851	99
Oth Sts 2/	70,835	74,911	106	409,663	457,160	112
US	670,839	670,593	100	3,968,675	4,056,375	102

1/ States in the weekly hatchery production estimating program.

2/ Not published separately to avoid disclosing data for individual operations.

Broiler Chicks Hatched: By Month, United States, 1994-96

Month	By Months			Cumulative				
	1994	1995	1996	1996 as % of 1995	1994	1995	1996	1996 as % of 1995
	----- 1,000 -----			Percent	----- 1,000 -----			Percent
Jan	618,111	662,476	686,359	104	618,111	662,476	686,359	104
Feb	558,589	600,116	646,085	108	1,176,700	1,262,592	1,332,444	106
Mar	640,316	679,090	689,719	102	1,817,016	1,941,682	2,022,163	104
Apr	627,050	664,150	665,443	100	2,444,066	2,605,832	2,687,606	103
May	658,689	692,004	698,176	101	3,102,755	3,297,836	3,385,782	103
Jun	647,342	670,839	670,593	100	3,750,097	3,968,675	4,056,375	102
Jul	646,875	673,687			4,396,972	4,642,362		
Aug	654,309	674,068			5,051,281	5,316,430		
Sep	626,706	638,901			5,677,987	5,955,331		
Oct	620,679	654,221			6,298,666	6,609,552		
Nov	600,055	627,767			6,898,721	7,237,319		
Dec	663,595	691,193			7,562,316	7,928,512		

Intended Placements: Broiler-Type Pullet Chicks for Hatchery  
Supply Flocks by Month and Total, 1994-96 1/

Month	Pullet Chicks Hatched			: 1996 : as % of:	Cumulative Potential Placements Relative to Current Supply Flocks 7-15 Months Earlier 2/		
	: 1994	: 1995	: 1996		: 1995	: 1995	: 1996
		1,000		Percent		1,000	
US							
Place-							
ments							
Jan	: 5,988	5,710	5,538	97	53,071	54,562	56,103
Feb	: 5,452	5,484	5,916	108	53,563	54,522	
Mar	: 6,334	6,161	6,374	103	53,808	55,178	
Apr	: 6,121	6,320	6,442	102	54,576	55,053	
May	: 6,266	6,135	6,776	110	54,930	55,356	
Jun	: 5,911	6,178	6,169	100	55,297	56,528	
Jul	: 6,104	6,302			55,376	56,585	
Aug	: 6,064	6,475			54,965	55,803	
Sep	: 6,336	6,288			54,183	55,584	
Oct	: 6,342	6,013			54,433	55,781	
Nov	: 5,819	6,656			54,649	55,921	
Dec	: 6,413	6,218			54,720	56,222	
Annual							
Total	: 73,150	73,940					
Total							
Place-							
ments3/							
Jan	: 7,171	7,040	6,782	96			
Feb	: 6,762	7,180	7,167	100			
Mar	: 7,464	7,577	7,645	101			
Apr	: 7,284	7,835	7,664	98			
May	: 7,394	7,873	8,234	105			
Jun	: 7,382	7,485	7,467	100			
Jul	: 7,146	7,730					
Aug	: 7,290	7,850					
Sep	: 7,545	7,730					
Oct	: 7,959	7,301					
Nov	: 7,251	7,784					
Dec	: 7,908	7,750					
Annual							
Total	: 88,556	91,135					

1/ Reported by leading breeders. Coverage may not be 100 percent. Includes expected pullet chicks from eggs sold during the preceding month at the rate of 125 pullet chicks per 30 dozen case of eggs.

2/ For Jun 1996, includes breeder pullet chicks hatched Mar 1995 through Nov 1995.

3/ U.S. production of intended placements worldwide.

### Procedures and Reliability

**Data Sources:** Primary data for the "Chickens and Eggs" report are from weekly and/or monthly questionnaires sent to producers. An attempt is made to collect information for layer and egg estimates from each known contractor and independent producer who has over 30,000 table egg layers. Coverage for operations with less than 30,000 table egg layers are estimated each month based on data reported in December. Approximately 900 contractors, independent egg producers, and started pullet operations are contacted each month. All known hatcheries, approximately 360, are contacted for information on a weekly and/or monthly basis.

**Revisions:** The previous month's estimates are subject to revision if late reports or corrected data indicates a different level. Additionally, revisions needed after the monthly report will be made at the end of the marketing year and published in the annual summaries of "Layers and Egg Production" and "Hatchery Production".

**Procedures and Reliability:** Operations are mailed a questionnaire and given adequate time to respond by mail. Those that do not respond are phoned. Great care is exercised to ensure that all operations are accounted for during each survey period. However, there are usually missing reports that must be accounted for in the estimates.

Sound statistical methodology is employed to derive estimates from the reported data. All data are checked for unusual values. All operations' data are compared to their own past operating profiles and also to trends from other operations. Data for missing operations are estimated based on similar operations or historical data. Survey data are subject to non-sampling errors such as omissions and mistakes in reporting and in processing. While these errors cannot be measured directly, they are minimized by reviewing all data for consistency and reasonableness.

Egg-type chicks hatched are comprised of all chicks of egg-type domesticated breeds including males and chicks destined for hatchery supply flocks and research purposes. The relationship of chicks hatched to chicken inventory and poultry marketings is carefully monitored. The disposition of egg-type chicks hatched prior to placement into the laying flock can vary significantly, which can make comparisons to changes in layer inventory inconsistent over time.

Intended placement data reported by leading breeders include pullet chicks expected from eggs sold the preceding month. The breeders in this report account for a large percentage of replacement pullets for hatchery supply flocks. Production of replacement pullets by these breeders indicates the number of pullets available to hatchery egg supply flocks several months before the pullets will actually move into the flocks. Beginning with the January 1996 publication the broiler-type cumulative potential placements went from 7-14 months earlier to 7-15 months earlier. The egg-type cumulative potential placements of 7-18 months represent the first laying cycle. Molting and additional laying cycles will increase the cumulative potential placements of egg-type hatching flocks.

The next "Chickens and Eggs" report will be released at 3:00 p.m. ET on August 22, 1996.

The United States Department of Agriculture (USDA) prohibits discrimination in its programs on the basis of race, color, national origin, sex, religion, age, disability, political beliefs, and marital or familial status. Persons with disabilities who require alternative means for communication of program information (braille, large print, audiotape, etc.) should contact the USDA Office of Communications at (202) 720-5881 (voice) or (202) 720-7808 (TDD).

To file a complaint, write the Secretary of Agriculture, USDA, Washington, D.C., 20250, or call (202) 720-7327 (voice) or (202) 720-1127 (TDD). USDA is an equal employment opportunity employer.

## **SUBSCRIBE TODAY!!**

---

For your convenience, there are several ways to obtain NASS reports, data products, and services:

### **INTERNET ACCESS**

All NASS reports are now available free of charge on the worldwide Internet. For access, connect to the Internet and select:

1. Worldwide Web: <http://www.usda.gov/nass/> **OR**
2. For Gopher/Telenet/FTP access:  
HOST=usda.mannlib.cornell.edu **OR**
3. For a subscription direct to your e-mail address,  
send an e-mail message to: [usda-reports@usda.mannlib.cornell.edu](mailto:usda-reports@usda.mannlib.cornell.edu)  
and in the body of the message type the word: list

### **AUTOFAX ACCESS**

NASSFax service is available for some reports from your fax machine. Please call 202-720-2000, using the handset attached to your fax. Respond to the voice prompts.

---

### **PRINTED REPORTS OR DATA PRODUCTS**

**CALL OUR TOLL-FREE ORDER DESK: 1-800-999-6779 (U.S. and Canada)**  
**Other areas, please call 1-703-834-0125 FAX: 1-703-834-0110**  
**(Visa, MasterCard, check, or money order acceptable for payment.)**

---

### **ASSISTANCE**

For **assistance** with general agricultural statistics or further information about NASS or its products or services, contact the NASS **INFORMATION HOTLINE** at **1-800-727-9540**, 8:00 a.m. to 4:30 p.m., or e-mail: **NASS@NASS.USDA.GOV**.

---