

# Chickens and Eggs



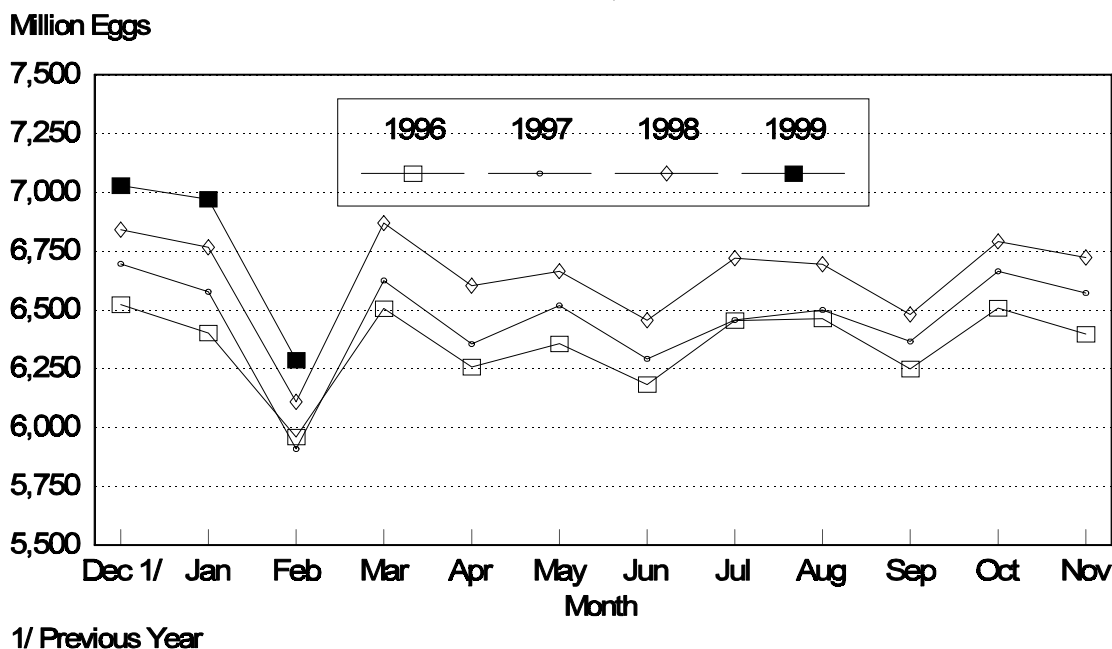
USDA  
Washington, D.C.

Released March 22, 1999, by the National Agricultural Statistics Service (NASS), Agricultural Statistics Board, U.S. Department of Agriculture. For information on "Chickens and Eggs" call Dan Boostrom at (202) 720-3244. For information on Hatch call Tom Kruchten at (202) 690-4870, office hours 7:30 a.m. to 4:00 p.m. ET.

## February Egg Production Up 3 Percent

U.S. egg production totaled 6.29 billion during February 1999, up 3 percent from the 6.11 billion produced in 1998. Production included 5.30 billion table eggs and 987 million hatching eggs, of which 927 million were broiler-type and 60.0 million were egg-type. The total number of layers during February 1999 averaged 323 million, up 3 percent from the total average number of layers during February 1998. February egg production per 100 layers was 1,947 eggs, down fractionally from 1,950 eggs in February 1998.

## All Egg Production By Months United States, 1996 - 1999



All layers in the U.S. on March 1, 1999, totaled 324 million, up 3 percent from a year ago. The 324 million layers consisted of 264 million layers producing table or commercial type eggs, 56.6 million layers producing broiler-type hatching eggs, and 2.86 million layers producing egg-type hatching eggs. Rate of lay per day on March 1, 1999, averaged 69.7 eggs per 100 layers, up fractionally from the 69.6 a year ago.

Laying flocks in the 30 major egg producing States produced 5.95 billion eggs during February, up 3 percent from February 1998. The average number of layers during February, at 305 million, was up 3 percent from a year earlier.

Individual State estimates are available for the 30 major egg producing States. These States are listed on page 8 of this release and account for approximately 95 percent of the total U.S. egg production. Production for the other States are grouped into an "Other States" category and combined with the 30 States published individually to obtain a U.S. estimate. Individual State estimates' for "Other States" are available annually in the "**Layers and Egg Production**" report.

### **Egg-Type Chicks Hatched Up 3 Percent**

Egg-type chicks **hatched** during February totaled 35.6 million, up 3 percent from February 1998. **Eggs in incubators** totaled 35.3 million on March 1, 1999, up 2 percent from a year ago.

Domestic placements of **egg-type pullet chicks for future hatchery supply flocks** by leading breeders totaled 267,000 during February 1999, up 12 percent from February 1998.

### **Broiler Hatch Up 3 Percent**

The February 1999 **hatch** of broiler-type chicks, at 662 million, was up 3 percent from February of the previous year. There were 624 million **eggs in incubators** on March 1, 1999, up 3 percent from a year earlier.

Leading breeders placed 6.88 million **broiler-type pullet chicks for future domestic hatchery supply flocks** during February 1999, up 10 percent from February 1998.

**All Layers: Average Number on Hand During the Month,  
United States, 1996-99**

Month	1996	1997	1998	1999
	<i>1,000 Layers</i>	<i>1,000 Layers</i>	<i>1,000 Layers</i>	<i>1,000 Layers</i>
Dec <sup>1</sup>	299,345	304,463	311,888	321,193
Jan	299,230	304,289	311,876	322,136
Feb	298,904	304,000	313,245	322,933
Mar	298,853	304,285	314,101	
Apr	297,493	303,618	311,917	
May	295,516	302,241	309,615	
Jun	294,837	300,537	309,166	
Jul	296,290	299,605	308,927	
Aug	297,804	300,211	309,251	
Sep	298,582	303,661	311,278	
Oct	300,052	306,807	314,847	
Nov	302,386	309,670	318,797	

<sup>1</sup> December preceding year.

**Eggs: Production During the Month by Type,  
United States, 1998-99**

Month	Total Eggs		Table Eggs		Hatching Eggs	
	1998	1999	1998	1999	1998	1999
	<i>Million Eggs</i>	<i>Million Eggs</i>	<i>Million Eggs</i>	<i>Million Eggs</i>	<i>Million Eggs</i>	<i>Million Eggs</i>
Dec <sup>1</sup>	6,841	7,029	5,802	5,957	1,039	1,072
Jan	6,766	6,971	5,720	5,890	1,046	1,081
Feb	6,109	6,287	5,150	5,300	959	987
Mar	6,869		5,797		1,072	
Apr	6,603		5,556		1,047	
May	6,665		5,584		1,081	
Jun	6,456		5,433		1,023	
Jul	6,720		5,674		1,046	
Aug	6,694		5,655		1,039	
Sep	6,480		5,480		1,000	
Oct	6,791		5,746		1,045	
Nov	6,723		5,695		1,028	
During Year	79,717	20,287	67,292	17,147	12,425	3,140

<sup>1</sup> December preceding year.

**Layers and Eggs: Layers on Hand and Eggs Produced by Type,  
and Forced Molt, United States, January-February 1998-99<sup>1</sup>**

Item	Unit	1998	1999	1999 as % of 1998
Layers During Jan	1,000			
All Layers		311,876	322,136	103
Table Egg Type		254,945	263,191	103
Hatching Egg Type		56,931	58,945	104
Broiler-Type Hatching		54,387	56,210	103
Egg-Type Hatching		2,544	2,735	108
Eggs per 100 Layers During Jan	Number			
All Layers		2,169	2,164	100
Table Egg Type		2,244	2,238	100
Hatching Egg Type		1,837	1,834	100
Broiler-Type Hatching		1,813	1,806	100
Egg-Type Hatching		2,358	2,413	102
Eggs Produced During Jan	Million			
All Layers		6,766	6,971	103
Table Egg Type		5,720	5,890	103
Hatching Egg Type		1,046	1,081	103
Broiler-Type Hatching		986	1,015	103
Egg-Type Hatching		60	66	110
Layers on Feb 1	1,000			
All Layers		312,111	322,100	103
Table Egg Type		254,724	263,078	103
Hatching Egg Type		57,387	59,022	103
Broiler-Type Hatching		54,794	56,266	103
Egg-Type Hatching		2,593	2,756	106
Eggs per 100 Layers on Feb 1	Number			
All Layers		69.4	69.2	100
Table Egg Type		71.7	71.4	100
Hatching Egg Type		59.1	59.3	100
Broiler-Type Hatching		58.2	58.4	100
Egg-Type Hatching		76.8	76.3	99
Forced Molt Layers on Feb 1	Percent			
Percent Being Molted		5.2	4.9	94
Percent with Molt Completed		21.0	22.1	105

<sup>1</sup> Revised.

**Layers and Eggs: Layers on Hand and Eggs Produced by Type,  
and Forced Molt, United States, February-March 1998-99**

Item	Unit	1998 <sup>1</sup>	1999 <sup>2</sup>	1999 as % of 1998
Layers During Feb	1,000			
All Layers		313,245	322,933	103
Table Egg Type		255,841	263,677	103
Hatching Egg Type		57,404	59,256	103
Broiler-Type Hatching		54,760	56,442	103
Egg-Type Hatching		2,644	2,814	106
Eggs per 100 Layers During Feb	Number			
All Layers		1,950	1,947	100
Table Egg Type		2,013	2,010	100
Hatching Egg Type		1,671	1,666	100
Broiler-Type Hatching		1,647	1,642	100
Egg-Type Hatching		2,156	2,132	99
Eggs Produced During Feb	Million			
All Layers		6,109	6,287	103
Table Egg Type		5,150	5,300	103
Hatching Egg Type		959	987	103
Broiler-Type Hatching		902	927	103
Egg-Type Hatching		57	60	105
Layers on Mar 1	1,000			
All Layers		314,322	323,716	103
Table Egg Type		256,928	264,248	103
Hatching Egg Type		57,394	59,468	104
Broiler-Type Hatching		54,711	56,604	103
Egg-Type Hatching		2,683	2,864	107
Eggs per 100 Layers on Mar 1	Number			
All Layers		69.6	69.7	100
Table Egg Type		71.8	71.9	100
Hatching Egg Type		59.6	59.5	100
Broiler-Type Hatching		58.7	58.7	100
Egg-Type Hatching		78.3	75.1	96
Forced Molt Layers, Mar 1	Percent			
Percent Being Molted		4.4	3.3	75
Percent with Molt Completed		21.2	21.8	103

<sup>1</sup> Revised.

<sup>2</sup> Preliminary.

**Layers and Eggs: Layers on Hand and Eggs Produced by Type, and Forced Molt, January-February, 30 Selected States, 1998-99<sup>1 2</sup>**

Item	Unit	1998	1999	1999 as % of 1998
Layers During Jan	1,000			
All Layers		294,785	304,563	103
Table Egg Type		242,073	249,997	103
Hatching Egg Type		52,712	54,566	104
Broiler-Type Hatching		50,265	51,953	103
Egg-Type Hatching		2,447	2,613	107
Eggs per 100 Layers During Jan	Number			
All Layers		2,172	2,163	100
Table Egg Type		2,245	2,235	100
Hatching Egg Type		1,838	1,834	100
Broiler-Type Hatching		1,812	1,805	100
Egg-Type Hatching		2,370	2,411	102
Eggs Produced During Jan	Million			
All Layers		6,404	6,589	103
Table Egg Type		5,435	5,588	103
Hatching Egg Type		969	1,001	103
Broiler-Type Hatching		911	938	103
Egg-Type Hatching		58	63	109
Layers on Feb 1	1,000			
All Layers		294,956	304,528	103
Table Egg Type		241,833	249,857	103
Hatching Egg Type		53,123	54,671	103
Broiler-Type Hatching		50,627	52,037	103
Egg-Type Hatching		2,496	2,634	106
Eggs per 100 Layers on Feb 1	Number			
All Layers		69.6	69.3	100
Table Egg Type		71.9	71.5	99
Hatching Egg Type		59.2	59.4	100
Broiler-Type Hatching		58.3	58.6	101
Egg-Type Hatching		76.6	76.3	100
Forced Molt Layers on Feb 1	Percent			
Percent Being Molted		5.2	4.8	92
Percent with Molt Completed		21.1	22.1	105
Layers Sold for Slaughter During Jan	1,000	14,971	15,385	103
Layers Rendered, Died, Destroyed, Composted or Disappeared For Any Reason During Jan	1,000	3,265	3,462	106
Pullets Less Than 20 Weeks of Age, Feb 1	1,000	81,006	88,308	109
Pullets Added During Jan <sup>3</sup>	1,000	19,165	19,556	102

<sup>1</sup> The 30 States are listed in the table on page 8.

<sup>2</sup> Revised.

<sup>3</sup> Pullet chicks one day old added to pullet flocks.

**Layers and Eggs: Layers on Hand and Eggs Produced by Type, and Forced Molt, 30 Selected States, February-March, 1998-99<sup>1</sup>**

Item	Unit	1998 <sup>2</sup>	1999 <sup>3</sup>	1999 as % of 1998
Layers During Feb	1,000			
All Layers		295,978	305,306	103
Table Egg Type		242,853	250,492	103
Hatching Egg Type		53,125	54,814	103
Broiler-Type Hatching		50,587	52,120	103
Egg-Type Hatching		2,538	2,694	106
Eggs per 100 Layers During Feb	1,000			
All Layers		1,954	1,948	100
Table Egg Type		2,016	2,009	100
Hatching Egg Type		1,673	1,671	100
Broiler-Type Hatching		1,649	1,648	100
Egg-Type Hatching		2,167	2,116	98
Eggs Produced During Feb	Million			
All Layers		5,784	5,948	103
Table Egg Type		4,895	5,032	103
Hatching Egg Type		889	916	103
Broiler-Type Hatching		834	859	103
Egg-Type Hatching		55	57	104
Layers on Mar 1	1,000			
All Layers		296,954	306,045	103
Table Egg Type		243,849	251,106	103
Hatching Egg Type		53,105	54,939	103
Broiler-Type Hatching		50,536	52,192	103
Egg-Type Hatching		2,569	2,747	107
Eggs per 100 Layers on Mar 1	Number			
All Layers		69.7	69.7	100
Table Egg Type		71.9	71.8	100
Hatching Egg Type		59.7	59.7	100
Broiler-Type Hatching		58.8	58.9	100
Egg-Type Hatching		78.0	75.4	97
Forced Molt Layers, Mar 1	Percent			
Percent Being Molted		4.4	3.3	75
Percent with Molt Completed		21.2	21.5	101
Layers Sold for Slaughter During Feb	1,000	13,855	14,535	105
Layers Rendered, Died, Destroyed, Composted or Disappeared For Any Reason During Feb	1,000	2,892	3,080	106
Pullets Less Than 20 Weeks of Age, Mar 1	1,000	83,462	89,359	107
Pullets Added During Feb <sup>4</sup>	1,000	21,464	20,853	97

<sup>1</sup> The 30 States are listed in the table on page 8.

<sup>2</sup> Revised.

<sup>3</sup> Preliminary.

<sup>4</sup> Pullet chicks one day old added to pullet flocks.

**Layers and Eggs: Layers on Hand and Eggs Produced by State  
and United States, During January 1998-99 <sup>1</sup>**

State	Table Egg Layers in Flocks 30,000 and Above		All Layers <sup>2</sup>		Eggs per 100 for All Layers <sup>2</sup>	
	1998	1999	1998	1999	1998	1999
	<i>1,000</i>	<i>1,000</i>	<i>1,000</i>	<i>1,000</i>	<i>Number</i>	<i>Number</i>
AL	4,026	4,122	10,680	11,067	2,004	1,943
AR	4,520	4,556	15,003	15,048	1,833	1,901
CA	24,808	25,834	25,465	26,606	2,219	2,180
CO	3,023	2,937	3,597	3,478	2,252	2,128
CT	3,275	2,937	3,450	3,120	2,203	2,276
FL	9,765	9,877	10,410	10,622	2,219	2,297
GA	11,351	12,028	20,548	21,540	2,112	2,080
HI	647	587	673	614	2,080	2,068
IL	2,976	2,644	3,263	2,891	2,237	2,179
IN	21,140	21,154	21,822	21,859	2,250	2,246
IA	21,202	24,183	22,058	25,104	2,226	2,175
ME	4,732	4,947	4,833	5,064	2,462	2,468
MD	2,848	3,160	3,334	3,611	2,130	2,354
MI	4,794	5,490	5,058	5,770	2,197	2,203
MN	11,305	11,448	12,010	12,168	2,190	2,153
MS	1,821	1,738	6,882	6,809	1,918	1,997
MO	5,585	5,152	6,947	6,576	2,174	2,205
NE	10,183	10,612	10,333	10,762	2,226	2,146
NY	3,169	3,370	3,369	3,616	2,404	2,406
NC	4,095	3,667	11,456	11,471	1,894	1,944
OH	26,866	29,700	27,483	30,410	2,281	2,243
OK	2,168	2,014	4,056	3,974	1,948	1,963
OR	2,840	2,883	3,028	3,039	2,213	2,264
PA	21,096	21,294	22,415	22,701	2,306	2,335
SC	3,702	3,739	4,731	4,773	2,156	1,948
SD	2,093	1,928	2,288	2,169	2,316	2,305
TX	13,309	13,601	17,116	17,587	2,133	2,098
VA	1,571	1,488	3,583	3,592	1,954	1,893
WA	4,849	4,820	4,977	4,940	2,383	2,356
WI	3,308	3,090	3,917	3,582	2,170	2,289
30 Sts	237,067	245,000	294,785	304,563	2,172	2,163
Oth Sts <sup>3</sup>	11,727	12,134	17,091	17,573	2,118	2,174
US	248,794	257,134	311,876	322,136	2,169	2,164

<sup>1</sup> Revised.

<sup>2</sup> Includes all layers and eggs produced in both table egg and hatching egg flocks regardless of size.

<sup>3</sup> Estimates for individual States are not available.



**Layers and Eggs: Layers on Hand and Eggs Produced by State  
and United States, During February 1998-99 <sup>1</sup>**

State	Table Egg Layers in Flocks 30,000 and Above		All Layers <sup>2</sup>		Eggs per 100 for All Layers <sup>2</sup>	
	1998	1999	1998	1999	1998	1999
	<i>1,000</i>	<i>1,000</i>	<i>1,000</i>	<i>1,000</i>	<i>Number</i>	<i>Number</i>
AL	4,133	3,997	10,838	10,932	1,790	1,793
AR	4,585	4,732	15,199	15,275	1,678	1,709
CA	24,474	25,508	25,131	26,238	1,962	1,963
CO	3,106	2,999	3,678	3,536	1,958	1,867
CT	3,277	2,911	3,449	3,089	2,001	2,072
FL	9,382	10,018	10,017	10,748	1,987	2,103
GA	11,598	12,143	20,844	21,687	1,871	1,872
HI	611	600	638	629	1,887	1,876
IL	2,933	2,527	3,217	2,783	2,060	2,048
IN	21,324	21,364	22,059	22,095	2,004	2,010
IA	21,818	24,175	22,685	25,102	1,984	2,016
ME	4,683	4,827	4,797	4,948	2,230	2,223
MD	2,970	3,176	3,442	3,580	2,034	2,151
MI	4,825	5,613	5,098	5,898	2,010	1,952
MN	11,328	11,493	12,061	12,216	2,015	1,940
MS	1,771	1,853	6,922	6,991	1,748	1,831
MO	5,374	5,155	6,740	6,558	2,003	1,998
NE	10,234	10,694	10,384	10,844	2,013	1,964
NY	3,217	3,472	3,436	3,722	2,183	2,149
NC	3,978	3,634	11,297	11,440	1,717	1,766
OH	27,387	29,919	28,021	30,627	2,031	1,907
OK	2,141	1,987	3,979	3,990	1,709	1,754
OR	2,856	2,807	3,043	2,973	2,070	2,082
PA	20,893	21,376	22,238	22,790	2,082	2,089
SC	3,676	3,872	4,700	4,917	1,957	1,851
SD	2,038	1,928	2,233	2,168	2,156	2,076
TX	13,440	13,357	17,327	17,384	1,899	1,910
VA	1,622	1,531	3,620	3,691	1,796	1,761
WA	4,869	4,805	4,995	4,925	2,112	2,099
WI	3,282	3,026	3,890	3,530	1,954	2,096
30 Sts	237,825	245,499	295,978	305,306	1,954	1,948
Oth Sts <sup>3</sup>	11,846	12,127	17,267	17,627	1,882	1,923
US	249,671	257,626	313,245	322,933	1,950	1,947

<sup>1</sup> 1999 preliminary, 1998 Revised.

<sup>2</sup> Includes all layers and eggs produced in both table egg and hatching egg flocks regardless of size.

<sup>3</sup> Estimates for individual States are not available.

**Egg Production: By Type, State, and United States,  
January 1998-99 <sup>1</sup>**

State	Total Production		Table Eggs <sup>2</sup>		Hatching Eggs <sup>2</sup>	
	1998	1999	1998	1999	1998	1999
	<i>Million Eggs</i>	<i>Million Eggs</i>	<i>Million Eggs</i>	<i>Million Eggs</i>	<i>Million Eggs</i>	<i>Million Eggs</i>
AL	214	215	94	93	120	122
AR	275	286	93	100	182	186
CA	565	580				
CO	81	74				
CT	76	71				
FL	231	244	219	230	12	14
GA	434	448	258	266	176	182
HI	14.0	12.7	14.0	12.7	0	0
IL	73	63	69	59	4	4
IN	491	491	480	479	11	12
IA	491	546				
ME	119	125				
MD	71	85	63	78	8	7
MI	111	127				
MN	263	262	253	252	10	10
MS	132	136	40	42	92	94
MO	151	145				
NE	230	231	230	231	0	0
NY	81	87				
NC	217	223	88	88	129	135
OH	627	682				
OK	79	78	49	46	30	32
OR	67	69	65	68	2	1
PA	517	530	502	513	15	17
SC	102	93	85	79	17	14
SD	53	50	53	50	0	0
TX	365	369				
VA	70	68	36	32	34	36
WA	119	116				
WI	85	82				
30 Sts	6,404	6,589	5,435	5,588	969	1,001
Oth Sts <sup>3</sup>	362	382	285	302	77	80
US	6,766	6,971	5,720	5,890	1,046	1,081

<sup>1</sup> Revised.

<sup>2</sup> Data by type of flock not shown for some States to avoid disclosing individual operations.

<sup>3</sup> Estimates for individual States are not available.

**Egg Production: By Type, State, and United States,  
February 1998-99 <sup>1</sup>**

State	Total Production		Table Eggs <sup>2</sup>		Hatching Eggs <sup>2</sup>	
	1998	1999	1998	1999	1998	1999
	<i>Million Eggs</i>	<i>Million Eggs</i>	<i>Million Eggs</i>	<i>Million Eggs</i>	<i>Million Eggs</i>	<i>Million Eggs</i>
AL	194	196	86	83	108	113
AR	255	261	86	93	169	168
CA	494	515				
CO	72	66				
CT	69	64				
FL	199	226	188	213	11	13
GA	391	406	232	241	159	165
HI	12.0	11.8	12.0	11.8	0	0
IL	67	57	63	53	4	4
IN	443	444	432	433	11	11
IA	450	506				
ME	107	110				
MD	70	77	63	71	7	6
MI	102	115				
MN	243	237	233	227	10	10
MS	121	128	36	41	85	87
MO	135	131				
NE	209	213	209	213	0	0
NY	75	80				
NC	194	202	78	78	116	124
OH	569	584				
OK	68	70	42	41	26	29
OR	64	62	62	61	2	1
PA	463	476	449	460	14	16
SC	94	91	78	76	16	15
SD	48	45	48	45	0	0
TX	329	332				
VA	65	65	33	32	32	33
WA	106	103				
WI	76	74				
30 Sts	5,784	5,948	4,895	5,032	889	916
Oth Sts <sup>3</sup>	325	339	255	268	70	71
US	6,109	6,287	5,150	5,300	959	987

<sup>1</sup> 1999 preliminary, 1998 Revised.

<sup>2</sup> Data by type of flock not shown for some States to avoid disclosing individual operations.

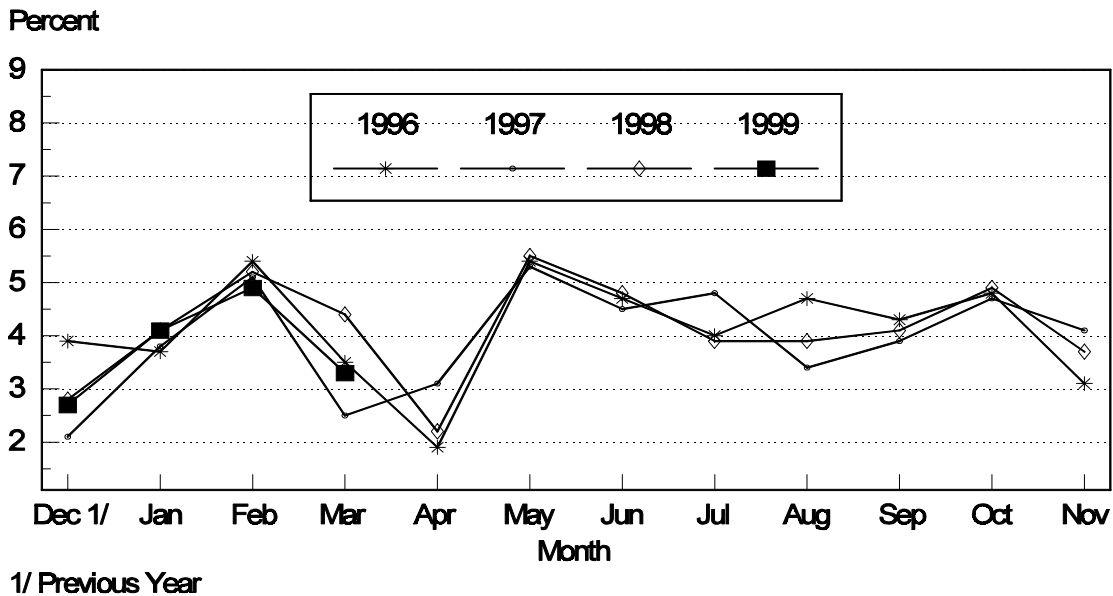
<sup>3</sup> Estimates for individual States are not available.

**Forced Molt: Percent of All Layers by Month,  
United States, 1998-99<sup>1</sup>**

Month	Percent Being Molted		Percent with Molt Completed	
	1998	1999	1998	1999
	<i>Percent</i>	<i>Percent</i>	<i>Percent</i>	<i>Percent</i>
Jan	4.1	4.1	21.8	22.5
Feb	5.2	4.9	21.0	22.1
Mar	4.4	3.3	21.2	21.8
Apr	2.2		22.1	
May	5.5		20.0	
Jun	4.8		21.4	
Jul	3.9		21.6	
Aug	3.9		21.7	
Sep	4.1		21.9	
Oct	4.9		21.9	
Nov	3.7		21.8	
Dec	2.7		23.9	

<sup>1</sup> As of first of month.

**All Layers : United States  
Percent Being Molted, 1996 - 1999  
First of Month**



**Forced Molt: Percent of All Layers by State  
and United States, March 1998-99 <sup>1</sup>**

State	Percent Being Molted		Percent with Molt Completed	
	1998	1999	1998	1999
	<i>Percent</i>	<i>Percent</i>	<i>Percent</i>	<i>Percent</i>
AL	2.0	1.5	9.5	13.0
AR	4.5	1.5	9.5	9.5
CA	10.0	7.5	35.5	36.5
CO	3.5	1.5	15.5	34.5
CT	4.5	0.0	15.0	10.0
FL	7.0	8.5	37.5	32.0
GA	4.0	3.0	18.0	20.0
HI	8.5	10.5	40.5	38.0
IL	0.5	8.5	18.5	17.5
IN	5.0	3.0	22.5	30.0
IA	5.5	3.0	29.5	28.5
ME	0.0	0.0	0.0	1.5
MD	12.0	2.0	44.0	36.5
MI	2.5	2.5	17.5	18.5
MN	4.0	3.0	33.5	35.5
MS	2.0	2.5	8.0	3.0
MO	2.5	3.0	23.0	20.0
NE	8.0	1.0	26.5	15.0
NY	1.0	1.0	3.0	5.5
NC	0.5	1.0	14.5	8.0
OH	3.0	2.0	10.0	16.0
OK	2.0	1.0	12.0	7.0
OR	1.0	3.0	44.5	41.5
PA	4.0	4.5	17.0	17.5
SC	4.5	1.0	33.5	19.0
SD	3.0	2.5	26.5	27.0
TX	4.0	5.5	23.0	17.0
VA	0.0	0.5	7.0	9.0
WA	4.0	8.5	30.5	46.0
WI	5.0	0.0	23.0	27.0
30 Sts	4.4	3.3	21.2	21.5
Oth Sts <sup>2</sup>	3.7	3.6	20.8	27.5
US	4.4	3.3	21.2	21.8

<sup>1</sup> As of first of month.

<sup>2</sup> Estimates for individual States are not available.

**Hatchery Production: Eggs in Incubators, Chicks Hatched,  
and Placements by Type, United States, February-March 1998-99**

Item	1998	1999	1999 as % of 1998
	<i>1,000</i>	<i>1,000</i>	<i>Percent</i>
<b>Egg-Type</b>			
Eggs in Incubators on Mar 1	34,570	35,347	102
Chicks Hatched During Feb	34,573	35,648	103
Chicks Hatched Jan thru Feb	71,807	71,301	99
Pullets Hatched During Feb for Intended Placements in Hatchery Supply Flocks	239	267	112
7-18 Month Earlier <sup>1</sup>	2,764	3,099	112
<b>Broiler-Type</b>			
Eggs in Incubators on Mar 1	608,037	623,749	103
Chicks Hatched During Feb	644,504	661,739	103
Chicks Hatched Jan thru Feb	1,355,080	1,397,087	103
Pullets Hatched During Feb for Intended Placements in Hatchery Supply Flocks	6,263	6,882	110
7-15 Months Earlier <sup>2</sup>	57,494	59,808	104

<sup>1</sup> 1999 includes pullet chicks hatched Aug 1997 through Jul 1998.

<sup>2</sup> 1999 includes pullet chicks hatched Nov 1997 through Jul 1998.

**Egg-Type Eggs in Incubators: By Region and United States,  
March 1, 1998-99**

Geographic Division	1998	1999	1999 as % of 1998
	<i>1,000</i>	<i>1,000</i>	<i>Percent</i>
North Atlantic	5,680	7,021	124
E North Central	8,501	8,197	96
W North Central	7,253	7,032	97
South Atlantic	4,235	3,978	94
South Central	3,718	3,939	106
West	5,183	5,180	100
<b>US</b>	<b>34,570</b>	<b>35,347</b>	<b>102</b>

**Regional Listing:**

North Atlantic = CT, ME, MA, NH, NJ, NY, PA, RI, VT.

E North Central = IL, IN, MI, OH, WI.

W North Central = IA, KS, MN, MO, NE, ND, SD.

South Atlantic = DE, FL, GA, MD, NC, SC, VA, WV.

South Central = AL, AR, KY, LA, MS, OK, TN, TX.

West = AK, AZ, CA, CO, HI, ID, MT, NM, NV, OR, UT, WA, WY.

**Egg-Type Chicks Hatched: By State and United States,  
February 1998-99**

State	February			Jan-Feb		
	1998	1999	1999 as % of 1998	1998	1999	1999 as % of 1998
	<i>1,000</i>	<i>1,000</i>	<i>Percent</i>	<i>1,000</i>	<i>1,000</i>	<i>Percent</i>
AR	1,045	952	91	1,870	1,559	83
FL	1,097	986	90	2,274	2,277	100
GA	1,787	1,984	111	3,929	4,178	106
IN	6,094	6,268	103	13,561	13,327	98
IA	3,678	4,838	132	7,322	8,812	120
KS	193	426	221	323	721	223
MN	1,610	2,057	128	3,545	3,833	108
MO	387	321	83	756	631	83
PA	4,901	5,591	114	10,218	10,593	104
Oth Sts <sup>1</sup>	13,781	12,225	89	28,009	25,370	91
US	34,573	35,648	103	71,807	71,301	99

<sup>1</sup> Not published separately to avoid disclosing data for individual operations.

**Egg-Type Chicks Hatched: By Month, United States, 1997-99**

Month	By Months				Cumulative			
	1997	1998	1999	1999 as % of 1998	1997	1998	1999	1999 as % of 1998
	<i>1,000</i>	<i>1,000</i>	<i>1,000</i>	<i>Percent</i>	<i>1,000</i>	<i>1,000</i>	<i>1,000</i>	<i>Percent</i>
Jan	33,815	37,234	35,653	96	33,815	37,234	35,653	96
Feb	35,762	34,573	35,648	103	69,577	71,807	71,301	99
Mar	37,410	39,986			106,987	111,793		
Apr	38,873	39,926			145,860	151,719		
May	39,078	39,602			184,938	191,321		
Jun	36,861	39,206			221,799	230,527		
Jul	33,838	36,567			255,637	267,094		
Aug	33,125	33,514			288,762	300,608		
Sep	37,181	38,611			325,943	339,219		
Oct	35,328	35,039			361,271	374,258		
Nov	27,846	30,810			389,117	405,068		
Dec	35,890	35,430			425,007	440,498		

**Intended Placements: Egg-Type Pullet Chicks for Hatchery Supply  
Flocks by Month and Total, United States, 1997-99<sup>1</sup>**

Month	Pullet Chicks Hatched			1999 as % of 1998	Cumulative Potential Placements Relative to Current Supply Flocks 7-18 Months Earlier <sup>2</sup>		
	1997	1998	1999		1997	1998	1999
	<i>1,000</i>	<i>1,000</i>	<i>1,000</i>	<i>Percent</i>	<i>1,000</i>	<i>1,000</i>	<i>1,000</i>
Jan	208	189	166	88	2,953	2,823	3,039
Feb	222	239	267	112	2,984	2,764	3,099
Mar	209	225			3,007	2,863	3,004
Apr	316	338			2,946	3,034	2,926
May	273	192			2,870	3,067	3,020
Jun	254	360			2,956	2,986	3,123
Jul	207	267			2,940	2,978	3,091
Aug	285	190			2,929	2,959	3,068
Sep	402	324			2,913	2,976	3,096
Oct	266	360			2,805	2,992	
Nov	129	232			2,869	3,014	
Dec	207	175			2,851	2,933	
Total	2,978	3,091					

<sup>1</sup> Reported by leading breeders. Coverage may not be 100 percent. Includes expected pullet chicks from eggs sold during the preceding month at the rate of 125 pullet chicks per 30 dozen case of eggs.

<sup>2</sup> For February 1999, includes breeder pullet chicks hatched Aug 1997 through Jul 1998. The 7-18 months represent the first laying cycle. Molting and additional laying cycles will increase the cumulative potential placements.

**Broiler-Type Eggs in Incubators: By Region  
and United States, March 1, 1998-99**

Geographic Division	1998	1999	1999 as % of 1998
	<i>1,000</i>	<i>1,000</i>	<i>Percent</i>
North Atlantic	12,250	12,284	100
E North Central	8,963	7,302	81
W North Central	22,827	22,791	100
South Atlantic	230,190	239,001	104
South Central	311,216	317,469	102
West	22,591	24,902	110
US	608,037	623,749	103



**Broiler-Type Chicks Hatched: By State  
and United States, February 1998-99**

State	February			Jan-Feb		
	1998	1999	1999 as % of 1998	1998	1999	1999 as % of 1998
	<i>1,000</i>	<i>1,000</i>	<i>Percent</i>	<i>1,000</i>	<i>1,000</i>	<i>Percent</i>
AL	82,239	87,409	106	173,266	184,679	107
AR	95,896	97,638	102	202,789	205,835	102
DE	14,329	13,660	95	30,001	29,235	97
FL	8,902	8,738	98	18,446	18,634	101
GA	95,569	100,054	105	204,090	212,642	104
MD	27,576	27,908	101	58,713	58,964	100
MS	57,204	58,341	102	120,082	124,004	103
NC	54,133	56,808	105	114,181	119,270	104
PA	11,615	11,618	100	24,411	24,743	101
SC	13,227	14,233	108	28,001	30,656	109
TX	41,325	43,312	105	87,062	91,698	105
VA	21,063	21,611	103	44,517	45,399	102
CA TN & WV	34,072	34,873	102	71,748	74,238	103
15 Sts <sup>1</sup>	557,150	576,203	103	1,177,307	1,219,997	104
Oth Sts <sup>2</sup>	87,354	85,536	98	177,773	177,090	100
US	644,504	661,739	103	1,355,080	1,397,087	103

<sup>1</sup> States in the weekly hatchery production estimating program.

<sup>2</sup> Not published separately to avoid disclosing data for individual operations.

**Broiler Chicks Hatched: By Month, United States, 1997-99**

Month	By Months				Cumulative			
	1997	1998	1999	1999 as % of 1998	1997	1998	1999	1999 as % of 1998
	<i>1,000</i>	<i>1,000</i>	<i>1,000</i>	<i>Percent</i>	<i>1,000</i>	<i>1,000</i>	<i>1,000</i>	<i>Percent</i>
Jan	700,021	710,576	735,348	103	700,021	710,576	735,348	103
Feb	634,253	644,504	661,739	103	1,334,274	1,355,080	1,397,087	103
Mar	718,899	731,998			2,053,173	2,087,078		
Apr	693,746	709,360			2,746,919	2,796,438		
May	724,735	739,952			3,471,654	3,536,390		
Jun	704,129	718,983			4,175,783	4,255,373		
Jul	710,699	723,352			4,886,482	4,978,725		
Aug	708,637	713,211			5,595,119	5,691,936		
Sep	684,204	692,859			6,279,323	6,384,795		
Oct	683,113	692,913			6,962,436	7,077,708		
Nov	648,088	673,907			7,610,524	7,751,615		
Dec	711,972	733,797			8,322,496	8,485,412		

**Intended Placements: Broiler-Type Pullet Chicks for Hatchery  
Supply Flocks by Month and Total, 1997-99 <sup>1</sup>**

Month	Pullet Chicks Hatched			1999 as % of 1998	Cumulative Potential Placements Relative to Current Supply Flocks 7-15 Months Earlier <sup>2</sup>		
	1997	1998	1999		1997	1998	1999
	<i>1,000</i>	<i>1,000</i>	<i>1,000</i>	<i>Percent</i>	<i>1,000</i>	<i>1,000</i>	<i>1,000</i>
US Place- ments							
Jan	6,397	6,794	7,059	104	56,101	56,552	59,331
Feb	5,916	6,263	6,882	110	56,122	57,494	59,808
Mar	6,443	6,776			55,981	57,677	60,537
Apr	6,036	6,687			55,933	58,228	61,598
May	7,062	7,062			56,667	58,085	62,228
Jun	6,008	6,896			57,264	58,516	63,271
Jul	7,167	6,731			57,115	58,325	63,759
Aug	6,697	7,076			56,761	59,083	64,131
Sep	6,502	7,313			55,897	58,284	63,951
Oct	6,254	7,424			56,165	59,052	
Nov	6,347	7,306			56,167	58,572	
Dec	6,252	7,264			56,714	58,937	
Annual Total	77,081	83,592					
Total Place- ments <sup>3</sup>							
Jan	7,545	8,812	8,679	98			
Feb	7,122	8,207	8,473	103			
Mar	7,894	8,760					
Apr	7,238	8,299					
May	8,505	8,957					
Jun	7,381	8,845					
Jul	8,460	8,318					
Aug	8,132	8,466					
Sep	8,092	9,035					
Oct	8,145	9,297					
Nov	7,973	9,406					
Dec	8,237	9,190					
Annual Total	94,724	105,592					

<sup>1</sup> Reported by leading breeders. Coverage may not be 100 percent. Includes expected pullet chicks from eggs sold during the preceding month at the rate of 125 pullet chicks per 30 dozen case of eggs.

<sup>2</sup> For Feb 1999, includes breeder pullet chicks hatched Nov 1997 through Jul 1998.

<sup>3</sup> U.S. production of intended placements worldwide.

## Procedures and Reliability

**Data Sources:** Primary data for the "**Chickens and Eggs**" report are from weekly and/or monthly questionnaires sent to producers. An attempt is made to collect information for layer and egg estimates from each known contractor and independent producer who has over 30,000 table egg layers. Coverage for operations with less than 30,000 table egg layers are estimated each month based on data reported in December. Approximately 900 contractors, independent egg producers, and started pullet operations are contacted each month. All known hatcheries, approximately 360, are contacted for information on a weekly and/or monthly basis.

**Revisions:** The previous month's estimates are subject to revision if late reports or corrected data indicates a different level. Additionally, revisions needed after the monthly report will be made at the end of the marketing year and published in the annual summaries of "**Layers and Egg Production**" and "**Hatchery Production**".

**Procedures and Reliability:** Operations are mailed a questionnaire and given adequate time to respond by mail. Those that do not respond are phoned. Great care is exercised to ensure that all operations are accounted for during each survey period. However, there are usually missing reports that must be accounted for in the estimates.

Sound statistical methodology is employed to derive estimates from the reported data. All data are checked for unusual values. All operations' data are compared to their own past operating profiles and also to trends from other operations. Data for missing operations are estimated based on similar operations or historical data. Survey data are subject to non-sampling errors such as omissions and mistakes in reporting and in processing. While these errors cannot be measured directly, they are minimized by reviewing all data for consistency and reasonableness.

Egg-type chicks hatched are comprised of all chicks of egg-type domesticated breeds including males and chicks destined for hatchery supply flocks and research purposes. The relationship of chicks hatched to chicken inventory and poultry marketings is carefully monitored. The disposition of egg-type chicks hatched prior to placement into the laying flock can vary significantly, which can make comparisons to changes in layer inventory inconsistent over time.

Intended placement data reported by leading breeders include pullet chicks expected from eggs sold the preceding month. The breeders in this report account for a large percentage of replacement pullets for hatchery supply flocks. Production of replacement pullets by these breeders indicates the number of pullets available to hatchery egg supply flocks several months before the pullets will actually move into the flocks. Beginning with the January 1996 publication the broiler-type cumulative potential placements went from 7-14 months earlier to 7-15 months earlier. The egg-type cumulative potential placements of 7-18 months represent the first laying cycle. Molting and additional laying cycles will increase the cumulative potential placements of egg-type hatching flocks.

The next "Chickens and Eggs" report will be released at 3 p.m. ET on April 23, 1999.

The United States Department of Agriculture (USDA) prohibits discrimination in all its programs on the basis of race, color, national origin, gender, religion, age, disability, political beliefs, sexual orientation, and marital or family status. (Not all prohibited bases apply to all programs.) Persons with disabilities who require alternative means for communication of program information (braille, large print, audiotape, etc.) should contact the USDA's TARGET Center at 202-720-2600 (voice and TDD).

To file a complaint of discrimination, write USDA, Director, Office of Civil Rights, Room 326-W, Whitten Building, 14th and Independence Avenue, SW, Washington, D.C., 20250-9410, or call 202-720-5964 (voice or TDD). USDA is an equal opportunity provider and employer.

## **ACCESS TO REPORTS!!**

---

For your convenience, there are several ways to obtain NASS reports, data products, and services:

### **INTERNET ACCESS**

All NASS reports are available free of charge on the worldwide Internet. For access, connect to the Internet and go to the NASS Home Page at: <http://www.usda.gov/nass/>. Select "Today's Reports" or Publications and then Reports by Calendar or Publications and then Search, by Title or Subject.

### **E-MAIL SUBSCRIPTION**

All NASS reports are available by subscription free of charge direct to your e-mail address. Send an e-mail message to: [usda-reports@usda.mannlib.cornell.edu](mailto:usda-reports@usda.mannlib.cornell.edu). In the body of the message type the word: **list**.

### **AUTOFAX ACCESS**

NASSFax service is available for some reports from your fax machine. Please call 202-720-2000, using the handset attached to your fax. Respond to the voice prompts. Document 0411 is a list of available reports.

-----

### **PRINTED REPORTS OR DATA PRODUCTS**

**CALL OUR TOLL-FREE ORDER DESK: 800-999-6779 (U.S. and Canada)**  
Other areas, please call 703-834-0125      FAX: 703-834-0110  
(Visa, MasterCard, check, or money order acceptable for payment.)

-----

### **ASSISTANCE**

For **assistance** with general agricultural statistics or further information about NASS or its products or services, contact the **Agricultural Statistics Hotline** at **800-727-9540**, 7:30 a.m. to 4:00 p.m. ET, or e-mail: [nass@nass.usda.gov](mailto:nass@nass.usda.gov).