

# Chickens and Eggs



USDA  
Washington, D.C.

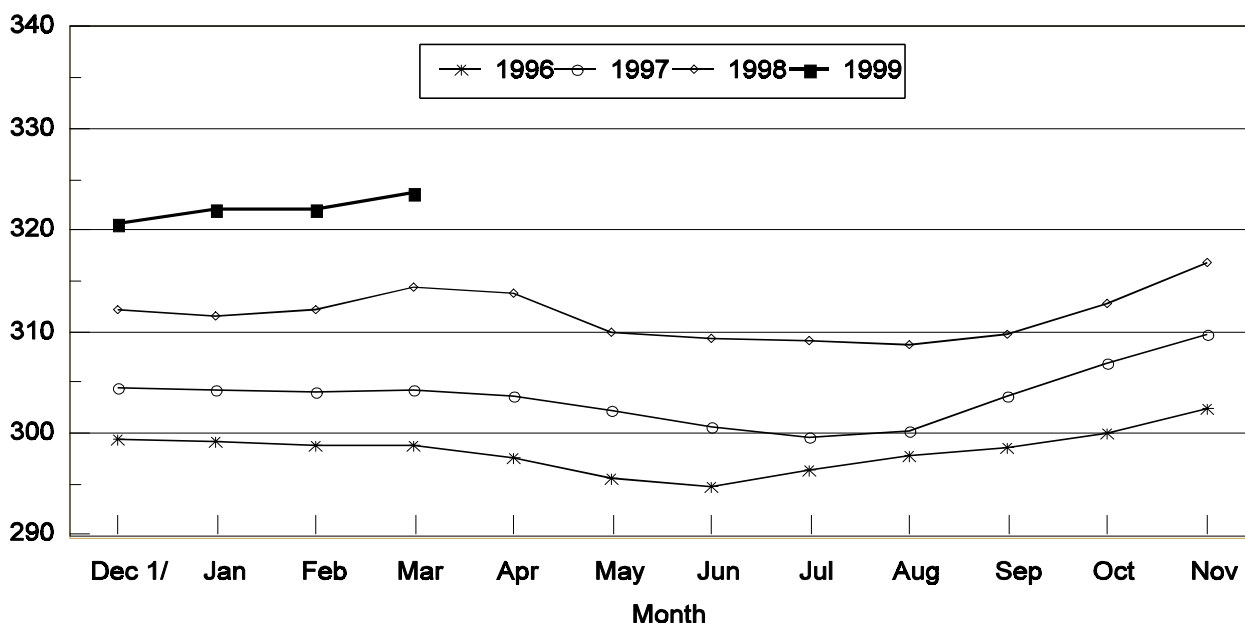
Released April 23, 1999, by the National Agricultural Statistics Service (NASS), Agricultural Statistics Board, U.S. Department of Agriculture. For information on "Chickens and Eggs" call Dan Boostrom at (202) 720-3244. For information on "Hatch" call Tom Kruchten at (202) 690-4870, office hours 7:30 a.m. to 4:00 p.m. ET.

## March Egg Production Up 3 Percent

U.S. egg production totaled 7.05 billion during March 1999, up 3 percent from the 6.87 billion produced in 1998. Production included 5.94 billion table eggs and 1.11 billion hatching eggs, of which 1.04 billion were broiler-type and 70.0 million were egg-type. The total number of layers during March 1999 averaged 323 million, up 3 percent from the total average number of layers during March 1998. March egg production per 100 layers was 2,183 eggs, down slightly from 2,187 eggs in March 1998.

## Average Number of All Layers United States , 1996 - 1999

Million Layers



1/ Previous Year

All layers in the U.S. on April 1, 1999, totaled 323 million, up 3 percent from a year ago. The 323 million layers consisted of 262 million layers producing table or commercial type eggs, 57.3 million layers producing broiler-type hatching eggs, and 2.94 million layers producing egg-type hatching eggs. Rate of lay per day on April 1, 1999, averaged 71.1 eggs per 100 layers, down fractionally from the 71.3 a year ago.

Laying flocks in the 30 major egg producing States produced 6.66 billion eggs during March, up 2 percent from March 1998. The average number of layers during March, at 305 million, was up 3 percent from a year earlier.

Individual State estimates are available for the 30 major egg producing States. These States are listed on page 8 of this release and account for approximately 95 percent of the total U.S. egg production. Production for the other States are grouped into an "Other States" category and combined with the 30 States published individually to obtain a U.S. estimate. Individual State estimates' for "Other States" are available annually in the "**Layers and Egg Production**" report.

### **Egg-Type Chicks Hatched Up 2 Percent**

Egg-type chicks **hatched** during March totaled 41.3 million, up 2 percent from March 1998. **Eggs in incubators** totaled 38.0 million on April 1, 1999, up 12 percent from a year ago.

Domestic placements of **egg-type pullet chicks for future hatchery supply flocks** by leading breeders totaled 257,000 during March 1999, up 14 percent from March 1998.

### **Broiler Hatch Up 3 Percent**

The March 1999 **hatch** of broiler-type chicks, at 755 million, was up 3 percent from March of the previous year. There were 626 million **eggs in incubators** on April 1, 1999, up 3 percent from a year earlier.

Leading breeders placed 7.20 million **broiler-type pullet chicks for future domestic hatchery supply flocks** during March 1999, up 6 percent from March 1998.

**All Layers: Average Number on Hand During the Month,  
United States, 1996-99**

Month	1996	1997	1998	1999
	<i>1,000 Layers</i>	<i>1,000 Layers</i>	<i>1,000 Layers</i>	<i>1,000 Layers</i>
Dec <sup>1</sup>	299,345	304,463	311,888	321,193
Jan	299,230	304,289	311,876	322,136
Feb	298,904	304,000	313,245	322,754
Mar	298,853	304,285	314,101	323,027
Apr	297,493	303,618	311,917	
May	295,516	302,241	309,615	
Jun	294,837	300,537	309,166	
Jul	296,290	299,605	308,927	
Aug	297,804	300,211	309,251	
Sep	298,582	303,661	311,278	
Oct	300,052	306,807	314,847	
Nov	302,386	309,670	318,797	

<sup>1</sup> December preceding year.

**Eggs: Production During the Month by Type,  
United States, 1998-99**

Month	Total Eggs		Table Eggs		Hatching Eggs	
	1998	1999	1998	1999	1998	1999
	<i>Million Eggs</i>	<i>Million Eggs</i>	<i>Million Eggs</i>	<i>Million Eggs</i>	<i>Million Eggs</i>	<i>Million Eggs</i>
Dec <sup>1</sup>	6,841	7,029	5,802	5,957	1,039	1,072
Jan	6,766	6,971	5,720	5,890	1,046	1,081
Feb	6,109	6,282	5,150	5,296	959	986
Mar	6,869	7,052	5,797	5,943	1,072	1,109
Apr	6,603		5,556		1,047	
May	6,665		5,584		1,081	
Jun	6,456		5,433		1,023	
Jul	6,720		5,674		1,046	
Aug	6,694		5,655		1,039	
Sep	6,480		5,480		1,000	
Oct	6,791		5,746		1,045	
Nov	6,723		5,695		1,028	
During Year	79,717	27,334	67,292	23,086	12,425	4,248

<sup>1</sup> December preceding year.

**Layers and Eggs: Layers on Hand and Eggs Produced by Type,  
and Forced Molt, United States, February-March 1998-99 <sup>1</sup>**

Item	Unit	1998	1999	1999 as % of 1998
Layers During Feb	1,000			
All Layers		313,245	322,754	103
Table Egg Type		255,841	263,473	103
Hatching Egg Type		57,404	59,281	103
Broiler-Type Hatching		54,760	56,467	103
Egg-Type Hatching		2,644	2,814	106
Eggs per 100 Layers During Feb	Number			
All Layers		1,950	1,946	100
Table Egg Type		2,013	2,010	100
Hatching Egg Type		1,671	1,663	100
Broiler-Type Hatching		1,647	1,640	100
Egg-Type Hatching		2,156	2,132	99
Eggs Produced During Feb	Million			
All Layers		6,109	6,282	103
Table Egg Type		5,150	5,296	103
Hatching Egg Type		959	986	103
Broiler-Type Hatching		902	926	103
Egg-Type Hatching		57	60	105
Layers on Mar 1	1,000			
All Layers		314,322	323,357	103
Table Egg Type		256,928	263,840	103
Hatching Egg Type		57,394	59,517	104
Broiler-Type Hatching		54,711	56,653	104
Egg-Type Hatching		2,683	2,864	107
Eggs per 100 Layers on Mar 1	Number			
All Layers		69.6	69.6	100
Table Egg Type		71.8	71.9	100
Hatching Egg Type		59.6	59.4	100
Broiler-Type Hatching		58.7	58.6	100
Egg-Type Hatching		78.3	75.1	96
Forced Molt Layers on Mar 1	Percent			
Percent Being Molted		4.4	3.3	75
Percent with Molt Completed		21.2	21.8	103
Layers Sold for Slaughter During Feb	1,000	14,468	14,906	103
Layers Rendered, Died, Destroyed, Composted or Disappeared For Any Reason During Feb	1,000	3,077	3,255	106
Pullets Less Than 20 Weeks of Age, Mar 1	1,000	88,604	94,924	107
Pullets Added During Feb <sup>2</sup>	1,000	22,580	21,641	96

<sup>1</sup> Revised.

<sup>2</sup> Pullet chicks one day old added to pullet flocks.

**Layers and Eggs: Layers on Hand and Eggs Produced by Type,  
and Forced Molt, United States, March-April 1998-99**

Item	Unit	1998 <sup>1</sup>	1999	1999 as % of 1998
Layers During Mar	1,000			
All Layers		314,101	323,027	103
Table Egg Type		256,570	263,125	103
Hatching Egg Type		57,531	59,902	104
Broiler-Type Hatching		54,854	56,997	104
Egg-Type Hatching		2,677	2,905	109
Eggs per 100 Layers During Mar	Number			
All Layers		2,187	2,183	100
Table Egg Type		2,259	2,259	100
Hatching Egg Type		1,863	1,851	99
Broiler-Type Hatching		1,836	1,823	99
Egg-Type Hatching		2,428	2,410	99
Eggs Produced During Mar	Million			
All Layers		6,869	7,052	103
Table Egg Type		5,797	5,943	103
Hatching Egg Type		1,072	1,109	103
Broiler-Type Hatching		1,007	1,039	103
Egg-Type Hatching		65	70	108
Layers on Apr 1	1,000			
All Layers		313,833	322,655	103
Table Egg Type		256,185	262,392	102
Hatching Egg Type		57,648	60,263	105
Broiler-Type Hatching		54,987	57,326	104
Egg-Type Hatching		2,661	2,937	110
Eggs per 100 Layers on Apr 1	Number			
All Layers		71.3	71.1	100
Table Egg Type		73.8	73.7	100
Hatching Egg Type		60.0	59.7	100
Broiler-Type Hatching		59.2	58.7	99
Egg-Type Hatching		78.0	77.8	100
Forced Molt Layers, Apr 1	Percent			
Percent Being Molted		2.2	2.8	127
Percent with Molt Completed		22.1	21.2	96
Layers Sold for Slaughter During Mar	1,000	16,652	16,006	96
Layers Rendered, Died, Destroyed. Composted or Disappeared For Any Reason During Mar	1,000	3,310	3,661	111
Pullets Less Than 20 Weeks of Age, Apr 1	1,000	88,552	95,276	108
Pullets Added During Mar <sup>2</sup>	1,000	20,788	21,043	101

<sup>1</sup> Revised.

<sup>2</sup> Pullet chicks one day old added to pullet flocks.

**Layers and Eggs: Layers on Hand and Eggs Produced by Type, and Forced  
Molt, February-March, 30 Selected States, 1998-99<sup>1 2</sup>**

Item	Unit	1998	1999	1999 as % of 1998
Layers During Feb	1,000			
All Layers		295,978	305,127	103
Table Egg Type		242,853	250,288	103
Hatching Egg Type		53,125	54,839	103
Broiler-Type Hatching		50,587	52,145	103
Egg-Type Hatching		2,538	2,694	106
Eggs per 100 Layers During Feb	Number			
All Layers		1,954	1,948	100
Table Egg Type		2,016	2,009	100
Hatching Egg Type		1,673	1,669	100
Broiler-Type Hatching		1,649	1,645	100
Egg-Type Hatching		2,167	2,116	98
Eggs Produced During Feb	Million			
All Layers		5,784	5,943	103
Table Egg Type		4,895	5,028	103
Hatching Egg Type		889	915	103
Broiler-Type Hatching		834	858	103
Egg-Type Hatching		55	57	104
Layers on Mar 1	1,000			
All Layers		296,954	305,686	103
Table Egg Type		243,849	250,698	103
Hatching Egg Type		53,105	54,988	104
Broiler-Type Hatching		50,536	52,241	103
Egg-Type Hatching		2,569	2,747	107
Eggs per 100 Layers on Mar 1	Number			
All Layers		69.7	69.6	100
Table Egg Type		71.9	71.8	100
Hatching Egg Type		59.7	59.6	100
Broiler-Type Hatching		58.8	58.8	100
Egg-Type Hatching		78.0	75.4	97
Forced Molt Layers on Mar 1	Percent			
Percent Being Molted		4.4	3.3	75
Percent with Molt Completed		21.2	21.4	101
Layers Sold for Slaughter During Feb	1,000	13,855	14,312	103
Layers Rendered, Died, Destroyed, Composted or Disappeared For Any Reason During Feb	1,000	2,892	3,122	108
Pullets Less Than 20 Weeks of Age, Mar 1	1,000	83,462	89,464	107
Pullets Added During Feb <sup>3</sup>	1,000	21,464	20,902	97

<sup>1</sup> The 30 States are listed in the table on page 8.

<sup>2</sup> Revised.

<sup>3</sup> Pullet chicks one day old added to pullet flocks.

**Layers and Eggs: Layers on Hand and Eggs Produced by Type, and Forced  
Molt, 30 Selected States, March-April, 1998-99 <sup>1</sup>**

Item	Unit	1998 <sup>2</sup>	1999	1999 as % of 1998
Layers During Mar	1,000			
All Layers		296,894	305,134	103
Table Egg Type		243,673	249,787	103
Hatching Egg Type		53,221	55,347	104
Broiler-Type Hatching		50,659	52,561	104
Egg-Type Hatching		2,562	2,786	109
Eggs per 100 Layers During Mar	1,000			
All Layers		2,189	2,183	100
Table Egg Type		2,260	2,256	100
Hatching Egg Type		1,866	1,854	99
Broiler-Type Hatching		1,838	1,825	99
Egg-Type Hatching		2,420	2,405	99
Eggs Produced During Mar	Million			
All Layers		6,499	6,661	102
Table Egg Type		5,506	5,635	102
Hatching Egg Type		993	1,026	103
Broiler-Type Hatching		931	959	103
Egg-Type Hatching		62	67	108
Layers on Apr 1	1,000			
All Layers		296,804	304,550	103
Table Egg Type		243,481	248,863	102
Hatching Egg Type		53,323	55,687	104
Broiler-Type Hatching		50,776	52,869	104
Egg-Type Hatching		2,547	2,818	111
Eggs per 100 Layers on Apr 1	Number			
All Layers		71.4	71.1	100
Table Egg Type		73.8	73.6	100
Hatching Egg Type		60.2	59.7	99
Broiler-Type Hatching		59.3	58.8	99
Egg-Type Hatching		78.4	77.9	99
Forced Molt Layers, Apr 1	Percent			
Percent Being Molted		2.3	2.9	126
Percent with Molt Completed		22.1	21.0	95
Layers Sold for Slaughter During Mar	1,000	15,598	15,364	99
Layers Rendered, Died, Destroyed, Composted or Disappeared For Any Reason During Mar	1,000	3,175	3,514	111
Pullets Less Than 20 Weeks of Age, Apr 1	1,000	83,235	90,122	108
Pullets Added During Mar <sup>3</sup>	1,000	19,782	20,329	103

<sup>1</sup> The 30 States are listed in the table on page 8.

<sup>2</sup> Revised.

<sup>3</sup> Pullet chicks one day old added to pullet flocks.

**Layers and Eggs: Layers on Hand and Eggs Produced by State  
and United States, During February 1998-99**

State	Table Egg Layers in Flocks 30,000 and Above		All Layers <sup>1</sup>		Eggs per 100 for All Layers <sup>1</sup>	
	1998	1999 <sup>2</sup>	1998	1999 <sup>2</sup>	1998	1999 <sup>2</sup>
	<i>1,000</i>	<i>1,000</i>	<i>1,000</i>	<i>1,000</i>	<i>Number</i>	<i>Number</i>
AL	4,133	4,004	10,838	10,947	1,790	1,781
AR	4,585	4,732	15,199	15,275	1,678	1,709
CA	24,474	25,508	25,131	26,238	1,962	1,963
CO	3,106	2,999	3,678	3,536	1,958	1,867
CT	3,277	2,911	3,449	3,089	2,001	2,072
FL	9,382	10,213	10,017	10,960	1,987	2,099
GA	11,598	12,143	20,844	21,687	1,871	1,872
HI	611	600	638	629	1,887	1,876
IL	2,933	2,527	3,217	2,783	2,060	2,048
IN	21,324	21,364	22,059	22,095	2,004	2,010
IA	21,818	23,769	22,685	24,696	1,984	2,017
ME	4,683	4,827	4,797	4,948	2,230	2,223
MD	2,970	3,176	3,442	3,580	2,034	2,151
MI	4,825	5,613	5,098	5,898	2,010	1,952
MN	11,328	11,493	12,061	12,216	2,015	1,940
MS	1,771	1,853	6,922	6,991	1,748	1,831
MO	5,374	5,155	6,740	6,558	2,003	1,998
NE	10,234	10,694	10,384	10,844	2,013	1,964
NY	3,217	3,472	3,436	3,722	2,183	2,149
NC	3,978	3,634	11,297	11,440	1,717	1,766
OH	27,387	29,919	28,021	30,627	2,031	1,907
OK	2,141	1,987	3,979	3,990	1,709	1,754
OR	2,856	2,807	3,043	2,973	2,070	2,082
PA	20,893	21,376	22,238	22,790	2,082	2,089
SC	3,676	3,872	4,700	4,917	1,957	1,851
SD	2,038	1,928	2,233	2,168	2,156	2,076
TX	13,440	13,357	17,327	17,384	1,899	1,910
VA	1,622	1,531	3,620	3,691	1,796	1,761
WA	4,869	4,805	4,995	4,925	2,112	2,099
WI	3,282	3,026	3,890	3,530	1,954	2,096
30 Sts	237,825	245,295	295,978	305,127	1,954	1,948
Oth Sts <sup>3</sup>	11,846	12,127	17,267	17,627	1,882	1,923
US	249,671	257,422	313,245	322,754	1,950	1,946

<sup>1</sup> Includes all layers and eggs produced in both table egg and hatching egg flocks regardless of size.

<sup>2</sup> Revised.

<sup>3</sup> Estimates for individual States are not available.



**Layers and Eggs: Layers on Hand and Eggs Produced by State  
and United States, During March 1998-99**

State	Table Egg Layers in Flocks 30,000 and Above		All Layers <sup>1</sup>		Eggs per 100 for All Layers <sup>1</sup>	
	1998	1999	1998	1999	1998	1999
	<i>1,000</i>	<i>1,000</i>	<i>1,000</i>	<i>1,000</i>	<i>Number</i>	<i>Number</i>
AL	4,184	3,924	10,939	10,886	1,975	1,984
AR	4,631	4,721	15,084	15,281	1,903	1,924
CA	24,589	25,448	25,280	26,122	2,215	2,205
CO	3,164	2,944	3,769	3,485	2,149	2,123
CT	3,234	2,887	3,400	3,066	2,324	2,316
FL	9,359	10,554	9,990	11,281	2,142	2,260
GA	11,808	11,580	21,199	21,226	2,142	2,129
HI	616	612	642	641	2,025	2,075
IL	3,009	2,539	3,292	2,830	2,339	2,261
IN	21,092	21,384	21,800	22,148	2,239	2,230
IA	22,177	23,713	23,038	24,665	2,192	2,287
ME	4,589	4,706	4,717	4,827	2,438	2,486
MD	2,932	3,128	3,330	3,485	2,372	2,324
MI	5,009	5,640	5,282	5,923	2,276	2,181
MN	11,220	11,483	11,995	12,208	2,276	2,146
MS	1,723	1,751	6,790	6,941	2,003	2,046
MO	5,294	5,189	6,688	6,612	2,243	2,238
NE	10,325	10,744	10,475	10,894	2,186	2,185
NY	3,297	3,457	3,529	3,724	2,380	2,390
NC	3,946	3,742	11,210	11,633	1,945	1,951
OH	27,497	30,094	28,135	30,805	2,278	2,204
OK	2,108	1,956	3,977	4,104	1,936	1,974
OR	2,809	2,779	2,985	2,950	2,412	2,271
PA	20,898	21,376	22,248	22,790	2,319	2,326
SC	3,707	3,832	4,752	4,866	2,189	2,076
SD	2,053	1,913	2,251	2,153	2,355	2,276
TX	13,432	13,422	17,374	17,483	2,187	2,162
VA	1,609	1,474	3,663	3,680	1,966	1,984
WA	4,949	4,695	5,072	4,815	2,317	2,334
WI	3,373	3,125	3,988	3,610	2,207	2,244
30 Sts	238,633	244,812	296,894	305,134	2,189	2,183
Oth Sts <sup>2</sup>	11,758	12,281	17,207	17,893	2,150	2,185
US	250,391	257,093	314,101	323,027	2,187	2,183

<sup>1</sup> Includes all layers and eggs produced in both table egg and hatching egg flocks regardless of size.

<sup>2</sup> Estimates for individual States are not available.

**Egg Production: By Type, State, and United States,  
February 1998-99**

State	Total Production		Table Eggs <sup>1</sup>		Hatching Eggs <sup>1</sup>	
	1998	1999 <sup>2</sup>	1998	1999 <sup>2</sup>	1998	1999 <sup>2</sup>
	<i>Million Eggs</i>	<i>Million Eggs</i>	<i>Million Eggs</i>	<i>Million Eggs</i>	<i>Million Eggs</i>	<i>Million Eggs</i>
AL	194	195	86	83	108	112
AR	255	261	86	93	169	168
CA	494	515				
CO	72	66				
CT	69	64				
FL	199	230	188	217	11	13
GA	391	406	232	241	159	165
HI	12.0	11.8	12.0	11.8	0	0
IL	67	57	63	53	4	4
IN	443	444	432	433	11	11
IA	450	498				
ME	107	110				
MD	70	77	63	71	7	6
MI	102	115				
MN	243	237	233	227	10	10
MS	121	128	36	41	85	87
MO	135	131				
NE	209	213	209	213	0	0
NY	75	80				
NC	194	202	78	78	116	124
OH	569	584				
OK	68	70	42	41	26	29
OR	64	62	62	61	2	1
PA	463	476	449	460	14	16
SC	94	91	78	76	16	15
SD	48	45	48	45	0	0
TX	329	332				
VA	65	65	33	32	32	33
WA	106	103				
WI	76	74				
30 Sts	5,784	5,943	4,895	5,028	889	915
Oth Sts <sup>3</sup>	325	339	255	268	70	71
US	6,109	6,282	5,150	5,296	959	986

<sup>1</sup> Data by type of flock not shown for some States to avoid disclosing individual operations.

<sup>2</sup> Revised.

<sup>3</sup> Estimates for individual States are not available.

**Egg Production: By Type, State, and United States,  
March 1998-99**

State	Total Production		Table Eggs <sup>1</sup>		Hatching Eggs <sup>1</sup>	
	1998	1999	1998	1999	1998	1999
	<i>Million Eggs</i>	<i>Million Eggs</i>	<i>Million Eggs</i>	<i>Million Eggs</i>	<i>Million Eggs</i>	<i>Million Eggs</i>
AL	216	216	96	91	120	125
AR	287	294	101	105	186	189
CA	560	576				
CO	81	74				
CT	79	71				
FL	214	255	202	242	12	13
GA	454	452	273	268	181	184
HI	13.0	13.3	13.0	13.3	0	0
IL	77	64	73	60	4	4
IN	488	494	476	482	12	12
IA	505	564				
ME	115	120				
MD	79	81	72	76	7	5
MI	120	129				
MN	273	262	261	251	12	11
MS	136	142	41	44	95	98
MO	150	148				
NE	229	238	229	238	0	0
NY	84	89				
NC	218	227	89	88	129	139
OH	641	679				
OK	77	81	47	46	30	35
OR	72	67	70	66	2	1
PA	516	530	500	513	16	17
SC	104	101	86	83	18	18
SD	53	49	53	49	0	0
TX	380	378				
VA	72	73	35	36	37	37
WA	118	112				
WI	88	81				
30 Sts	6,499	6,661	5,506	5,635	993	1,026
Oth Sts <sup>2</sup>	370	391	291	308	79	83
US	6,869	7,052	5,797	5,943	1,072	1,109

<sup>1</sup> Data by type of flock not shown for some States to avoid disclosing individual operations.

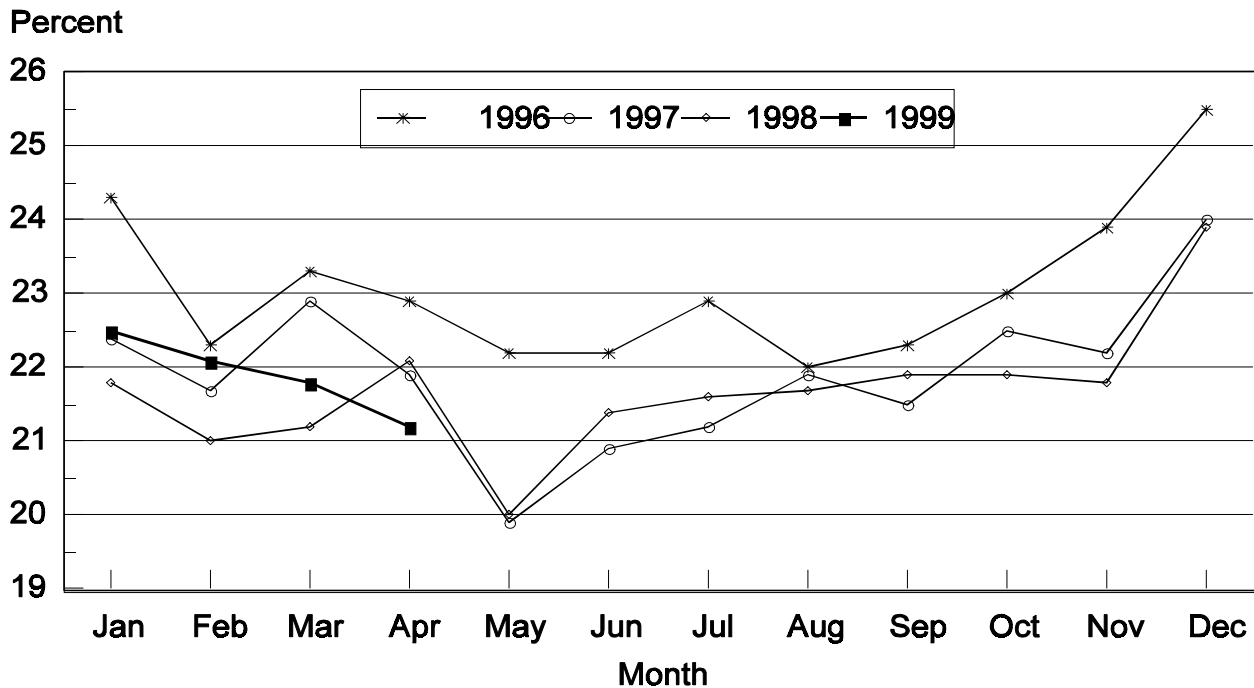
<sup>2</sup> Estimates for individual States are not available.

**Forced Molt: Percent of All Layers by Month,  
United States, 1998-99<sup>1</sup>**

Month	Percent Being Molted		Percent with Molt Completed	
	1998	1999	1998	1999
	<i>Percent</i>	<i>Percent</i>	<i>Percent</i>	<i>Percent</i>
Jan	4.1	4.1	21.8	22.5
Feb	5.2	4.9	21.0	22.1
Mar	4.4	3.3	21.2	21.8
Apr	2.2	2.8	22.1	21.2
May	5.5		20.0	
Jun	4.8		21.4	
Jul	3.9		21.6	
Aug	3.9		21.7	
Sep	4.1		21.9	
Oct	4.9		21.9	
Nov	3.7		21.8	
Dec	2.7		23.9	

<sup>1</sup> As of first of month.

**All Layers: United States  
Percent Molt Completed, 1996 - 1999  
First of Month**



**Forced Molt: Percent of All Layers by State  
and United States, April 1998-99 <sup>1</sup>**

State	Percent Being Molted		Percent with Molt Completed	
	1998	1999	1998	1999
	<i>Percent</i>	<i>Percent</i>	<i>Percent</i>	<i>Percent</i>
AL	1.0	0.5	10.5	13.0
AR	3.0	2.5	10.0	9.5
CA	3.5	5.0	37.0	37.5
CO	3.0	4.5	16.0	34.0
CT	2.0	0.0	12.0	9.5
FL	2.5	6.5	39.5	18.0
GA	1.0	2.5	16.5	17.0
HI	7.0	3.5	43.5	39.0
IL	0.5	3.5	19.5	22.5
IN	0.5	2.5	25.0	31.0
IA	3.5	4.5	38.0	27.5
ME	0.0	0.0	0.0	1.5
MD	0.0	0.0	45.0	36.0
MI	2.0	0.5	16.5	22.0
MN	3.5	2.0	31.0	34.5
MS	0.5	4.0	10.0	6.0
MO	0.0	0.0	22.0	19.5
NE	5.5	6.0	25.0	18.0
NY	1.0	0.0	2.0	4.5
NC	1.0	0.5	12.0	8.5
OH	0.5	1.5	12.0	15.0
OK	1.0	1.0	12.5	6.5
OR	3.5	7.5	41.5	42.0
PA	3.5	4.0	17.0	17.5
SC	0.0	2.5	32.0	19.0
SD	3.0	3.5	25.0	27.5
TX	4.0	0.5	23.0	17.5
VA	8.0	5.0	7.0	1.5
WA	4.0	4.0	29.0	47.0
WI	3.0	7.5	21.0	27.0
30 Sts	2.3	2.9	22.1	21.0
Oth Sts <sup>2</sup>	0.4	1.3	22.3	24.6
US	2.2	2.8	22.1	21.2

<sup>1</sup> As of first of month.

<sup>2</sup> Estimates for individual States are not available.

**Hatchery Production: Eggs in Incubators, Chicks Hatched,  
and Placements by Type, United States, March-April 1998-99**

Item	1998	1999	1999 as % of 1998
	<i>1,000</i>	<i>1,000</i>	<i>Percent</i>
Egg-Type			
Eggs in Incubators on Apr 1	33,944	37,970	112
Chicks Hatched During Mar	40,590	41,325	102
Chicks Hatched Jan thru Mar	112,342	112,626	100
Pullets Hatched During Mar for Intended			
Placements in Hatchery Supply Flocks	225	257	114
7-18 Month Earlier <sup>1</sup>	2,863	3,020	105
Broiler-Type			
Eggs in Incubators on Apr 1	606,668	626,019	103
Chicks Hatched During Mar	730,316	755,179	103
Chicks Hatched Jan thru Mar	2,086,869	2,152,266	103
Pullets Hatched During Mar for Intended			
Placements in Hatchery Supply Flocks	6,776	7,195	106
7-15 Months Earlier <sup>2</sup>	57,677	60,699	105

<sup>1</sup> 1999 includes pullet chicks hatched Sep 1997 through Aug 1998.

<sup>2</sup> 1999 includes pullet chicks hatched Dec 1997 through Aug 1998.

**Egg-Type Eggs in Incubators: By Region and United States,  
April 1, 1998-99**

Geographic Division	1998	1999	1999 as % of 1998
	<i>1,000</i>	<i>1,000</i>	<i>Percent</i>
North Atlantic	5,461	6,945	127
E North Central	9,180	9,586	104
W North Central	6,267	7,336	117
South Atlantic	4,733	4,724	100
South Central	4,055	3,705	91
West	4,248	5,674	134
US	33,944	37,970	112

**Regional Listing:**

North Atlantic = CT, ME, MA, NH, NJ, NY, PA, RI, VT.

E North Central = IL, IN, MI, OH, WI.

W North Central = IA, KS, MN, MO, NE, ND, SD.

South Atlantic = DE, FL, GA, MD, NC, SC, VA, WV.

South Central = AL, AR, KY, LA, MS, OK, TN, TX.

West = AK, AZ, CA, CO, HI, ID, MT, NM, NV, OR, UT, WA, WY.

**Egg-Type Chicks Hatched: By State and United States,  
March 1998-99**

State	March			Jan-Mar		
	1998	1999	1999 as % of 1998	1998	1999	1999 as % of 1998
	<i>1,000</i>	<i>1,000</i>	<i>Percent</i>	<i>1,000</i>	<i>1,000</i>	<i>Percent</i>
AR	882	749	85	2,752	2,308	84
FL	1,004	1,067	106	3,278	3,344	102
GA	2,283	1,821	80	6,212	5,999	97
IN	7,303	7,531	103	20,864	20,858	100
IA	5,773	5,542	96	12,874	14,354	111
KS	306	166	54	629	887	141
MN	1,715	2,213	129	5,260	6,046	115
MO	381	381	100	1,012	1,012	100
PA	5,647	6,110	108	15,865	16,703	105
Oth Sts <sup>1</sup>	15,296	15,745	103	43,596	41,115	94
US	40,590	41,325	102	112,342	112,626	100

<sup>1</sup> Not published separately to avoid disclosing data for individual operations.

**Egg-Type Chicks Hatched: By Month, United States, 1997-99**

Month	By Months				Cumulative			
	1997	1998	1999	1999 as % of 1998	1997	1998	1999	1999 as % of 1998
	<i>1,000</i>	<i>1,000</i>	<i>1,000</i>	<i>Percent</i>	<i>1,000</i>	<i>1,000</i>	<i>1,000</i>	<i>Percent</i>
Jan	33,752	37,159	35,653	96	33,752	37,159	35,653	96
Feb	35,655	34,593	35,648	103	69,407	71,752	71,301	99
Mar	37,347	40,590	41,325	102	106,754	112,342	112,626	100
Apr	38,842	39,043			145,596	151,385		
May	39,020	39,192			184,616	190,577		
Jun	36,796	39,302			221,412	229,879		
Jul	33,772	35,558			255,184	265,437		
Aug	33,061	33,380			288,245	298,817		
Sep	37,118	37,943			325,363	336,760		
Oct	35,262	34,649			360,625	371,409		
Nov	28,122	31,251			388,747	402,660		
Dec	35,796	35,733			424,543	438,393		

**Intended Placements: Egg-Type Pullet Chicks for Hatchery Supply  
Flocks by Month and Total, United States, 1997-99<sup>1</sup>**

Month	Pullet Chicks Hatched			1999 as % of 1998	Cumulative Potential Placements Relative to Current Supply Flocks 7-18 Months Earlier <sup>2</sup>		
	1997	1998	1999		1997	1998	1999
	<i>1,000</i>	<i>1,000</i>	<i>1,000</i>	<i>Percent</i>	<i>1,000</i>	<i>1,000</i>	<i>1,000</i>
Jan	208	189	166	88	2,953	2,823	3,029
Feb	222	250	267	107	2,984	2,764	3,120
Mar	209	225	257	114	3,007	2,863	3,020
Apr	316	333			2,946	3,034	2,942
May	273	192			2,870	3,057	3,044
Jun	254	354			2,956	2,976	3,132
Jul	207	298			2,940	2,968	3,108
Aug	285	185			2,929	2,949	3,085
Sep	402	324			2,913	2,977	3,102
Oct	256	358			2,805	2,993	3,134
Nov	129	217			2,869	3,010	
Dec	207	183			2,851	2,929	
Total	2,968	3,108					

<sup>1</sup> Reported by leading breeders. Coverage may not be 100 percent. Includes expected pullet chicks from eggs sold during the preceding month at the rate of 125 pullet chicks per 30 dozen case of eggs.

<sup>2</sup> For March 1999, includes breeder pullet chicks hatched Sep 1997 through Aug 1998. The 7-18 months represent the first laying cycle. Molting and additional laying cycles will increase the cumulative potential placements.

**Broiler-Type Eggs in Incubators: By Region  
and United States, April 1, 1998-99**

Geographic Division	1998	1999	1999 as % of 1998
	<i>1,000</i>	<i>1,000</i>	<i>Percent</i>
North Atlantic	12,112	12,005	99
E North Central	7,880	8,134	103
W North Central	22,689	22,199	98
South Atlantic	230,885	240,300	104
South Central	309,239	318,094	103
West	23,863	25,287	106
US	606,668	626,019	103



**Broiler-Type Chicks Hatched: By State  
and United States, March 1998-99**

State	March			Jan-Mar		
	1998	1999	1999 as % of 1998	1998	1999	1999 as % of 1998
	<i>1,000</i>	<i>1,000</i>	<i>Percent</i>	<i>1,000</i>	<i>1,000</i>	<i>Percent</i>
AL	93,160	97,138	104	266,426	281,817	106
AR	108,407	112,380	104	311,196	318,215	102
DE	16,865	16,908	100	46,866	46,143	98
FL	10,016	10,587	106	28,462	29,221	103
GA	107,784	114,245	106	311,877	326,887	105
MD	32,067	31,915	100	90,780	90,879	100
MS	64,959	65,866	101	185,041	189,870	103
NC	64,196	64,375	100	178,377	183,645	103
PA	13,227	13,525	102	37,741	38,268	101
SC	15,069	16,617	110	43,101	47,273	110
TX	47,026	49,605	105	134,077	141,303	105
VA	24,366	24,826	102	68,883	70,225	102
CA TN & WV	39,648	41,831	106	111,529	116,069	104
15 Sts <sup>1</sup>	636,790	659,818	104	1,814,356	1,879,815	104
Oth Sts <sup>2</sup>	93,526	95,361	102	272,513	272,451	100
US	730,316	755,179	103	2,086,869	2,152,266	103

<sup>1</sup> States in the weekly hatchery production estimating program.

<sup>2</sup> Not published separately to avoid disclosing data for individual operations.

**Broiler Chicks Hatched: By Month, United States, 1997-99**

Month	By Months				Cumulative			
	1997	1998	1999	1999 as % of 1998	1997	1998	1999	1999 as % of 1998
	<i>1,000</i>	<i>1,000</i>	<i>1,000</i>	<i>Percent</i>	<i>1,000</i>	<i>1,000</i>	<i>1,000</i>	<i>Percent</i>
Jan	699,952	711,373	735,348	103	699,952	711,373	735,348	103
Feb	634,142	645,180	661,739	103	1,334,094	1,356,553	1,397,087	103
Mar	718,413	730,316	755,179	103	2,052,507	2,086,869	2,152,266	103
Apr	693,717	708,260			2,746,224	2,795,129		
May	724,679	739,319			3,470,903	3,534,448		
Jun	704,247	717,967			4,175,150	4,252,415		
Jul	710,622	722,715			4,885,772	4,975,130		
Aug	708,572	715,650			5,594,344	5,690,780		
Sep	684,156	695,281			6,278,500	6,386,061		
Oct	683,185	693,189			6,961,685	7,079,250		
Nov	648,141	678,003			7,609,826	7,757,253		
Dec	711,808	737,840			8,321,634	8,495,093		

**Intended Placements: Broiler-Type Pullet Chicks for Hatchery  
Supply Flocks by Month and Total, 1997-99 <sup>1</sup>**

Month	Pullet Chicks Hatched			1999 as % of 1998	Cumulative Potential Placements Relative to Current Supply Flocks 7-15 Months Earlier <sup>2</sup>		
	1997	1998	1999		1997	1998	1999
	<i>1,000</i>	<i>1,000</i>	<i>1,000</i>	<i>Percent</i>	<i>1,000</i>	<i>1,000</i>	<i>1,000</i>
US Place- ments							
Jan	6,397	6,765	7,059	104	56,101	56,552	59,403
Feb	5,916	6,328	6,882	109	56,122	57,494	59,937
Mar	6,443	6,776	7,195	106	55,981	57,677	60,699
Apr	6,036	6,687			55,933	58,228	61,775
May	7,062	7,062			56,667	58,085	61,893
Jun	6,008	6,932			57,264	58,516	62,877
Jul	7,167	6,788			57,115	58,325	63,005
Aug	6,697	7,109			56,761	59,054	63,377
Sep	6,502	7,328			55,897	58,320	63,197
Oct	6,254	6,883			56,165	59,088	63,460
Nov	6,347	7,312			56,167	58,608	
Dec	6,252	6,904			56,714	58,973	
Annual Total	77,081	82,874					
Total Place- ments <sup>3</sup>							
Jan	7,547	8,613	8,679	101			
Feb	7,122	8,273	8,473	102			
Mar	7,894	8,760	8,863	101			
Apr	7,238	8,300					
May	8,505	8,957					
Jun	7,381	8,757					
Jul	8,460	8,423					
Aug	8,132	8,686					
Sep	8,092	8,985					
Oct	8,142	8,756					
Nov	7,973	9,412					
Dec	8,237	8,830					
Annual Total	94,723	104,752					

<sup>1</sup> Reported by leading breeders. Coverage may not be 100 percent. Includes expected pullet chicks from eggs sold during the preceding month at the rate of 125 pullet chicks per 30 dozen case of eggs.

<sup>2</sup> For Mar 1999, includes breeder pullet chicks hatched Dec 1997 through Aug 1998.

<sup>3</sup> U.S. production of intended placements worldwide.

## Procedures and Reliability

**Data Sources:** Primary data for the "**Chickens and Eggs**" report are from weekly and/or monthly questionnaires sent to producers. An attempt is made to collect information for layer and egg estimates from each known contractor and independent producer who has over 30,000 table egg layers. Coverage for operations with less than 30,000 table egg layers are estimated each month based on data reported in December. Approximately 900 contractors, independent egg producers, and started pullet operations are contacted each month. All known hatcheries, approximately 360, are contacted for information on a weekly and/or monthly basis.

**Revisions:** The previous month's estimates are subject to revision if late reports or corrected data indicates a different level. Additionally, revisions needed after the monthly report will be made at the end of the marketing year and published in the annual summaries of "**Layers and Egg Production**" and "**Hatchery Production**".

**Procedures and Reliability:** Operations are mailed a questionnaire and given adequate time to respond by mail. Those that do not respond are phoned. Great care is exercised to ensure that all operations are accounted for during each survey period. However, there are usually missing reports that must be accounted for in the estimates.

Sound statistical methodology is employed to derive estimates from the reported data. All data are checked for unusual values. All operations' data are compared to their own past operating profiles and also to trends from other operations. Data for missing operations are estimated based on similar operations or historical data. Survey data are subject to non-sampling errors such as omissions and mistakes in reporting and in processing. While these errors cannot be measured directly, they are minimized by reviewing all data for consistency and reasonableness.

Egg-type chicks hatched are comprised of all chicks of egg-type domesticated breeds including males and chicks destined for hatchery supply flocks and research purposes. The relationship of chicks hatched to chicken inventory and poultry marketings is carefully monitored. The disposition of egg-type chicks hatched prior to placement into the laying flock can vary significantly, which can make comparisons to changes in layer inventory inconsistent over time.

Intended placement data reported by leading breeders include pullet chicks expected from eggs sold the preceding month. The breeders in this report account for a large percentage of replacement pullets for hatchery supply flocks. Production of replacement pullets by these breeders indicates the number of pullets available to hatchery egg supply flocks several months before the pullets will actually move into the flocks. Beginning with the January 1996 publication the broiler-type cumulative potential placements went from 7-14 months earlier to 7-15 months earlier. The egg-type cumulative potential placements of 7-18 months represent the first laying cycle. Molting and additional laying cycles will increase the cumulative potential placements of egg-type hatching flocks.

The next "Chickens and Eggs" report will be released at 3 p.m. ET on May 24, 1999.

The United States Department of Agriculture (USDA) prohibits discrimination in all its programs on the basis of race, color, national origin, gender, religion, age, disability, political beliefs, sexual orientation, and marital or family status. (Not all prohibited bases apply to all programs.) Persons with disabilities who require alternative means for communication of program information (braille, large print, audiotape, etc.) should contact the USDA's TARGET Center at 202-720-2600 (voice and TDD).

To file a complaint of discrimination, write USDA, Director, Office of Civil Rights, Room 326-W, Whitten Building, 14th and Independence Avenue, SW, Washington, D.C., 20250-9410, or call 202-720-5964 (voice or TDD). USDA is an equal opportunity provider and employer.

## **ACCESS TO REPORTS!!**

---

For your convenience, there are several ways to obtain NASS reports, data products, and services:

### **INTERNET ACCESS**

All NASS reports are available free of charge on the worldwide Internet. For access, connect to the Internet and go to the NASS Home Page at: <http://www.usda.gov/nass/>. Select "Today's Reports" or Publications and then Reports by Calendar or Publications and then Search, by Title or Subject.

### **E-MAIL SUBSCRIPTION**

All NASS reports are available by subscription free of charge direct to your e-mail address. Send an e-mail message to: [usda-reports@usda.mannlib.cornell.edu](mailto:usda-reports@usda.mannlib.cornell.edu). In the body of the message type the word: **list**.

### **AUTOFAX ACCESS**

NASSFax service is available for some reports from your fax machine. Please call 202-720-2000, using the handset attached to your fax. Respond to the voice prompts. Document 0411 is a list of available reports.

### **----- PRINTED REPORTS OR DATA PRODUCTS**

**CALL OUR TOLL-FREE ORDER DESK: 800-999-6779 (U.S. and Canada)**  
**Other areas, please call 703-834-0125      FAX: 703-834-0110**  
**(Visa, MasterCard, check, or money order acceptable for payment.)**  
**-----**

### **ASSISTANCE**

For **assistance** with general agricultural statistics or further information about NASS or its products or services, contact the **Agricultural Statistics Hotline** at **800-727-9540**, 7:30 a.m. to 4:00 p.m. ET, or e-mail: [nass@nass.usda.gov](mailto:nass@nass.usda.gov).