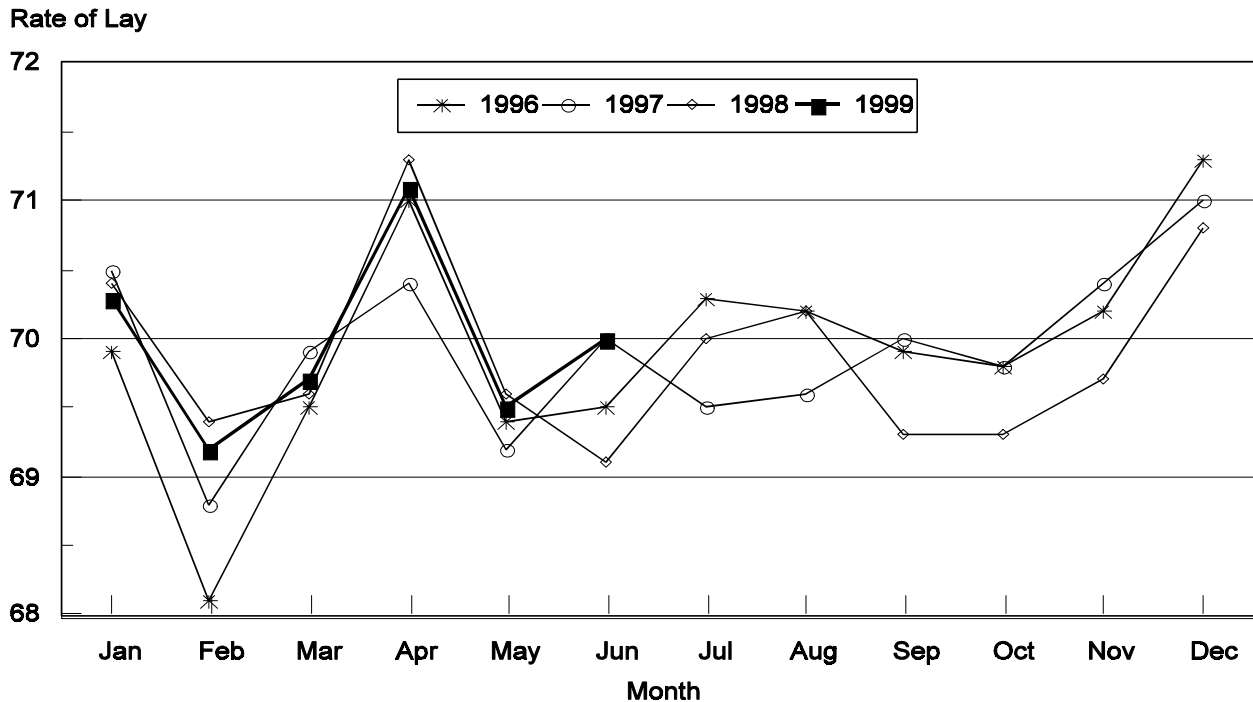


Released June 22, 1999, by the National Agricultural Statistics Service (NASS), Agricultural Statistics Board, U.S. Department of Agriculture. For information on "Chickens and Eggs" call Dan Boostrom at (202) 720-3244, office hours 7:30 a.m. to 4:00 p.m. ET.

## May Egg Production Up 4 Percent

U.S. egg production totaled 6.92 billion during May 1999, up 4 percent from the 6.67 billion produced in 1998. Production included 5.81 billion table eggs and 1.12 billion hatching eggs, of which 1.05 billion were broiler-type and 69.0 million were egg-type. The total number of layers during May 1999 averaged 320 million, up 3 percent from the total average number of layers during May 1998. May egg production per 100 layers was 2,164 eggs, up 1 percent from 2,153 eggs in May 1998.

## All Layers: 1st of Month Rate of Lay United States, 1996 - 1999 Eggs Per 100 Layers



All layers in the U.S. on June 1, 1999, totaled 320 million, up 3 percent from a year ago. The 320 million layers consisted of 260 million layers producing table or commercial type eggs, 56.8 million layers producing broiler-type hatching eggs, and 2.87 million layers producing egg-type hatching eggs. Rate of lay per day on June 1, 1999, averaged 70.0 eggs per 100 layers, up 1 percent from the 69.1 a year ago.

Laying flocks in the 30 major egg producing States produced 6.54 billion eggs during May, up 4 percent from May 1998. The average number of layers during May, at 302 million, was up 3 percent from a year earlier.

Individual State estimates are available for the 30 major egg producing States. These States are listed on page 8 of this release and account for approximately 95 percent of the total U.S. egg production. Production for the other States are grouped into an "Other States" category and combined with the 30 States published individually to obtain a U.S. estimate. Individual State estimates' for "Other States" are available annually in the "**Layers and Egg Production**" report.

### **Egg-Type Chicks Hatched Up 4 Percent**

Egg-type chicks **hatched** during May totaled 40.6 million, up 4 percent from May 1998. **Eggs in incubators** totaled 37.3 million on June 1, 1999, up 1 percent from a year ago.

Domestic placements of **egg-type pullet chicks for future hatchery supply flocks** by leading breeders totaled 283,000 during May 1999, up 47 percent from May 1998.

### **Broiler Hatch Up 4 Percent**

The May 1999 **hatch** of broiler-type chicks, at 766 million, was up 4 percent from May of the previous year. There were 636 million **eggs in incubators** on June 1, 1999, up 4 percent from a year earlier.

Leading breeders placed 7.74 million **broiler-type pullet chicks for future domestic hatchery supply flocks** during May 1999, up 10 percent from May 1998.

**All Layers: Average Number on Hand During the Month,  
United States, 1996-99**

Month	1996	1997	1998	1999
	<i>1,000 Layers</i>	<i>1,000 Layers</i>	<i>1,000 Layers</i>	<i>1,000 Layers</i>
Dec <sup>1</sup>	299,345	304,463	311,888	321,193
Jan	299,230	304,289	311,876	322,136
Feb	298,904	304,000	313,245	322,754
Mar	298,853	304,285	314,101	322,516
Apr	297,493	303,618	311,917	320,917
May	295,516	302,241	309,615	319,872
Jun	294,837	300,537	309,166	
Jul	296,290	299,605	308,927	
Aug	297,804	300,211	309,251	
Sep	298,582	303,661	311,278	
Oct	300,052	306,807	314,847	
Nov	302,386	309,670	318,797	

<sup>1</sup> December preceding year.

**Eggs: Production During the Month by Type,  
United States, 1998-99**

Month	Total Eggs		Table Eggs		Hatching Eggs	
	1998	1999	1998	1999	1998	1999
	<i>Million Eggs</i>	<i>Million Eggs</i>	<i>Million Eggs</i>	<i>Million Eggs</i>	<i>Million Eggs</i>	<i>Million Eggs</i>
Dec <sup>1</sup>	6,841	7,029	5,802	5,957	1,039	1,072
Jan	6,766	6,971	5,720	5,890	1,046	1,081
Feb	6,109	6,282	5,150	5,296	959	986
Mar	6,869	7,043	5,797	5,934	1,072	1,109
Apr	6,603	6,769	5,556	5,693	1,047	1,076
May	6,665	6,922	5,584	5,805	1,081	1,117
Jun	6,456		5,433		1,023	
Jul	6,720		5,674		1,046	
Aug	6,694		5,655		1,039	
Sep	6,480		5,480		1,000	
Oct	6,791		5,746		1,045	
Nov	6,723		5,695		1,028	
During Year	79,717	41,016	67,292	34,575	12,425	6,441

<sup>1</sup> December preceding year.

**Layers and Eggs: Layers on Hand and Eggs Produced by Type,  
and Forced Molt, United States, April-May 1998-99 <sup>1</sup>**

Item	Unit	1998	1999	1999 as % of 1998
Layers During Apr	1,000			
All Layers		311,917	320,917	103
Table Egg Type		254,002	260,998	103
Hatching Egg Type		57,915	59,919	103
Broiler-Type Hatching		55,258	57,060	103
Egg-Type Hatching		2,657	2,859	108
Eggs per 100 Layers During Apr	Number			
All Layers		2,117	2,109	100
Table Egg Type		2,187	2,181	100
Hatching Egg Type		1,808	1,796	99
Broiler-Type Hatching		1,781	1,768	99
Egg-Type Hatching		2,371	2,343	99
Eggs Produced During Apr	Million			
All Layers		6,603	6,769	103
Table Egg Type		5,556	5,693	102
Hatching Egg Type		1,047	1,076	103
Broiler-Type Hatching		984	1,009	103
Egg-Type Hatching		63	67	106
Layers on May 1	1,000			
All Layers		309,945	320,149	103
Table Egg Type		251,793	260,612	104
Hatching Egg Type		58,152	59,537	102
Broiler-Type Hatching		55,514	56,766	102
Egg-Type Hatching		2,638	2,771	105
Eggs per 100 Layers on May 1	Number			
All Layers		69.6	69.5	100
Table Egg Type		71.8	71.7	100
Hatching Egg Type		60.0	59.8	100
Broiler-Type Hatching		59.1	58.9	100
Egg-Type Hatching		79.4	78.3	99
Forced Molt Layers on May 1	Percent			
Percent Being Molted		5.5	5.6	102
Percent with Molt Completed		20.0	21.8	109
Layers Sold for Slaughter During Apr	1,000	18,150	18,206	100
Layers Rendered, Died, Destroyed, Composted or Disappeared For Any Reason During Apr	1,000	4,341	4,080	94
Pullets Less Than 20 Weeks of Age, May 1	1,000	91,037	97,851	107
Pullets Added During Apr <sup>2</sup>	1,000	21,917	24,060	110

<sup>1</sup> Revised.

<sup>2</sup> Pullet chicks one day old added to pullet flocks.

**Layers and Eggs: Layers on Hand and Eggs Produced by Type,  
and Forced Molt, United States, May-June 1998-99**

Item	Unit	1998 <sup>1</sup>	1999	1999 as % of 1998
Layers During May	1,000			
All Layers		309,615	319,872	103
Table Egg Type		251,737	260,274	103
Hatching Egg Type		57,878	59,598	103
Broiler-Type Hatching		55,237	56,775	103
Egg-Type Hatching		2,641	2,823	107
Eggs per 100 Layers During May	Number			
All Layers		2,153	2,164	101
Table Egg Type		2,218	2,230	101
Hatching Egg Type		1,868	1,874	100
Broiler-Type Hatching		1,839	1,846	100
Egg-Type Hatching		2,461	2,444	99
Eggs Produced During May	Million			
All Layers		6,665	6,922	104
Table Egg Type		5,584	5,805	104
Hatching Egg Type		1,081	1,117	103
Broiler-Type Hatching		1,016	1,048	103
Egg-Type Hatching		65	69	106
Layers on Jun 1	1,000			
All Layers		309,235	319,552	103
Table Egg Type		251,656	259,915	103
Hatching Egg Type		57,579	59,637	104
Broiler-Type Hatching		54,947	56,768	103
Egg-Type Hatching		2,632	2,869	109
Eggs per 100 Layers on Jun 1	Number			
All Layers		69.1	70.0	101
Table Egg Type		71.2	72.2	101
Hatching Egg Type		60.0	60.6	101
Broiler-Type Hatching		59.2	59.7	101
Egg-Type Hatching		77.7	78.2	101
Forced Molt Layers, Jun 1	Percent			
Percent Being Molted		4.8	5.1	106
Percent with Molt Completed		21.4	22.2	104
Layers Sold for Slaughter During May	1,000	16,945	17,299	102
Layers Rendered, Died, Destroyed, Composted or Disappeared For Any Reason During May	1,000	4,755	3,800	80
Pullets Less Than 20 Weeks of Age, Jun 1	1,000	93,816	98,618	105
Pullets Added During May <sup>2</sup>	1,000	23,717	22,613	95

<sup>1</sup> Revised.

<sup>2</sup> Pullet chicks one day old added to pullet flocks.

**Layers and Eggs: Layers on Hand and Eggs Produced by Type, and Forced  
Molt, April-May, 30 Selected States, 1998-99<sup>1 2</sup>**

Item	Unit	1998	1999	1999 as % of 1998
Layers During Apr	1,000			
All Layers		294,694	303,070	103
Table Egg Type		241,172	247,700	103
Hatching Egg Type		53,522	55,370	103
Broiler-Type Hatching		50,980	52,629	103
Egg-Type Hatching		2,542	2,741	108
Eggs per 100 Layers During Apr	Number			
All Layers		2,119	2,111	100
Table Egg Type		2,188	2,182	100
Hatching Egg Type		1,807	1,797	99
Broiler-Type Hatching		1,779	1,769	99
Egg-Type Hatching		2,360	2,335	99
Eggs Produced During Apr	Million			
All Layers		6,244	6,399	102
Table Egg Type		5,277	5,404	102
Hatching Egg Type		967	995	103
Broiler-Type Hatching		907	931	103
Egg-Type Hatching		60	64	107
Layers on May 1	1,000			
All Layers		292,538	302,579	103
Table Egg Type		238,844	247,557	104
Hatching Egg Type		53,694	55,022	102
Broiler-Type Hatching		51,172	52,367	102
Egg-Type Hatching		2,522	2,655	105
Eggs per 100 Layers on May 1	Number			
All Layers		69.7	69.6	100
Table Egg Type		72.0	71.7	100
Hatching Egg Type		59.9	59.9	100
Broiler-Type Hatching		59.0	59.0	100
Egg-Type Hatching		79.4	78.4	99
Forced Molt Layers on May 1	Percent			
Percent Being Molted		5.5	5.5	100
Percent with Molt Completed		20.1	21.8	108
Layers Sold for Slaughter During Apr	1,000	17,497	17,174	98
Layers Rendered, Died, Destroyed, Composted or Disappeared For Any Reason During Apr	1,000	4,155	3,929	95
Pullets Less Than 20 Weeks of Age, May 1	1,000	85,806	92,516	108
Pullets Added During Apr <sup>3</sup>	1,000	20,953	23,145	110

<sup>1</sup> The 30 States are listed in the table on page 8.

<sup>2</sup> Revised.

<sup>3</sup> Pullet chicks one day old added to pullet flocks.

**Layers and Eggs: Layers on Hand and Eggs Produced by Type, and Forced  
Molt, 30 Selected States, May-June, 1998-99 <sup>1</sup>**

Item	Unit	1998 <sup>2</sup>	1999	1999 as % of 1998
Layers During May	1,000			
All Layers		292,037	302,207	103
Table Egg Type		238,528	247,130	104
Hatching Egg Type		53,509	55,077	103
Broiler-Type Hatching		50,978	52,367	103
Egg-Type Hatching		2,531	2,710	107
Eggs per 100 Layers During May	1,000			
All Layers		2,156	2,165	100
Table Egg Type		2,221	2,230	100
Hatching Egg Type		1,867	1,874	100
Broiler-Type Hatching		1,838	1,845	100
Egg-Type Hatching		2,450	2,435	99
Eggs Produced During May	Million			
All Layers		6,297	6,544	104
Table Egg Type		5,298	5,512	104
Hatching Egg Type		999	1,032	103
Broiler-Type Hatching		937	966	103
Egg-Type Hatching		62	66	106
Layers on Jun 1	1,000			
All Layers		291,496	301,805	104
Table Egg Type		238,193	246,690	104
Hatching Egg Type		53,303	55,115	103
Broiler-Type Hatching		50,774	52,355	103
Egg-Type Hatching		2,529	2,760	109
Eggs per 100 Layers on Jun 1	Number			
All Layers		69.2	70.0	101
Table Egg Type		71.3	72.1	101
Hatching Egg Type		60.1	60.5	101
Broiler-Type Hatching		59.2	59.6	101
Egg-Type Hatching		77.4	78.1	101
Forced Molt Layers, Jun 1	Percent			
Percent Being Molted		4.7	5.1	109
Percent with Molt Completed		21.5	22.3	104
Layers Sold for Slaughter During May	1,000	16,107	16,499	102
Layers Rendered, Died, Destroyed, Composted or Disappeared For Any Reason During May	1,000	4,526	3,633	80
Pullets Less Than 20 Weeks of Age, Jun 1	1,000	88,662	93,246	105
Pullets Added During May <sup>3</sup>	1,000	22,631	21,396	95

<sup>1</sup> The 30 States are listed in the table on page 8.

<sup>2</sup> Revised.

<sup>3</sup> Pullet chicks one day old added to pullet flocks.

**Layers and Eggs: Layers on Hand and Eggs Produced by State  
and United States, During April 1998-99**

State	Table Egg Layers in Flocks 30,000 and Above		All Layers <sup>1</sup>		Eggs per 100 for All Layers <sup>1</sup>	
	1998	1999 <sup>2</sup>	1998	1999 <sup>2</sup>	1998	1999 <sup>2</sup>
	<i>1,000</i>	<i>1,000</i>	<i>1,000</i>	<i>1,000</i>	<i>Number</i>	<i>Number</i>
AL	4,241	3,695	10,980	10,656	1,903	1,914
AR	4,403	4,473	14,772	15,069	1,848	1,891
CA	24,475	24,433	25,160	25,129	2,134	2,089
CO	3,145	2,919	3,749	3,458	2,134	2,140
CT	2,929	2,952	3,093	3,134	2,199	2,170
FL	9,430	10,008	10,070	10,719	2,066	2,090
GA	11,684	11,201	21,183	20,913	2,068	2,018
HI	613	613	638	643	2,010	2,037
IL	3,110	3,049	3,404	3,337	2,124	2,158
IN	20,760	21,198	21,443	21,934	2,197	2,156
IA	22,082	24,470	22,937	25,398	2,162	2,205
ME	4,582	4,577	4,704	4,694	2,317	2,407
MD	2,862	3,069	3,263	3,454	2,237	2,200
MI	4,948	5,385	5,202	5,656	2,121	2,161
MN	11,208	11,590	11,981	12,303	2,203	2,073
MS	1,723	1,475	6,746	6,628	1,957	1,946
MO	5,066	5,296	6,506	6,713	2,121	2,145
NE	10,364	10,902	10,514	11,052	2,145	2,081
NY	3,252	3,373	3,483	3,655	2,326	2,298
NC	3,829	3,588	11,286	11,504	1,861	1,878
OH	27,139	30,119	27,770	30,829	2,197	2,271
OK	2,100	1,980	4,062	4,151	1,920	1,927
OR	2,755	2,713	2,927	2,878	2,221	2,154
PA	20,582	21,159	21,944	22,590	2,260	2,249
SC	3,617	3,901	4,696	4,967	2,129	2,033
SD	2,103	1,930	2,306	2,174	2,238	2,254
TX	13,278	13,446	17,154	17,477	2,104	2,031
VA	1,521	1,404	3,630	3,559	1,928	1,911
WA	5,003	4,619	5,123	4,739	2,233	2,224
WI	3,334	3,177	3,968	3,657	2,193	2,215
30 Sts	236,138	242,714	294,694	303,070	2,119	2,111
Oth Sts <sup>3</sup>	11,694	12,247	17,223	17,847	2,084	2,073
US	247,832	254,961	311,917	320,917	2,117	2,109

<sup>1</sup> Includes all layers and eggs produced in both table egg and hatching egg flocks regardless of size.

<sup>2</sup> Revised.

<sup>3</sup> Estimates for individual States are not available.



**Layers and Eggs: Layers on Hand and Eggs Produced by State  
and United States, During May 1998-99**

State	Table Egg Layers in Flocks 30,000 and Above		All Layers <sup>1</sup>		Eggs per 100 for All Layers <sup>1</sup>	
	1998	1999	1998	1999	1998	1999
	<i>1,000</i>	<i>1,000</i>	<i>1,000</i>	<i>1,000</i>	<i>Number</i>	<i>Number</i>
AL	4,190	3,636	10,919	10,641	1,960	1,973
AR	4,291	4,414	14,652	14,863	1,911	1,951
CA	23,736	24,385	24,382	25,098	2,198	2,120
CO	3,063	2,874	3,663	3,413	2,157	2,227
CT	2,729	2,876	2,898	3,083	2,208	2,173
FL	9,305	9,906	9,945	10,605	2,081	2,093
GA	11,704	11,243	20,964	20,858	2,051	2,033
HI	592	600	616	630	2,110	2,079
IL	2,962	2,997	3,252	3,258	2,122	2,271
IN	20,757	21,180	21,475	21,907	2,291	2,237
IA	22,137	24,711	22,997	25,627	2,205	2,244
ME	4,645	4,533	4,760	4,646	2,374	2,454
MD	2,851	2,955	3,309	3,371	2,206	2,284
MI	4,875	5,387	5,128	5,659	2,168	2,142
MN	11,405	11,635	12,140	12,348	2,257	2,154
MS	1,753	1,387	6,783	6,517	1,990	1,949
MO	4,771	5,228	6,180	6,619	2,184	2,266
NE	10,303	11,089	10,453	11,239	2,210	2,127
NY	3,202	3,311	3,433	3,589	2,447	2,340
NC	3,717	3,355	11,278	11,258	1,933	1,936
OH	27,077	30,174	27,705	30,887	2,231	2,360
OK	2,058	1,991	4,091	4,129	1,980	1,986
OR	2,714	2,634	2,886	2,799	2,218	2,251
PA	20,228	21,036	21,592	22,449	2,283	2,285
SC	3,588	4,126	4,637	5,203	2,157	2,114
SD	2,090	1,975	2,293	2,224	2,355	2,338
TX	13,122	13,271	17,040	17,333	1,978	2,100
VA	1,518	1,402	3,698	3,531	2,082	1,954
WA	4,924	4,633	5,044	4,753	2,347	2,281
WI	3,183	3,165	3,824	3,670	2,327	2,289
30 Sts	233,490	242,109	292,037	302,207	2,156	2,165
Oth Sts <sup>2</sup>	12,076	12,099	17,578	17,665	2,094	2,140
US	245,566	254,208	309,615	319,872	2,153	2,164

<sup>1</sup> Includes all layers and eggs produced in both table egg and hatching egg flocks regardless of size.

<sup>2</sup> Estimates for individual States are not available.

**Egg Production: By Type, State, and United States,  
April 1998-99**

State	Total Production		Table Eggs <sup>1</sup>		Hatching Eggs <sup>1</sup>	
	1998	1999 <sup>2</sup>	1998	1999 <sup>2</sup>	1998	1999 <sup>2</sup>
	<i>Million Eggs</i>	<i>Million Eggs</i>	<i>Million Eggs</i>	<i>Million Eggs</i>	<i>Million Eggs</i>	<i>Million Eggs</i>
AL	209	204	93	83	116	121
AR	273	285	94	99	179	186
CA	537	525				
CO	80	74				
CT	68	68				
FL	208	224	196	212	12	12
GA	438	422	261	244	177	178
HI	13.0	13.1	13.0	13.1	0	0
IL	73	72	69	68	4	4
IN	471	473	460	461	11	12
IA	496	560				
ME	110	113				
MD	73	76	67	71	6	5
MI	110	122				
MN	263	255	252	245	11	10
MS	133	129	41	36	92	93
MO	138	144				
NE	226	230	226	230	0	0
NY	81	84				
NC	210	216	83	82	127	134
OH	610	700				
OK	78	80	47	45	31	35
OR	65	62	64	61	1	1
PA	496	508	480	491	16	17
SC	100	101	82	83	18	18
SD	52	49	52	49	0	0
TX	361	355				
VA	70	68	33	32	37	36
WA	114	105				
WI	87	81				
30 Sts	6,244	6,399	5,277	5,404	967	995
Oth Sts <sup>3</sup>	359	370	279	289	80	81
US	6,603	6,769	5,556	5,693	1,047	1,076

<sup>1</sup> Data by type of flock not shown for some States to avoid disclosing individual operations.

<sup>2</sup> Revised.

<sup>3</sup> Estimates for individual States are not available.

**Egg Production: By Type, State, and United States,  
May 1998-99**

State	Total Production		Table Eggs <sup>1</sup>		Hatching Eggs <sup>1</sup>	
	1998	1999	1998	1999	1998	1999
	<i>Million Eggs</i>	<i>Million Eggs</i>	<i>Million Eggs</i>	<i>Million Eggs</i>	<i>Million Eggs</i>	<i>Million Eggs</i>
AL	214	210	94	84	120	126
AR	280	290	94	100	186	190
CA	536	532				
CO	79	76				
CT	64	67				
FL	207	222	194	210	13	12
GA	430	424	252	237	178	187
HI	13.0	13.1	13.0	13.1	0	0
IL	69	74	65	70	4	4
IN	492	490	480	478	12	12
IA	507	575				
ME	113	114				
MD	73	77	67	71	6	6
MI	111	121				
MN	274	266	263	255	11	11
MS	135	127	42	33	93	94
MO	135	150				
NE	231	239	231	239	0	0
NY	84	84				
NC	218	218	86	79	132	139
OH	618	729				
OK	81	82	47	46	34	36
OR	64	63	63	62	1	1
PA	493	513	477	495	16	18
SC	100	110	82	91	18	19
SD	54	52	54	52	0	0
TX	337	364				
VA	77	69	36	31	41	38
WA	118	108				
WI	89	84				
30 Sts	6,297	6,544	5,298	5,512	999	1,032
Oth Sts <sup>2</sup>	368	378	286	293	82	85
US	6,665	6,922	5,584	5,805	1,081	1,117

<sup>1</sup> Data by type of flock not shown for some States to avoid disclosing individual operations.

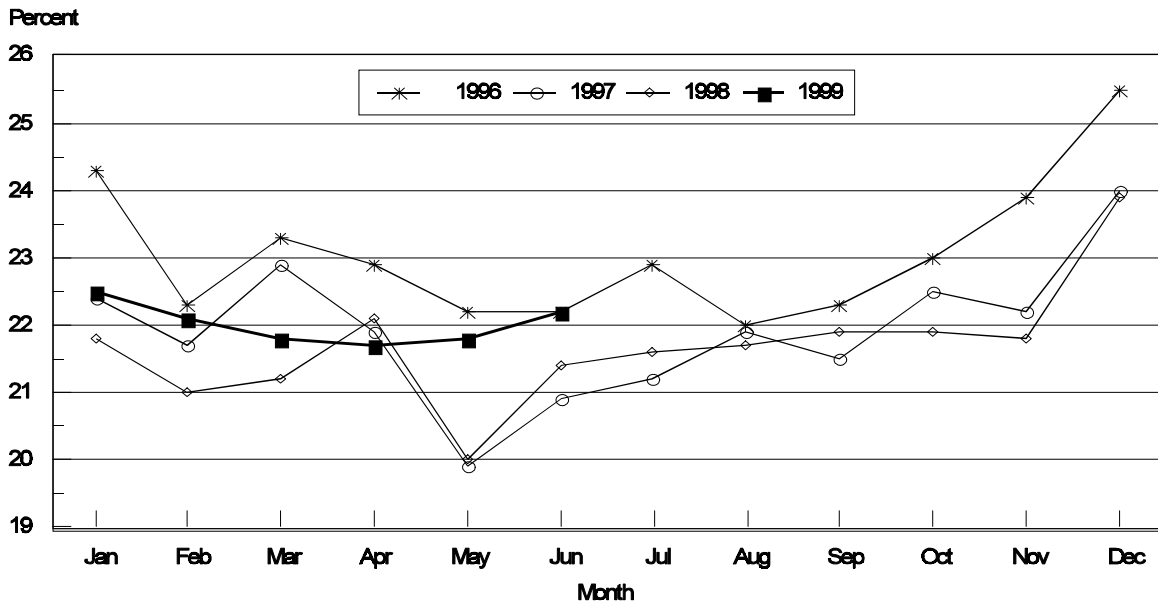
<sup>2</sup> Estimates for individual States are not available.

**Forced Molt: Percent of All Layers by Month,  
United States, 1998-99<sup>1</sup>**

Month	Percent Being Molted		Percent with Molt Completed	
	1998	1999	1998	1999
	<i>Percent</i>	<i>Percent</i>	<i>Percent</i>	<i>Percent</i>
Jan	4.1	4.1	21.8	22.5
Feb	5.2	4.9	21.0	22.1
Mar	4.4	3.3	21.2	21.8
Apr	2.2	2.8	22.1	21.7
May	5.5	5.6	20.0	21.8
Jun	4.8	5.1	21.4	22.2
Jul	3.9		21.6	
Aug	3.9		21.7	
Sep	4.1		21.9	
Oct	4.9		21.9	
Nov	3.7		21.8	
Dec	2.7		23.9	

<sup>1</sup> As of first of month.

**All Layers: United States  
Percent Molt Completed, 1996 - 1999  
First of Month**



**Forced Molt: Percent of All Layers by State  
and United States, June 1998-99 <sup>1</sup>**

State	Percent Being Molted		Percent with Molt Completed	
	1998	1999	1998	1999
	<i>Percent</i>	<i>Percent</i>	<i>Percent</i>	<i>Percent</i>
AL	3.0	5.0	12.0	12.0
AR	4.5	1.5	7.5	11.0
CA	9.5	10.5	31.0	41.0
CO	12.5	4.0	24.0	28.0
CT	0.0	5.5	12.5	3.5
FL	6.0	11.5	38.5	39.0
GA	9.5	5.5	14.0	15.5
HI	9.0	7.0	45.5	44.0
IL	11.0	8.5	21.5	31.0
IN	2.0	3.0	34.0	31.0
IA	5.0	4.0	33.5	28.0
ME	0.0	0.0	0.0	1.0
MD	4.0	3.0	27.0	40.0
MI	3.5	4.0	13.0	22.0
MN	1.5	4.5	30.5	34.5
MS	2.0	3.5	10.0	8.0
MO	2.5	1.5	15.5	23.0
NE	6.0	8.0	22.5	21.5
NY	3.0	0.0	3.5	4.0
NC	1.0	3.5	11.0	7.5
OH	2.0	3.5	14.5	12.5
OK	3.0	3.0	11.0	5.5
OR	4.0	8.0	38.0	33.5
PA	5.0	7.5	16.5	17.0
SC	4.5	1.0	34.0	27.0
SD	4.0	7.5	25.0	26.5
TX	6.0	7.0	23.5	22.0
VA	2.0	0.0	15.0	13.0
WA	4.5	4.5	30.0	47.0
WI	7.5	5.0	23.5	22.0
30 Sts	4.7	5.1	21.5	22.3
Oth Sts <sup>2</sup>	5.7	4.5	20.3	20.2
US	4.8	5.1	21.4	22.2

<sup>1</sup> As of first of month.

<sup>2</sup> Estimates for individual States are not available.

**Hatchery Production: Eggs in Incubators, Chicks Hatched,  
and Placements by Type, United States, May-June 1998-99**

Item	1998	1999	1999 as % of 1998
	<i>1,000</i>	<i>1,000</i>	<i>Percent</i>
<b>Egg-Type</b>			
Eggs in Incubators on Jun 1	36,739	37,268	101
Chicks Hatched During May	39,192	40,590	104
Chicks Hatched Jan thru May	190,577	195,259	102
Pullets Hatched During May for Intended Placements in Hatchery Supply Flocks	192	283	147
7-18 Month Earlier <sup>1</sup>	3,057	3,044	100
<b>Broiler-Type</b>			
Eggs in Incubators on Jun 1	614,472	636,321	104
Chicks Hatched During May	739,319	766,161	104
Chicks Hatched Jan thru May	3,534,448	3,652,767	103
Pullets Hatched During May for Intended Placements in Hatchery Supply Flocks	7,062	7,736	110
7-15 Months Earlier <sup>2</sup>	58,085	61,893	107

<sup>1</sup> 1999 includes pullet chicks hatched Nov 1997 through Oct 1998.

<sup>2</sup> 1999 includes pullet chicks hatched Feb 1998 through Oct 1998.

**Egg-Type Eggs in Incubators: By Region and United States,  
June 1, 1998-99**

Geographic Division	1998	1999	1999 as % of 1998
	<i>1,000</i>	<i>1,000</i>	<i>Percent</i>
North Atlantic	6,686	7,110	106
E North Central	9,170	9,159	100
W North Central	7,005	7,439	106
South Atlantic	5,111	4,153	81
South Central	3,488	3,787	109
West	5,279	5,620	106
US	36,739	37,268	101

Regional Listing:

North Atlantic = CT, ME, MA, NH, NJ, NY, PA, RI, VT.

E North Central = IL, IN, MI, OH, WI.

W North Central = IA, KS, MN, MO, NE, ND, SD.

South Atlantic = DE, FL, GA, MD, NC, SC, VA, WV.

South Central = AL, AR, KY, LA, MS, OK, TN, TX.

West = AK, AZ, CA, CO, HI, ID, MT, NM, NV, OR, UT, WA, WY.

**Egg-Type Chicks Hatched: By State and United States,  
May 1998-99**

State	May			Jan-May		
	1998	1999	1999 as % of 1998	1998	1999	1999 as % of 1998
	<i>1,000</i>	<i>1,000</i>	<i>Percent</i>	<i>1,000</i>	<i>1,000</i>	<i>Percent</i>
AR	819	1,013	124	4,417	4,085	92
FL	1,190	996	84	5,699	5,576	98
GA	2,088	2,319	111	10,513	10,351	98
IN	6,949	8,004	115	35,300	37,122	105
IA	4,350	5,567	128	21,886	25,175	115
KS	323	348	108	1,345	1,698	126
MN	2,068	1,856	90	9,198	9,914	108
MO	403	403	100	1,802	1,803	100
PA	4,967	5,088	102	26,402	28,318	107
Oth Sts <sup>1</sup>	16,035	14,996	94	74,015	71,217	96
US	39,192	40,590	104	190,577	195,259	102

<sup>1</sup> Not published separately to avoid disclosing data for individual operations.

**Egg-Type Chicks Hatched: By Month, United States, 1997-99**

Month	By Months				Cumulative			
	1997	1998	1999	1999 as % of 1998	1997	1998	1999	1999 as % of 1998
	<i>1,000</i>	<i>1,000</i>	<i>1,000</i>	<i>Percent</i>	<i>1,000</i>	<i>1,000</i>	<i>1,000</i>	<i>Percent</i>
Jan	33,752	37,159	35,653	96	33,752	37,159	35,653	96
Feb	35,655	34,593	35,648	103	69,407	71,752	71,301	99
Mar	37,347	40,590	41,325	102	106,754	112,342	112,626	100
Apr	38,842	39,043	42,043	108	145,596	151,385	154,669	102
May	39,020	39,192	40,590	104	184,616	190,577	195,259	102
Jun	36,796	39,302			221,412	229,879		
Jul	33,772	35,558			255,184	265,437		
Aug	33,061	33,380			288,245	298,817		
Sep	37,118	37,943			325,363	336,760		
Oct	35,262	34,649			360,625	371,409		
Nov	28,122	31,251			388,747	402,660		
Dec	35,796	35,733			424,543	438,393		

**Intended Placements: Egg-Type Pullet Chicks for Hatchery Supply  
Flocks by Month and Total, United States, 1997-99<sup>1</sup>**

Month	Pullet Chicks Hatched			1999 as % of 1998	Cumulative Potential Placements Relative to Current Supply Flocks 7-18 Months Earlier <sup>2</sup>		
	1997	1998	1999		1997	1998	1999
	<i>1,000</i>	<i>1,000</i>	<i>1,000</i>	<i>Percent</i>	<i>1,000</i>	<i>1,000</i>	<i>1,000</i>
Jan	208	189	166	88	2,953	2,823	3,029
Feb	222	250	267	107	2,984	2,764	3,120
Mar	209	225	257	114	3,007	2,863	3,020
Apr	316	333	287	86	2,946	3,034	2,942
May	273	192	283	147	2,870	3,057	3,044
Jun	254	354			2,956	2,976	3,132
Jul	207	298			2,940	2,968	3,108
Aug	285	185			2,929	2,949	3,085
Sep	402	324			2,913	2,977	3,102
Oct	256	358			2,805	2,993	3,134
Nov	129	217			2,869	3,010	3,088
Dec	207	183			2,851	2,929	3,179
Total	2,968	3,108					

<sup>1</sup> Reported by leading breeders. Coverage may not be 100 percent. Includes expected pullet chicks from eggs sold during the preceding month at the rate of 125 pullet chicks per 30 dozen case of eggs.

<sup>2</sup> For May 1999, includes breeder pullet chicks hatched Nov 1997 through Oct 1998. The 7-18 months represent the first laying cycle. Molting and additional laying cycles will increase the cumulative potential placements.

**Broiler-Type Eggs in Incubators: By Region  
and United States, June 1, 1998-99**

Geographic Division	1998	1999	1999 as % of 1998
	<i>1,000</i>	<i>1,000</i>	<i>Percent</i>
North Atlantic	12,421	11,630	94
E North Central	9,509	8,998	95
W North Central	23,374	22,519	96
South Atlantic	233,478	240,832	103
South Central	311,736	326,245	105
West	23,954	26,097	109
US	614,472	636,321	104



**Broiler-Type Chicks Hatched: By State  
and United States, May 1998-99**

State	May			Jan-May		
	1998	1999	1999 as % of 1998	1998	1999	1999 as % of 1998
	<i>1,000</i>	<i>1,000</i>	<i>Percent</i>	<i>1,000</i>	<i>1,000</i>	<i>Percent</i>
AL	97,046	100,134	103	455,354	477,172	105
AR	107,749	111,701	104	523,415	535,537	102
DE	16,478	16,475	100	79,528	78,906	99
FL	10,184	9,734	96	48,422	49,179	102
GA	111,552	114,469	103	529,284	551,669	104
MD	32,229	32,551	101	153,863	154,426	100
MS	65,139	66,416	102	313,640	320,497	102
NC	63,157	66,160	105	303,274	312,942	103
PA	13,269	13,100	99	63,417	64,150	101
SC	15,460	17,015	110	73,054	80,520	110
TX	45,666	50,054	110	223,489	240,258	108
VA	24,826	24,992	101	117,446	119,062	101
CA TN & WV	40,664	42,275	104	190,944	198,609	104
15 Sts <sup>1</sup>	643,419	665,076	103	3,075,130	3,182,927	104
Oth Sts <sup>2</sup>	95,900	101,085	105	459,318	469,840	102
US	739,319	766,161	104	3,534,448	3,652,767	103

<sup>1</sup> States in the weekly hatchery production estimating program.

<sup>2</sup> Not published separately to avoid disclosing data for individual operations.

**Broiler Chicks Hatched: By Month, United States, 1997-99**

Month	By Months				Cumulative			
	1997	1998	1999	1999 as % of 1998	1997	1998	1999	1999 as % of 1998
	<i>1,000</i>	<i>1,000</i>	<i>1,000</i>	<i>Percent</i>	<i>1,000</i>	<i>1,000</i>	<i>1,000</i>	<i>Percent</i>
Jan	699,952	711,373	735,348	103	699,952	711,373	735,348	103
Feb	634,142	645,180	661,739	103	1,334,094	1,356,553	1,397,087	103
Mar	718,413	730,316	755,179	103	2,052,507	2,086,869	2,152,266	103
Apr	693,717	708,260	734,340	104	2,746,224	2,795,129	2,886,606	103
May	724,679	739,319	766,161	104	3,470,903	3,534,448	3,652,767	103
Jun	704,247	717,967			4,175,150	4,252,415		
Jul	710,622	722,715			4,885,772	4,975,130		
Aug	708,572	715,650			5,594,344	5,690,780		
Sep	684,156	695,281			6,278,500	6,386,061		
Oct	683,185	693,189			6,961,685	7,079,250		
Nov	648,141	678,003			7,609,826	7,757,253		
Dec	711,808	737,840			8,321,634	8,495,093		

**Intended Placements: Broiler-Type Pullet Chicks for Hatchery  
Supply Flocks by Month and Total, 1997-99 <sup>1</sup>**

Month	Pullet Chicks Hatched			1999 as % of 1998	Cumulative Potential Placements Relative to Current Supply Flocks 7-15 Months Earlier <sup>2</sup>		
	1997	1998	1999		1997	1998	1999
	<i>1,000</i>	<i>1,000</i>	<i>1,000</i>	<i>Percent</i>	<i>1,000</i>	<i>1,000</i>	<i>1,000</i>
US Place- ments							
Jan	6,397	6,765	7,059	104	56,101	56,552	59,403
Feb	5,916	6,328	6,882	109	56,122	57,494	59,937
Mar	6,443	6,776	7,195	106	55,981	57,677	60,699
Apr	6,036	6,687	7,038	105	55,933	58,228	61,775
May	7,062	7,062	7,736	110	56,667	58,085	61,893
Jun	6,008	6,932			57,264	58,516	62,877
Jul	7,167	6,788			57,115	58,325	63,005
Aug	6,697	7,109			56,761	59,054	63,377
Sep	6,502	7,328			55,897	58,320	63,197
Oct	6,254	6,883			56,165	59,088	63,460
Nov	6,347	7,312			56,167	58,608	63,710
Dec	6,252	6,904			56,714	58,973	64,337
Annual Total	77,081	82,874					
Total Place- ments <sup>3</sup>							
Jan	7,547	8,613	8,679	101			
Feb	7,122	8,273	8,473	102			
Mar	7,894	8,760	8,863	101			
Apr	7,238	8,300	8,572	103			
May	8,505	8,957	9,463	106			
Jun	7,381	8,757					
Jul	8,460	8,423					
Aug	8,132	8,686					
Sep	8,092	8,985					
Oct	8,142	8,756					
Nov	7,973	9,412					
Dec	8,237	8,830					
Annual Total	94,723	104,752					

<sup>1</sup> Reported by leading breeders. Coverage may not be 100 percent. Includes expected pullet chicks from eggs sold during the preceding month at the rate of 125 pullet chicks per 30 dozen case of eggs.

<sup>2</sup> For May 1999, includes breeder pullet chicks hatched Feb 1998 through Oct 1998.

<sup>3</sup> U.S. production of intended placements worldwide.

## Procedures and Reliability

**Data Sources:** Primary data for the "**Chickens and Eggs**" report are from weekly and/or monthly questionnaires sent to producers. An attempt is made to collect information for layer and egg estimates from each known contractor and independent producer who has over 30,000 table egg layers. Coverage for operations with less than 30,000 table egg layers are estimated each month based on data reported in December. Approximately 900 contractors, independent egg producers, and started pullet operations are contacted each month. All known hatcheries, approximately 360, are contacted for information on a weekly and/or monthly basis.

**Revisions:** The previous month's estimates are subject to revision if late reports or corrected data indicates a different level. Additionally, revisions needed after the monthly report will be made at the end of the marketing year and published in the annual summaries of "**Layers and Egg Production**" and "**Hatchery Production**".

**Procedures and Reliability:** Operations are mailed a questionnaire and given adequate time to respond by mail. Those that do not respond are phoned. Great care is exercised to ensure that all operations are accounted for during each survey period. However, there are usually missing reports that must be accounted for in the estimates.

Sound statistical methodology is employed to derive estimates from the reported data. All data are checked for unusual values. All operations' data are compared to their own past operating profiles and also to trends from other operations. Data for missing operations are estimated based on similar operations or historical data. Survey data are subject to non-sampling errors such as omissions and mistakes in reporting and in processing. While these errors cannot be measured directly, they are minimized by reviewing all data for consistency and reasonableness.

Egg-type chicks hatched are comprised of all chicks of egg-type domesticated breeds including males and chicks destined for hatchery supply flocks and research purposes. The relationship of chicks hatched to chicken inventory and poultry marketings is carefully monitored. The disposition of egg-type chicks hatched prior to placement into the laying flock can vary significantly, which can make comparisons to changes in layer inventory inconsistent over time.

Intended placement data reported by leading breeders include pullet chicks expected from eggs sold the preceding month. The breeders in this report account for a large percentage of replacement pullets for hatchery supply flocks. Production of replacement pullets by these breeders indicates the number of pullets available to hatchery egg supply flocks several months before the pullets will actually move into the flocks. Beginning with the January 1996 publication the broiler-type cumulative potential placements went from 7-14 months earlier to 7-15 months earlier. The egg-type cumulative potential placements of 7-18 months represent the first laying cycle. Molting and additional laying cycles will increase the cumulative potential placements of egg-type hatching flocks.

The next "Chickens and Eggs" report will be released at 3 p.m. ET on July 23, 1999.

The United States Department of Agriculture (USDA) prohibits discrimination in all its programs on the basis of race, color, national origin, gender, religion, age, disability, political beliefs, sexual orientation, and marital or family status. (Not all prohibited bases apply to all programs.) Persons with disabilities who require alternative means for communication of program information (braille, large print, audiotape, etc.) should contact the USDA's TARGET Center at 202-720-2600 (voice and TDD).

To file a complaint of discrimination, write USDA, Director, Office of Civil Rights, Room 326-W, Whitten Building, 14th and Independence Avenue, SW, Washington, D.C., 20250-9410, or call 202-720-5964 (voice or TDD). USDA is an equal opportunity provider and employer.

## **ACCESS TO REPORTS!!**

---

For your convenience, there are several ways to obtain NASS reports, data products, and services:

### **INTERNET ACCESS**

All NASS reports are available free of charge on the worldwide Internet. For access, connect to the Internet and go to the NASS Home Page at: <http://www.usda.gov/nass/>. Select "Today's Reports" or Publications and then Reports by Calendar or Publications and then Search, by Title or Subject.

### **E-MAIL SUBSCRIPTION**

All NASS reports are available by subscription free of charge direct to your e-mail address. Send an e-mail message to: [usda-reports@usda.mannlib.cornell.edu](mailto:usda-reports@usda.mannlib.cornell.edu). In the body of the message type the word: **list**.

### **AUTOFAX ACCESS**

NASSFax service is available for some reports from your fax machine. Please call 202-720-2000, using the handset attached to your fax. Respond to the voice prompts. Document 0411 is a list of available reports.

-----

### **PRINTED REPORTS OR DATA PRODUCTS**

**CALL OUR TOLL-FREE ORDER DESK: 800-999-6779 (U.S. and Canada)**  
Other areas, please call 703-834-0125      FAX: 703-834-0110  
(Visa, MasterCard, check, or money order acceptable for payment.)

-----

### **ASSISTANCE**

For **assistance** with general agricultural statistics or further information about NASS or its products or services, contact the **Agricultural Statistics Hotline** at **800-727-9540**, 7:30 a.m. to 4:00 p.m. ET, or e-mail: [nass@nass.usda.gov](mailto:nass@nass.usda.gov).