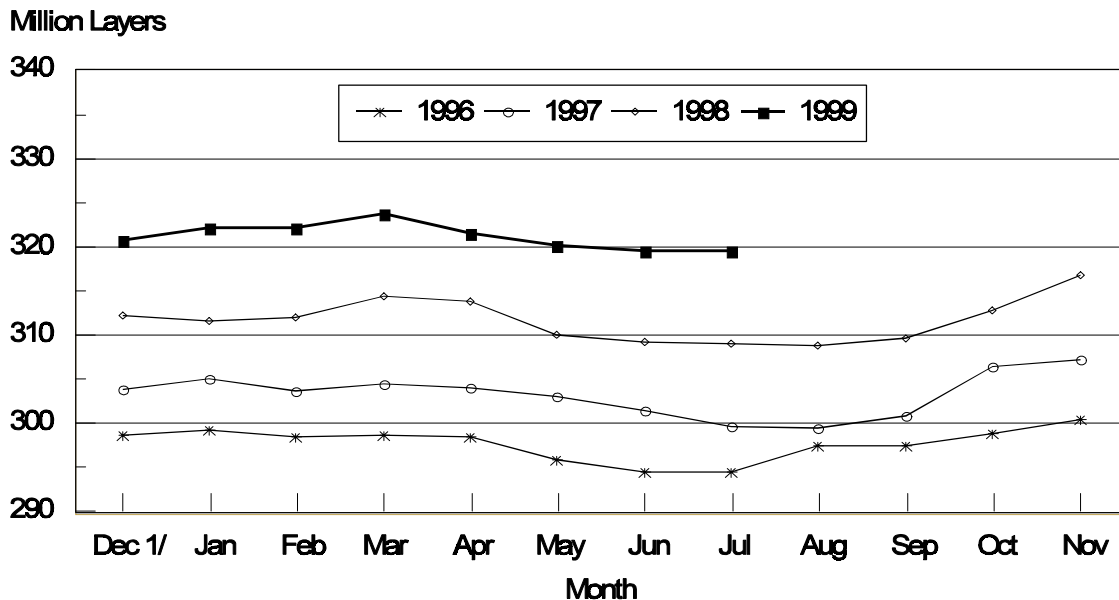


Released July 23, 1999, by the National Agricultural Statistics Service (NASS), Agricultural Statistics Board, U.S. Department of Agriculture. For information on "Chickens and Eggs" call Dan Boostrom at (202) 720-3244. For information on Hatch call Tom Kruchten at (202) 690-4870, office hours 7:30 a.m. to 4:00 p.m. ET.

June Egg Production Up 4 Percent

U.S. egg production totaled 6.72 billion during June 1999, up 4 percent from the 6.46 billion produced in 1998. Production included 5.63 billion table eggs and 1.09 billion hatching eggs, of which 1.02 billion were broiler-type and 67.0 million were egg-type. The total number of layers during June 1999 averaged 320 million, up 3 percent from the total average number of layers during June 1998. June egg production per 100 layers was 2,104 eggs, up 1 percent from 2,088 eggs in June 1998.

All Layers: 1st of Month United States, 1996 - 1999



1/ Previous Year

All layers in the U.S. on July 1, 1999, totaled 320 million, up 3 percent from a year ago. The 320 million layers consisted of 259 million layers producing table or commercial type eggs, 57.3 million layers producing broiler-type hatching eggs, and 2.81 million layers producing egg-type hatching eggs. Rate of lay per day on July 1, 1999, averaged 70.1 eggs per 100 layers, up fractionally from the 70.0 a year ago.

Laying flocks in the 30 major egg producing States produced 6.35 billion eggs during June, up 4 percent from June 1998. The average number of layers during June, at 302 million, was up 3 percent from a year earlier.

Individual State estimates are available for the 30 major egg producing States. These States are listed on page 8 of this release and account for approximately 95 percent of the total U.S. egg production. Production for the other States are grouped into an "Other States" category and combined with the 30 States published individually to obtain a U.S. estimate. Individual State estimates' for "Other States" are available annually in the "**Layers and Egg Production**" report.

Egg-Type Chicks Hatched Up 3 Percent

Egg-type chicks **hatched** during June totaled 40.6 million, up 3 percent from June 1998. **Eggs in incubators** totaled 31.0 million on July 1, 1999, down 3 percent from a year ago.

Domestic placements of **egg-type pullet chicks for future hatchery supply flocks** by leading breeders totaled 187,000 during June 1999, down 47 percent from June 1998.

Broiler Hatch Up 4 Percent

The June 1999 **hatch** of broiler-type chicks, at 744 million, was up 4 percent from June of the previous year. There were 628 million **eggs in incubators** on July 1, 1999, up 3 percent from a year earlier.

Leading breeders placed 7.04 million **broiler-type pullet chicks for future domestic hatchery supply flocks** during June 1999, up 2 percent from June 1998.

**All Layers: Average Number on Hand During the Month,
United States, 1996-99**

Month	1996	1997	1998	1999
	<i>1,000 Layers</i>	<i>1,000 Layers</i>	<i>1,000 Layers</i>	<i>1,000 Layers</i>
Dec ¹	299,345	304,463	311,888	321,193
Jan	299,230	304,289	311,876	322,136
Feb	298,904	304,000	313,245	322,754
Mar	298,853	304,285	314,101	322,516
Apr	297,493	303,618	311,917	320,917
May	295,516	302,241	309,615	319,851
Jun	294,837	300,537	309,166	319,569
Jul	296,290	299,605	308,927	
Aug	297,804	300,211	309,251	
Sep	298,582	303,661	311,278	
Oct	300,052	306,807	314,847	
Nov	302,386	309,670	318,797	

¹ December preceding year.

**Eggs: Production During the Month by Type,
United States, 1998-99**

Month	Total Eggs		Table Eggs		Hatching Eggs	
	1998	1999	1998	1999	1998	1999
	<i>Million Eggs</i>	<i>Million Eggs</i>	<i>Million Eggs</i>	<i>Million Eggs</i>	<i>Million Eggs</i>	<i>Million Eggs</i>
Dec ¹	6,841	7,029	5,802	5,957	1,039	1,072
Jan	6,766	6,971	5,720	5,890	1,046	1,081
Feb	6,109	6,282	5,150	5,296	959	986
Mar	6,869	7,043	5,797	5,934	1,072	1,109
Apr	6,603	6,769	5,556	5,693	1,047	1,076
May	6,665	6,925	5,584	5,808	1,081	1,117
Jun	6,456	6,724	5,433	5,634	1,023	1,090
Jul	6,720		5,674		1,046	
Aug	6,694		5,655		1,039	
Sep	6,480		5,480		1,000	
Oct	6,791		5,746		1,045	
Nov	6,723		5,695		1,028	
During Year	79,717	47,743	67,292	40,212	12,425	7,531

¹ December preceding year.

**Layers and Eggs: Layers on Hand and Eggs Produced by Type,
and Forced Molt, United States, May-June 1998-99 ¹**

Item	Unit	1998	1999	1999 as % of 1998
Layers During May	1,000			
All Layers		309,615	319,851	103
Table Egg Type		251,737	260,283	103
Hatching Egg Type		57,878	59,568	103
Broiler-Type Hatching		55,237	56,745	103
Egg-Type Hatching		2,641	2,823	107
Eggs per 100 Layers During May	Number			
All Layers		2,153	2,165	101
Table Egg Type		2,218	2,231	101
Hatching Egg Type		1,868	1,875	100
Broiler-Type Hatching		1,839	1,847	100
Egg-Type Hatching		2,461	2,444	99
Eggs Produced During May	Million			
All Layers		6,665	6,925	104
Table Egg Type		5,584	5,808	104
Hatching Egg Type		1,081	1,117	103
Broiler-Type Hatching		1,016	1,048	103
Egg-Type Hatching		65	69	106
Layers on Jun 1	1,000			
All Layers		309,235	319,510	103
Table Egg Type		251,656	259,933	103
Hatching Egg Type		57,579	59,577	103
Broiler-Type Hatching		54,947	56,708	103
Egg-Type Hatching		2,632	2,869	109
Eggs per 100 Layers on Jun 1	Number			
All Layers		69.1	70.0	101
Table Egg Type		71.2	72.2	101
Hatching Egg Type		60.0	60.5	101
Broiler-Type Hatching		59.2	59.7	101
Egg-Type Hatching		77.7	78.2	101
Forced Molt Layers on Jun 1	Percent			
Percent Being Molted		4.8	5.2	108
Percent with Molt Completed		21.4	21.9	102
Layers Sold for Slaughter During May	1,000	16,945	17,407	103
Layers Rendered, Died, Destroyed, Composted or Disappeared For Any Reason During May	1,000	4,755	3,704	78
Pullets Less Than 20 Weeks of Age, Jun 1	1,000	93,816	98,719	105
Pullets Added During May ²	1,000	23,717	22,694	96

¹ Revised.

² Pullet chicks one day old added to pullet flocks.

**Layers and Eggs: Layers on Hand and Eggs Produced by Type,
and Forced Molt, United States, June-July 1998-99**

Item	Unit	1998 ¹	1999	1999 as % of 1998
Layers During Jun	1,000			
All Layers		309,166	319,569	103
Table Egg Type		251,864	259,727	103
Hatching Egg Type		57,302	59,842	104
Broiler-Type Hatching		54,711	57,001	104
Egg-Type Hatching		2,591	2,841	110
Eggs per 100 Layers During Jun	Number			
All Layers		2,088	2,104	101
Table Egg Type		2,157	2,169	101
Hatching Egg Type		1,785	1,821	102
Broiler-Type Hatching		1,760	1,795	102
Egg-Type Hatching		2,316	2,358	102
Eggs Produced During Jun	Million			
All Layers		6,456	6,724	104
Table Egg Type		5,433	5,634	104
Hatching Egg Type		1,023	1,090	107
Broiler-Type Hatching		963	1,023	106
Egg-Type Hatching		60	67	112
Layers on Jul 1	1,000			
All Layers		309,049	319,588	103
Table Egg Type		252,046	259,499	103
Hatching Egg Type		57,003	60,089	105
Broiler-Type Hatching		54,460	57,282	105
Egg-Type Hatching		2,543	2,807	110
Eggs per 100 Layers on Jul 1	Number			
All Layers		70.0	70.1	100
Table Egg Type		72.5	72.3	100
Hatching Egg Type		58.8	60.6	103
Broiler-Type Hatching		58.0	59.7	103
Egg-Type Hatching		76.4	77.1	101
Forced Molt Layers, Jul 1	Percent			
Percent Being Molted		3.9	5.5	141
Percent with Molt Completed		21.6	22.0	102
Layers Sold for Slaughter During Jun	1,000	15,596	17,645	113
Layers Rendered, Died, Destroyed, Composted or Disappeared For Any Reason During Jun	1,000	4,440	3,895	88
Pullets Less Than 20 Weeks of Age, Jul 1	1,000	93,721	99,297	106
Pullets Added During Jun ²	1,000	20,775	23,335	112

¹ Revised.

² Pullet chicks one day old added to pullet flocks.

**Layers and Eggs: Layers on Hand and Eggs Produced by Type, and Forced
Molt, May-June, 30 Selected States, 1998-99^{1 2}**

Item	Unit	1998	1999	1999 as % of 1998
Layers During May	1,000			
All Layers		292,037	302,208	103
Table Egg Type		238,528	247,144	104
Hatching Egg Type		53,509	55,064	103
Broiler-Type Hatching		50,978	52,354	103
Egg-Type Hatching		2,531	2,710	107
Eggs per 100 Layers During May	Number			
All Layers		2,156	2,166	100
Table Egg Type		2,221	2,231	100
Hatching Egg Type		1,867	1,874	100
Broiler-Type Hatching		1,838	1,845	100
Egg-Type Hatching		2,450	2,435	99
Eggs Produced During May	Million			
All Layers		6,297	6,547	104
Table Egg Type		5,298	5,515	104
Hatching Egg Type		999	1,032	103
Broiler-Type Hatching		937	966	103
Egg-Type Hatching		62	66	106
Layers on Jun 1	1,000			
All Layers		291,496	301,806	104
Table Egg Type		238,193	246,717	104
Hatching Egg Type		53,303	55,089	103
Broiler-Type Hatching		50,774	52,329	103
Egg-Type Hatching		2,529	2,760	109
Eggs per 100 Layers on Jun 1	Number			
All Layers		69.2	70.1	101
Table Egg Type		71.3	72.2	101
Hatching Egg Type		60.1	60.5	101
Broiler-Type Hatching		59.2	59.6	101
Egg-Type Hatching		77.4	78.1	101
Forced Molt Layers on Jun 1	Percent			
Percent Being Molted		4.7	5.2	111
Percent with Molt Completed		21.5	22.0	102
Layers Sold for Slaughter During May	1,000	16,107	16,549	103
Layers Rendered, Died, Destroyed, Composted or Disappeared For Any Reason During May	1,000	4,526	3,538	78
Pullets Less Than 20 Weeks of Age, Jun 1	1,000	88,662	93,377	105
Pullets Added During May ³	1,000	22,631	21,486	95

¹ The 30 States are listed in the table on page 8.

² Revised.

³ Pullet chicks one day old added to pullet flocks.

Layers and Eggs: Layers on Hand and Eggs Produced by Type, and Forced Molt, 30 Selected States, June-July, 1998-99 ¹

Item	Unit	1998 ²	1999	1999 as % of 1998
Layers During Jun	1,000			
All Layers		291,545	301,706	103
Table Egg Type		238,533	246,366	103
Hatching Egg Type		53,012	55,340	104
Broiler-Type Hatching		50,527	52,613	104
Egg-Type Hatching		2,485	2,727	110
Eggs per 100 Layers During Jun	1,000			
All Layers		2,093	2,104	101
Table Egg Type		2,161	2,168	100
Hatching Egg Type		1,786	1,821	102
Broiler-Type Hatching		1,761	1,794	102
Egg-Type Hatching		2,294	2,347	102
Eggs Produced During Jun	Million			
All Layers		6,102	6,349	104
Table Egg Type		5,155	5,341	104
Hatching Egg Type		947	1,008	106
Broiler-Type Hatching		890	944	106
Egg-Type Hatching		57	64	112
Layers on Jul 1	1,000			
All Layers		291,560	301,574	103
Table Egg Type		238,855	245,997	103
Hatching Egg Type		52,705	55,577	105
Broiler-Type Hatching		50,270	52,888	105
Egg-Type Hatching		2,435	2,689	110
Eggs per 100 Layers on Jul 1	Number			
All Layers		70.2	70.1	100
Table Egg Type		72.7	72.2	99
Hatching Egg Type		58.9	60.7	103
Broiler-Type Hatching		58.0	59.8	103
Egg-Type Hatching		76.3	77.5	102
Forced Molt Layers, Jul 1	Percent			
Percent Being Molted		3.8	5.5	145
Percent with Molt Completed		21.5	22.2	103
Layers Sold for Slaughter During Jun	1,000	14,668	16,855	115
Layers Rendered, Died, Destroyed, Composted or Disappeared For Any Reason During Jun	1,000	4,264	3,721	87
Pullets Less Than 20 Weeks of Age, Jul 1	1,000	88,633	93,447	105
Pullets Added During Jun ³	1,000	19,997	22,059	110

¹ The 30 States are listed in the table on page 8.

² Revised.

³ Pullet chicks one day old added to pullet flocks.

**Layers and Eggs: Layers on Hand and Eggs Produced by State
and United States, During May 1998-99**

State	Table Egg Layers in Flocks 30,000 and Above		All Layers ¹		Eggs per 100 for All Layers ¹	
	1998	1999 ²	1998	1999 ²	1998	1999 ²
	<i>1,000</i>	<i>1,000</i>	<i>1,000</i>	<i>1,000</i>	<i>Number</i>	<i>Number</i>
AL	4,190	3,636	10,919	10,641	1,960	1,973
AR	4,291	4,414	14,652	14,863	1,911	1,951
CA	23,736	24,385	24,382	25,098	2,198	2,120
CO	3,063	2,874	3,663	3,413	2,157	2,227
CT	2,729	2,876	2,898	3,083	2,208	2,173
FL	9,305	9,881	9,945	10,580	2,081	2,127
GA	11,704	11,243	20,964	20,858	2,051	2,033
HI	592	600	616	630	2,110	2,079
IL	2,962	2,997	3,252	3,258	2,122	2,271
IN	20,757	21,180	21,475	21,907	2,291	2,237
IA	22,137	24,711	22,997	25,627	2,205	2,244
ME	4,645	4,533	4,760	4,646	2,374	2,454
MD	2,851	2,994	3,309	3,410	2,206	2,258
MI	4,875	5,387	5,128	5,659	2,168	2,142
MN	11,405	11,635	12,140	12,348	2,257	2,154
MS	1,753	1,387	6,783	6,517	1,990	1,949
MO	4,771	5,228	6,180	6,619	2,184	2,266
NE	10,303	11,089	10,453	11,239	2,210	2,127
NY	3,202	3,311	3,433	3,589	2,447	2,340
NC	3,717	3,355	11,278	11,258	1,933	1,936
OH	27,077	30,174	27,705	30,887	2,231	2,360
OK	2,058	1,991	4,091	4,129	1,980	1,986
OR	2,714	2,634	2,886	2,799	2,218	2,251
PA	20,228	21,036	21,592	22,449	2,283	2,285
SC	3,588	4,126	4,637	5,203	2,157	2,114
SD	2,090	1,975	2,293	2,224	2,355	2,338
TX	13,122	13,271	17,040	17,333	1,978	2,100
VA	1,518	1,402	3,698	3,531	2,082	1,954
WA	4,924	4,633	5,044	4,753	2,347	2,281
WI	3,183	3,165	3,824	3,657	2,327	2,297
30 Sts	233,490	242,123	292,037	302,208	2,156	2,166
Oth Sts ³	12,076	12,094	17,578	17,643	2,094	2,142
US	245,566	254,217	309,615	319,851	2,153	2,165

¹ Includes all layers and eggs produced in both table egg and hatching egg flocks regardless of size.

² Revised.

³ Estimates for individual States are not available.

**Layers and Eggs: Layers on Hand and Eggs Produced by State
and United States, During June 1998-99**

State	Table Egg Layers in Flocks 30,000 and Above		All Layers ¹		Eggs per 100 for All Layers ¹	
	1998	1999	1998	1999	1998	1999
	<i>1,000</i>	<i>1,000</i>	<i>1,000</i>	<i>1,000</i>	<i>Number</i>	<i>Number</i>
AL	4,098	3,558	10,878	10,685	1,857	1,900
AR	4,422	4,657	14,706	15,165	1,806	1,886
CA	23,727	24,340	24,373	25,048	2,199	2,124
CO	3,066	2,866	3,667	3,412	1,963	2,140
CT	2,727	2,799	2,898	3,006	2,174	2,129
FL	9,290	9,649	9,932	10,349	2,014	2,068
GA	12,051	11,238	21,126	20,976	1,927	1,988
HI	575	593	600	622	2,112	2,010
IL	2,826	2,932	3,116	3,180	2,128	2,327
IN	20,760	21,374	21,503	22,117	2,255	2,211
IA	22,381	24,642	23,241	25,596	2,121	2,141
ME	4,631	4,465	4,751	4,577	2,273	2,294
MD	2,931	2,946	3,403	3,352	2,145	2,118
MI	4,839	5,519	5,097	5,799	2,181	2,019
MN	11,295	11,673	12,003	12,373	2,199	2,093
MS	1,708	1,460	6,646	6,598	1,911	1,895
MO	4,683	4,951	6,027	6,319	2,174	2,231
NE	10,285	11,107	10,435	11,257	2,136	2,088
NY	3,266	3,268	3,485	3,531	2,382	2,294
NC	3,709	3,412	11,252	11,259	1,902	1,865
OH	27,259	29,702	27,905	30,418	2,161	2,239
OK	1,985	1,977	4,003	4,155	1,899	1,925
OR	2,664	2,645	2,828	2,814	2,192	2,239
PA	20,268	21,052	21,605	22,437	2,203	2,179
SC	3,593	4,073	4,572	5,139	2,078	2,082
SD	2,070	1,968	2,270	2,218	2,271	2,209
TX	12,872	13,303	16,759	17,395	1,927	2,098
VA	1,517	1,520	3,722	3,654	1,961	1,998
WA	4,859	4,567	4,979	4,687	2,318	2,249
WI	3,128	3,077	3,763	3,568	2,312	2,214
30 Sts	233,485	241,333	291,545	301,706	2,093	2,104
Oth Sts ²	12,201	12,315	17,621	17,863	2,009	2,099
US	245,686	253,648	309,166	319,569	2,088	2,104

¹ Includes all layers and eggs produced in both table egg and hatching egg flocks regardless of size.

² Estimates for individual States are not available.

**Egg Production: By Type, State, and United States,
May 1998-99**

State	Total Production		Table Eggs ¹		Hatching Eggs ¹	
	1998	1999 ²	1998	1999 ²	1998	1999 ²
	<i>Million Eggs</i>	<i>Million Eggs</i>	<i>Million Eggs</i>	<i>Million Eggs</i>	<i>Million Eggs</i>	<i>Million Eggs</i>
AL	214	210	94	84	120	126
AR	280	290	94	100	186	190
CA	536	532				
CO	79	76				
CT	64	67				
FL	207	225	194	213	13	12
GA	430	424	252	237	178	187
HI	13.0	13.1	13.0	13.1	0	0
IL	69	74	65	70	4	4
IN	492	490	480	478	12	12
IA	507	575				
ME	113	114				
MD	73	77	67	71	6	6
MI	111	121				
MN	274	266	263	255	11	11
MS	135	127	42	33	93	94
MO	135	150				
NE	231	239	231	239	0	0
NY	84	84				
NC	218	218	86	79	132	139
OH	618	729				
OK	81	82	47	46	34	36
OR	64	63	63	62	1	1
PA	493	513	477	495	16	18
SC	100	110	82	91	18	19
SD	54	52	54	52	0	0
TX	337	364				
VA	77	69	36	31	41	38
WA	118	108				
WI	89	84				
30 Sts	6,297	6,547	5,298	5,515	999	1,032
Oth Sts ³	368	378	286	293	82	85
US	6,665	6,925	5,584	5,808	1,081	1,117

¹ Data by type of flock not shown for some States to avoid disclosing individual operations.

² Revised.

³ Estimates for individual States are not available.

**Egg Production: By Type, State, and United States,
June 1998-99**

State	Total Production		Table Eggs ¹		Hatching Eggs ¹	
	1998	1999	1998	1999	1998	1999
	<i>Million Eggs</i>	<i>Million Eggs</i>	<i>Million Eggs</i>	<i>Million Eggs</i>	<i>Million Eggs</i>	<i>Million Eggs</i>
AL	202	203	86	77	116	126
AR	265	286	93	101	172	185
CA	538	532				
CO	72	73				
CT	63	64				
FL	200	214	188	202	12	12
GA	407	417	238	232	169	185
HI	13.0	12.5	13.0	12.5	0	0
IL	67	74	63	70	4	4
IN	485	489	473	477	12	12
IA	493	548				
ME	109	105				
MD	73	71	66	65	7	6
MI	111	117				
MN	264	259	254	249	10	10
MS	127	125	39	33	88	92
MO	131	141				
NE	223	235	223	235	0	0
NY	83	81				
NC	214	210	86	77	128	133
OH	602	681				
OK	76	80	44	44	32	36
OR	62	63	61	62	1	1
PA	476	489	461	472	15	17
SC	95	107	78	89	17	18
SD	52	49	52	49	0	0
TX	323	365				
VA	73	73	35	35	38	38
WA	115	105				
WI	87	79				
30 Sts	6,102	6,349	5,155	5,341	947	1,008
Oth Sts ²	354	375	278	293	76	82
US	6,456	6,724	5,433	5,634	1,023	1,090

¹ Data by type of flock not shown for some States to avoid disclosing individual operations.

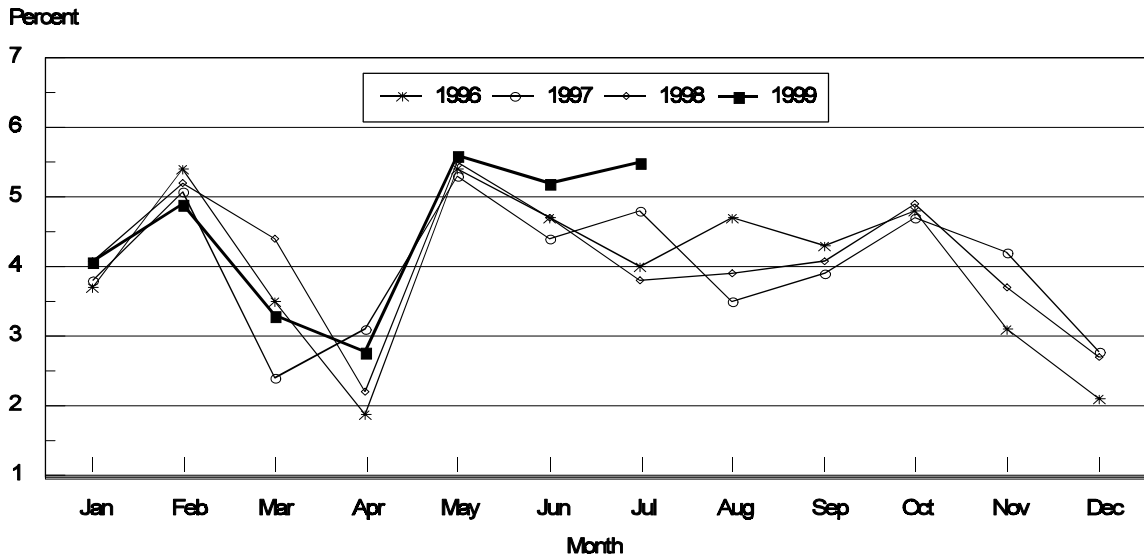
² Estimates for individual States are not available.

**Forced Molt: Percent of All Layers by Month,
United States, 1998-99¹**

Month	Percent Being Molted		Percent with Molt Completed	
	1998	1999	1998	1999
	<i>Percent</i>	<i>Percent</i>	<i>Percent</i>	<i>Percent</i>
Jan	4.1	4.1	21.8	22.5
Feb	5.2	4.9	21.0	22.1
Mar	4.4	3.3	21.2	21.8
Apr	2.2	2.8	22.1	21.7
May	5.5	5.6	20.0	21.8
Jun	4.8	5.2	21.4	21.9
Jul	3.9	5.5	21.6	22.0
Aug	3.9		21.7	
Sep	4.1		21.9	
Oct	4.9		21.9	
Nov	3.7		21.8	
Dec	2.7		23.9	

¹ As of first of month.

**All Layers : United States
Percent Being Molted, 1996 - 1999
First of Month**



1/ Previous Year

**Forced Molt: Percent of All Layers by State
and United States, July 1998-99 ¹**

State	Percent Being Molted		Percent with Molt Completed	
	1998	1999	1998	1999
	<i>Percent</i>	<i>Percent</i>	<i>Percent</i>	<i>Percent</i>
AL	1.0	3.0	10.0	13.0
AR	2.0	3.0	8.5	10.0
CA	5.5	11.0	31.0	43.0
CO	7.5	5.0	25.0	25.5
CT	0.0	3.5	13.0	6.0
FL	4.5	8.5	38.5	39.5
GA	6.0	6.0	16.5	16.5
HI	9.5	7.5	39.5	47.5
IL	0.5	1.5	29.5	26.0
IN	2.5	3.5	34.0	28.0
IA	5.0	7.5	34.0	27.0
ME	0.0	0.0	0.0	0.0
MD	4.0	10.5	25.5	39.0
MI	5.5	10.0	15.0	27.0
MN	3.5	4.5	29.0	33.5
MS	2.0	2.5	10.0	4.0
MO	1.0	15.0	16.5	16.0
NE	2.0	8.0	23.0	23.0
NY	2.5	0.0	4.5	4.0
NC	1.0	3.5	9.0	9.5
OH	3.5	2.0	13.0	14.5
OK	2.0	3.0	11.5	5.5
OR	4.0	4.5	37.5	33.0
PA	4.5	7.5	16.5	16.5
SC	8.0	6.0	30.5	19.0
SD	4.5	7.5	25.0	26.5
TX	6.0	3.0	24.0	25.0
VA	2.0	0.5	13.0	6.5
WA	4.5	6.0	29.5	46.5
WI	8.0	2.5	24.5	24.5
30 Sts	3.8	5.5	21.5	22.2
Oth Sts ²	4.9	6.4	22.1	18.9
US	3.9	5.5	21.6	22.0

¹ As of first of month.

² Estimates for individual States are not available.

**Hatchery Production: Eggs in Incubators, Chicks Hatched,
and Placements by Type, United States, June-July 1998-99**

Item	1998	1999	1999 as % of 1998
	<i>1,000</i>	<i>1,000</i>	<i>Percent</i>
Egg-Type			
Eggs in Incubators on Jul 1	31,844	31,034	97
Chicks Hatched During Jun	39,302	40,569	103
Chicks Hatched Jan thru Jun	229,879	235,828	103
Pullets Hatched During Jun for Intended Placements in Hatchery Supply Flocks	354	187	53
7-18 Month Earlier ¹	2,976	3,132	105
Broiler-Type			
Eggs in Incubators on Jul 1	609,057	628,034	103
Chicks Hatched During Jun	717,967	744,447	104
Chicks Hatched Jan thru Jun	4,252,415	4,397,214	103
Pullets Hatched During Jun for Intended Placements in Hatchery Supply Flocks	6,932	7,041	102
7-15 Months Earlier ²	58,516	62,877	107

¹ 1999 includes pullet chicks hatched Dec 1997 through Nov 1998.

² 1999 includes pullet chicks hatched Mar 1998 through Nov 1998.

**Egg-Type Eggs in Incubators: By Region and United States,
July 1, 1998-99**

Geographic Division	1998	1999	1999 as % of 1998
	<i>1,000</i>	<i>1,000</i>	<i>Percent</i>
North Atlantic	6,549	5,114	78
E North Central	8,446	7,628	90
W North Central	5,676	6,115	108
South Atlantic	3,973	3,408	86
South Central	3,049	4,336	142
West	4,151	4,433	107
US	31,844	31,034	97

Regional Listing:

North Atlantic = CT, ME, MA, NH, NJ, NY, PA, RI, VT.

E North Central = IL, IN, MI, OH, WI.

W North Central = IA, KS, MN, MO, NE, ND, SD.

South Atlantic = DE, FL, GA, MD, NC, SC, VA, WV.

South Central = AL, AR, KY, LA, MS, OK, TN, TX.

West = AK, AZ, CA, CO, HI, ID, MT, NM, NV, OR, UT, WA, WY.

**Egg-Type Chicks Hatched: By State and United States,
June 1998-99**

State	June			Jan-Jun		
	1998	1999	1999 as % of 1998	1998	1999	1999 as % of 1998
	<i>1,000</i>	<i>1,000</i>	<i>Percent</i>	<i>1,000</i>	<i>1,000</i>	<i>Percent</i>
AR	605	809	134	5,022	4,894	97
FL	1,263	1,015	80	6,962	6,591	95
GA	2,163	1,718	79	12,676	12,069	95
IN	7,282	7,672	105	42,582	44,794	105
IA	4,194	5,635	134	26,080	30,810	118
KS	136	320	235	1,481	2,018	136
MN	2,218	1,763	79	11,416	11,677	102
MO	326	360	110	2,128	2,163	102
PA	6,003	5,954	99	32,405	34,272	106
Oth Sts ¹	15,112	15,323	101	89,127	86,540	97
US	39,302	40,569	103	229,879	235,828	103

¹ Not published separately to avoid disclosing data for individual operations.

Egg-Type Chicks Hatched: By Month, United States, 1997-99

Month	By Months				Cumulative			
	1997	1998	1999	1999 as % of 1998	1997	1998	1999	1999 as % of 1998
	<i>1,000</i>	<i>1,000</i>	<i>1,000</i>	<i>Percent</i>	<i>1,000</i>	<i>1,000</i>	<i>1,000</i>	<i>Percent</i>
Jan	33,752	37,159	35,653	96	33,752	37,159	35,653	96
Feb	35,655	34,593	35,648	103	69,407	71,752	71,301	99
Mar	37,347	40,590	41,325	102	106,754	112,342	112,626	100
Apr	38,842	39,043	42,043	108	145,596	151,385	154,669	102
May	39,020	39,192	40,590	104	184,616	190,577	195,259	102
Jun	36,796	39,302	40,569	103	221,412	229,879	235,828	103
Jul	33,772	35,558			255,184	265,437		
Aug	33,061	33,380			288,245	298,817		
Sep	37,118	37,943			325,363	336,760		
Oct	35,262	34,649			360,625	371,409		
Nov	28,122	31,251			388,747	402,660		
Dec	35,796	35,733			424,543	438,393		

**Intended Placements: Egg-Type Pullet Chicks for Hatchery Supply
Flocks by Month and Total, United States, 1997-99¹**

Month	Pullet Chicks Hatched			1999 as % of 1998	Cumulative Potential Placements Relative to Current Supply Flocks 7-18 Months Earlier ²		
	1997	1998	1999		1998	1999	2000
	<i>1,000</i>	<i>1,000</i>	<i>1,000</i>	<i>Percent</i>	<i>1,000</i>	<i>1,000</i>	<i>1,000</i>
Jan	208	189	166	88	2,823	3,029	3,012
Feb	222	250	267	107	2,764	3,120	
Mar	209	225	257	114	2,863	3,020	
Apr	316	333	287	86	3,034	2,942	
May	273	192	283	147	3,057	3,044	
Jun	254	354	187	53	2,976	3,132	
Jul	207	298			2,968	3,108	
Aug	285	185			2,949	3,085	
Sep	402	324			2,977	3,102	
Oct	256	358			2,993	3,134	
Nov	129	217			3,010	3,088	
Dec	207	183			2,929	3,179	
Total	2,968	3,108					

¹ Reported by leading breeders. Coverage may not be 100 percent. Includes expected pullet chicks from eggs sold during the preceding month at the rate of 125 pullet chicks per 30 dozen case of eggs.

² For June 1999, includes breeder pullet chicks hatched Dec 1997 through Nov 1998. The 7-18 months represent the first laying cycle. Molting and additional laying cycles will increase the cumulative potential placements.

**Broiler-Type Eggs in Incubators: By Region
and United States, July 1, 1998-99**

Geographic Division	1998	1999	1999 as % of 1998
	<i>1,000</i>	<i>1,000</i>	<i>Percent</i>
North Atlantic	12,238	12,254	100
E North Central	7,987	9,148	115
W North Central	22,019	21,871	99
South Atlantic	233,341	238,027	102
South Central	308,936	321,879	104
West	24,536	24,855	101
US	609,057	628,034	103

**Broiler-Type Chicks Hatched: By State
and United States, June 1998-99**

State	June			Jan-Jun		
	1998	1999	1999 as % of 1998	1998	1999	1999 as % of 1998
	<i>1,000</i>	<i>1,000</i>	<i>Percent</i>	<i>1,000</i>	<i>1,000</i>	<i>Percent</i>
AL	94,370	97,296	103	549,724	574,468	105
AR	104,539	109,452	105	627,954	644,989	103
DE	16,516	15,875	96	96,044	94,781	99
FL	9,149	9,476	104	57,571	58,655	102
GA	108,457	111,540	103	637,741	663,209	104
MD	31,083	31,374	101	184,946	185,800	100
MS	63,174	64,815	103	376,814	385,312	102
NC	60,990	64,924	106	364,264	377,866	104
PA	12,650	12,790	101	76,067	76,940	101
SC	14,606	16,722	114	87,660	97,242	111
TX	45,516	47,689	105	269,005	287,947	107
VA	23,729	24,016	101	141,175	143,078	101
CA TN & WV	38,893	40,502	104	229,837	239,111	104
15 Sts ¹	623,672	646,471	104	3,698,802	3,829,398	104
Oth Sts ²	94,295	97,976	104	553,613	567,816	103
US	717,967	744,447	104	4,252,415	4,397,214	103

¹ States in the weekly hatchery production estimating program.

² Not published separately to avoid disclosing data for individual operations.

Broiler Chicks Hatched: By Month, United States, 1997-99

Month	By Months				Cumulative			
	1997	1998	1999	1999 as % of 1998	1997	1998	1999	1999 as % of 1998
	<i>1,000</i>	<i>1,000</i>	<i>1,000</i>	<i>Percent</i>	<i>1,000</i>	<i>1,000</i>	<i>1,000</i>	<i>Percent</i>
Jan	699,952	711,373	735,348	103	699,952	711,373	735,348	103
Feb	634,142	645,180	661,739	103	1,334,094	1,356,553	1,397,087	103
Mar	718,413	730,316	755,179	103	2,052,507	2,086,869	2,152,266	103
Apr	693,717	708,260	734,340	104	2,746,224	2,795,129	2,886,606	103
May	724,679	739,319	766,161	104	3,470,903	3,534,448	3,652,767	103
Jun	704,247	717,967	744,447	104	4,175,150	4,252,415	4,397,214	103
Jul	710,622	722,715			4,885,772	4,975,130		
Aug	708,572	715,650			5,594,344	5,690,780		
Sep	684,156	695,281			6,278,500	6,386,061		
Oct	683,185	693,189			6,961,685	7,079,250		
Nov	648,141	678,003			7,609,826	7,757,253		
Dec	711,808	737,840			8,321,634	8,495,093		

**Intended Placements: Broiler-Type Pullet Chicks for Hatchery
Supply Flocks by Month and Total, 1997-99 ¹**

Month	Pullet Chicks Hatched			1999 as % of 1998	Cumulative Potential Placements Relative to Current Supply Flocks 7-15 Months Earlier ²		
	1997	1998	1999		1998	1999	2000
	<i>1,000</i>	<i>1,000</i>	<i>1,000</i>	<i>Percent</i>	<i>1,000</i>	<i>1,000</i>	<i>1,000</i>
US Place- ments							
Jan	6,397	6,765	7,059	104	56,552	59,403	64,050
Feb	5,916	6,328	6,882	109	57,494	59,937	
Mar	6,443	6,776	7,195	106	57,677	60,699	
Apr	6,036	6,687	7,038	105	58,228	61,775	
May	7,062	7,062	7,736	110	58,085	61,893	
Jun	6,008	6,932	7,041	102	58,516	62,877	
Jul	7,167	6,788			58,325	63,005	
Aug	6,697	7,109			59,054	63,377	
Sep	6,502	7,328			58,320	63,197	
Oct	6,254	6,883			59,088	63,460	
Nov	6,347	7,312			58,608	63,710	
Dec	6,252	6,904			58,973	64,337	
Annual Total	77,081	82,874					
Total Place- ments ³							
Jan	7,547	8,613	8,679	101			
Feb	7,122	8,273	8,473	102			
Mar	7,894	8,760	8,863	101			
Apr	7,238	8,300	8,572	103			
May	8,505	8,957	9,463	106			
Jun	7,381	8,757	8,333	95			
Jul	8,460	8,423					
Aug	8,132	8,686					
Sep	8,092	8,985					
Oct	8,142	8,756					
Nov	7,973	9,412					
Dec	8,237	8,830					
Annual Total	94,723	104,752					

¹ Reported by leading breeders. Coverage may not be 100 percent. Includes expected pullet chicks from eggs sold during the preceding month at the rate of 125 pullet chicks per 30 dozen case of eggs.

² For Jun 1999, includes breeder pullet chicks hatched Mar 1998 through Nov 1998.

³ U.S. production of intended placements worldwide.

Procedures and Reliability

Data Sources: Primary data for the "**Chickens and Eggs**" report are from weekly and/or monthly questionnaires sent to producers. An attempt is made to collect information for layer and egg estimates from each known contractor and independent producer who has over 30,000 table egg layers. Coverage for operations with less than 30,000 table egg layers are estimated each month based on data reported in December. Approximately 900 contractors, independent egg producers, and started pullet operations are contacted each month. All known hatcheries, approximately 360, are contacted for information on a weekly and/or monthly basis.

Revisions: The previous month's estimates are subject to revision if late reports or corrected data indicates a different level. Additionally, revisions needed after the monthly report will be made at the end of the marketing year and published in the annual summaries of "**Layers and Egg Production**" and "**Hatchery Production**".

Procedures and Reliability: Operations are mailed a questionnaire and given adequate time to respond by mail. Those that do not respond are phoned. Great care is exercised to ensure that all operations are accounted for during each survey period. However, there are usually missing reports that must be accounted for in the estimates.

Sound statistical methodology is employed to derive estimates from the reported data. All data are checked for unusual values. All operations' data are compared to their own past operating profiles and also to trends from other operations. Data for missing operations are estimated based on similar operations or historical data. Survey data are subject to non-sampling errors such as omissions and mistakes in reporting and in processing. While these errors cannot be measured directly, they are minimized by reviewing all data for consistency and reasonableness.

Egg-type chicks hatched are comprised of all chicks of egg-type domesticated breeds including males and chicks destined for hatchery supply flocks and research purposes. The relationship of chicks hatched to chicken inventory and poultry marketings is carefully monitored. The disposition of egg-type chicks hatched prior to placement into the laying flock can vary significantly, which can make comparisons to changes in layer inventory inconsistent over time.

Intended placement data reported by leading breeders include pullet chicks expected from eggs sold the preceding month. The breeders in this report account for a large percentage of replacement pullets for hatchery supply flocks. Production of replacement pullets by these breeders indicates the number of pullets available to hatchery egg supply flocks several months before the pullets will actually move into the flocks. Beginning with the January 1996 publication the broiler-type cumulative potential placements went from 7-14 months earlier to 7-15 months earlier. The egg-type cumulative potential placements of 7-18 months represent the first laying cycle. Molting and additional laying cycles will increase the cumulative potential placements of egg-type hatching flocks.

The next "Chickens and Eggs" report will be released at 3 p.m. ET on August 24, 1999.

The United States Department of Agriculture (USDA) prohibits discrimination in all its programs on the basis of race, color, national origin, gender, religion, age, disability, political beliefs, sexual orientation, and marital or family status. (Not all prohibited bases apply to all programs.) Persons with disabilities who require alternative means for communication of program information (braille, large print, audiotape, etc.) should contact the USDA's TARGET Center at 202-720-2600 (voice and TDD).

To file a complaint of discrimination, write USDA, Director, Office of Civil Rights, Room 326-W, Whitten Building, 14th and Independence Avenue, SW, Washington, D.C., 20250-9410, or call 202-720-5964 (voice or TDD). USDA is an equal opportunity provider and employer.

ACCESS TO REPORTS!!

For your convenience, there are several ways to obtain NASS reports, data products, and services:

INTERNET ACCESS

All NASS reports are available free of charge on the worldwide Internet. For access, connect to the Internet and go to the NASS Home Page at: <http://www.usda.gov/nass/>. Select "Today's Reports" or Publications and then Reports by Calendar or Publications and then Search, by Title or Subject.

E-MAIL SUBSCRIPTION

There are two options for subscribing via e-mail. All NASS reports are available by subscription free of charge direct to your e-mail address. 1) Starting with the NASS Home Page at <http://www.usda.gov/nass/>, click on **Publications**, then click on the **Subscribe by E-mail** button which takes you to the page describing e-mail delivery of reports. Finally, click on **Go to the Subscription Page** and follow the instructions. 2) If you do NOT have Internet access, send an e-mail message to: usda-reports@usda.mannlib.cornell.edu. In the body of the message type the word: **list**.

AUTOFAX ACCESS

NASSFax service is available for some reports from your fax machine. Please call 202-720-2000, using the handset attached to your fax. Respond to the voice prompts. Document 0411 is a list of available reports.

PRINTED REPORTS OR DATA PRODUCTS

CALL OUR TOLL-FREE ORDER DESK: 800-999-6779 (U.S. and Canada)
Other areas, please call 703-834-0125 FAX: 703-834-0110
(Visa, MasterCard, check, or money order acceptable for payment.)

ASSISTANCE

For **assistance** with general agricultural statistics or further information about NASS or its products or services, contact the **Agricultural Statistics Hotline** at **800-727-9540**, 7:30 a.m. to 4:00 p.m. ET, or e-mail: nass@nass.usda.gov.