

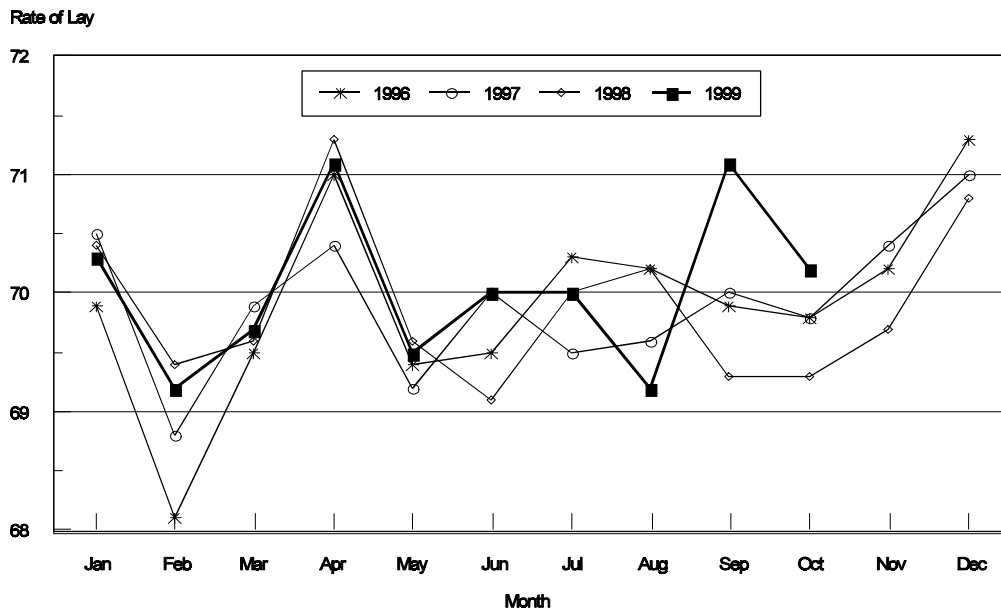
Chickens and Eggs

Released October 22, 1999, by the National Agricultural Statistics Service (NASS), Agricultural Statistics Board, U.S. Department of Agriculture. For information on "Chickens and Eggs" call Tom Kruchten at (202) 690-4870, office hours 7:30 a.m. to 4:00 p.m. ET.

September Egg Production Up 6 Percent

U.S. egg production totaled 6.85 billion during September 1999, up 6 percent from the 6.48 billion produced in 1998. Production included 5.79 billion table eggs and 1.06 billion hatching eggs, of which 999 million were broiler-type and 61.0 million were egg-type. The total number of layers during September 1999 averaged 322 million, up 4 percent from the total average number of layers during September 1998. September egg production per 100 layers was 2,126 eggs, up 2 percent from 2,082 eggs in September 1998.

All Layers: 1st of Month Rate of Lay United States, 1996 - 1999 Eggs Per 100 Layers



-Special Note-

Effective January 2000, the annual summary title will change from "Layers and Egg Production Summary" to "Chickens and Eggs Summary."

All layers in the U.S. on October 1, 1999, totaled 323 million, up 3 percent from a year ago. The 323 million layers consisted of 265 million layers producing table or commercial type eggs, 55.3 million layers producing broiler-type hatching eggs, and 2.72 million layers producing egg-type hatching eggs. Rate of lay per day on October 1, 1999, averaged 70.2 eggs per 100 layers, up 1 percent from the 69.3 a year ago.

Laying flocks in the 30 major egg producing States produced 6.44 billion eggs during September, up 5 percent from September 1998. The average number of layers during September, at 303 million, was up 3 percent from a year earlier.

Individual State estimates are available for the 30 major egg producing States. These States are listed on page 8 of this release and account for approximately 94 percent of the total U.S. egg production. Production for the other States are grouped into an "Other States" category and combined with the 30 States published individually to obtain a U.S. estimate. Individual State estimates' for "Other States" are available annually in the "**Layers and Egg Production**" report.

Egg-Type Chicks Hatched Up 2 Percent

Egg-type chicks **hatched** during September totaled 38.8 million, up 2 percent from September 1998. **Eggs in incubators** totaled 35.3 million on October 1, 1999, up 10 percent from a year ago.

Domestic placements of **egg-type pullet chicks for future hatchery supply flocks** by leading breeders totaled 227,000 during September 1999, down 30 percent from September 1998.

Broiler Hatch Up 1 Percent

The September 1999 **hatch** of broiler-type chicks, at 700 million, was up 1 percent from September of the previous year. There were 587 million **eggs in incubators** on October 1, 1999, up 1 percent from a year earlier.

Leading breeders placed 6.87 million **broiler-type pullet chicks for future domestic hatchery supply flocks** during September 1999, down 6 percent from September 1998.

**All Layers: Average Number on Hand During the Month,
United States, 1996-99**

Month	1996	1997	1998	1999
	<i>1,000 Layers</i>	<i>1,000 Layers</i>	<i>1,000 Layers</i>	<i>1,000 Layers</i>
Dec ¹	299,345	304,463	311,888	321,193
Jan	299,230	304,289	311,876	322,136
Feb	298,904	304,000	313,245	322,754
Mar	298,853	304,285	314,101	322,516
Apr	297,493	303,618	311,917	320,917
May	295,516	302,241	309,615	319,851
Jun	294,837	300,537	309,166	320,091
Jul	296,290	299,605	308,927	319,791
Aug	297,804	300,211	309,251	320,166
Sep	298,582	303,661	311,278	322,245
Oct	300,052	306,807	314,847	
Nov	302,386	309,670	318,797	

¹ December preceding year.

**Eggs: Production During the Month by Type,
United States, 1998-99**

Month	Total Eggs		Table Eggs		Hatching Eggs	
	1998	1999	1998	1999	1998	1999
	<i>Million Eggs</i>	<i>Million Eggs</i>	<i>Million Eggs</i>	<i>Million Eggs</i>	<i>Million Eggs</i>	<i>Million Eggs</i>
Dec ¹	6,841	7,029	5,802	5,957	1,039	1,072
Jan	6,766	6,971	5,720	5,890	1,046	1,081
Feb	6,109	6,282	5,150	5,296	959	986
Mar	6,869	7,043	5,797	5,934	1,072	1,109
Apr	6,603	6,769	5,556	5,693	1,047	1,076
May	6,665	6,925	5,584	5,808	1,081	1,117
Jun	6,456	6,734	5,433	5,644	1,023	1,090
Jul	6,720	6,903	5,674	5,797	1,046	1,106
Aug	6,694	6,970	5,655	5,875	1,039	1,095
Sep	6,480	6,850	5,480	5,788	1,000	1,062
Oct	6,791		5,746		1,045	
Nov	6,723		5,695		1,028	
During Year	79,717	68,476	67,292	57,682	12,425	10,794

¹ December preceding year.

**Layers and Eggs: Layers on Hand and Eggs Produced by Type,
and Forced Molt, United States, August-September 1998-99 ¹**

Item	Unit	1998	1999	1999 as % of 1998
Layers During Aug	1,000			
All Layers		309,251	320,166	104
Table Egg Type		252,141	261,429	104
Hatching Egg Type		57,110	58,737	103
Broiler-Type Hatching		54,570	55,987	103
Egg-Type Hatching		2,540	2,750	108
Eggs per 100 Layers During Aug	Number			
All Layers		2,165	2,177	101
Table Egg Type		2,243	2,247	100
Hatching Egg Type		1,819	1,864	102
Broiler-Type Hatching		1,796	1,840	102
Egg-Type Hatching		2,323	2,364	102
Eggs Produced During Aug	Million			
All Layers		6,694	6,970	104
Table Egg Type		5,655	5,875	104
Hatching Egg Type		1,039	1,095	105
Broiler-Type Hatching		980	1,030	105
Egg-Type Hatching		59	65	110
Layers on Sep 1	1,000			
All Layers		309,706	321,375	104
Table Egg Type		252,876	262,879	104
Hatching Egg Type		56,830	58,496	103
Broiler-Type Hatching		54,286	55,813	103
Egg-Type Hatching		2,544	2,683	105
Eggs per 100 Layers on Sep 1	Number			
All Layers		69.3	71.1	103
Table Egg Type		71.7	73.5	103
Hatching Egg Type		58.5	60.4	103
Broiler-Type Hatching		57.7	59.6	103
Egg-Type Hatching		74.5	76.4	103
Forced Molt Layers on Sep 1	Percent			
Percent Being Molted		4.1	4.3	105
Percent with Molt Completed		21.9	22.2	101
Layers Sold for Slaughter During Aug	1,000	14,957	16,865	113
Layers Rendered, Died, Destroyed, Composted or Disappeared For Any Reason During Aug	1,000	3,666	4,492	123
Pullets Less Than 20 Weeks of Age, Sep 1	1,000	94,217	98,062	104
Pullets Added During Aug ²	1,000	20,113	22,739	113

¹ Revised.

² Pullet chicks one day old added to pullet flocks.

**Layers and Eggs: Layers on Hand and Eggs Produced by Type,
and Forced Molt, United States, September-October 1998-99**

Item	Unit	1998 ¹	1999	1999 as % of 1998
Layers During Sep	1,000			
All Layers		311,278	322,245	104
Table Egg Type		254,597	263,973	104
Hatching Egg Type		56,681	58,272	103
Broiler-Type Hatching		54,162	55,568	103
Egg-Type Hatching		2,519	2,704	107
Eggs per 100 Layers During Sep	Number			
All Layers		2,082	2,126	102
Table Egg Type		2,152	2,193	102
Hatching Egg Type		1,764	1,822	103
Broiler-Type Hatching		1,739	1,798	103
Egg-Type Hatching		2,303	2,256	98
Eggs Produced During Sep	Million			
All Layers		6,480	6,850	106
Table Egg Type		5,480	5,788	106
Hatching Egg Type		1,000	1,062	106
Broiler-Type Hatching		942	999	106
Egg-Type Hatching		58	61	105
Layers on Oct 1	1,000			
All Layers		312,807	323,065	103
Table Egg Type		256,295	265,040	103
Hatching Egg Type		56,512	58,025	103
Broiler-Type Hatching		54,027	55,310	102
Egg-Type Hatching		2,485	2,715	109
Eggs per 100 Layers on Oct 1	Number			
All Layers		69.3	70.2	101
Table Egg Type		71.6	72.3	101
Hatching Egg Type		59.0	60.7	103
Broiler-Type Hatching		58.1	60.0	103
Egg-Type Hatching		76.9	75.9	99
Forced Molt Layers, Oct 1	Percent			
Percent Being Molted		4.9	4.1	84
Percent with Molt Completed		21.9	22.7	104
Layers Sold for Slaughter During Sep	1,000	15,352	17,030	111
Layers Rendered, Died, Destroyed, Composted or Disappeared For Any Reason During Sep	1,000	3,251	3,582	110
Pullets Less Than 20 Weeks of Age, Oct 1	1,000	94,615	96,788	102
Pullets Added During Sep ²	1,000	22,146	21,401	97

¹ Revised.

² Pullet chicks one day old added to pullet flocks.

Layers and Eggs: Layers on Hand and Eggs Produced by Type, and Forced Molt, 30 Selected States, August-September, 1998-99^{1 2}

Item	Unit	1998	1999	1999 as % of 1998
Layers During Aug	1,000			
All Layers		291,609	301,061	103
Table Egg Type		238,781	246,885	103
Hatching Egg Type		52,828	54,176	103
Broiler-Type Hatching		50,405	51,535	102
Egg-Type Hatching		2,423	2,641	109
Eggs per 100 Layers During Aug	Number			
All Layers		2,167	2,175	100
Table Egg Type		2,244	2,243	100
Hatching Egg Type		1,817	1,864	103
Broiler-Type Hatching		1,793	1,840	103
Egg-Type Hatching		2,311	2,348	102
Eggs Produced During Aug	Million			
All Layers		6,318	6,548	104
Table Egg Type		5,358	5,538	103
Hatching Egg Type		960	1,010	105
Broiler-Type Hatching		904	948	105
Egg-Type Hatching		56	62	111
Layers on Sep 1	1,000			
All Layers		292,079	302,201	103
Table Egg Type		239,501	248,245	104
Hatching Egg Type		52,578	53,956	103
Broiler-Type Hatching		50,151	51,373	102
Egg-Type Hatching		2,427	2,583	106
Eggs per 100 Layers on Sep 1	Number			
All Layers		69.3	71.1	103
Table Egg Type		71.7	73.4	102
Hatching Egg Type		58.4	60.3	103
Broiler-Type Hatching		57.6	59.5	103
Egg-Type Hatching		74.4	76.2	102
Forced Molt Layers on Sep 1	Percent			
Percent Being Molted		4.2	4.5	107
Percent with Molt Completed		21.7	22.3	103
Layers Sold for Slaughter During Aug	1,000	14,301	15,838	111
Layers Rendered, Died, Destroyed, Composted or Disappeared For Any Reason During Aug	1,000	3,469	4,306	124
Pullets Less Than 20 Weeks of Age, Sep 1	1,000	89,506	92,280	103
Pullets Added During Aug ³	1,000	19,313	21,218	110

¹ The 30 States are listed in the table on page 8.

² Revised.

³ Pullet chicks one day old added to pullet flocks.

Layers and Eggs: Layers on Hand and Eggs Produced by Type, and Forced Molt, 30 Selected States, September-October, 1998-99 ¹

Item	Unit	1998 ²	1999	1999 as % of 1998
Layers During Sep	1,000			
All Layers		293,786	302,897	103
Table Egg Type		241,335	249,106	103
Hatching Egg Type		52,451	53,791	103
Broiler-Type Hatching		50,041	51,187	102
Egg-Type Hatching		2,410	2,604	108
Eggs per 100 Layers During Sep	1,000			
All Layers		2,081	2,124	102
Table Egg Type		2,151	2,191	102
Hatching Egg Type		1,762	1,814	103
Broiler-Type Hatching		1,737	1,791	103
Egg-Type Hatching		2,282	2,266	99
Eggs Produced During Sep	Million			
All Layers		6,114	6,435	105
Table Egg Type		5,190	5,459	105
Hatching Egg Type		924	976	106
Broiler-Type Hatching		869	917	106
Egg-Type Hatching		55	59	107
Layers on Oct 1	1,000			
All Layers		295,458	303,556	103
Table Egg Type		243,152	249,948	103
Hatching Egg Type		52,306	53,608	102
Broiler-Type Hatching		49,921	50,990	102
Egg-Type Hatching		2,385	2,618	110
Eggs per 100 Layers on Oct 1	Number			
All Layers		69.3	70.5	102
Table Egg Type		71.5	72.6	102
Hatching Egg Type		59.0	60.4	102
Broiler-Type Hatching		58.1	59.6	103
Egg-Type Hatching		76.9	76.1	99
Forced Molt Layers, Oct 1	Percent			
Percent Being Molted		4.9	4.2	86
Percent with Molt Completed		21.7	22.9	106
Layers Sold for Slaughter During Sep	1,000	14,573	16,219	111
Layers Rendered, Died, Destroyed, Composted or Disappeared For Any Reason During Sep	1,000	3,106	3,418	110
Pullets Less Than 20 Weeks of Age, Oct 1	1,000	89,929	90,797	101
Pullets Added During Sep ³	1,000	21,585	20,060	93

¹ The 30 States are listed in the table on page 8.

² Revised.

³ Pullet chicks one day old added to pullet flocks.

**Layers and Eggs: Layers on Hand and Eggs Produced by State
and United States, During August 1998-99**

State	Table Egg Layers in Flocks 30,000 and Above		All Layers ¹		Eggs per 100 for All Layers ¹	
	1998	1999 ²	1998	1999 ²	1998	1999 ²
	<i>1,000</i>	<i>1,000</i>	<i>1,000</i>	<i>1,000</i>	<i>Number</i>	<i>Number</i>
AL	4,168	3,472	11,015	10,769	1,888	1,904
AR	4,441	4,954	14,554	15,173	1,814	1,931
CA	24,098	24,148	24,815	24,845	2,253	2,198
CO	3,018	3,036	3,610	3,568	2,216	2,186
CT	2,644	2,822	2,805	3,003	2,424	2,298
FL	9,054	9,763	9,696	10,507	2,094	2,160
GA	11,853	11,006	21,022	20,386	2,007	2,046
HI	576	577	601	606	2,163	1,964
IL	2,717	3,087	3,005	3,345	2,311	2,242
IN	21,087	21,141	21,823	21,885	2,314	2,262
IA	22,135	25,156	23,035	26,114	2,210	2,240
ME	4,516	4,511	4,645	4,627	2,433	2,421
MD	2,717	2,541	3,149	2,875	2,191	2,191
MI	5,260	5,548	5,541	5,827	2,240	2,351
MN	11,323	11,708	12,036	12,384	2,168	2,188
MS	1,785	1,660	6,869	6,762	1,922	1,937
MO	5,107	4,844	6,465	6,219	2,243	2,187
NE	10,271	11,143	10,421	11,293	2,178	2,116
NY	3,233	3,346	3,452	3,599	2,404	2,362
NC	3,707	3,470	11,209	11,058	1,882	1,926
OH	26,951	30,004	27,529	30,673	2,223	2,269
OK	2,013	1,996	3,939	4,055	1,932	2,022
OR	2,568	2,682	2,731	2,837	2,234	2,217
PA	20,280	21,034	21,564	22,395	2,328	2,286
SC	3,557	3,873	4,560	4,910	2,149	2,159
SD	2,070	1,913	2,275	2,158	2,330	2,363
TX	13,083	13,035	16,817	17,029	2,188	2,196
VA	1,399	1,489	3,591	3,638	2,033	2,007
WA	4,929	4,616	5,049	4,736	2,365	2,352
WI	3,141	3,296	3,786	3,785	2,351	2,404
30 Sts	233,701	241,871	291,609	301,061	2,167	2,175
Oth Sts ³	12,236	13,498	17,642	19,105	2,131	2,209
US	245,937	255,369	309,251	320,166	2,165	2,177

¹ Includes all layers and eggs produced in both table egg and hatching egg flocks regardless of size.

² Revised.

³ Estimates for individual States are not available.

**Layers and Eggs: Layers on Hand and Eggs Produced by State
and United States, During September 1998-99**

State	Table Egg Layers in Flocks 30,000 and Above		All Layers ¹		Eggs per 100 for All Layers ¹	
	1998	1999	1998	1999	1998	1999
	<i>1,000</i>	<i>1,000</i>	<i>1,000</i>	<i>1,000</i>	<i>Number</i>	<i>Number</i>
AL	4,381	3,475	11,088	10,702	1,831	1,841
AR	4,343	4,933	14,493	15,205	1,739	1,907
CA	24,581	24,692	25,283	25,396	2,136	2,170
CO	3,009	3,112	3,601	3,643	2,111	2,223
CT	2,734	2,863	2,897	3,039	2,278	2,205
FL	9,219	9,764	9,897	10,497	1,940	2,067
GA	11,795	11,406	20,974	20,689	1,940	2,020
HI	604	571	629	599	2,067	1,987
IL	2,686	3,371	2,962	3,640	2,161	2,308
IN	21,341	21,260	22,040	21,955	2,219	2,200
IA	22,383	25,293	23,265	26,258	2,102	2,236
ME	4,620	4,551	4,755	4,670	2,376	2,313
MD	2,881	2,648	3,303	2,992	2,119	2,072
MI	5,304	5,571	5,586	5,847	2,150	2,206
MN	11,323	11,738	12,033	12,416	2,186	2,102
MS	2,000	1,719	7,071	6,815	1,853	1,864
MO	5,510	4,800	6,915	6,205	2,126	2,192
NE	10,163	11,240	10,313	11,390	2,143	2,090
NY	3,220	3,391	3,448	3,659	2,291	2,268
NC	3,695	3,549	11,050	10,929	1,837	1,894
OH	27,293	30,086	27,865	30,739	2,168	2,193
OK	2,041	1,989	3,946	4,024	1,901	1,938
OR	2,526	2,690	2,687	2,844	2,084	2,141
PA	20,367	21,131	21,639	22,477	2,218	2,251
SC	3,532	3,772	4,544	4,790	2,113	2,150
SD	2,063	1,894	2,268	2,135	2,205	2,295
TX	13,117	13,176	16,791	17,169	2,067	2,114
VA	1,515	1,505	3,659	3,626	1,940	1,903
WA	4,942	4,635	5,062	4,755	2,260	2,259
WI	3,067	3,303	3,722	3,792	2,203	2,294
30 Sts	236,255	244,128	293,786	302,897	2,081	2,124
Oth Sts ²	12,140	13,818	17,492	19,348	2,092	2,145
US	248,395	257,946	311,278	322,245	2,082	2,126

¹ Includes all layers and eggs produced in both table egg and hatching egg flocks regardless of size.

² Estimates for individual States are not available.

**Egg Production: By Type, State, and United States,
August 1998-99**

State	Total Production		Table Eggs ¹		Hatching Eggs ¹	
	1998	1999 ²	1998	1999 ²	1998	1999 ²
	<i>Million Eggs</i>	<i>Million Eggs</i>	<i>Million Eggs</i>	<i>Million Eggs</i>	<i>Million Eggs</i>	<i>Million Eggs</i>
AL	208	205	86	75	122	130
AR	264	293	91	107	173	186
CA	559	546				
CO	80	78				
CT	68	69				
FL	203	227	191	214	12	13
GA	422	417	247	234	175	183
HI	13.0	11.9	13.0	11.9	0	0
IL	70	75	66	72	4	3
IN	505	495	493	482	12	13
IA	509	585				
ME	113	112				
MD	69	63	62	57	7	6
MI	124	137				
MN	261	271	251	261	10	10
MS	132	131	44	39	88	92
MO	145	136				
NE	227	239	227	239	0	0
NY	83	85				
NC	211	213	81	81	130	132
OH	612	696				
OK	76	82	45	47	31	35
OR	61	63	60	62	1	1
PA	502	512	488	496	14	16
SC	98	106	81	88	17	18
SD	53	51	53	51	0	0
TX	368	374				
VA	73	73	35	33	38	40
WA	119	111				
WI	89	91				
30 Sts	6,318	6,548	5,358	5,538	960	1,010
Oth Sts ³	376	422	297	337	79	85
US	6,694	6,970	5,655	5,875	1,039	1,095

¹ Data by type of flock not shown for some States to avoid disclosing individual operations.

² Revised.

³ Estimates for individual States are not available.

**Egg Production: By Type, State, and United States,
September 1998-99**

State	Total Production		Table Eggs ¹		Hatching Eggs ¹	
	1998	1999	1998	1999	1998	1999
	<i>Million Eggs</i>	<i>Million Eggs</i>	<i>Million Eggs</i>	<i>Million Eggs</i>	<i>Million Eggs</i>	<i>Million Eggs</i>
AL	203	197	88	71	115	126
AR	252	290	83	105	169	185
CA	540	551				
CO	76	81				
CT	66	67				
FL	192	217	180	205	12	12
GA	407	418	239	242	168	176
HI	13.0	11.9	13.0	11.9	0	0
IL	64	84	60	81	4	3
IN	489	483	478	472	11	11
IA	489	587				
ME	113	108				
MD	70	62	63	56	7	6
MI	120	129				
MN	263	261	253	251	10	10
MS	131	127	45	38	86	89
MO	147	136				
NE	221	238	221	238	0	0
NY	79	83				
NC	203	207	81	82	122	125
OH	604	674				
OK	75	78	45	45	30	33
OR	56	61	55	60	1	1
PA	480	506	467	491	13	15
SC	96	103	79	86	17	17
SD	50	49	50	49	0	0
TX	347	363				
VA	71	69	34	33	37	36
WA	114	107				
WI	82	87				
30 Sts	6,114	6,435	5,190	5,459	924	976
Oth Sts ²	366	415	290	329	76	86
US	6,480	6,850	5,480	5,788	1,000	1,062

¹ Data by type of flock not shown for some States to avoid disclosing individual operations.

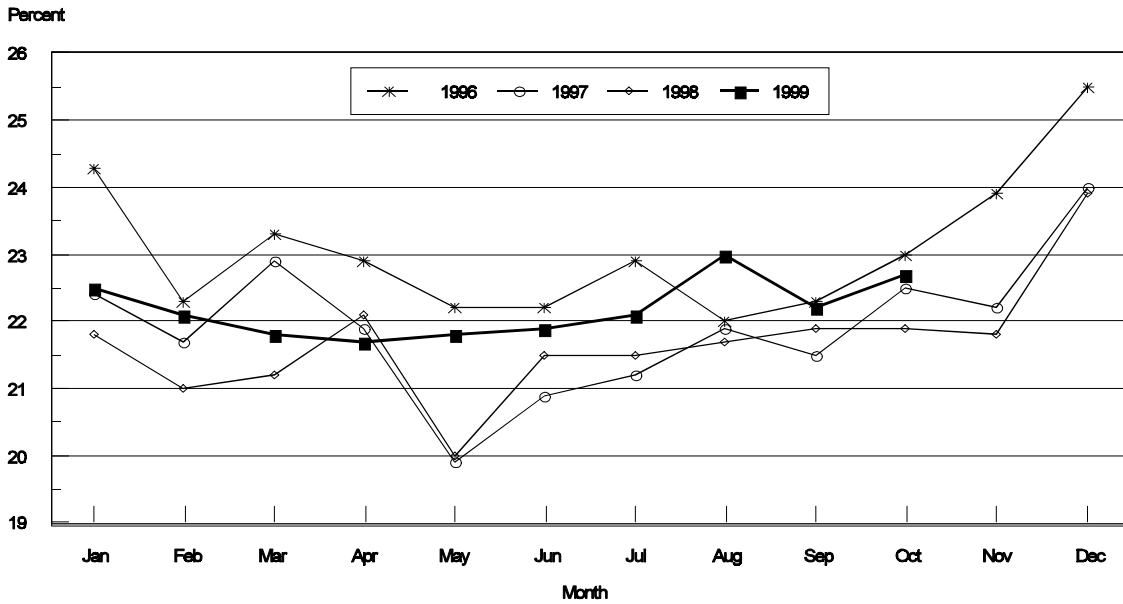
² Estimates for individual States are not available.

**Forced Molt: Percent of All Layers by Month,
United States, 1998-99¹**

Month	Percent Being Molted		Percent with Molt Completed	
	1998	1999	1998	1999
	<i>Percent</i>	<i>Percent</i>	<i>Percent</i>	<i>Percent</i>
Jan	4.1	4.1	21.8	22.5
Feb	5.2	4.9	21.0	22.1
Mar	4.4	3.3	21.2	21.8
Apr	2.2	2.8	22.1	21.7
May	5.5	5.6	20.0	21.8
Jun	4.8	5.2	21.4	21.9
Jul	3.9	5.5	21.6	22.1
Aug	3.9	4.6	21.7	23.0
Sep	4.1	4.3	21.9	22.2
Oct	4.9	4.1	21.9	22.7
Nov	3.7		21.8	
Dec	2.7		23.9	

¹ As of first of month.

**All Layers: United States
Percent Molt Completed, 1996 - 1999
First of Month**



**Forced Molt: Percent of All Layers by State
and United States, October 1998-99 ¹**

State	Percent Being Molted		Percent with Molt Completed	
	1998	1999	1998	1999
	<i>Percent</i>	<i>Percent</i>	<i>Percent</i>	<i>Percent</i>
AL	1.5	3.5	12.5	12.5
AR	3.0	1.5	7.5	10.0
CA	9.5	6.5	30.5	41.5
CO	5.0	0.0	29.0	21.0
CT	2.0	3.5	12.0	9.0
FL	11.5	6.5	41.0	30.5
GA	5.0	3.5	18.5	17.0
HI	7.5	9.5	43.0	43.5
IL	14.5	1.5	24.5	21.5
IN	4.0	3.0	32.5	27.0
IA	6.5	5.5	33.0	31.0
ME	0.0	0.0	0.5	0.0
MD	4.5	11.0	33.5	35.0
MI	6.0	3.5	19.5	28.0
MN	3.0	3.5	27.5	33.0
MS	4.0	2.0	5.5	12.0
MO	2.5	2.0	15.0	27.5
NE	0.0	9.0	22.5	28.0
NY	1.0	0.0	5.0	6.0
NC	2.5	3.0	9.0	8.0
OH	5.0	2.0	12.5	13.5
OK	1.0	1.0	11.0	8.0
OR	17.0	7.0	42.5	32.5
PA	3.0	5.5	18.0	22.0
SC	3.5	5.0	30.5	26.0
SD	3.0	4.0	27.5	31.5
TX	6.0	5.5	24.0	24.5
VA	8.0	6.5	6.0	8.0
WA	3.5	6.5	35.5	42.0
WI	8.5	3.5	29.5	17.0
30 Sts	4.9	4.2	21.7	22.9
Oth Sts ²	4.7	3.8	24.5	20.3
US	4.9	4.1	21.9	22.7

¹ As of first of month.

² Estimates for individual States are not available.

**Hatchery Production: Eggs in Incubators, Chicks Hatched,
and Placements by Type, United States, September-October 1998-99**

Item	1998	1999	1999 as % of 1998
	<i>1,000</i>	<i>1,000</i>	<i>Percent</i>
Egg-Type			
Eggs in Incubators on Oct 1	32,203	35,279	110
Chicks Hatched During Sep	37,943	38,841	102
Chicks Hatched Jan thru Sep	336,760	344,391	102
Pullets Hatched During Sep for Intended Placements in Hatchery Supply Flocks 7-18 Month Earlier ¹	324 2,977	227 3,102	70 104
Broiler-Type			
Eggs in Incubators on Oct 1	583,859	586,818	101
Chicks Hatched During Sep	695,281	699,664	101
Chicks Hatched Jan thru Sep	6,386,061	6,588,678	103
Pullets Hatched During Sep for Intended Placements in Hatchery Supply Flocks 7-15 Months Earlier ²	7,328 58,320	6,870 63,197	94 108

¹ 1999 includes pullet chicks hatched Mar 1998 through Feb 1999.

² 1999 includes pullet chicks hatched Jun 1998 through Feb 1999.

**Egg-Type Eggs in Incubators: By Region and United States,
October 1, 1998-99**

Geographic Division	1998	1999	1999 as % of 1998
	<i>1,000</i>	<i>1,000</i>	<i>Percent</i>
North Atlantic	7,203	6,790	94
E North Central	7,039	9,168	130
W North Central	6,298	6,405	102
South Atlantic	4,651	3,145	68
South Central	3,158	4,252	135
West	3,854	5,519	143
US	32,203	35,279	110

Regional Listing:

North Atlantic = CT, ME, MA, NH, NJ, NY, PA, RI, VT.

E North Central = IL, IN, MI, OH, WI.

W North Central = IA, KS, MN, MO, NE, ND, SD.

South Atlantic = DE, FL, GA, MD, NC, SC, VA, WV.

South Central = AL, AR, KY, LA, MS, OK, TN, TX.

West = AK, AZ, CA, CO, HI, ID, MT, NM, NV, OR, UT, WA, WY.

**Egg-Type Chicks Hatched: By State and United States,
September 1998-99**

State	September			Jan-Sep		
	1998	1999	1999 as % of 1998	1998	1999	1999 as % of 1998
	<i>1,000</i>	<i>1,000</i>	<i>Percent</i>	<i>1,000</i>	<i>1,000</i>	<i>Percent</i>
AR	837	908	108	7,402	7,388	100
FL	1,158	1,156	100	9,494	9,877	104
GA	1,884	1,811	96	18,586	17,607	95
IN	7,457	7,296	98	63,648	64,024	101
IA	4,275	4,901	115	39,281	43,935	112
KS	168	267	159	2,203	2,867	130
MN	2,016	1,716	85	16,712	16,452	98
MO	315	315	100	3,115	3,150	101
PA	6,386	5,329	83	48,206	49,131	102
Oth Sts ¹	13,447	15,142	113	128,113	129,960	101
US	37,943	38,841	102	336,760	344,391	102

¹ Not published separately to avoid disclosing data for individual operations.

Egg-Type Chicks Hatched: By Month, United States, 1997-99

Month	By Months				Cumulative			
	1997	1998	1999	1999 as % of 1998	1997	1998	1999	1999 as % of 1998
	<i>1,000</i>	<i>1,000</i>	<i>1,000</i>	<i>Percent</i>	<i>1,000</i>	<i>1,000</i>	<i>1,000</i>	<i>Percent</i>
Jan	33,752	37,159	35,653	96	33,752	37,159	35,653	96
Feb	35,655	34,593	35,648	103	69,407	71,752	71,301	99
Mar	37,347	40,590	41,325	102	106,754	112,342	112,626	100
Apr	38,842	39,043	42,043	108	145,596	151,385	154,669	102
May	39,020	39,192	40,590	104	184,616	190,577	195,259	102
Jun	36,796	39,302	40,569	103	221,412	229,879	235,828	103
Jul	33,772	35,558	34,269	96	255,184	265,437	270,097	102
Aug	33,061	33,380	35,453	106	288,245	298,817	305,550	102
Sep	37,118	37,943	38,841	102	325,363	336,760	344,391	102
Oct	35,262	34,649			360,625	371,409		
Nov	28,122	31,251			388,747	402,660		
Dec	35,796	35,733			424,543	438,393		

**Intended Placements: Egg-Type Pullet Chicks for Hatchery Supply
Flocks by Month and Total, United States, 1997-99 ¹**

Month	Pullet Chicks Hatched			1999 as % of 1998	Cumulative Potential Placements Relative to Current Supply Flocks 7-18 Months Earlier ²		
	1997	1998	1999		1998	1999	2000
	<i>1,000</i>	<i>1,000</i>	<i>1,000</i>	<i>Percent</i>	<i>1,000</i>	<i>1,000</i>	<i>1,000</i>
Jan	208	189	166	88	2,823	3,029	3,012
Feb	222	250	267	107	2,764	3,120	2,945
Mar	209	225	257	114	2,863	3,020	3,078
Apr	316	333	287	86	3,034	2,942	2,981
May	273	192	283	147	3,057	3,044	
Jun	254	354	187	53	2,976	3,132	
Jul	207	298	231	78	2,968	3,108	
Aug	285	185	318	172	2,949	3,085	
Sep	402	324	227	70	2,977	3,102	
Oct	256	358			2,993	3,134	
Nov	129	217			3,010	3,088	
Dec	207	183			2,929	3,179	
Total	2,968	3,108					

¹ Reported by leading breeders. Coverage may not be 100 percent. Includes expected pullet chicks from eggs sold during the preceding month at the rate of 125 pullet chicks per 30 dozen case of eggs.

² For September 1999, includes breeder pullet chicks hatched Mar 1998 through Feb 1999. The 7-18 months represent the first laying cycle. Molting and additional laying cycles will increase the cumulative potential placements.

**Broiler-Type Eggs in Incubators: By Region
and United States, October 1, 1998-99**

Geographic Division	1998	1999	1999 as % of 1998
	<i>1,000</i>	<i>1,000</i>	<i>Percent</i>
North Atlantic	11,564	11,153	96
E North Central	8,273	8,308	100
W North Central	21,177	19,430	92
South Atlantic	221,970	219,276	99
South Central	299,457	306,287	102
West	21,418	22,364	104
US	583,859	586,818	101

**Broiler-Type Chicks Hatched: By State
and United States, September 1998-99**

State	September			Jan-Sep		
	1998	1999	1999 as % of 1998	1998	1999	1999 as % of 1998
	<i>1,000</i>	<i>1,000</i>	<i>Percent</i>	<i>1,000</i>	<i>1,000</i>	<i>Percent</i>
AL	90,332	91,375	101	829,652	862,489	104
AR	99,684	103,253	104	933,493	965,681	103
DE	14,830	15,275	103	143,468	142,634	99
FL	8,577	9,081	106	83,824	87,357	104
GA	105,975	104,109	98	963,952	992,461	103
MD	30,826	28,196	91	278,986	276,557	99
MS	62,095	60,715	98	566,291	577,745	102
NC	58,009	60,507	104	547,302	566,121	103
PA	12,532	12,357	99	114,304	115,237	101
SC	14,811	15,937	108	133,057	146,937	110
TX	44,570	46,320	104	405,838	430,643	106
VA	22,691	22,775	100	212,339	214,755	101
CA TN & WV	37,839	38,903	103	345,549	359,985	104
15 Sts ¹	602,771	608,803	101	5,558,055	5,738,602	103
Oth Sts ²	92,510	90,861	98	828,006	850,076	103
US	695,281	699,664	101	6,386,061	6,588,678	103

¹ States in the weekly hatchery production estimating program.

² Not published separately to avoid disclosing data for individual operations.

Broiler Chicks Hatched: By Month, United States, 1997-99

Month	By Months				Cumulative			
	1997	1998	1999	1999 as % of 1998	1997	1998	1999	1999 as % of 1998
	<i>1,000</i>	<i>1,000</i>	<i>1,000</i>	<i>Percent</i>	<i>1,000</i>	<i>1,000</i>	<i>1,000</i>	<i>Percent</i>
Jan	699,952	711,373	735,348	103	699,952	711,373	735,348	103
Feb	634,142	645,180	661,739	103	1,334,094	1,356,553	1,397,087	103
Mar	718,413	730,316	755,179	103	2,052,507	2,086,869	2,152,266	103
Apr	693,717	708,260	734,340	104	2,746,224	2,795,129	2,886,606	103
May	724,679	739,319	766,161	104	3,470,903	3,534,448	3,652,767	103
Jun	704,247	717,967	744,447	104	4,175,150	4,252,415	4,397,214	103
Jul	710,622	722,715	750,547	104	4,885,772	4,975,130	5,147,761	103
Aug	708,572	715,650	741,253	104	5,594,344	5,690,780	5,889,014	103
Sep	684,156	695,281	699,664	101	6,278,500	6,386,061	6,588,678	103
Oct	683,185	693,189			6,961,685	7,079,250		
Nov	648,141	678,003			7,609,826	7,757,253		
Dec	711,808	737,840			8,321,634	8,495,093		

**Intended Placements: Broiler-Type Pullet Chicks for Hatchery
Supply Flocks by Month and Total, 1997-99 ¹**

Month	Pullet Chicks Hatched			1999 as % of 1998	Cumulative Potential Placements Relative to Current Supply Flocks 7-15 Months Earlier ²		
	1997	1998	1999		1998	1999	2000
	<i>1,000</i>	<i>1,000</i>	<i>1,000</i>	<i>Percent</i>	<i>1,000</i>	<i>1,000</i>	<i>1,000</i>
US Place- ments							
Jan	6,397	6,765	7,059	104	56,552	59,403	64,050
Feb	5,916	6,328	6,882	109	57,494	59,937	64,255
Mar	6,443	6,776	7,195	106	57,677	60,699	64,608
Apr	6,036	6,687	7,038	105	58,228	61,775	64,574
May	7,062	7,062	7,736	110	58,085	61,893	
Jun	6,008	6,932	7,041	102	58,516	62,877	
Jul	7,167	6,788	7,088	104	58,325	63,005	
Aug	6,697	7,109	7,665	108	59,054	63,377	
Sep	6,502	7,328	6,870	94	58,320	63,197	
Oct	6,254	6,883			59,088	63,460	
Nov	6,347	7,312			58,608	63,710	
Dec	6,252	6,904			58,973	64,337	
Annual Total	77,081	82,874					
Total Place- ments ³							
Jan	7,547	8,613	8,679	101			
Feb	7,122	8,273	8,473	102			
Mar	7,894	8,760	8,863	101			
Apr	7,238	8,300	8,572	103			
May	8,505	8,957	9,463	106			
Jun	7,381	8,757	8,333	95			
Jul	8,460	8,423	8,342	99			
Aug	8,132	8,686	8,983	103			
Sep	8,092	8,985	8,044	90			
Oct	8,142	8,756					
Nov	7,973	9,412					
Dec	8,237	8,830					
Annual Total	94,723	104,752					

¹ Reported by leading breeders. Coverage may not be 100 percent. Includes expected pullet chicks from eggs sold during the preceding month at the rate of 125 pullet chicks per 30 dozen case of eggs.

² For Sep 1999, includes breeder pullet chicks hatched Jun 1998 through Feb 1999.

³ U.S. production of intended placements worldwide.

Procedures and Reliability

Data Sources: Primary data for the "**Chickens and Eggs**" report are from weekly and/or monthly questionnaires sent to producers. An attempt is made to collect information for layer and egg estimates from each known contractor and independent producer who has over 30,000 table egg layers. Coverage for operations with less than 30,000 table egg layers are estimated each month based on data reported in December. Approximately 900 contractors, independent egg producers, and started pullet operations are contacted each month. All known hatcheries, approximately 360, are contacted for information on a weekly and/or monthly basis.

Revisions: The previous month's estimates are subject to revision if late reports or corrected data indicates a different level. Additionally, revisions needed after the monthly report will be made at the end of the marketing year and published in the annual summaries of "**Layers and Egg Production**" and "**Hatchery Production**".

Procedures and Reliability: Operations are mailed a questionnaire and given adequate time to respond by mail. Those that do not respond are phoned. Great care is exercised to ensure that all operations are accounted for during each survey period. However, there are usually missing reports that must be accounted for in the estimates.

Sound statistical methodology is employed to derive estimates from the reported data. All data are checked for unusual values. All operations' data are compared to their own past operating profiles and also to trends from other operations. Data for missing operations are estimated based on similar operations or historical data. Survey data are subject to non-sampling errors such as omissions and mistakes in reporting and in processing. While these errors cannot be measured directly, they are minimized by reviewing all data for consistency and reasonableness.

Egg-type chicks hatched are comprised of all chicks of egg-type domesticated breeds including males and chicks destined for hatchery supply flocks and research purposes. The relationship of chicks hatched to chicken inventory and poultry marketings is carefully monitored. The disposition of egg-type chicks hatched prior to placement into the laying flock can vary significantly, which can make comparisons to changes in layer inventory inconsistent over time.

Intended placement data reported by leading breeders include pullet chicks expected from eggs sold the preceding month. The breeders in this report account for a large percentage of replacement pullets for hatchery supply flocks. Production of replacement pullets by these breeders indicates the number of pullets available to hatchery egg supply flocks several months before the pullets will actually move into the flocks. Beginning with the January 1996 publication the broiler-type cumulative potential placements went from 7-14 months earlier to 7-15 months earlier. The egg-type cumulative potential placements of 7-18 months represent the first laying cycle. Molting and additional laying cycles will increase the cumulative potential placements of egg-type hatching flocks.

The next "Chickens and Eggs" report will be released at 3 p.m. ET on November 23, 1999.

The United States Department of Agriculture (USDA) prohibits discrimination in all its programs on the basis of race, color, national origin, gender, religion, age, disability, political beliefs, sexual orientation, and marital or family status. (Not all prohibited bases apply to all programs.) Persons with disabilities who require alternative means for communication of program information (braille, large print, audiotape, etc.) should contact the USDA's TARGET Center at 202-720-2600 (voice and TDD).

To file a complaint of discrimination, write USDA, Director, Office of Civil Rights, Room 326-W, Whitten Building, 14th and Independence Avenue, SW, Washington, D.C., 20250-9410, or call 202-720-5964 (voice or TDD). USDA is an equal opportunity provider and employer.

ACCESS TO REPORTS!!

For your convenience, there are several ways to obtain NASS reports, data products, and services:

INTERNET ACCESS

All NASS reports are available free of charge on the worldwide Internet. For access, connect to the Internet and go to the NASS Home Page at: <http://www.usda.gov/nass/>. Select "Today's Reports" or Publications and then Reports by Calendar or Publications and then Search, by Title or Subject.

E-MAIL SUBSCRIPTION

There are two options for subscribing via e-mail. All NASS reports are available by subscription free of charge direct to your e-mail address. 1) Starting with the NASS Home Page at <http://www.usda.gov/nass/>, click on **Publications**, then click on the **Subscribe by E-mail** button which takes you to the page describing e-mail delivery of reports. Finally, click on **Go to the Subscription Page** and follow the instructions. 2) If you do NOT have Internet access, send an e-mail message to: usda-reports@usda.mannlib.cornell.edu. In the body of the message type the word: **list**.

AUTOFAX ACCESS

NASSFax service is available for some reports from your fax machine. Please call 202-720-2000, using the handset attached to your fax. Respond to the voice prompts. Document 0411 is a list of available reports.

----- PRINTED REPORTS OR DATA PRODUCTS

CALL OUR TOLL-FREE ORDER DESK: 800-999-6779 (U.S. and Canada)
Other areas, please call 703-834-0125 FAX: 703-834-0110
(Visa, MasterCard, check, or money order acceptable for payment.)

ASSISTANCE

For **assistance** with general agricultural statistics or further information about NASS or its products or services, contact the **Agricultural Statistics Hotline** at **800-727-9540**, 7:30 a.m. to 4:00 p.m. ET, or e-mail: nass@nass.usda.gov.