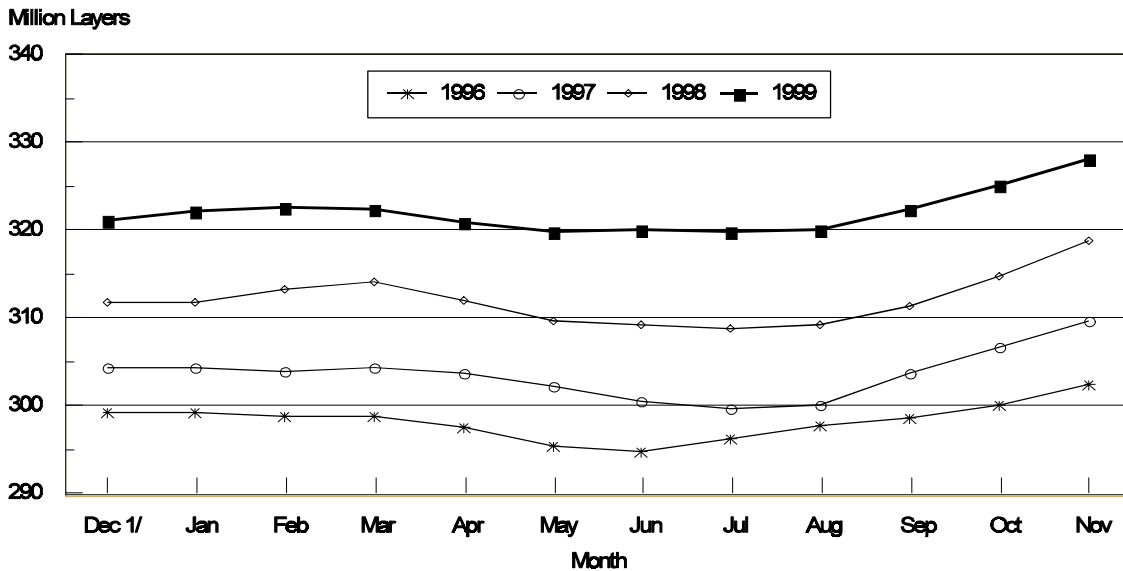


Released December 21, 1999, by the National Agricultural Statistics Service (NASS), Agricultural Statistics Board, U.S. Department of Agriculture. For information on "Chickens and Eggs" call Tom Kruchten at (202) 690-4870, office hours 7:30 a.m. to 4:00 p.m. ET.

## November Egg Production Up 4 Percent

U.S. egg production totaled 7.02 billion during November 1999, up 4 percent from the 6.72 billion produced in 1998. Production included 5.96 billion table eggs and 1.06 billion hatching eggs, of which 997 million were broiler-type and 61.0 million were egg-type. The total number of layers during November 1999 averaged 328 million, up 3 percent from the total average number of layers during November 1998. November egg production per 100 layers was 2,139 eggs, up 1 percent from 2,109 eggs in November 1998.

## Average Number of All Layers United States, 1996 - 1999



1/ Previous Year

*-Special Note-*

**Effective January 2000, the annual summary title will change from "Layers and Egg Production Summary" to "Chickens and Eggs Summary."**

All layers in the U.S. on December 1, 1999, totaled 329 million, up 3 percent from a year ago. The 329 million layers consisted of 270 million layers producing table or commercial type eggs, 55.8 million layers producing broiler-type hatching eggs, and 2.73 million layers producing egg-type hatching eggs. Rate of lay per day on December 1, 1999, averaged 71.6 eggs per 100 layers, up 1 percent from the 70.8 a year ago.

Laying flocks in the 30 major egg producing States produced 6.59 billion eggs during November, up 4 percent from November 1998. The average number of layers during November, at 309 million, was up 2 percent from a year earlier.

Individual State estimates are available for the 30 major egg producing States. These States are listed on page 8 of this release and account for approximately 94 percent of the total U.S. egg production. Production for the other States are grouped into an "Other States" category and combined with the 30 States published individually to obtain a U.S. estimate. Individual State estimates' for "Other States" are available annually in the "**Chickens and Eggs Summary**" report.

### **Egg-Type Chicks Hatched Up 6 Percent**

Egg-type chicks **hatched** during November totaled 33.1 million, up 6 percent from November 1998. **Eggs in incubators** totaled 30.0 million on December 1, 1999, down 7 percent from a year ago.

Domestic placements of **egg-type pullet chicks for future hatchery supply flocks** by leading breeders totaled 282,000 during November 1999, up 30 percent from November 1998.

### **Broiler Hatch Down 1 Percent**

The November 1999 **hatch** of broiler-type chicks, at 674 million, was down 1 percent from November of the previous year. There were 614 million **eggs in incubators** on December 1, 1999, down 1 percent from a year earlier.

Leading breeders placed 6.98 million **broiler-type pullet chicks for future domestic hatchery supply flocks** during November 1999, down 4 percent from November 1998.

**All Layers: Average Number on Hand During the Month,  
United States, 1996-99**

Month	1996	1997	1998	1999
	<i>1,000 Layers</i>	<i>1,000 Layers</i>	<i>1,000 Layers</i>	<i>1,000 Layers</i>
Dec <sup>1</sup>	299,345	304,463	311,888	321,193
Jan	299,230	304,289	311,876	322,136
Feb	298,904	304,000	313,245	322,754
Mar	298,853	304,285	314,101	322,516
Apr	297,493	303,618	311,917	320,917
May	295,516	302,241	309,615	319,851
Jun	294,837	300,537	309,166	320,091
Jul	296,290	299,605	308,927	319,791
Aug	297,804	300,211	309,251	320,166
Sep	298,582	303,661	311,278	322,394
Oct	300,052	306,807	314,847	325,290
Nov	302,386	309,670	318,797	328,086

<sup>1</sup> December preceding year.

**Eggs: Production During the Month by Type,  
United States, 1998-99**

Month	Total Eggs		Table Eggs		Hatching Eggs	
	1998	1999	1998	1999	1998	1999
	<i>Million Eggs</i>	<i>Million Eggs</i>	<i>Million Eggs</i>	<i>Million Eggs</i>	<i>Million Eggs</i>	<i>Million Eggs</i>
Dec <sup>1</sup>	6,841	7,029	5,802	5,957	1,039	1,072
Jan	6,766	6,971	5,720	5,890	1,046	1,081
Feb	6,109	6,282	5,150	5,296	959	986
Mar	6,869	7,043	5,797	5,934	1,072	1,109
Apr	6,603	6,769	5,556	5,693	1,047	1,076
May	6,665	6,925	5,584	5,808	1,081	1,117
Jun	6,456	6,734	5,433	5,644	1,023	1,090
Jul	6,720	6,903	5,674	5,797	1,046	1,106
Aug	6,694	6,970	5,655	5,875	1,039	1,095
Sep	6,480	6,860	5,480	5,797	1,000	1,063
Oct	6,791	7,132	5,746	6,039	1,045	1,093
Nov	6,723	7,018	5,695	5,960	1,028	1,058
During Year	79,717	82,636	67,292	69,690	12,425	12,946

<sup>1</sup> December preceding year.

**Layers and Eggs: Layers on Hand and Eggs Produced by Type,  
and Forced Molt, United States, October-November 1998-99<sup>1</sup>**

Item	Unit	1998	1999	1999 as % of 1998
Layers During Oct	1,000			
All Layers		314,847	325,290	103
Table Egg Type		258,093	267,324	104
Hatching Egg Type		56,754	57,966	102
Broiler-Type Hatching		54,241	55,285	102
Egg-Type Hatching		2,513	2,681	107
Eggs per 100 Layers During Oct	Number			
All Layers		2,157	2,193	102
Table Egg Type		2,226	2,259	101
Hatching Egg Type		1,841	1,886	102
Broiler-Type Hatching		1,812	1,863	103
Egg-Type Hatching		2,388	2,350	98
Eggs Produced During Oct	Million			
All Layers		6,791	7,132	105
Table Egg Type		5,746	6,039	105
Hatching Egg Type		1,045	1,093	105
Broiler-Type Hatching		985	1,030	105
Egg-Type Hatching		60	63	105
Layers on Nov 1	1,000			
All Layers		316,840	327,169	103
Table Egg Type		259,866	269,258	104
Hatching Egg Type		56,974	57,911	102
Broiler-Type Hatching		54,442	55,273	102
Egg-Type Hatching		2,532	2,638	104
Eggs per 100 Layers on Nov 1	Number			
All Layers		69.6	70.7	102
Table Egg Type		71.8	72.8	101
Hatching Egg Type		59.4	60.8	102
Broiler-Type Hatching		58.6	60.1	103
Egg-Type Hatching		77.0	75.3	98
Forced Molt Layers on Nov 1	Percent			
Percent Being Molted		3.7	3.6	97
Percent with Molt Completed		21.8	23.1	106
Layers Sold for Slaughter During Oct	1,000	13,362	15,318	115
Layers Rendered, Died, Destroyed, Composted or Disappeared For Any Reason During Oct	1,000	3,240	3,319	102
Pullets Less Than 20 Weeks of Age, Nov 1	1,000	93,761	96,514	103
Pullets Added During Oct <sup>2</sup>	1,000	20,561	23,621	115

<sup>1</sup> Revised.

<sup>2</sup> Pullet chicks one day old added to pullet flocks.

**Layers and Eggs: Layers on Hand and Eggs Produced by Type,  
and Forced Molt, United States, November-December 1998-99**

Item	Unit	1998 <sup>1</sup>	1999	1999 as % of 1998
Layers During Nov	1,000			
All Layers		318,797	328,086	103
Table Egg Type		261,472	269,843	103
Hatching Egg Type		57,325	58,243	102
Broiler-Type Hatching		54,746	55,552	101
Egg-Type Hatching		2,579	2,691	104
Eggs per 100 Layers During Nov	Number			
All Layers		2,109	2,139	101
Table Egg Type		2,178	2,209	101
Hatching Egg Type		1,793	1,817	101
Broiler-Type Hatching		1,768	1,795	102
Egg-Type Hatching		2,326	2,267	97
Eggs Produced During Nov	Million			
All Layers		6,723	7,018	104
Table Egg Type		5,695	5,960	105
Hatching Egg Type		1,028	1,058	103
Broiler-Type Hatching		968	997	103
Egg-Type Hatching		60	61	102
Layers on Dec 1	1,000			
All Layers		320,694	328,946	103
Table Egg Type		263,040	270,401	103
Hatching Egg Type		57,654	58,545	102
Broiler-Type Hatching		55,038	55,813	101
Egg-Type Hatching		2,616	2,732	104
Eggs per 100 Layers on Dec 1	Number			
All Layers		70.8	71.6	101
Table Egg Type		73.2	74.1	101
Hatching Egg Type		59.8	60.1	101
Broiler-Type Hatching		59.0	59.4	101
Egg-Type Hatching		77.4	75.4	97
Forced Molt Layers, Dec 1	Percent			
Percent Being Molted		2.7	2.0	74
Percent with Molt Completed		23.9	24.4	102
Layers Sold for Slaughter During Nov	1,000	12,608	16,504	131
Layers Rendered, Died, Destroyed, Composted or Disappeared For Any Reason During Nov	1,000	2,928	3,715	127
Pullets Less Than 20 Weeks of Age, Dec 1	1,000	95,718	95,457	100
Pullets Added During Nov <sup>2</sup>	1,000	21,494	22,159	103

<sup>1</sup> Revised.

<sup>2</sup> Pullet chicks one day old added to pullet flocks.

**Layers and Eggs: Layers on Hand and Eggs Produced by Type, and Forced Molt, 30 Selected States, October-November, 1998-99**<sup>1 2</sup>

Item	Unit	1998	1999	1999 as % of 1998
Layers During Oct	1,000			
All Layers		297,306	305,764	103
Table Egg Type		244,804	252,235	103
Hatching Egg Type		52,502	53,529	102
Broiler-Type Hatching		50,088	50,942	102
Egg-Type Hatching		2,414	2,587	107
Eggs per 100 Layers During Oct	Number			
All Layers		2,158	2,190	101
Table Egg Type		2,226	2,255	101
Hatching Egg Type		1,840	1,879	102
Broiler-Type Hatching		1,813	1,855	102
Egg-Type Hatching		2,403	2,358	98
Eggs Produced During Oct	Million			
All Layers		6,415	6,695	104
Table Egg Type		5,449	5,689	104
Hatching Egg Type		966	1,006	104
Broiler-Type Hatching		908	945	104
Egg-Type Hatching		58	61	105
Layers on Nov 1	1,000			
All Layers		299,115	307,633	103
Table Egg Type		246,435	254,176	103
Hatching Egg Type		52,680	53,457	101
Broiler-Type Hatching		50,246	50,908	101
Egg-Type Hatching		2,434	2,549	105
Eggs per 100 Layers on Nov 1	Number			
All Layers		69.8	70.5	101
Table Egg Type		71.9	72.6	101
Hatching Egg Type		59.5	60.7	102
Broiler-Type Hatching		58.7	60.0	102
Egg-Type Hatching		77.0	75.6	98
Forced Molt Layers on Nov 1	Percent			
Percent Being Molted		3.7	3.7	100
Percent with Molt Completed		21.6	23.1	107
Layers Sold for Slaughter During Oct	1,000	12,872	14,486	113
Layers Rendered, Died, Destroyed, Composted or Disappeared For Any Reason During Oct	1,000	3,082	3,154	102
Pullets Less Than 20 Weeks of Age, Nov 1	1,000	89,256	90,348	101
Pullets Added During Oct <sup>3</sup>	1,000	19,757	22,513	114

<sup>1</sup> The 30 States are listed in the table on page 8.

<sup>2</sup> Revised.

<sup>3</sup> Pullet chicks one day old added to pullet flocks.

**Layers and Eggs: Layers on Hand and Eggs Produced by Type, and Forced Molt, 30 Selected States, November-December, 1998-99 <sup>1</sup>**

Item	Unit	1998 <sup>2</sup>	1999	1999 as % of 1998
Layers During Nov	1,000			
All Layers		301,139	308,540	102
Table Egg Type		248,159	254,760	103
Hatching Egg Type		52,980	53,780	102
Broiler-Type Hatching		50,500	51,192	101
Egg-Type Hatching		2,480	2,588	104
Eggs per 100 Layers During Nov	1,000			
All Layers		2,109	2,135	101
Table Egg Type		2,176	2,203	101
Hatching Egg Type		1,797	1,815	101
Broiler-Type Hatching		1,770	1,791	101
Egg-Type Hatching		2,339	2,280	97
Eggs Produced During Nov	Million			
All Layers		6,352	6,588	104
Table Egg Type		5,400	5,612	104
Hatching Egg Type		952	976	103
Broiler-Type Hatching		894	917	103
Egg-Type Hatching		58	59	102
Layers on Dec 1	1,000			
All Layers		303,120	309,406	102
Table Egg Type		249,858	255,325	102
Hatching Egg Type		53,262	54,081	102
Broiler-Type Hatching		50,744	51,463	101
Egg-Type Hatching		2,518	2,618	104
Eggs per 100 Layers on Dec 1	Number			
All Layers		70.7	71.7	101
Table Egg Type		73.0	74.2	102
Hatching Egg Type		60.0	60.1	100
Broiler-Type Hatching		59.1	59.4	101
Egg-Type Hatching		77.7	75.7	97
Forced Molt Layers, Dec 1	Percent			
Percent Being Molted		2.7	2.1	78
Percent with Molt Completed		23.7	24.7	104
Layers Sold for Slaughter During Nov	1,000	12,038	15,422	128
Layers Rendered, Died, Destroyed, Composted or Disappeared For Any Reason During Nov	1,000	2,780	3,541	127
Pullets Less Than 20 Weeks of Age, Dec 1	1,000	90,510	89,084	98
Pullets Added During Nov <sup>3</sup>	1,000	20,209	20,718	103

<sup>1</sup> The 30 States are listed in the table on page 8.

<sup>2</sup> Revised.

<sup>3</sup> Pullet chicks one day old added to pullet flocks.

**Layers and Eggs: Layers on Hand and Eggs Produced by State  
and United States, During October 1998-99**

State	Table Egg Layers in Flocks 30,000 and Above		All Layers <sup>1</sup>		Eggs per 100 for All Layers <sup>1</sup>	
	1998	1999 <sup>2</sup>	1998	1999 <sup>2</sup>	1998	1999 <sup>2</sup>
	<i>1,000</i>	<i>1,000</i>	<i>1,000</i>	<i>1,000</i>	<i>Number</i>	<i>Number</i>
AL	4,477	3,568	11,185	10,608	1,967	1,961
AR	4,296	4,917	14,434	15,340	1,864	1,949
CA	24,937	25,024	25,616	25,716	2,190	2,220
CO	3,057	3,155	3,618	3,678	2,266	2,365
CT	2,812	2,911	2,972	3,082	2,389	2,336
FL	9,397	10,041	10,086	10,739	2,072	2,207
GA	12,088	11,745	21,338	21,031	2,043	2,121
HI	606	565	632	594	2,057	2,037
IL	2,660	3,396	2,943	3,683	2,186	2,417
IN	21,289	21,360	21,949	22,038	2,273	2,246
IA	22,876	25,273	23,767	26,257	2,163	2,289
ME	4,779	4,490	4,900	4,623	2,449	2,379
MD	2,887	2,858	3,335	3,241	2,129	2,160
MI	5,345	5,822	5,621	6,089	2,243	2,201
MN	11,365	11,618	12,053	12,286	2,240	2,165
MS	2,180	1,770	7,133	6,881	1,949	1,933
MO	5,744	4,588	7,153	6,020	2,167	2,292
NE	10,179	11,427	10,329	11,577	2,227	2,159
NY	3,296	3,417	3,530	3,687	2,380	2,387
NC	3,701	3,686	11,112	11,114	1,944	1,943
OH	27,690	30,593	28,283	31,186	2,273	2,238
OK	2,031	1,954	3,972	3,931	2,039	2,010
OR	2,451	2,732	2,614	2,895	2,181	2,245
PA	20,982	21,508	22,274	22,809	2,267	2,315
SC	3,568	3,805	4,579	4,817	2,162	2,138
SD	2,050	1,908	2,253	2,137	2,264	2,340
TX	13,404	13,287	17,186	17,268	2,054	2,166
VA	1,643	1,595	3,714	3,543	1,966	2,032
WA	4,875	4,691	4,995	4,811	2,346	2,274
WI	3,083	3,593	3,730	4,083	2,279	2,327
30 Sts	239,748	247,297	297,306	305,764	2,158	2,190
Oth Sts <sup>3</sup>	12,168	14,038	17,541	19,526	2,144	2,238
US	251,916	261,335	314,847	325,290	2,157	2,193

<sup>1</sup> Includes all layers and eggs produced in both table egg and hatching egg flocks regardless of size.

<sup>2</sup> Revised.

<sup>3</sup> Estimates for individual States are not available.



**Layers and Eggs: Layers on Hand and Eggs Produced by State  
and United States, During November 1998-99**

State	Table Egg Layers in Flocks 30,000 and Above		All Layers <sup>1</sup>		Eggs per 100 for All Layers <sup>1</sup>	
	1998	1999	1998	1999	1998	1999
	<i>1,000</i>	<i>1,000</i>	<i>1,000</i>	<i>1,000</i>	<i>Number</i>	<i>Number</i>
AL	4,437	3,658	11,085	10,600	1,967	1,943
AR	4,428	4,990	14,574	15,550	1,859	1,878
CA	25,045	24,815	25,702	25,502	2,202	2,141
CO	3,123	3,254	3,682	3,773	2,146	2,253
CT	2,870	2,914	3,037	3,078	2,305	2,339
FL	9,698	10,050	10,388	10,736	2,166	2,142
GA	12,198	11,833	21,649	21,037	2,042	2,096
HI	596	569	623	598	2,006	1,940
IL	2,657	3,258	2,921	3,601	2,123	2,305
IN	21,373	21,776	22,047	22,459	2,123	2,204
IA	23,755	25,661	24,660	26,601	2,076	2,210
ME	5,009	4,477	5,118	4,616	2,384	2,318
MD	3,038	3,004	3,501	3,436	2,114	2,270
MI	5,427	5,923	5,704	6,189	2,191	2,197
MN	11,478	11,920	12,166	12,568	2,104	2,077
MS	2,126	1,759	7,056	6,845	1,899	1,928
MO	5,403	4,636	6,851	6,111	2,146	2,242
NE	10,377	11,620	10,527	11,770	2,156	2,116
NY	3,353	3,490	3,602	3,730	2,332	2,306
NC	3,783	3,647	11,332	11,339	1,915	1,870
OH	27,866	30,817	28,515	31,400	2,199	2,188
OK	1,994	1,962	4,003	3,944	1,924	1,927
OR	2,627	2,741	2,788	2,917	2,188	2,228
PA	21,405	21,631	22,721	22,965	2,205	2,216
SC	3,648	3,906	4,676	4,881	2,096	2,090
SD	2,010	1,926	2,233	2,142	2,194	2,194
TX	13,723	13,789	17,580	17,812	2,059	2,150
VA	1,652	1,580	3,715	3,458	1,911	1,995
WA	4,873	4,604	4,993	4,724	2,271	2,231
WI	3,146	3,651	3,690	4,158	2,195	2,333
30 Sts	243,118	249,861	301,139	308,540	2,109	2,135
Oth Sts <sup>2</sup>	12,238	14,033	17,658	19,546	2,101	2,200
US	255,356	263,894	318,797	328,086	2,109	2,139

<sup>1</sup> Includes all layers and eggs produced in both table egg and hatching egg flocks regardless of size.

<sup>2</sup> Estimates for individual States are not available.

**Egg Production: By Type, State, and United States,  
October 1998-99**

State	Total Production		Table Eggs <sup>1</sup>		Hatching Eggs <sup>1</sup>	
	1998	1999 <sup>2</sup>	1998	1999 <sup>2</sup>	1998	1999 <sup>2</sup>
	<i>Million Eggs</i>	<i>Million Eggs</i>	<i>Million Eggs</i>	<i>Million Eggs</i>	<i>Million Eggs</i>	<i>Million Eggs</i>
AL	220	208	100	79	120	129
AR	269	299	92	109	177	190
CA	561	571				
CO	82	87				
CT	71	72				
FL	209	237	196	224	13	13
GA	436	446	261	261	175	185
HI	13.0	12.1	13.0	12.1	0	0
IL	65	89	61	85	4	4
IN	499	495	487	484	12	11
IA	514	601				
ME	120	110				
MD	71	70	64	64	7	6
MI	126	134				
MN	270	266	260	257	10	9
MS	139	133	48	40	91	93
MO	155	138				
NE	230	250	230	250	0	0
NY	84	88				
NC	216	216	88	89	128	127
OH	643	698				
OK	81	79	48	46	33	33
OR	57	65	56	64	1	1
PA	505	528	491	513	14	15
SC	99	103	81	85	18	18
SD	51	50	51	50	0	0
TX	353	374				
VA	73	72	37	37	36	35
WA	117	109				
WI	85	95				
30 Sts	6,415	6,695	5,449	5,689	966	1,006
Oth Sts <sup>3</sup>	376	437	297	350	79	87
US	6,791	7,132	5,746	6,039	1,045	1,093

<sup>1</sup> Data by type of flock not shown for some States to avoid disclosing individual operations.

<sup>2</sup> Revised.

<sup>3</sup> Estimates for individual States are not available.

**Egg Production: By Type, State, and United States,  
November 1998-99**

State	Total Production		Table Eggs <sup>1</sup>		Hatching Eggs <sup>1</sup>	
	1998	1999	1998	1999	1998	1999
	<i>Million Eggs</i>	<i>Million Eggs</i>	<i>Million Eggs</i>	<i>Million Eggs</i>	<i>Million Eggs</i>	<i>Million Eggs</i>
AL	218	206	102	82	116	124
AR	271	292	98	108	173	184
CA	566	546				
CO	79	85				
CT	70	72				
FL	225	230	212	218	13	12
GA	442	441	267	263	175	178
HI	12.5	11.6	12.5	11.6	0	0
IL	62	83	58	78	4	5
IN	468	495	457	484	11	11
IA	512	588				
ME	122	107				
MD	74	78	66	71	8	7
MI	125	136				
MN	256	261	247	253	9	8
MS	134	132	46	41	88	91
MO	147	137				
NE	227	249	227	249	0	0
NY	84	86				
NC	217	212	89	87	128	125
OH	627	687				
OK	77	76	45	44	32	32
OR	61	65	60	64	1	1
PA	501	509	486	493	15	16
SC	98	102	79	85	19	17
SD	49	47	49	47	0	0
TX	362	383				
VA	71	69	37	36	34	33
WA	113	105				
WI	81	97				
30 Sts	6,352	6,588	5,400	5,612	952	976
Oth Sts <sup>2</sup>	371	430	295	348	76	82
US	6,723	7,018	5,695	5,960	1,028	1,058

<sup>1</sup> Data by type of flock not shown for some States to avoid disclosing individual operations.

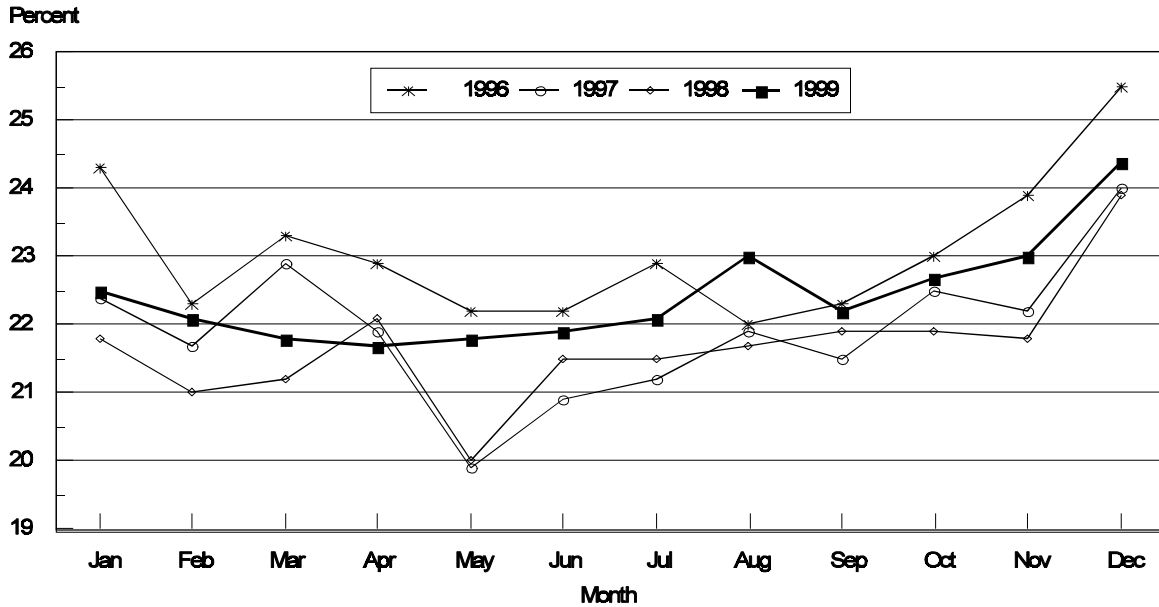
<sup>2</sup> Estimates for individual States are not available.

**Forced Molt: Percent of All Layers by Month,  
United States, 1998-99<sup>1</sup>**

Month	Percent Being Molted		Percent with Molt Completed	
	1998	1999	1998	1999
	<i>Percent</i>	<i>Percent</i>	<i>Percent</i>	<i>Percent</i>
Jan	4.1	4.1	21.8	22.5
Feb	5.2	4.9	21.0	22.1
Mar	4.4	3.3	21.2	21.8
Apr	2.2	2.8	22.1	21.7
May	5.5	5.6	20.0	21.8
Jun	4.8	5.2	21.4	21.9
Jul	3.9	5.5	21.6	22.1
Aug	3.9	4.6	21.7	23.0
Sep	4.1	4.3	21.9	22.2
Oct	4.9	4.2	21.9	22.8
Nov	3.7	3.6	21.8	23.1
Dec	2.7	2.0	23.9	24.4

<sup>1</sup> As of first of month.

**All Layers: United States  
Percent Molt Completed, 1996 - 1999  
First of Month**



**Forced Molt: Percent of All Layers by State  
and United States, December 1998-99 <sup>1</sup>**

State	Percent Being Molted		Percent with Molt Completed	
	1998	1999	1998	1999
	<i>Percent</i>	<i>Percent</i>	<i>Percent</i>	<i>Percent</i>
AL	1.5	0.0	16.5	15.5
AR	0.0	1.0	9.0	7.0
CA	7.5	5.0	39.0	41.0
CO	3.5	2.0	33.5	24.0
CT	0.0	0.0	14.0	10.5
FL	4.5	1.5	31.5	40.5
GA	1.5	1.0	19.0	13.5
HI	4.0	6.5	42.0	44.5
IL	0.0	1.5	37.0	12.5
IN	2.0	1.5	32.0	42.5
IA	4.0	2.5	32.0	32.0
ME	0.0	0.0	1.5	0.0
MD	3.5	3.5	27.0	37.0
MI	3.0	1.0	27.0	27.0
MN	5.0	2.5	29.5	35.0
MS	5.0	1.5	7.0	12.0
MO	0.0	2.0	19.0	28.0
NE	2.5	3.5	17.5	28.5
NY	1.0	0.5	6.0	4.0
NC	0.0	0.5	10.5	9.5
OH	0.5	1.0	17.0	16.5
OK	1.0	3.5	8.5	7.5
OR	2.5	2.5	41.0	40.0
PA	4.0	5.5	21.0	22.0
SC	0.0	0.0	25.0	29.5
SD	4.0	2.5	30.0	29.0
TX	2.0	0.5	28.5	23.0
VA	0.0	3.0	4.0	16.0
WA	6.5	4.0	47.0	44.0
WI	2.0	0.5	29.5	22.5
30 Sts	2.7	2.1	23.7	24.7
Oth Sts <sup>2</sup>	3.5	0.3	27.5	19.9
US	2.7	2.0	23.9	24.4

<sup>1</sup> As of first of month.

<sup>2</sup> Estimates for individual States are not available.

**Hatchery Production: Eggs in Incubators, Chicks Hatched,  
and Placements by Type, United States, November-December 1998-99**

Item	1998	1999	1999 as % of 1998
	<i>1,000</i>	<i>1,000</i>	<i>Percent</i>
<b>Egg-Type</b>			
Eggs in Incubators on Dec 1	32,405	29,985	93
Chicks Hatched During Nov	31,251	33,078	106
Chicks Hatched Jan thru Nov	402,660	416,028	103
Pullets Hatched During Nov for Intended Placements in Hatchery Supply Flocks	217	282	130
7-18 Month Earlier <sup>1</sup>	3,010	3,088	103
<b>Broiler-Type</b>			
Eggs in Incubators on Dec 1	618,483	614,258	99
Chicks Hatched During Nov	678,003	673,736	99
Chicks Hatched Jan thru Nov	7,757,253	7,960,201	103
Pullets Hatched During Nov for Intended Placements in Hatchery Supply Flocks	7,312	6,984	96
7-15 Months Earlier <sup>2</sup>	58,608	63,710	109

<sup>1</sup> 1999 includes pullet chicks hatched May 1998 through Apr 1999.

<sup>2</sup> 1999 includes pullet chicks hatched Aug 1998 through Apr 1999.

**Egg-Type Eggs in Incubators: By Region and United States,  
December 1, 1998-99**

Geographic Division	1998	1999	1999 as % of 1998
	<i>1,000</i>	<i>1,000</i>	<i>Percent</i>
North Atlantic	6,717	5,079	76
E North Central	9,032	7,295	81
W North Central	5,713	5,646	99
South Atlantic	3,970	2,782	70
South Central	3,111	4,673	150
West	3,862	4,510	117
<b>US</b>	<b>32,405</b>	<b>29,985</b>	<b>93</b>

**Regional Listing:**

North Atlantic = CT, ME, MA, NH, NJ, NY, PA, RI, VT.

E North Central = IL, IN, MI, OH, WI.

W North Central = IA, KS, MN, MO, NE, ND, SD.

South Atlantic = DE, FL, GA, MD, NC, SC, VA, WV.

South Central = AL, AR, KY, LA, MS, OK, TN, TX.

West = AK, AZ, CA, CO, HI, ID, MT, NM, NV, OR, UT, WA, WY.

**Egg-Type Chicks Hatched: By State and United States,  
November 1998-99**

State	November			Jan-Nov		
	1998	1999	1999 as % of 1998	1998	1999	1999 as % of 1998
	<i>1,000</i>	<i>1,000</i>	<i>Percent</i>	<i>1,000</i>	<i>1,000</i>	<i>Percent</i>
AR	567	816	144	8,436	9,023	107
FL	842	909	108	11,289	11,870	105
GA	1,635	1,748	107	21,961	21,399	97
IN	6,538	6,278	96	77,083	77,385	100
IA	4,487	4,393	98	48,513	52,801	109
KS	255	347	136	2,610	3,408	131
MN	1,681	1,310	78	20,354	19,590	96
MO	296	296	100	3,717	3,752	101
PA	4,621	4,205	91	58,181	59,826	103
Oth Sts <sup>1</sup>	10,329	12,776	124	150,516	156,974	104
US	31,251	33,078	106	402,660	416,028	103

<sup>1</sup> Not published separately to avoid disclosing data for individual operations.

**Egg-Type Chicks Hatched: By Month, United States, 1997-99**

Month	By Months				Cumulative			
	1997	1998	1999	1999 as % of 1998	1997	1998	1999	1999 as % of 1998
	<i>1,000</i>	<i>1,000</i>	<i>1,000</i>	<i>Percent</i>	<i>1,000</i>	<i>1,000</i>	<i>1,000</i>	<i>Percent</i>
Jan	33,752	37,159	35,653	96	33,752	37,159	35,653	96
Feb	35,655	34,593	35,648	103	69,407	71,752	71,301	99
Mar	37,347	40,590	41,325	102	106,754	112,342	112,626	100
Apr	38,842	39,043	42,043	108	145,596	151,385	154,669	102
May	39,020	39,192	40,590	104	184,616	190,577	195,259	102
Jun	36,796	39,302	40,569	103	221,412	229,879	235,828	103
Jul	33,772	35,558	34,269	96	255,184	265,437	270,097	102
Aug	33,061	33,380	35,453	106	288,245	298,817	305,550	102
Sep	37,118	37,943	38,841	102	325,363	336,760	344,391	102
Oct	35,262	34,649	38,559	111	360,625	371,409	382,950	103
Nov	28,122	31,251	33,078	106	388,747	402,660	416,028	103
Dec	35,796	35,733			424,543	438,393		

**Intended Placements: Egg-Type Pullet Chicks for Hatchery Supply  
Flocks by Month and Total, United States, 1997-99<sup>1</sup>**

Month	Pullet Chicks Hatched			1999 as % of 1998	Cumulative Potential Placements Relative to Current Supply Flocks 7-18 Months Earlier <sup>2</sup>		
	1997	1998	1999		1998	1999	2000
	<i>1,000</i>	<i>1,000</i>	<i>1,000</i>	<i>Percent</i>	<i>1,000</i>	<i>1,000</i>	<i>1,000</i>
Jan	208	189	166	88	2,823	3,029	3,012
Feb	222	250	267	107	2,764	3,120	2,945
Mar	209	225	257	114	2,863	3,020	3,078
Apr	316	333	287	86	3,034	2,942	2,981
May	273	192	283	147	3,057	3,044	2,877
Jun	254	354	187	53	2,976	3,132	2,942
Jul	207	298	231	78	2,968	3,108	
Aug	285	185	318	172	2,949	3,085	
Sep	402	324	227	70	2,977	3,102	
Oct	256	358	254	71	2,993	3,134	
Nov	129	217	282	130	3,010	3,088	
Dec	207	183			2,929	3,179	
Total	2,968	3,108					

<sup>1</sup> Reported by leading breeders. Coverage may not be 100 percent. Includes expected pullet chicks from eggs sold during the preceding month at the rate of 125 pullet chicks per 30 dozen case of eggs.

<sup>2</sup> For November 1999, includes breeder pullet chicks hatched May 1998 through Apr 1999. The 7-18 months represent the first laying cycle. Molting and additional laying cycles will increase the cumulative potential placements.

**Broiler-Type Eggs in Incubators: By Region  
and United States, December 1, 1998-99**

Geographic Division	1998	1999	1999 as % of 1998
	<i>1,000</i>	<i>1,000</i>	<i>Percent</i>
North Atlantic	12,128	11,078	91
E North Central	8,414	7,769	92
W North Central	22,503	20,590	91
South Atlantic	235,462	233,157	99
South Central	315,681	319,212	101
West	24,295	22,452	92
US	618,483	614,258	99



**Broiler-Type Chicks Hatched: By State  
and United States, November 1998-99**

State	November			Jan-Nov		
	1998	1999	1999 as % of 1998	1998	1999	1999 as % of 1998
	<i>1,000</i>	<i>1,000</i>	<i>Percent</i>	<i>1,000</i>	<i>1,000</i>	<i>Percent</i>
AL	88,216	89,525	101	1,008,881	1,044,868	104
AR	99,044	98,329	99	1,134,962	1,166,932	103
DE	14,455	14,954	103	172,864	172,091	100
FL	9,148	9,122	100	102,185	105,648	103
GA	104,270	100,075	96	1,176,332	1,197,953	102
MD	28,674	29,181	102	338,611	333,214	98
MS	59,201	58,433	99	685,584	698,500	102
NC	57,688	59,300	103	661,137	685,383	104
PA	11,435	11,383	100	138,056	138,564	100
SC	15,139	15,892	105	163,911	178,953	109
TX	42,718	46,487	109	494,325	525,467	106
VA	21,520	21,718	101	256,154	258,041	101
CA TN & WV	37,132	36,971	100	418,366	433,721	104
15 Sts <sup>1</sup>	588,640	591,370	100	6,751,368	6,939,335	103
Oth Sts <sup>2</sup>	89,363	82,366	92	1,005,885	1,020,866	101
US	678,003	673,736	99	7,757,253	7,960,201	103

<sup>1</sup> States in the weekly hatchery production estimating program.

<sup>2</sup> Not published separately to avoid disclosing data for individual operations.

**Broiler Chicks Hatched: By Month, United States, 1997-99**

Month	By Months				Cumulative			
	1997	1998	1999	1999 as % of 1998	1997	1998	1999	1999 as % of 1998
	<i>1,000</i>	<i>1,000</i>	<i>1,000</i>	<i>Percent</i>	<i>1,000</i>	<i>1,000</i>	<i>1,000</i>	<i>Percent</i>
Jan	699,952	711,373	735,348	103	699,952	711,373	735,348	103
Feb	634,142	645,180	661,739	103	1,334,094	1,356,553	1,397,087	103
Mar	718,413	730,316	755,179	103	2,052,507	2,086,869	2,152,266	103
Apr	693,717	708,260	734,340	104	2,746,224	2,795,129	2,886,606	103
May	724,679	739,319	766,161	104	3,470,903	3,534,448	3,652,767	103
Jun	704,247	717,967	744,447	104	4,175,150	4,252,415	4,397,214	103
Jul	710,622	722,715	750,547	104	4,885,772	4,975,130	5,147,761	103
Aug	708,572	715,650	741,253	104	5,594,344	5,690,780	5,889,014	103
Sep	684,156	695,281	699,664	101	6,278,500	6,386,061	6,588,678	103
Oct	683,185	693,189	697,787	101	6,961,685	7,079,250	7,286,465	103
Nov	648,141	678,003	673,736	99	7,609,826	7,757,253	7,960,201	103
Dec	711,808	737,840			8,321,634	8,495,093		

**Intended Placements: Broiler-Type Pullet Chicks for Hatchery  
Supply Flocks by Month and Total, 1997-99 <sup>1</sup>**

Month	Pullet Chicks Hatched			1999 as % of 1998	Cumulative Potential Placements Relative to Current Supply Flocks 7-15 Months Earlier <sup>2</sup>		
	1997	1998	1999		1998	1999	2000
	<i>1,000</i>	<i>1,000</i>	<i>1,000</i>	<i>Percent</i>	<i>1,000</i>	<i>1,000</i>	<i>1,000</i>
US Place- ments							
Jan	6,397	6,765	7,059	104	56,552	59,403	64,050
Feb	5,916	6,328	6,882	109	57,494	59,937	64,255
Mar	6,443	6,776	7,195	106	57,677	60,699	64,608
Apr	6,036	6,687	7,038	105	58,228	61,775	64,574
May	7,062	7,062	7,736	110	58,085	61,893	64,636
Jun	6,008	6,932	7,041	102	58,516	62,877	64,738
Jul	7,167	6,788	7,088	104	58,325	63,005	
Aug	6,697	7,109	7,665	108	59,054	63,377	
Sep	6,502	7,328	6,870	94	58,320	63,197	
Oct	6,254	6,883	7,121	103	59,088	63,460	
Nov	6,347	7,312	6,984	96	58,608	63,710	
Dec	6,252	6,904			58,973	64,337	
Annual Total	77,081	82,874					
Total Place- ments <sup>3</sup>							
Jan	7,547	8,613	8,679	101			
Feb	7,122	8,273	8,473	102			
Mar	7,894	8,760	8,863	101			
Apr	7,238	8,300	8,572	103			
May	8,505	8,957	9,463	106			
Jun	7,381	8,757	8,333	95			
Jul	8,460	8,423	8,342	99			
Aug	8,132	8,686	8,983	103			
Sep	8,092	8,985	8,044	90			
Oct	8,142	8,756	8,223	94			
Nov	7,973	9,412	8,228	87			
Dec	8,237	8,830					
Annual Total	94,723	104,752					

<sup>1</sup> Reported by leading breeders. Coverage may not be 100 percent. Includes expected pullet chicks from eggs sold during the preceding month at the rate of 125 pullet chicks per 30 dozen case of eggs.

<sup>2</sup> For Nov 1999, includes breeder pullet chicks hatched Aug 1998 through Apr 1999.

<sup>3</sup> U.S. production of intended placements worldwide.

## Procedures and Reliability

**Data Sources:** Primary data for the "**Chickens and Eggs**" report are from weekly and/or monthly questionnaires sent to producers. An attempt is made to collect information for layer and egg estimates from each known contractor and independent producer who has over 30,000 table egg layers. Coverage for operations with less than 30,000 table egg layers are estimated each month based on data reported in December. Approximately 900 contractors, independent egg producers, and started pullet operations are contacted each month. All known hatcheries, approximately 360, are contacted for information on a weekly and/or monthly basis.

**Revisions:** The previous month's estimates are subject to revision if late reports or corrected data indicates a different level. Additionally, revisions needed after the monthly report will be made at the end of the marketing year and published in the annual summaries of "**Chickens and Eggs Summary**" and "**Hatchery Production**".

**Procedures and Reliability:** Operations are mailed a questionnaire and given adequate time to respond by mail. Those that do not respond are phoned. Great care is exercised to ensure that all operations are accounted for during each survey period. However, there are usually missing reports that must be accounted for in the estimates.

Sound statistical methodology is employed to derive estimates from the reported data. All data are checked for unusual values. All operations' data are compared to their own past operating profiles and also to trends from other operations. Data for missing operations are estimated based on similar operations or historical data. Survey data are subject to non-sampling errors such as omissions and mistakes in reporting and in processing. While these errors cannot be measured directly, they are minimized by reviewing all data for consistency and reasonableness.

Egg-type chicks hatched are comprised of all chicks of egg-type domesticated breeds including males and chicks destined for hatchery supply flocks and research purposes. The relationship of chicks hatched to chicken inventory and poultry marketings is carefully monitored. The disposition of egg-type chicks hatched prior to placement into the laying flock can vary significantly, which can make comparisons to changes in layer inventory inconsistent over time.

Intended placement data reported by leading breeders include pullet chicks expected from eggs sold the preceding month. The breeders in this report account for a large percentage of replacement pullets for hatchery supply flocks. Production of replacement pullets by these breeders indicates the number of pullets available to hatchery egg supply flocks several months before the pullets will actually move into the flocks. Beginning with the January 1996 publication the broiler-type cumulative potential placements went from 7-14 months earlier to 7-15 months earlier. The egg-type cumulative potential placements of 7-18 months represent the first laying cycle. Molting and additional laying cycles will increase the cumulative potential placements of egg-type hatching flocks.

The next "Chickens and Eggs" report will be released at 3 p.m. ET on January 31, 2000.

The United States Department of Agriculture (USDA) prohibits discrimination in all its programs on the basis of race, color, national origin, gender, religion, age, disability, political beliefs, sexual orientation, and marital or family status. (Not all prohibited bases apply to all programs.) Persons with disabilities who require alternative means for communication of program information (braille, large print, audiotape, etc.) should contact the USDA's TARGET Center at 202-720-2600 (voice and TDD).

To file a complaint of discrimination, write USDA, Director, Office of Civil Rights, Room 326-W, Whitten Building, 14th and Independence Avenue, SW, Washington, D.C., 20250-9410, or call 202-720-5964 (voice or TDD). USDA is an equal opportunity provider and employer.

## ACCESS TO REPORTS!!

---

For your convenience, there are several ways to obtain NASS reports, data products, and services:

### INTERNET ACCESS

All NASS reports are available free of charge on the worldwide Internet. For access, connect to the Internet and go to the NASS Home Page at: <http://www.usda.gov/nass/>. Select "Today's Reports" or Publications and then Reports by Calendar or Publications and then Search, by Title or Subject.

### E-MAIL SUBSCRIPTION

There are two options for subscribing via e-mail. All NASS reports are available by subscription free of charge direct to your e-mail address. 1) Starting with the NASS Home Page at <http://www.usda.gov/nass/>, click on **Publications**, then click on the **Subscribe by E-mail** button which takes you to the page describing e-mail delivery of reports. Finally, click on **Go to the Subscription Page** and follow the instructions. 2) If you do NOT have Internet access, send an e-mail message to: [usda-reports@usda.mannlib.cornell.edu](mailto:usda-reports@usda.mannlib.cornell.edu). In the body of the message type the word: **list**.

### AUTOFAX ACCESS

NASSFax service is available for some reports from your fax machine. Please call 202-720-2000, using the handset attached to your fax. Respond to the voice prompts. Document 0411 is a list of available reports.

-----

### PRINTED REPORTS OR DATA PRODUCTS

CALL OUR TOLL-FREE ORDER DESK: 800-999-6779 (U.S. and Canada)  
Other areas, please call 703-834-0125 FAX: 703-834-0110  
(Visa, MasterCard, check, or money order acceptable for payment.)

-----

### ASSISTANCE

For **assistance** with general agricultural statistics or further information about NASS or its products or services, contact the **Agricultural Statistics Hotline** at **800-727-9540**, 7:30 a.m. to 4:00 p.m. ET, or e-mail: [nass@nass.usda.gov](mailto:nass@nass.usda.gov).