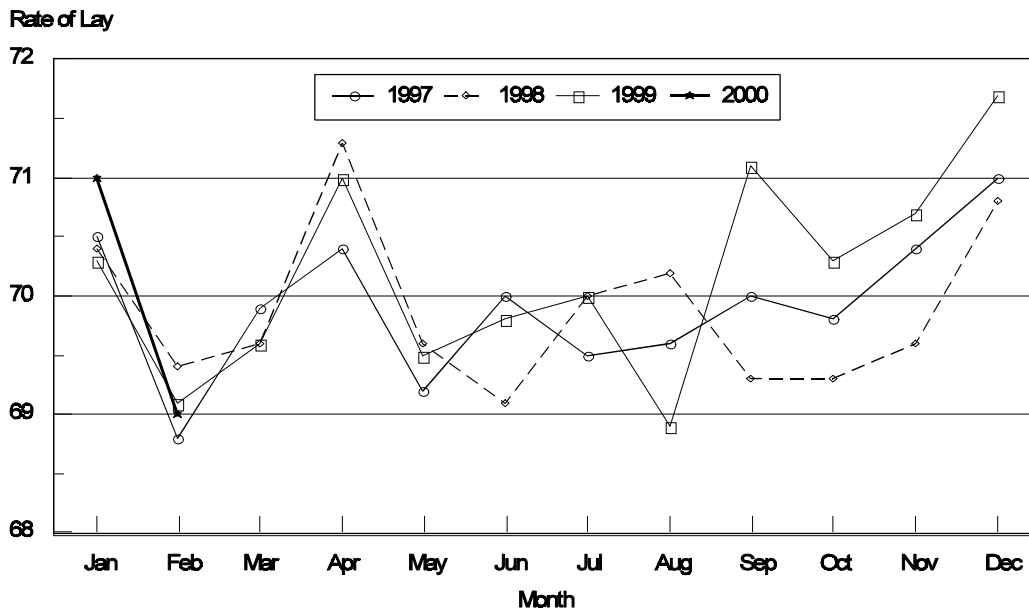


Released February 22, 2000, by the National Agricultural Statistics Service (NASS), Agricultural Statistics Board, U.S. Department of Agriculture. For information on "Chickens and Eggs" call Tom Kruchten at (202) 690-4870, office hours 7:30 a.m. to 4:00 p.m. ET.

## January Egg Production Up 2 Percent

U.S. egg production totaled 7.15 billion during January 2000, up 2 percent from the 6.98 billion produced in 1999. Production included 6.06 billion table eggs and 1.09 billion hatching eggs, of which 1.02 billion were broiler-type and 65.0 million were egg-type. The total number of layers during January 2000 averaged 329 million, up 2 percent from the total average number of layers during January 1999. January egg production per 100 layers was 2,176 eggs, up 1 percent from 2,165 eggs in January 1999.

## All Layers: 1st of Month Rate of Lay United States, 1997 - 2000 Eggs Per 100 Layers



All layers in the U.S. on February 1, 2000 totaled 329 million, up 2 percent from a year ago. The 329 million layers consisted of 270 million layers producing table or commercial type eggs, 56.0 million layers producing broiler-type hatching eggs, and 2.69 million layers producing egg-type hatching eggs. Rate of lay per day on February 1, 2000, averaged 69.0 eggs per 100 layers, down slightly from the 69.1 a year ago.

Laying flocks in the 30 major egg producing States produced 6.72 billion eggs during January, up 2 percent from January 1999. The average number of layers during January, at 309 million, was up 2 percent from a year earlier.

Individual State estimates are available for the 30 major egg producing States. These States are listed on page 8 of this release and account for approximately 94 percent of the total U.S. egg production. Production for the other States are grouped into an "Other States" category and combined with the 30 States published individually to obtain a U.S. estimate. Individual State estimates for "Other States" are available annually in the "**Chickens and Eggs Summary**" report.

### **Egg-Type Chicks Hatched Down 4 Percent**

Egg-type chicks **hatched** during January totaled 34.1 million, down 4 percent from January 1999. **Eggs in incubators** totaled 32.8 million on February 1, 2000, down 3 percent from a year ago.

Domestic placements of **egg-type pullet chicks for future hatchery supply flocks** by leading breeders totaled 212,000 during January 2000, up 28 percent from January 1999.

### **Broiler Hatch Up 2 Percent**

The January 2000 **hatch** of broiler-type chicks, at 749 million, was up 2 percent from January of the previous year. There were 620 million **eggs in incubators** on February 1, 2000, up 2 percent from a year earlier.

Leading breeders placed 6.86 million **broiler-type pullet chicks for future domestic hatchery supply flocks** during January 2000, down 3 percent from January 1999.

**All Layers: Average Number on Hand During the Month,  
United States, 1997-00**

Month	1997	1998	1999	2000
	<i>1,000 Layers</i>	<i>1,000 Layers</i>	<i>1,000 Layers</i>	<i>1,000 Layers</i>
Dec <sup>1</sup>	304,463	311,898	321,782	328,824
Jan	304,289	311,906	322,326	328,578
Feb	304,000	313,285	322,797	
Mar	304,285	314,141	322,758	
Apr	303,618	311,957	321,515	
May	302,241	309,655	320,498	
Jun	300,537	309,206	320,441	
Jul	299,605	308,967	319,811	
Aug	300,211	309,291	320,173	
Sep	303,661	311,358	322,394	
Oct	306,807	313,377	325,272	
Nov	309,670	319,625	328,253	

<sup>1</sup> December preceding year.

**Eggs: Production During the Month by Type,  
United States, 1999-00**

Month	Total Eggs		Table Eggs		Hatching Eggs	
	1999	2000	1999	2000	1999	2000
	<i>Million Eggs</i>	<i>Million Eggs</i>	<i>Million Eggs</i>	<i>Million Eggs</i>	<i>Million Eggs</i>	<i>Million Eggs</i>
Dec <sup>1</sup>	7,047	7,279	5,975	6,198	1,072	1,081
Jan	6,979	7,150	5,898	6,064	1,081	1,086
Feb	6,281		5,295		986	
Mar	7,052		5,943		1,109	
Apr	6,784		5,708		1,076	
May	6,941		5,824		1,117	
Jun	6,742		5,652		1,090	
Jul	6,903		5,797		1,106	
Aug	6,971		5,876		1,095	
Sep	6,860		5,797		1,063	
Oct	7,131		6,039		1,092	
Nov	7,016		5,967		1,049	
During Year	82,707	14,429	69,771	12,262	12,936	2,167

<sup>1</sup> December preceding year.

**Layers and Eggs: Layers on Hand and Eggs Produced by Type,  
and Forced Molt, United States, December-January 1998-00**

Item	Unit	1998	1999	1999 as % of 1998
Layers During Dec	1,000			
All Layers		321,782	328,824	102
Table Egg Type		263,524	270,367	103
Hatching Egg Type		58,258	58,457	100
Broiler-Type Hatching		55,593	55,722	100
Egg-Type Hatching		2,665	2,735	103
Eggs per 100 Layers During Dec	Number			
All Layers		2,190	2,214	101
Table Egg Type		2,267	2,292	101
Hatching Egg Type		1,840	1,849	100
Broiler-Type Hatching		1,813	1,825	101
Egg-Type Hatching		2,402	2,340	97
Eggs Produced During Dec	Million			
All Layers		7,047	7,279	103
Table Egg Type		5,975	6,198	104
Hatching Egg Type		1,072	1,081	101
Broiler-Type Hatching		1,008	1,017	101
Egg-Type Hatching		64	64	100
		1999	2000	2000 as % of 1999
Layers on Jan 1	1,000			
All Layers		322,137	328,307	102
Table Egg Type		263,300	269,919	103
Hatching Egg Type		58,837	58,388	99
Broiler-Type Hatching		56,134	55,658	99
Egg-Type Hatching		2,703	2,730	101
Eggs per 100 Layers on Jan 1	Number			
All Layers		70.3	71.0	101
Table Egg Type		72.9	73.5	101
Hatching Egg Type		58.7	59.7	102
Broiler-Type Hatching		57.8	58.9	102
Egg-Type Hatching		77.1	77.3	100
Forced Molt Layers on Jan 1	Percent			
Percent Being Molted		4.1	2.9	71
Percent with Molt Completed		22.5	22.9	102
Layers Sold for Slaughter During Dec	1,000	16,686	16,549	99
Layers Rendered, Died, Destroyed, Composted or Disappeared For Any Reason During Dec		3,301	3,981	121
Pullets Less Than 20 Weeks of Age, Jan 1	1,000	94,494	96,967	103
Pullets Added During Dec <sup>1</sup>	1,000	20,542	20,088	98

<sup>1</sup> Pullet chicks one day old added to pullet flocks.

**Layers and Eggs: Layers on Hand and Eggs Produced by Type,  
and Forced Molt, United States, January-February 1999-00**

Item	Unit	1999 <sup>1</sup>	2000	2000 as % of 1999
Layers During Jan	1,000			
All Layers		322,326	328,578	102
Table Egg Type		263,381	270,022	103
Hatching Egg Type		58,945	58,556	99
Broiler-Type Hatching		56,210	55,842	99
Egg-Type Hatching		2,735	2,714	99
Eggs per 100 Layers During Jan	Number			
All Layers		2,165	2,176	101
Table Egg Type		2,239	2,246	100
Hatching Egg Type		1,834	1,855	101
Broiler-Type Hatching		1,806	1,828	101
Egg-Type Hatching		2,413	2,395	99
Eggs Produced During Jan	Million			
All Layers		6,979	7,150	102
Table Egg Type		5,898	6,064	103
Hatching Egg Type		1,081	1,086	100
Broiler-Type Hatching		1,015	1,021	101
Egg-Type Hatching		66	65	98
Layers on Feb 1	1,000			
All Layers		322,382	328,804	102
Table Egg Type		263,360	270,097	103
Hatching Egg Type		59,022	58,707	99
Broiler-Type Hatching		56,266	56,013	100
Egg-Type Hatching		2,756	2,694	98
Eggs per 100 Layers on Feb 1	Number			
All Layers		69.1	69.0	100
Table Egg Type		71.3	71.0	100
Hatching Egg Type		59.3	59.6	101
Broiler-Type Hatching		58.4	58.8	101
Egg-Type Hatching		76.3	76.1	100
Forced Molt Layers, Feb 1	Percent			
Percent Being Molted		4.9	5.0	102
Percent with Molt Completed		22.1	21.1	95
Layers Sold for Slaughter During Jan	1,000	16,701	16,785	100
Layers Rendered, Died, Destroyed, Composted or Disappeared For Any Reason During Jan	1,000	3,657	4,154	114
Pullets Less Than 20 Weeks of Age, Feb 1	1,000	94,253	96,191	102
Pullets Added During Jan <sup>2</sup>	1,000	21,239	22,105	104

<sup>1</sup> Revised.

<sup>2</sup> Pullet chicks one day old added to pullet flocks.

**Layers and Eggs: Layers on Hand and Eggs Produced by Type,  
and Forced Molt, 30 Selected States, December-January 1998-00 <sup>1</sup>**

Item	Unit	1998	1999	1999 as % of 1998
Layers During Dec	1,000			
All Layers		304,037	309,223	102
Table Egg Type		250,178	255,198	102
Hatching Egg Type		53,859	54,025	100
Broiler-Type Hatching		51,304	51,402	100
Egg-Type Hatching		2,555	2,623	103
Eggs per 100 Layers During Dec	Number			
All Layers		2,188	2,215	101
Table Egg Type		2,262	2,290	101
Hatching Egg Type		1,844	1,864	101
Broiler-Type Hatching		1,815	1,838	101
Egg-Type Hatching		2,427	2,364	97
Eggs Produced During Dec	Million			
All Layers		6,651	6,850	103
Table Egg Type		5,658	5,843	103
Hatching Egg Type		993	1,007	101
Broiler-Type Hatching		931	945	102
Egg-Type Hatching		62	62	100
		1999	2000	2000 as % of 1999
Layers on Jan 1	1,000			
All Layers		304,278	308,729	101
Table Egg Type		249,844	254,748	102
Hatching Egg Type		54,434	53,981	99
Broiler-Type Hatching		51,852	51,358	99
Egg-Type Hatching		2,582	2,623	102
Eggs per 100 Layers on Jan 1	Number			
All Layers		70.3	71.0	101
Table Egg Type		72.8	73.4	101
Hatching Egg Type		58.7	59.7	102
Broiler-Type Hatching		57.8	58.8	102
Egg-Type Hatching		77.7	77.4	100
Forced Molt Layers on Jan 1	Percent			
Percent Being Molted		4.1	2.8	68
Percent with Molt Completed		22.3	23.2	104
Layers Sold for Slaughter During Dec	1,000	16,206	15,894	98
Layers Rendered, Died, Destroyed, Composted or Disappeared For Any Reason During Dec	1,000	3,177	3,752	118
Pullets Less Than 20 Weeks of Age, Jan 1	1,000	89,134	90,830	102
Pullets Added During Dec <sup>2</sup>	1,000	19,467	19,324	99

<sup>1</sup> The 30 States are listed in the table on page 8.

<sup>2</sup> Pullet chicks one day old added to pullet flocks.

**Layers and Eggs: Layers on Hand and Eggs Produced by Type, and Forced Molt, 30 Selected States, January-February, 1999-00 <sup>1</sup>**

Item	Unit	1999 <sup>2</sup>	2000	2000 as % of 1999
Layers During Jan	1,000			
All Layers		304,409	308,997	102
Table Egg Type		249,843	254,871	102
Hatching Egg Type		54,566	54,126	99
Broiler-Type Hatching		51,953	51,514	99
Egg-Type Hatching		2,613	2,612	100
Eggs per 100 Layers During Jan	1,000			
All Layers		2,165	2,174	100
Table Egg Type		2,237	2,242	100
Hatching Egg Type		1,834	1,853	101
Broiler-Type Hatching		1,805	1,825	101
Egg-Type Hatching		2,411	2,412	100
Eggs Produced During Jan	Million			
All Layers		6,590	6,718	102
Table Egg Type		5,589	5,715	102
Hatching Egg Type		1,001	1,003	100
Broiler-Type Hatching		938	940	100
Egg-Type Hatching		63	63	100
Layers on Feb 1	1,000			
All Layers		304,423	309,235	102
Table Egg Type		249,752	254,976	102
Hatching Egg Type		54,671	54,259	99
Broiler-Type Hatching		52,037	51,661	99
Egg-Type Hatching		2,634	2,598	99
Eggs per 100 Layers on Feb 1	Number			
All Layers		69.3	69.1	100
Table Egg Type		71.5	71.2	100
Hatching Egg Type		59.4	59.5	100
Broiler-Type Hatching		58.6	58.7	100
Egg-Type Hatching		76.3	76.0	100
Forced Molt Layers, Feb 1	Percent			
Percent Being Molted		4.8	5.0	104
Percent with Molt Completed		22.1	21.3	96
Layers Sold for Slaughter During Jan	1,000	15,575	15,886	102
Layers Rendered, Died, Destroyed, Composted or Disappeared For Any Reason During Jan	1,000	3,463	3,943	114
Pullets Less Than 20 Weeks of Age, Feb 1	1,000	88,765	90,187	102
Pullets Added During Jan <sup>3</sup>	1,000	20,449	21,168	104

<sup>1</sup> The 30 States are listed in the table on page 8.

<sup>2</sup> Revised.

<sup>3</sup> Pullet chicks one day old added to pullet flocks.

**Layers and Eggs: Layers on Hand and Eggs Produced by State  
and United States, During December 1998-99**

State	Table Egg Layers in Flocks 30,000 and Above		All Layers <sup>1</sup>		Eggs per 100 for All Layers <sup>1</sup>	
	1998	1999	1998	1999	1998	1999
	<i>1,000</i>	<i>1,000</i>	<i>1,000</i>	<i>1,000</i>	<i>Number</i>	<i>Number</i>
AL	3,793	3,462	10,576	10,443	1,957	1,982
AR	4,565	5,151	14,851	15,782	1,919	1,926
CA	25,657	24,282	26,357	24,931	2,261	2,250
CO	2,989	3,314	3,556	3,830	2,193	2,298
CT	2,933	2,954	3,114	3,088	2,312	2,429
FL	10,244	10,036	10,981	10,683	2,259	2,284
GA	11,892	11,800	21,417	21,002	2,134	2,181
HI	578	552	604	580	2,152	2,086
IL	2,713	3,121	2,959	3,432	2,140	2,331
IN	21,265	22,107	21,965	22,743	2,213	2,335
IA	24,261	26,399	25,177	27,242	2,157	2,247
ME	5,082	4,359	5,195	4,472	2,464	2,393
MD	3,137	3,036	3,599	3,493	2,334	2,405
MI	5,486	5,929	5,763	6,206	2,290	2,257
MN	11,403	12,138	12,119	12,831	2,178	2,198
MS	1,661	1,765	6,651	6,675	1,932	2,022
MO	5,179	4,724	6,641	6,182	2,259	2,232
NE	10,522	11,700	10,672	11,850	2,202	2,186
NY	3,322	3,657	3,577	3,851	2,432	2,337
NC	3,847	3,587	11,552	11,429	1,974	1,934
OH	29,639	30,778	30,344	31,454	2,304	2,283
OK	1,988	1,967	4,025	3,961	1,963	1,944
OR	2,874	2,737	3,031	2,916	2,270	2,366
PA	21,389	21,306	22,752	22,720	2,334	2,271
SC	3,660	3,846	4,667	4,764	1,971	2,204
SD	1,960	1,899	2,203	2,129	2,270	2,208
TX	13,719	13,830	17,608	17,899	2,175	2,252
VA	1,545	1,580	3,644	3,559	1,894	2,023
WA	4,893	4,616	5,013	4,736	2,322	2,310
WI	3,135	3,686	3,602	4,340	2,281	2,419
30 Sts	245,153	250,318	304,037	309,223	2,188	2,215
Oth Sts <sup>2</sup>	12,302	14,123	17,745	19,601	2,232	2,194
US	257,455	264,441	321,782	328,824	2,190	2,214

<sup>1</sup> Includes all layers and eggs produced in both table egg and hatching egg flocks regardless of size.

<sup>2</sup> Estimates for individual States are not available.



**Layers and Eggs: Layers on Hand and Eggs Produced by State  
and United States, During January 1999-00**

State	Table Egg Layers in Flocks 30,000 and Above		All Layers <sup>1</sup>		Eggs per 100 for All Layers <sup>1</sup>	
	1999	2000	1999	2000	1999	2000
	<i>1,000</i>	<i>1,000</i>	<i>1,000</i>	<i>1,000</i>	<i>Number</i>	<i>Number</i>
AL	3,616	3,344	10,561	10,483	1,932	1,927
AR	4,556	5,081	15,048	15,509	1,901	1,954
CA	25,834	23,816	26,606	24,517	2,180	2,219
CO	2,937	3,279	3,478	3,758	2,128	2,315
CT	2,943	2,980	3,126	3,114	2,303	2,344
FL	10,223	9,946	10,968	10,641	2,298	2,218
GA	12,028	11,809	21,540	20,975	2,080	2,122
HI	587	552	614	580	2,068	2,103
IL	2,644	3,261	2,891	3,511	2,179	2,193
IN	21,154	21,963	21,859	22,639	2,246	2,288
IA	24,183	26,585	25,104	27,407	2,175	2,255
ME	4,947	4,226	5,064	4,333	2,468	2,400
MD	3,160	3,051	3,611	3,484	2,354	2,382
MI	5,490	5,901	5,770	6,178	2,203	2,171
MN	11,448	12,038	12,168	12,738	2,153	2,143
MS	1,738	1,780	6,809	6,605	1,997	1,998
MO	5,152	4,599	6,576	6,001	2,205	2,183
NE	10,612	11,726	10,762	11,876	2,146	2,097
NY	3,370	3,713	3,616	3,899	2,406	2,360
NC	3,667	3,584	11,471	11,456	1,944	1,912
OH	29,700	31,421	30,410	32,120	2,243	2,235
OK	2,014	1,962	3,974	4,006	1,963	1,947
OR	2,883	2,795	3,039	2,974	2,264	2,354
PA	21,294	21,278	22,701	22,739	2,335	2,238
SC	3,739	3,680	4,773	4,606	1,948	2,084
SD	1,928	1,882	2,169	2,142	2,305	2,241
TX	13,601	13,727	17,587	17,853	2,098	2,151
VA	1,488	1,641	3,592	3,718	1,893	1,937
WA	4,820	4,625	4,940	4,745	2,356	2,306
WI	3,090	3,729	3,582	4,390	2,289	2,301
30 Sts	244,846	249,974	304,409	308,997	2,165	2,174
Oth Sts <sup>2</sup>	12,484	14,114	17,917	19,581	2,171	2,206
US	257,330	264,088	322,326	328,578	2,165	2,176

<sup>1</sup> Includes all layers and eggs produced in both table egg and hatching egg flocks regardless of size.

<sup>2</sup> Estimates for individual States are not available.

**Egg Production: By Type, State, and United States,  
December 1998-99**

State	Total Production		Table Eggs <sup>1</sup>		Hatching Eggs <sup>1</sup>	
	1998	1999	1998	1999	1998	1999
	<i>Million Eggs</i>	<i>Million Eggs</i>	<i>Million Eggs</i>	<i>Million Eggs</i>	<i>Million Eggs</i>	<i>Million Eggs</i>
AL	207	207	88	79	119	128
AR	285	304	103	116	182	188
CA	596	561				
CO	78	88				
CT	72	75				
FL	248	244	234	233	14	11
GA	457	458	274	276	183	182
HI	12.8	12.1	12.8	12.1	0	0
IL	63	80	59	75	4	5
IN	486	531	474	519	12	12
IA	543	612				
ME	128	107				
MD	84	84	76	76	8	8
MI	132	140				
MN	264	282	254	273	10	9
MS	129	135	38	43	91	92
MO	150	138				
NE	235	259	235	259	0	0
NY	87	90				
NC	228	221	94	90	134	131
OH	699	718				
OK	79	77	46	45	33	32
OR	69	69	68	67	1	2
PA	531	516	515	498	16	18
SC	92	105	76	88	16	17
SD	50	47	50	47	0	0
TX	383	403				
VA	69	72	33	37	36	35
WA	116	109				
WI	82	105				
30 Sts	6,651	6,850	5,658	5,843	993	1,007
Oth Sts <sup>2</sup>	396	430	317	355	79	74
US	7,047	7,279	5,975	6,198	1,072	1,081

<sup>1</sup> Data by type of flock not shown for some States to avoid disclosing individual operations.

<sup>2</sup> Estimates for individual States are not available.

**Egg Production: By Type, State, and United States,  
January 1999-00**

State	Total Production		Table Eggs <sup>1</sup>		Hatching Eggs <sup>1</sup>	
	1999	2000	1999	2000	1999	2000
	<i>Million Eggs</i>	<i>Million Eggs</i>	<i>Million Eggs</i>	<i>Million Eggs</i>	<i>Million Eggs</i>	<i>Million Eggs</i>
AL	204	202	82	73	122	129
AR	286	303	100	117	186	186
CA	580	544				
CO	74	87				
CT	72	73				
FL	252	236	238	224	14	12
GA	448	445	266	265	182	180
HI	12.7	12.2	12.7	12.2	0	0
IL	63	77	59	73	4	4
IN	491	518	479	506	12	12
IA	546	618				
ME	125	104				
MD	85	83	78	75	7	8
MI	130	134				
MN	262	273	252	264	10	9
MS	136	132	42	42	94	90
MO	145	131				
NE	231	249	231	249	0	0
NY	87	92				
NC	223	219	88	88	135	131
OH	682	718				
OK	78	78	46	46	32	32
OR	69	70	68	68	1	2
PA	530	509	513	491	17	18
SC	93	96	79	80	14	16
SD	50	48	50	48	0	0
TX	369	384				
VA	68	72	32	36	36	36
WA	116	109				
WI	82	101				
30 Sts	6,590	6,718	5,589	5,715	1,001	1,003
Oth Sts <sup>2</sup>	389	432	309	349	80	83
US	6,979	7,150	5,898	6,064	1,081	1,086

<sup>1</sup> Data by type of flock not shown for some States to avoid disclosing individual operations.

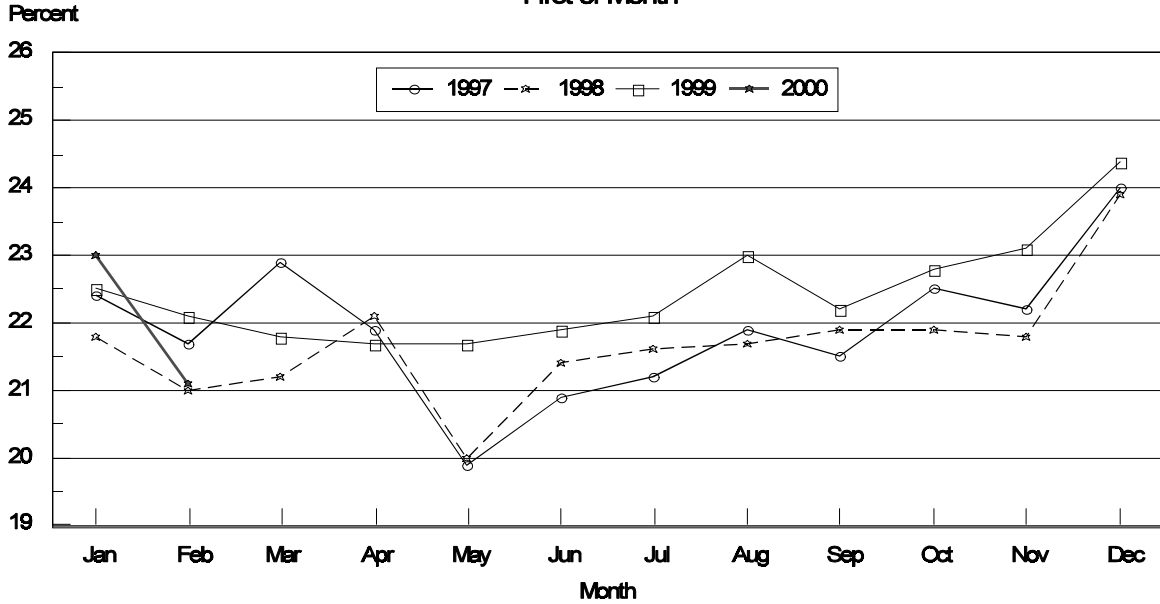
<sup>2</sup> Estimates for individual States are not available.

**Forced Molt: Percent of All Layers by Month,  
United States, 1999-00<sup>1</sup>**

Month	Percent Being Molted		Percent with Molt Completed	
	1999	2000	1999	2000
	<i>Percent</i>	<i>Percent</i>	<i>Percent</i>	<i>Percent</i>
Jan	4.1	2.9	22.5	22.9
Feb	4.9	5.0	22.1	21.1
Mar	3.3		21.8	
Apr	2.8		21.7	
May	5.6		21.7	
Jun	5.2		21.9	
Jul	5.5		22.1	
Aug	4.6		23.0	
Sep	4.3		22.2	
Oct	4.2		22.8	
Nov	3.6		23.1	
Dec	2.0		24.4	

<sup>1</sup> As of first of month.

**All Layers: United States  
Percent Molt Completed, 1997 - 2000  
First of Month**



**Forced Molt: Percent of All Layers by State  
and United States, February 1999-00 <sup>1</sup>**

State	Percent Being Molted		Percent with Molt Completed	
	1999 <i>Percent</i>	2000 <i>Percent</i>	1999 <i>Percent</i>	2000 <i>Percent</i>
AL	1.0	4.5	13.0	8.5
AR	3.0	3.0	7.5	8.5
CA	8.0	7.0	36.5	38.5
CO	6.5	1.5	34.0	23.5
CT	0.0	6.0	12.0	11.5
FL	6.5	8.0	35.0	38.0
GA	6.5	6.5	19.0	15.5
HI	6.5	5.5	38.0	45.0
IL	11.5	15.5	14.5	5.5
IN	3.5	4.0	31.0	29.0
IA	4.5	3.5	29.0	30.0
ME	0.0	0.0	1.5	0.0
MD	4.5	0.0	37.0	40.0
MI	6.0	6.0	24.5	22.5
MN	2.5	2.5	34.5	31.0
MS	12.0	4.0	9.0	14.5
MO	7.0	3.0	11.5	22.5
NE	4.5	9.0	15.0	25.0
NY	0.0	1.5	5.5	5.0
NC	1.5	3.0	7.0	8.5
OH	5.0	4.5	14.5	12.0
OK	1.5	1.0	7.5	9.5
OR	3.0	0.0	43.5	37.5
PA	5.5	5.5	19.0	20.0
SC	3.0	11.5	23.0	26.0
SD	2.5	4.0	27.0	28.0
TX	6.0	4.5	24.5	15.5
VA	0.5	8.5	5.5	8.5
WA	5.0	5.0	47.5	38.5
WI	4.5	13.0	26.5	16.5
30 Sts	4.8	5.0	22.1	21.3
Oth Sts <sup>2</sup>	6.2	5.3	22.0	18.6
US	4.9	5.0	22.1	21.1

<sup>1</sup> As of first of month.

<sup>2</sup> Estimates for individual States are not available.

**Hatchery Production: Eggs in Incubators, Chicks Hatched,  
and Placements by Type, United States, January-February 1999-00**

Item	1999	2000	2000 as % of 1999
	<i>1,000</i>	<i>1,000</i>	<i>Percent</i>
Egg-Type			
Eggs in Incubators on Feb 1	33,876	32,847	97
Chicks Hatched During Jan	35,653	34,125	96
Pullets Hatched During Jan for Intended Placements in Hatchery Supply Flocks 7-18 Month Earlier <sup>1</sup>	166 3,029	212 3,012	128 99
Broiler-Type			
Eggs in Incubators on Feb 1	607,412	620,179	102
Chicks Hatched During Jan	735,348	749,375	102
Pullets Hatched During Jan for Intended Placements in Hatchery Supply Flocks 7-15 Months Earlier <sup>2</sup>	7,059 59,403	6,861 64,050	97 108

<sup>1</sup> 2000 includes pullet chicks hatched Jul 1998 through Jun 1999.

<sup>2</sup> 2000 includes pullet chicks hatched Oct 1998 through Jun 1999.

**Egg-Type Eggs in Incubators: By Region and United States,  
February 1, 1999-00**

Geographic Division	1999	2000	2000 as % of 1999
	<i>1,000</i>	<i>1,000</i>	<i>Percent</i>
North Atlantic	6,904	5,724	83
E North Central	7,473	8,427	113
W North Central	7,208	6,516	90
South Atlantic	4,515	4,122	91
South Central	3,985	3,146	79
West	3,791	4,912	130
US	33,876	32,847	97

Regional Listing:

North Atlantic = CT, ME, MA, NH, NJ, NY, PA, RI, VT.

E North Central = IL, IN, MI, OH, WI.

W North Central = IA, KS, MN, MO, NE, ND, SD.

South Atlantic = DE, FL, GA, MD, NC, SC, VA, WV.

South Central = AL, AR, KY, LA, MS, OK, TN, TX.

West = AK, AZ, CA, CO, HI, ID, MT, NM, NV, OR, UT, WA, WY.

**Egg-Type Chicks Hatched: By State and United States,  
January 1999-00**

State	January			Jan-Jan		
	1999	2000	2000 as % of 1999	1999	2000	2000 as % of 1999
	<i>1,000</i>	<i>1,000</i>	<i>Percent</i>	<i>1,000</i>	<i>1,000</i>	<i>Percent</i>
AR	607	496	82	607	496	82
FL	1,291	1,074	83	1,291	1,074	83
GA	2,194	2,164	99	2,194	2,164	99
IN	7,059	7,040	100	7,059	7,040	100
IA	3,974	4,468	112	3,974	4,468	112
KS	295	244	83	295	244	83
MN	1,776	1,769	100	1,776	1,769	100
MO	310	310	100	310	310	100
PA	5,002	4,943	99	5,002	4,943	99
Oth Sts <sup>1</sup>	13,145	11,617	88	13,145	11,617	88
US	35,653	34,125	96	35,653	34,125	96

<sup>1</sup> Not published separately to avoid disclosing data for individual operations.

**Egg-Type Chicks Hatched: By Month, United States, 1998-00**

Month	By Months				Cumulative			
	1998	1999	2000	2000 as % of 1999	1998	1999	2000	2000 as % of 1999
	<i>1,000</i>	<i>1,000</i>	<i>1,000</i>	<i>Percent</i>	<i>1,000</i>	<i>1,000</i>	<i>1,000</i>	<i>Percent</i>
Jan	37,159	35,653	34,125	96	37,159	35,653	34,125	96
Feb	34,593	35,648			71,752	71,301		
Mar	40,590	41,325			112,342	112,626		
Apr	39,043	42,043			151,385	154,669		
May	39,192	40,590			190,577	195,259		
Jun	39,302	40,569			229,879	235,828		
Jul	35,558	34,269			265,437	270,097		
Aug	33,380	35,453			298,817	305,550		
Sep	37,943	38,841			336,760	344,391		
Oct	34,649	38,559			371,409	382,950		
Nov	31,251	33,078			402,660	416,028		
Dec	35,733	32,730			438,393	448,758		

**Intended Placements: Egg-Type Pullet Chicks for Hatchery Supply  
Flocks by Month and Total, United States, 1998-00<sup>1</sup>**

Month	Pullet Chicks Hatched			2000 as % of 1999	Cumulative Potential Placements Relative to Current Supply Flocks 7-18 Months Earlier <sup>2</sup>		
	1998	1999	2000		1998	1999	2000
	<i>1,000</i>	<i>1,000</i>	<i>1,000</i>	<i>Percent</i>	<i>1,000</i>	<i>1,000</i>	<i>1,000</i>
Jan	189	166	212	128	2,823	3,029	3,012
Feb	250	267			2,764	3,120	2,945
Mar	225	257			2,863	3,020	3,078
Apr	333	287			3,034	2,942	2,981
May	192	283			3,057	3,044	2,877
Jun	354	187			2,976	3,132	2,942
Jul	298	231			2,968	3,108	2,934
Aug	185	318			2,949	3,085	2,980
Sep	324	227			2,977	3,102	
Oct	358	254			2,993	3,134	
Nov	217	282			3,010	3,088	
Dec	183	175			2,929	3,179	
Total	3,108	2,934					

<sup>1</sup> Reported by leading breeders. Coverage may not be 100 percent. Includes expected pullet chicks from eggs sold during the preceding month at the rate of 125 pullet chicks per 30 dozen case of eggs.

<sup>2</sup> For January 2000, includes breeder pullet chicks hatched Jul 1998 through Jun 1999. The 7-18 months represent the first laying cycle. Molting and additional laying cycles will increase the cumulative potential placements.

**Broiler-Type Eggs in Incubators: By Region  
and United States, February 1, 1999-00**

Geographic Division	1999	2000	2000 as % of 1999
	<i>1,000</i>	<i>1,000</i>	<i>Percent</i>
North Atlantic	11,800	12,098	103
E North Central	7,166	8,072	113
W North Central	22,381	20,681	92
South Atlantic	231,526	231,526	100
South Central	311,647	323,788	104
West	22,892	24,014	105
US	607,412	620,179	102



**Broiler-Type Chicks Hatched: By State  
and United States, January 1999-00**

State	January			Jan-Jan		
	1999	2000	2000 as % of 1999	1999	2000	2000 as % of 1999
	<i>1,000</i>	<i>1,000</i>	<i>Percent</i>	<i>1,000</i>	<i>1,000</i>	<i>Percent</i>
AL	97,270	102,750	106	97,270	102,750	106
AR	108,197	111,504	103	108,197	111,504	103
DE	15,575	15,401	99	15,575	15,401	99
FL	9,896	9,531	96	9,896	9,531	96
GA	112,588	112,789	100	112,588	112,789	100
MD	31,056	31,076	100	31,056	31,076	100
MS	65,663	65,079	99	65,663	65,079	99
NC	62,462	63,570	102	62,462	63,570	102
PA	13,125	13,307	101	13,125	13,307	101
SC	16,423	17,266	105	16,423	17,266	105
TX	48,386	51,454	106	48,386	51,454	106
VA	23,788	23,637	99	23,788	23,637	99
CA TN & WV	39,365	39,893	101	39,365	39,893	101
15 Sts <sup>1</sup>	643,794	657,257	102	643,794	657,257	102
Oth Sts <sup>2</sup>	91,554	92,118	101	91,554	92,118	101
US	735,348	749,375	102	735,348	749,375	102

<sup>1</sup> States in the weekly hatchery production estimating program.

<sup>2</sup> Not published separately to avoid disclosing data for individual operations.

**Broiler Chicks Hatched: By Month, United States, 1998-00**

Month	By Months				Cumulative			
	1998	1999	2000	2000 as % of 1999	1998	1999	2000	2000 as % of 1999
	<i>1,000</i>	<i>1,000</i>	<i>1,000</i>	<i>Percent</i>	<i>1,000</i>	<i>1,000</i>	<i>1,000</i>	<i>Percent</i>
Jan	711,373	735,348	749,375	102	711,373	735,348	749,375	102
Feb	645,180	661,739			1,356,553	1,397,087		
Mar	730,316	755,179			2,086,869	2,152,266		
Apr	708,260	734,340			2,795,129	2,886,606		
May	739,319	766,161			3,534,448	3,652,767		
Jun	717,967	744,447			4,252,415	4,397,214		
Jul	722,715	750,547			4,975,130	5,147,761		
Aug	715,650	741,253			5,690,780	5,889,014		
Sep	695,281	699,664			6,386,061	6,588,678		
Oct	693,189	697,787			7,079,250	7,286,465		
Nov	678,003	673,736			7,757,253	7,960,201		
Dec	737,840	747,905			8,495,093	8,708,106		

**Intended Placements: Broiler-Type Pullet Chicks for Hatchery  
Supply Flocks by Month and Total, 1998-00 <sup>1</sup>**

Month	Pullet Chicks Hatched			2000 as % of 1999	Cumulative Potential Placements Relative to Current Supply Flocks 7-15 Months Earlier <sup>2</sup>		
	1998	1999	2000		1998	1999	2000
	<i>1,000</i>	<i>1,000</i>	<i>1,000</i>	<i>Percent</i>	<i>1,000</i>	<i>1,000</i>	<i>1,000</i>
US Place- ments							
Jan	6,765	7,059	6,861	97	56,552	59,403	64,050
Feb	6,328	6,882			57,494	59,937	64,255
Mar	6,776	7,195			57,677	60,699	64,608
Apr	6,687	7,038			58,228	61,775	64,574
May	7,062	7,736			58,085	61,893	64,636
Jun	6,932	7,041			58,516	62,877	64,738
Jul	6,788	7,088			58,325	63,005	64,542
Aug	7,109	7,665			59,054	63,377	64,365
Sep	7,328	6,870			58,320	63,197	
Oct	6,883	7,121			59,088	63,460	
Nov	7,312	6,984			58,608	63,710	
Dec	6,904	6,999			58,973	64,337	
Annual Total	82,874	85,678					
Total Place- ments <sup>3</sup>							
Jan	8,613	8,679	8,069	93			
Feb	8,273	8,473					
Mar	8,760	8,863					
Apr	8,300	8,572					
May	8,957	9,463					
Jun	8,757	8,333					
Jul	8,423	8,342					
Aug	8,686	8,983					
Sep	8,985	8,044					
Oct	8,756	8,223					
Nov	9,412	8,228					
Dec	8,830	8,299					
Annual Total	104,752	102,502					

<sup>1</sup> Reported by leading breeders. Coverage may not be 100 percent. Includes expected pullet chicks from eggs sold during the preceding month at the rate of 125 pullet chicks per 30 dozen case of eggs.

<sup>2</sup> For Jan 2000, includes breeder pullet chicks hatched Oct 1998 through Jun 1999.

<sup>3</sup> U.S. production of intended placements worldwide.

## Procedures and Reliability

**Data Sources:** Primary data for the "**Chickens and Eggs**" report are from weekly and/or monthly questionnaires sent to producers. An attempt is made to collect information for layer and egg estimates from each known contractor and independent producer who has over 30,000 table egg layers. Coverage for operations with less than 30,000 table egg layers are estimated each month based on data reported in December. Approximately 900 contractors, independent egg producers, and started pullet operations are contacted each month. All known hatcheries, approximately 360, are contacted for information on a weekly and/or monthly basis.

**Revisions:** The previous month's estimates are subject to revision if late reports or corrected data indicates a different level. Additionally, revisions needed after the monthly report will be made at the end of the marketing year and published in the annual summaries of "**Chickens and Eggs Summary**" and "**Hatchery Production**".

**Procedures and Reliability:** Operations are mailed a questionnaire and given adequate time to respond by mail. Those that do not respond are phoned. Great care is exercised to ensure that all operations are accounted for during each survey period. However, there are usually missing reports that must be accounted for in the estimates.

Sound statistical methodology is employed to derive estimates from the reported data. All data are checked for unusual values. All operations' data are compared to their own past operating profiles and also to trends from other operations. Data for missing operations are estimated based on similar operations or historical data. Survey data are subject to non-sampling errors such as omissions and mistakes in reporting and in processing. While these errors cannot be measured directly, they are minimized by reviewing all data for consistency and reasonableness.

Egg-type chicks hatched are comprised of all chicks of egg-type domesticated breeds including males and chicks destined for hatchery supply flocks and research purposes. The relationship of chicks hatched to chicken inventory and poultry marketings is carefully monitored. The disposition of egg-type chicks hatched prior to placement into the laying flock can vary significantly, which can make comparisons to changes in layer inventory inconsistent over time.

Intended placement data reported by leading breeders include pullet chicks expected from eggs sold the preceding month. The breeders in this report account for a large percentage of replacement pullets for hatchery supply flocks. Production of replacement pullets by these breeders indicates the number of pullets available to hatchery egg supply flocks several months before the pullets will actually move into the flocks. Beginning with the January 1996 publication the broiler-type cumulative potential placements went from 7-14 months earlier to 7-15 months earlier. The egg-type cumulative potential placements of 7-18 months represent the first laying cycle. Molting and additional laying cycles will increase the cumulative potential placements of egg-type hatching flocks.

The next "Chickens and Eggs" report will be released at 3 p.m. ET on March 21, 2000.

The United States Department of Agriculture (USDA) prohibits discrimination in all its programs on the basis of race, color, national origin, gender, religion, age, disability, political beliefs, sexual orientation, and marital or family status. (Not all prohibited bases apply to all programs.) Persons with disabilities who require alternative means for communication of program information (braille, large print, audiotape, etc.) should contact the USDA's TARGET Center at 202-720-2600 (voice and TDD).

To file a complaint of discrimination, write USDA, Director, Office of Civil Rights, Room 326-W, Whitten Building, 14th and Independence Avenue, SW, Washington, D.C., 20250-9410, or call 202-720-5964 (voice or TDD). USDA is an equal opportunity provider and employer.

## ACCESS TO REPORTS!!

---

For your convenience, there are several ways to obtain NASS reports, data products, and services:

### INTERNET ACCESS

All NASS reports are available free of charge on the worldwide Internet. For access, connect to the Internet and go to the NASS Home Page at: <http://www.usda.gov/nass/>. Select "Today's Reports" or Publications and then Reports by Calendar or Publications and then Search, by Title or Subject.

### E-MAIL SUBSCRIPTION

There are two options for subscribing via e-mail. All NASS reports are available by subscription free of charge direct to your e-mail address. 1) Starting with the NASS Home Page at <http://www.usda.gov/nass/>, click on **Publications**, then click on the **Subscribe by E-mail** button which takes you to the page describing e-mail delivery of reports. Finally, click on **Go to the Subscription Page** and follow the instructions. 2) If you do NOT have Internet access, send an e-mail message to: [usda-reports@usda.mannlib.cornell.edu](mailto:usda-reports@usda.mannlib.cornell.edu). In the body of the message type the word: **list**.

### AUTOFAX ACCESS

NASSFax service is available for some reports from your fax machine. Please call 202-720-2000, using the handset attached to your fax. Respond to the voice prompts. Document 0411 is a list of available reports.

-----

### PRINTED REPORTS OR DATA PRODUCTS

CALL OUR TOLL-FREE ORDER DESK: 800-999-6779 (U.S. and Canada)  
Other areas, please call 703-834-0125      FAX: 703-834-0110  
(Visa, MasterCard, check, or money order acceptable for payment.)

-----

### ASSISTANCE

For **assistance** with general agricultural statistics or further information about NASS or its products or services, contact the **Agricultural Statistics Hotline** at **800-727-9540**, 7:30 a.m. to 4:00 p.m. ET, or e-mail: [nass@nass.usda.gov](mailto:nass@nass.usda.gov).